
Assessor's Office

2016 Budget Overview

Finance & Personnel Committee

October 8, 2015

Community Goals & Department Objectives

1. Increase investment & economic vitality throughout the city

- ❑ Generate accurate, consistent & fair assessments of the city's taxable property base
- ❑ Provide an open, transparent, and responsive assessment process

Goals & Objectives

Measure (Budget Year)	2014 Actual	2015 Projected	2016 Planned
Objections to assessments as a percentage of taxable parcels.	1.21%	1.50%	1.50%
Appeals to the Board of Review as a percentage of taxable parcels.	0.69%	0.35%	0.35%
Assessment ratio (assessed value : sale price) for properties sold during the year.	97.3%	98%	98%

2016 Proposed Budget

	2015 ADOPTED BUDGET	2016 PROPOSED BUDGET	DIFFERENCE (amount, %)
FTEs – O&M	45.39	47.8	2.41 (5.31%)
FTEs - Other	0.61	1.2	0.59 (96.72%)
Salaries & Wages	2,677,980	2,940,188	\$262,208 (9.79%)
Fringe Benefits	1,205,091	1,411,290	206,199 (17.11%)
Operating Expenditures	393,500	383,000	-10,500 (-2.67%)
Equipment	15,100	0	-15,100 (-100%)
Special Funds	126,000	106,000	-20,000 (-15.87%)
TOTAL	\$4,417,671	\$4,840,478	\$422,807 (9.57%)

2016 Proposed Budget

- Salary Increases & Adjustments – (+\$262,208)
 - 63% of staff eligible for pension offset
 - Career Ladders & Promotions
 - Addition of one new College Intern position
- Operating – (-\$10,500)
 - IT Services moved to DOA - ITMD
- Equipment – (-\$15,100)
 - Computer workstation purchased by ITMD
- Special funds decrease (-\$20,000)
 - Portion of IT maintenance costs absorbed in project

Special Purpose Accounts

	2015 ADOPTED BUDGET	2016 PROPOSED BUDGET	DIFFERENCE (amount, %)
Remission of Taxes Fund	\$1,600,000	\$750,000	-\$850,000 (-53.13%)
Total SPAs	\$1,600,000	\$750,000	-\$850,000 (-53.13%)

■ Remission of Taxes factors

- Settlement of major claims were anticipated in 2015
- Department staff continue to analyze appraisal process to comply with changing rules and laws
- The number of objections is expected to decrease

Revenues

	2015 ADOPTED BUDGET	2015 PROPOSED BUDGET	DIFFERENCE (amount, %)
Charges for Service	\$700,500	\$875,200	+\$174,700 (+24.94%)
TOTAL	\$700,500	\$875,200	+\$ 174,700 (+24.94%)

- Revenue increases for 2016
 - Increase in estimated appraisal fees due to increased volume and increases in construction and sales activity

2016 Capital Improvement Project

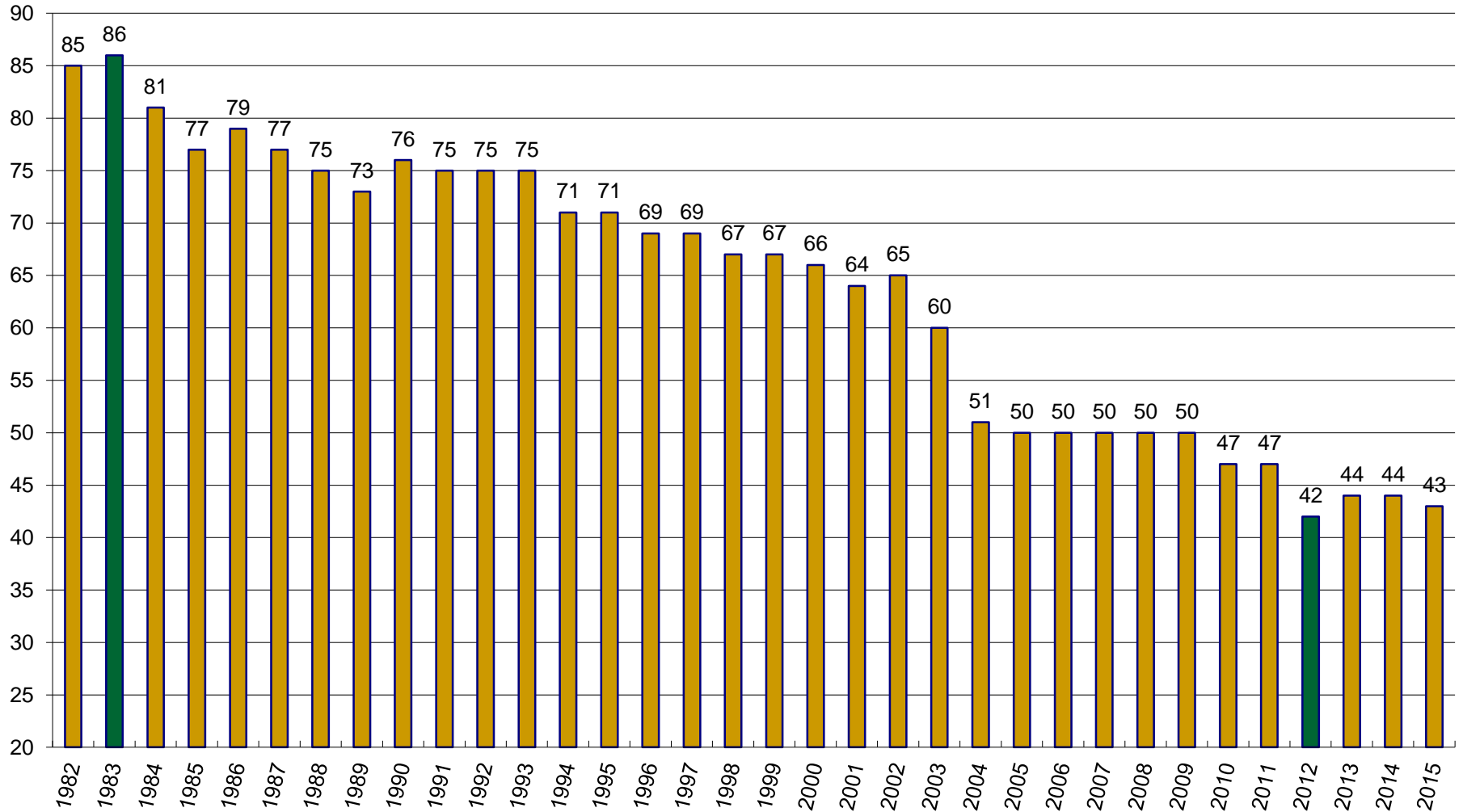
■ Software Upgrade:

- Second year of a three-year plan
 - 2016 proposed budget allocates \$556,000
 - RFP process is underway
 - Vendor to be identified December 2015/January 2016
- New software will increase efficiencies
 - Use of tablets or other mobile devices in the field
 - Capabilities for data sharing with other departments
 - Potential future revenue source

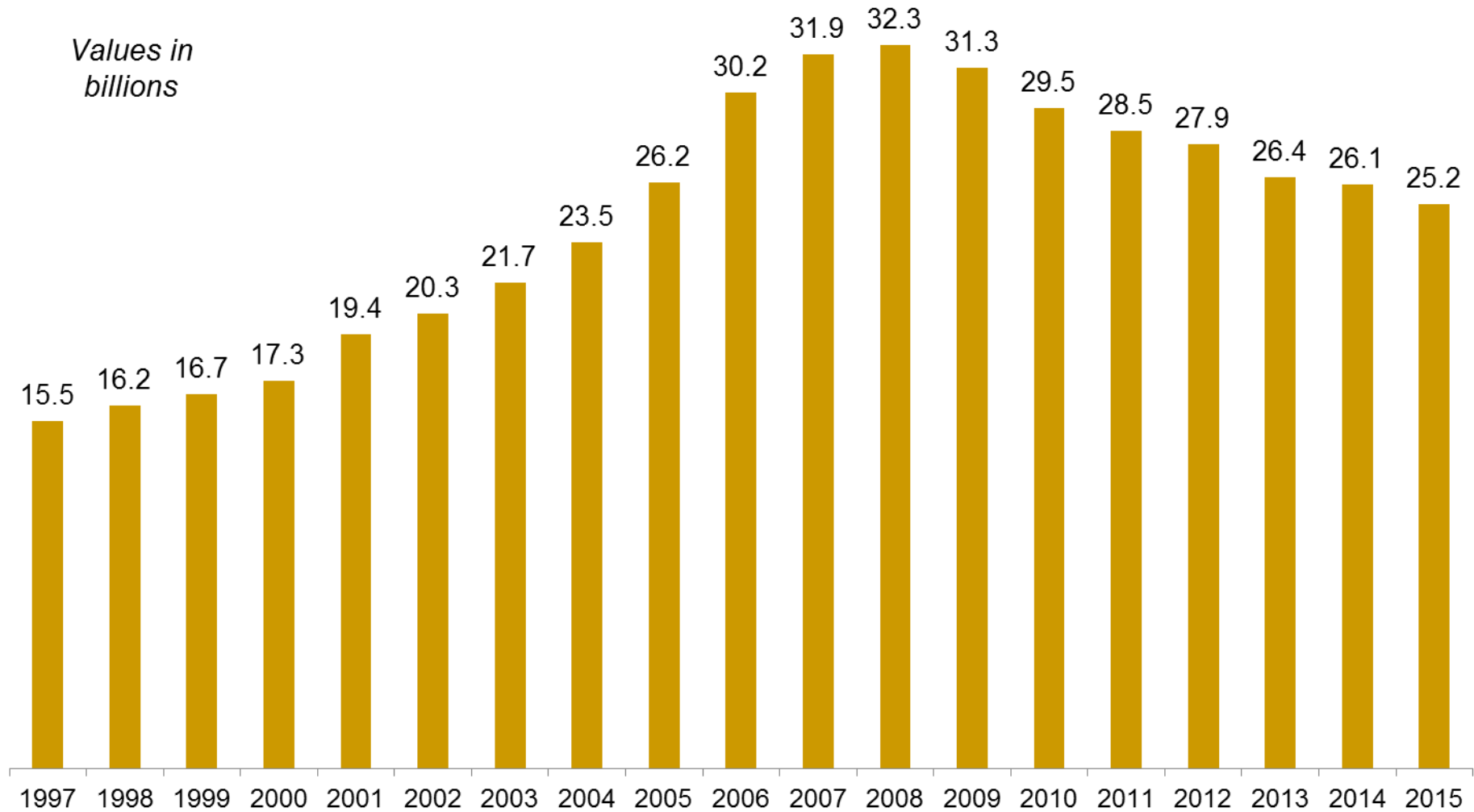
2016 Budget Hearing

Assessor's Office Department Comments

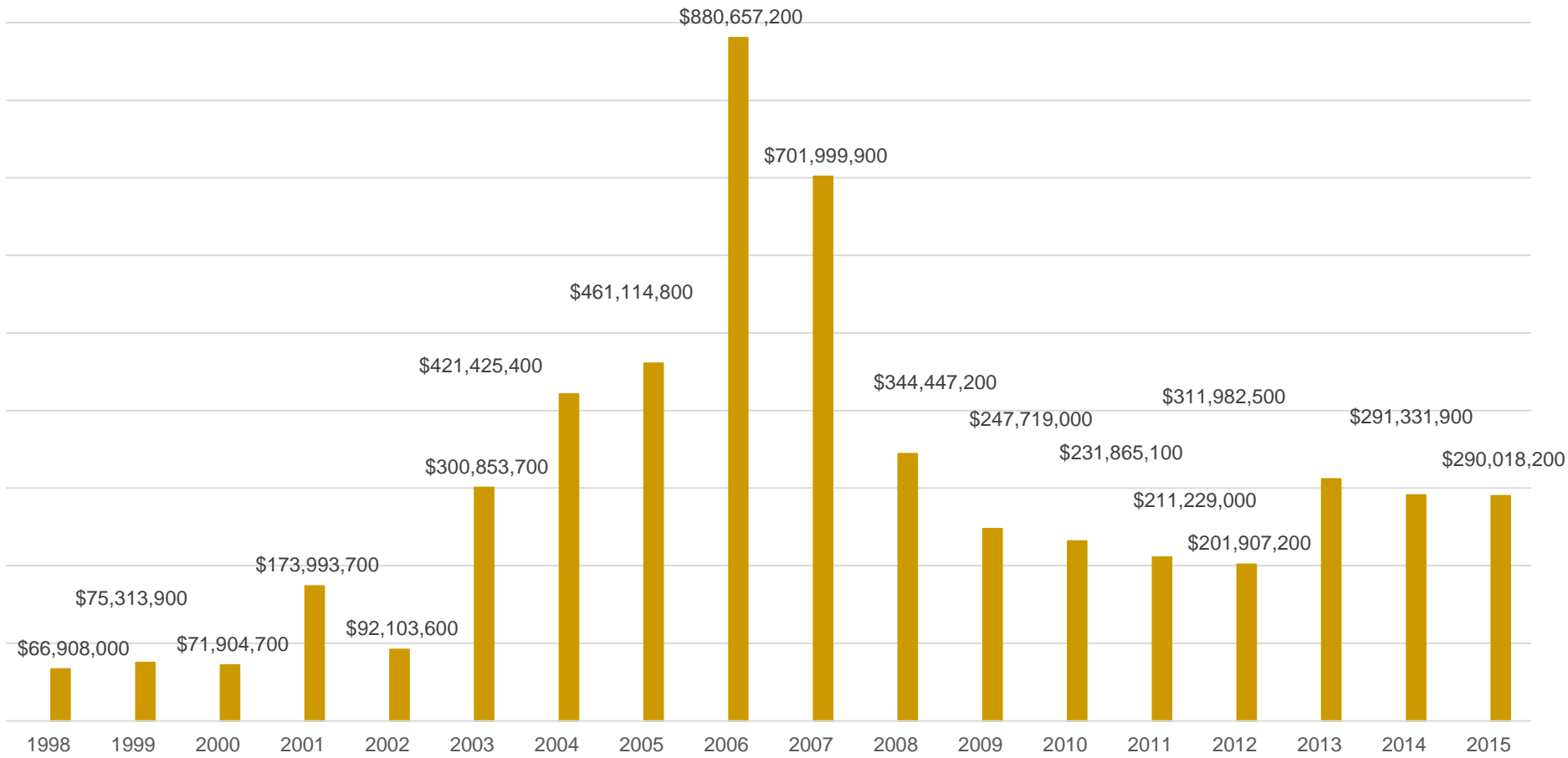
Assessor's Office Staffing Levels



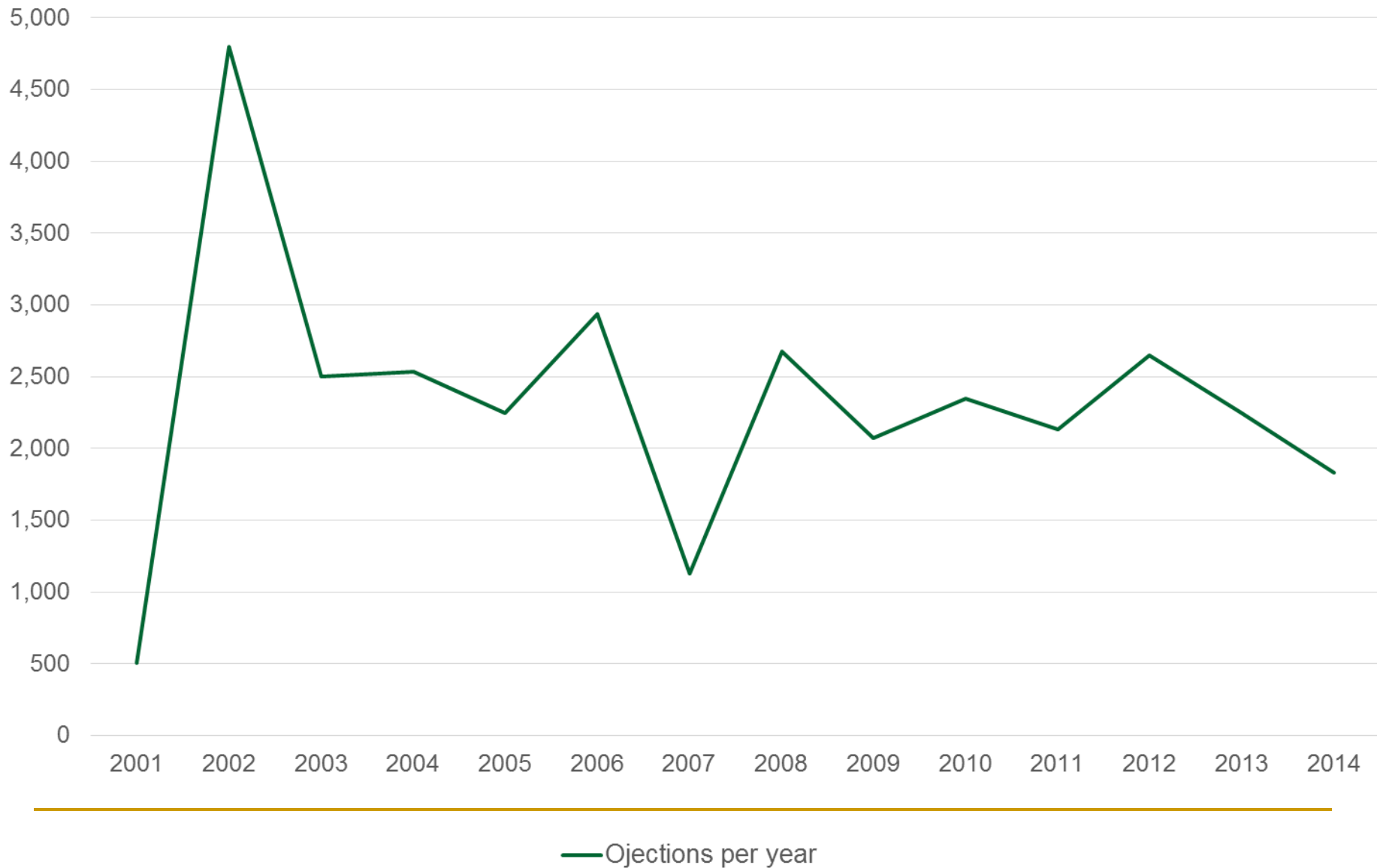
Equalized Value – 1997 thru 2015



Net New Construction



Number of Objections



Board of Review Cases

