

MILWAUKEE PUBLIC SCHOOLS - WASHINGTON HIGH SCHOOL

DOOR REPLACEMENT

2525 SHERMAN BOULEVARD
MILWAUKEE, WISCONSIN 53210
ZS LLC PROJECT NO.: 7378

OWNER:

MILWAUKEE PUBLIC SCHOOLS
1124 NORTH 11th STREET
MILWAUKEE, WI 53233

ARCHITECT/ENGINEER:

ZS LLC
10501 WEST RESEARCH DRIVE, SUITE 207
MILWAUKEE, WI 53226





10501 West Research Drive, Suite 207
Milwaukee, Wisconsin 53226
Phone: (414) 727-5000
Fax: (414) 727-6666
www.zsllc-us.com

Milwaukee Public Schools
Washington High School
2525 North Sherman Blvd.
Milwaukee, WI 53210

MILWAUKEE HPC
SUBMISSION

No.	Description	Date

Owner:
MILWAUKEE PUBLIC SCHOOLS
1124 NORTH 11th STREET
MILWAUKEE, WI 53233

GENERAL
PROJECT
INFORMATION

Project number	7378
Date	4/13/2015

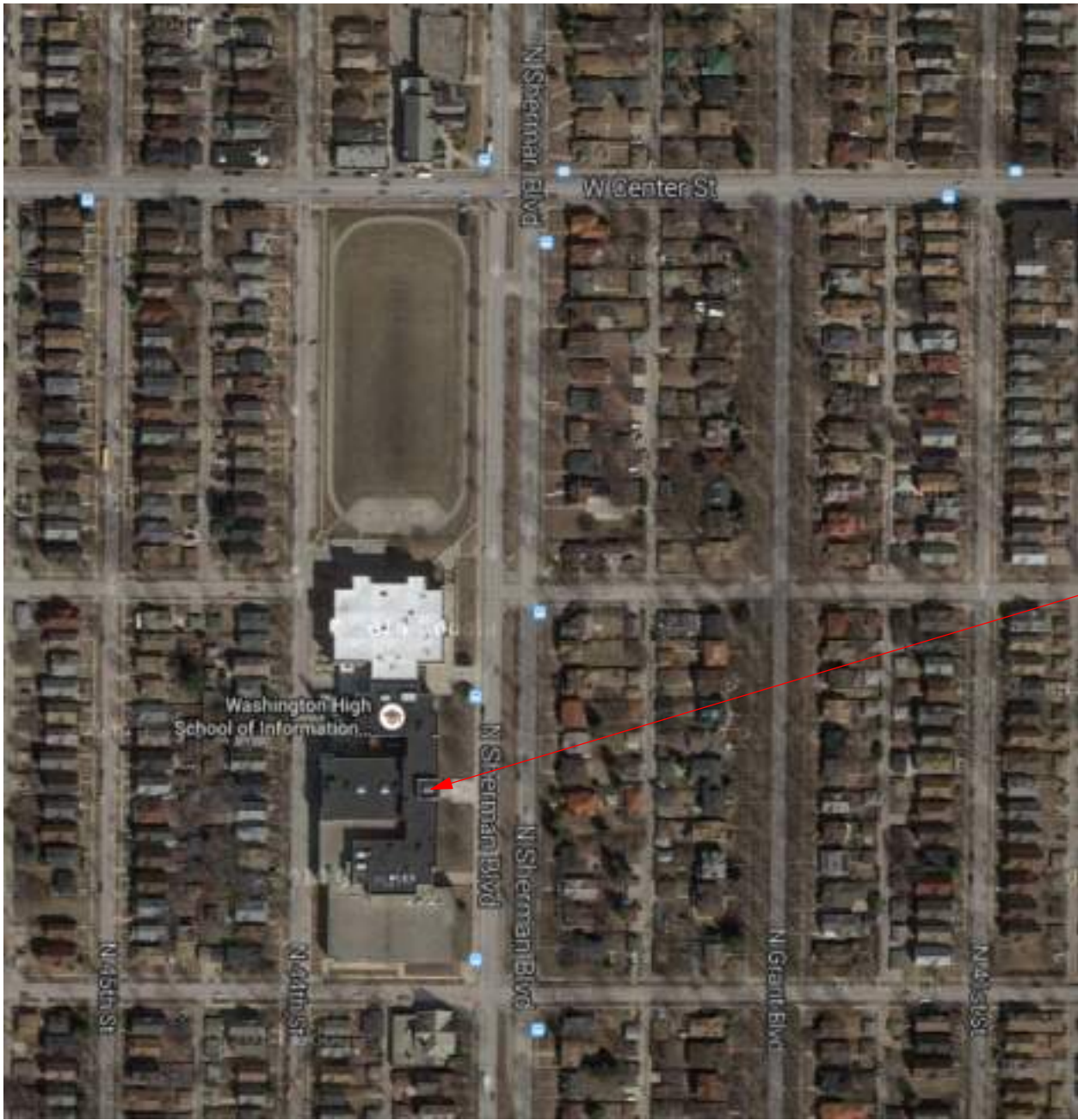


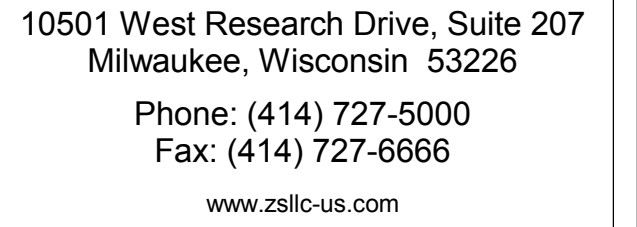
WASHINGTON HIGH SCHOOL - HISTORICAL PHOTOGRAPH

INDEX DRAWINGS:

Sheet List	
Sheet Number	Sheet Name
1	GENERAL PROJECT INFORMATION
2	WHS AERIAL VIEWS
3	WHS OVERALL ELEVATION PHOTOS
4	EXTERIOR ELEVATIONS
5	COURTYARD AND MISCELLANEOUS ELEVATIONS
6	ORIGINAL MAIN ENTRANCE
7	ORIGINAL MAIN ENTRANCE DETAILS
8	EXISTING DOOR SCHEDULE PHOTOS
9	EXISTING DOOR SCHEDULE PHOTOS
10	DOOR SCHEDULE
11	DOOR SCHEDULE
12	TYPICAL ENTRANCE DETAILS

LOCATION MAP:





Milwaukee Public Schools
Washington High School
2525 North Sherman Blvd.
Milwaukee, WI 53210

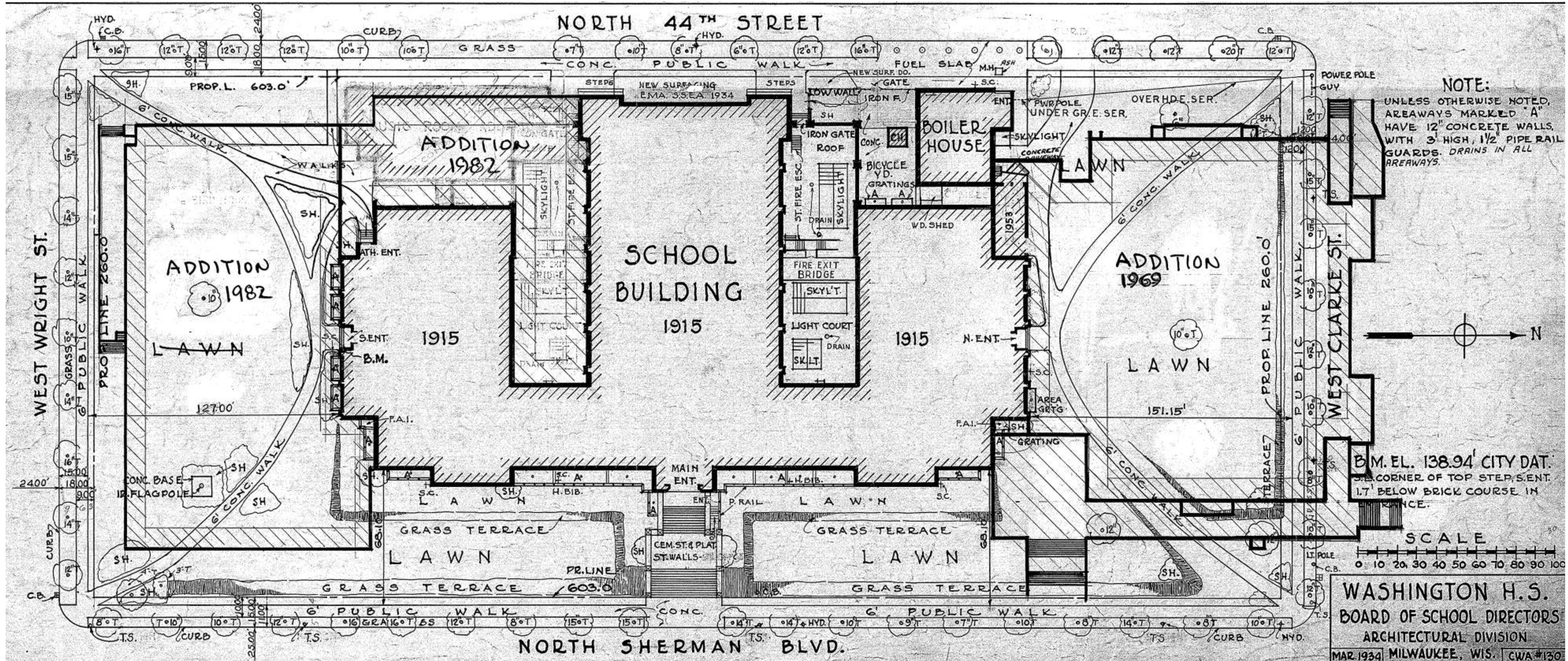
MILWAUKEE HPC
SUBMISSION[illegible]

Owner:

MILWAUKEE PUBLIC SCHOOLS
1124 NORTH 11th STREET
MILWAUKEE, WI 53233

WHS AERIAL VIEWS

Project number	7378
Date	4/13/2015



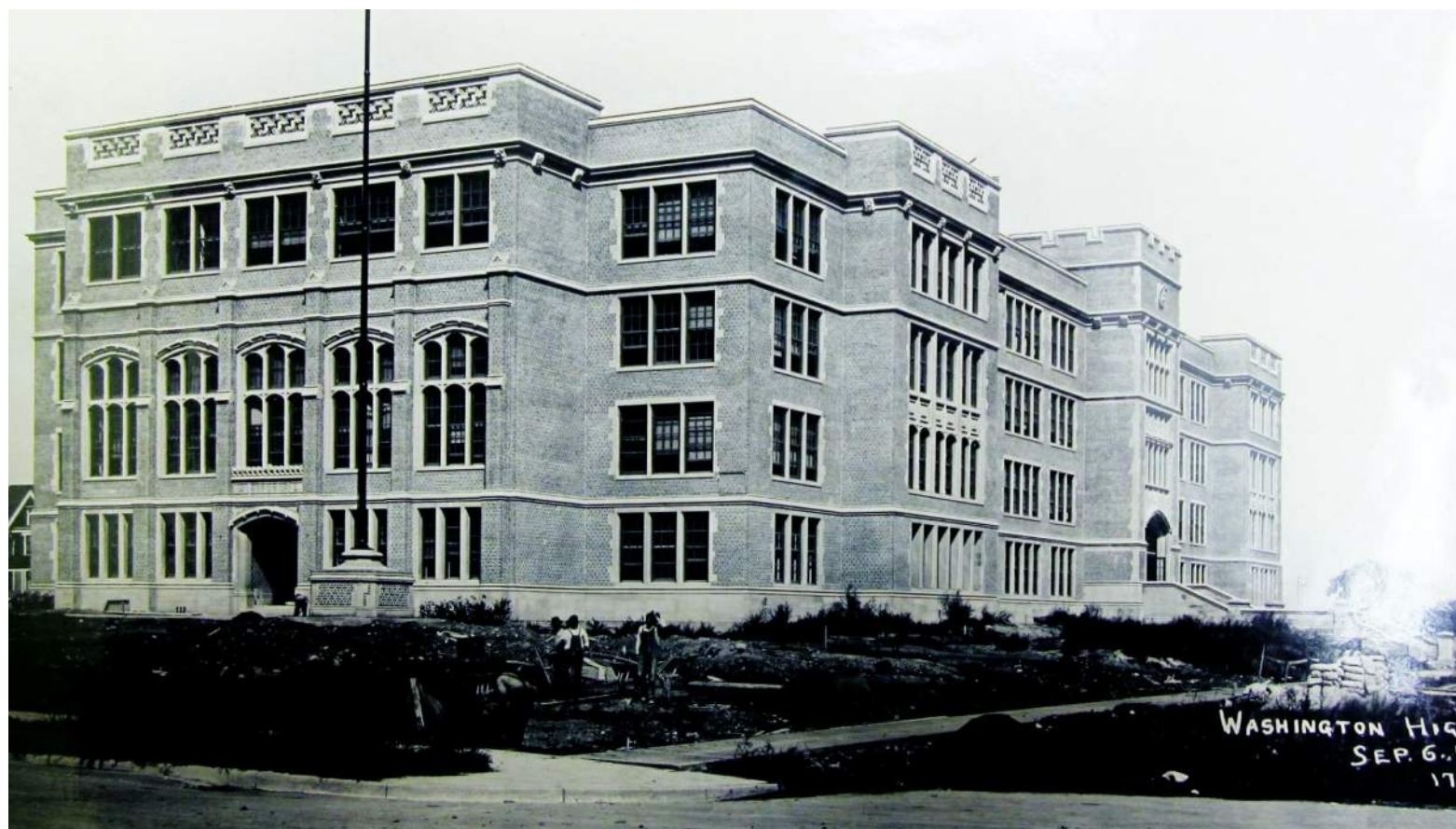
WASHINGTON HIGH SCHOOL SITE PLAN



WASHINGTON HIGH SCHOOL HISTORICAL AERIAL VIEW



WASHINGTON HIGH SCHOOL AERIAL VIEW, 2015



0501 West Research Drive, Suite 207
Milwaukee, Wisconsin 53226
Phone: (414) 727-5000
Fax: (414) 727-6666
www.zsllc-us.com

Milwaukee Public Schools
Washington High School
2525 North Sherman Blvd.
Milwaukee, WI 53210

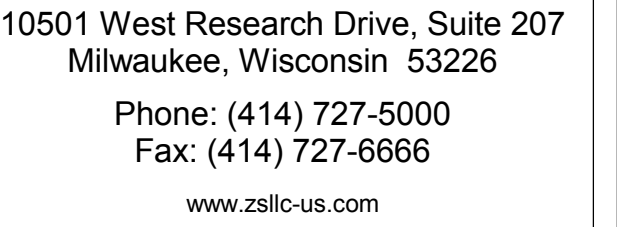
MILWAUKEE HPC
SUBMISSION[illegible]

Owner:

MILWAUKEE PUBLIC SCHOOLS
1124 NORTH 11th STREET
MILWAUKEE, WI 53233

WHS OVERALL
ELEVATION
PHOTOS

Project number	7378
Date	4/13/2015

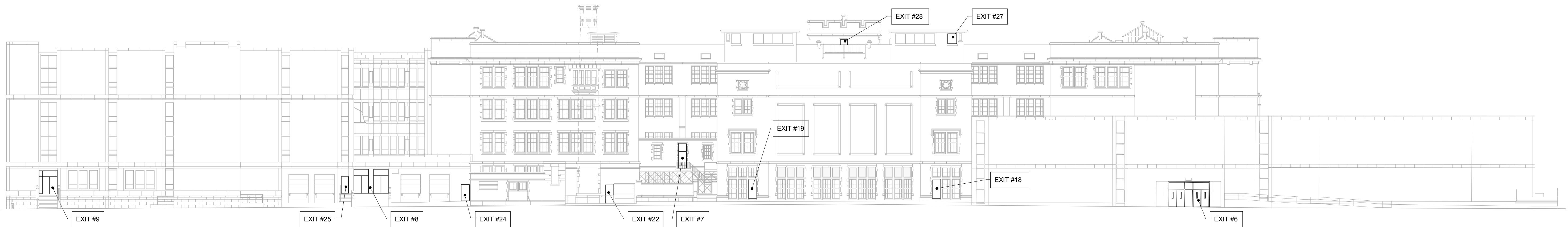
MILWAUKEE HPC
SUBMISSION

Owner:
MILWAUKEE PUBLIC SCHOOLS
1124 NORTH 11th STREET
MILWAUKEE, WI 53233

Project number	7378
Date	4/13/2015

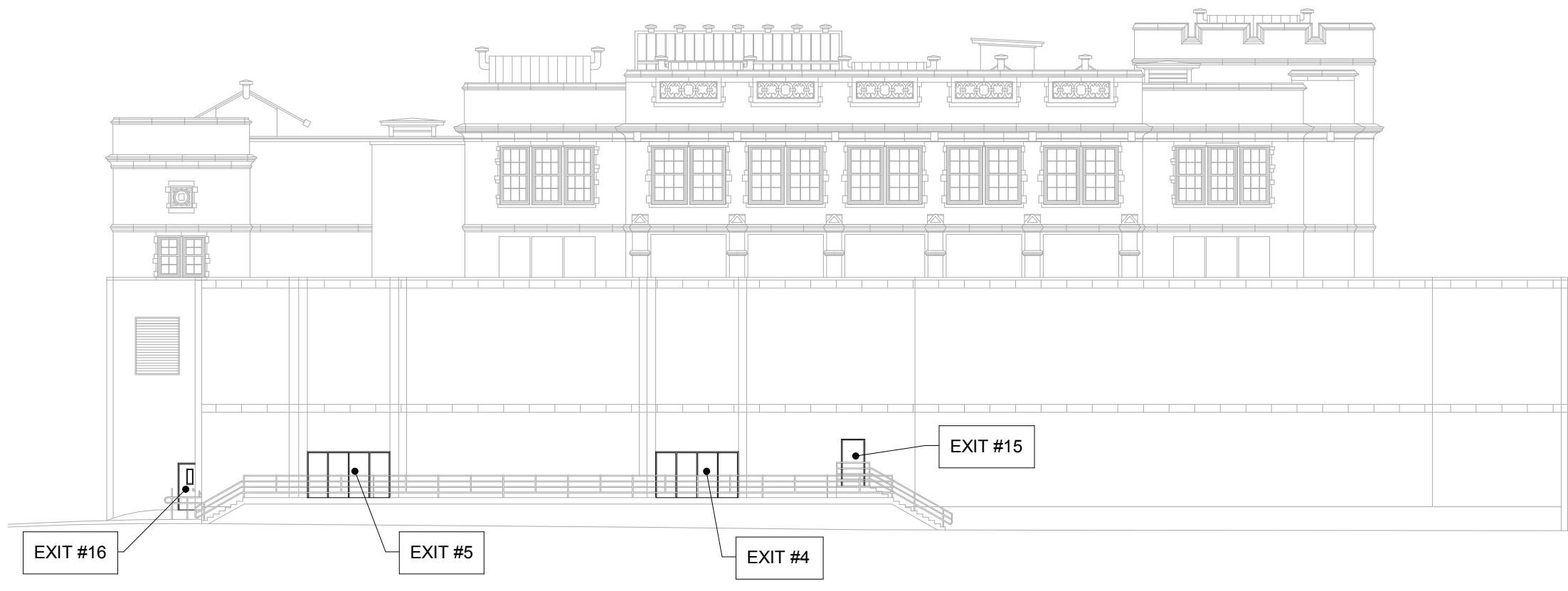
This architectural drawing shows the front elevation of a large, multi-story building. The building features a central entrance with a prominent arched doorway and a decorative pediment. To the left of the central entrance is a large, multi-story wing with a series of windows. To the right of the central entrance is another large, multi-story wing with a series of windows. The drawing includes four exits labeled EXIT #1, EXIT #2, EXIT #3, and EXIT #12. EXIT #1 is located on the right side of the building, EXIT #2 is located at the central entrance, EXIT #3 is located on the left side of the building, and EXIT #12 is located on the far right side of the building. The drawing is a line drawing with no shading or color.

① EAST ELEVATION
 $3/64" = 1'-0"$

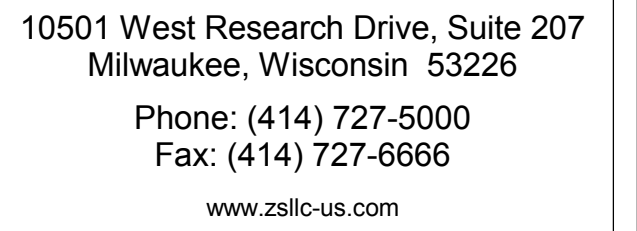


② WEST ELEVATION
3/64" = 1'-0"

3 NORTH ELEVATION
 $3/64" = 1'-0"$



4 SOUTH ELEVATION
3/64" = 1'-0"

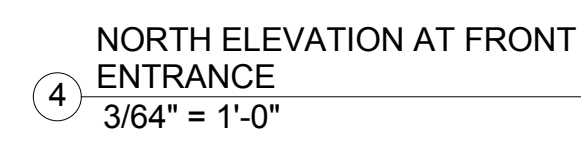
MILWAUKEE HPC
SUBMISSION[illegible]

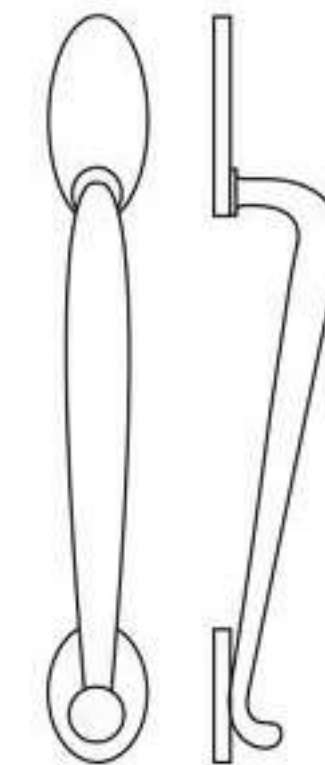
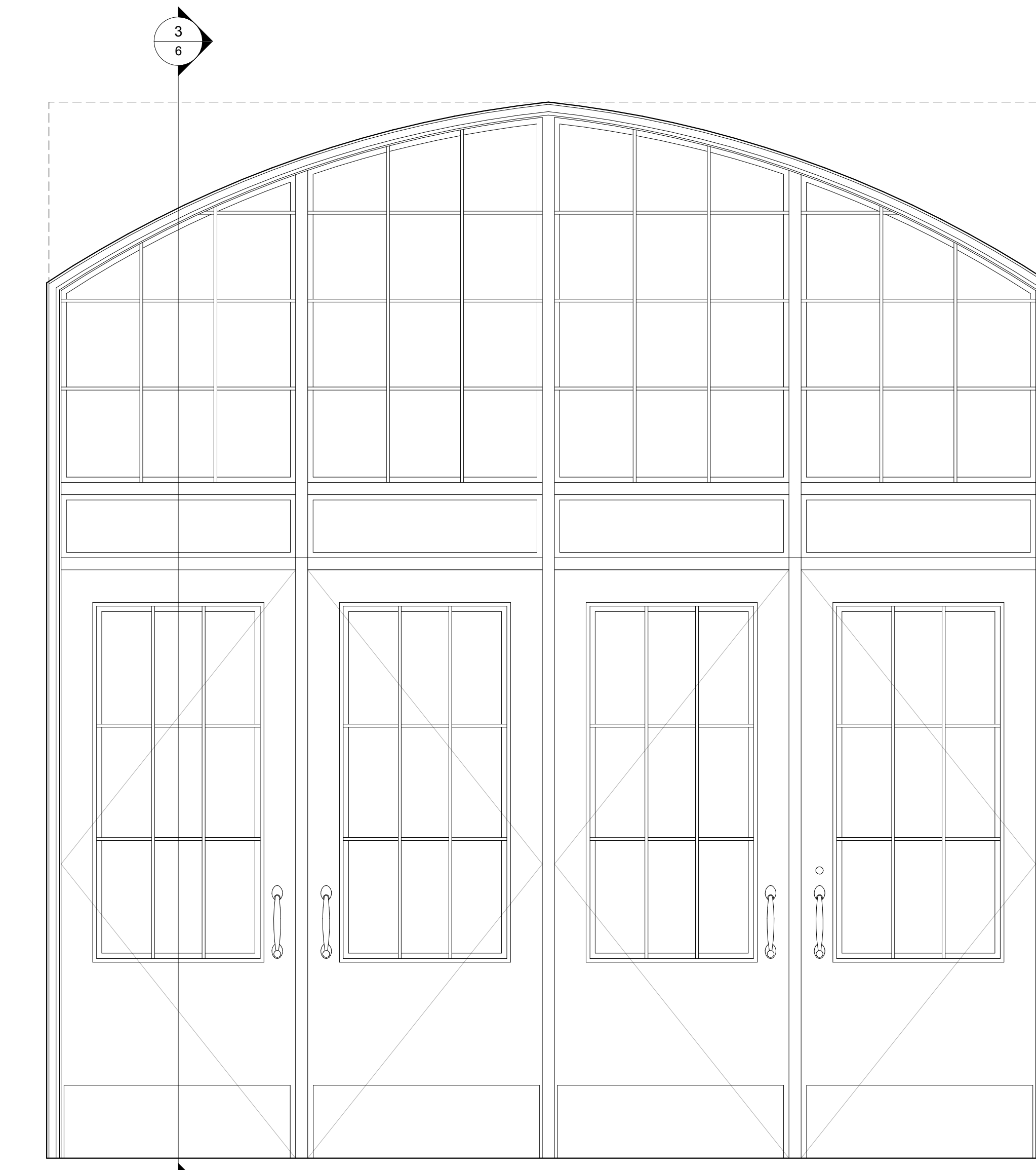
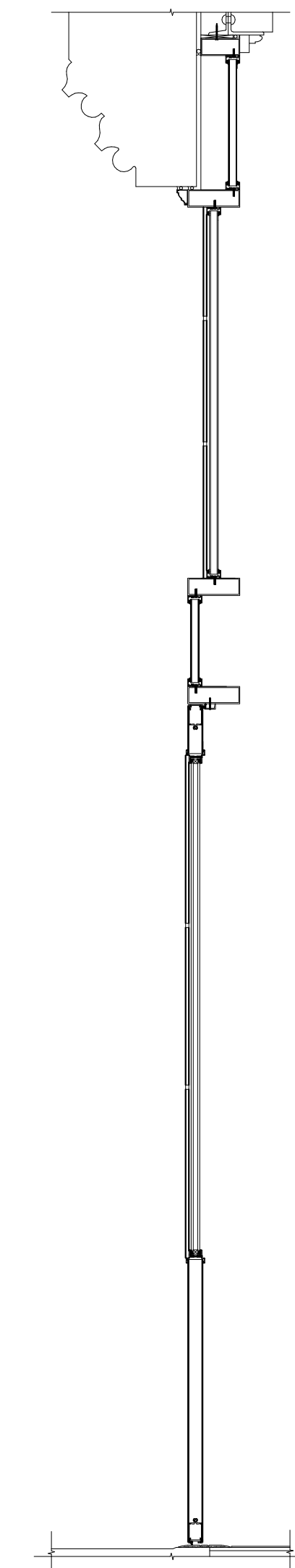
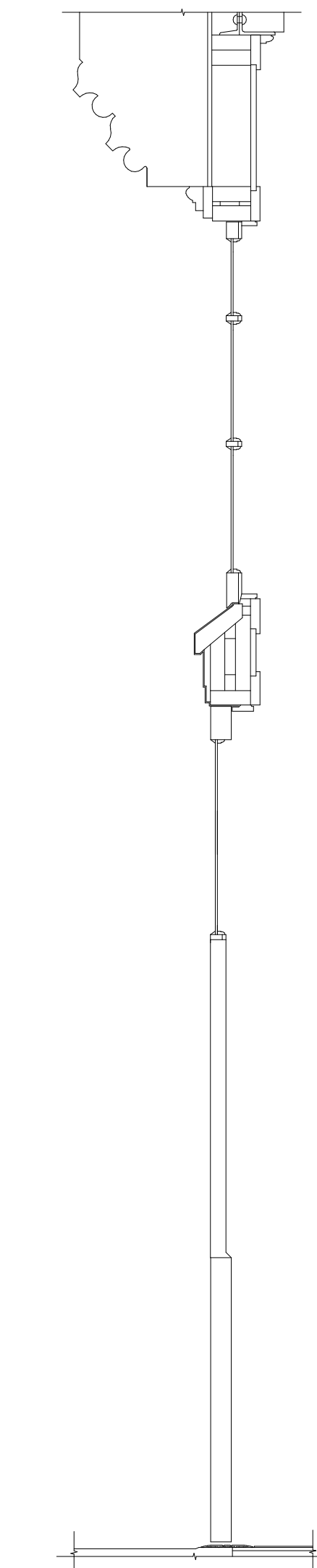
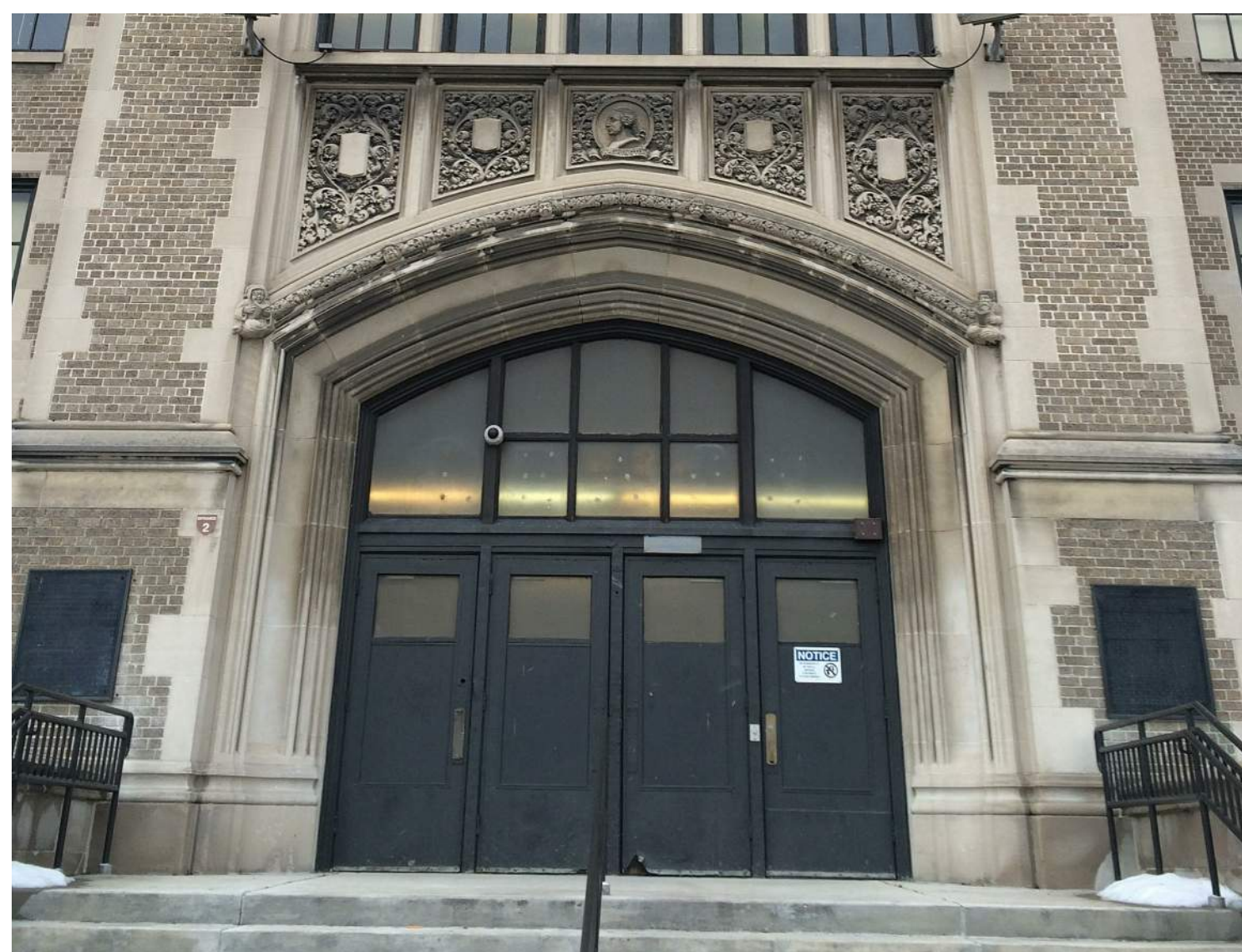
Owner:

MILWAUKEE PUBLIC SCHOOLS
1124 NORTH 11th STREET
MILWAUKEE, WI 53233

COURTYARD AND MISCELLANEOUS ELEVATIONS

Project number	7378
Date	4/13/2015





Milwaukee Public Schools
Washington High School
2525 North Sherman Blvd.
Milwaukee, WI 53210

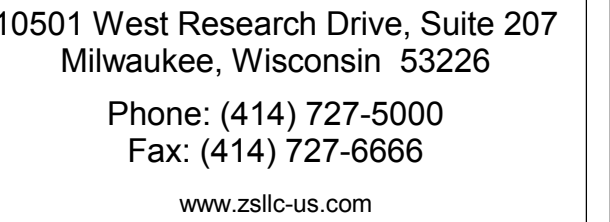
MILWAUKEE HPC
SUBMISSION[illegible]

Owner:

MILWAUKEE PUBLIC SCHOOLS
1124 NORTH 11th STREET
MILWAUKEE, WI 53233

ORIGINAL MAIN
ENTRANCE

Project number	7378
Date	4/13/2015



Milwaukee Public Schools
Washington High School
2525 North Sherman Blvd.
Milwaukee, WI 53210

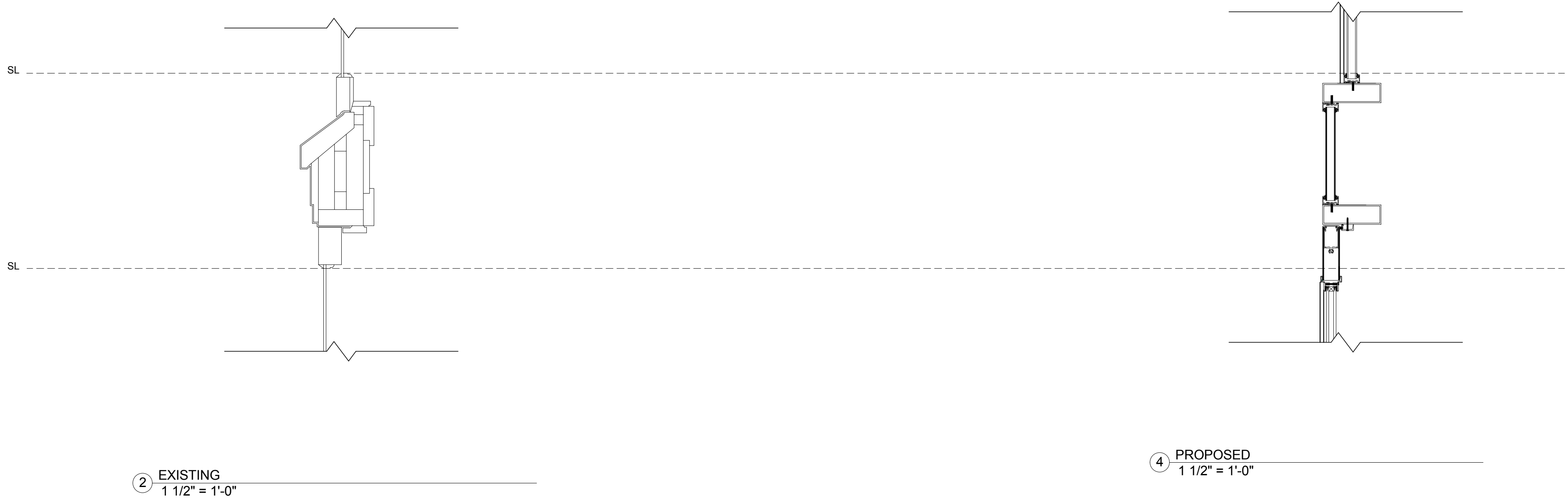
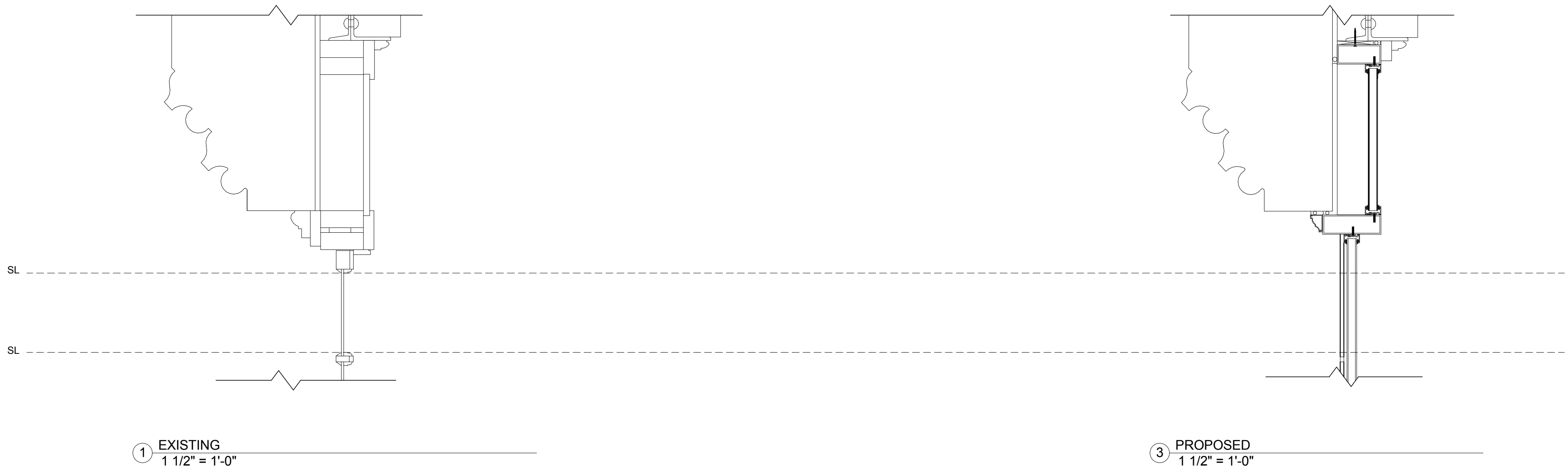
MILWAUKEE HPC
SUBMISSION[illegible]

Owner:

MILWAUKEE PUBLIC SCHOOLS
1124 NORTH 11th STREET
MILWAUKEE, WI 53233

ORIGINAL MAIN ENTRANCE DETAILS

Project number	7378
Date	4/13/2015





Milwaukee Public Schools
Washington High School
2525 North Sherman Blvd.
Milwaukee, WI 53210

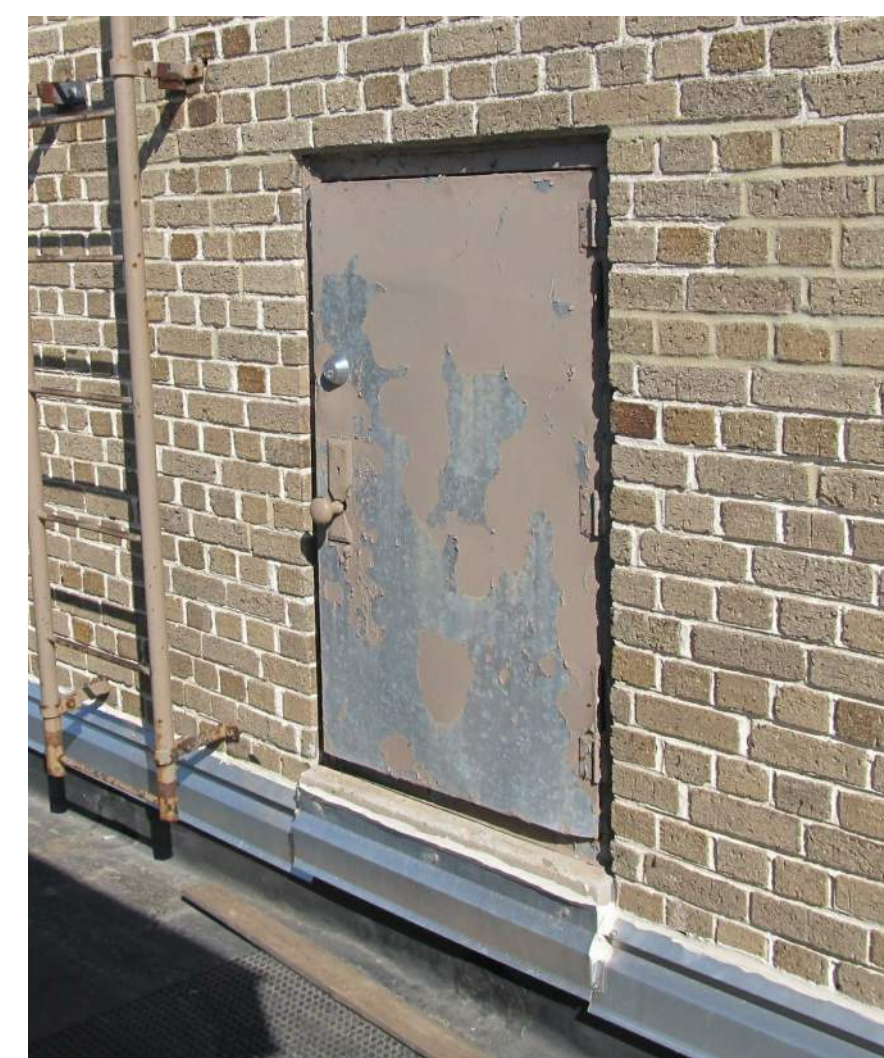
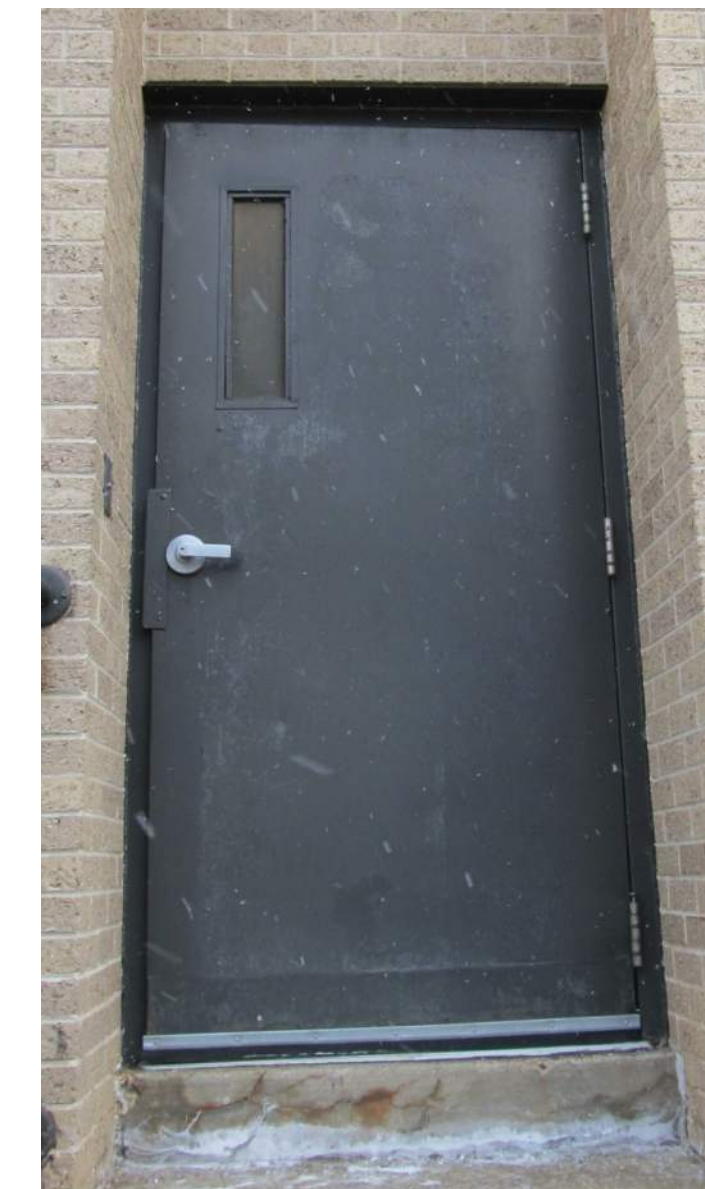
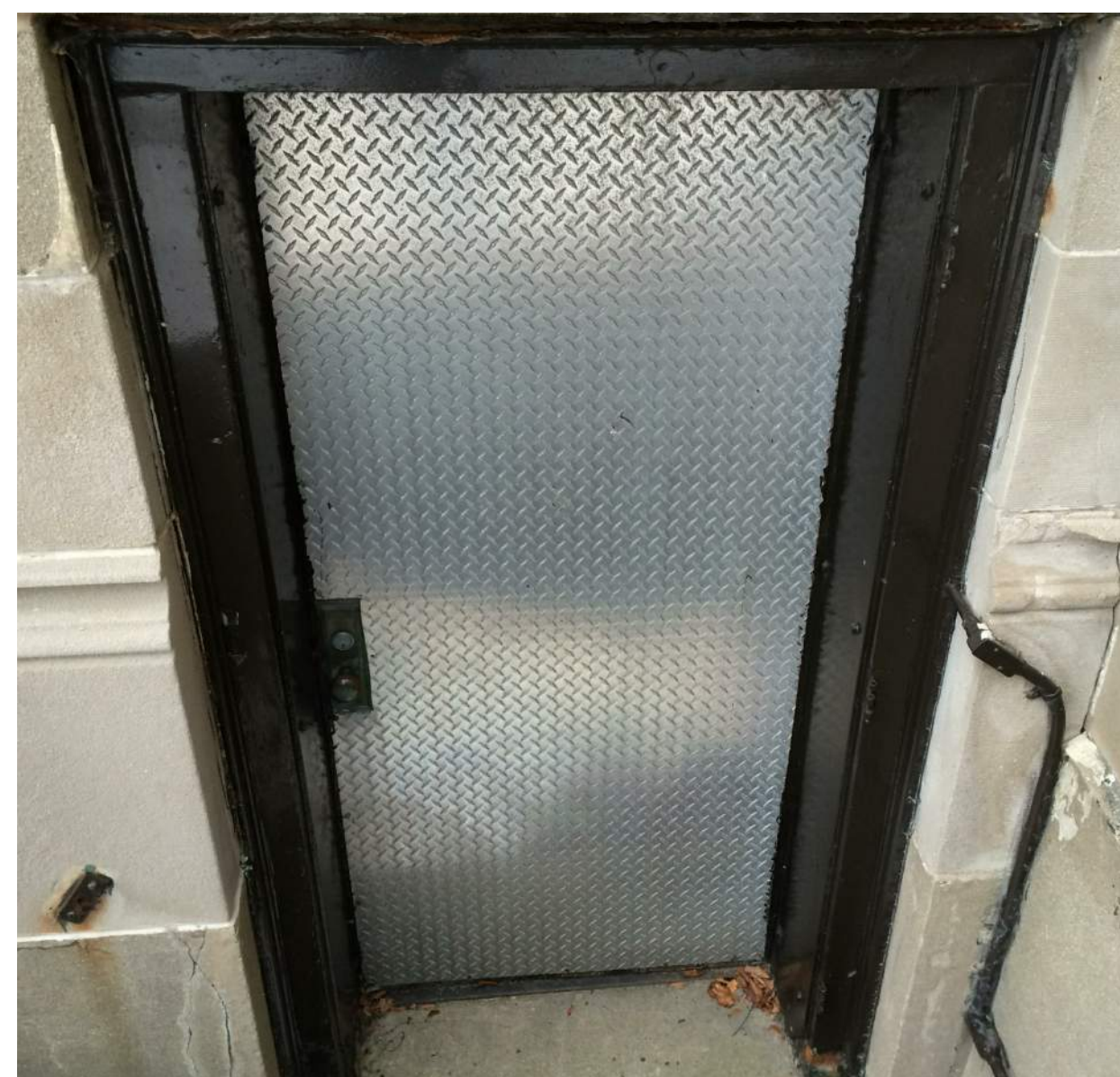
MILWAUKEE HPC
SUBMISSION[illegible]

Owner:

MILWAUKEE PUBLIC SCHOOLS
1124 NORTH 11th STREET
MILWAUKEE, WI 53233

EXISTING DOOR
SCHEDULE
PHOTOS

Project number	7378
Date	4/13/2015



Milwaukee Public Schools
Washington High School
2525 North Sherman Blvd.
Milwaukee, WI 53210

MILWAUKEE HPC
SUBMISSION[illegible]

Owner:

MILWAUKEE PUBLIC SCHOOLS
1124 NORTH 11th STREET
MILWAUKEE, WI 53233

EXISTING DOOR
SCHEDULE
PHOTOS

Project number	7378
Date	4/13/2015

MILWAUKEE HPC
SUBMISSION[illegible]

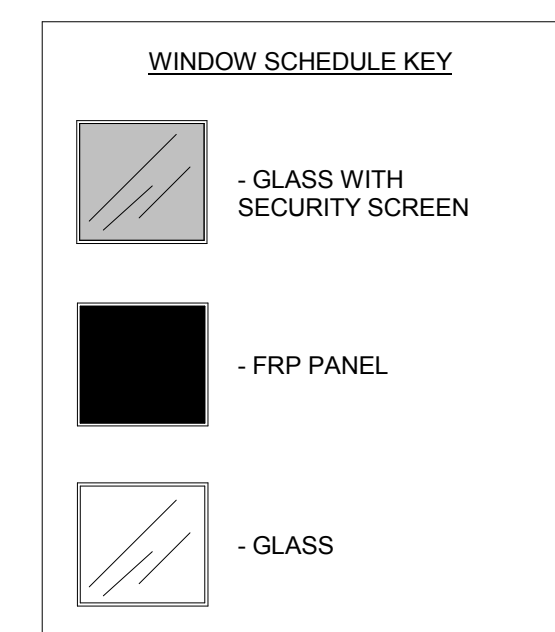
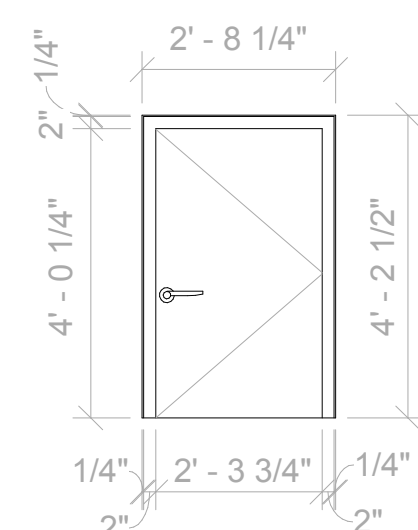
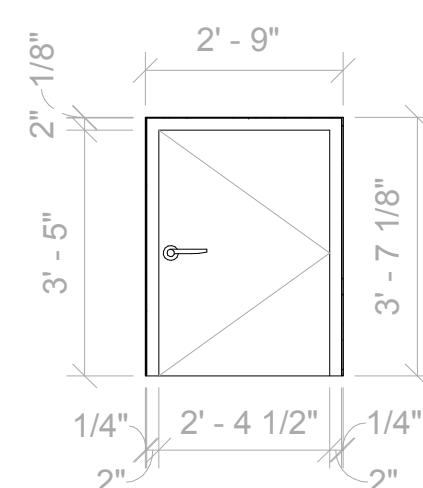
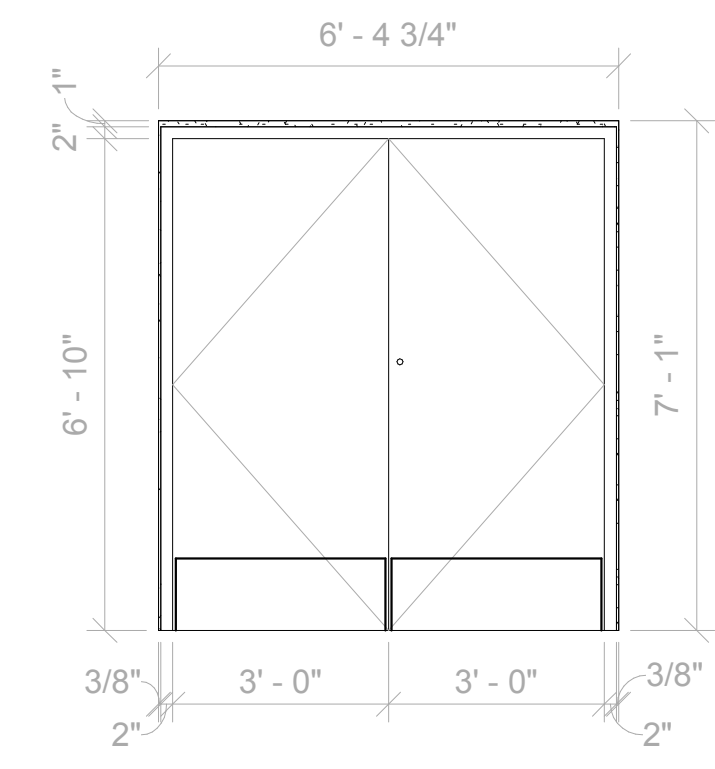
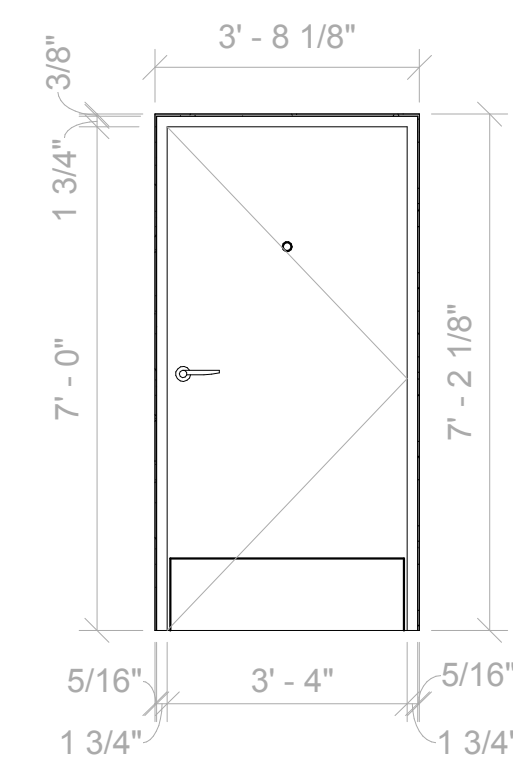
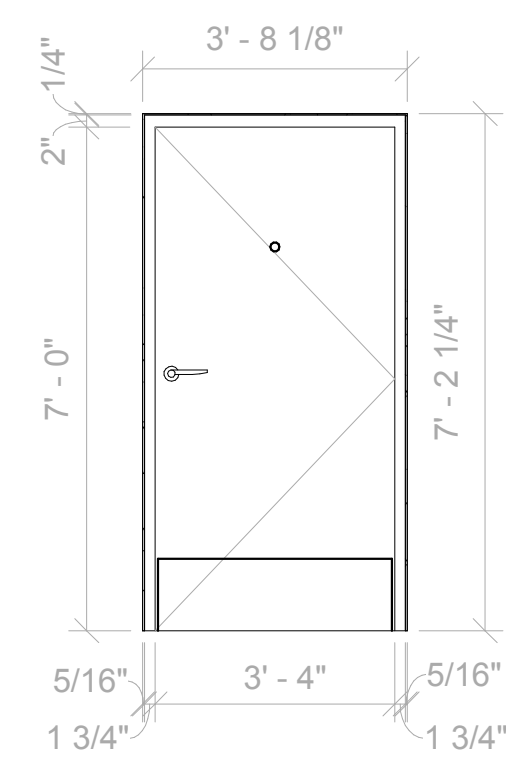
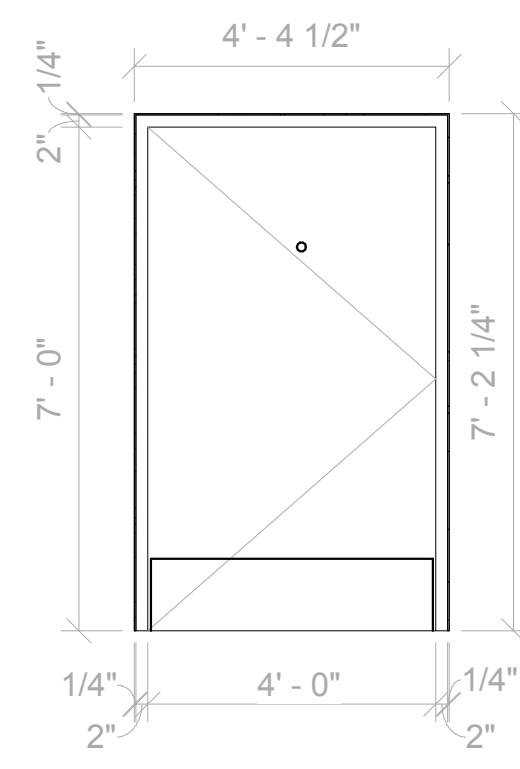
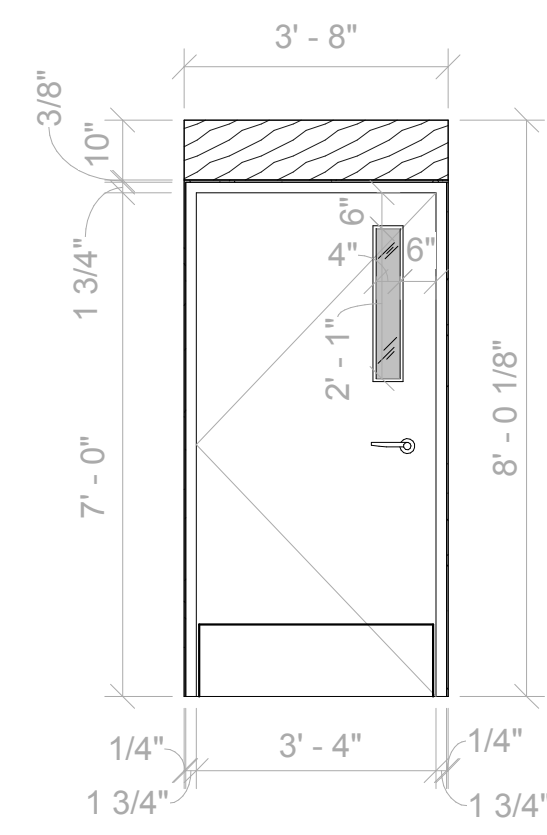
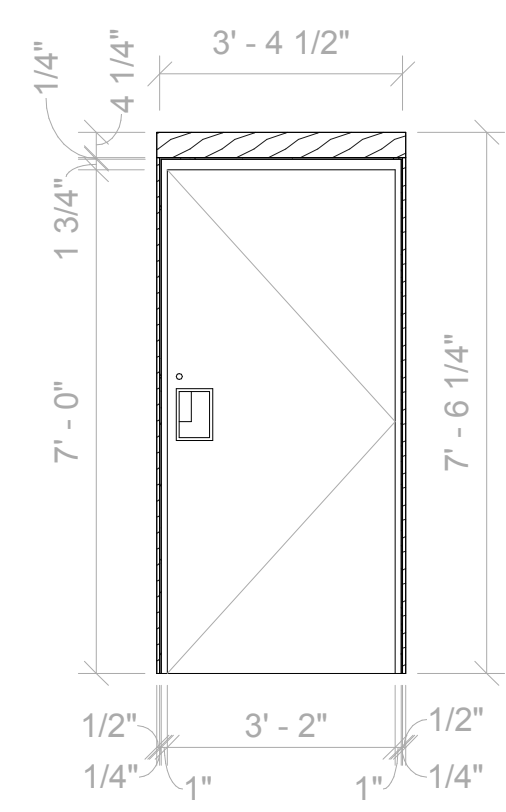
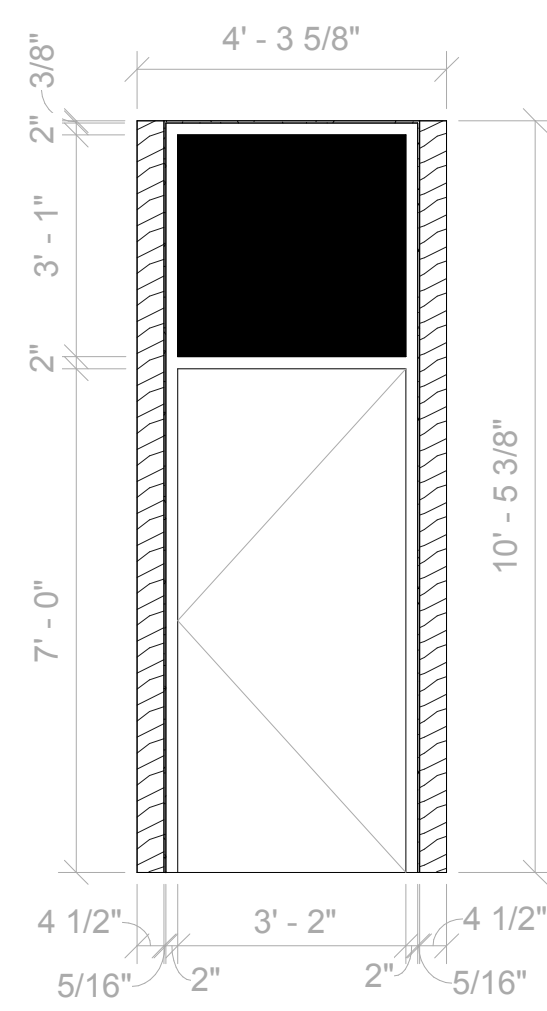
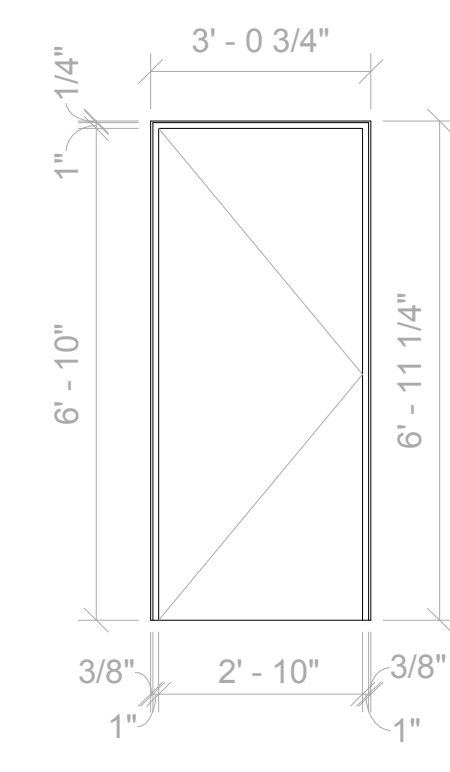
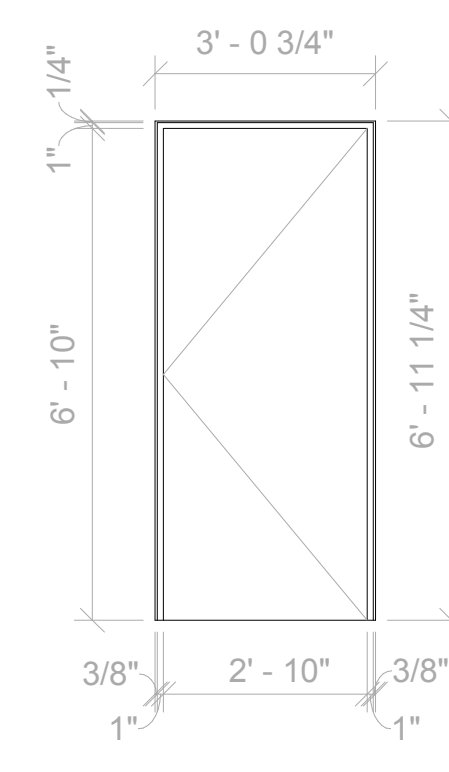
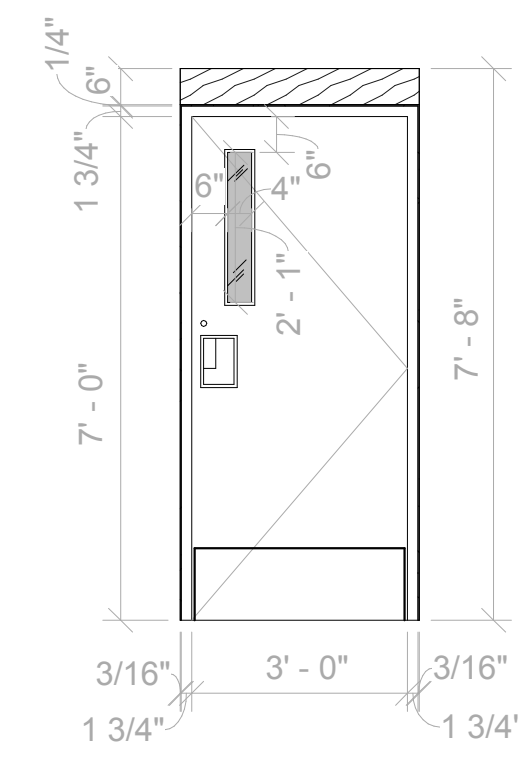
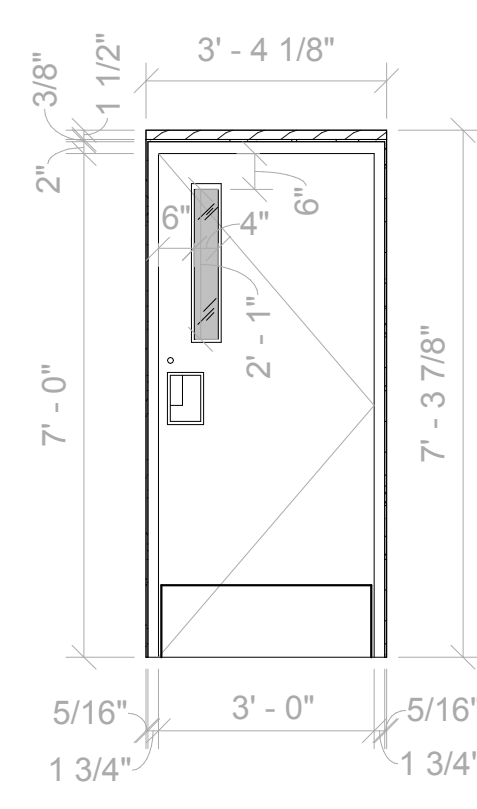
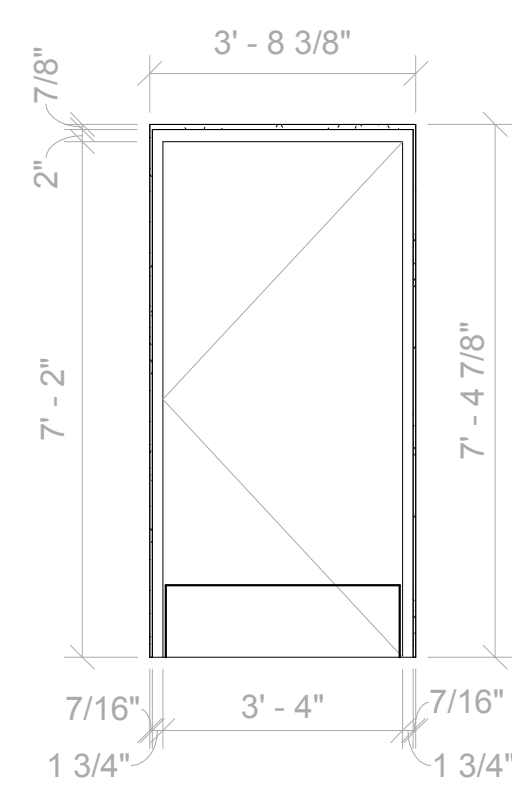
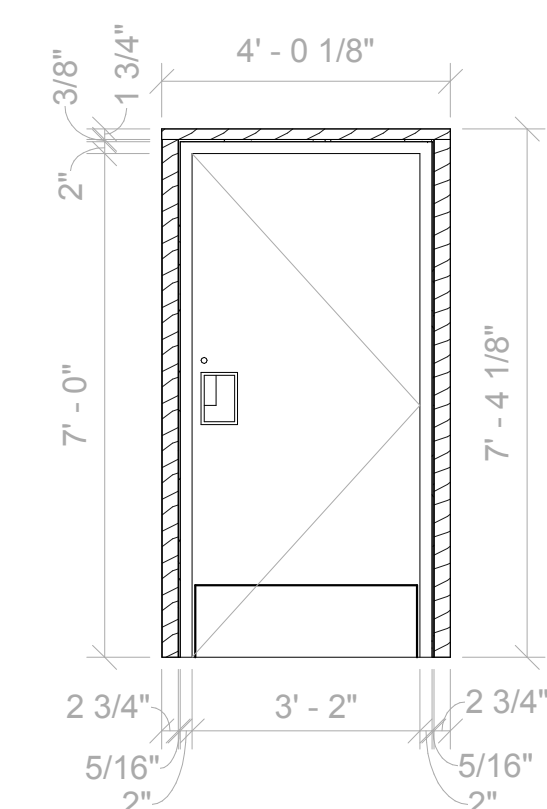
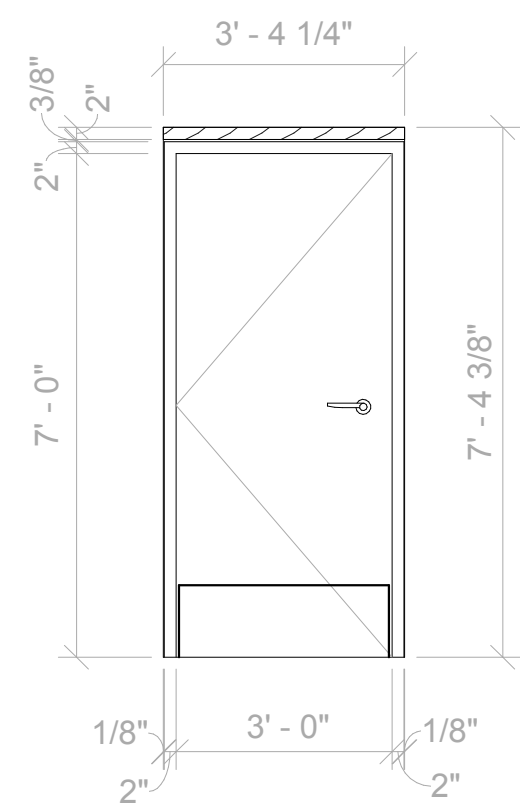
MILWAUKEE PUBLIC SCHOOLS
1124 NORTH 11th STREET
MILWAUKEE, WI 53233

DOOR SCHEDULE

Project number	7378
Date	4/13/2015

EXIT #12

SHERMAN BOULEVARD REPLACEMENT



Milwaukee Public Schools
Washington High School
2525 North Sherman Blvd.
Milwaukee, WI 53210

MILWAUKEE HPC
SUBMISSION[illegible]

Owner:

MILWAUKEE PUBLIC SCHOOLS
1124 NORTH 11th STREET
MILWAUKEE, WI 53233

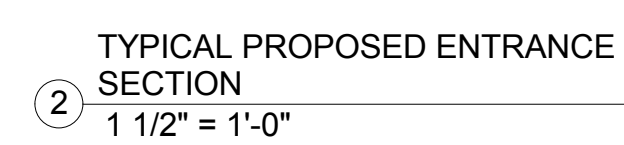
DOOR SCHEDULE

Project number	7378
Date	4/13/2015

MILWAUKEE HPC
SUBMISSION[illegible]

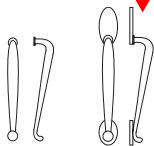
MILWAUKEE PUBLIC SCHOOLS
1124 NORTH 11th STREET
MILWAUKEE, WI 53233

Project number	7378
Date	4/13/2015



These are cast pulls and thick metal push plates — traditional style pulls and plates, but made to commercial quality standards. Heavy gauge material and high quality castings are the basis for this group. Choose from a variety of finishes shown in our price list.

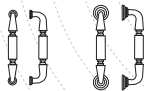
**PROPOSED
ORIGINAL MAIN ENTRANCE
DOOR PULL**



Cast Pulls

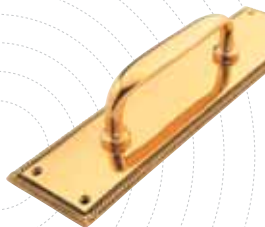
Pull No.	Base Plate	CTC
RM5500	No	6"
RM5502	Yes	6 1/4"
RM5510	No	12"
RM5512	Yes	12 1/4"

Traditional
decorative pulls & plates



Cast Pulls

Pull No.	Base Plate	CTC
RM5520	No	8"
RM5522	Yes	8"



Cast Pulls

Pull No.	CTC
RM5530	5 1/2"
RM5532	7 1/2"
RM5534	12"



Rope Border Cast Plates

Plate No.	Size
RM5596A	3" x 12"
RM5596B	3 1/2" x 15"



Plain Cast Plate - 3/16" Thick

Plate No.	Size
RM5598B	3 1/2" x 15"



Heavy Plates - .090" Thick

Plate No.	Size
RM5590A	3" x 12"
RM5590B	3 1/2" x 15"
RM5590C	4" x 16"



Heavy Plates - .090" Thick

Plate No.	Size
RM5592A	3" x 12"
RM5592B	3 1/2" x 15"
RM5592C	4" x 16"



Heavy Plate - .090" Thick

Plate No.	Size
RM5594B	3 1/2" x 15"



[Search](#)
[Order Forms](#)
[Sales Rep Locator](#)

You are here: [Home](#) > [Products](#) > [Door Pulls & Push Bars](#) > [Recessed Door Pulls](#)

[Products](#) • [Applications](#) • [Specs](#) • [Tech Data](#) • [Sales Info](#) • [Training](#) • [Green](#) • [News](#) • [Gallery](#) • [Site Map](#)

[Home](#) | [About Us](#) | [Employment](#) | [Contact Us](#)

In this section PRODUCTS

Doors

Hardware & Lites

Vision Lites & Muntins

- Rectangular
- Curved
- Colonial
- Custom
- Colors

Door Pulls & Pushbars

Louvers, Grates, Screens

Removable Mullions

Adjustable Hardware

- Bottom Brush

Astragals

Colors

Framing & Panels

Toilet Partitions

Our Flush Pulls Add Style and Improve Safety and Security

[Related Items](#)

Recessed Door Pulls are an ideal choice for doors adjacent to active areas like foyers and gymnasiums where the absence of any projections above the door surface improves safety. They also look great. And since there's no way to attach a rope or chain, our recessed door pulls also help protect against vandalism and forced entry.

The SL-82 and SL-86 Recessed Pulls are for flush doors. The SL-84 and SL-88 are an integral part of the mid-panels in our monumental doors. The SL-86 and SL-88 are specifically designed to facilitate cleaning and sterilization. All Special-Lite recessed pulls meet the ANSI 117.1 Accessibility Standard.

Dimensions

Model	Door Type	Height	Width	Recess Depth	Grip Surface	Bottom Opening
SL-82	Flush	8-1/2" (216mm)	6" (152mm)	1-3/8" (35mm)	7" High x 2" Wide (178mm x 51mm)	NA
SL-86	Flush	8-11/16" (221mm)	6-1/16" (154mm)	1-3/8" (35mm)	5" High x 2" Wide (127mm x 51mm)	1-1/2" (38mm)
SL-84	Monumental	10-7/8" (276mm)	5-3/4" (146mm)	1-3/8" (35mm)	9-3/4" High x 2" Wide (248mm x 51mm)	NA
SL-88	Monumental	10-7/8" (276mm)	5-3/4" (146mm)	1-3/8" (35mm)	7" High x 2" Wide (178mm x 51mm)	1-1/2" (38mm)

Additional Door Pulls & Push Bars

[Surface-Mounted](#)


SL-82 Recessed Door Pull



SL-86 Recessed Door Pull

PROPOSED
DOOR PULL
FOR ALL
DOORS
NOTED TO
HAVE PULLS



SL-84 Recessed Door Pull



SL-88 Recessed Door Pull

[Give us your feedback](#)

Copyright © 2015 Special-Lite, Inc. | Special-Lite® is a registered trademark of Special-Lite, Inc. | [Privacy Policy](#)

PROPOSED LEVER FOR ALL
DOORS NOTED TO HAVE
LEVERS



ND Series

Cylindrical locks

Schlage

ANSI

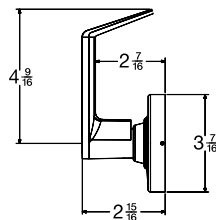
ND96PD

F86

Storeroom lock

- Outside lever always disengaged.
- Entrance by key only.
- Inside lever is always unlocked.
- Vandlgard is designed to disengage outside spindle from latch when locked.

Rhodes (RHO)

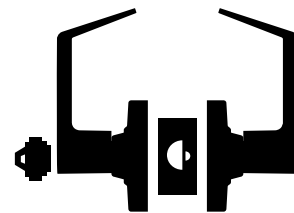


Material: Pressure cast zinc lever; wrought brass rose



Outside

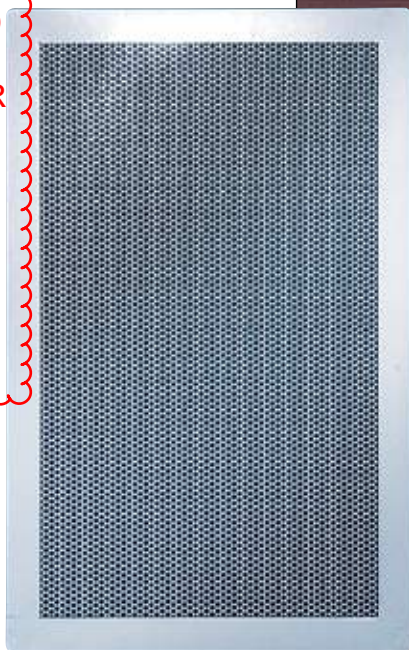
Inside



Available with RX feature



PROPOSED
SECURITY
GRATE FOR
ALL DOOR
SYSTEMS
NOTED TO
HAVE A
SECURITY
GRATE



Security Grate

The Special-Lite® SL-SG349 Security Grate incorporates a strong 1" x 1" x 1/8" steel angle frame perimeter and sturdy metal mesh to provide additional security for doors that are subjected to abuse or vandalism. The security grate can be used over vision lites, bi-fold units, louvers, or other areas where a high level of protection is required. Security grates can be painted to match the door finish or any custom color.

Internal Proximity Card Reader Prep

Many Special-Lite doors can be prepped for field installation of low-profile proximity card readers inside the door. Internal mounting keeps the reader out of sight, out of the weather, and out of the reach of vandals, improving security and protecting the card reader unit.



Vandal Screen

The SL-SG350 Vandal Screen is designed for applications that require a combination of moderate security, excellent visibility, and the convenience of easy removal for glass cleaning. The frame of the new vandal screen is manufactured of anodized or painted aluminum and screws into the Special-Lite® FL-Series Vision Lite Kit Frame with self-retaining, tamper-proof, pin-torx fasteners. The matte black, powder-coated stainless steel, round-hole mesh screen features a 63% open area to maximize vision through the lite. Our vandal screen is compatible with both 1/4" and 1" glazing, and can be custom-fabricated for curves and angled corners for improved design flexibility.

Standard Color Selections

PEBBLE GRAIN FRP

Special-Lite's exclusive SpecLite 3® Fiberglass Reinforced Polyester (FRP) face sheets are available in 12 standard through-molded colors. Non-SpecLite 3® pebble grain FRP face sheets are available painted to match any of our 20 established Kynar 500® colors, or any custom color. Color selections are subject to change without notice.

These color charts are intended for general reference only. Final decisions should be made from actual material samples, which can be ordered directly from our website by using our online order form at www.special-lite.com.



White #5539



Light Grey #5537



Slate Grey #5572



Blue #5533



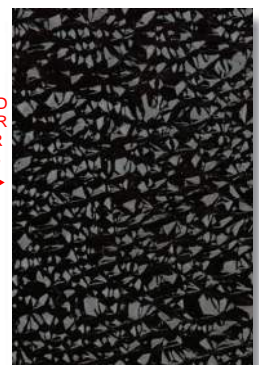
Beige #5531



Dark Grey #5535



Sage Brown #5514



Dark Bronze #5534



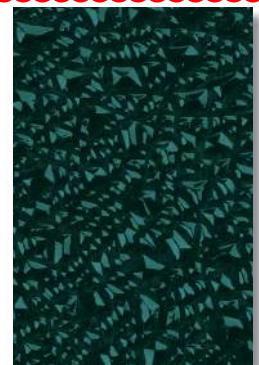
Desert Sand #5571
(formerly Sandstone)



Red #5538



Black #5532



Hartford Green #5570

Kynar 500® is a registered trademark of Arkema, Inc.

Special-Lite, Inc.

P.O. Box 6, Decatur, MI 49045

Ph: 800.821.6531 • Fax: 800.423.7610 • www.special-lite.com

Item #1501-R5

15M 10/14

8400 Series Protection Plates

- Door protection plates are available in .050" thick brass, stainless steel or aluminum; and 1/8" thick high impact polyethylene in clear or black.
- Bevel edge options; specify B4E for all four edges.
- Mounting screw pack furnished standard, 16 screws per pack. Optional screw packs are available for TEK or TORK screw heads. Refer to the following chart for ordering.
- Specify NMH for no mounting holes.
- Specify NMH-A for no mounting holes with adhesive.
- Specify CS for counter sunk mounting holes.
- Specify ERS prepped with extra row of screws.

Kickplate Gasket Tape Tape is recommended when using a brass plate on a metal door to reduce tarnishing from electrolytic oxidation. One tape pack will cover an the perimeters of a 8" x 34" kickplate. Order 8401 Gasket Tape.



8400 Protection Plate 8402 (UL)* Protection Plate

*UL mark appears in upper right corner.

Number of screw packs required by plate size (specify TEK Screws or TORK screws).

	22"-25"	26"-33"	34"-41"	42"-48"
4"-8"	1	1	1	1
9"-16"	1	1	1	1
17"-24"	1	1	1	2
25"-32"	1	1	2	2
33"-40"	1	2	2	2
41"-48"	2	2	2	2

Finishes *brass*

US Number	US3	US4	US10	US10B	US15	US26	US26D
BHMA	605	606	612	613	619	625	626

Finishes *stainless steel*

US Number	US32	US32D
BHMA	629	630

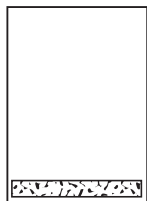
Finishes *aluminum*

US Number	US28
BHMA	628

Finishes *plastic*

Clear and Black

A
Hinges & Pivots



Mop Plates

- Protect the bottom of the pull side of door subject to cleaning and mopping procedures.
- Size Ranges: 4" to 6" high, 22" to 48" wide

B14
Pulls & Plates



Kick Plates

- Protect the bottom of the push side of doors subject to scuffing from foot traffic.
- Recommended for all doors subject to normal use (especially doors using a closer).
- Size Ranges: 8" to 24" high, 22" to 48" wide

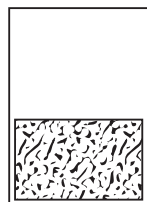
C
Flush Bolts & Coordinators



Stretcher Plates

- Protect doors at specific areas where consistent contact is made by stretchers, service carts or other equipment.
- Usually applied to push side of doors.
- Specify "B4E" Option for beveled edges.
- Size Ranges: 6" to 8" high, 22" to 48" wide

D
Latches, Catches & Bolts



Armor Plates

- Protect lower half of doors from abuse by hard carts, trucks and rough usage.
- Usually applied to push side of single doors and both sides of double acting doors.
- Size Ranges: 26" to 48" high, 22" to 48" wide

E
Stops

F
Exterior Hardware

G
Miscellaneous Hardware