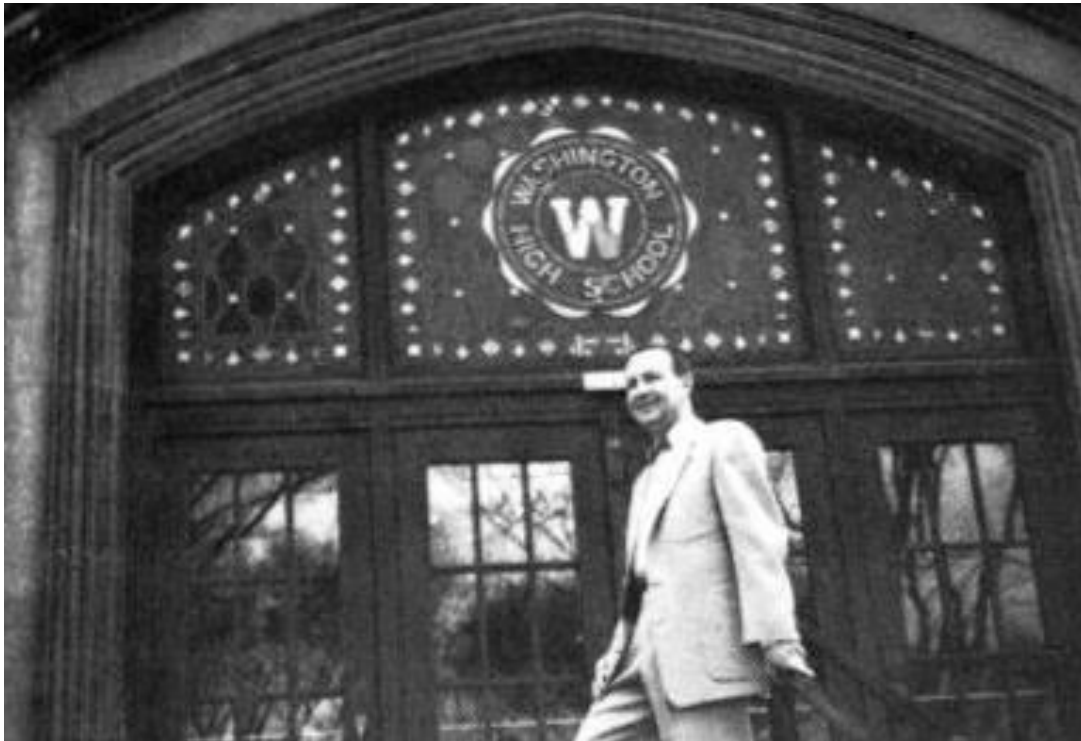




**MILWAUKEE  
PUBLIC SCHOOLS**

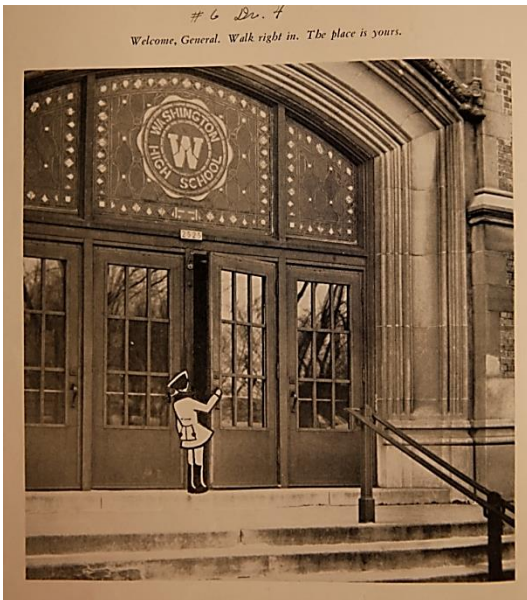
# Historic Washington High School **Stained Glass Window Display**



1930s Stained Glass Window



**MILWAUKEE  
PUBLIC SCHOOLS**



#6 Dec. 4  
*Welcome, General. Walk right in. The place is yours.*



## Window of Colored Glass, June '30 Gift, Decorates Entrance

Filling the center stairway with color, the stained glass window, presented by the June 1930 class, attracted the eyes of Washingtonians returning from their vacations.

"In this beautiful window the wishes of the June class of 1930 have been brought to an artistic realization," wrote Howard Schneider, president of the June 1930 class. "Although the class has been dispersed, this window will serve as a permanent reminder of mutual bonds, in addition to the purpose for which it was originally tendered: that this window be a symbol and outward sign to those who pass that here lives the true Washington spirit."

This note, addressed to Principal George Balzer by Howard, was written in behalf of his class. Passing the center stairway and seeing that the window had been installed, Howard decided to write Mr. Balzer a note expressing the sentiment of the class of 1930.

The window consists of various ornate panes, colored purple and gold. In the center is a purple circle enclosing a gold "W"—the school seal.

Carl Van Treeck, a European artist, designed and completed the window. Van Treeck has had a long and successful career in staining glass windows for cathedrals in the United States.

Sketches for this window were sent in for two years before the final one was selected.

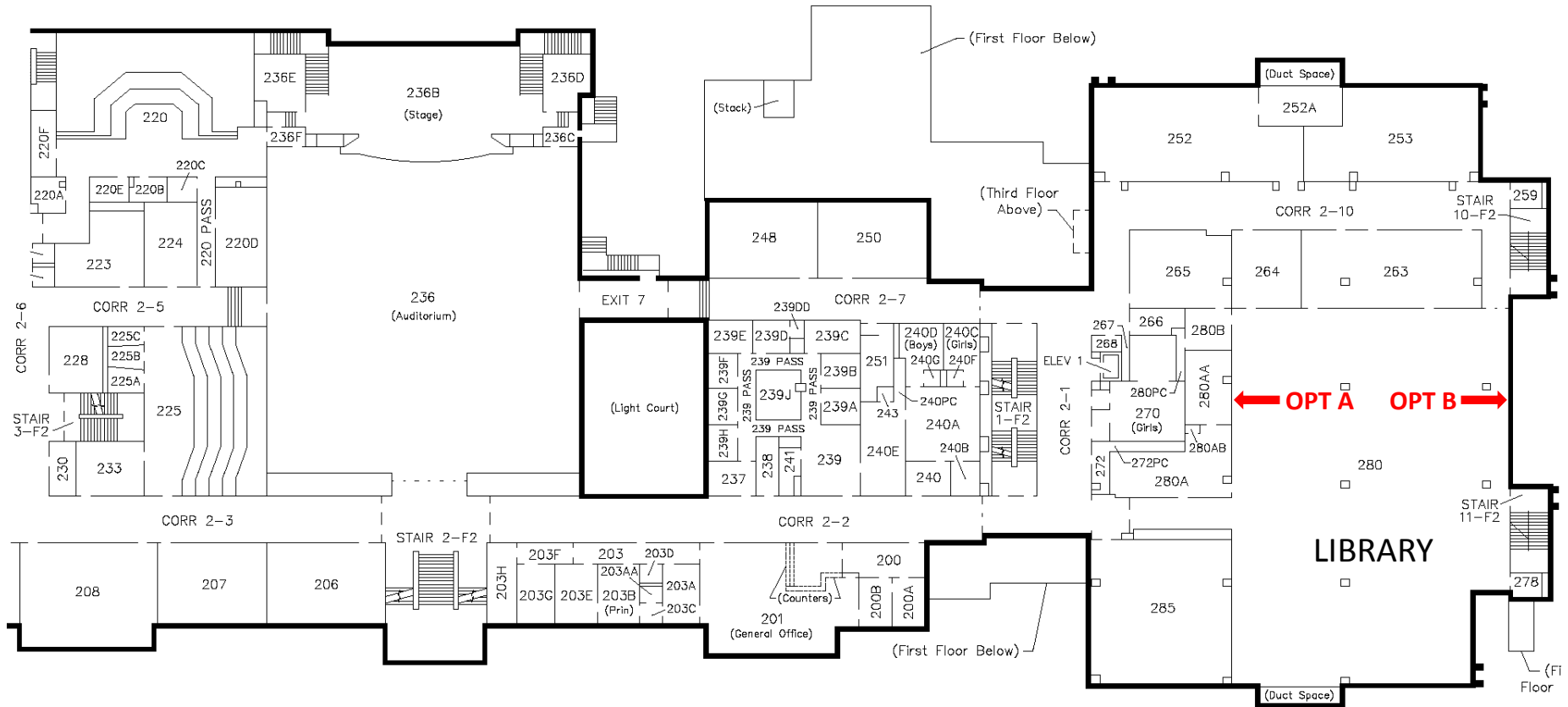
**1930s Stained Glass Window**



**MILWAUKEE  
PUBLIC SCHOOLS**

# Final Location

## Washington High School Library



Display Case For 1930s Stained Glass Window







**MILWAUKEE  
PUBLIC SCHOOLS**

# Estimated Costs

\$ 5,100	<b>MPS Carpenter Mill Shop:</b> Display Case & Framing
\$ 1,650	<b>MPS Paint /Glass Shop:</b> Stain & Finish Display Unit and Install Glass for Display Case
\$ 5,000	<b>MPS Electrical Shop:</b> Install Backlighting
<u>+ \$ 1,500</u>	<b>MPS Design &amp; Construction:</b> Contingency, Fees, & Miscellaneous Owner Costs.
<b>Total \$ 13,250</b>	



Display Case For 1930s Stained Glass Window