



LIVING WITH HISTORY

Certificate of Appropriateness

Milwaukee Historic Preservation Commission/200 E. Wells Street/Milwaukee, WI 53202/phone 414-286-5712/fax 414-286-3004

Property 1809 N. 2ND ST. Brewers Hill Historic District
Description of work Applicant wants to install three storm doors. Two will be at the front and one at the rear back entrance. They will be full view glass and made of wood.
Date issued 3/26/2015 PTS ID 101505 COA

In accordance with the provisions of Section 320-21 (11) and (12) of the Milwaukee Code of Ordinances, the Milwaukee Historic Preservation Commission has issued a certificate of appropriateness for the work listed above. The work was found to be consistent with preservation guidelines. The following conditions apply to this certificate of appropriateness:

The new wood storm doors are to be installed as shown.

All work must be done in a craftsman-like manner, and must be completed within one year of the date this certificate was issued. Staff must approve any changes or additions to this certificate before work begins. Work that is not completed in accordance with this certificate may be subject to correction orders or citations. If you require technical assistance, please contact Carlen Hatala of the Historic Preservation staff as follows: Phone: (414) 286-5722 Fax: (414) 286-5722 E-mail: chatala@milwaukee.gov.

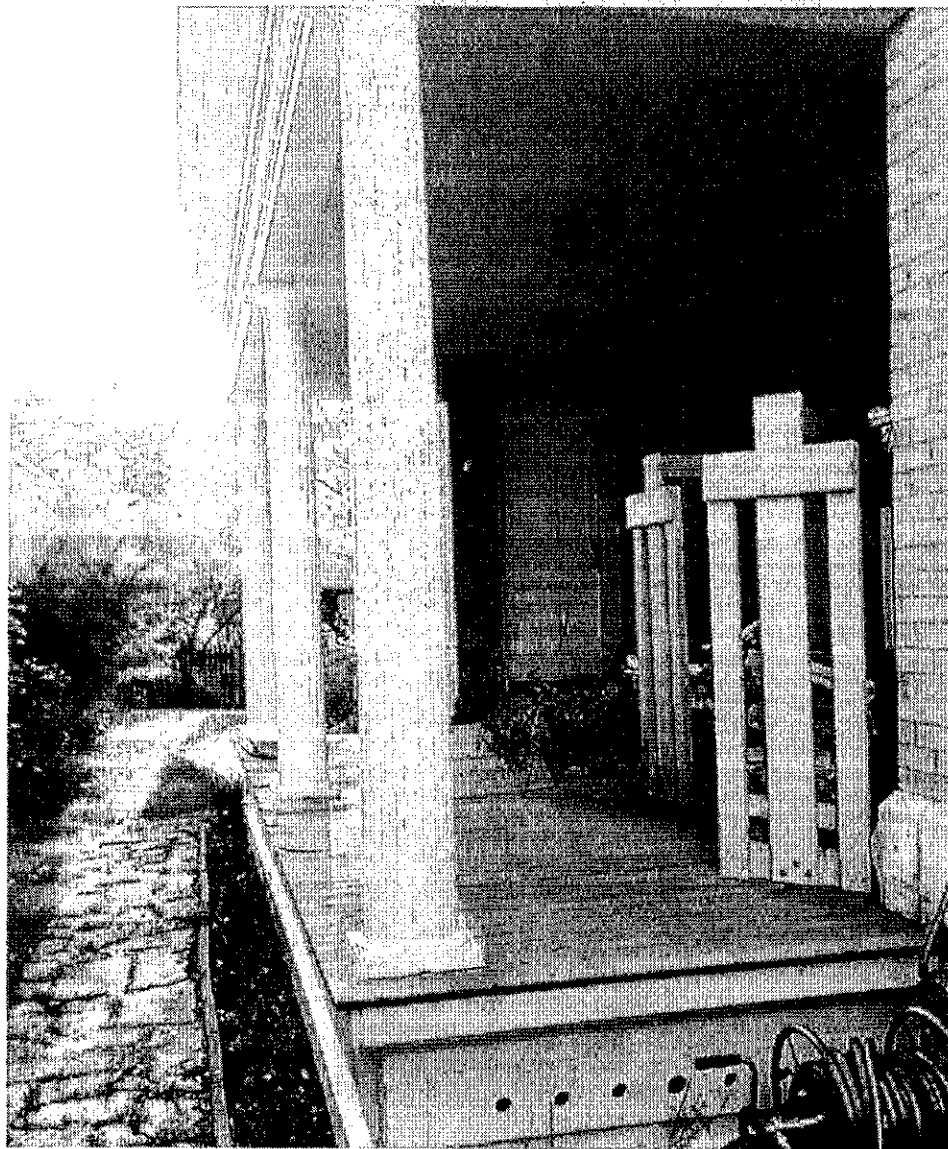
If permits are required, you are responsible for obtaining them from the Milwaukee Development Center. If you have questions about permit requirements, please consult the Development Center's web site, www.milwaukee.gov/build, or call (414) 286-8210.

City of Milwaukee Historic Preservation Staff

Copies to: Development Center, Ald. Milele Coggs, Contractor, Inspector Peter Schwartz (286-2537)



**Storm doors to
be installed at
front entrances**



**Storm door to be installed
at rear entrance**

South side of building with rear entrance



Pella.com

<http://www.pella.com/doors/explore-door-styles/storm-doors/fullview-storm-door>

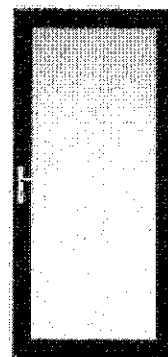


MENU

Explore Door Styles

Example of type of storm door

Pella® Fullview Storm Door



Pella® Fullview storm doors feature interchangeable full glass and full screens — use the one you want to control your light, view and ventilation.

Features

- Choice of up to eight frame colors, three handle finishes and a variety of glass options
- Select Expressions® Glass Collection available (Select models; sold separately)
- Solid brass handle — inside and out — with multipoint keyed deadbolt
- Interchangeable full screen
- One-Touch® door close that holds door open at the touch of a button

Design and performance specifications



1 of 4

8/13/14, 6:28 PM

Sample door at left. Product information at right.