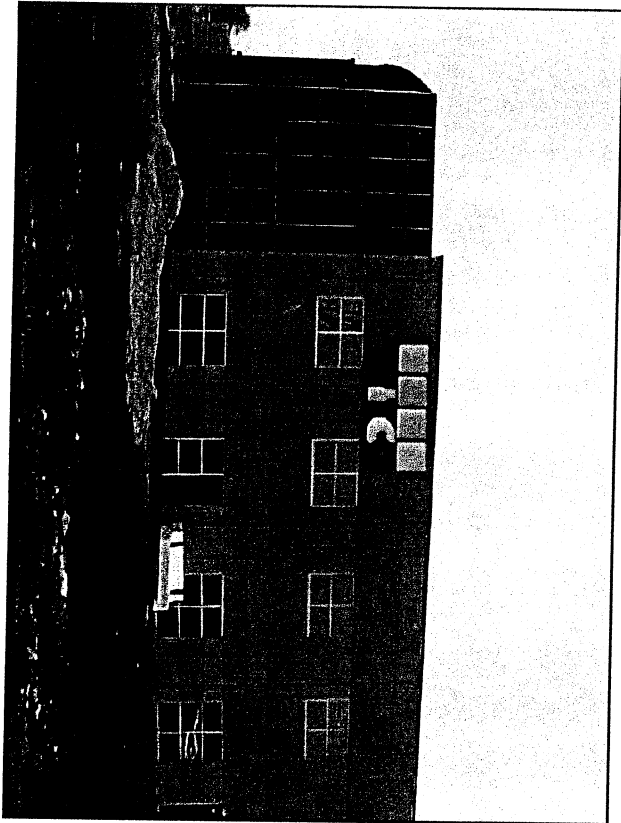
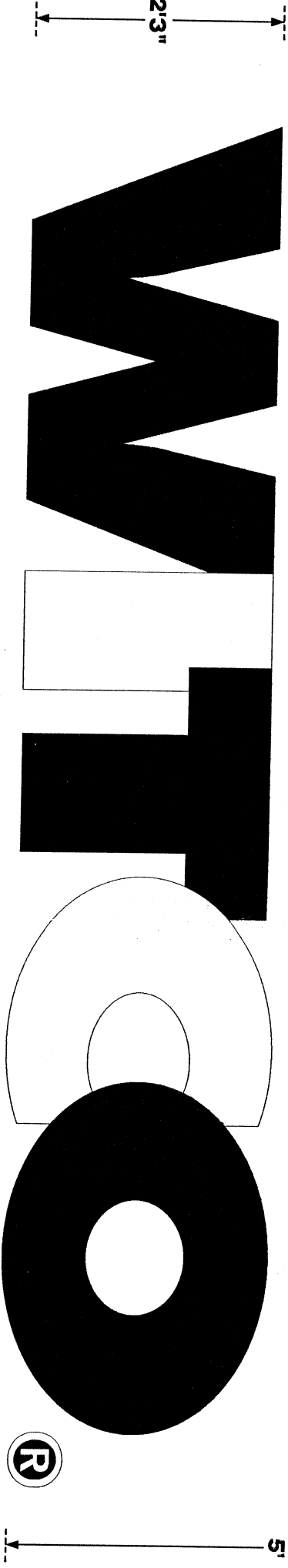
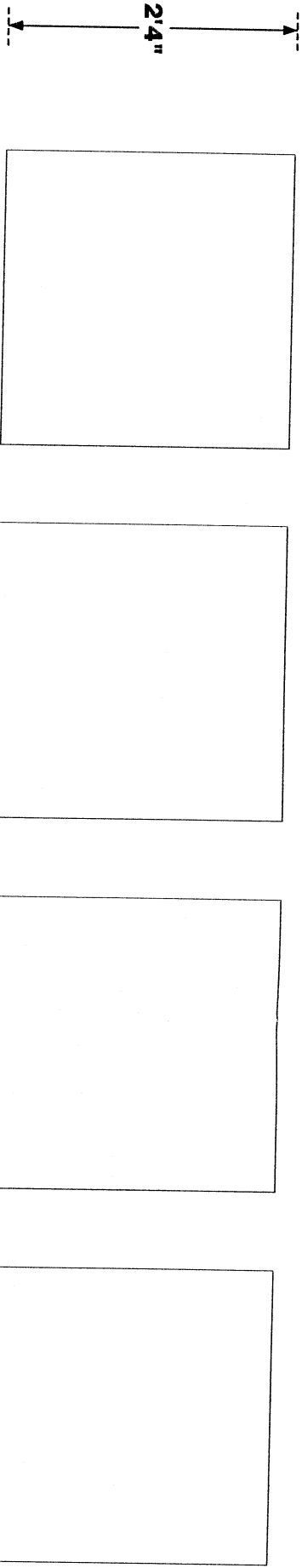


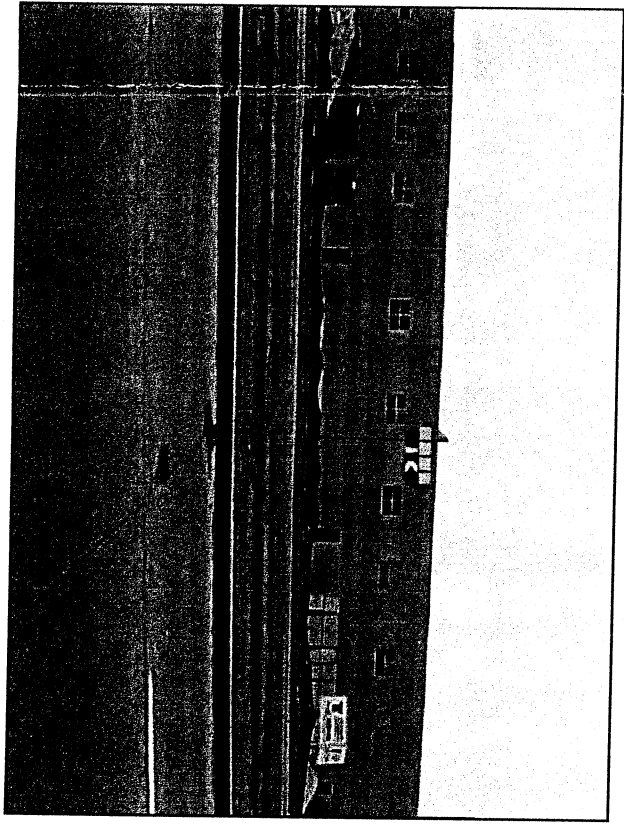
EXHIBIT A

File No. 010060
2ND/c File

11'5.5"



WEST ELEVATION



NORTH ELEVATION

Client
WITCO

Job Number
JK

Drawing #
2

Scale
3/4"=1'

Date:
10-5-00

Rev #
1

Date of Rev #
3-22-01

Rev #
2

Date of Rev #
4-4-01

Sign Specifications
REVERSE ILLUMINATED
QUANTITY: TWO (2)
.125 ROUTED ALUM. FACES
9" DEEP .063 ALUM. RETURNS
15MM GOLD NEON
.177 CLEAR LEXAN BACKING
SELF CONTAINED TRANSFORMERS
RAISED 2" OFF BUILDING
U.L. APPROVED FABRICATION
U.L. APPROVED INSTALLATION

Colors
MAP BLACK
MAP CUSTOM "HONEY YELLOW"
200281131

Approved by



P.O. Box 085179
Racine, WI 53408-5179
PH: (262) 554-6066 • Fax: (262) 554-0574

NOTICE: The ideas and designs contained in this original and unpublished drawing are the sole property of Michael's Signs, Inc. and MAY NOT BE USED OR REPRODUCED in whole or in part without written permission.

NOTE: DUE TO THE PHYSICAL LIMITATIONS OF THE PAPER AND INK INVOLVED IN THIS PRINTING PROCESS, THIS CUSTOM ARTWORK IS NOT INTENDED TO PROVIDE AN EXACT MATCH TO THE ACTUAL FINISH PAINTED PRODUCT.