



# Certificate of Appropriateness

Milwaukee Historic Preservation Commission/200 E. Wells Street/Milwaukee, WI 53202/phone 414-286-5712/fax 414-286-3004

**Property** 1013 W. HISTORIC MITCHELL ST. Mitchell Street Historic District  
**Description of work** INSTALL NEW AWNING OVER STOREFRONT WINDOWS  
**Date issued** 11/14/2014 PTS ID 99070 COA, awning

In accordance with the provisions of Section 320-21 (11) and (12) of the Milwaukee Code of Ordinances, the Milwaukee Historic Preservation Commission has issued a certificate of appropriateness for the work listed above. The work was found to be consistent with preservation guidelines. The following conditions apply to this certificate of appropriateness:

All work must be done according to the drawings, and specifications contained in this COA. The material for the awning must be of a non-shiny acrylic variety and no lights can be installed under the canopy.

All work must be done in a craftsman-like manner, and must be completed within one year of the date this certificate was issued. Staff must approve any changes or additions to this certificate before work begins. Work that is not completed in accordance with this certificate may be subject to correction orders or citations. If you require technical assistance, please contact Paul Jakubovich of the Historic Preservation staff as follows: Phone: (414) 286-5712 Fax: (414) 286-3004 E-mail: [pjakub@milwaukee.gov](mailto:pjakub@milwaukee.gov).

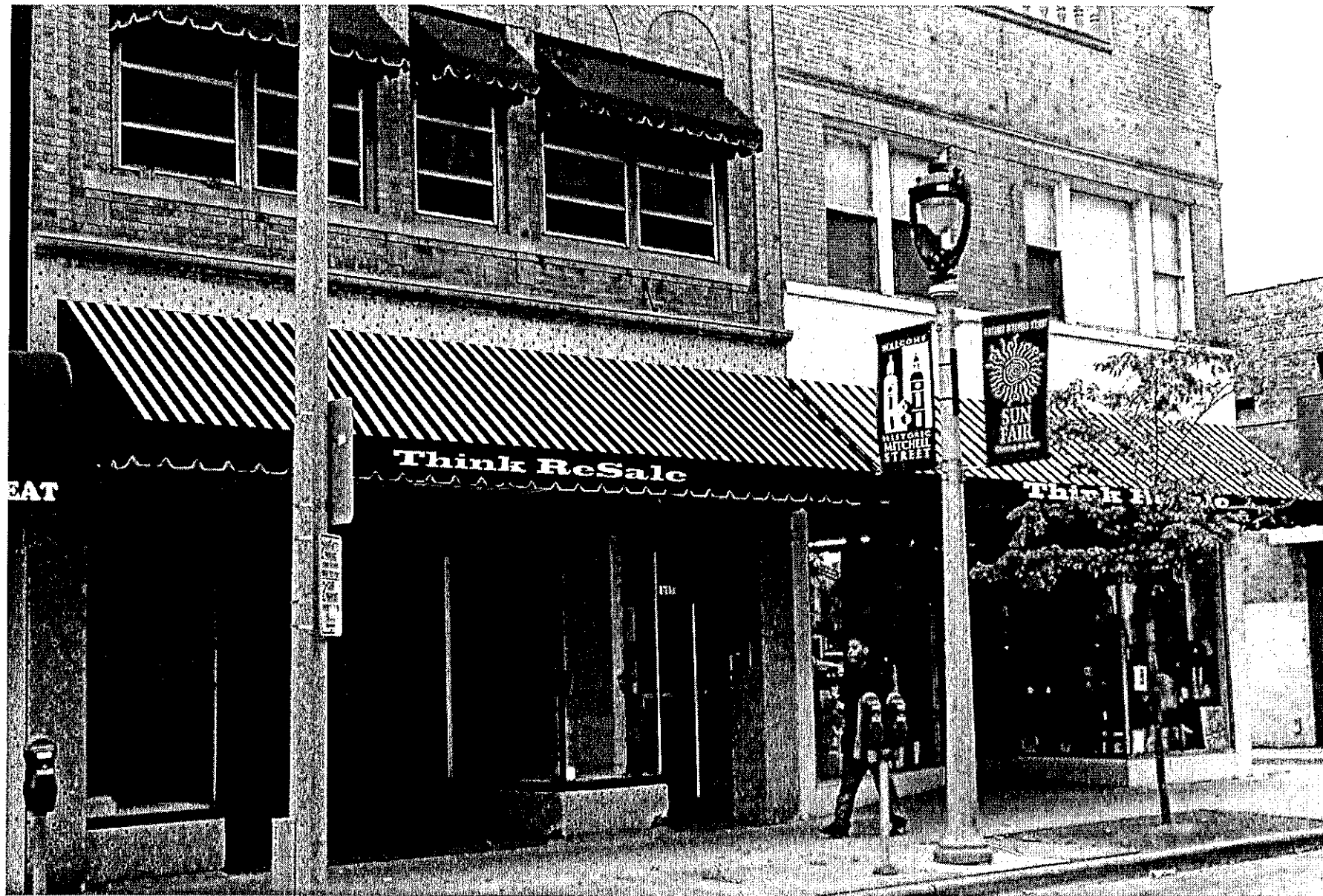
If permits are required, you are responsible for obtaining them from the Milwaukee Development Center. If you have questions about permit requirements, please consult the Development Center's web site, [www.milwaukee.gov/build](http://www.milwaukee.gov/build), or call (414) 286-8210.

Paul Jakubovich  
City of Milwaukee Historic Preservation

Copies to: Development Center, Ald. Jose Perez, Contractor Classic Signs, Inspector Construction Inspector (286-2513), Inspector Heidi Weed



Install new awning over this storefront to match the existing "Think ReSale" awning.



Rendering of new awning at 1013 W. Historic Mitchell Street