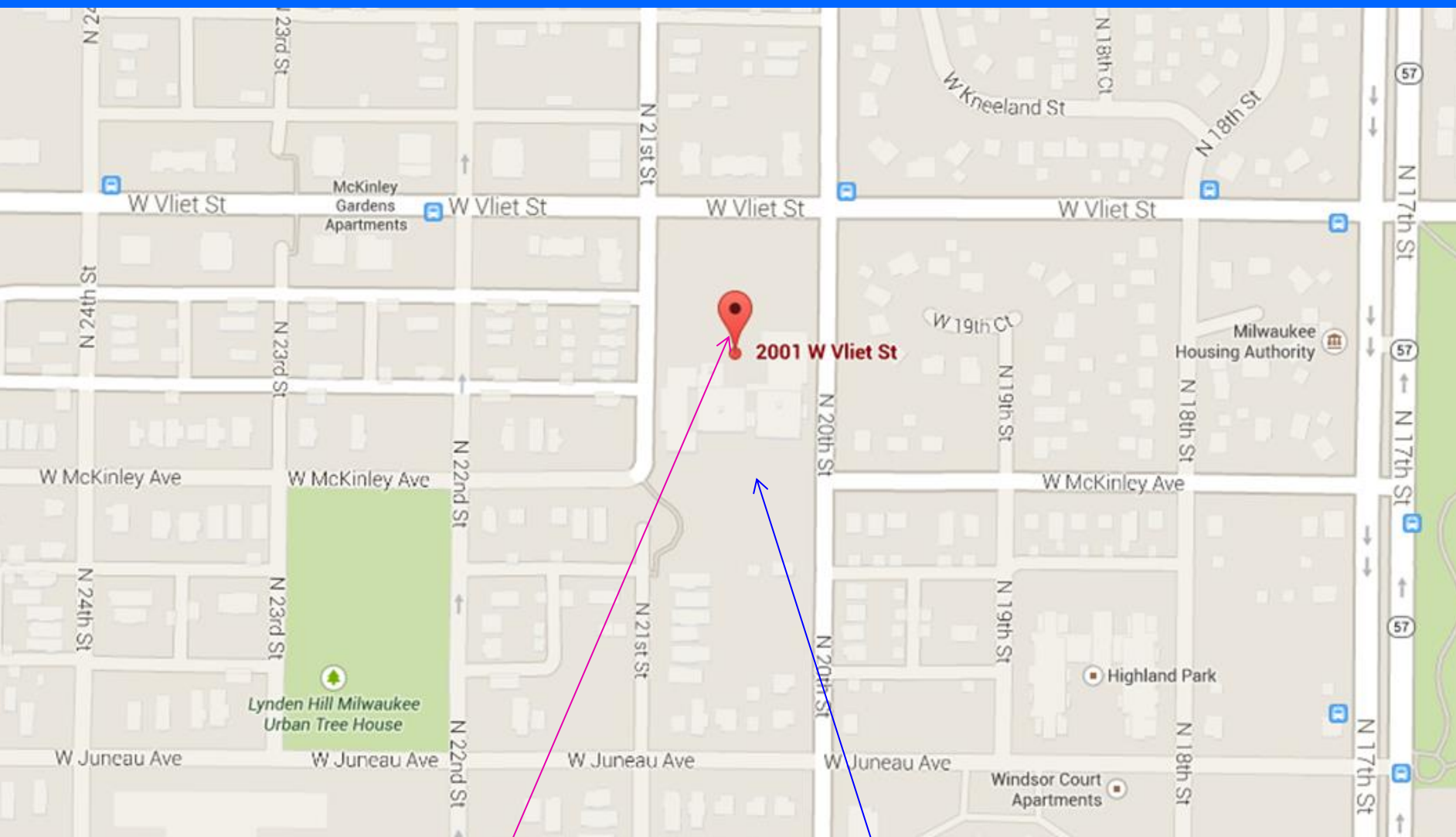




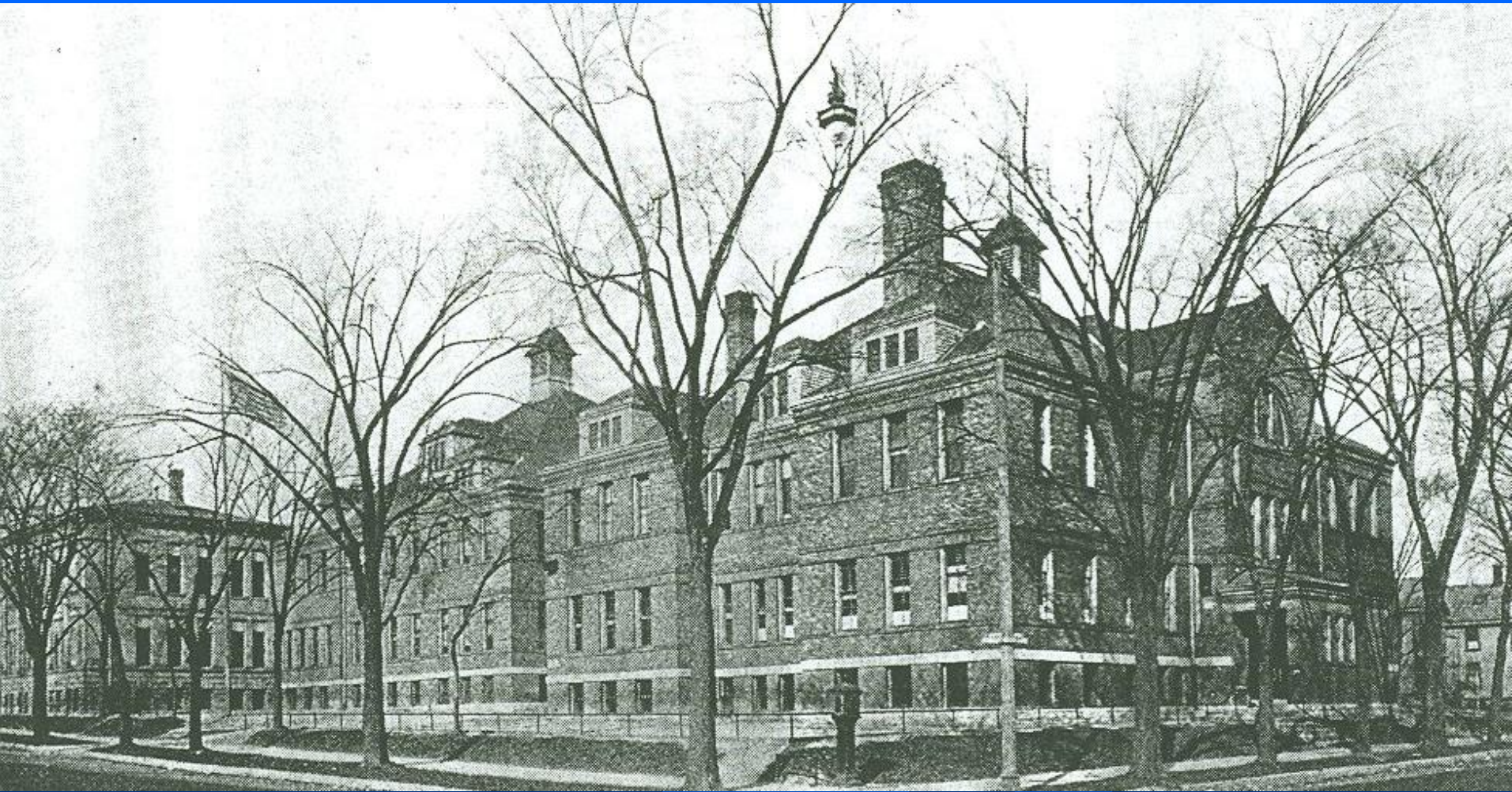
Historic Preservation Commission Meeting September 8, 2014

- Good Afternoon!
Please sign in at the door
- If you wish to speak on an issue or have your opinion noted by the commission, please fill out a form at the door and hand it to us

PUBLIC HEARING
ON THE HISTORIC DESIGNATION
OF THE
FIFTEENTH DISTRICT SCHOOL / MCKINLEY
SCHOOL AT
2001 W. VLIET STREET AND

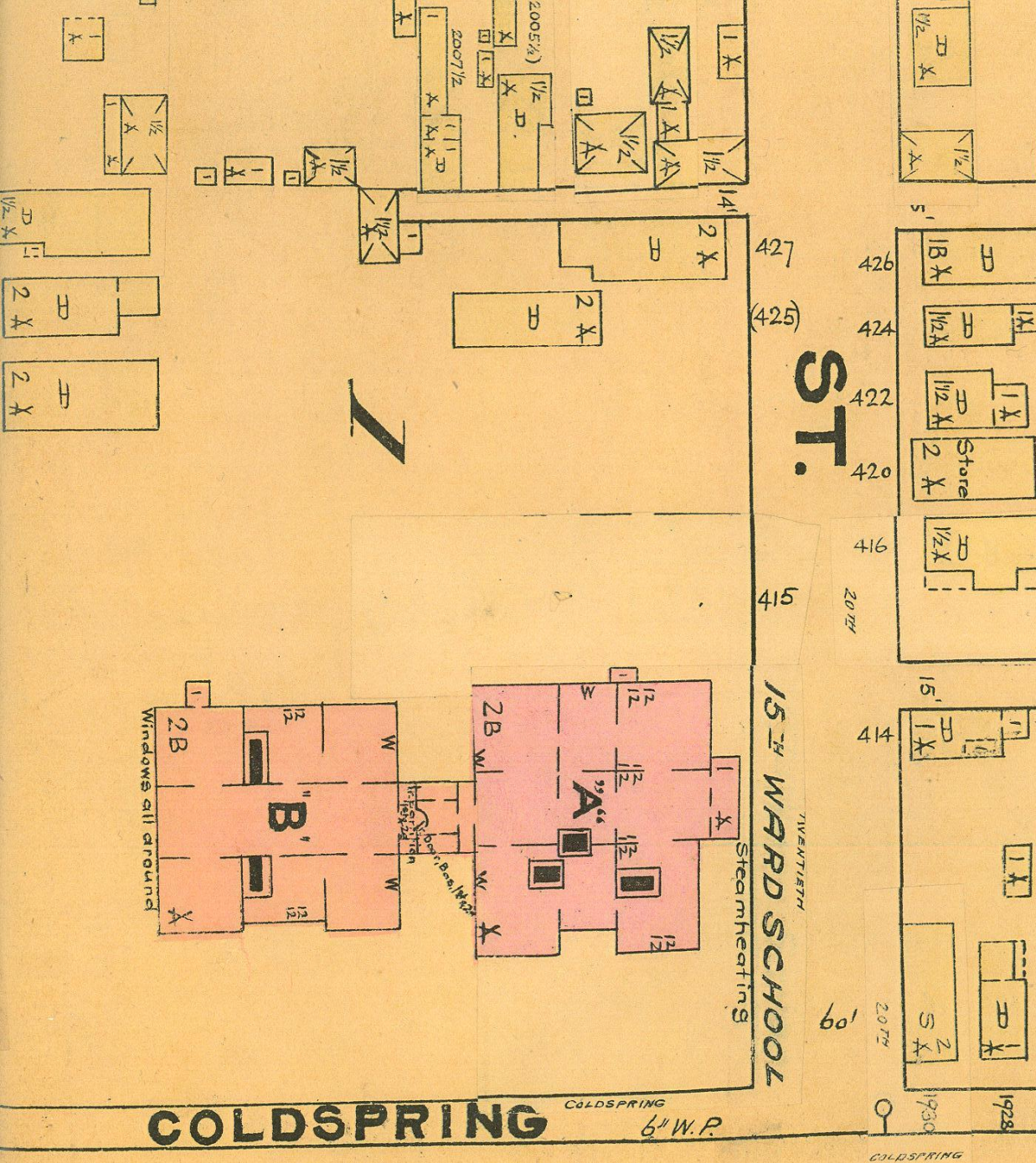


2001 West Vliet Street
and
1255 North 20th Street



Fifteenth District / McKinley School 1925

1888 Rascher Fire Insurance Map









2001 W VLIET

V. E. CARTER
HUMAN RESOURCE CENTER

STOP











2001 W VLIET

V. E. CARTER
HUMAN RESOURCE CENTER

NO
PARKING
ANY
TIME

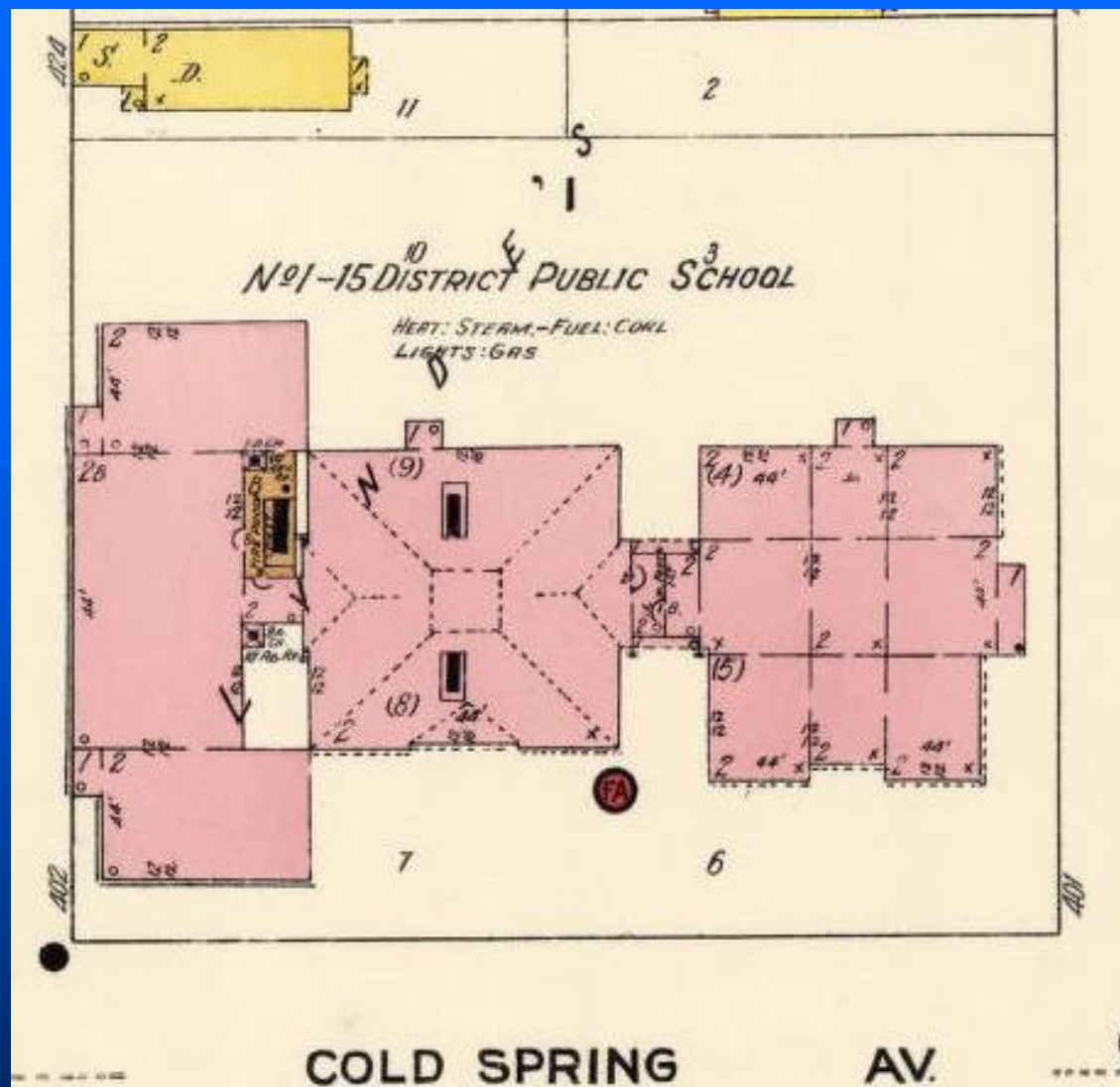
NO
PARKING
ANY
TIME



V. E. CARTER
HUMAN RESOURCE CENTER

NO
PARKING
ANY
TIME

STOP













NO PARKING
DEC 1 - MAR 1
NO PARKING
7AM TO 6PM
MAY 1 - NOV 30
NO PARKING
SCHOOL DAYS
7AM TO 4PM

PEWALK
CLOSED





STREET CLOSED

CEID

















2001 W VLIET

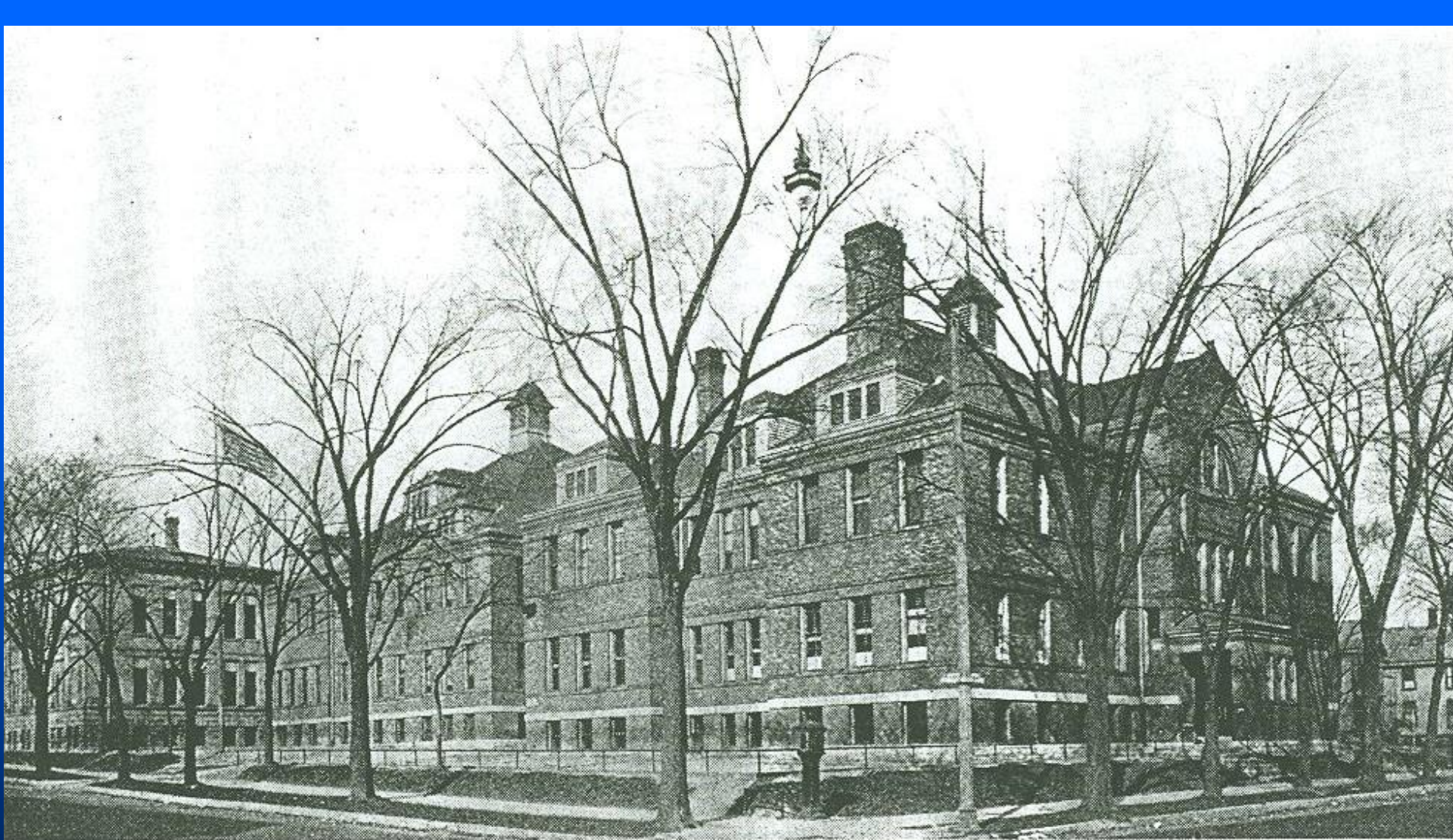
V. E. CARTER
HUMAN RESOURCE CENTER



1984 West Side Survey Photo



1984 West Side Survey Photo



1925 Photo

PUBLIC HEARING
FOR THE LOCAL HISTORIC
DESIGNATION OF THE
PUBLIC PLAYGROUND AT
1255 N. 20TH STREET



 Address: 1255 N 20TH ST

Taxkey: 3641211110

Owner Name: CITY OF MILWAUKEE PLAYGROUND

For detailed definitions of attribute data, please refer to the [Master Property File \(MPROP\) documentation](#), which is available in Word format.

[Add To Selected](#) | [View Additional Details](#)









MOTHBALL CERTIFICATE
FOR
HENRY PALMER MASONIC LODGE
LOVE TABERNACLE





Chimney remains to be
repaired or removed

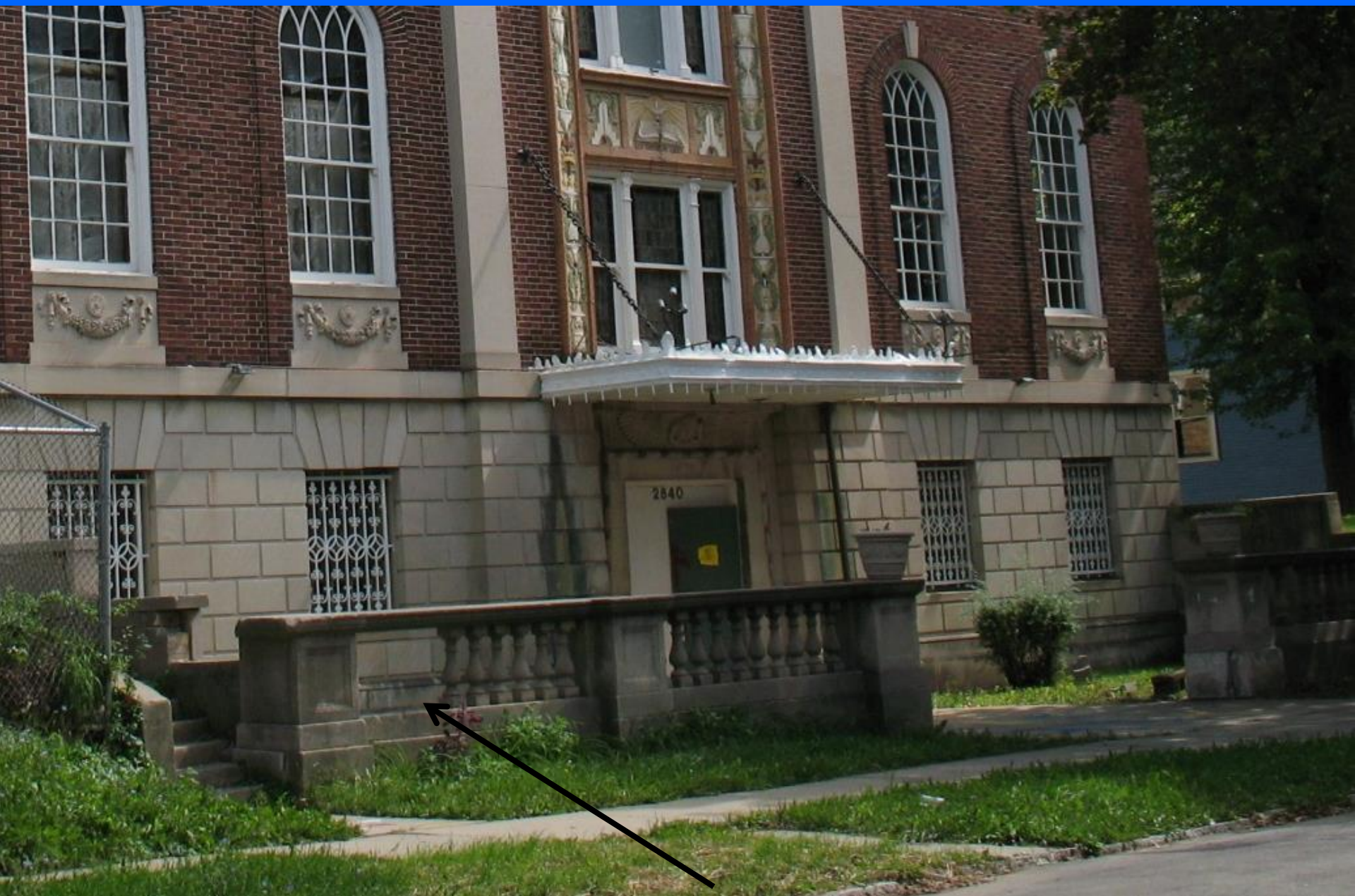
New flat
roofs
installed





Damage to paint
surfaces from fire next
door





PLAQUE PROGRAM