



(1) & (10) Compare design and check for completeness of the cast iron railings. Fabricate missing finials and broken pieces. Sand blast, prime and paint.

(2) South gable peak: Remove replacement roundel ornament and mount on backside of original circular frame. If it does not fit, create a new one that matches those in the west and east gables.

(3) Fabricate 1-inch thick soldered sheet copper roof cresting (hollow/2-sided).

(4) Create 3 bands using the same slate. (See sample slate cuts in left color photo.)
Bottom (3 Courses) - Use fish scale and diagonal cut-corner designs.
Middle - (5 Courses) - Alternate fish scale and diagonal-cut corners.
Top (2 Courses) - Use cut corners only.

(5) Fabricate soldered sheet copper finials for ridge ends and outside corners only. (See aerial view diagram at right.)

(6) Install new monochromatic roof of Vermont unfading green slate to be supplied by Green Stone Company.

(7) See Number 2.

(8) East, west & south gables: Strip to raw wood, prime and paint.

(9) East gable (3rd floor cast iron railing): Reattach 2 crowns (see similar railing on West elevation for precedent), sandblast, prime and paint.

(11) Northern 1/3 of east elevation: Remove all vines from brick wall and kill or remove roots of same.

(12) Northern porch on east elevation: Remove 7 steps and make drawings for new handrails, posts and balusters more appropriately scaled to, and compatible with, the existing original woodwork.

(13) Make drawings for new main entrance porch deck, steps and city sidewalk connection based on historic photographs.

(14) Obtain major carved wood drop finial, which once hung under the main arch of the original porch, from architectural artifact collector, Greg Filardo (Now located in St. Joseph, Missouri.) OR make full size drawings from existing high quality photograph of finial and have a new replica hand carved.

(15) Make accurate drawings for a new main entrance porch superstructure, based on historic photos and surviving scars on masonry.

(16) Design a cast iron cresting for new main porch superstructure. Make castings from existing railing at 3rd floor level under east gable. (See #9)

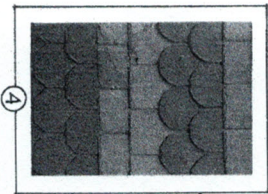
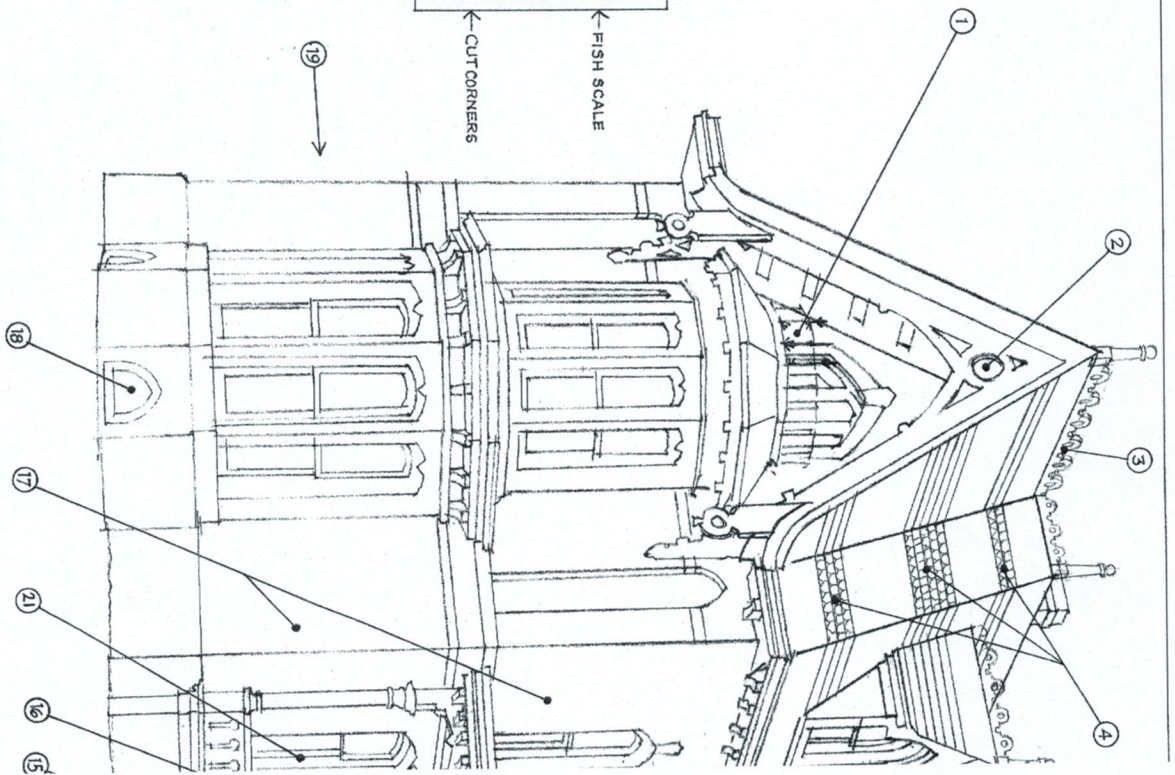
(17) Strip all paint from exterior brick (using Diedrich 606 Paint Remover), chemically clean same (using Diedrich 101 Brick Cleaner) and tuck-point as needed.

(18) Design and fabricate appropriate Victorian Gothic basement window grilles in wrought iron for 2 lancet-arched openings in base of south bay and 3 segmental arched openings for basement windows on east elevation.

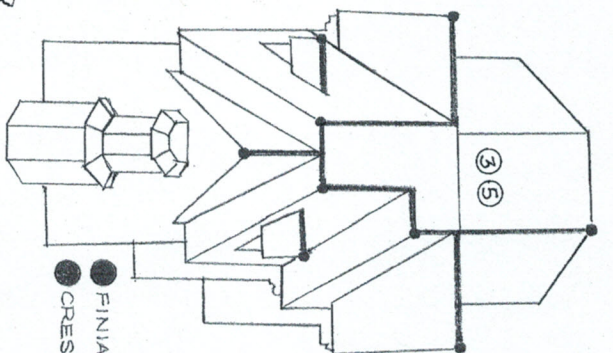
(19) Transom over west entrance door: Design matching pattern based on existing two glass panels in door. Produce in same material and style.

(20) Strip, repair, prime and paint all wooden components of existing porches.

(21) Strip, repair, prime and paint all exterior window brick molds and sash.



FISH SCALE
CUT CORNERS



FINIALS
CRESTING

ZIMMERMANN DESIGN CONSULTANTS
Suite 1111 • Railway Exchange Bldg.
229 E. Wisconsin Ave.
Milwaukee, Wisconsin 53202