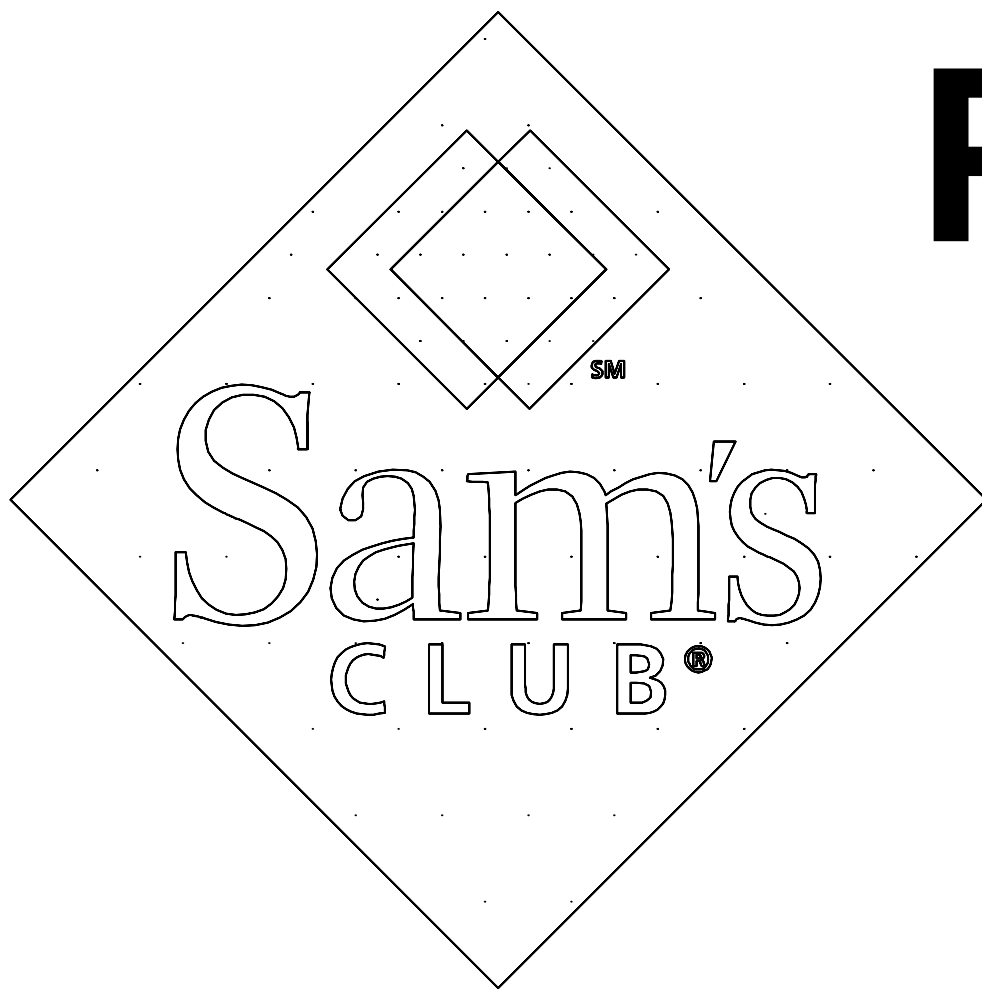


Plotted By:Scrimshaw, Jason Sheet Set:Milwaukee Sam's - 6324 Layout:COVER SHEET July 07, 2014 06:34:41pm K:\TWC_LDEV\WALMART\116199170_Milwaukee_Sams_Hwy145\3 Design\CAD\PlanSheets\6010 - COVER SHEET - 6324.dwg

This document, together with the concepts and designs presented herein, as an instrument of service, is intended only for the specific purpose and client for which it was prepared. Reuse of and improper reliance on this document without written authorization and adaptation by Kimley-Horn and Associates, Inc. shall be without liability to Kimley-Horn and Associates, Inc.



PROPOSED

#6324-08

LOCATED AT

**NORTH EAST CORNER OF N. 124TH STREET AND
WEST BRADLEY ROAD
MILWAUKEE, MILWAUKEE COUNTY, WISCONSIN**

PROJECT TEAM

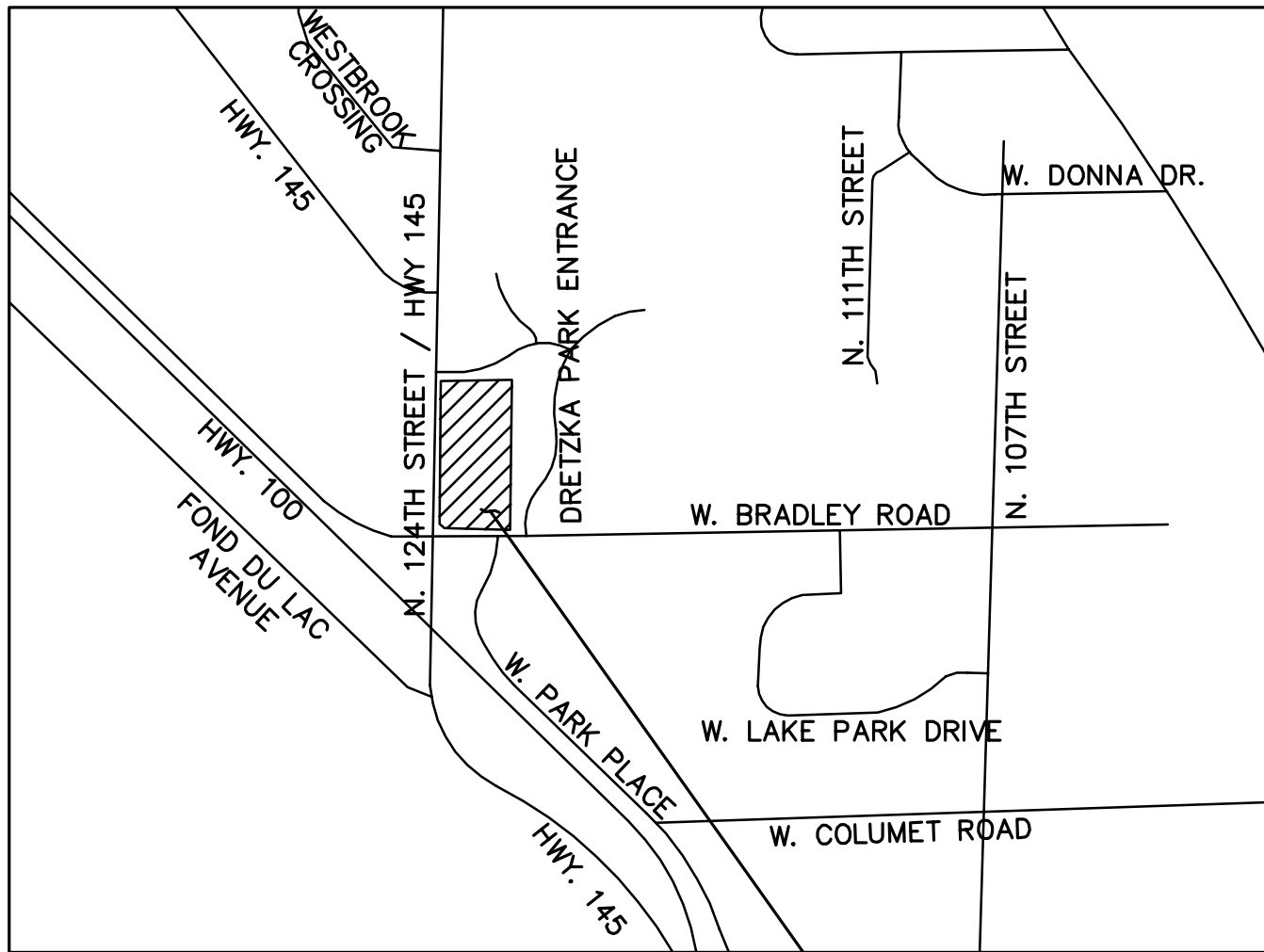
ARCHITECT
ANDREW MOON, AIA
RAYMOND H. HARRIS, AIA
211 N. RECORD STREET, SUITE 222
DALLAS, TX 75202
(214)-749-0626

GEOTECHNICAL ENGINEER
STEVEN MARTIN, P.E.
BRAUN INTERTEC CORPORATION
1826 BUERKLE ROAD
ST. PAUL, MN 55110
(651)-487-3245

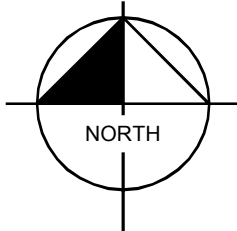
ENVIRONMENTAL
MARK CIAMPONE, P.G.
BRAUN INTERTEC CORPORATION
1826 BUERKLE ROAD
ST. PAUL, MN 55110
(651)-487-3245

LANDSCAPE ARCHITECT
TODD HALUNEN, R.L.A.
KIMLEY-HORN AND ASSOCIATES, INC
2550 UNIVERSITY AVE WEST, SUITE 238N
ST. PAUL, MN 55114
(651)-645-4197

LAND SURVEYOR
JOHN KONOPACKI, R.L.S.
JSD PROFESSIONAL SERVICES, INC.
N22 W22931 NANCY CT., SUITE 3
WAUKESHA, WI 53186
(262) 513-0666



VICINITY
N.T.S.



PROJECT LOCATION

PLAN INDEX	
6010	COVER SHEET
6120	SITE PLAN
6130	GRADING AND DRAINAGE PLAN
6140	UTILITY PLAN
6510	LANDSCAPE PLAN
6511	DETAILED LANDSCAPE PLAN

DEVELOPER-
SAM'S REAL ESTATE BUSINESS TRUST
2001 S.E. 10th STREET, MAIL STOP #5570
BENTONVILLE, ARKANSAS 72716-5570
TELEPHONE (479) 273-4000

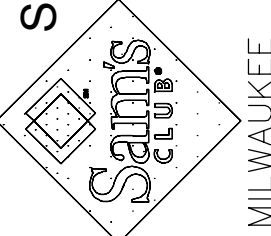
ENGINEER-
Kimley»Horn

PREPARED BY: LUCAS C. PAYNE, P.E.
2550 UNIVERSITY AVE WEST, SUITE 238N
ST. PAUL, MN 55114
TELEPHONE (651) 645-4197

PRELIMINARY - NOT FOR CONSTRUCTION

COVER SHEET

SAM'S CLUB STORE #6324-08
MILWAUKEE, WI
SAM'S REAL ESTATE
BUSINESS TRUST



DATE
07/08/2014
PROJECT NO.
116199170
SHEET NUMBER

6010

FILE NUMBER 140196

Kimley»Horn

2550 UNIVERSITY AVENUE WEST, SUITE 238N, ST. PAUL, MN 55114
WWW.KIMLEY-HORN.COM

DESIGN ENGINEER:
LUCAS C. PAYNE, P.E.

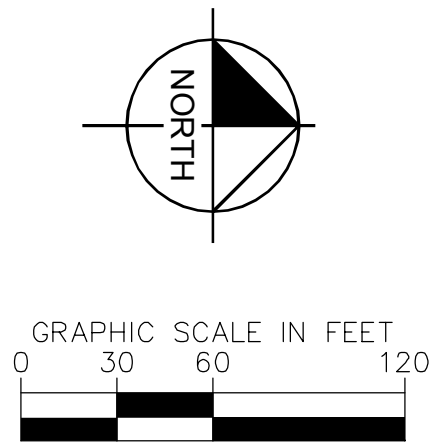
43282-6
DATE: 07/08/2014

This document, together with the concepts and designs presented herein, is intended only for the specific purpose and client for which it was prepared. Reuse of and improper reliance on this document without written authorization and adaptation by Kimley-Horn and Associates, Inc. shall be without liability to Kimley-Horn and Associates, Inc.

ALL CONTRACTORS MUST CONTACT
DIGGERS HOTLINE OF WISCONSIN
WI TOLL FREE 1-800-242-8511
BEFORE CONSTRUCTION BEGINS

ALERT TO CONTRACTOR:

1. THE PRESENCE OF GROUNDWATER SHOULD BE ANTICIPATED ON THIS PROJECT. CONTRACTOR'S BID SHALL INCLUDE CONSIDERATION FOR THIS ISSUE. WHEN PERFORMING GRADING OPERATIONS DURING PERIODS OF WET WEATHER, PROVIDE ADEQUATE DEWATERING, DRAINAGE AND GROUND WATER MANAGEMENT TO CONTROL MOISTURE OF SOILS. REFER TO MASTER SITE SPECIFICATIONS.
2. ALL WM GENERAL CONTRACTOR WORK TO BE COMPLETED (EARTHWORK, FINAL UTILITIES, AND FINAL GRADING) BY THE MILESTONE DATE IN PROJECT DOCUMENTS. OUTLOT AREA TO BE KEPT FREE OF JOB TRAILERS AND STORAGE AFTER THE CONTRACT MILESTONE DATE FOR THE OUTLOT. WM GENERAL CONTRACTOR TO PROVIDE CLEAR ACCESS FOR OUTLOT CONTRACTOR TO THE SPECIFIC PARCEL AT ALL TIMES AFTER MILESTONE DATE. PURCHASER OF OUTLOT TO PROVIDE PERMIT DOCUMENTS AND SWPPP REQUIRED BY STATE/LOCAL REQUIREMENTS FOR SPECIFIC OUTLOT.



LEGEND

	PROPOSED BUILDING		HEAVY DUTY CONCRETE PAVEMENT
	PROPOSED CURB AND GUTTER		ARCHITECTURAL CONCRETE APRON (SEE ARCH. PLANS)
	PROPOSED PARKING SPACES		STANDARD DUTY CONCRETE FOR SIDEWALKS AND ISLAND BUFFER
	ASSOCIATE PARKING SPACES		2' WIDE HEAVY DUTY CONCRETE BUFFER TYP.
	CART CORRAL		2' WIDE BUFFER FOR CAR OVERHANG/STABLE, NON-VEGETATED MATERIAL
	SAM'S CLUB PROPERTY LINE		STORMWATER MANAGEMENT AREA
	MUNICIPAL BOUNDARY LINE		LANDSCAPE BERM
	FIRE LANE STRIPING		
	RETAINING WALL WITH DECORATIVE FENCE		
	GUIDE RAIL		
	SCREENWALL		
	DECORATIVE FENCE		
	STANDARD DUTY PAVEMENT		
	HEAVY DUTY ASPHALT PAVEMENT		

SITE NOTES

1. ALL WORK AND MATERIALS SHALL COMPLY WITH ALL CITY/COUNTY REGULATIONS AND CODES AND O.S.H.A. STANDARDS.
2. CONTRACTOR SHALL REFER TO THE ARCHITECTURAL PLANS FOR EXACT LOCATIONS AND DIMENSIONS OF VESTIBULES, SLOPE PAVING, SIDEWALKS, EXIT PORCHES, TRUCK DOCKS, PRECISE BUILDING DIMENSIONS AND EXACT BUILDING UTILITY ENTRANCE LOCATIONS.
3. ALL DISTURBED AREAS ARE TO RECEIVE FOUR INCHES OF TOPSOIL, SEED, MULCH AND WATER UNTIL A HEALTHY STAND OF GRASS IS ESTABLISHED. SEE 02900 SPECIFICATION.
4. ALL CURBED RADI ARE TO BE 10' UNLESS OTHERWISE NOTED. STRIPED RADII ARE TO BE 5'.
5. ALL DIMENSIONS AND RADII ARE TO THE FACE OF CURB UNLESS OTHERWISE NOTED.
6. EXISTING STRUCTURES WITHIN CONSTRUCTION LIMITS ARE TO BE ABANDONED, REMOVED OR RELOCATED AS NECESSARY. ALL COST SHALL BE INCLUDED IN BASE BID.
7. CONTRACTOR SHALL BE RESPONSIBLE FOR ALL RELOCATIONS, (UNLESS OTHERWISE NOTED ON PLANS) INCLUDING BUT NOT LIMITED TO, ALL UTILITIES, STORM DRAINAGE, SIGNS, TRAFFIC SIGNALS & POLES, ETC. AS REQUIRED. ALL WORK SHALL BE IN ACCORDANCE WITH GOVERNING AUTHORITIES REQUIREMENTS AND PROJECT SITE WORK SPECIFICATIONS AND SHALL BE APPROVED BY SUCH. ALL COST SHALL BE INCLUDED IN BASE BID.
8. SITE BOUNDARY, TOPOGRAPHY, UTILITY AND ROAD INFORMATION TAKEN FROM A SURVEY BY A LAND SURVEYOR.
9. TOTAL LAND AREA IS 19.18 ± ACRES.
10. THE SITE WORK FOR THIS PROJECT SHALL MEET OR EXCEED "THE SITE SPECIFIC SPECIFICATIONS".
11. PYLON SIGNS SHALL BE CONSTRUCTED BY OTHERS.
12. REFER TO ARCH. PLANS FOR SITE LIGHTING ELECTRICAL PLAN.
13. ALL WM GENERAL CONTRACTOR WORK TO BE COMPLETED (EARTHWORK, FINAL UTILITIES, AND FINAL GRADING) BY THE MILESTONE DATE IN PROJECT DOCUMENTS. OUTLOT AREA TO BE KEPT FREE OF JOB TRAILERS AND STORAGE AFTER THE CONTRACT MILESTONE DATE FOR THE OUTLOT. WM GENERAL CONTRACTOR TO PROVIDE CLEAR ACCESS FOR OUTLOT CONTRACTOR TO THE SPECIFIC PARCEL AT ALL TIMES AFTER MILESTONE DATE. PURCHASER OF OUTLOT TO PROVIDE PERMIT DOCUMENTS AND SWPPP REQUIRED BY STATE/LOCAL REQUIREMENTS FOR SPECIFIC OUTLOT.

SITE LEGEND

- (A) 6" WIDE FIRE LANE STRIPING PAINTED TRAFFIC RED W/ "NO PARKING FIRE LANE" PAINTED WITH 4" HIGH WHITE LETTERING AT 29' O.C. SEE DETAIL SHEET.
- (B) AREA STRIPED AT SYSL4" AT 45° @ 2'-0" O.C.
- (C) PEDESTRIAN CROSSWALK WITH 6" WIDE PAINTED WHITE STRIPING PARALLEL TO DIRECTION OF TRAFFIC AT 2'-0" O.C. AND (1)-8" WHITE STRIPE PERPENDICULAR ON BOTH ENDS UNLESS NOTED OTHERWISE. SEE SITE PLAN FOR DIMENSIONS.
- (D) PEDESTRIAN CROSSING SIGN TYPICAL AT PEDESTRIAN CROSSWALKS AS NOTED ON PLANS.
- (E) "YIELD" PAINTED WHITE ON PAVEMENT TYPICAL. SEE DETAIL SHEET.
- (F) CONCRETE JOINTING AND FILLERS TO BE COMPLETED PER DETAIL (TYPICAL OF ALL EXTERIOR CONCRETE EXCLUSIVE OF ARCHITECTURAL CONCRETE).
- (G) EXIT PORCH. SEE ARCHITECTURAL PLANS FOR EXACT SIZE. LOCATION FOR STOOPS, STAIRS AND/OR RAMPS THAT MAY BE REQUIRED. RAMP PAVEMENT FLUSH WITH THE TOP OF STOOP.
- (H) 6" Ø PIPE BOLLARD TYPICAL, UNLESS NOTED OTHERWISE. SEE DETAIL SHEET.
- (I) AT GRADE OVERHEAD DOOR LOCATION. SEE ARCHITECTURAL PLANS FOR EXACT SIZE AND LOCATION FOR COORDINATION WITH CIVIL PLANS.
- (J) 4" WIDE x 130' LONG YELLOW PAINTED TRUCK ALIGNMENT STRIPES TYPICAL.
- (K) 16' X 42' CONCRETE COMPACTOR PAD AND 16' X 35' HEAVY DUTY PAD "LANDING AREA" (ORIENT FOR TRUCK LOADING). REFER TO ARCHITECTURAL PLAN FOR EXACT LOCATION AND SLOPE.
- (L) CONCRETE TRANSFORMER PAD. CONTRACTOR TO COORDINATE WITH LOCAL POWER COMPANY FOR DETAILS.
- (M) ACCESSIBLE PARKING SPACE TYPICAL. SEE DETAIL SHEET FOR ACCESSIBLE PARKING SPACE SIZE, SIGN AND SYMBOL ("VAN" INDICATES VAN ACCESSIBLE SPACE).
- (N) PAINTED ISLAND TYPICAL, UNLESS NOTED OTHERWISE. STRIPES SHALL BE PAINTED SYSL4" AT 2'-0" O.C. PERPENDICULAR TO THE PARKING SPACE. SEE DETAIL SHEET.
- (O) 6'-0" WIDE PEDESTRIAN CROSSWALK. SEE DETAIL SHEET.
- (P) CART CORRAL TYPICAL. SEE DETAIL SHEET FOR CART CORRAL DETAIL. (SAM'S CART CORRAL LOCATIONS ARE FIXED AND MUST BE CONFIRMED WITH SAM'S MANAGEMENT).
- (Q) 10' X 15' STRIPED AREA PAINTED SYSL4" AT 45° @ 2'-0" O.C. AT JIB CRANE LOCATION. SEE ARCH. PLANS.
- (R) 2' BUFFER FOR CAR OVERHANG - REFERENCE LANDSCAPE BUFFER DETAIL. SEE DETAIL SHEET.
- (S) 18" CONCRETE CURB AND GUTTER TYPICAL. SEE "BASE BID - ASPHALT PLAN" AND/OR "ALTERNATE A - CONCRETE PLAN" FOR CURB TYPE. SEE DETAIL SHEET.
- (T) ARROW PAVEMENT MARKINGS TYPICAL. SEE PLAN FOR TYPE. SEE DETAIL SHEET.
- (U) BUILDING SETBACK LINE PER ZONING ORDINANCE.
- (V) "NO PARKING FIRE LANE" SIGN. SEE PLAN FOR LOCATION.
- (W) 2' HD CONCRETE BUFFER FOR LANDSCAPE PROTECTION. SEE DETAIL SHEET.
- (X) TLE STRIPING. SEE DETAIL SHEET.
- (Y) "NO TRUCKS" SIGN. SEE DETAIL SHEET.
- (Z) "TRUCK ROUTE" SIGN. SEE PLAN FOR LOCATION.
- (a) "STOP" SIGN. SEE DETAIL SHEET.
- (b) ADA STALL, LANDSCAPE ISLAND WALKWAY, & CART CROSSOVER. SEE DETAIL SHEET.
- (c) HIGH TRAFFIC AREA END CAP ISLAND. SEE DETAIL SHEET.
- (d) INTERIOR LANDSCAPE ISLAND. SEE DETAIL SHEET.
- (e) STOP BAR. SEE DETAIL SHEET.
- (f) 6"x6" PAINTED STRIPED AREA CENTERED ON SIPHONIC BREAK STORM MANHOLE. 4" PAINTED SOLID TRAFFIC YELLOW STRIPES 18" O.C. @ 45°. SEE DETAIL SHEET.
- (g) ISOLATION JOINT TYPICAL AT FIXED STRUCTURES (BUILDINGS, RETAINING WALLS/DOCK WALLS, DROP INLETS, MANHOLES, LIGHT POLE BASES AND BOLLARDS). SEE DETAIL SHEET.
- (h) ADA STALL, LANDSCAPE ISLAND, & CART CROSSOVER. SEE DETAIL SHEET.
- (i) ACCESSIBLE "SITE ARRIVAL POINT". SEE PLAN FOR LOCATION AND LIMITS.
- (j) 6' LONG STRIPE WITH 18" GAPS - TYPICAL.
- (k) OPTIONAL MOVEMENT LANE CONTROL SIGN. SEE DIRECTION INDICATED AT SYMBOL. SEE DETAIL SHEET.
- (n) ADVANCED INTERSECTION LANE CONTROL SIGN. SEE DIRECTION INDICATED AT SYMBOL. SEE DETAIL SHEET.
- (o) "DELIVERY TRAFFIC ONLY" SIGN. SEE DETAIL SHEET.
- (p) DECORATIVE FENCE
- (q) PEDESTRIAN LEVEL LIGHT

Luminaire Schedule									
Symbol	Qty	Label	Arrangement	Description	LLF	Arr. Watts	Arr. Lum. Lumens	BUG Rating	
	3	D1-5M-14-42-1958	BACK-BACK	2-ARE-EDG-5M-DA-14-D-UH-BK-525-57K 39ft pole on 3ft base	0.810	466	38664	B4-U0-G3	
	11	S-2M-08-42-1860	SINGLE	1-ARE-EDG-2M-DA-08-D-UH-BK-525-57K 39ft pole on 3ft base	0.810	133	10575	B2-U0-G2	
	12	S-3M-14-42-1950	SINGLE	1-ARE-EDG-3M-DA-14-D-UH-BK-525-57K 39ft pole on 3ft base	0.810	233	17422	B3-U0-G3	
	6	T1-5M-14-42-1958	3 @ 90 DEGREES	3-ARE-EDG-5M-DA-14-D-UH-BK-525-57K 39ft pole on 3ft base	0.810	699	57996	B4-U0-G3	
	3	T1-5S-14-42-1980	3 @ 90 DEGREES	3-ARE-EDG-5S-DA-14-D-UH-BK-525-57K 39ft pole on 3ft base	0.810	699	64437	B4-U0-G2	
	20	S-3M-08-20-PED	SINGLE	1-ARE-EDR-3M-R4-08-E-UH-525-40K 20ft pole	0.810	133	11218	B3-U0-G3	

SITE ANALYSIS TABLE

SAM'S CLUB	135,016 S.F.
PARKING (ASSOCIATES AND CUSTOMER)	821 SPACES
ACCESSIBLE	19 SPACES
TOTAL PARKING	840 SPACES
RATIO	4,001/1,000 S.F.
CART CORRAL	10 CORRALS / 20 SPACES
BIKE RACKS	70 SPACES

*PARKING SPACES OBSTRUCTED BY CART CORRALS ARE NOT INCLUDED IN OVERALL PARKING RATIO.

PAINT STRIPING LEGEND

- SWSL4" - SINGLE WHITE SOLID LINE / 4" WIDE
SYSL4" - SINGLE YELLOW SOLID LINE / 4" WIDE
DYSL4" - DOUBLE YELLOW SOLID LINE / 4" WIDE EACH
SYSL10" - SINGLE YELLOW SOLID LINE / 10" WIDE
SWDL4" - SINGLE WHITE DASHED LINE / 4" WIDE
SBYL4" - SINGLE BROKEN YELLOW LINE / 4" WIDE
WSL24" - SINGLE WHITE SOLID LINE / 24" WIDE

PRELIMINARY - NOT FOR CONSTRUCTION

Kimley»Horn

2550 UNIVERSITY AVENUE, WEST, SUITE 238N, ST. PAUL, MN 55114
WWW.KIMLEY-HORN.COM

DESIGN ENGINEER:

LUCAS C. PAYNE, P.E.

W LICENSE NUMBER:

43282-6

DATE: 07/08/2014

SCALE:

AS NOTED

DESIGNED BY

JDS

DRAWN BY

JDS

CHECKED BY

LCP

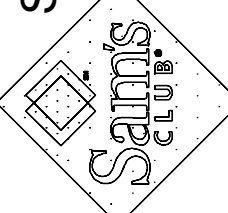
SITE PLAN

SAM'S CLUB STORE #6324-08

MILWAUKEE, WI

SAM'S REAL ESTATE

BUSINESS TRUST



MILWAUKEE

DATE

07/08/2014

PROJECT NO.

116199170

SHEET NUMBER

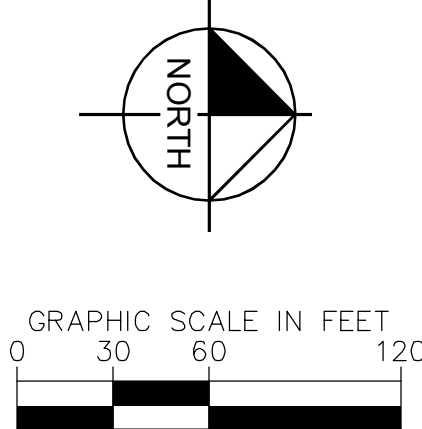
6120

FILE NUMBER 140196

This document, together with the concepts and designs presented herein, is intended only for the specific purpose and client for which it was prepared. Reuse of and imposter reliance on this document without written authorization and adaptation by Kimley-Horn and Associates, Inc. shall be without liability to Kimley-Horn and Associates, Inc.

DRAINAGE SCHEDULE									
STRUCTURE NO.	STRUCTURE TYPE	RM/GRATE ELEVATION	INVERT ELEVATION	PIPE SIZE IN	PIPE SLOPE	INVERT ELEVATION	PIPE SIZE OUT	PIPE SLOPE	PIPE SIZE OUT
SD1	MH R-1775	159.43	N 158.20	24"	1.00%				
SD2	OCS R-4976-4A	169.00	W 165.00	12"	1.46%	S 159.92	24"	1.00%	
SD3	OCS R-4976-4A	183.06	W 182.83	4"	1.00%	E 167.00	12"	1.46%	
SD4	12" FES	188.86	NE 187.17	18"	1.00%				
SD5	OCS R-4976-4A	206.60	N 183.48	18"	1.00%	SW 168.00	18"	1.00%	
SD6	18" FES	185.60	N 183.48	18"	1.00%				
SD7	OCS R-4976-4A	206.00	W 188.12	24"	1.00%	S 185.12	18"	1.00%	
SD8	OCS R-4976-4A	209.60	N 190.23	24"	1.00%	E 201.95	18"	1.00%	
SD9	MH R-1775	213.73	N 193.36	24"	1.00%	S 190.23	24"	1.00%	
SD10	MH R-1775	214.48	N 193.36	24"	1.00%	S 193.36	24"	1.00%	
SD11	OCS R-4976-4A	201.00	N 194.60	24"	1.00%				
SD12	12" FES	207.67	NW 206.50	12"	1.66%				
SD13	MH R-1775	211.07	NW 207.92	12"	1.66%	SE 207.92	12"	1.66%	
SD14	MH R-1775	214.57	S 209.06	12"	1.00%	SE 209.06	12"	1.00%	
SD15	12" FES	208.17	N 208.00	12"	11.56%				
SD16	12" FES	211.17	N 210.00	12"	9.02%	S 211.30	12"	9.02%	
SD17	12" FES	211.17	N 210.00	12"	9.02%				
SD18	12" FES	212.47	N 209.60	12"	15.30%	S 212.00	12"	15.30%	
SD19	12" FES	210.77	N 212.00	12"	11.12%	S 213.60	12"	11.12%	
SD20	12" FES	213.17	SE 206.26	24"	1.00%	NW 208.07	24"	1.00%	
SD21	12" FES	213.17	W 210.28	24"	1.00%	N 210.28	24"	1.00%	
SD22	12" FES	214.77	W 204.33	24"	1.00%	E 205.59	24"	1.00%	
SD23	24" FES	206.51	W 205.59	24"	1.00%	E 205.59	24"	1.00%	
SD24	MH R-1775	214.24	S 210.27	24"	1.00%	N 210.50	24"	1.00%	
SD25	MH R-1775	214.81	S 206.42	24"	1.00%	E 206.42	24"	1.00%	
SD26	MH R-2750	215.13							
SD27	24" FES	206.58							
SD28	MH R-1775	214.95							
SD29	MH R-2750	215.10							
SD30	MH R-1775	214.13							

DRAINAGE SCHEDULE									
STRUCTURE NO.	STRUCTURE TYPE	RM/GRATE ELEVATION	INVERT ELEVATION	PIPE SIZE IN	PIPE SLOPE	INVERT ELEVATION	PIPE SIZE OUT	PIPE SLOPE	PIPE SIZE OUT
SD31	MH R-1775	214.82	S 207.19	24"	1.00%	N 207.19	24"	1.00%	
SD32	MH R-2750	214.86	E 208.72	21"	1.00%	W 210.50	21"	1.00%	
SD33	MH R-1775	215.08	S 208.21	24"	1.00%	N 208.21	24"	1.00%	
SD34	TRUCK DRAIN	211.88	E 210.61	12"	1.00%	W 210.71	12"	1.00%	
SD35	MH R-1775	214.57	SE 209.39	21"	1.00%	N 209.14	12"	1.00%	
SD36	MH R-2750	215.44	SE 209.39	21"	1.00%	NW 210.50	21"	1.00%	
SD37	18" FES	208.75	SW 206.96	18"	1.00%				
SD38	CBMH R-3067A	214.09	S 208.27	12"	1.00%	NE 207.77	18"	1.00%	
SD39	CBMH R-3067A	214.42	S 208.27	12"	1.00%	N 211.12	12"	1.00%	
SD40	12" FES	202.71	W 201.00	18"	2.64%				
SD41	12" FES	203.71	W 202.00	12"	4.83%	E 202.00	18"	2.64%	
SD42	12" FES	203.17	W 202.00	12"	4.83%				
SD43	12" FES	205.17	W 206.00	12"	5.04%	E 204.00	12"	4.83%	
SD44	12" FES	207.17	W 206.00	12"	5.04%				
SD45	12" FES	208.17	W 170.00	18"	1.00%	E 207.00	12"	5.04%	
SD46	FES	171.71	W 170.00	18"	1.00%				
SD47	CBMH R-3067A	175.71	N 170.30	12"	4.18%	E 170.30	18"	1.00%	
SD48	CBMH R-3067A	176.35	W 179.03	12"	5.00%	E 170.52	12"	1.00%	
SD49	CBMH R-3067A	187.01	N 179.03	12"	1.00%	S 179.03	12"	4.18%	
SD50	CBMH R-3067A	187.77	W 179.03	12"	1.00%	E 179.27	12"	1.09%	
SD51	CBMH R-3067A	196.36	W 188.51	12"	1.09%	S 188.51	12"	5.00%	
SD52	CBMH R-3067A	197.44	N 190.52	12"	1.00%	E 188.75	12"	1.09%	
SD53	CBMH R-3067A	206.42	S 188.52	12"	1.00%	W 190.74	12"	1.00%	
SD54	CBMH R-3067A	207.64	E 190.52	12"	1.00%				

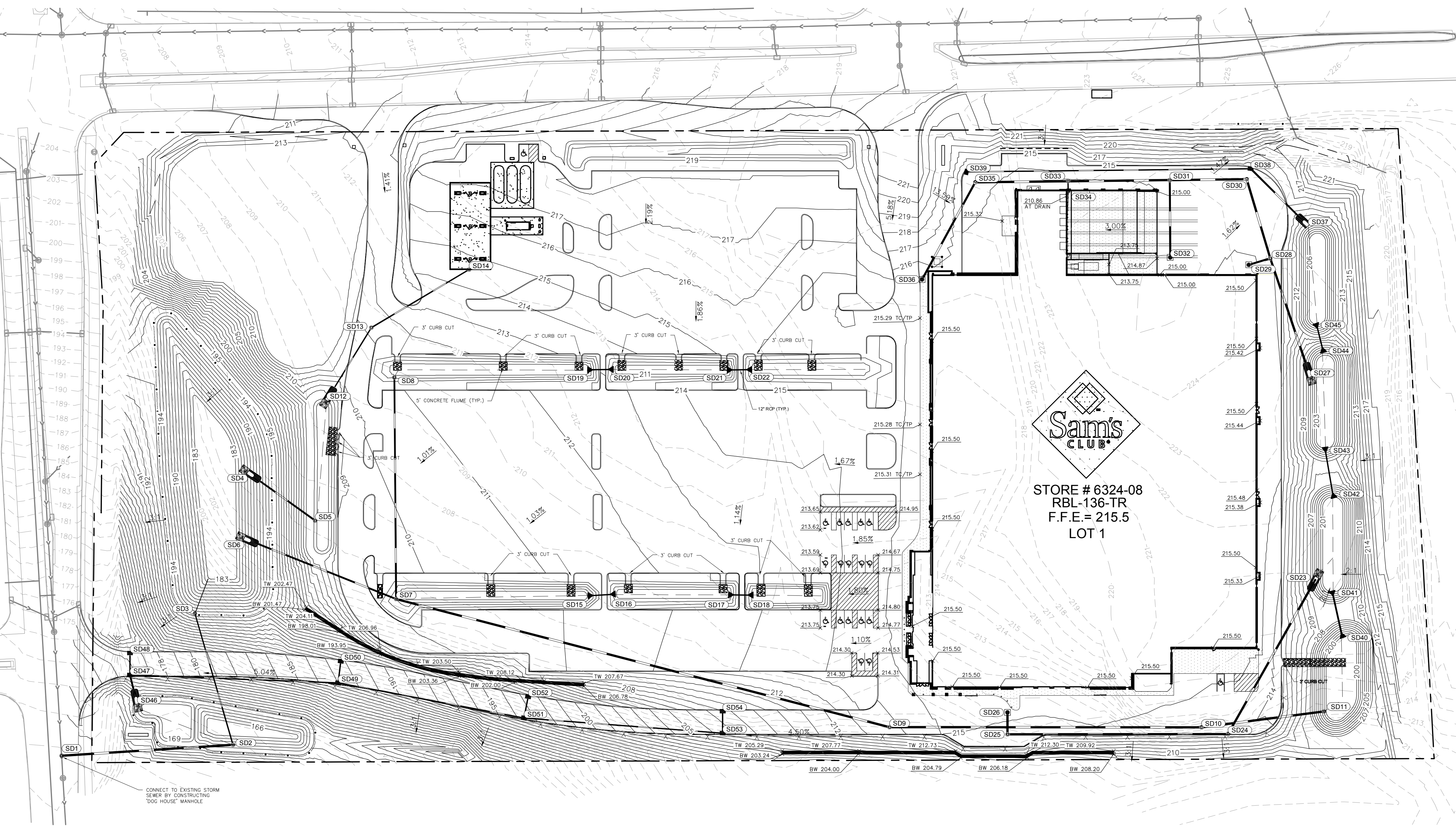


GRADING NOTES

- CONTRACTOR IS RESPONSIBLE FOR DEMOLITION OF EXISTING STRUCTURES INCLUDING REMOVAL OF ANY EXISTING UTILITIES SERVING THE STRUCTURE. UTILITIES ARE TO BE REMOVED TO THE RIGHT-OF-WAY.
- THE CONTRACTOR IS SPECIFICALLY CAUTIONED THAT THE LOCATION AND/OR ELEVATION OF EXISTING UTILITIES AS SHOWN ON THESE PLANS IS BASED ON RECORDS OF THE VARIOUS UTILITY COMPANIES, AND WHERE POSSIBLE, MEASUREMENTS TAKEN IN THE FIELD. THE INFORMATION IS NOT TO BE RELIED ON AS BEING EXACT OR COMPLETE. THE CONTRACTOR MUST CALL THE APPROPRIATE UTILITY COMPANIES AT LEAST 72 HOURS BEFORE ANY EXCAVATION TO REQUEST EXACT FIELD LOCATION OF UTILITIES. IT SHALL BE THE RESPONSIBILITY OF THE CONTRACTOR TO RELOCATE ALL EXISTING UTILITIES WHICH CONFLICT WITH THE PROPOSED IMPROVEMENTS SHOWN ON THE PLANS.
- ALL CUT OR FILL SLOPES SHALL BE 3:1 OR FLATTER UNLESS OTHERWISE NOTED.
- PRECAST STRUCTURES MAY BE USED AT CONTRACTORS OPTION.
- STORM PIPE SHALL BE AS FOLLOWS UNLESS OTHERWISE NOTED: (SEE MASTER SITE SPECIFICATIONS SECTION 02530 FOR ALLOWED MATERIALS).
- EXISTING PIPES TO BE CLEANED OUT TO REMOVE ALL SILT AND DEBRIS.
- EXISTING GRADE CONTOUR INTERVALS SHOWN AT 1 FOOT.
- PROPOSED GRADE CONTOUR INTERVALS SHOWN AT 1 FOOT INTERVALS.
- IF ANY EXISTING STRUCTURES TO REMAIN ARE DAMAGED DURING CONSTRUCTION IT SHALL BE THE CONTRACTORS RESPONSIBILITY TO REPAIR AND/OR REPLACE THE EXISTING STRUCTURE AS NECESSARY TO RETURN IT TO EXISTING CONDITIONS OR BETTER.
- ALL STORM PIPE ENTERING STRUCTURES SHALL BE GROUTED TO ASSURE CONNECTION AT STRUCTURE IS WATERTIGHT.
- ALL STORM SEWER MANHOLES IN PAVED AREAS SHALL BE FLUSH WITH PAVEMENT, AND SHALL HAVE TRAFFIC BEARING RING & COVERS. MANHOLES IN UNPAVED AREAS SHALL BE 6" ABOVE FINISH GRADE. LIDS SHALL BE LABELED "STORM SEWER".
- THE CONTRACTOR SHALL ADHERE TO ALL TERMS & CONDITIONS AS OUTLINED IN THE EPA OR APPLICABLE STATE GENERAL N.P.D.E.S. PERMIT FOR STORM WATER DISCHARGE ASSOCIATED WITH CONSTRUCTION ACTIVITIES AND THE WALMART SPECIAL CONDITIONS, SECTION 8, ENVIRONMENTAL COMPLIANCE AND STORM WATER POLLUTION PREVENTION. THIS APPLIES TO WALMART BUILT PROJECTS ONLY.
- CONTRACTOR SHALL ADJUST AND/OR CUT EXISTING PAVEMENT AS NECESSARY TO ASSURE A SMOOTH FIT AND CONTINUOUS GRADE.
- CONTRACTOR SHALL ASSURE POSITIVE DRAINAGE AWAY FROM BUILDINGS FOR ALL NATURAL AND PAVED AREAS.
- TOPOGRAPHIC INFORMATION IS TAKEN FROM A TOPOGRAPHIC SURVEY BY LAND SURVEYORS. IF THE CONTRACTOR DOES NOT ACCEPT EXISTING TOPOGRAPHY AS SHOWN ON THE PLANS, WITHOUT EXCEPTION, THEN THE CONTRACTOR SHALL SUPPLY, AT THEIR EXPENSE, A TOPOGRAPHIC SURVEY BY A REGISTERED LAND SURVEYOR TO THE OWNER FOR REVIEW.
- ALL UNSURFACED AREAS DISTURBED BY GRADING OPERATION SHALL RECEIVE 4 INCHES OF TOPSOIL. CONTRACTOR SHALL APPLY STABILIZATION FABRIC TO ALL SLOPES 3H:1V OR STEEPER. CONTRACTOR SHALL STABILIZE DISTURBED AREAS IN ACCORDANCE WITH GOVERNING SPECIFICATIONS UNTIL A HEALTHY STAND OF VEGETATION IS OBTAINED.
- CONSTRUCTION SHALL COMPLY WITH ALL APPLICABLE GOVERNING CODES AND BE CONSTRUCTED TO SAME.
- ALL STORM STRUCTURES SHALL HAVE A SMOOTH UNIFORM POURED MORTAR INVERT FROM INVERT IN TO INVERT OUT.
- VERTICAL DATUM: CITY OF MILWAUKEE (MINUS 580.603 TO CONVERT FROM NAVD 29)

LEGEND

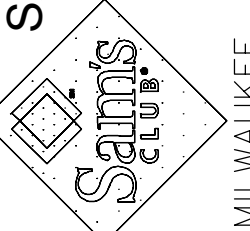
- PROPERTY LINE
- EXISTING CONTOUR
- PROPOSED CONTOUR
- PROPOSED STORM SEWER PIPE
- EXISTING STORM SEWER PIPE
- D PROPOSED MANHOLE
- PROPOSED CURB/AREA INLET
- PROPOSED RIP RAP
- XXXXXX PROPOSED SPOT GRADE
- X.XX% PROPOSED SLOPE
- (SD-X) PROPOSED STORM SEWER STRUCTURE LABEL
- E.O.F. EMERGENCY OVERFLOW ELEVATION
- FFE FINISHED FLOOR ELEVATION
- TC TOP OF CURB
- FL CURB FLOW LINE



PRELIMINARY - NOT FOR CONSTRUCTION

GRADING AND DRAINAGE PLAN

SAM'S CLUB STORE #6324-08
MILWAUKEE, WI
SAM'S REAL ESTATE
BUSINESS TRUST



DATE
07/08/2014
PROJECT NO.
116199170
SHEET NUMBER

6130

FILE NUMBER 140196

Kimley»Horn

2550 UNIVERSITY AVENUE, WEST SUITE 238N, ST. PAUL, MN 55114
WWW.KIMLEY-HORN.COM

DESIGN ENGINEER:

LUCAS C. PAYNE, P.E.

WI LICENSE NUMBER
43282-6
DATE: 07/08/2014

SCALE

AS NOTED

DESIGNED BY
JDS

DRAWN BY
JDS

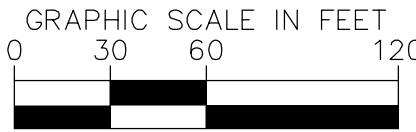
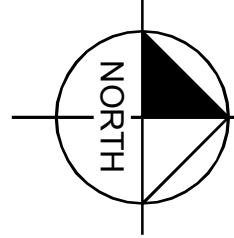
CHECKED BY
LCP

This document, together with the concepts and designs presented herein, as an instrument of service, is intended only for the specific purpose and client for which it was prepared. Reuse of and improper reliance on this document without written authorization and adaptation by Kimley-Horn and Associates, Inc. shall be without liability to Kimley-Horn and Associates, Inc.

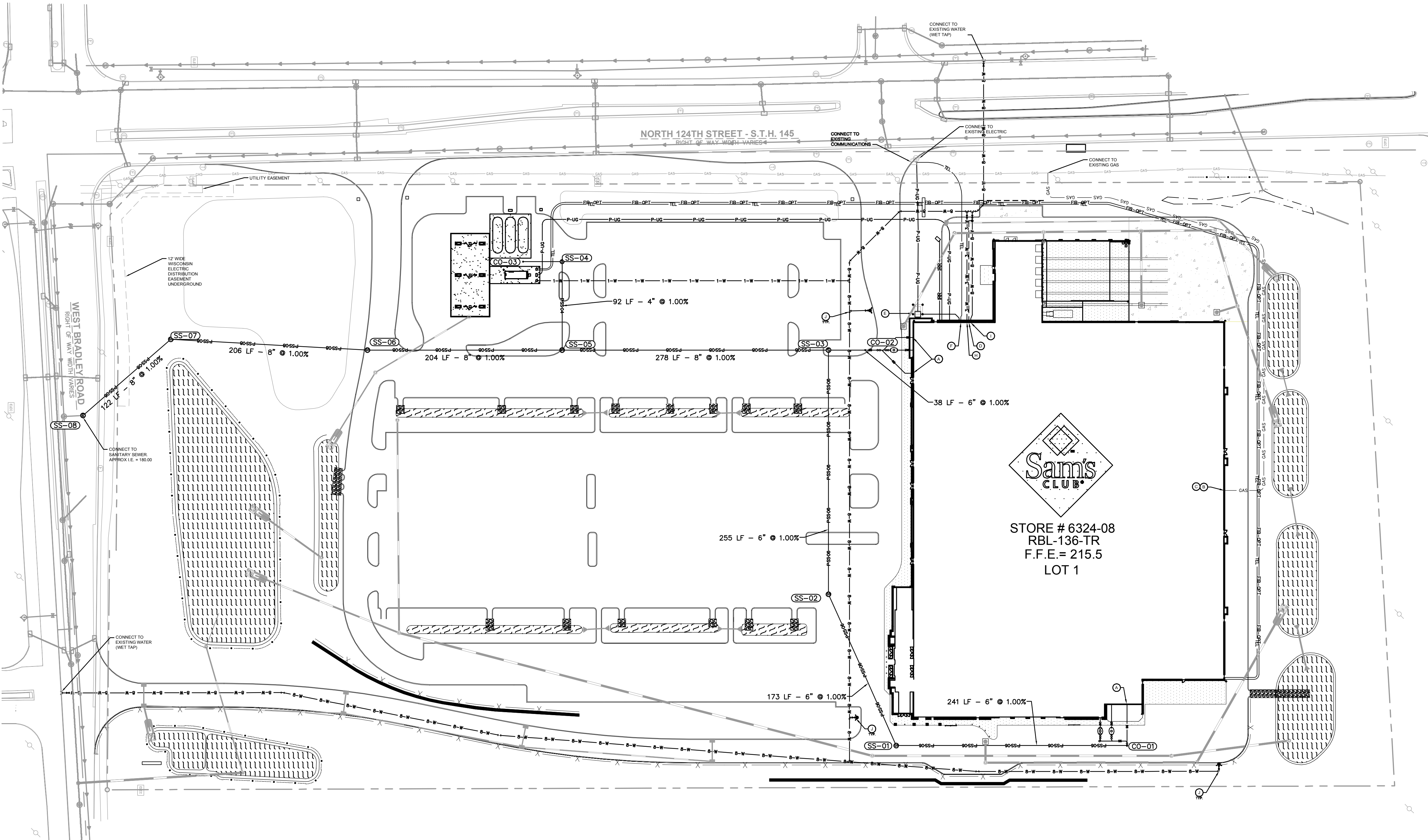
ALL CONTRACTORS MUST CONTACT
DIGGERS HOTLINE OF WISCONSIN
WI TOLL FREE 1-800-242-8511
BEFORE CONSTRUCTION BEGINS

ALERT TO CONTRACTOR:

- THE PRESENCE OF GROUNDWATER SHOULD BE ANTICIPATED ON THIS PROJECT. CONTRACTOR'S BID SHALL INCLUDE CONSIDERATION FOR THIS ISSUE. WHEN PERFORMING GRADING OPERATIONS DURING PERIODS OF WET WEATHER, PROVIDE ADEQUATE DEWATERING, DRAINAGE AND GROUND WATER MANAGEMENT TO CONTROL MOISTURE OF SOILS. REFER TO MASTER SITE SPECIFICATIONS.
- ALL WM GENERAL CONTRACTOR WORK TO BE COMPLETED (EARTHWORK, FINAL UTILITIES, AND FINAL GRADING) BY THE MILESTONE DATE IN PROJECT DOCUMENTS. OUTLOT AREA TO BE KEPT FREE OF JOB TRAILERS AND STORAGE AFTER THE CONTRACT MILESTONE DATE FOR THE OUTLOT. WM GENERAL CONTRACTOR TO PROVIDE CLEAR ACCESS FOR OUTLOT CONTRACTOR TO THE SPECIFIC PARCEL AT ALL TIMES AFTER MILESTONE DATE. PURCHASER OF OUTLOT TO PROVIDE PERMIT DOCUMENTS AND SWPPP REQUIRED BY STATE/LOCAL REQUIREMENTS FOR SPECIFIC OUTLOT.



SANITARY SEWER STRUCTURE SCHEDULE				
STRUCTURE NO.	STRUCTURE TYPE	RIM/GRATE ELEVATION	INVERT ELEVATION IN	INVERT ELEVATION OUT
CO-01	CLEAN OUT	214.89		S 209.50
CO-02	CLEAN OUT	215.24		S 208.50
CO-03	CLEAN OUT	216.79		N 210.00
SS-01	MH	214.54	N 207.09	SW 206.99
SS-02	MH	214.03	NE 205.25	W 205.15
SS-03	MH	214.52	N 208.12 E 202.60	S 202.50
SS-04	MH	217.21	S 209.59	E 209.49
SS-05	MH	214.54	N 199.71 W 208.57	S 199.61
SS-06	MH	211.27	N 197.58	S 190.00
SS-07	MH	202.44	N 187.93	SE 181.22
SS-08	MH	191.26	NW 180.00	S 179.90



UTILITY NOTES

- ALL FILL MATERIAL IS TO BE IN PLACE, AND COMPACTED BEFORE INSTALLATION OF PROPOSED UTILITIES.
- CONTRACTOR SHALL NOTIFY THE UTILITY AUTHORITIES INSPECTORS 72 HOURS BEFORE CONNECTING TO ANY EXISTING LINE.
- SANITARY SEWER PIPE SHALL BE AS FOLLOWS:
8" PVC SDR35 PER ASTM D 3034, FOR PIPES LESS THAN 12' DEEP
8" PVC SDR26 PER ASTM D 3034, FOR PIPES MORE THAN 12' DEEP
6" PVC SCHEDULE 40
DUCTILE IRON PIPE PER AWWA C150
- WATER LINES SHALL BE AS FOLLOWS:
6" AND LARGER, PVC C-90 PER ASTM D 2241
CLASS 200 UNDER COUNTY ROADS, OTHERWISE CLASS 150
6" AND LARGER DUCTILE IRON PIPE PER AWWA C150
SMALLER THAN 6" EITHER COPPER TUBE TYPE 1" (SOFT) PER ANSI B16.22 OR PVC, 200 P.S.I., PER ASTM D1784 AND D2241.
- MINIMUM TRENCH WIDTH SHALL BE 2 FEET.
- ALL WATER JOINTS ARE TO BE MECHANICAL JOINTS WITH THRUST BLOCKING AS CALLED OUT IN SPECIFICATIONS.
- ALL UTILITIES SHOULD BE KEPT TEN (10') APART (PARALLEL) OR WHEN CROSSING 18" VERTICAL CLEARANCE (OUTSIDE EDGE OF PIPE TO OUTSIDE EDGE OF PIPE).
- CONTRACTOR SHALL MAINTAIN A MINIMUM OF 6" COVER ON ALL WATERLINES.
- IN THE EVENT OF A VERTICAL CONFLICT BETWEEN WATER LINES, SANITARY LINES, STORM LINES AND GAS LINES (EXISTING AND PROPOSED), THE SANITARY LINE SHALL BE DUCTILE IRON PIPE WITH MECHANICAL JOINTS AT LEAST 10 FEET ON BOTH SIDES OF CROSSING. THE WATER LINE SHALL HAVE MECHANICAL JOINTS WITH APPROPRIATE THRUST BLOCKING AS REQUIRED TO PROVIDE A MINIMUM OF 18" CLEARANCE. MEETING REQUIREMENTS OF ANSI A21.10 OR ANSI 21.11 (AWWA C-151) (CLASS 50).
- LINES UNDERGROUND SHALL BE INSTALLED, INSPECTED AND APPROVED BEFORE BACKFILLING.
- TOPS OF EXISTING MANHOLES SHALL BE RAISED AS NECESSARY TO BE FLUSH WITH PROPOSED PAVEMENT ELEVATIONS, AND TO BE ONE FOOT ABOVE FINISHED GROUND ELEVATIONS IN NON PAVEMENT AREAS WITH WATER TIGHT LIDS.
- ALL CONCRETE FOR ENCASEMENTS SHALL HAVE A MINIMUM 28 DAY COMPRESSION STRENGTH AT 3000 P.S.I.
- EXISTING UTILITIES SHALL BE VERIFIED IN FIELD PRIOR TO INSTALLATION OF ANY NEW LINES.
- REFER TO INTERIOR PLUMBING DRAWINGS FOR TIE-IN OF ALL UTILITIES.
- CONTRACTOR IS RESPONSIBLE FOR COMPLYING TO THE SPECIFICATIONS OF THE LOCAL AUTHORITIES (ANY CITY) WITH REGARDS TO MATERIALS AND INSTALLATION OF THE WATER AND SEWER LINES.
- THE CONTRACTOR IS SPECIFICALLY CAUTIONED THAT THE LOCATION AND/OR ELEVATION OF EXISTING UTILITIES AS SHOWN ON THESE PLANS IS BASED ON RECORDS OF THE VARIOUS UTILITY COMPANIES, AND WHERE POSSIBLE, MEASUREMENTS TAKEN IN THE FIELD. THE INFORMATION IS NOT TO BE RELIED ON AS BEING EXACT OR COMPLETE. THE CONTRACTOR MUST CALL THE APPROPRIATE UTILITY COMPANIES AT LEAST 72 HOURS BEFORE ANY EXCAVATION TO REQUEST EXACT FIELD LOCATION OF UTILITIES. IT SHALL BE THE RESPONSIBILITY OF THE CONTRACTOR TO RELOCATE ALL EXISTING UTILITIES WHICH CONFLICT WITH THE PROPOSED IMPROVEMENTS SHOWN ON THE PLANS.
- CONTRACTOR IS RESPONSIBLE FOR ALL NECESSARY INSPECTIONS AND/OR CERTIFICATIONS REQUIRED BY CODES AND/OR UTILITY SERVICE COMPANIES. THIS AND THE FINAL CONNECTIONS OF THE SERVICE SHALL BE COMPLETED 30 DAYS PRIOR TO STORE POSSESSION.
- CONTRACTOR SHALL COORDINATE WITH ALL UTILITY COMPANIES FOR INSTALLATION REQUIREMENTS AND SPECIFICATIONS.
- REFER TO BUILDING PLANS FOR SITE LIGHTING ELECTRICAL PLAN.

UTILITY LEGEND

- 6" SANITARY SEWER LATERAL AT MINIMUM 1.0% SLOPE. COORDINATE WITH ARCHITECTURAL PLANS.
- GAS ENTRY WITH GAS METER. CONTRACTOR RESPONSIBLE FOR INSTALLING PIPE BOLLARD PROTECTION AT METER. CONTRACTOR SHALL COORDINATE WITH GAS COMPANY FOR TYING OF INDIVIDUAL METER.
- CONTRACTOR IS RESPONSIBLE FOR COORDINATION WITH GAS COMPANY REGARDING THE SIZE AND INSTALLATION OF GAS SERVICE LINE.
- 1" PVC CONDUIT FOR TAMPER SWITCH.
- PROPOSED LOCATION OF TRANSFORMER PAD. CONTRACTOR TO VERIFY EXACT LOCATION AND SIZE WITH POWER COMPANY PRIOR TO INSTALLATION. CONTRACTOR SHALL BE RESPONSIBLE FOR INSTALLATION OF CONCRETE PAD. CONDUIT AND PIPE BOLLARDS AS REQUIRED BY THE ELECTRIC COMPANY. CONTRACTOR SHALL COORDINATE SAID WORK WITH THE ELECTRIC COMPANY. FINAL LOCATION OF TRANSFORMER AND BOLLARD CANNOT CONFLICT WITH TRUCK ACCESS TO DOCK DOOR.
- UNDERGROUND TELEPHONE FROM POLE TO BUILDING TO BE EXTENDED BY TELEPHONE COMPANY.
- CONTRACTOR IS RESPONSIBLE TO COORDINATE WITH THE TELEPHONE COMPANY FOR THE INSTALLATION OF OVERHEAD TELEPHONE LINES. CONTRACTOR SHALL COORDINATE THE TYING OF INDIVIDUAL METERS WITH THE ELECTRIC COMPANY. CONTRACTOR TO COORDINATE WITH TELEPHONE COMPANY TO INSURE PROPER SEPARATION BETWEEN OVERHEAD LINES AND LIGHT POLES.
- 3" DOMESTIC WATER LINE ENTRY WITH METER PER MILWAUKEE PUBLIC WORKS REQUIREMENTS. CONTRACTOR SHALL BE RESPONSIBLE FOR INSTALLING ANY APPURTENANCES ON THE DOMESTIC LINE SUCH AS BACKFLOW PREVENTION DEVICES, GATE VALVES, ETC., WHICH MAY BE REQUIRED. CONTRACTOR TO COORDINATE WITH CITY OF MILWAUKEE PUBLIC WORKS DEPARTMENT.
- SPRINKLER ENTRY. CONTRACTOR SHALL BE REQUIRED TO INSTALL ANY APPURTENANCES ON THE SPRINKLER LINE SUCH AS, BUT NOT LIMITED TO, A DOUBLE DETECTOR CHECK BACKFLOW PREVENTION DEVICE, IN SERIES WITH A CHECK VALVE, GATE VALVES, ETC., MEETING WATER COMPANY SPECIFICATIONS.
- PROPOSED FIRE HYDRANT AND ASSEMBLY, TYPICAL AS INDICATED. SEE DETAIL SHEET.
- REMOTE GARDEN CENTER UTILITIES PIPE BOLLARD. SEE DETAIL SHEET.
- ALL LP CAMERA PULL BOXES LOCATED IN PAVED AREAS SUBJECT TO TRUCK TRAFFIC SHALL BE "H-20" LOAD RATED. THE TYPICAL PULL BOX SIZE WILL BE 17" X 30" X 28" "QUAZITE" PG1730BA28 BOX WITH PG1730HHD LID, OR APPROVED EQUAL. DEEPER BOXES MAY BE REQUIRED WHEN THE CONDUIT ALIGNMENT IS AFFECTED BY OTHER UTILITIES. THE PULL BOX SHALL BE INSTALLED PER THE MANUFACTURER'S SPECIFICATION WITH A CONCRETE COLLAR AND A MINIMUM OF 8" OF GRAVEL COMPACTED PER PROJECT SPECIFICATIONS.
- ONE 3" DIAMETER CARLON TYPE "DB" DIRECT BURIAL TELEPHONE DUCT OR 3" SCHEDULE 40 PVC. INSTALL GALVANIZED PULL WIRE OR PURPLE PROPYLENE POLYETHYLENE ROPE WITH A MINIMUM PULLING TENSION OF 100 POUNDS. THE MINIMUM BURIAL DEPTH SHALL BE 24". INSTALL AN ORANGE DETECTABLE HAZARD TAPE WITH INTEGRAL "BURIED CABLE" WORDING, 12" ABOVE CONDUIT.
- ONE 2" CONDUIT SHALL BE CARLON TYPE "DB" DIRECT BURIAL TELEPHONE DUCT OR SCHEDULE 40 PVC. INSTALL GALVANIZED PULL WIRE OR PURPLE PROPYLENE POLYETHYLENE ROPE WITH A MINIMUM PULLING TENSION OF 100 POUNDS. THE MINIMUM BURIAL DEPTH SHALL BE 24". INSTALL AN ORANGE DETECTABLE HAZARD TAPE WITH INTEGRAL "BURIED CABLE" WORDING, 12" ABOVE CONDUIT. THE 2" LP CAMERA CONDUIT SHALL BE SEPARATED FROM THE 480VAC LIGHT FIXTURE POWER BY A DIVIDER PLACED IN THE LIGHT POLE BASE JUNCTION BOX.

PRELIMINARY - NOT FOR CONSTRUCTION

Kimley»Horn

2550 UNIVERSITY AVENUE, WEST, SUITE 238N, ST. PAUL, MN 55114
WWW.KIMLEY-HORN.COM

DESIGN ENGINEER:

LUCAS C. PAYNE, P.E.

SCALE

AS NOTED

DESIGNED BY

JDS

DRAWN BY

JDS

CHECKED BY

LCP

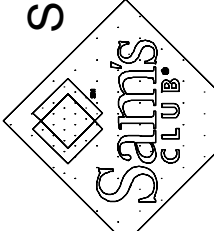
DATE:

07/08/2014

UTILITY PLAN

SAM'S CLUB STORE #6324-08
MILWAUKEE, WI

SAM'S REAL ESTATE
BUSINESS TRUST



DATE
07/08/2014

PROJECT NO.
116199170

SHEET NUMBER

6140

FILE NUMBER 140196

