



LIVING WITH HISTORY

Certificate of Appropriateness

Milwaukee Historic Preservation Commission/200 E. Wells Street/Milwaukee, WI 53202/phone 414-286-5712/fax 414-286-3004

Property	1677 N. FARWELL AV.	Brady Street Historic District
Description of work	Install new metal fencing for trash bin enclosure on Brady Street sidewalk. Install new awnings. Install new signage. Spot repoint brick as needed.	
Date issued	3/24/2014	PTS ID 91671 COA, signage, awnings etc.

In accordance with the provisions of Section 320-21 (11) and (12) of the Milwaukee Code of Ordinances, the Milwaukee Historic Preservation Commission has issued a certificate of appropriateness for the work listed above. The work was found to be consistent with preservation guidelines. The following conditions apply to this certificate of appropriateness:

All work will be done according to the drawings, photos and specifications contained in this COA. Logo sign will be by a type A sign with a solid background and push-thru or acrylic-backed letters. Awning fabric will be a non-shiny acrylic material made to look like traditional canvas. Awning will not be illuminated. Metal fence around trash bins must be maintained. Damaged, dented or corroded fencing must be replaced. Fence must have a painted finish (not anodized) must be kept clean. The fence is on the city right of way. Any new mortar for repointing must match the original in terms of color, texture, hardness, joint width and finish. Only mortar that is missing, damaged or severely eroded should be replaced. New mortar should be no harder than type K. A sample panel of mortar no more than 1-1/2 feet square must be reviewed and approved by HPC staff prior to general installation of the material. Please note that mortar that is too hard is subject to premature failure and can actually damage the historic brick. Please see the city's books As Good As New and Good for Business for more information on historic masonry.

All work must be done in a craftsman-like manner, and must be completed within one year of the date this certificate was issued. Staff must approve any changes or additions to this certificate before work begins. Work that is not completed in accordance with this certificate may be subject to correction orders or citations. If you require technical assistance, please contact Paul Jakubovich of the Historic Preservation staff as follows: Phone: (414) 286-5712 Fax: (414) 286-3004 E-mail: pjakub@milwaukee.gov.

Paul Schuch

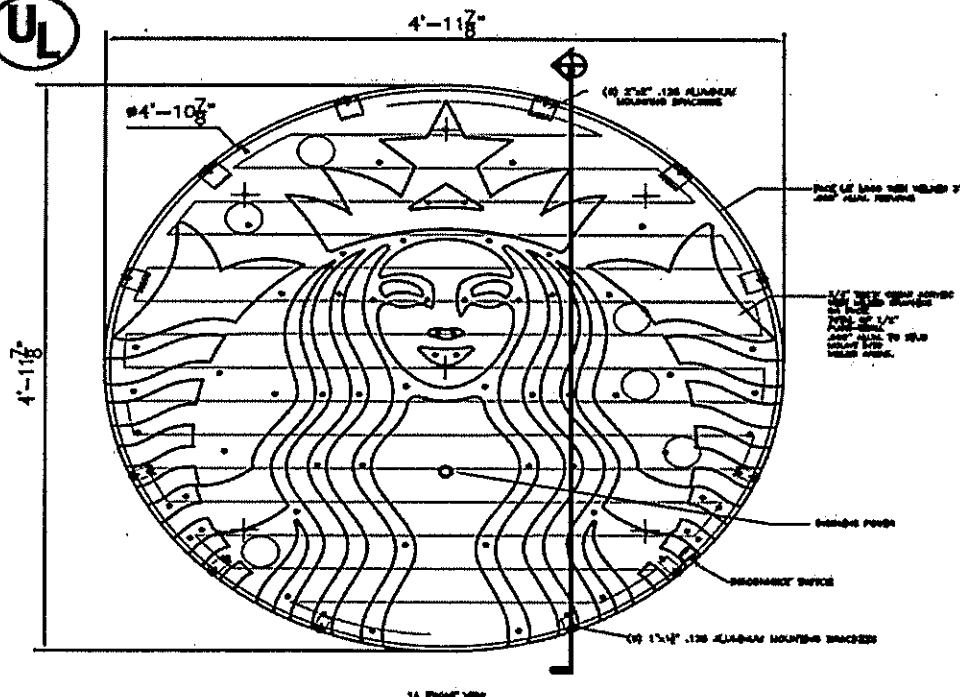
Copies to: Development Center, Ald. Nik Kovac, Inspector Bill Richter (286-2518), Inspector Heidi Weed



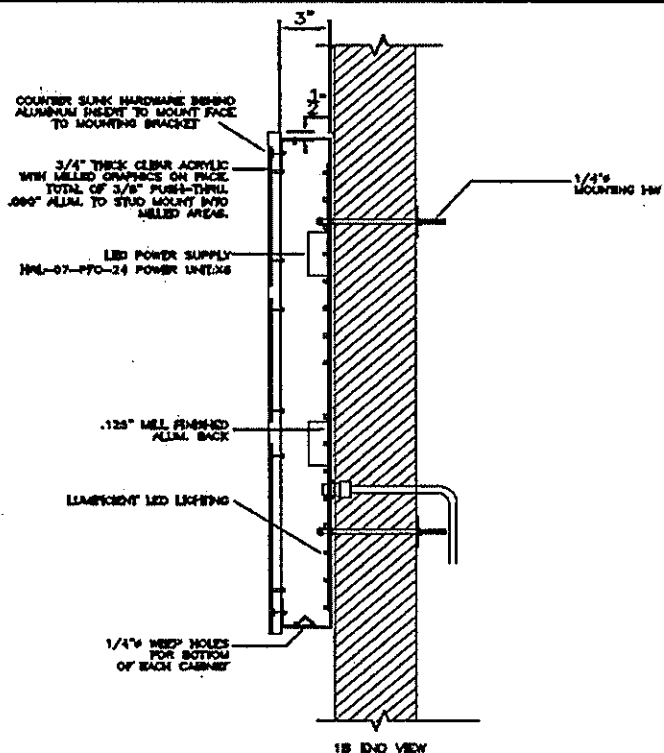
Install new Starbucks awning over storefront windows. Install new logo blade sign and new logo wall sign. Install new trash bin enclosure.



Remove existing wood enclosure around trash bins on sidewalk. Install new metal fence with gaps no more than $\frac{1}{4}$ " between pickets in place of the old enclosure. New enclosure must be maintained and any dented, damaged, or corroded sections must be replaced.

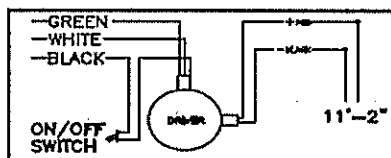


1A FRONT VIEW

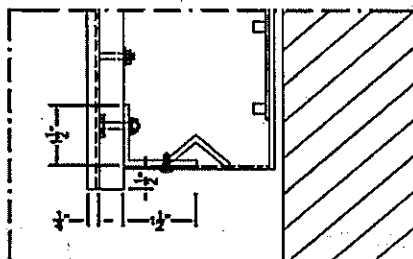


1B END VIEW

WIRE SCHEMATIC / 11'-2\"/>



DRIVER 1,2,3,4,5,6 : HYPERION HRL-07-PFC-24
0.25A @ 120V - 50-60Hz
POWERS UP TO 15 LINEAR FEET OF HYPERION STRIP
TOTAL AMPS: 1.50
CIRCUITS REQ: 1-20AMP

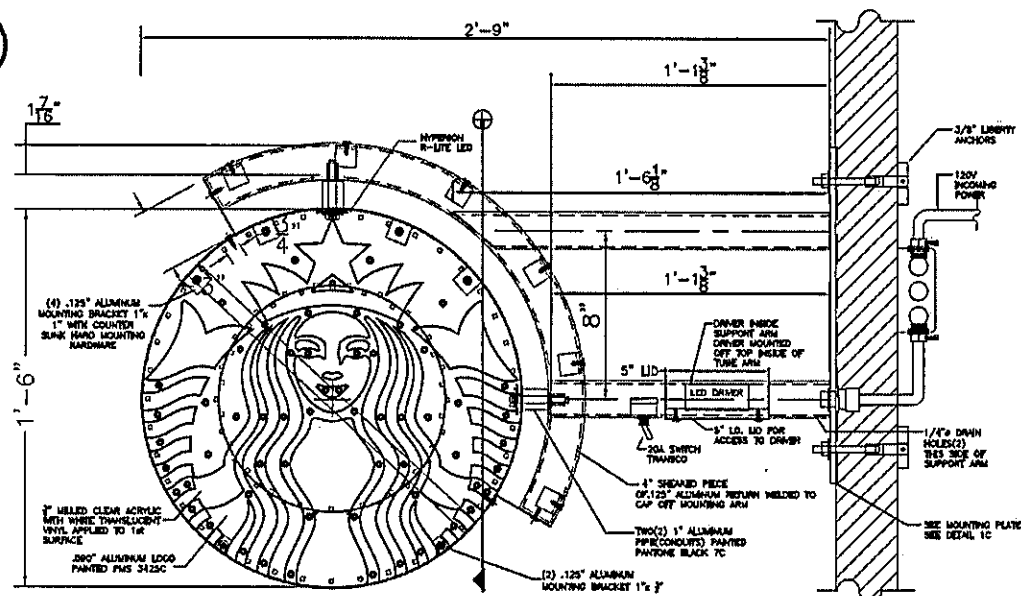


FACE MOUNTING DETAIL

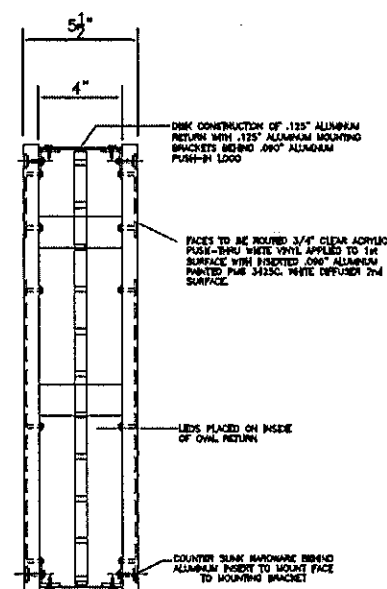
PARTS LIST		
1	HYPERION HRL-07-PFC-24	POWER SUPPLY
2	HYPERION HRL-07-PFC-24	POWER SUPPLY
3	HYPERION HRL-07-PFC-24	POWER SUPPLY
4	HYPERION HRL-07-PFC-24	POWER SUPPLY
5	HYPERION HRL-07-PFC-24	POWER SUPPLY
6	HYPERION HRL-07-PFC-24	POWER SUPPLY

DRY	
DAMP	
WET	x

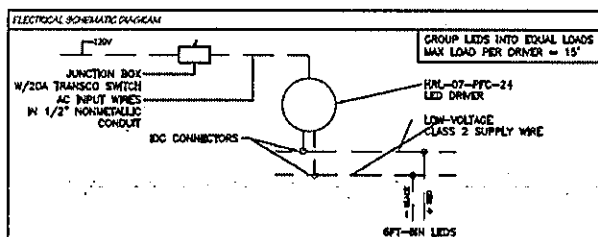
Drawing of new type A logo sign (wall sign) with solid metal background and push-thru graphics. Internally illuminated.



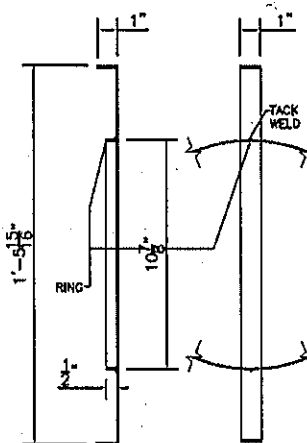
1A FRONT VIEW



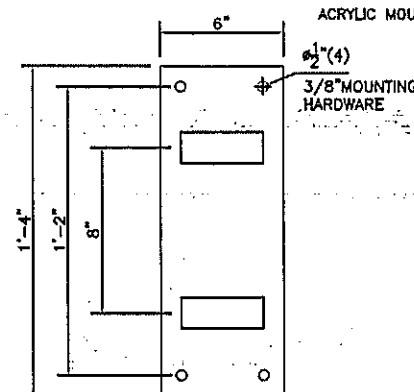
1B SIDE VIEW



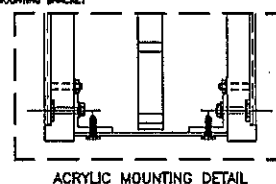
SPECIFICATIONS:
18" DOUBLE FACED WITH PUSH THRU INTERNALLY ILLUMINATED BLADE SIGN LOGO, LOGO DISK CABINET TO BE 4"DEEP, FABRICATED FROM 1/8" ALUMINUM, PAINTED SATIN FINISH BLACK, FACES TO BE 3/4" CLEAR ACRYLIC WITH PUSH-THRU, 1" MOUNTING TABS TO BE ATTACHED WITH COUNTER SUNK HARDWARE UNDERNEATH PUSH-THRU AND TO THE RETURN. PUSH-THRU GRAPHICS OF LOGO TO BE PAINTED PMS 3422AC, 1ST SURFACE TO BE 3M TRANSLUCENT WHITE, INTERNALLY ILLUMINATE LOGO DISK WITH LUMINOUS WHITE LED'S INSIDE RETURN PERIMETER, POWER WITH SELF CONTAINED LUMINOUS POWER SUPPLY COVERED WITH WHITE VINYL FILM, ROUNDED LOGO SURROUND TO BE 1/8" ALUMINUM, FABRICATED AS A 1 1/2" X 6" CHANNEL, PAINTED PANTONE BLACK 7C, SUPPORT ARMS TO BE 1 1/2" X 4" BROME FORMED RECTANGULAR ALUMINUM TUBE, PAINTED PANTONE BLACK 7C, CABINET SUPPORTS TO BE 1/2" RIGID CONDUIT AND ALUMINUM PIPE, PAINTED PANTONE BLACK 7C, WALL PLATE TO BE 18" X 6" X 1/4" ALUMINUM, PAINTED PANTONE BLACK 7C, FASTEN SECURELY TO WALL WITH 3/8"(10MM) BOLTS



INNER RING DETAIL



MOUNTING PLATE DETAIL 1C



ACRYLIC MOUNTING DETAIL

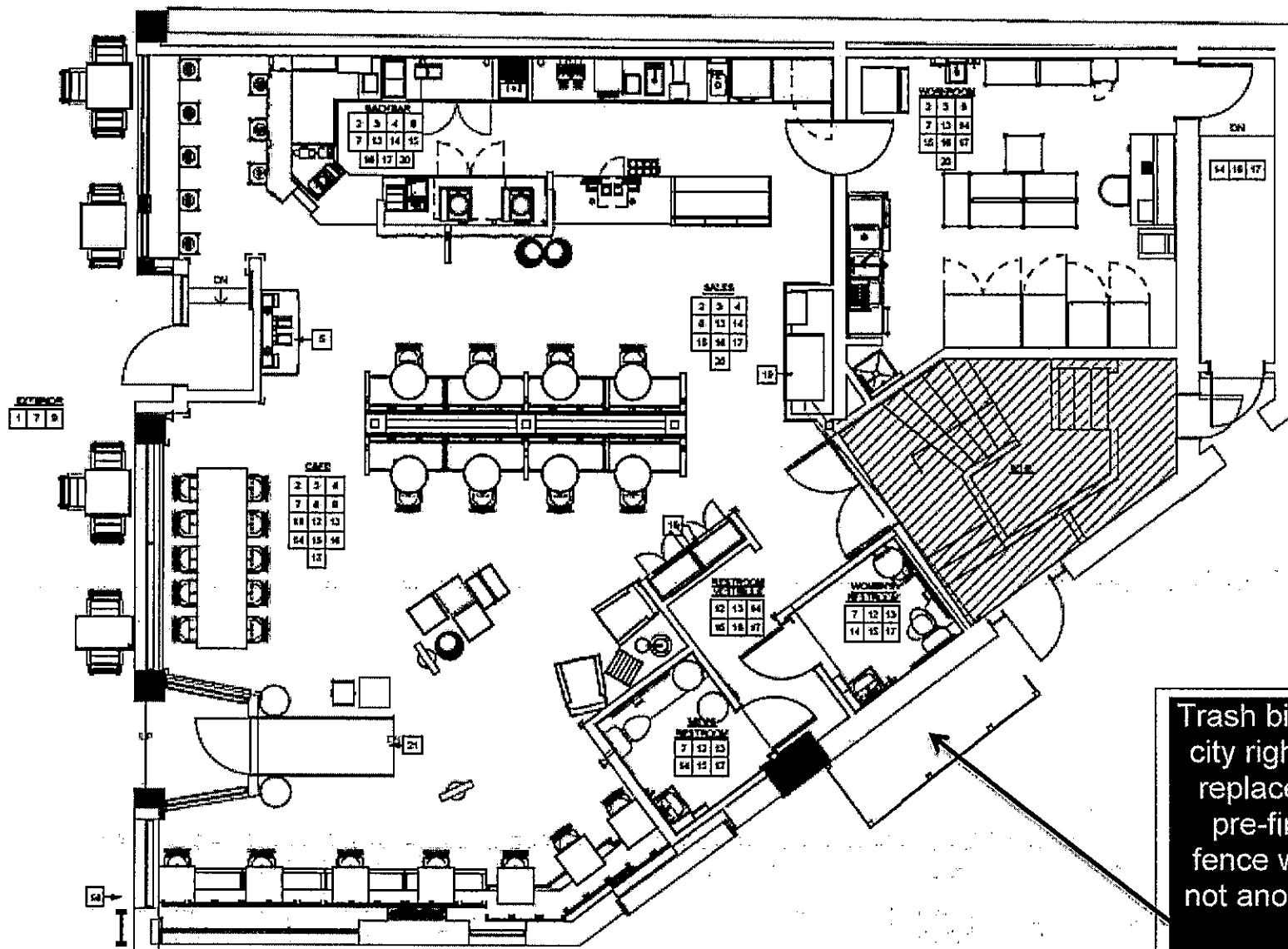
DRY	
DAMP	
WET	X

120 VOLTS

BE FASTENED TO THE WALL WITH 3/8" X 6" X 1/4" ALUMINUM BOLTS. THE SIGN IS TO BE FASTENED TO THE WALL WITH 3/8" X 6" X 1/4" ALUMINUM BOLTS. THE SIGN IS TO BE FASTENED TO THE WALL WITH 3/8" X 6" X 1/4" ALUMINUM BOLTS.

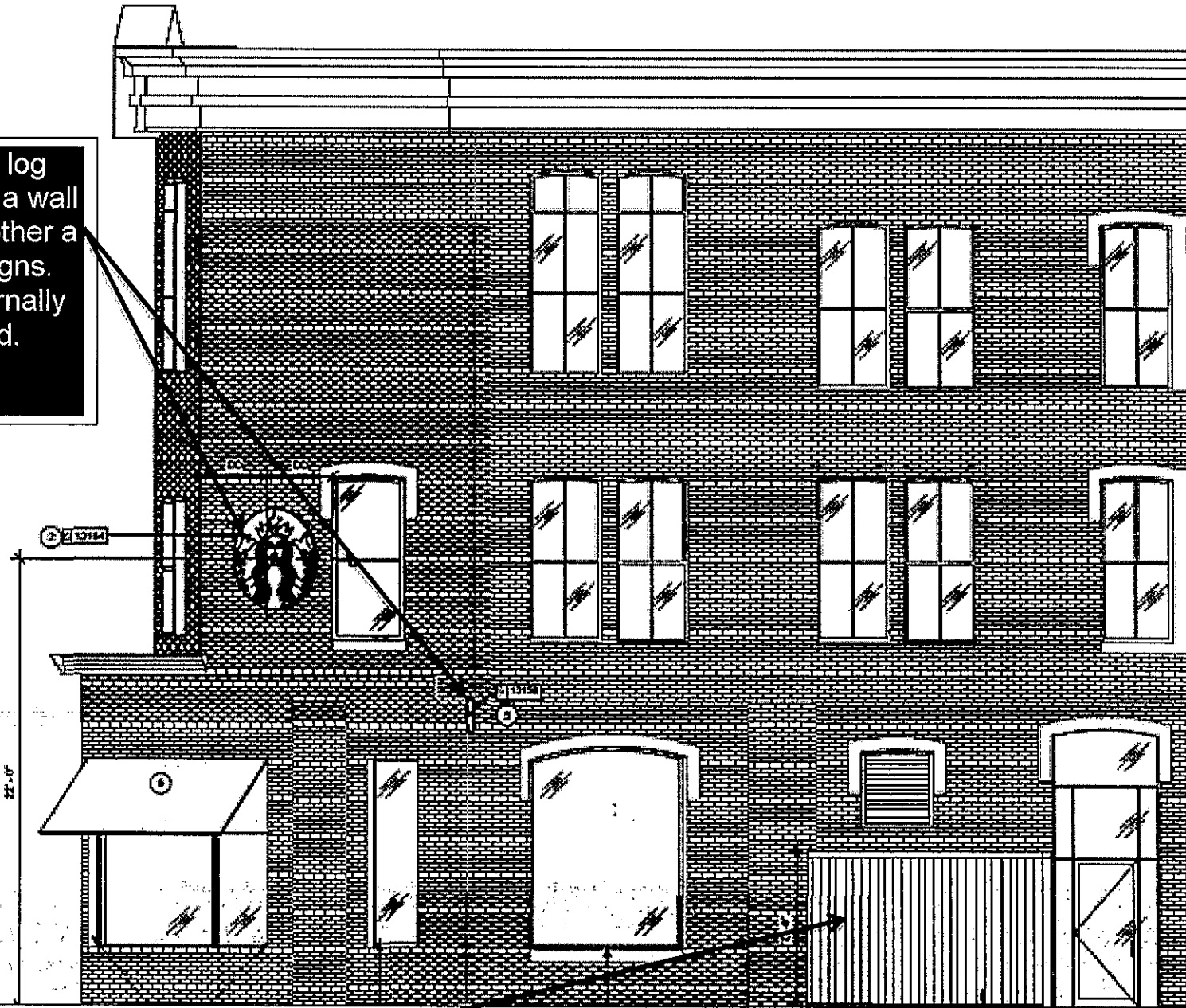
THIS SIGN IS THE ORIGINAL AND UNPAINTED SIGN OF THE SIGN COMPANY. THE SIGN IS TO BE FASTENED TO THE WALL WITH 3/8" X 6" X 1/4" ALUMINUM BOLTS. THE SIGN IS TO BE FASTENED TO THE WALL WITH 3/8" X 6" X 1/4" ALUMINUM BOLTS.

Drawing of new type A logo sign (projecting blade sign) with solid metal background and push-thru graphics. Internally illuminated.

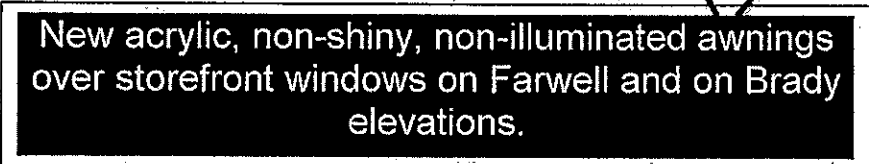


Trash bin enclosure on city right of way to be replaced with a new pre-finished metal fence with a painted, not anodized finished.

New type A log signs. One is a wall sign and the other a projecting sign. Both are internally illuminated.



Remove existing wood trash bin enclosure and replace with a new metal, pre-finished fence. This fence must be maintained in top condition. Any dented, corroded or otherwise deteriorated sections or finishes must be repaired.



**Projecting wall sign
on north elevation
facing Brady Street.
See attached shop
drawings of type A
sign**