



Milwaukee Police Department Chief Edward A. Flynn

2013 Crime and Command Staff Presentation

March 19, 2014

UCR Crime Stats

Year End Totals 2007 – 2013

Offense	2007	2008	2009	2010	2011	2012	2013	% Chg 07-13	% Chg 12-13
Murder	105	71	72	95	87	91	105	0.0%	15.4%
Forcible Rape	236	205	205	195	204	233	239	1.3%	2.6%
Robbery	3,543	3,249	3,181	2,947	3,093	3,105	3,290	-7.1%	6.0%
Aggravated Assault	5,170	4,989	3,924	3,737	3,256	4,507	4,391	-15.1%	-2.6%
Burglary	6,217	6,350	6,578	6,207	7,080	7,039	6,498	4.5%	-7.7%
Theft	24,402	23,795	23,479	21,231	19,028	18,590	16,135	-33.9%	-13.2%
Motor Vehicle Theft	7,752	6,541	4,875	4,329	4,562	4,812	4,386	-43.4%	-8.9%
Arson	349	320	359	249	272	309	287	-17.8%	-7.1%
Total Violent	9,054	8,514	7,382	6,974	6,640	7,936	8,025	-11.4%	1.1%
Total Property	38,720	37,006	35,291	32,016	30,942	30,750	27,306	-29.5%	-11.2%
Total Crime	47,774	45,520	42,673	38,990	37,582	38,686	35,331	-26.0%	-8.7%

Data retrieved from the Wisconsin Department of Justice- Statistical Analysis Center Crime Information Bureau

Violent Crime includes homicide, forcible rape, robbery and aggravated assault. Property Crime includes burglary, theft, auto theft, and arson.

In 2014, the FBI will be reporting 2013 Rape under the new definition, which includes Forcible Rape, Forcible Sodomy, and Sexual Assault with an Object.

The above figures are inclusive of Forcible Rape only.

2013 Major Accomplishments

- ▶ Crime category decreases were reported in:
 - ▶ Aggravated Assault (-2.6%)
 - ▶ Burglary (-7.7%)
 - ▶ Theft (-13.2%)
 - ▶ Motor Vehicle Theft (-8.9%)
 - ▶ Arson (-7.1%)
- ▶ Total property crime, including burglary, motor vehicle theft, theft/larceny reduction of (-11.2%) compared to 2012 and a reduction of (-29.5%) compared with 2007
- ▶ Total Part I crime reduction of (-8.7%) compared with 2012 and a reduction of (-26%) compared with 2007

2013 Major Accomplishments

- ▶ Reorganized the department to flatten chain of command and focus operations around neighborhoods
- ▶ Established formal Risk Management Command to focus on policy and performance
- ▶ Upgraded squad camera fleet to DP3 technology
- ▶ Continued progress on technology issues including RMS and OpenSky

2013 Department Challenges

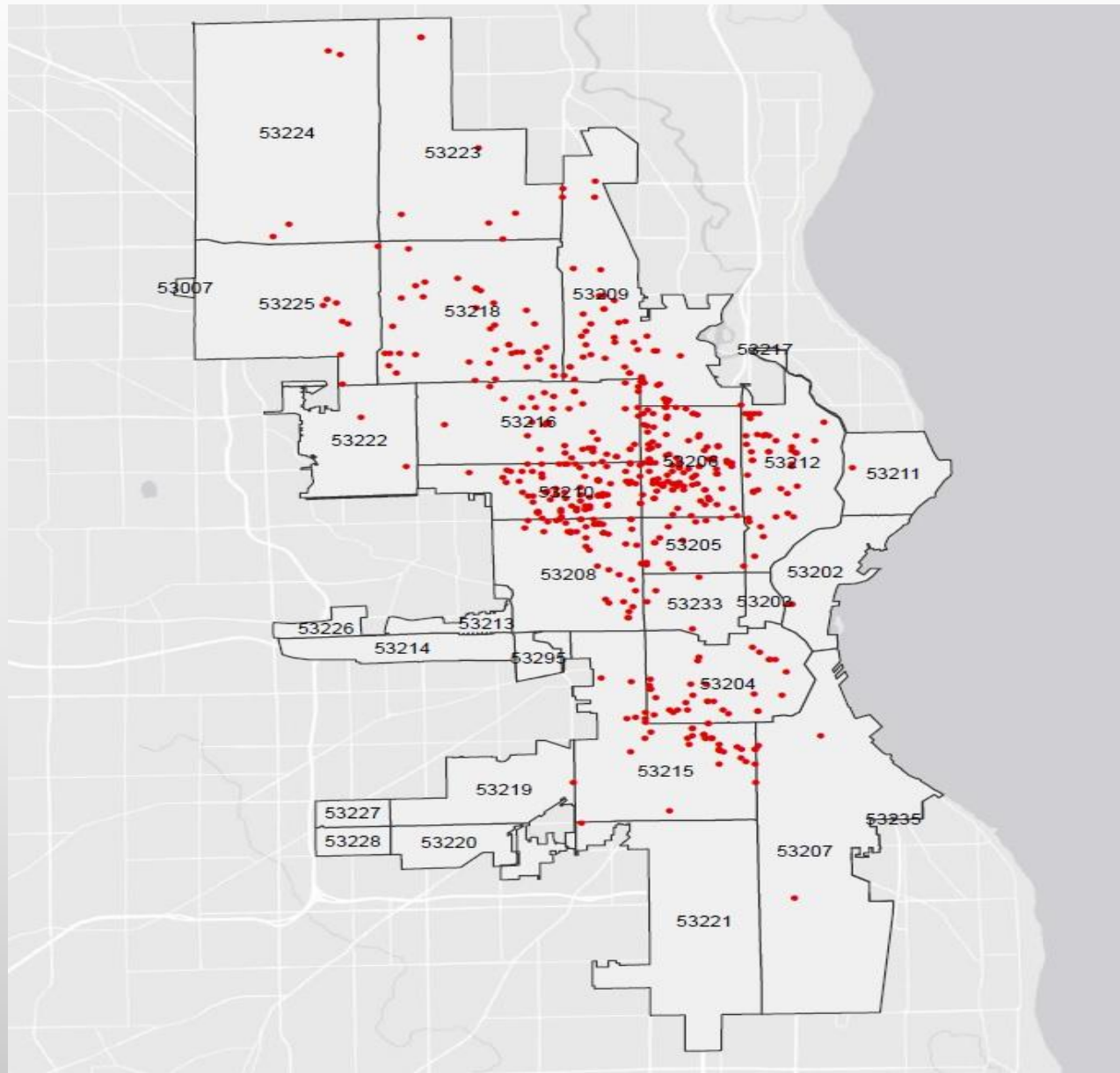
▶ Robbery

- ▶ First six months of 2013 drove a (6%) year end increase compared with 2012
- ▶ Department response:
 - ▶ Relentless follow-up of gun crimes
 - ▶ Hotspot and micro-policing initiatives- putting officers in the right places, targeting the right people, at the right times
 - ▶ Use of actionable, real time intelligence through IFC- Repeat Gun Offender Initiative
 - ▶ Probation/parole checks with MCORP, DOC, CPU
 - ▶ Community engagement activities
- ▶ As a result, during second half of 2013, strategic robbery initiatives produced a (-2%) decrease and the lowest 4th quarter totals in seven years
- ▶ Despite overall increase, robbery was reduced by (-7%) compared 2007

2013 Non-Fatal Shootings by District

District	2006	2007	2008	2009	2010	2011	2012	2013	Total	2013 % of Total	2006-2013	2012-2013
District 1	2	4	4	3	3	4	4	5	29	1%	150%	25%
District 2	62	52	46	47	43	52	63	71	436	13%	15%	13%
District 3	169	111	119	132	108	118	147	122	1026	23%	-28%	-17%
District 4	62	58	42	38	29	38	46	51	364	10%	-18%	11%
District 5	221	171	169	150	128	169	144	165	1317	31%	-25%	15%
District 6	6	6	5	9	5	2	3	5	41	1%	-17%	67%
District 7	99	83	63	60	84	91	102	112	694	21%	13%	10%
City-Wide	621	485	448	439	400	474	509	531	3907	100%	-14%	4%

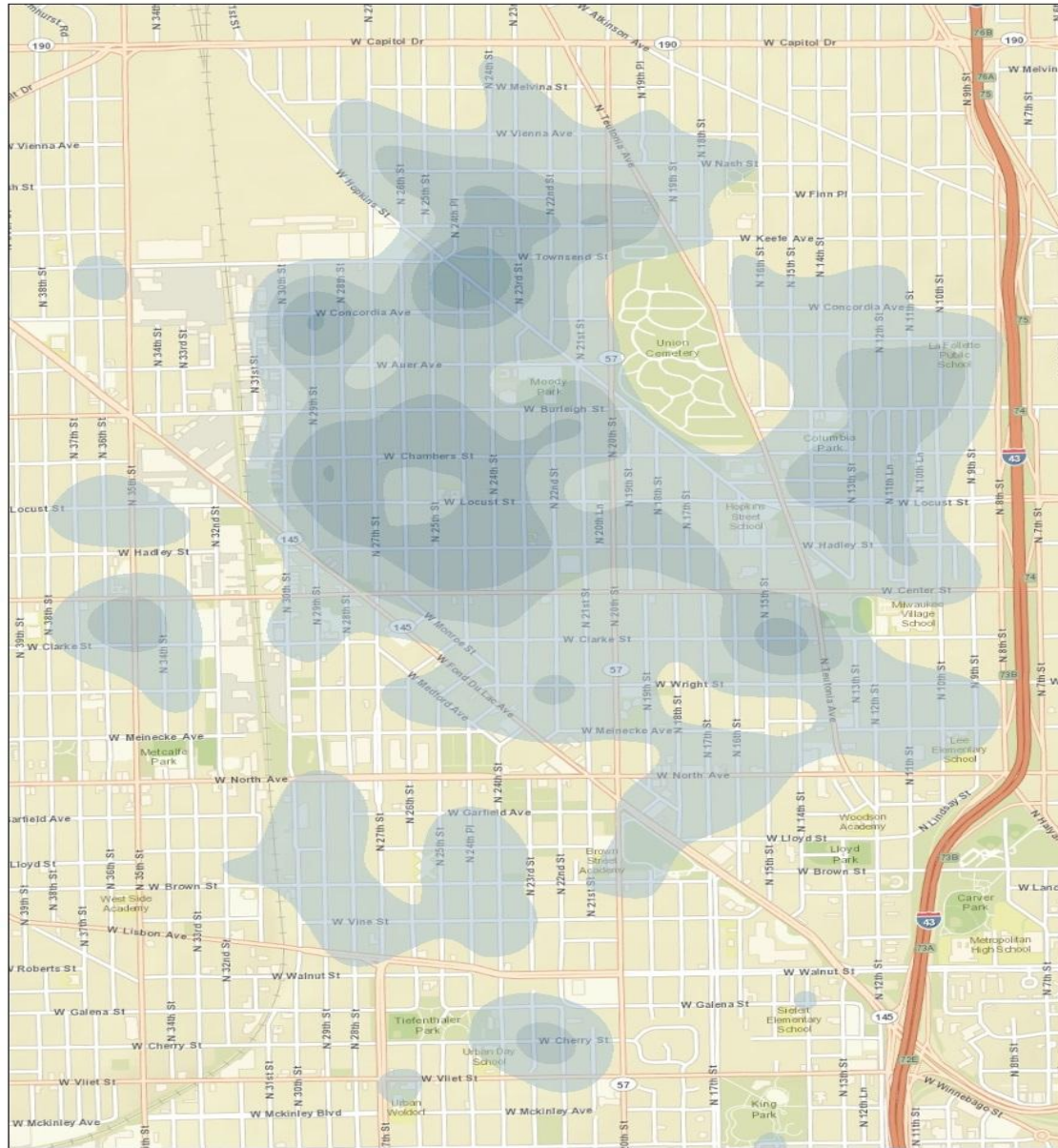
2013 Non-Fatal Shootings



2013 Non-Fatal Shootings by Zip Code

Zip Code	2006	2007	2008	2009	2010	2011	2012	2013	Total	2013 % Total	2006-2013	2012-2013
Total	621	485	448	439	400	474	509	531	3907	100%	-14%	4%
53206	166	98	125	114	82	112	94	101	892	19%	-39%	7%
53210	81	59	62	39	53	53	66	81	494	15%	0%	23%
53209	59	62	45	34	38	44	54	52	388	10%	-12%	-4%
53208	56	46	31	50	47	42	74	46	392	9%	-18%	-38%
53212	56	46	36	43	27	48	32	43	331	8%	-23%	34%
53216	33	25	27	26	42	36	41	43	273	8%	30%	5%
53218	36	34	22	19	28	26	27	40	232	8%	11%	48%
53215	25	22	22	23	16	21	21	38	188	7%	52%	81%
53204	40	29	27	25	28	29	39	32	249	6%	-20%	-18%
53205	25	22	22	32	15	21	19	13	169	2%	-48%	-32%
53225	17	11	8	10	4	13	9	8	80	2%	-53%	-11%
53223	6	3	2	4	3	1	4	7	30	1%	17%	75%
53224	5	8	9	8	3	6	6	4	49	1%	-20%	-33%
53233	7	4	2	2	2	8	5	4	34	1%	-43%	-20%
53207	3	4	0	3	4	3	6	3	26	1%	0%	-50%
53202	1	0	3	2	0	2	1	3	12	1%	200%	200%
53222	1	1	2	0	4	5	3	2	18	0%	100%	-33%
Other*	4	11	3	5	4	4	8	11	50	2%	175%	38%

2013 ShotSpotter Density

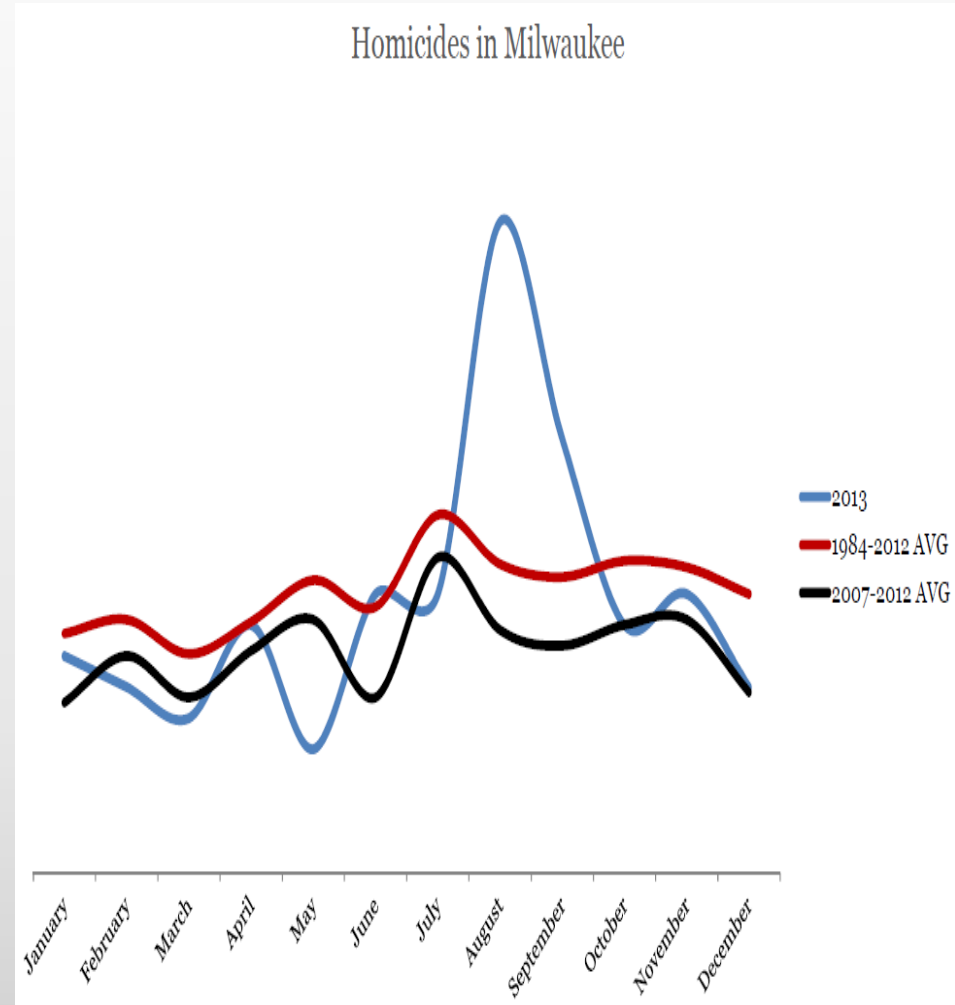


*Data retrieved from MPD CAD

2013 Department Challenges

► Homicides

- First six months of 2013, homicides (38) were below the average of the previous six years (39)
- Violent August and September accounted for nearly a third of all homicides (33) during 2013
- Total homicides (105), was a 15% increase from 2012, the same total in 2007
- Increase in female homicide victims (18) compared with (7) in 2012
- Increase in family violence homicides (17) compared with (6) in 2012



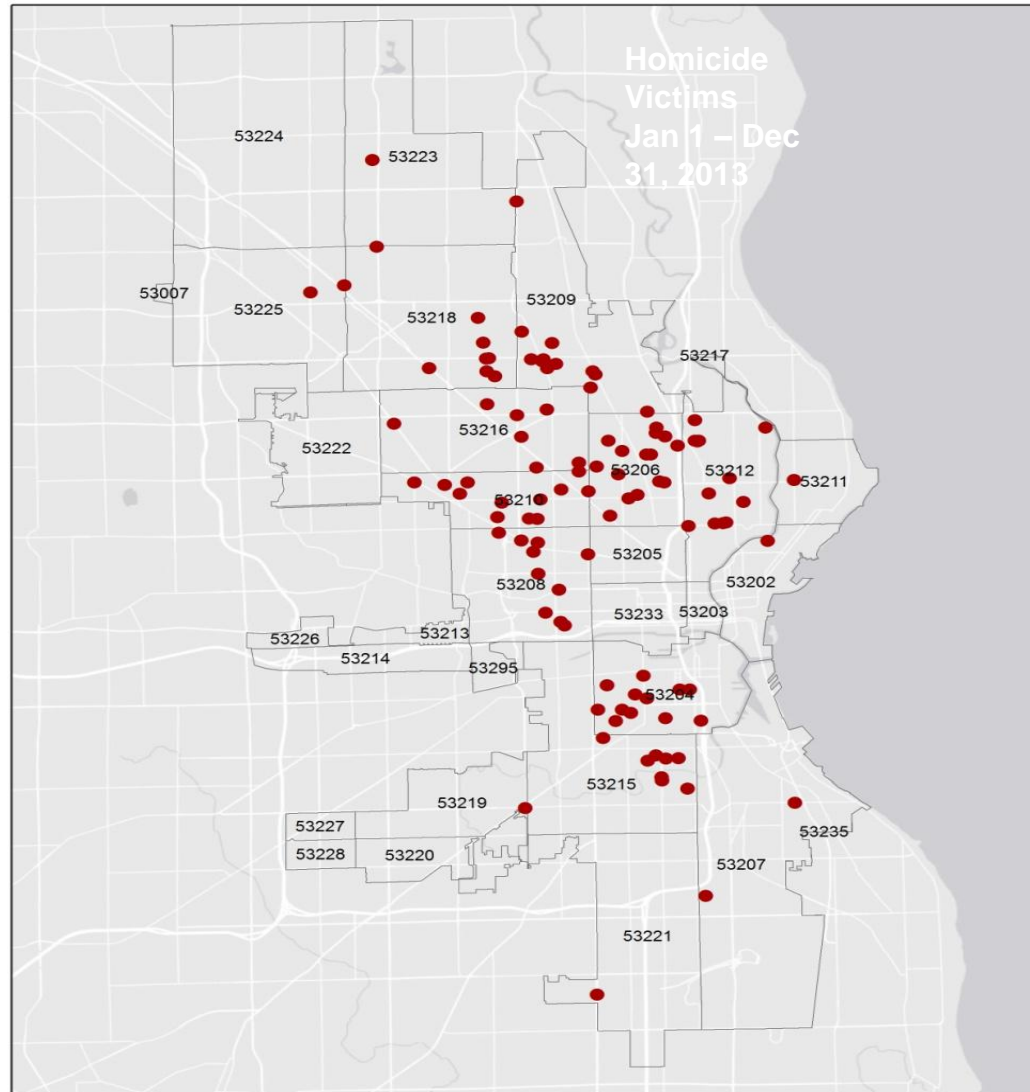
Homicide by District

Districts 5 and 7 had the highest number of homicides since 2007, while District 3 and 4 had the lowest frequency of homicide since 2007. Combined, District 2, 5, and 7 accounted for 74% of the homicides that occurred in 2013.

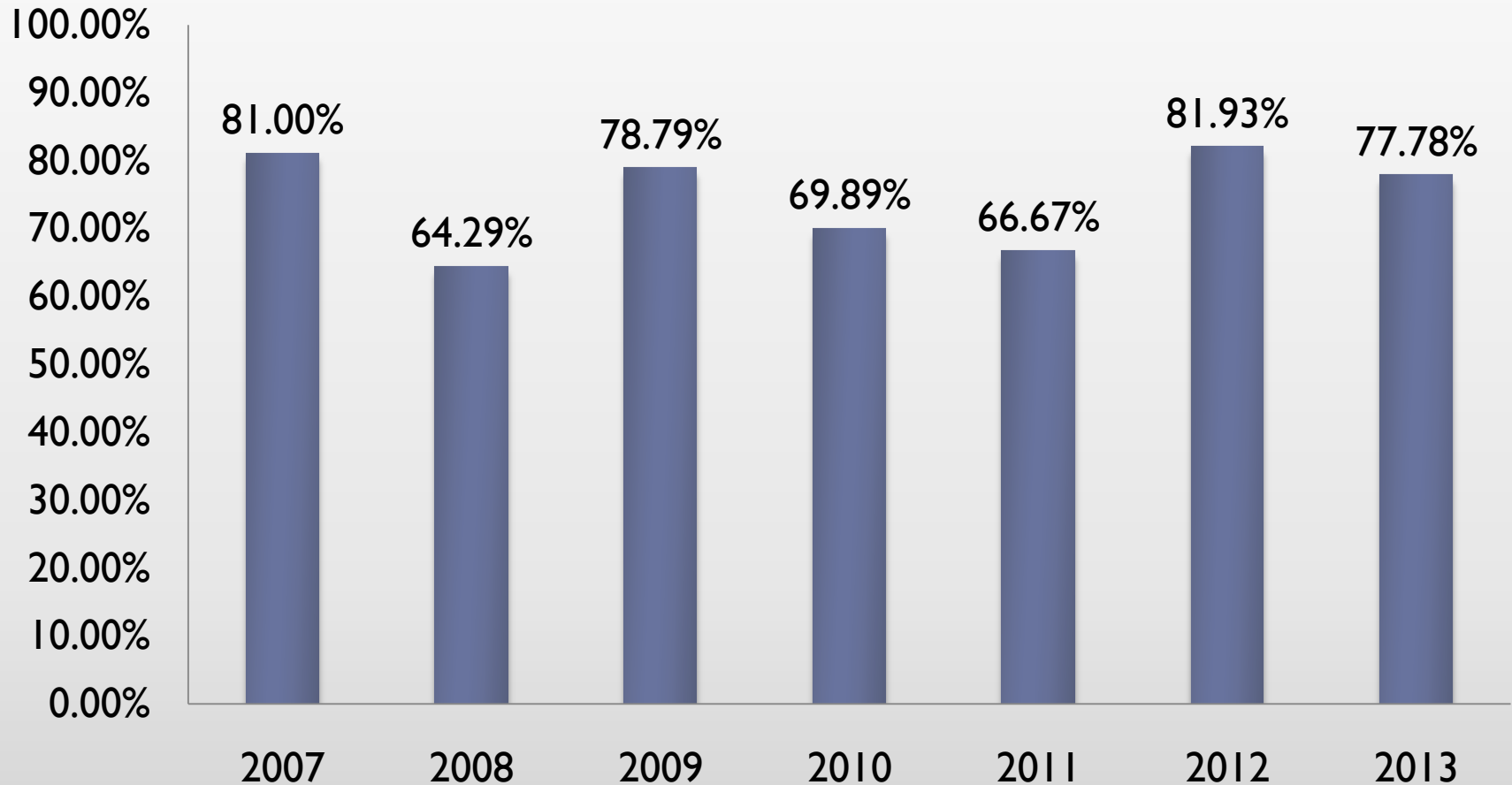
	2007	2008	2009	2010	2011	2012	2013	% Chg 2007-13	% Chg 2012-13
District 1	2	2	0	2	2	0	2	0%	NA
District 2	11	11	6	21	13	16	20	82%	25%
District 3	27	23	17	18	21	20	14	-48%	-30%
District 4	9	11	12	13	10	13	6	-33%	-54%
District 5	30	10	19	21	25	26	33	10%	27%
District 6	4	4	3	0	3	3	5	25%	67%
District 7	22	10	15	19	14	13	25	14%	92%
Total*	105	71	72	94	88	91	105	0%	15%

*Time period is January 1, 2007 to December 31, 2013. MPD reported 95 homicides in 2010 and 87 homicides in 2011. The totals listed above differ slightly for these years due to the date used to query homicides. *Data provided by the MPD Metro Div and HRC.

Homicide Victims by Zip Code, 2013

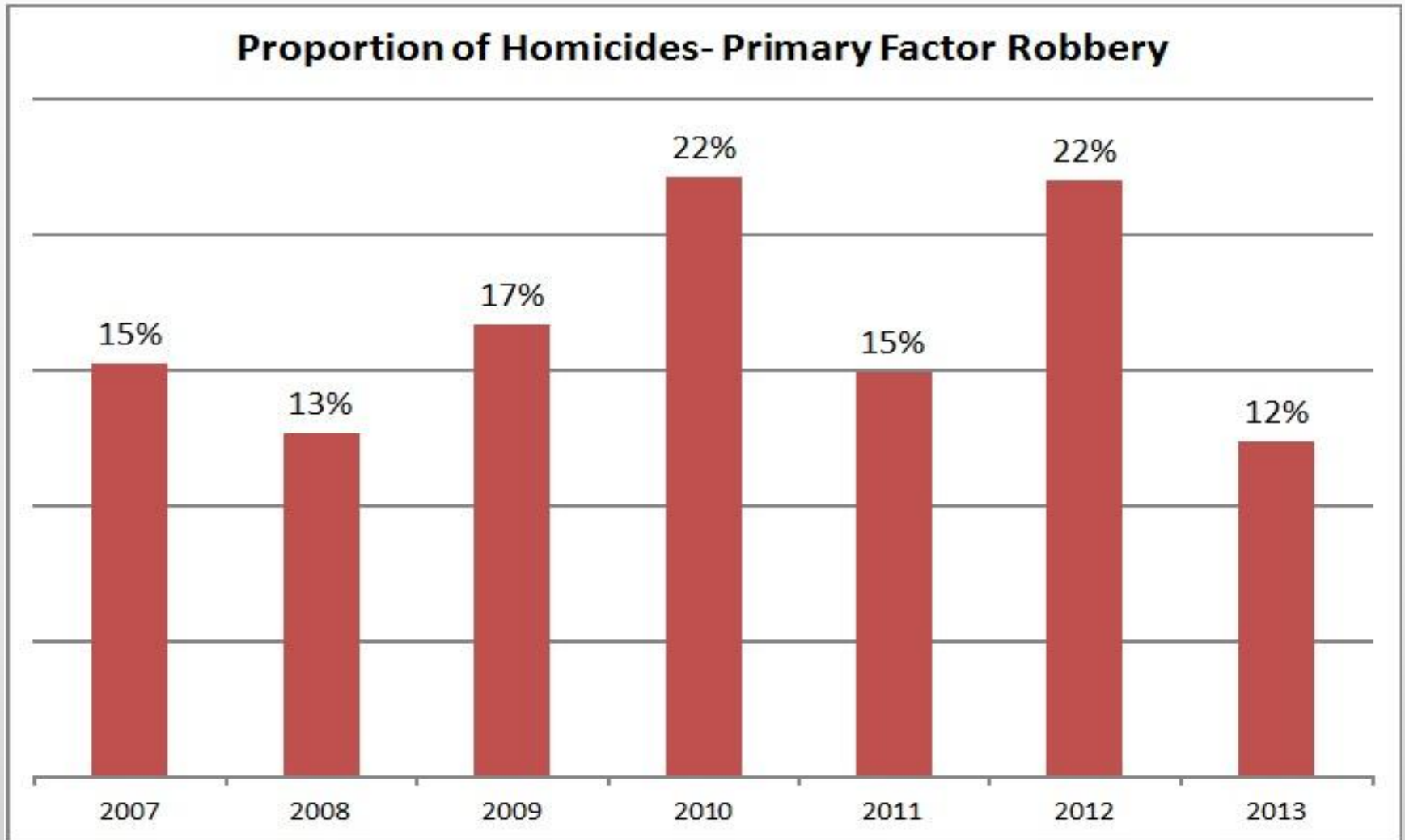


2013 Firearm Related Homicides



*The motive is subject to change pending investigations. There may be additional homicides which have some type of gang related factor which may not be captured with current data, or may be unknown. May contain rounding error.*Data provided by the MPD Metropolitan Investigations Division.

2013 Robbery Related Homicides



2014 Goals and Objectives

- ▶ Continued impact on the levels of crime
 - ▶ Hotspot Policing Plans
 - ▶ Group Violence Reduction (both adult/ juvenile focus)
 - ▶ Engagement of CJ partners in mental health and juvenile system improvements
 - ▶ Legislative progress on firearms law loopholes
- ▶ Continued progress on community engagement & department legitimacy
 - ▶ Formalizing Community Development/Engagement functions through OMAP
 - ▶ Recognition as a “teaching police department” open to embedded research and scholarly inquiry
 - ▶ Professional citizen survey conducted through FPC
- ▶ Continued improvement in technology
 - ▶ ShotSpotter expansion
 - ▶ Acceptance of OpenSky system (originally contracted 2003)
 - ▶ Body camera pilot testing
 - ▶ RMS replacement
- ▶ Continued efficiency improvements
 - ▶ Better use of fleet and capital budget data for planning purposes
 - ▶ Enhanced civilianization of specific professional functions



Milwaukee Police Department

Daily Crime & Service - CITYWIDE

Based on **FROM** dates for tactical planning purposes - Printed 07:00 Mar-19-2014

Mar-18-2014	1 Day	7 Days	Monthly					6 weeks			Yearly		
	Mar-18-14 to Mar-18-14	Mar-12-14 to Mar-18-14	Month to Yesterday	Last Year Month to Yesterday	Last Year Month Total	Monthly Projected	Month Projected Change	Feb-25-14 to Mar-18-14	Feb-04-14 to Feb-24-14	CHANGE within 6-Wks	Year to Yesterday	Last Year to Yesterday	Year to Yesterday Change
Homicide	0	2	4	3	5	6	20 %	4	2	100 %	8	15	-47 %
Agg Assault	7	43	147	189	341	253	-26 %	181	184	-2 %	677	724	-6 %
Forcible Rape	0	3	10	11	20	17	-15 %	10	9	11 %	30	36	-17 %
Robbery	8	44	111	105	204	191	-6 %	127	125	2 %	533	570	-6 %
Burglary	7	64	169	210	421	291	-31 %	208	200	4 %	797	1118	-29 %
Theft	11	141	394	516	962	678	-30 %	476	519	-8 %	1871	2272	-18 %
Motor Vehicle Theft	12	102	216	178	310	372	20 %	271	225	20 %	968	721	34 %
Arson	1	7	16	12	26	27	4 %	18	5	260 %	32	28	14 %
Totals	46	406	1,067	1,224	2,289	1,835	-20 %	1,295	1,269	2 %	4,916	5,484	-10 %

Agg Assault Firearm	3	14	48	60	119	82	-31 %	55	62	-11 %	258	243	6 %
Armed Robbery Firearm	5	26	57	59	111	98	-12 %	65	76	-14 %	328	325	1 %
Shooting Non-Fatal	0	3	8	8	25	13	-48 %	9	9	0 %	46	57	-19 %

CAD CALLS (minus police initiated activity & referred calls)													
Priority Emergency	0	2	4	1	3	6	100%	4	6	-33%	15	13	15%
Priority 1	144	968	2385	2206	4083	4107	1%	2791	2387	17%	9517	9695	-2%
Priority 2	234	1672	4192	3781	6524	7219	11%	5064	4762	6%	17538	15834	11%
Priority 3	206	1364	3490	3619	6277	6010	-4%	4220	4149	2%	14954	14890	0%
Priority 4	19	141	374	469	787	644	-18%	446	449	-1%	1616	1920	-16%
Priority 5	3	10	22	1308	2454	37	-98%	29	17	71%	77	5808	-99%
Totals	606	4,157	10,467	11,384	20,128	18,023	-10%	12,554	11,770	7%	43,717	48,160	-9%

Yesterday's CAD Traffic Stops within CITYWIDE

Warn	Arrested	Cited	Other	Total
557	22	104	12	695

Yesterday's CAD Subject Stops within CITYWIDE

Warn	Arrested	Cited	Other	Total
127	15	6	13	161

The FROM Date is the start of the date range describing when the victim believes the incident may have occurred. Since this date is subject to the victims perception, and when the victim reports it, these numbers will not add up in an incremental fashion from day to day. The FROM Date is chosen for tactical planning purposes. To view the complete count of all incidents handled by MPD during these dates, change the DATE TYPE to REPORTED DATE on the SSRS Reports Server at <http://MPDSQL02/Reports>. When viewed on the Reports Server, you can also double-click on the numbers to drill-through and see which specific incidents make up these totals.

