

2/25/2013 4:12:06 PM Y:\WI - Brady & Farwell - Milwaukee\existing conditions\drawings\Brady & Farwell - ECs.rvt



East Storefront Elevation

Scale: 1/4" = 1'-0"

KEYNOTES - EXISTING EXTERIOR ELEVATIONS

1. ILLUMINATED INLINEWORDMARK - 20IN
2. CANOPY
3. SUSPENDED ILLUMINATED LOGO DISK (INTERIOR) - 24IN



STARBUCKS COFFEE  
COMPANY  
2401 UTAH AVENUE SOUTH  
SEATTLE, WASHINGTON 98134  
(206) 318-1575

THESE DRAWINGS AND SPECIFICATIONS ARE CONFIDENTIAL AND SHALL REMAIN THE SOLE PROPERTY OF STARBUCKS CORPORATION, WHICH IS THE OWNER OF THE COPYRIGHT IN THIS WORK. THEY SHALL NOT BE REPRODUCED (IN WHOLE OR IN PART), SHARED WITH THIRD PARTIES OR USED IN ANY MANNER ON OTHER PROJECTS OR EXTENSIONS TO THIS PROJECT WITHOUT THE PRIOR WRITTEN CONSENT OF STARBUCKS CORPORATION. THESE DRAWINGS AND SPECIFICATIONS ARE INTENDED TO EXPRESS DESIGN INTENT FOR A PROTOTYPICAL STARBUCKS STORE (WHICH IS SUBJECT TO CHANGE AT ANYTIME) AND DO NOT REFLECT ACTUAL SITE CONDITIONS. NEITHER PARTY SHALL HAVE ANY OBLIGATION NOR LIABILITY TO THE OTHER (EXCEPT STATED ABOVE) UNTIL A WRITTEN AGREEMENT IS FULLY EXECUTED BY BOTH PARTIES.

ARCHITECT OF RECORD

**NORR**

ARCHITECTS PLANNERS  
325 N. LaSalle St. Suite 700 Chicago, IL 60654  
t 312.424.2400 f 312.424.2424 | www.norr.com

ENGINEER OF RECORD



353 Marshall Avenue  
St. Louis, Missouri 63119  
Phone (314) 772-1762  
Fax (314) 373-3514

Engineering Consultants  
Mechanical - Electrical - Plumbing

DESIGN DEVELOPMENT ONLY - NOT INTENDED FOR CONSTRUCTION

Revision Schedule			
Rev	Date	By	Description

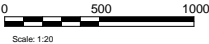
PROJECT NAME:  
**BRADY & FARWELL**  
PROJECT ADDRESS:  
**1677 N. FARWELL STREET  
MILWAUKEE, WI 53202  
MILWAUKEE COUNTY**

STORE #:  
PROJECT #:  
CONCEPT:  
PALETTE:  
ISSUE DATE:  
DESIGN MANAGER:  
LEED® AP:  
PRODUCTION DESIGNER:  
CHECKED BY:

SHEET TITLE:  
**EXISTING EXTERIOR  
ELEVATIONS**

SCALE: 1/4" = 1'-0"

SHEET NUMBER:  
**EC - 2A**



2/25/2013 4:12:12 PM Y:\WI - Brady & Farwell - Milwaukee\existing conditions\drawings\Brady & Farwell - ECs.rvt

KEYNOTES - EXISTING EXTERIOR ELEVATIONS

- 1. ILLUMINATED INLINEMARK - 20IN
- 2. CANOPY
- 3. SUSPENDED ILLUMINATED LOGO DISK (INTERIOR) - 24IN



WEST STOREFRONT ELEVATION

Scale: 1/4" = 1'-0"



DESIGN DEVELOPMENT ONLY - NOT INTENDED FOR CONSTRUCTION



STARBUCKS COFFEE  
COMPANY  
2401 UTAH AVENUE SOUTH  
SEATTLE, WASHINGTON 98134  
(206) 318-1575

THESE DRAWINGS AND SPECIFICATIONS ARE CONFIDENTIAL AND SHALL REMAIN THE SOLE PROPERTY OF STARBUCKS CORPORATION, WHICH IS THE OWNER OF THE COPYRIGHT IN THIS WORK. THEY SHALL NOT BE REPRODUCED (IN WHOLE OR IN PART), SHARED WITH THIRD PARTIES OR USED IN ANY MANNER ON OTHER PROJECTS OR EXTENSIONS TO THIS PROJECT WITHOUT THE PRIOR WRITTEN CONSENT OF STARBUCKS CORPORATION. THESE DRAWINGS AND SPECIFICATIONS ARE INTENDED TO EXPRESS DESIGN INTENT FOR A PROTOTYPICAL STARBUCKS STORE (WHICH IS SUBJECT TO CHANGE AT ANYTIME) AND DO NOT REFLECT ACTUAL SITE CONDITIONS. NEITHER PARTY SHALL HAVE ANY OBLIGATION NOR LIABILITY TO THE OTHER (EXCEPT STATED ABOVE) UNTIL A WRITTEN AGREEMENT IS FULLY EXECUTED BY BOTH PARTIES.

ARCHITECT OF RECORD

**NORR**

ARCHITECTS PLANNERS  
325 N. LaSalle St. Suite 700 Chicago, IL 60654  
t 312.424.2400 f 312.424.2424 www.norr.com

ENGINEER OF RECORD



353 Marshall Avenue  
St. Louis, Missouri 63119  
Phone (314) 772-1762  
Fax (314) 373-3514

Engineering Consultants  
Mechanical - Electrical - Plumbing

Revision Schedule			
Rev	Date	By	Description

PROJECT NAME:  
**BRADY & FARWELL**  
PROJECT ADDRESS:  
**1677 N. FARWELL STREET  
MILWAUKEE, WI 53202  
MILWAUKEE COUNTY**

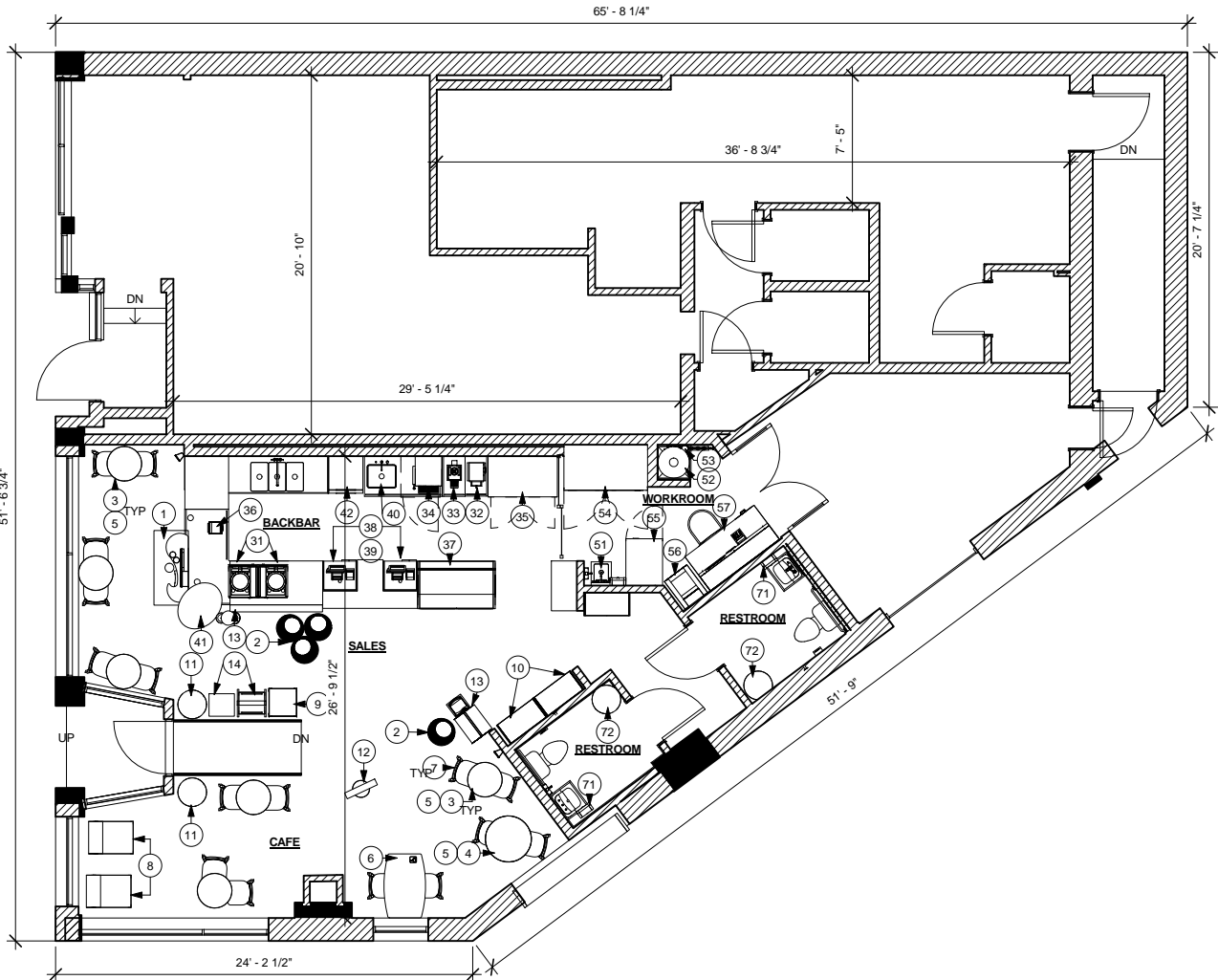
STORE #:  
PROJECT #:

CONCEPT:  
PALETTE:  
ISSUE DATE:  
DESIGN MANAGER:  
LEED® AP:  
PRODUCTION DESIGNER:  
CHECKED BY:

SHEET TITLE:  
**EXISTING EXTERIOR  
ELEVATIONS**

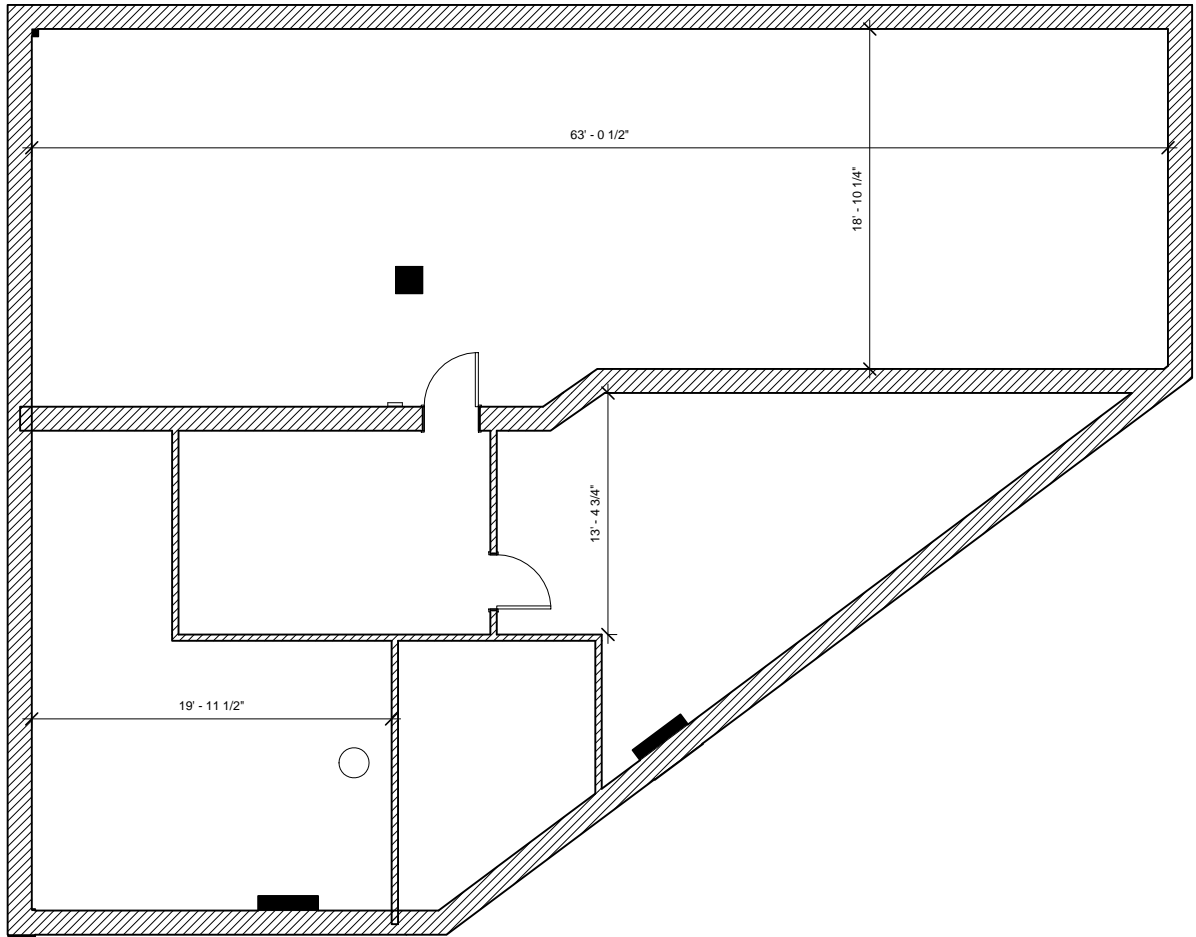
SCALE: 1/4" = 1'-0"

SHEET NUMBER:  
**EC-2B**



EC - EXISTING FLOOR PLAN

Scale: 3/16" = 1'-0"



EC - BASEMENT EXISTING FLOOR PLAN

Scale: 3/16" = 1'-0"

KEYNOTES - EXISTING FF&E

CAFE

1. CONDIMENT CART
2. MERCHANDISE BASKETS (4)
3. 24" ROUND TABLE TOP (5)
4. 32" ROUND TABLE TOP (1)
5. TABLE BASE (7)
6. ADA TABLE
7. CAFE CHAIR (16)
8. LOUNGE CHAIR
9. SHORT MERCH CUBE (1)
10. MERCH BAY (3)
11. TRASH
12. BANNER STAND
13. COFFEE PROMOTION
14. NEWS STAND
15. BEAN DISPLAY

BACKBAR

31. MASTRENA ESPRESSO MACHINE (2)
32. GRINDER
33. SHUTTLE (1)
34. DUAL BREWER
35. 2-DOOR U/C FRIDGE - 48IN (1)
36. CBS STATION W/ BLENDERS (1)
37. PASTRY CASE (XXIN)
38. POS STATION
39. SAFE (& BASE)
40. HAND SINK
41. HAND-OFF PLANE
42. SANITIZER

WORKROOM

51. HAND SINK - ADA
52. MOP SINK
53. WATER SYSTEM TYPE 1' W/ WATER HEATER
54. 3-DOOR FRIDGE (1)
55. 1-DOOR FREEZER (1)
56. IT RACK
57. MANAGER'S DESK

RESTROOM

71. PAPER TOWEL DISPENSER
72. TRASH



DESIGN DEVELOPMENT ONLY - NOT INTENDED FOR CONSTRUCTION



STARBUCKS COFFEE  
COMPANY  
2401 UTAH AVENUE SOUTH  
SEATTLE, WASHINGTON 98134  
(206) 318-1575

THESE DRAWINGS AND SPECIFICATIONS ARE CONFIDENTIAL AND SHALL REMAIN THE SOLE PROPERTY OF STARBUCKS CORPORATION, WHICH IS THE OWNER OF THE COPYRIGHT IN THIS WORK. THEY SHALL NOT BE REPRODUCED (IN WHOLE OR IN PART), SHARED WITH THIRD PARTIES OR USED IN ANY MANNER ON OTHER PROJECTS OR EXTENSIONS TO THIS PROJECT WITHOUT THE PRIOR WRITTEN CONSENT OF STARBUCKS CORPORATION. THESE DRAWINGS AND SPECIFICATIONS ARE INTENDED TO EXPRESS DESIGN INTENT FOR A PROTOTYPICAL STARBUCKS STORE (WHICH IS SUBJECT TO CHANGE AT ANYTIME) AND DO NOT REFLECT ACTUAL SITE CONDITIONS. NEITHER PARTY SHALL HAVE ANY OBLIGATION NOR LIABILITY TO THE OTHER (EXCEPT STATED ABOVE) UNTIL A WRITTEN AGREEMENT IS FULLY EXECUTED BY BOTH PARTIES.

ARCHITECT OF RECORD

**NORR**

ARCHITECTS PLANNERS  
325 N. LaSalle St. Suite 700 Chicago, IL 60654  
t 312.424.2400 f 312.424.2424 | www.norr.com

ENGINEER OF RECORD



Engineering Consultants  
Mechanical - Electrical - Plumbing

Revision Schedule				
Rev	Date	By	Description	

PROJECT NAME:  
**BRADY & FARWELL**  
PROJECT ADDRESS:  
**1677 N. FARWELL STREET  
MILWAUKEE, WI 53202  
MILWAUKEE COUNTY**

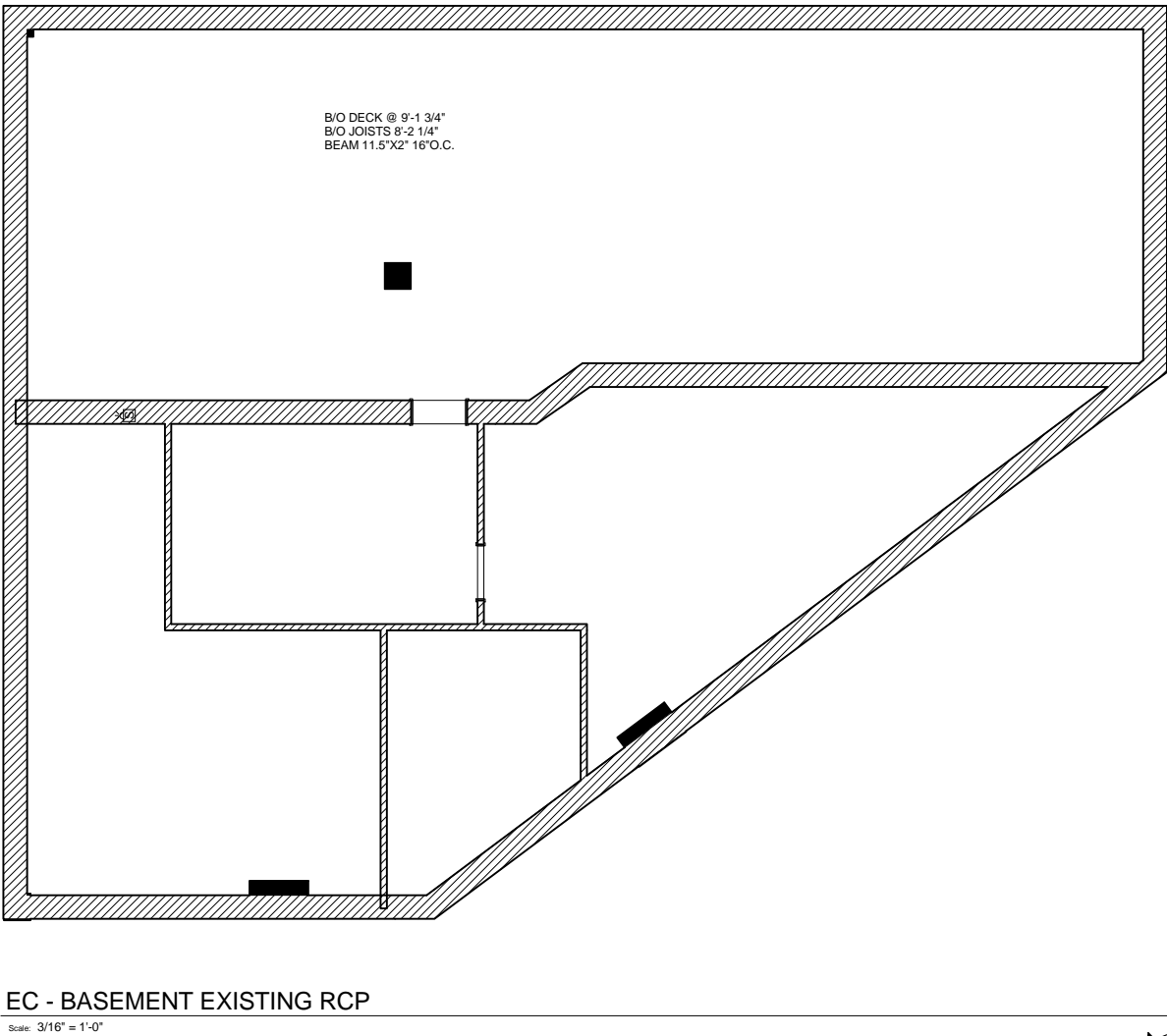
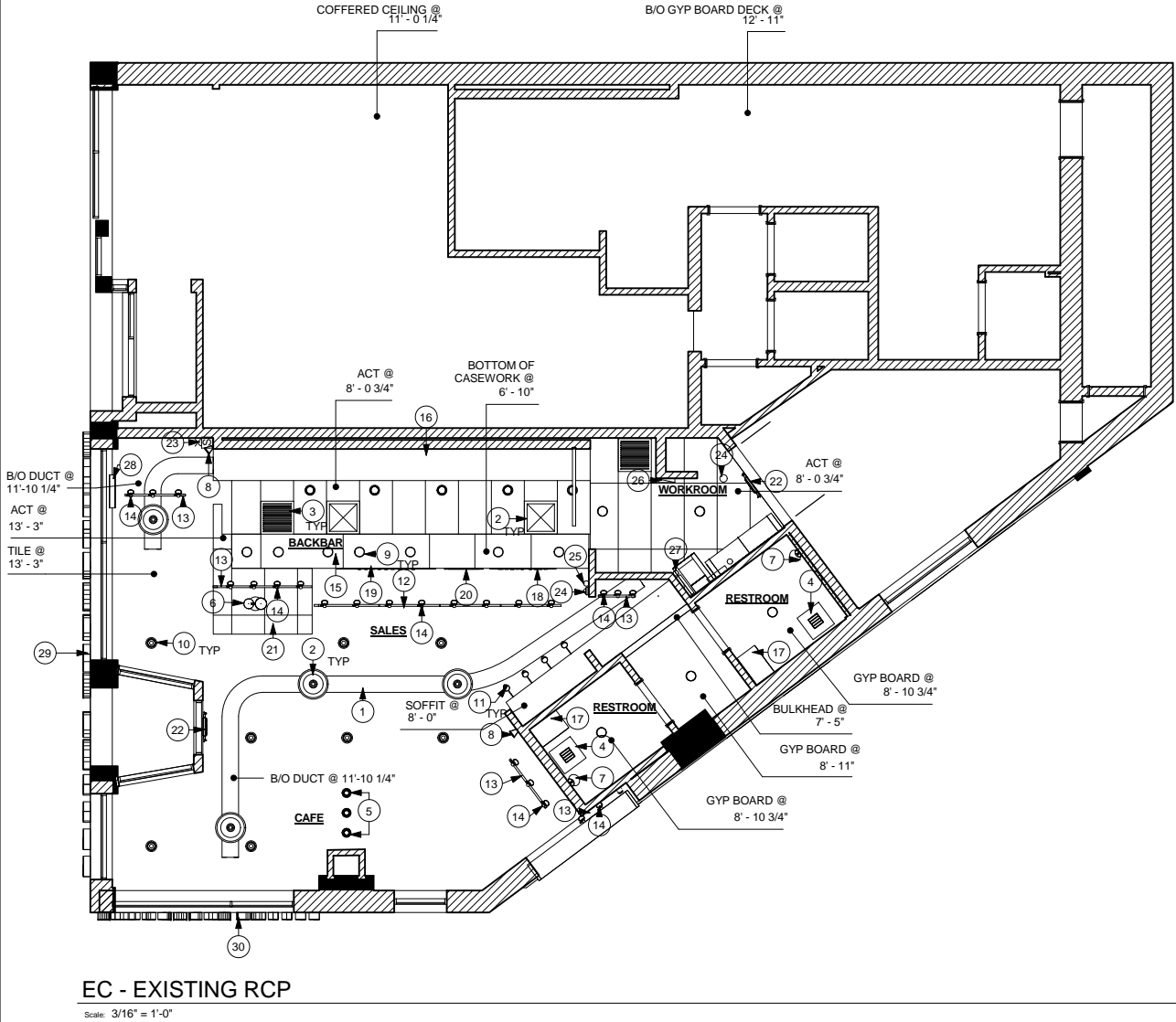
STORE #:  
PROJECT #:  
CONCEPT:  
PALETTE:  
ISSUE DATE:  
DESIGN MANAGER:  
LEED® AP:  
PRODUCTION DESIGNER:  
CHECKED BY:

SHEET TITLE:  
**EXISTING FLOOR PLAN**

SCALE: As indicated

SHEET NUMBER:  
**EC - 3A**

Y:\WI - Brady & Farwell - Milwaukeeexisting conditions drawings\Brady & Farwell - ECs.rvt 2/25/2013 4:12:09 PM



KEYNOTES - EXISTING RCP

1. HVAC DUCTWORK
2. HVAC SUPPLY DIFFUSER
3. HVAC RETURN DIFFUSER
4. EXHAUST
5. DECORATIVE PENDANT
6. HAND-OFF PENDANT
7. DECORATIVE WALL SCONCE
8. SPEAKER
9. RECESSED CAN LIGHT
10. PENDANT CAN LIGHT
11. GOOSENECK SCONCE
12. 16-FOOT TRACK - BLACK/WHITE - SURFACE MOUNTED / SUSPENDED)
13. 3-FOOT TRACK - BLACK/WHITE - SURFACE MOUNTED / SUSPENDED)
14. TRACK HEAD - BLACK/WHITE (24)
15. UPPER CABINETS - FRONTLINE
16. UPPER CABINETS - BACKLINE
17. UPPER CABINET - RESTROOM
18. 2-PANEL MENU BOARD
19. 3-PANEL MENU BOARD
20. DAILY OFFERINGS MENU BOARD
21. TRANSLUCENT HAND-OFF SOFFIT
22. LIGHTED EXIT SIGN (BLACK / RED)
23. FIRE STROBE (FS)
24. SECURITY CAMERA
25. SENSOR
26. FIRE ALARM PANEL
27. CO2 DETECTOR
28. INTERIOR SUSPENDED LOGO DISK - 24"
29. EXTERIOR WORDMARK - 20" - FLUSH MOUNTED
30. EXTERIOR WORDMARK - 10" - FLUSH MOUNTED

DESIGN DEVELOPMENT ONLY - NOT INTENDED FOR CONSTRUCTION



STARBUCKS COFFEE  
COMPANY  
2401 UTAH AVENUE SOUTH  
SEATTLE, WASHINGTON 98134  
(206) 318-1575

THESE DRAWINGS AND SPECIFICATIONS ARE CONFIDENTIAL AND SHALL REMAIN THE SOLE PROPERTY OF STARBUCKS CORPORATION, WHICH IS THE OWNER OF THE COPYRIGHT IN THIS WORK. THEY SHALL NOT BE REPRODUCED (IN WHOLE OR IN PART), SHARED WITH THIRD PARTIES OR USED IN ANY MANNER ON OTHER PROJECTS OR EXTENSIONS TO THIS PROJECT WITHOUT THE PRIOR WRITTEN CONSENT OF STARBUCKS CORPORATION. THESE DRAWINGS AND SPECIFICATIONS ARE INTENDED TO EXPRESS DESIGN INTENT FOR A PROTOTYPICAL STARBUCKS STORE (WHICH IS SUBJECT TO CHANGE AT ANYTIME) AND DO NOT REFLECT ACTUAL SITE CONDITIONS. NEITHER PARTY SHALL HAVE ANY OBLIGATION NOR LIABILITY TO THE OTHER (EXCEPT STATED ABOVE) UNTIL A WRITTEN AGREEMENT IS FULLY EXECUTED BY BOTH PARTIES.

ARCHITECT OF RECORD

**NORR**

ARCHITECTS PLANNERS  
325 N. LaSalle St. Suite 700 Chicago, IL 60654  
t 312.424.2400 f 312.424.2424 | www.norr.com

ENGINEER OF RECORD



353 Marshall Avenue  
St. Louis, Missouri 63119  
Phone (314) 772-1782  
Fax (314) 373-3514

Engineering Consultants  
Mechanical - Electrical - Plumbing

Revision Schedule				
Rev	Date	By	Description	

PROJECT NAME:  
**BRADY & FARWELL**  
PROJECT ADDRESS:  
**1677 N. FARWELL STREET  
MILWAUKEE, WI 53202  
MILWAUKEE COUNTY**

STORE #:  
PROJECT #:

CONCEPT:  
PALETTE:  
ISSUE DATE:  
DESIGN MANAGER:  
LEED® AP:  
PRODUCTION DESIGNER:  
CHECKED BY:

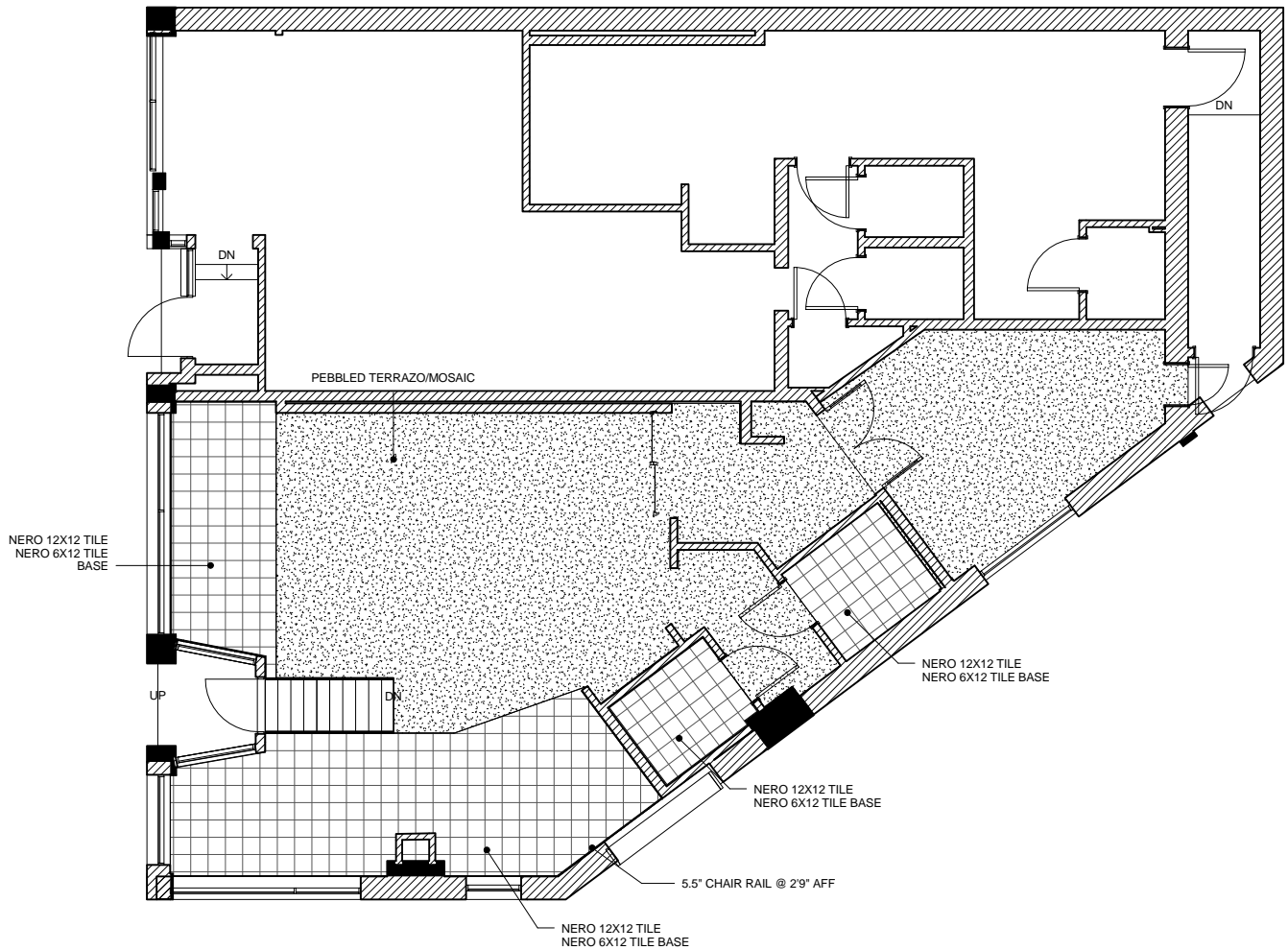
SHEET TITLE:  
**EXISTING REFLECTED  
CEILING PLAN**

SCALE: As indicated

SHEET NUMBER:

EC - 4A

2/25/2013 4:12:10 PM Y:\WI - Brady & Farwell - Milwaukee\existing conditions\drawings\Brady & Farwell - ECs.rvt



EC - EXISTING FLOOR FINISH PLAN

Scale: 3/16" = 1'-0"

KEYNOTES - EXISTING FLOOR FINISH

- 1. FLUSH ACCESS PANEL
- 2. FLOOR SINK
- 3. FLOOR/HUB DRAIN
- 4. CLEAN OUT
- 5. FILLED FLOOR DRAIN
- 6. WASTELINE PENETRATION
- 7. GREASE TRAP
- 8. ELECTRICAL FLOOR OUTLET
- 9. ELECTRICAL WALL OUTLET
- 10. UNEVEN FLOOR - STEEP TRANSITION



DESIGN DEVELOPMENT ONLY - NOT INTENDED FOR CONSTRUCTION



STARBUCKS COFFEE  
COMPANY  
2401 UTAH AVENUE SOUTH  
SEATTLE, WASHINGTON 98134  
(206) 318-1575

THESE DRAWINGS AND SPECIFICATIONS ARE CONFIDENTIAL AND SHALL REMAIN THE SOLE PROPERTY OF STARBUCKS CORPORATION, WHICH IS THE OWNER OF THE COPYRIGHT IN THIS WORK. THEY SHALL NOT BE REPRODUCED (IN WHOLE OR IN PART), SHARED WITH THIRD PARTIES OR USED IN ANY MANNER ON OTHER PROJECTS OR EXTENSIONS TO THIS PROJECT WITHOUT THE PRIOR WRITTEN CONSENT OF STARBUCKS CORPORATION. THESE DRAWINGS AND SPECIFICATIONS ARE INTENDED TO EXPRESS DESIGN INTENT FOR A PROTOTYPICAL STARBUCKS STORE (WHICH IS SUBJECT TO CHANGE AT ANYTIME) AND DO NOT REFLECT ACTUAL SITE CONDITIONS. NEITHER PARTY SHALL HAVE ANY OBLIGATION NOR LIABILITY TO THE OTHER (EXCEPT STATED ABOVE) UNTIL A WRITTEN AGREEMENT IS FULLY EXECUTED BY BOTH PARTIES.

ARCHITECT OF RECORD

**NORR**  
ARCHITECTS PLANNERS

325 N. LaSalle St. Suite 700 Chicago, IL 60654  
t 312.424.2400 f 312.424.2424 | www.norr.com

ENGINEER OF RECORD



353 Marshall Avenue  
St. Louis, Missouri 63119  
Phone (314) 772-1782  
Fax (314) 373-3514

Engineering Consultants  
Mechanical - Electrical - Plumbing

Revision Schedule			
Rev	Date	By	Description

PROJECT NAME:  
**BRADY & FARWELL**  
PROJECT ADDRESS:  
**1677 N. FARWELL STREET  
MILWAUKEE, WI 53202  
MILWAUKEE COUNTY**

STORE #:  
PROJECT #:

CONCEPT:  
PALETTE:  
ISSUE DATE:  
DESIGN MANAGER:  
LEED® AP:  
PRODUCTION DESIGNER:  
CHECKED BY:

SHEET TITLE:  
**EXISTING FLOOR FINISH  
PLAN**

SCALE: As indicated

SHEET NUMBER:  
**EC - 5**