

N.E. 1/4 SEC. 20, T.6N., R.22E.

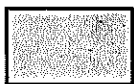
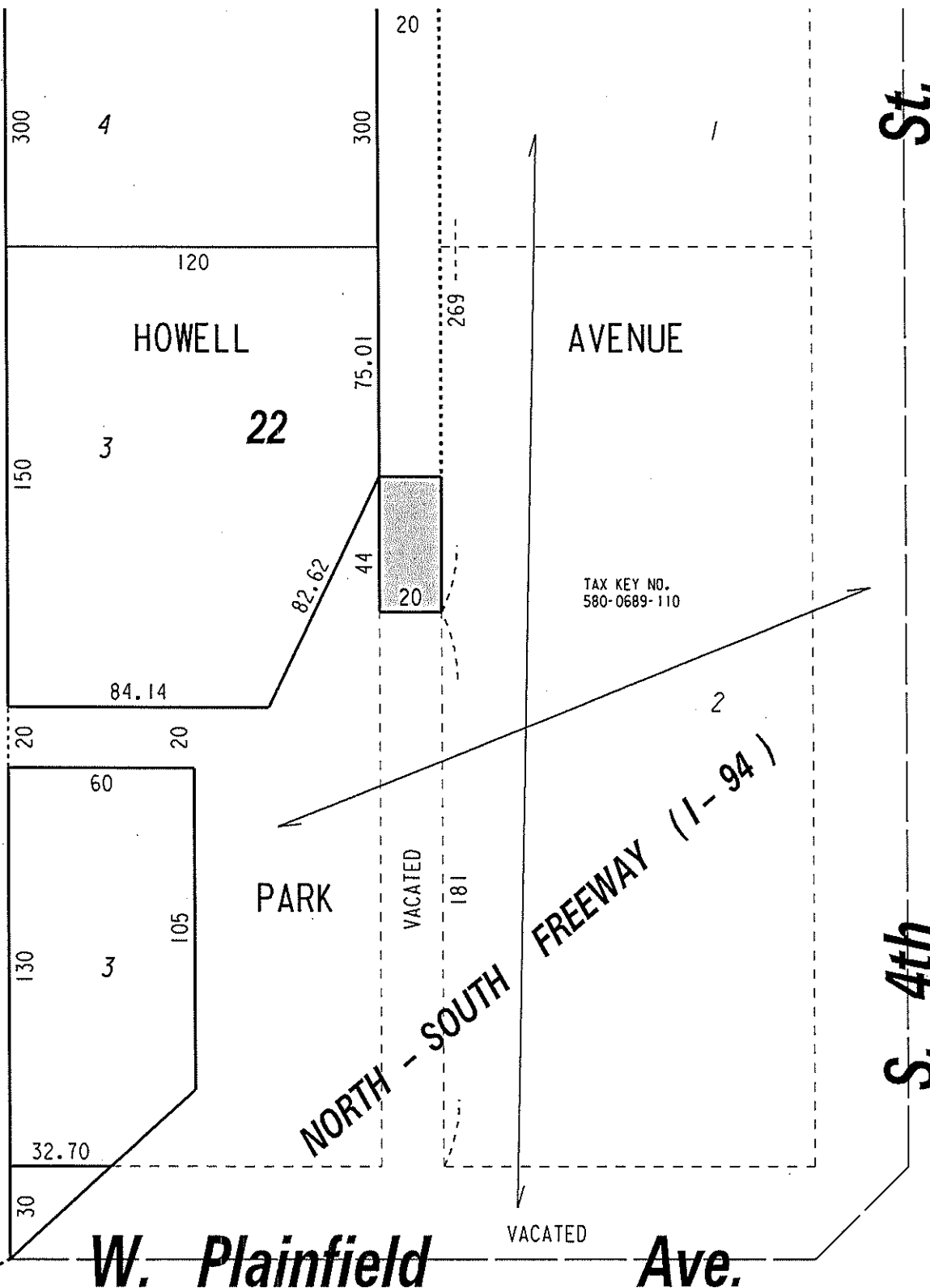
580

(W. Waterford Ave.)

St.

(60' R.O.W.)

S. 5th



PORTION OF PUBLIC
ALLEY PROPOSED
TO BE VACATED

EXHIBIT "A"

FILE NO. 130991

INFRASTRUCTURE SERVICES DIVISION

MILWAUKEE, WISCONSIN

ASSIGNED TO: W.E. FUCHS

CH'K'D. BY: W.E. FUCHS

DRAWN BY: W.E.F.

DATE: NOV. 15, 2013

PROJECT/GRANT NO.: WK52337339

SCALE: 1" = 50'

APPROVED BY:

Marcia Cornnell

CENTRAL DRAFTING & RECORDS MANAGER

[Signature]
CITY ENGINEER