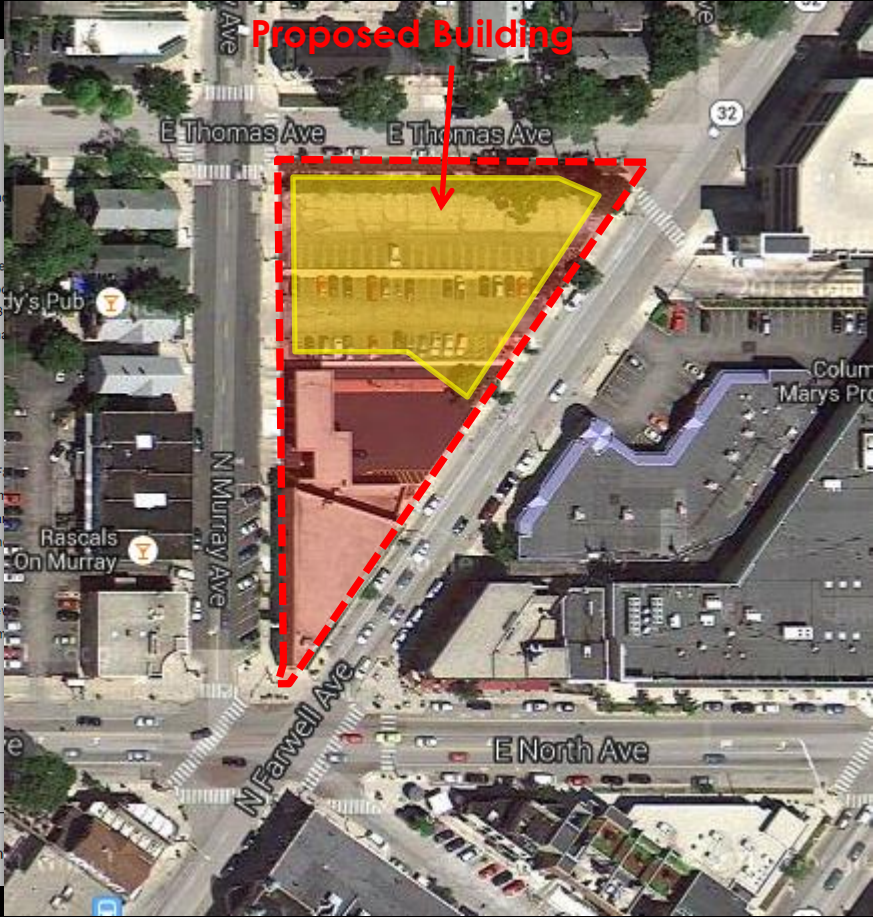
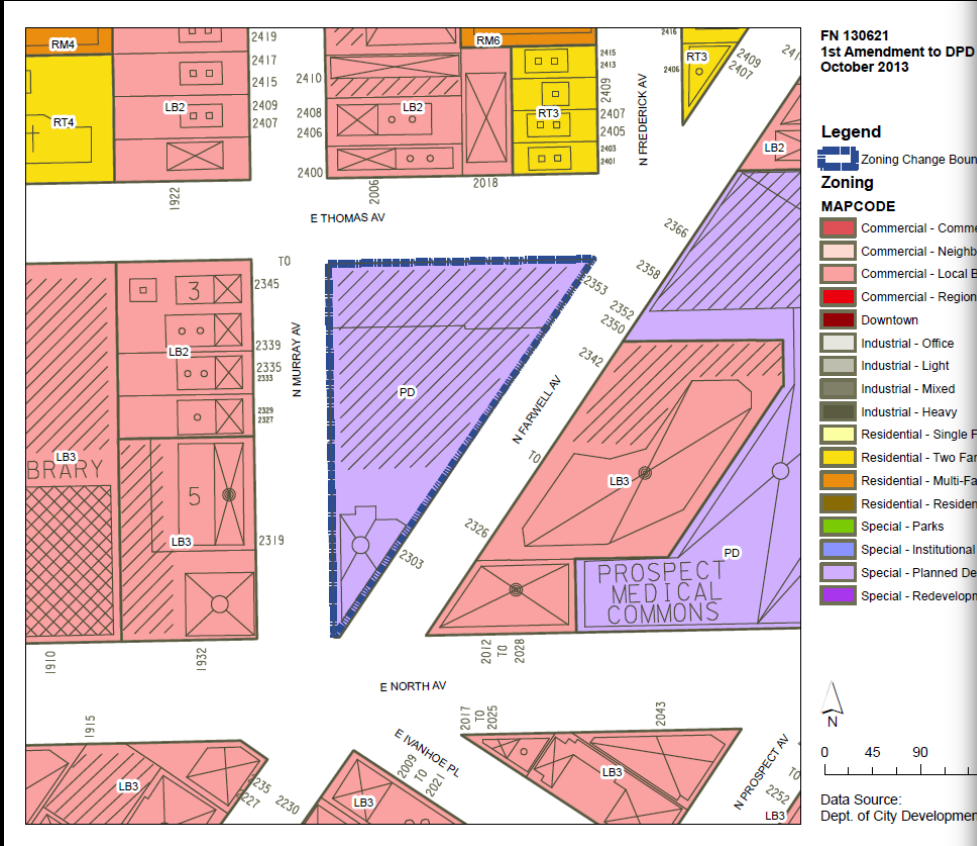


File No. 130621. An ordinance relating to the First Amendment to a Detailed Planned Development known as Greenwich Park Apartments, for building site revisions, on land located north of East North Avenue and west of North Farwell Avenue, in the **3<sup>rd</sup> Aldermanic District**. This zoning change was requested by Mercy Housing Lakefront, and would permit changes to the site plan, building elevations, and unit parking count for the previously approved development at 2353 and part of 2303 North Farwell avenue. The proposed development would occur in two phases.



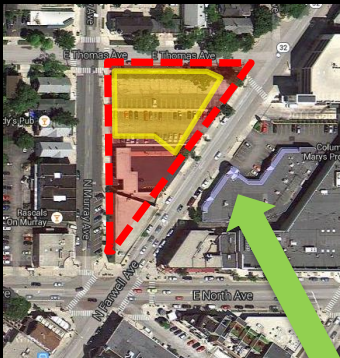
Context Photos



Southeast corner of the site



Northeast corner of the site





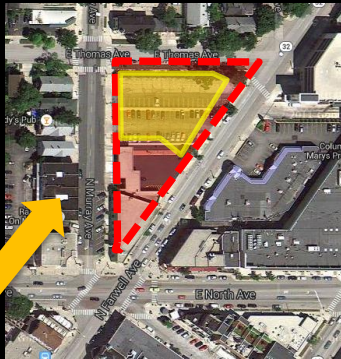
Context Photos



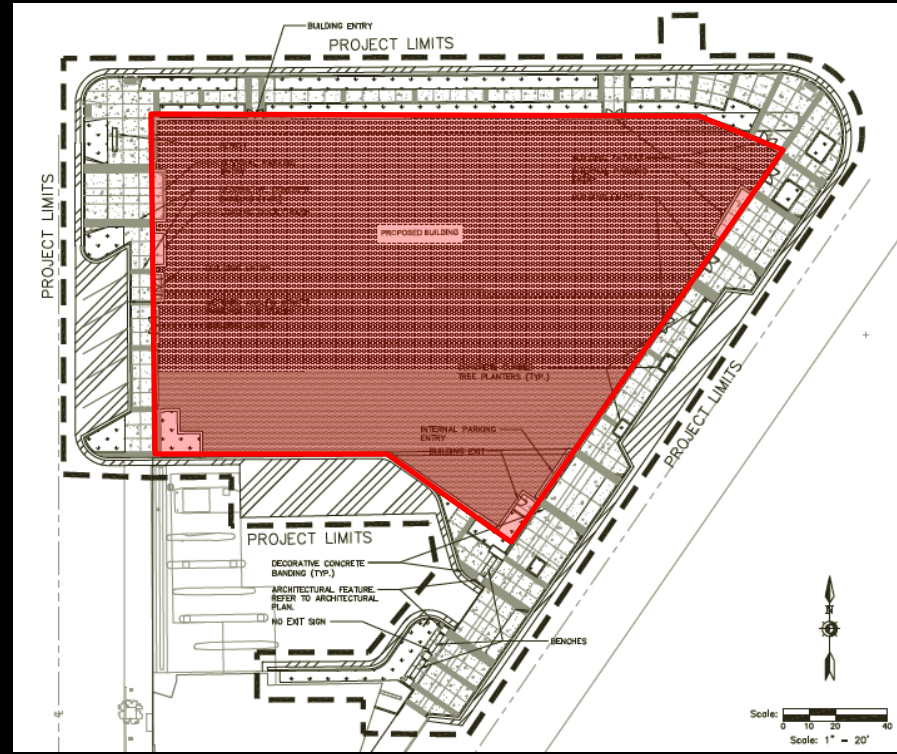
Northwest corner of the site



Southwest corner of the site



## Proposed site plan Phase 1&2

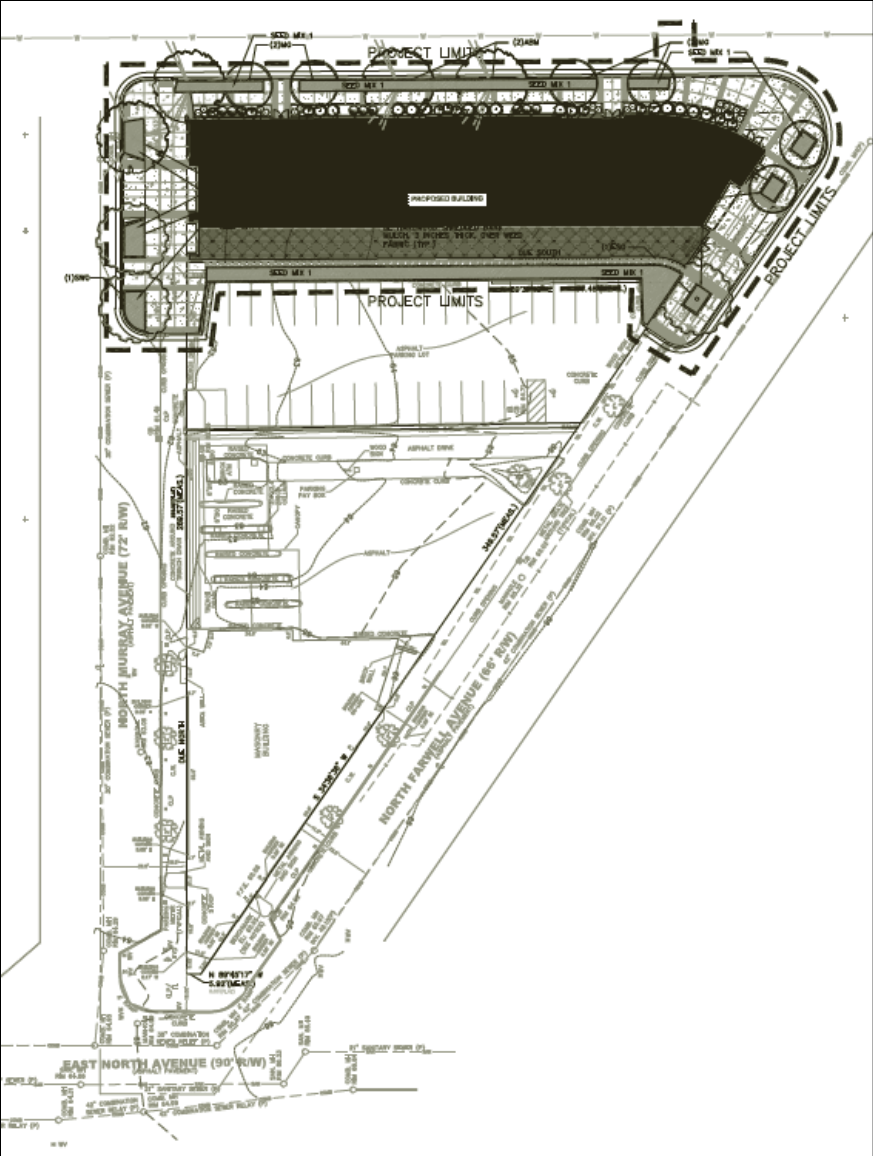




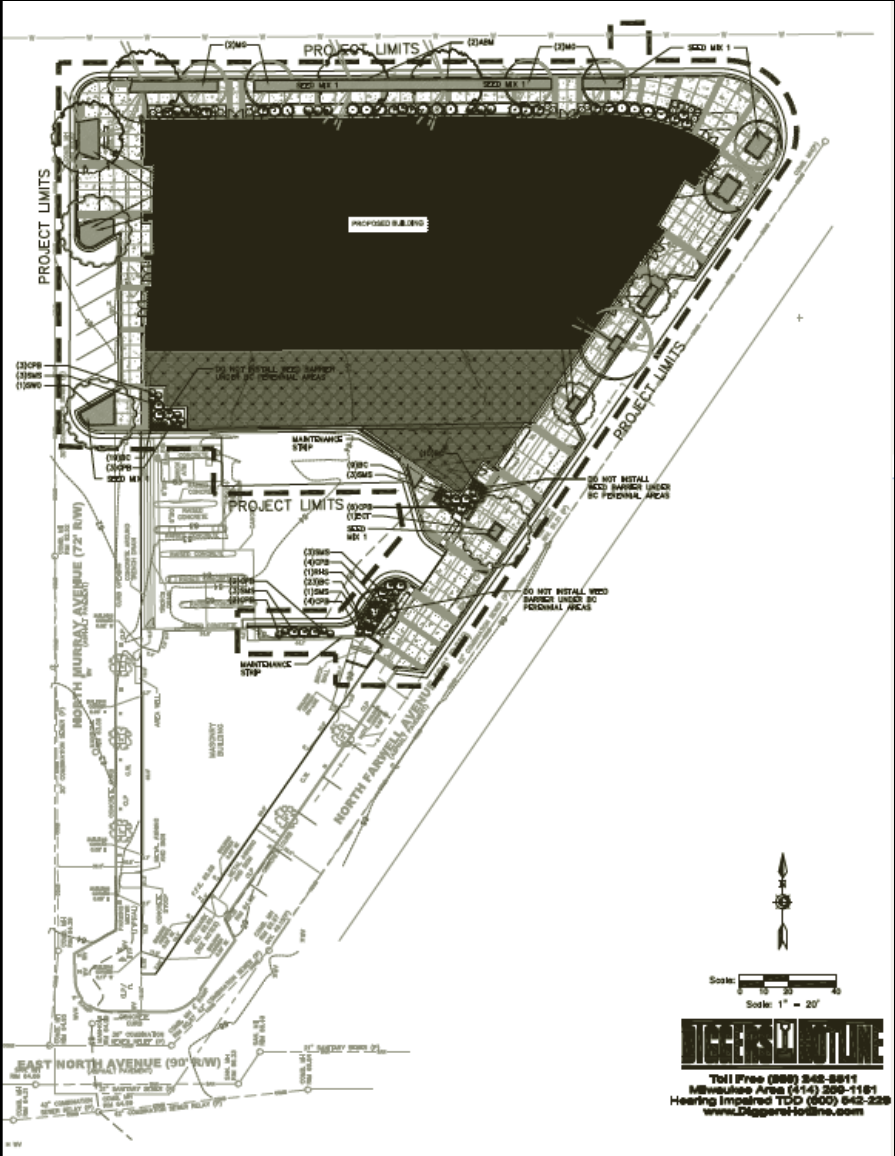
[illegible][illegible]

## Phase 2

# Landscape Plan



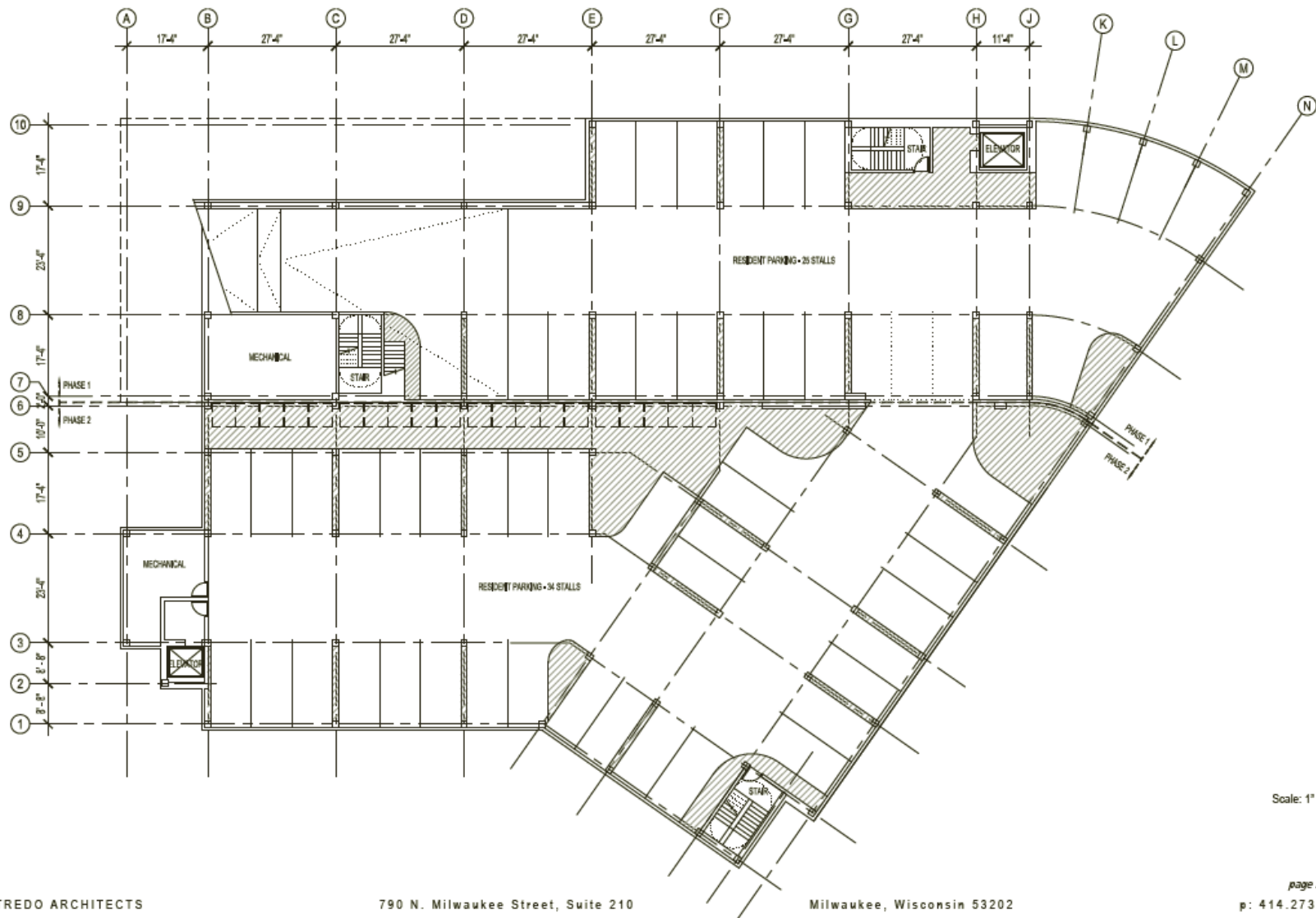
Phase 1



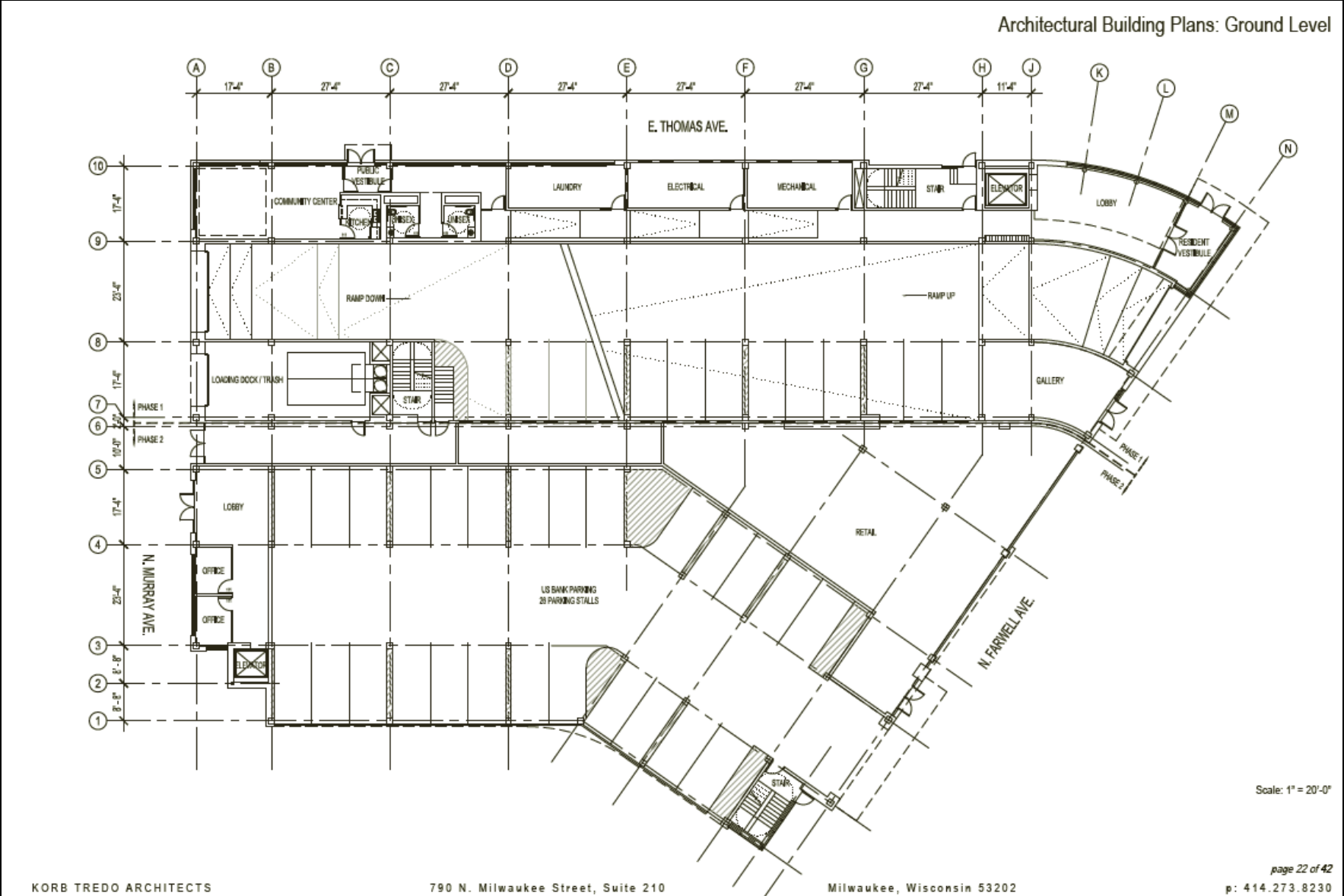
Phase 2

Floor Plan- Lower Level

Architectural Building Plans: Lower Level

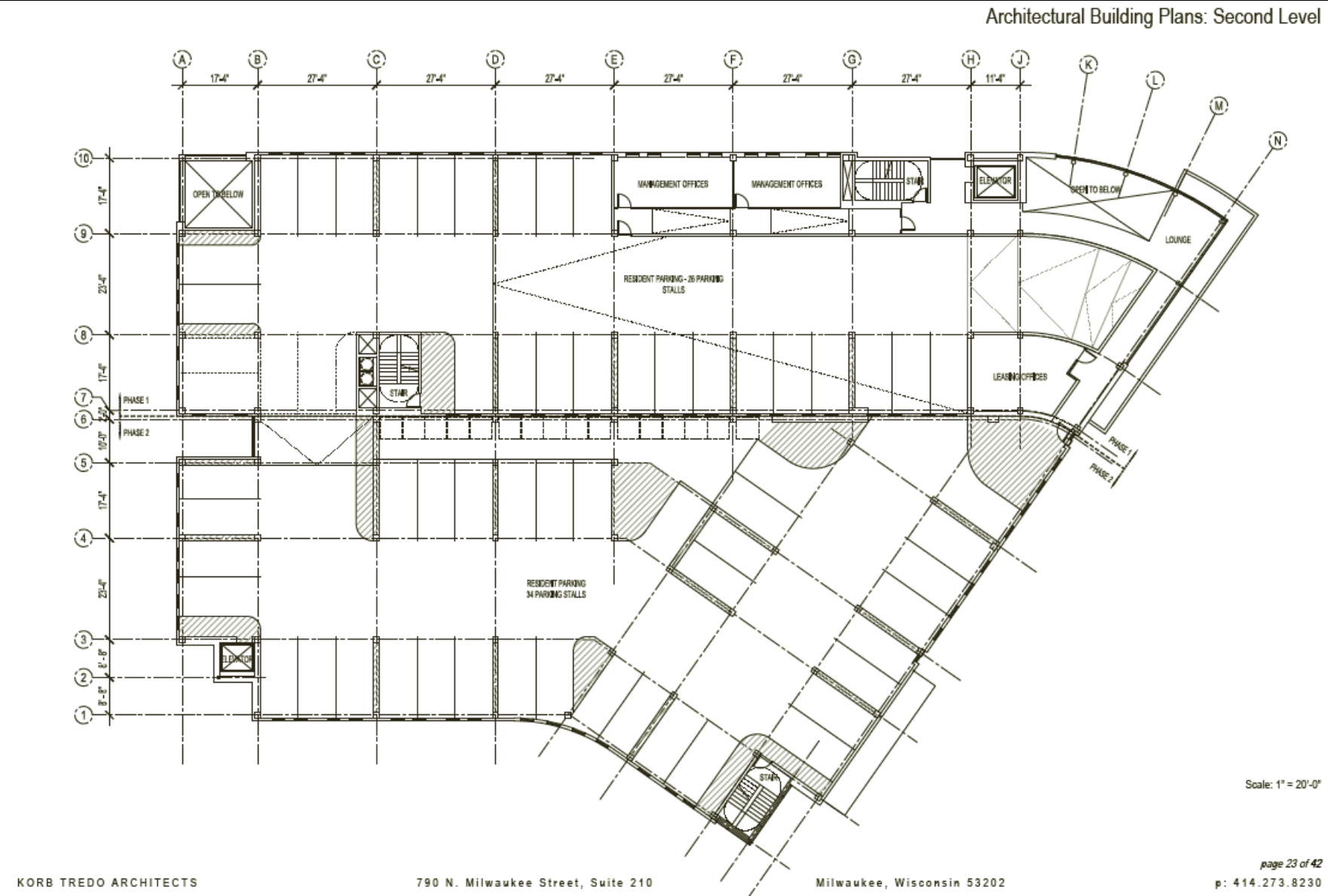


# Floor Plan- Ground Level

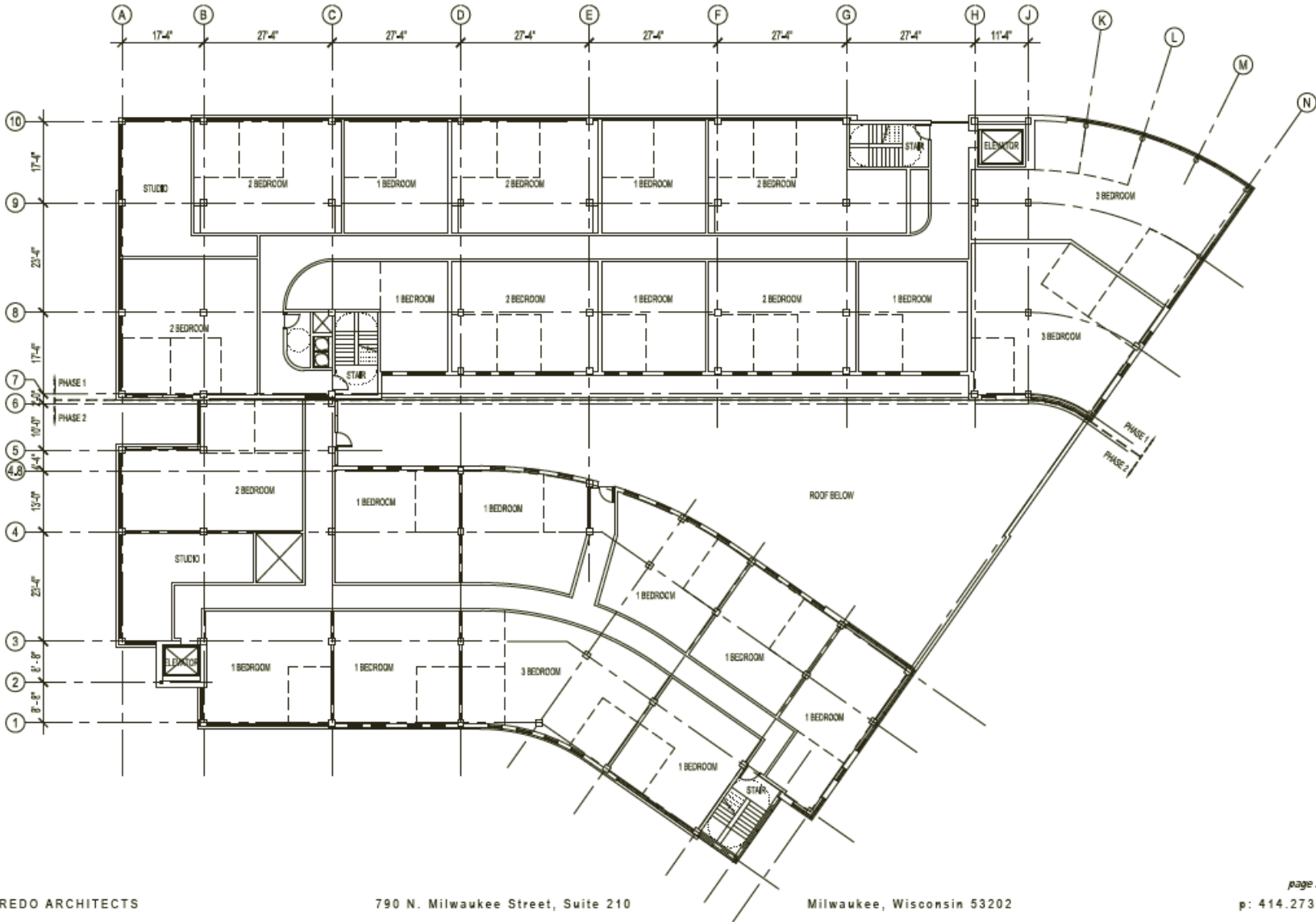




# Floor Plan- Second Level

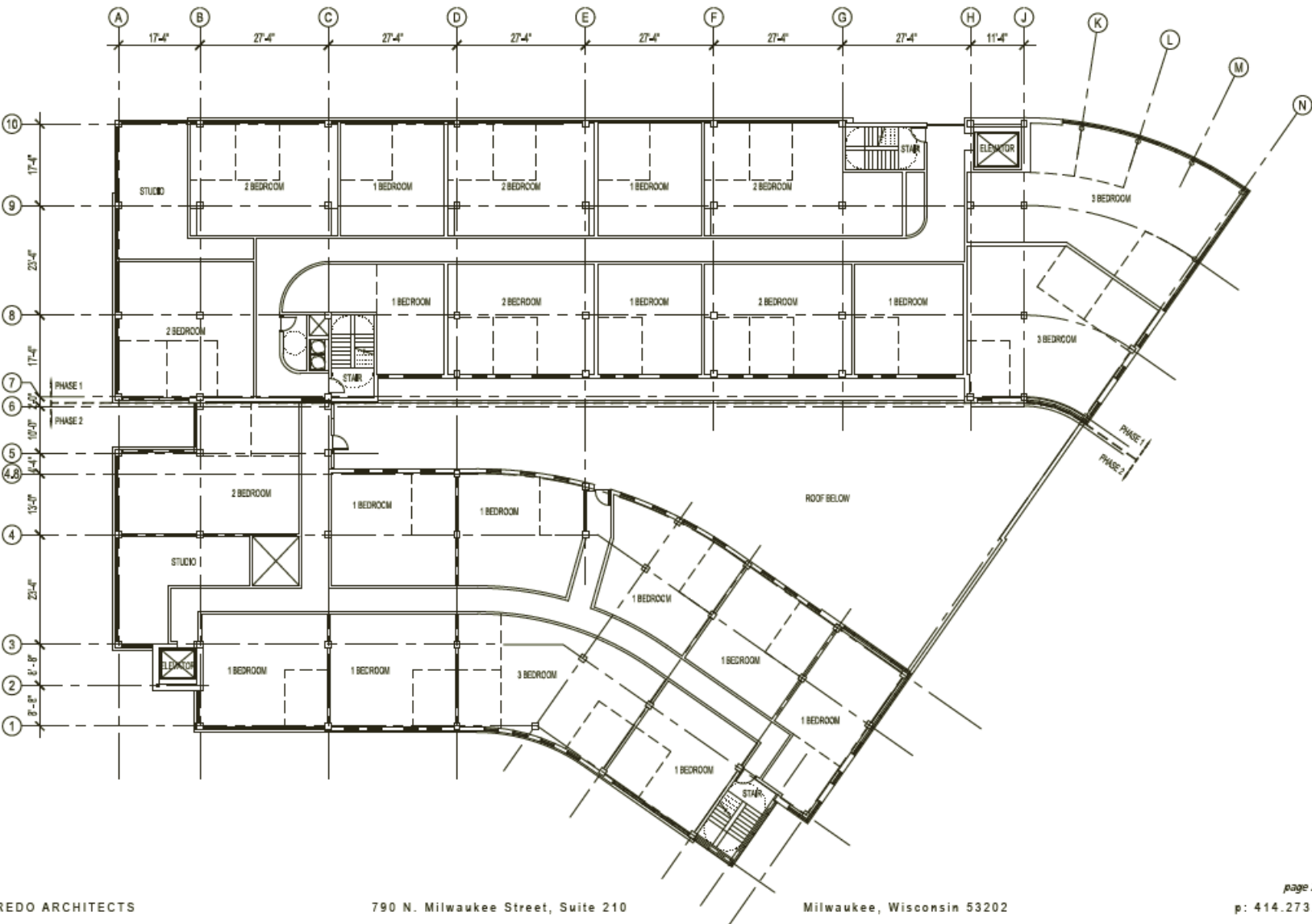


Floor Plan- Third Level



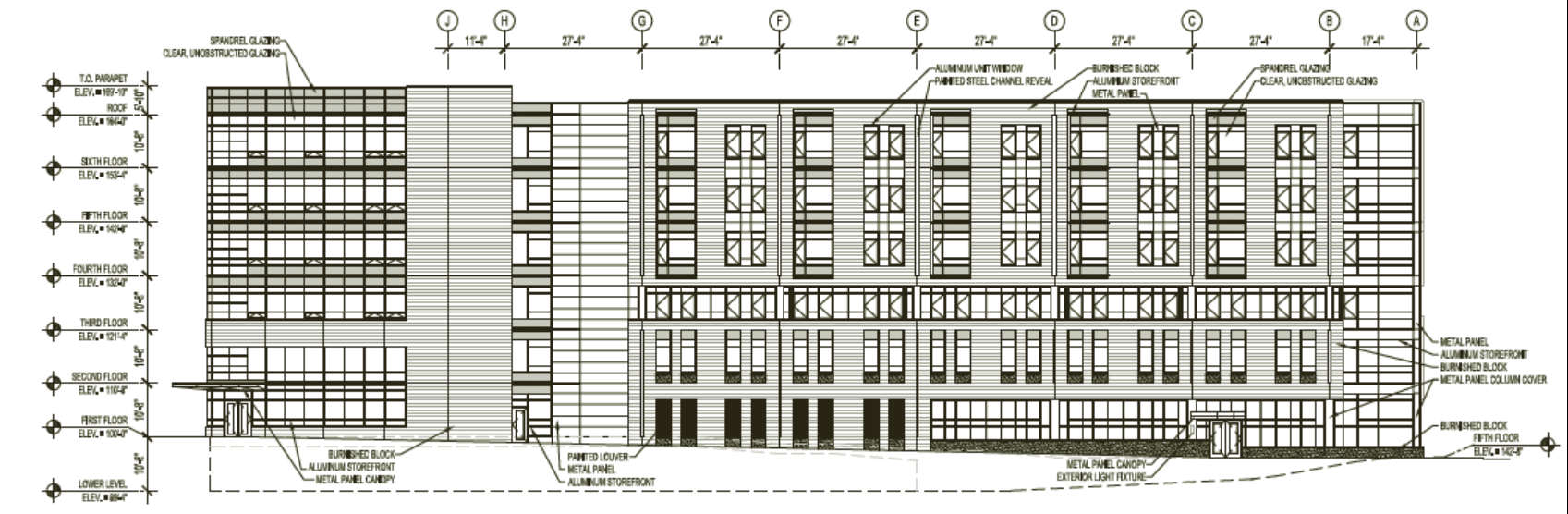
# Floor Plan- Fourth-sixth Levels

Architectural Building Plans: Fourth - Sixth Level

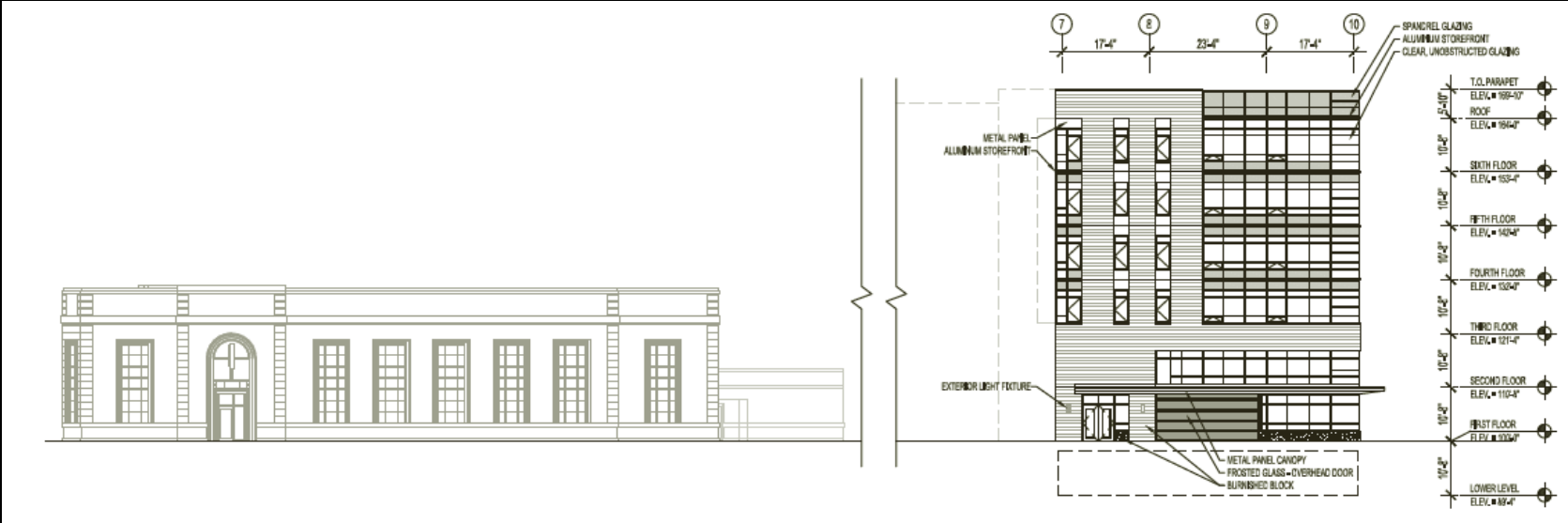




# Building Elevations – Phase 1



North (Thomas) Elevation

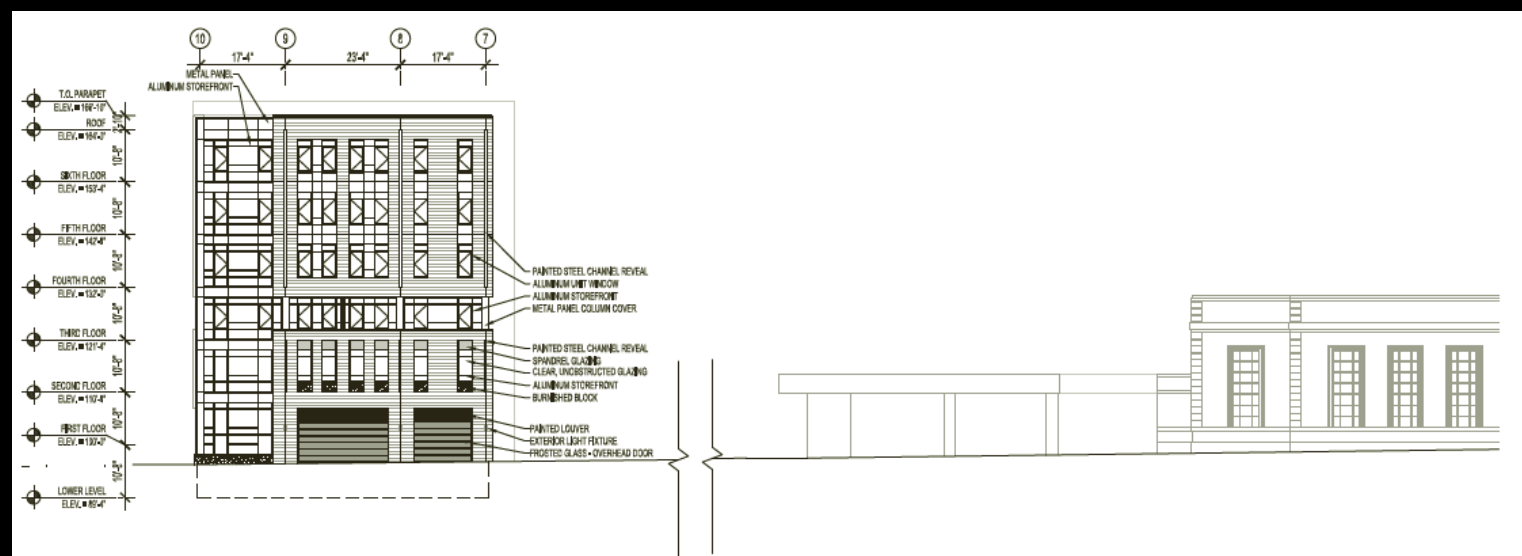


East (Farwell) Elevation

# Building Elevations – Phase 1

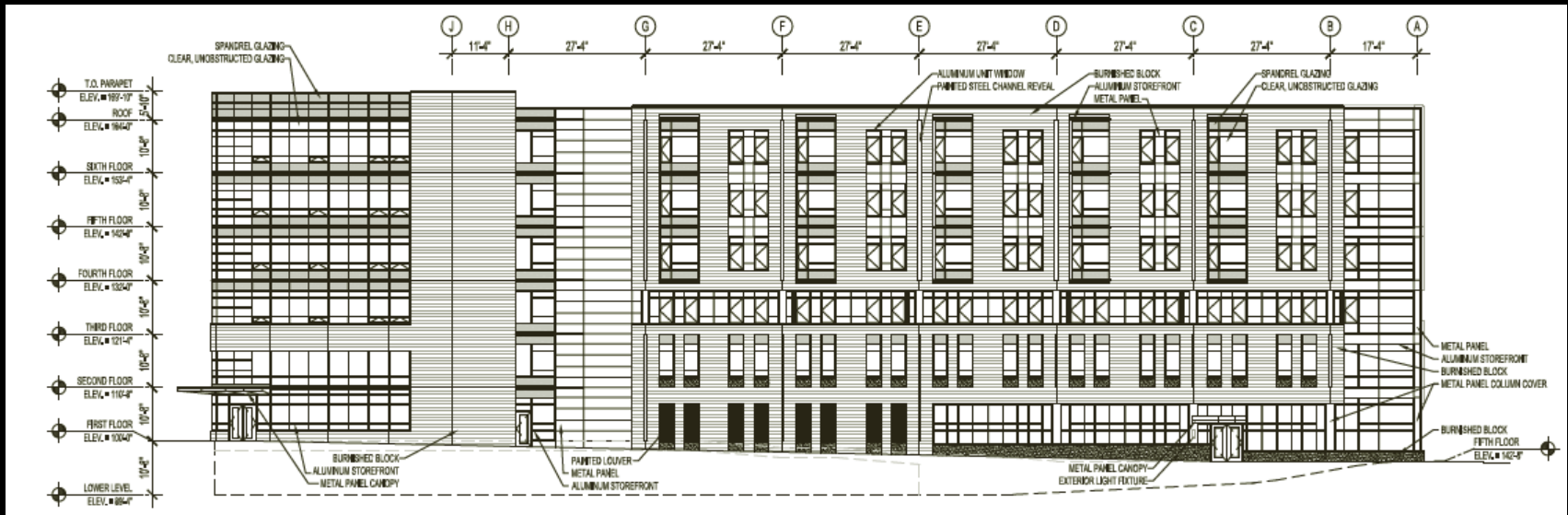


South (toward US Bank) Elevation

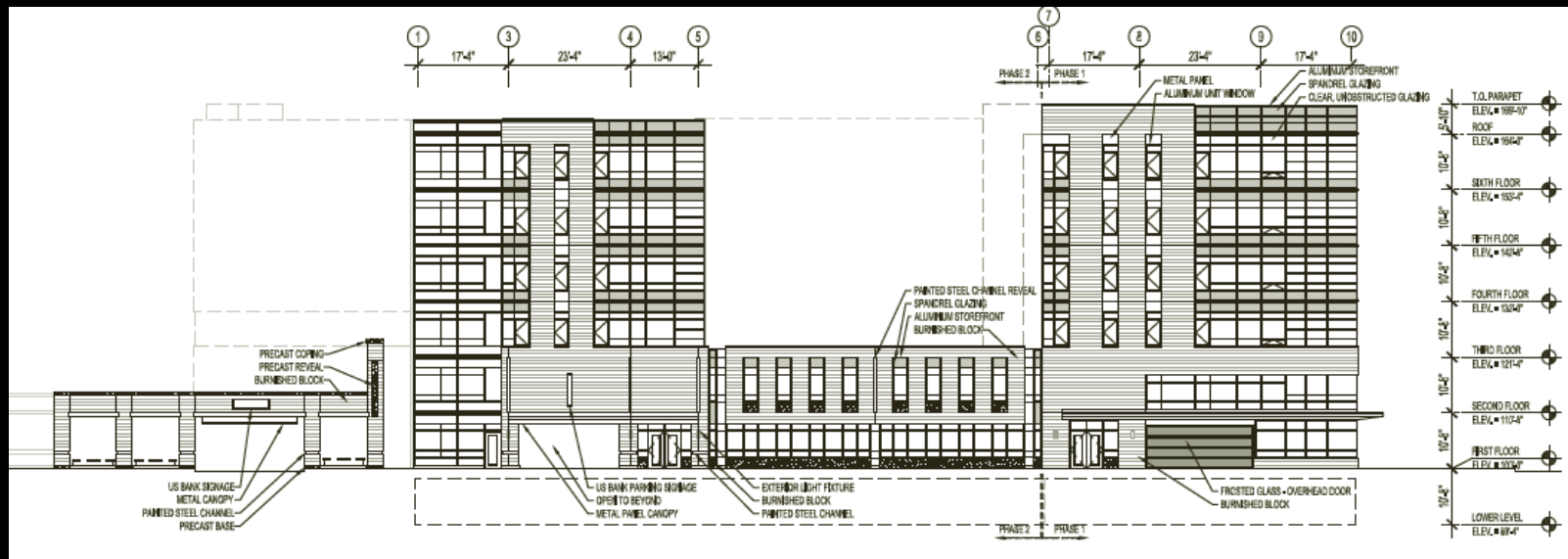


West (Murray) Elevation

## Building Elevations – Phases 1 & 2; full build-out



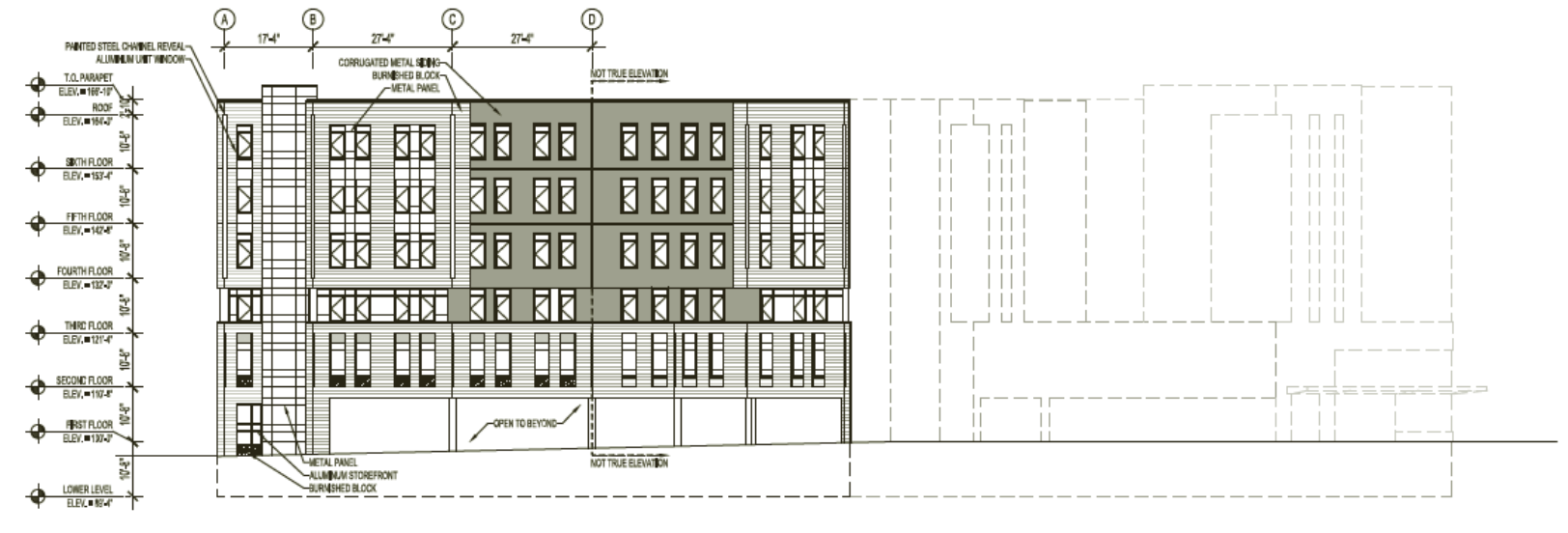
## North (Thomas) Elevation



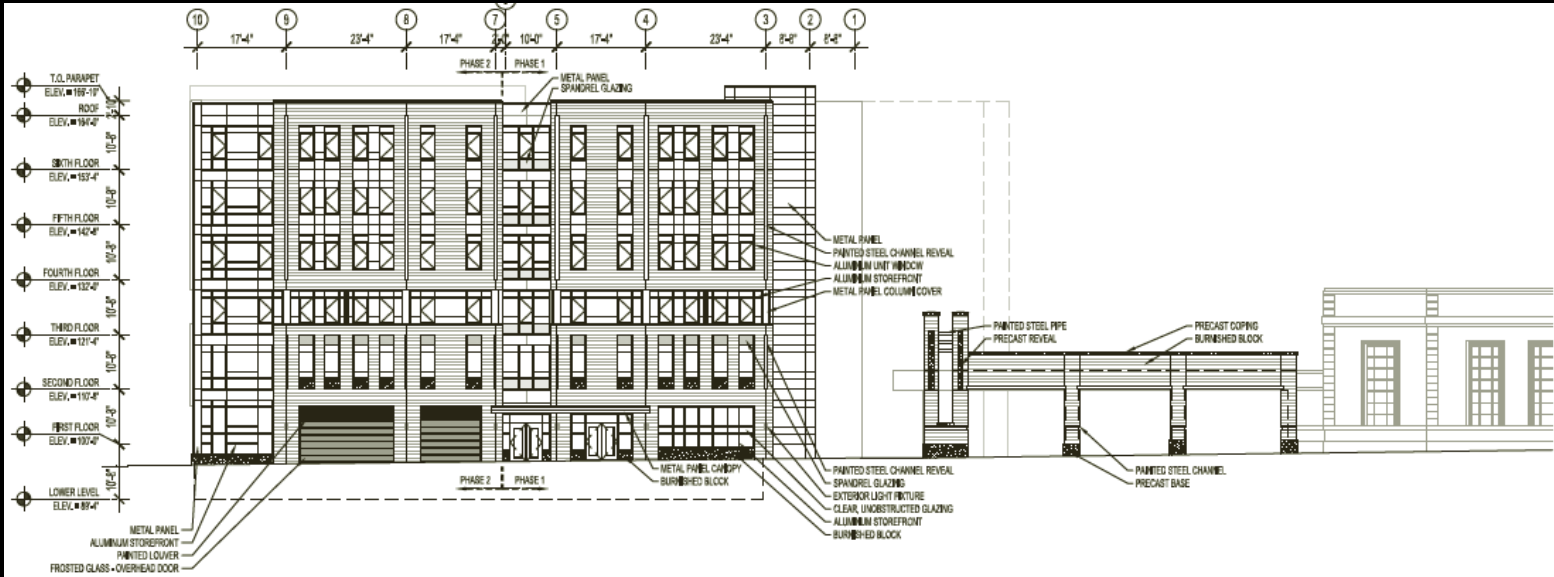
## East (Farwell) Elevation



# Building Elevations – Phases 1 & 2



South (toward US Bank) Elevation



West (Murray) Elevation

Renderings- Aerial (Phase 1&2)



# Renderings - Northeast Corner (Farwell and Thomas, looking down Farwell)



Previously approved



Proposed (phase 1&2)



# Renderings - Northeast Corner (Farwell and Thomas, looking down Thomas)



Previously approved



Proposed (Phase 1 & 2)

# Renderings - Northeast Corner



Phase 1



Phase 2

## Renderings - Northwest Corner (Thomas and Murray)



Previously Approved



Proposed (Phase 1&2)



Renderings - Northwest Corner (Thomas and Murray)



Phase 1



Phase 2

## Renderings- Southeast Corner



Previously  
approved



Proposed  
(phase 1&2)



# Renderings - Southeast Corner (North and Farwell, looking up Farwell)

Phase 1



Phase 2





## Renderings - Southwest Corner (Murray and North, looking up and down Murray)



Previously approved  
Looking toward North Ave, down  
Murray



Proposed (Phase 1 & 2)  
Looking toward Thomas Av, up  
Murray

# Renderings - Southwest Corner (Murray and North, looking up Murray)

Phase 1



Phase 2

