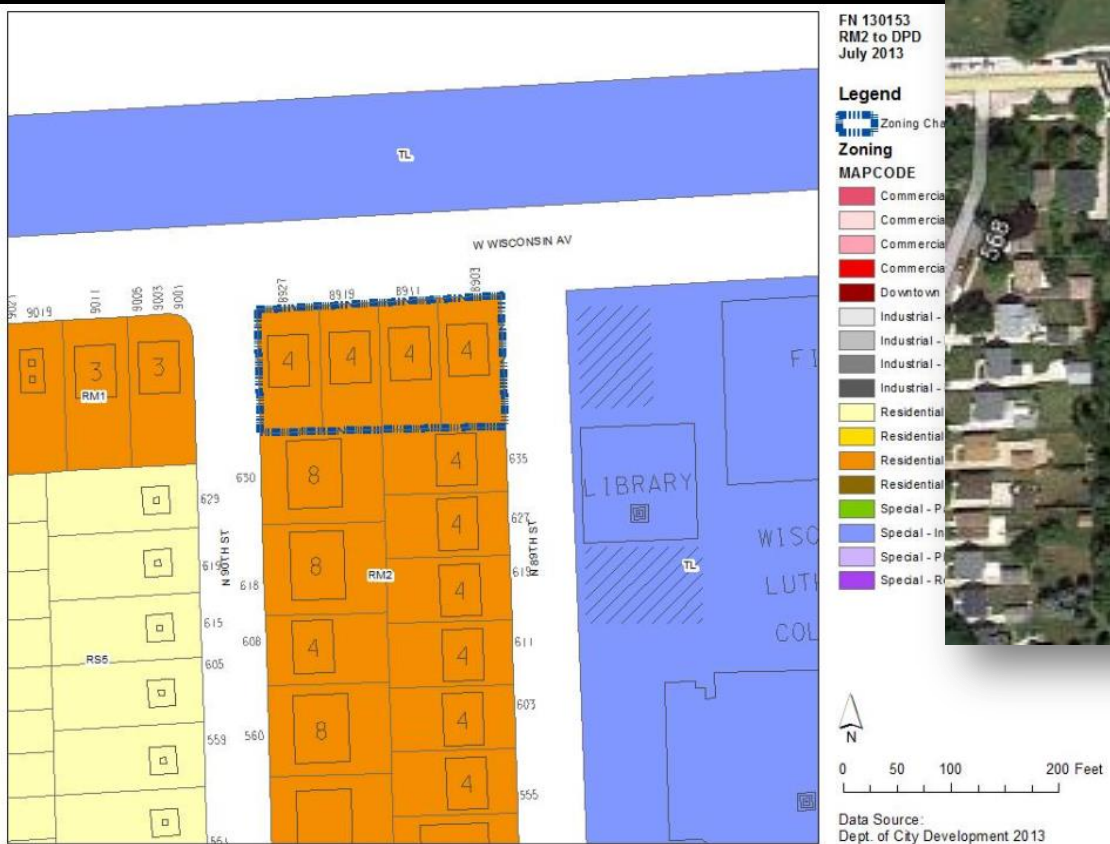


File No. 130153. An ordinance relating to the change in zoning from Multi-Family Residential to Detailed Planned Development, for a mixed-use building, on land located on the south side of West Wisconsin Avenue, west of North 89th Street, in the **10th Aldermanic District**. This zoning change was requested by Wisconsin Lutheran College, and would permit a six-story, mixed-use building with residences above parking and classroom space.



Site Context



The site, viewed from the northwest



View from the site looking north

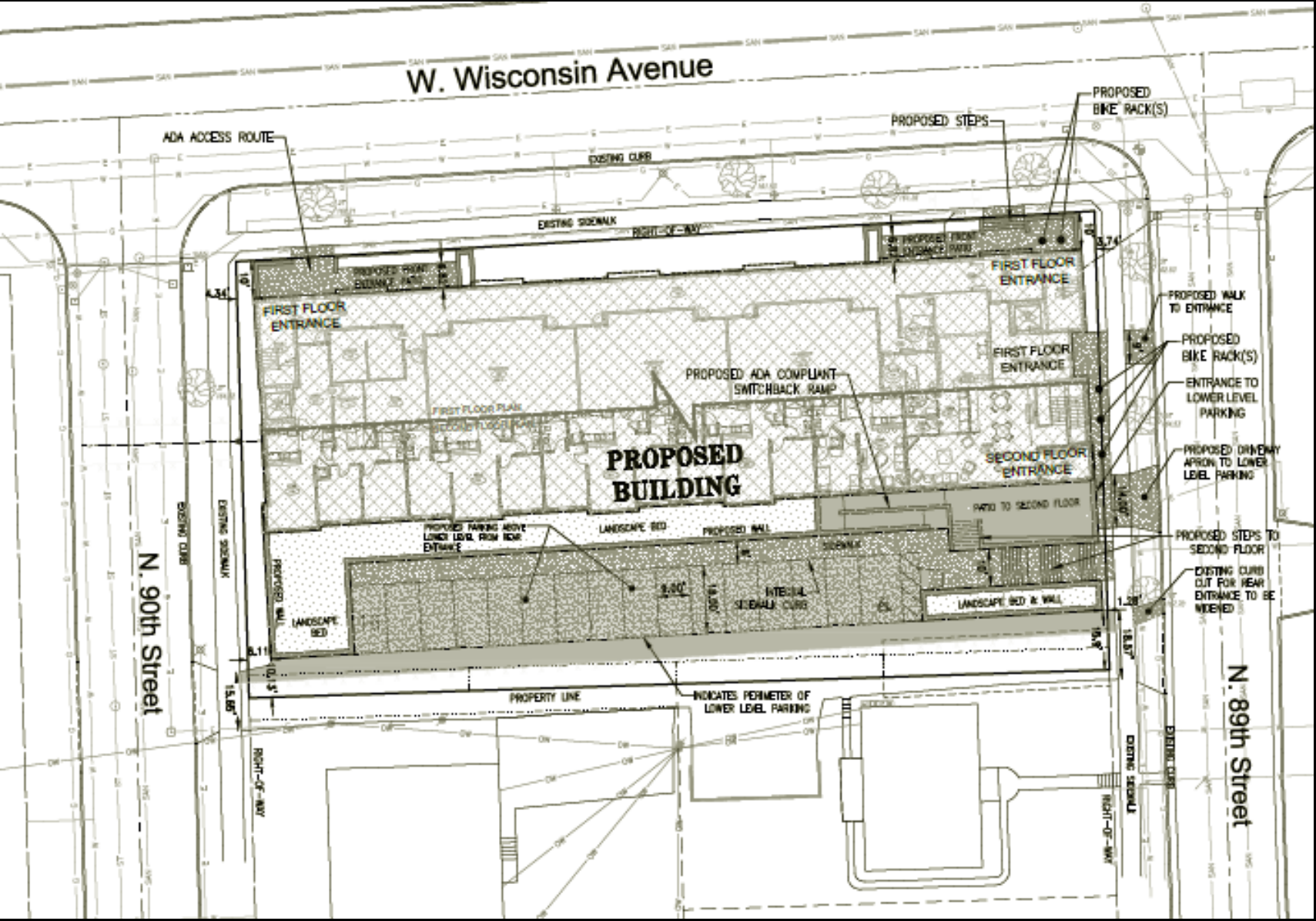


Looking south from southwest corner

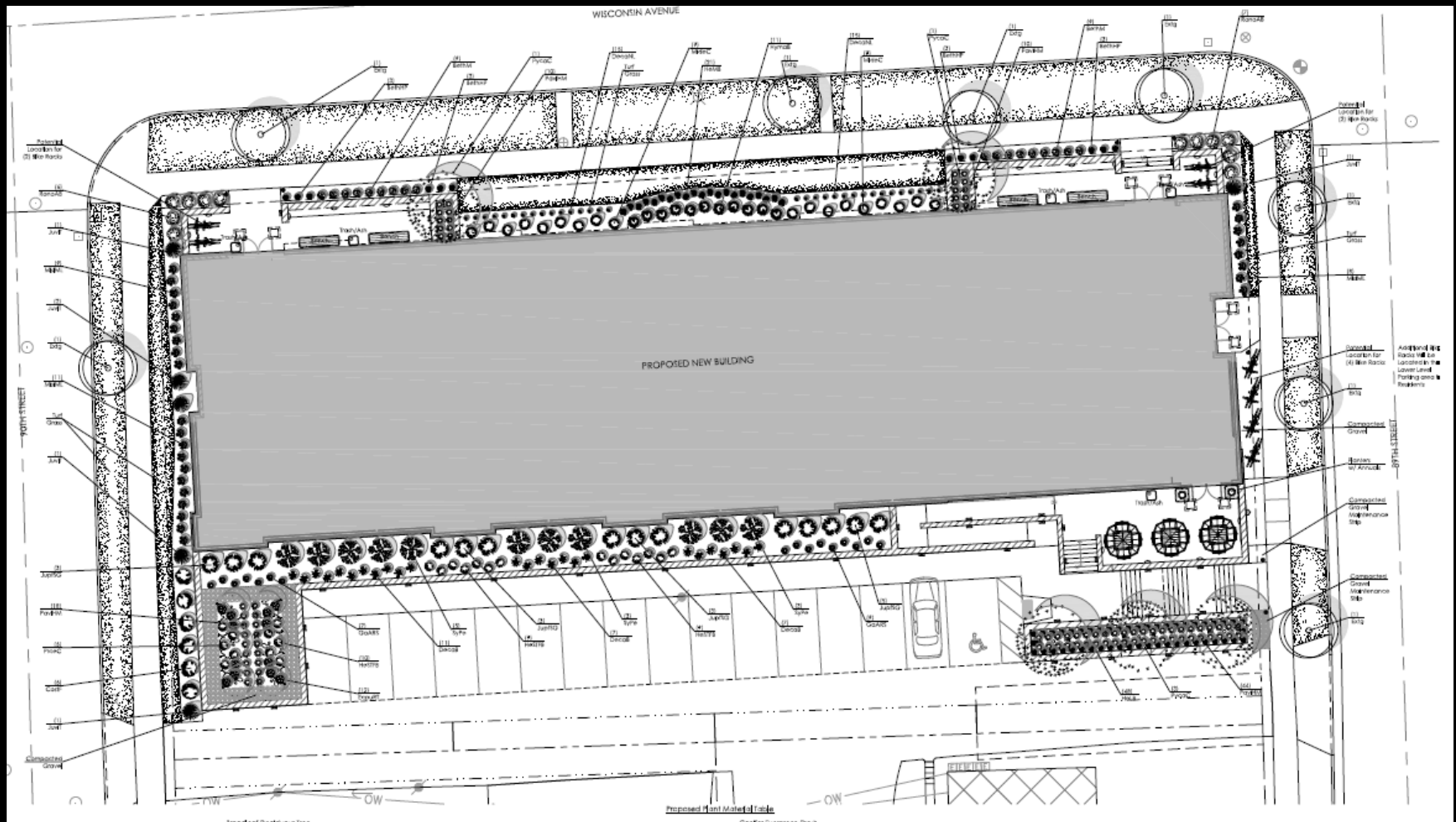


Looking northeast from southeast corner

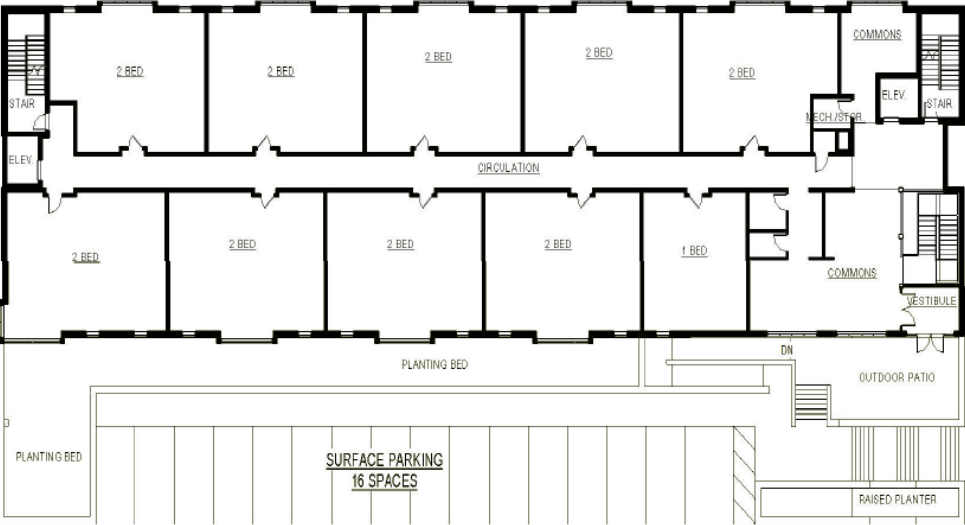
Site Plan



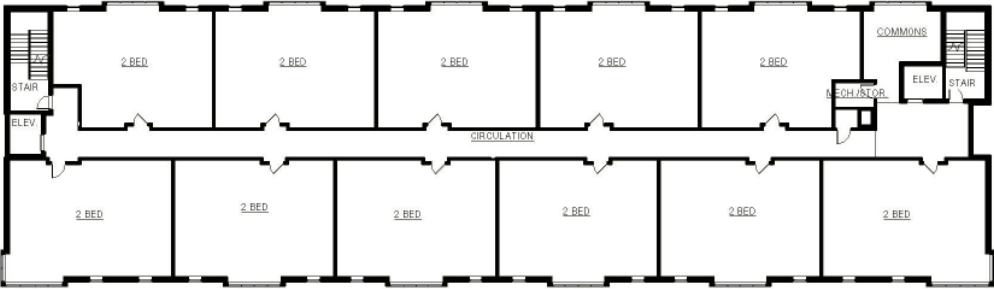
Landscape plan



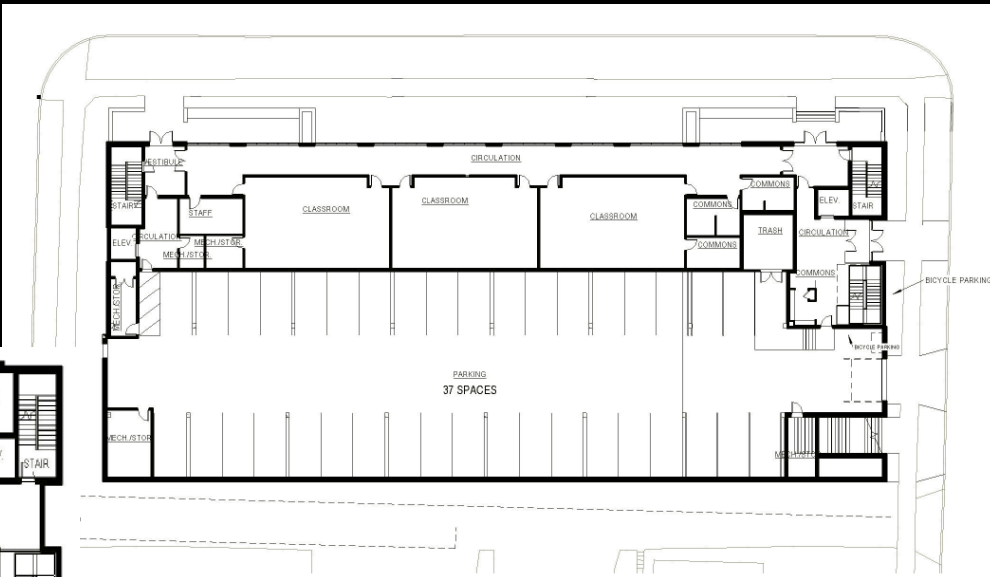
Floor Plans



Second Floor



Third-Sixth Floors

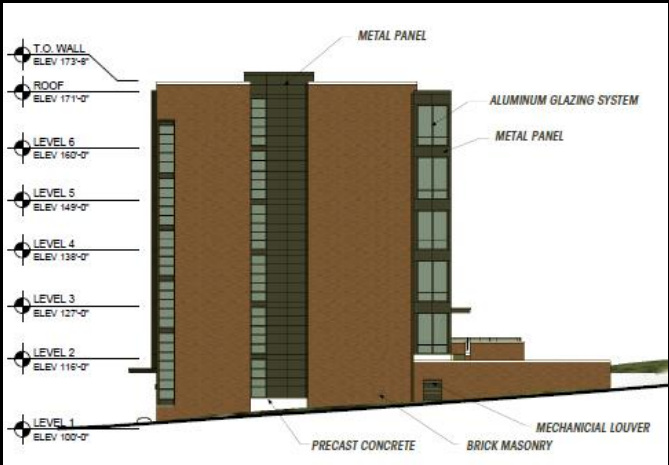


First Floor

Elevations



North Elevation (Wisconsin Avenue)



West Elevation



South Elevation



East Elevation

Renderings



Northeast corner from Wisconsin Ave.



Southeast corner from 89th St.



Southwest corner from 90th St.