

GROPPi'S FOOD MARKET  
H.C. RAMP AND STAIR ADDITION  
1441 E. RUSSELL AVENUE & S. WENTWORTH AVE.  
MILWAUKEE, WISCONSIN

ARCHITECT  
THE ALBION GROUP, INC.  
1243 NORTH TENTH STREET  
SUITE 100  
MILWAUKEE, WISCONSIN 53205  
414.223.3330  
414.223.3340 fax

INDEX OF DRAWINGS

REV #	SHEET #	DESCRIPTION
	--	COVER SHEET
	A1.0	RAMP DEMOLITION AND FOUNDATION PLANS
	A1.1	RAMP PLAN, EAST RAMP ELEVATION
	A1.2	STAIR SECTION, RAMP SECTION
	A1.3	RAMP SECTIONS



ARCHITECTS  
1243 North Tenth St.  
Suite 100  
Milwaukee, WI 53205  
414.223.3330  
414.223.3340 fax  
www.albionarch.com  
CONTACT: DAVE KRUMMEL

© THE ALBION GROUP, INC. ALL RIGHTS RESERVED

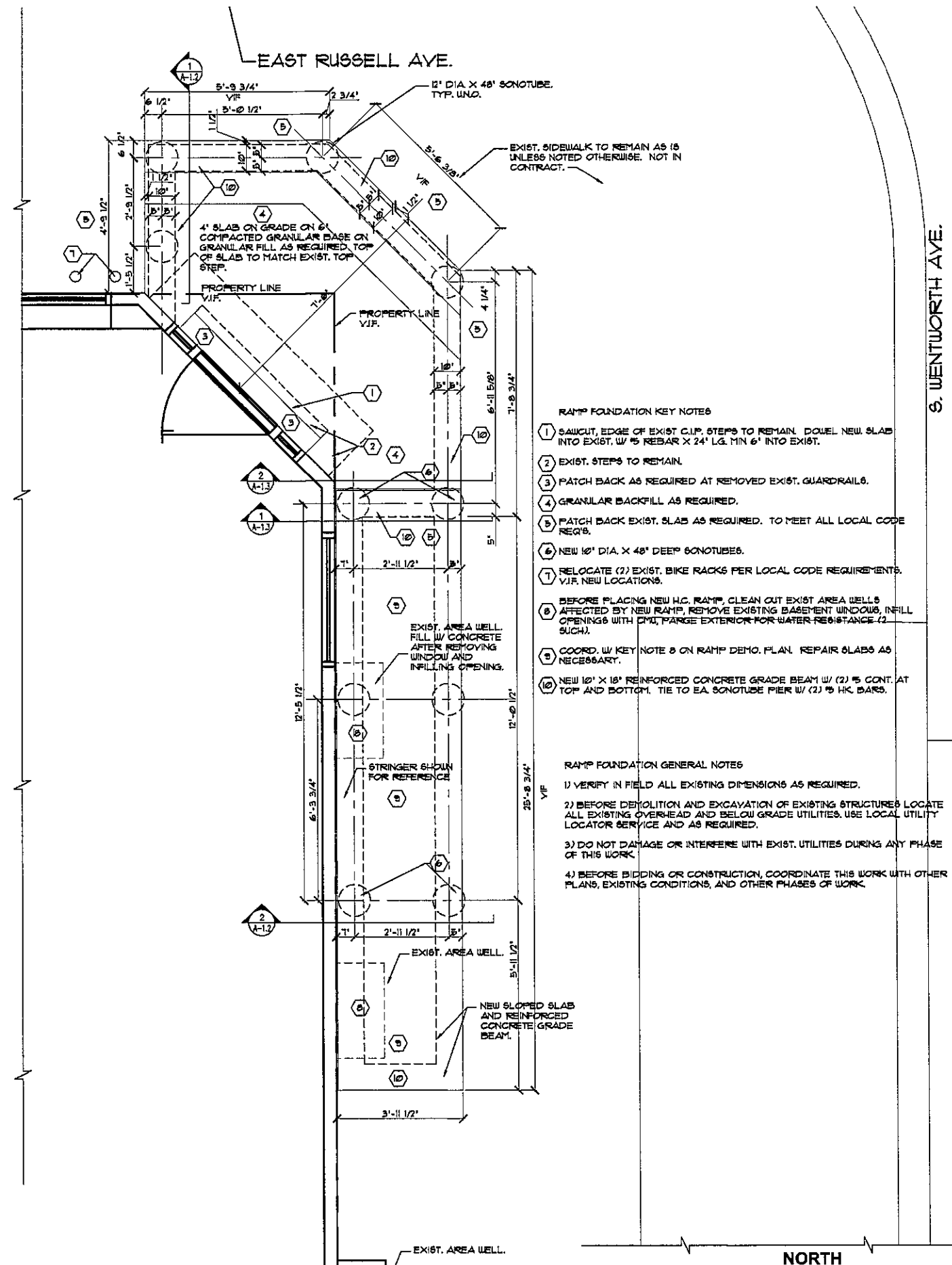
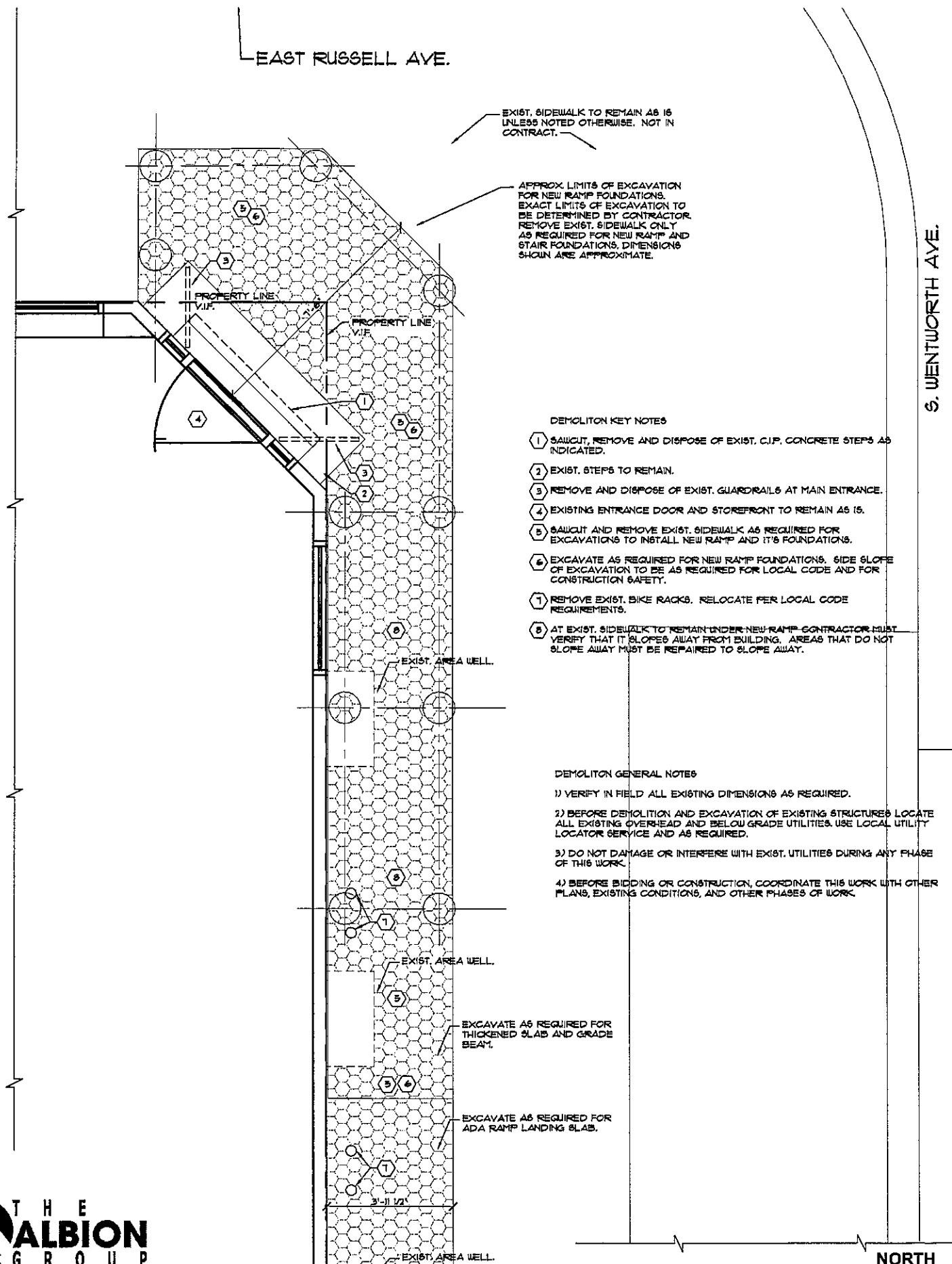
GROPPi'S FOOD MARKET  
1441 E. RUSSELL AVENUE AND  
S. WENTWORTH AVE.  
MILWAUKEE, WI  
PROJECT NO.: 1230-00

**A1.0**

**1**

**RAMP DEMO PLAN**

1/4" = 1'-0"



**2**

**RAMP FOUND. PLAN**

1/4" = 1'-0"

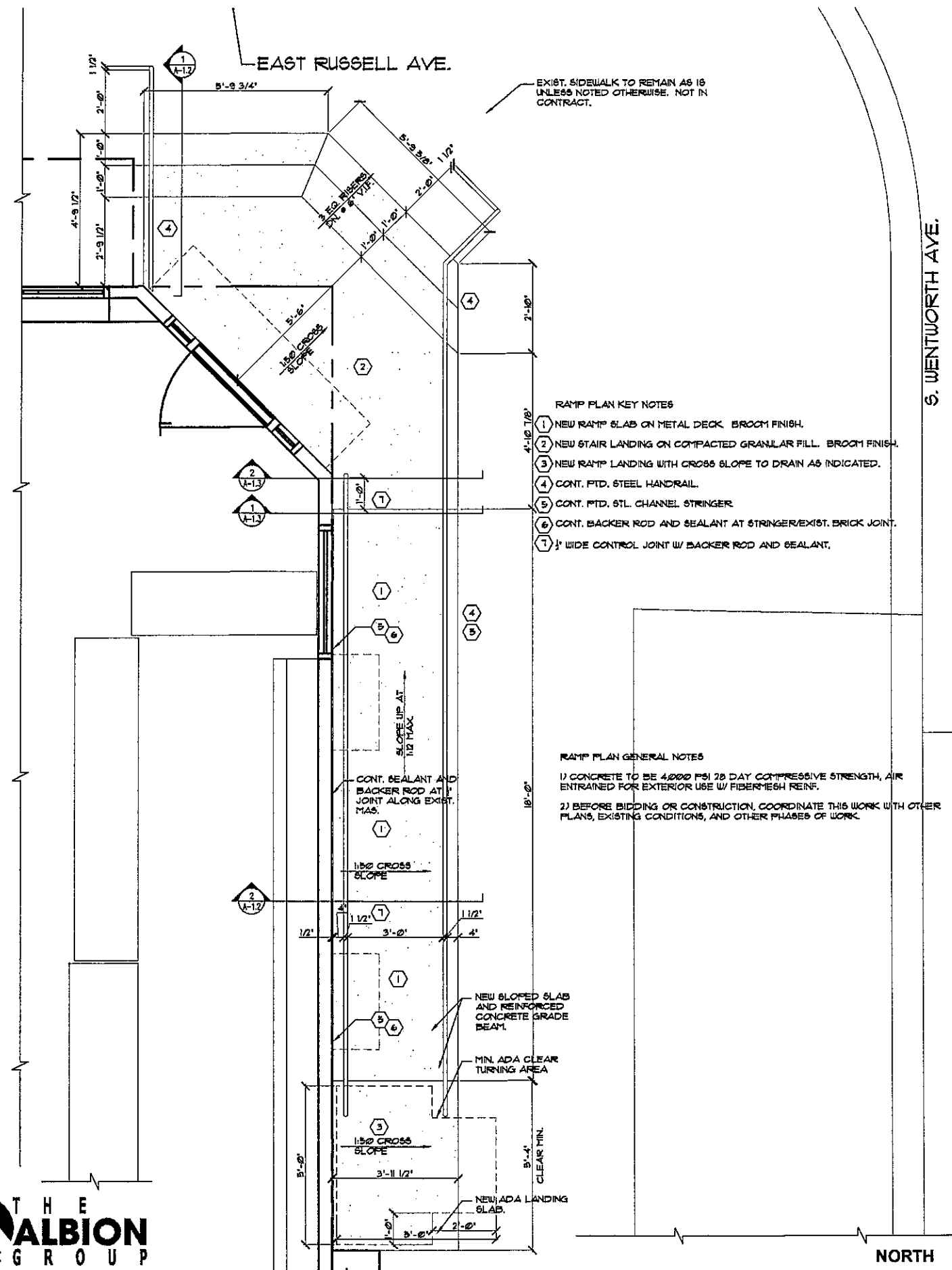


**A1.1**

**1**

**RAMP PLAN**

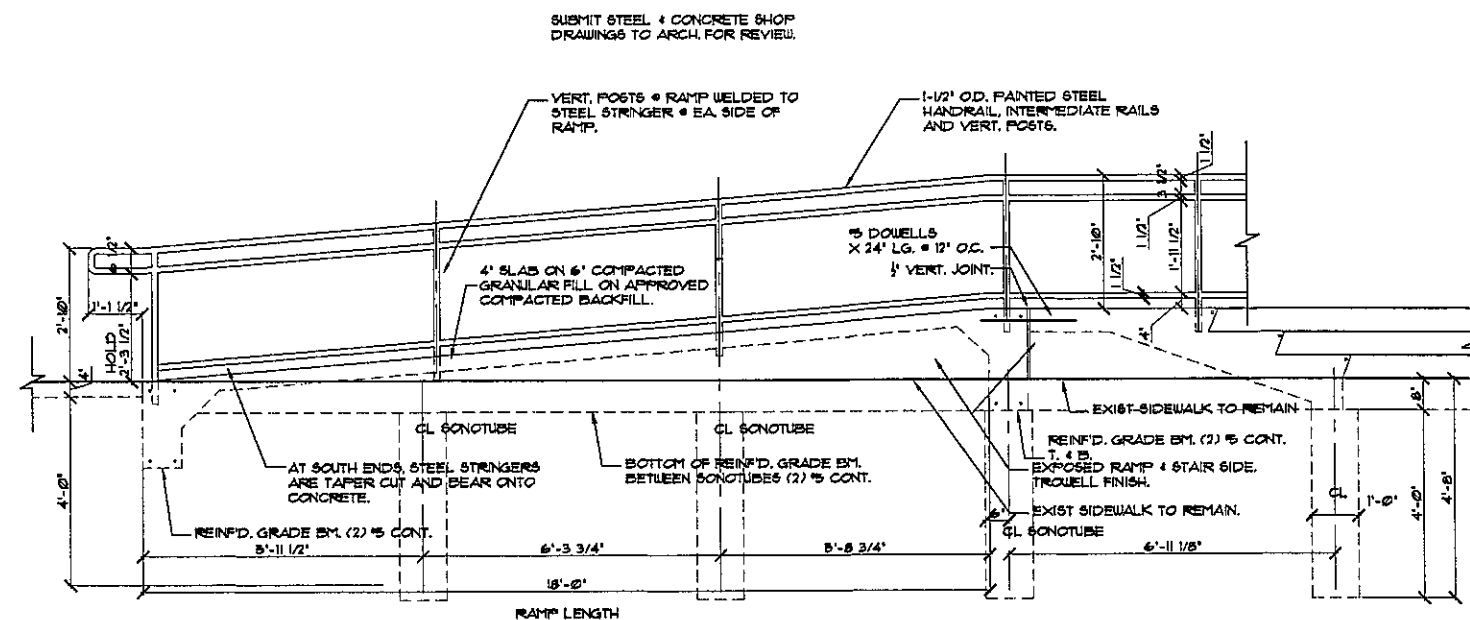
1/4" = 1'-0"

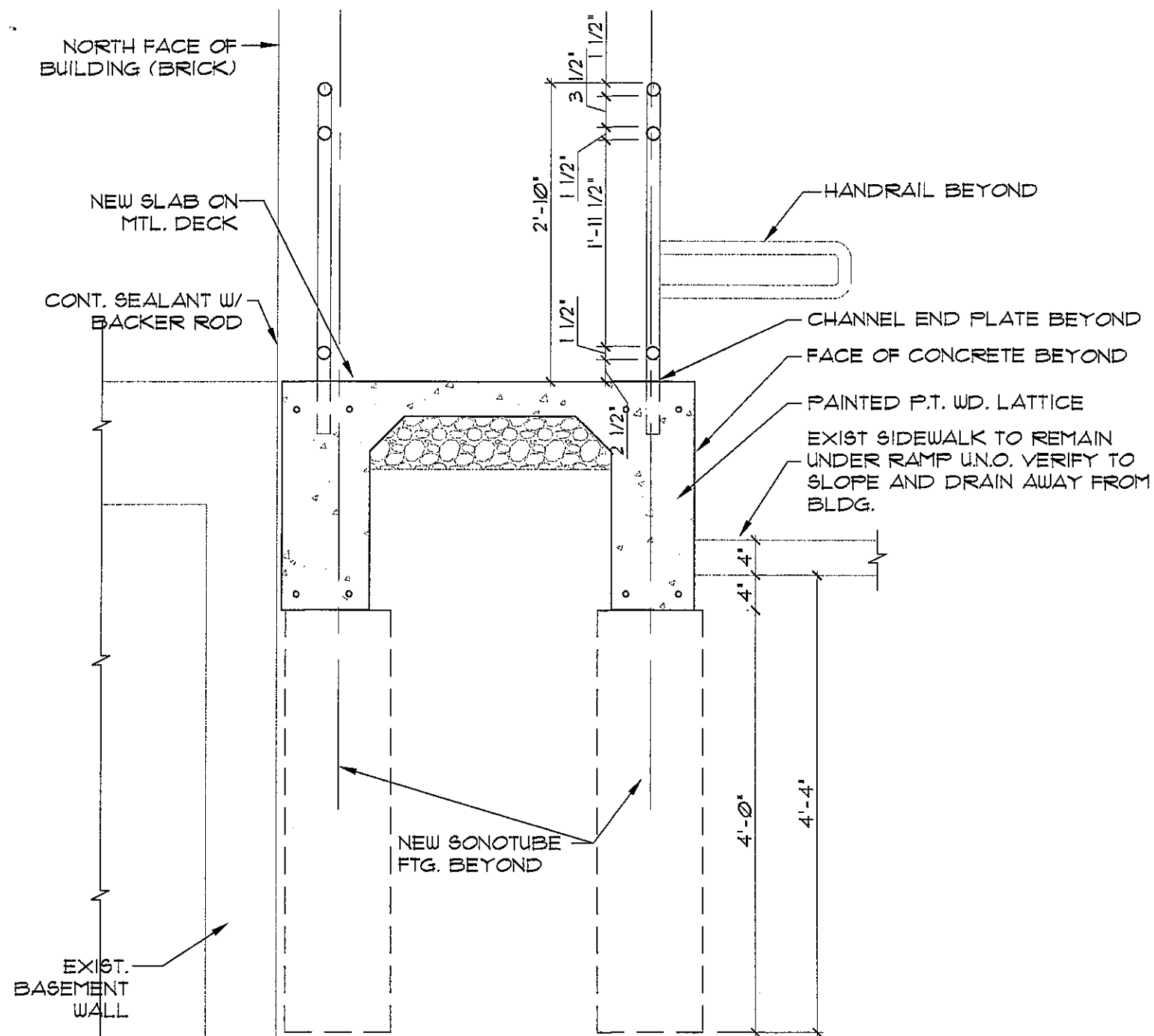


**2**

**EAST RAMP ELEVATION**

1/4" = 1'-0"





NOTE: EXISTING STRUCTURES ARE TO BE  
FIELD VERIFIED AS REQUIRED. EXIST.  
DRAWINGS ARE NOT AVAILABLE AND SUCH  
FEATURES SHOWN AS THEY ARE ASSUMED.

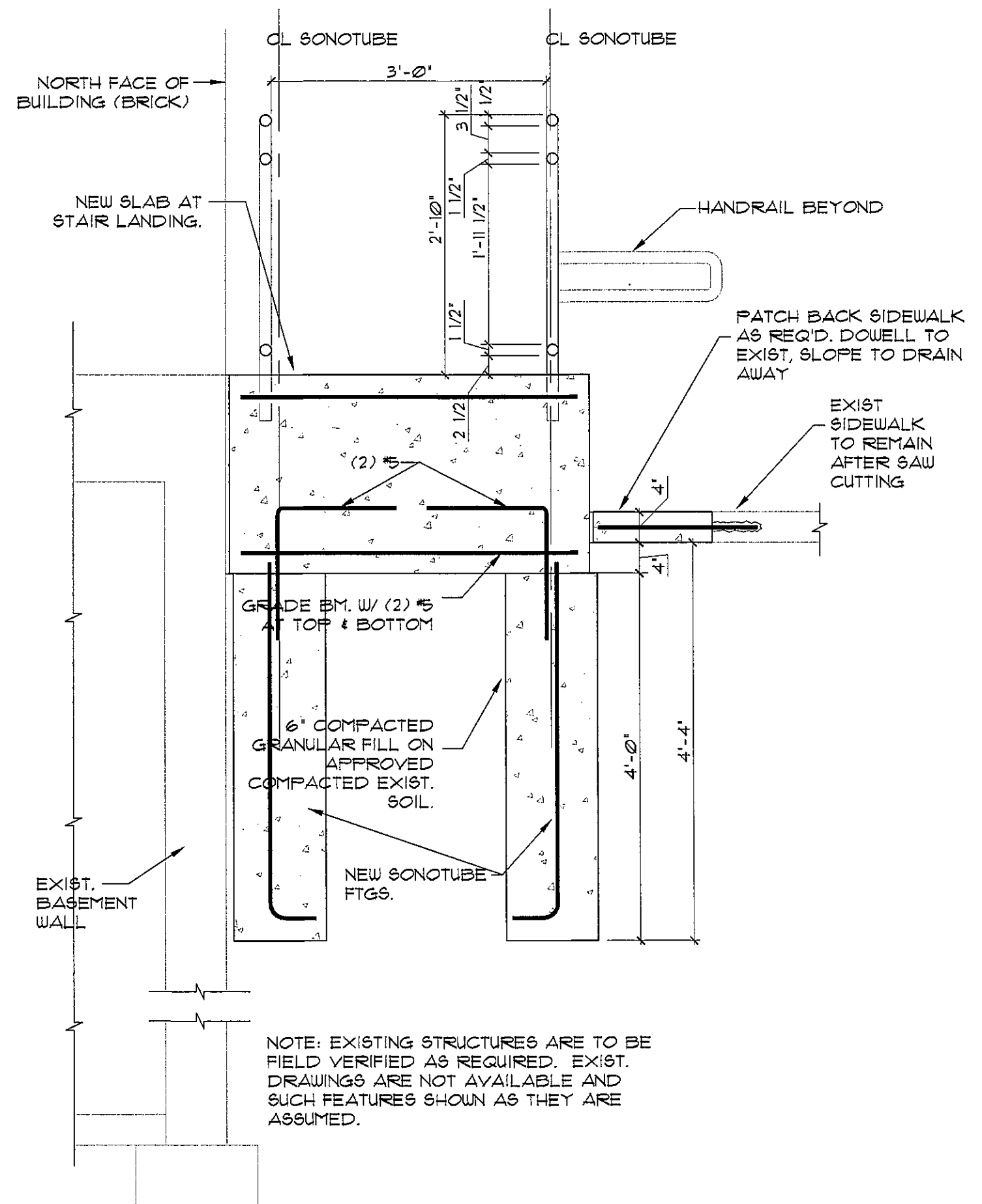


**A** RCHITECTS  
1243 North 10th St. - Suite 100  
Milwaukee, WI 53205  
414.223.3330 phone  
414.223.3340 fax

## A1.3

1

## RAMP SECTION

$$\overline{3/4'' = 1'-0''}$$


NOTE: EXISTING STRUCTURES ARE TO BE  
FIELD VERIFIED AS REQUIRED. EXIST.  
DRAWINGS ARE NOT AVAILABLE AND  
SUCH FEATURES SHOWN AS THEY ARE  
ASSUMED.

2

## RAMP SECTION

$$3/4^{11} = 1' - 0^{11}$$