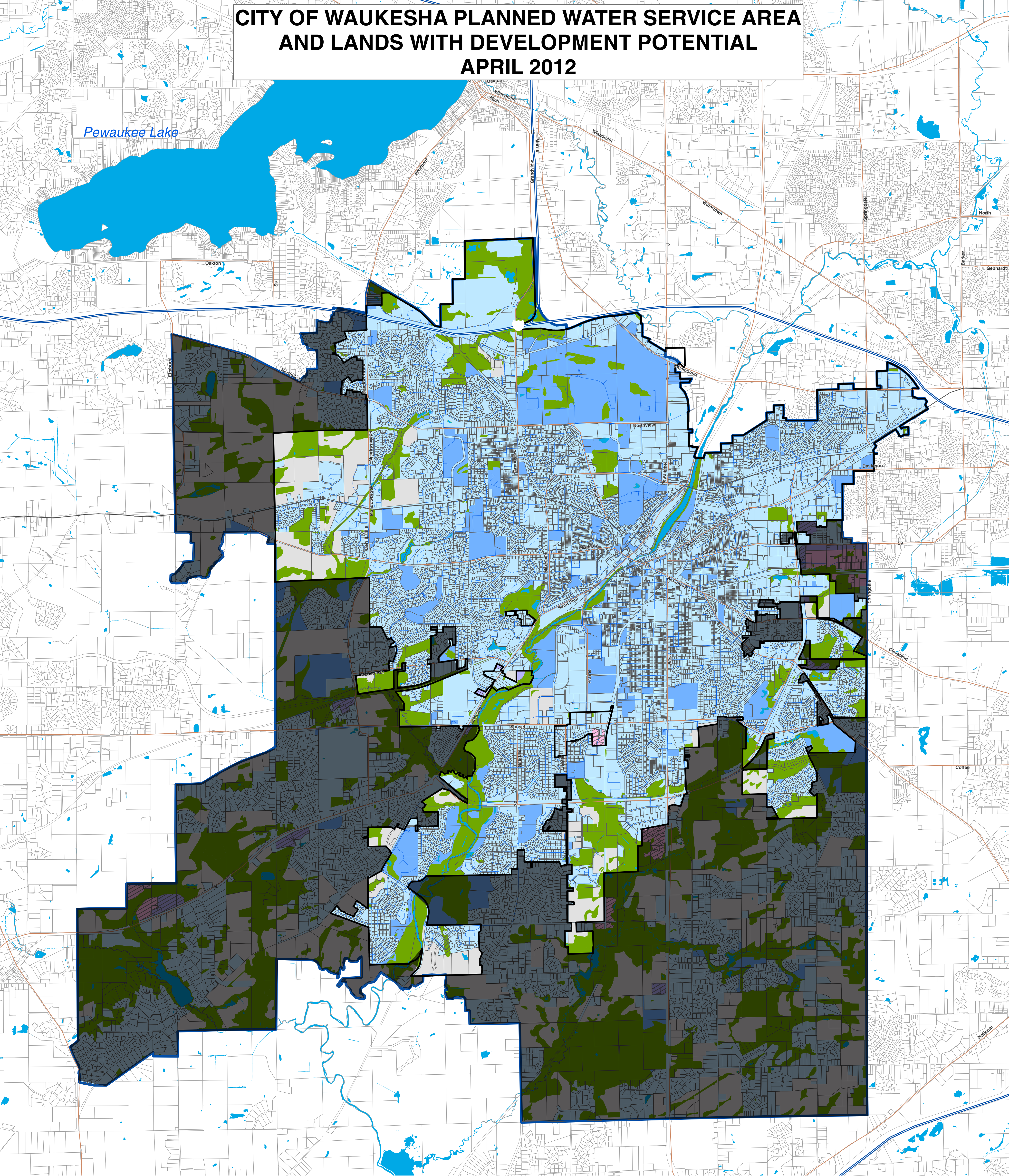


CITY OF WAUKESHA PLANNED WATER SERVICE AREA  
AND LANDS WITH DEVELOPMENT POTENTIAL  
APRIL 2012



NOTES

**LAND BASE:**  
85% Developed Land, Environmental Corridors & Wetlands  
15% Available for Future Development

**DEMOGRAPHICS IN 2000:**  
43.5% of the housing was rental housing  
14% of the population was Hispanic or persons of color

**SERVICE AREA:**  
The Planned Water Service Area includes: The City of Waukesha (100%), Town of Waukesha (84%), Town of Genesee (15%), Town of Delafield (9%), City of Pewaukee (4%) (as defined in the border agreement)  
  
The Planned Water Service Area does NOT include: City of Oconomowoc, City of Delafield, Village of Sussex, Village of Pewaukee, Brookfield (Town or City), City of New Berlin or City of Muskego

The City of Waukesha leads the county in affordable housing and has its own bus transport system.

LEGEND

- City of Waukesha Planned Water Service Area As Defined By SEWRPC
  - Freeway
  - Highway
  - Major Road
  - Existing Water Main
  - Water
  - Developed Land
  - Municipally Owned Land (Including Parks and Schools)
  - Wetlands and Environmental Corridors
  - Land with Development Potential
  - Parcel Lines
- 2035 Planned Commercial and Industrial Land Use Outside the City Limits:
- Industrial, Already Developed
  - Industrial, Not Developed
  - Commercial, Already Developed
  - Commercial, Not Developed
- SCALE:** 1 inch = 2,500 feet  
0 2,500 5,000 10,000 Feet

**DATA SOURCES:** Data source for Planned Service Area, Environmental Corridors, and Wetlands is SEWRPC. All other data is from the City of Waukesha.