

Historic Preservation Commission Meeting September 11, 2012



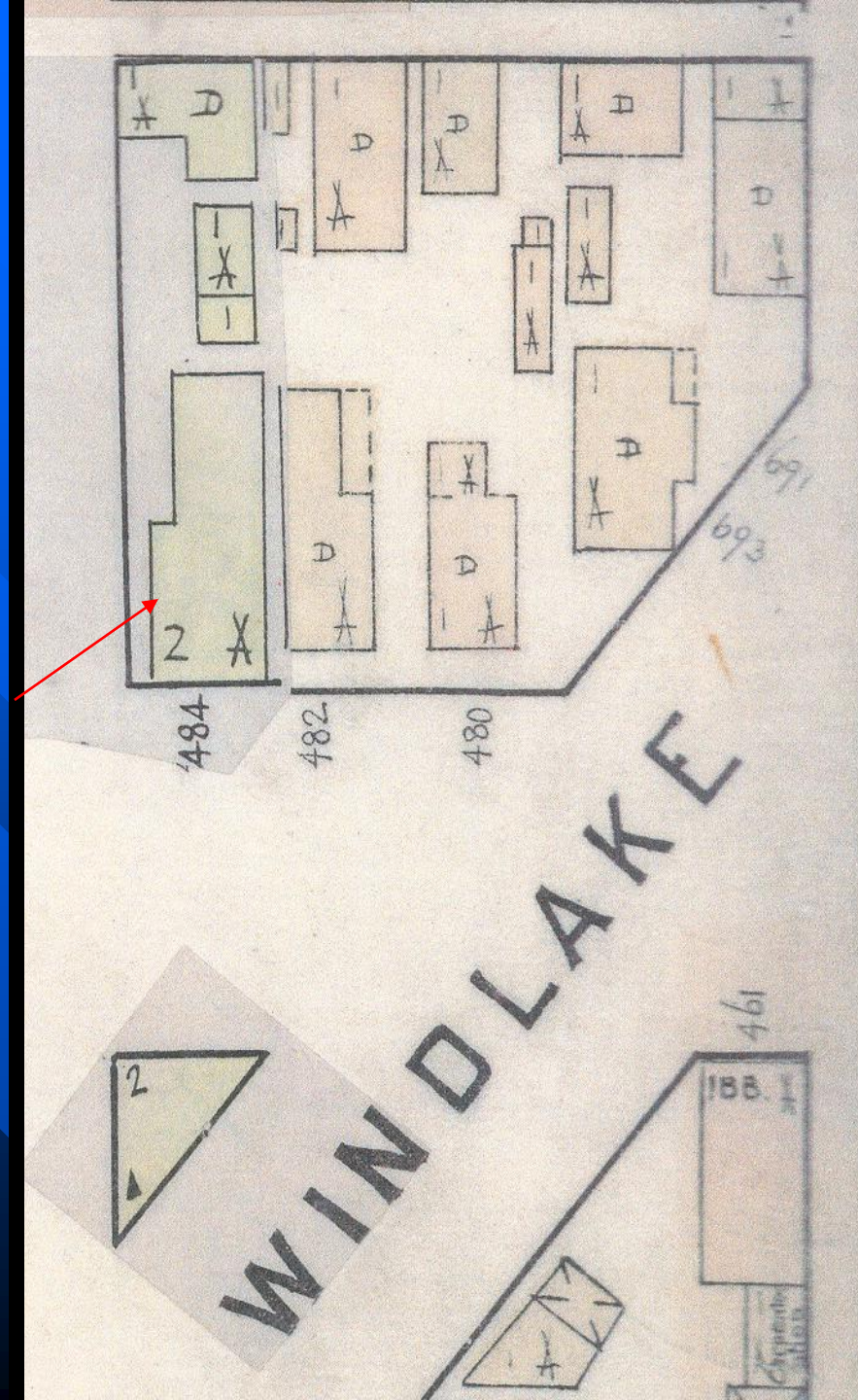
- Good Afternoon!
Please sign in at the door
- If you wish to speak on an issue or have your opinion noted by the commission, please fill out a form at the door and hand it to us

738 W. Maple St. & 716 W.
Windlake Ave.

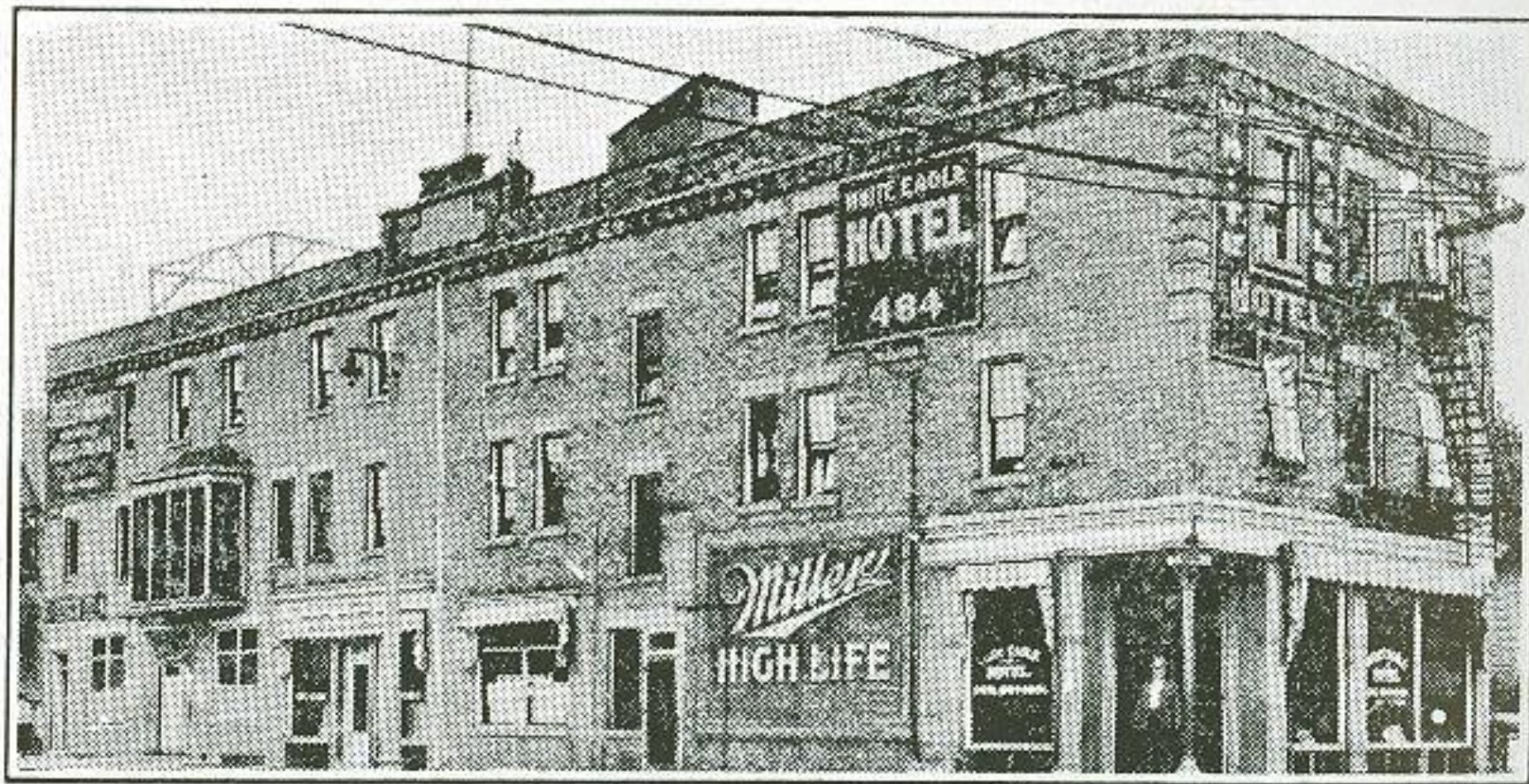
*Mitchell Street Historic
District*

District Expansion

Rascher Fire Insurance Map 1888







WHITE EAGLE HOTEL 1946





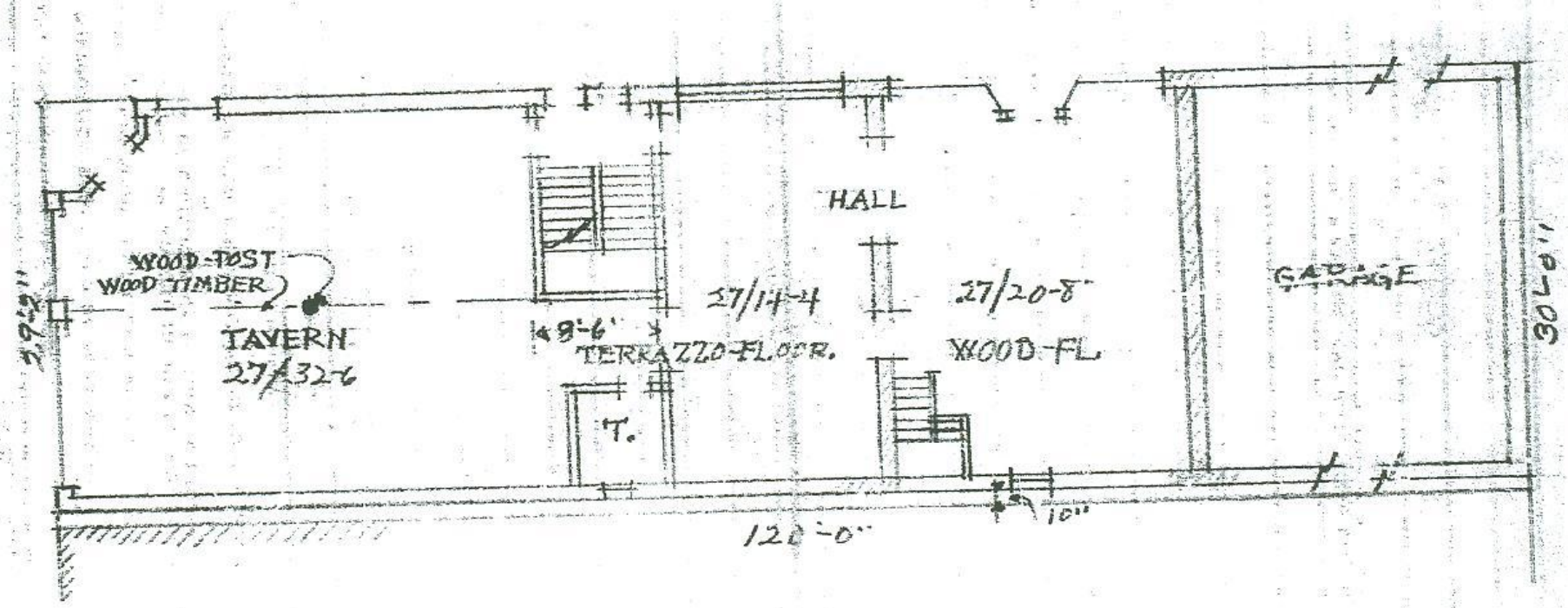
White Eagle Hotel 2012

L. CHROSCIEKI







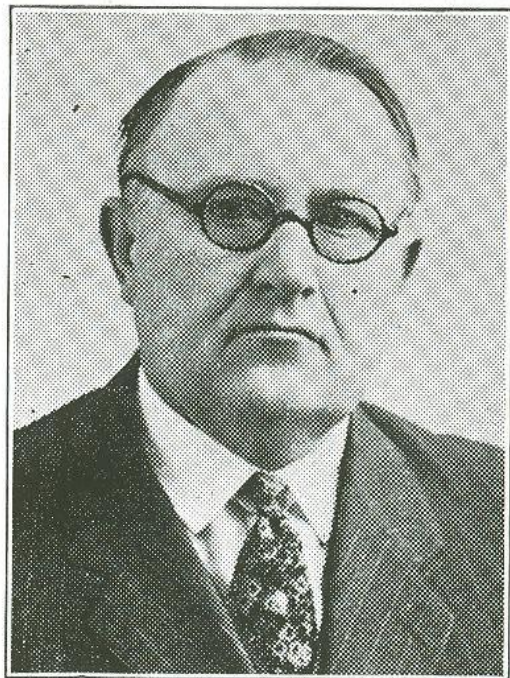
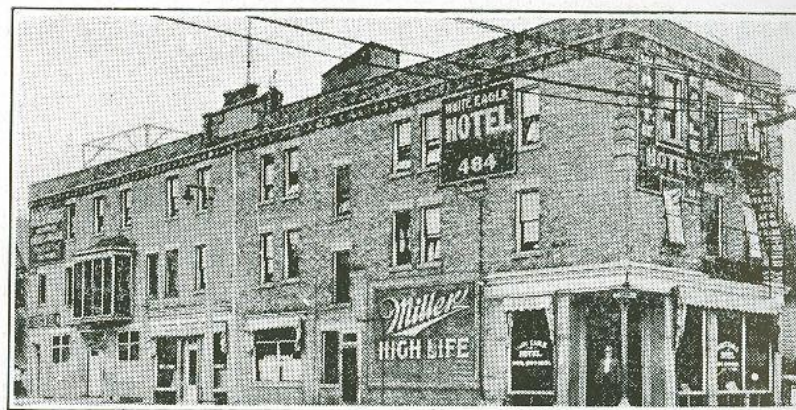


White Eagle Floor Plan 1934

The Only Polish Hotel
In the City of Milwaukee!

WHITE EAGLE HOTEL

738 W. Maple, corner S. 8th St.



Since 1920 the burden of extending traditional Polish hospitality to the weary travelers and guests in Milwaukee rest on the shoulders of genial Michael Wasilewski and his charming wife Frances.

Mr. Wasilewski was born January 29, 1883 in Poland, son of John and Rose Wasilewski, coming to America in 1899 to Suffield, Mass., and in 1905 to Milwaukee, Wis.

January 9, 1909 married Frances A. Iwanowski at St. Vincent's Church. This union was blessed with 4 daughters, Genevieve Kowalski, Emily Posch, Valentine, Florence and 1 son, Lt. Edwin Wasilewski, now in service, stationed with the Occupational Forces in Japan.

At "White Eagle Hotel" it is always the proverbial "GOŚĆ W DOM — BÓG W DOM" which means: When the Guest Arrives — God Arrives.



Front storefront altered 1955



White Eagle Hotel West Elevation



716 West Windlake Avenue

PASSED BY THE DEPARTMENT OF CIVIL DEVELOPMENT INFORMATION CENTER
 1000 W. 11th Avenue, Suite 200
 Anchorage, Alaska 99501-2000
 Phone: (907) 261-1000
 Fax: (907) 261-1001
 E-mail: info@alaska.gov
 Web: <http://www.alaska.gov>

