

# Historic Preservation Commission Meeting June 7, 2012



- Good Afternoon!  
Please sign in at the door
- If you wish to speak on an issue or have your opinion noted by the commission, please fill out a form at the door and hand it to us

Sydney Hih

*300-318 W. Juneau  
Avenue*

**Interim Historic  
Designation**













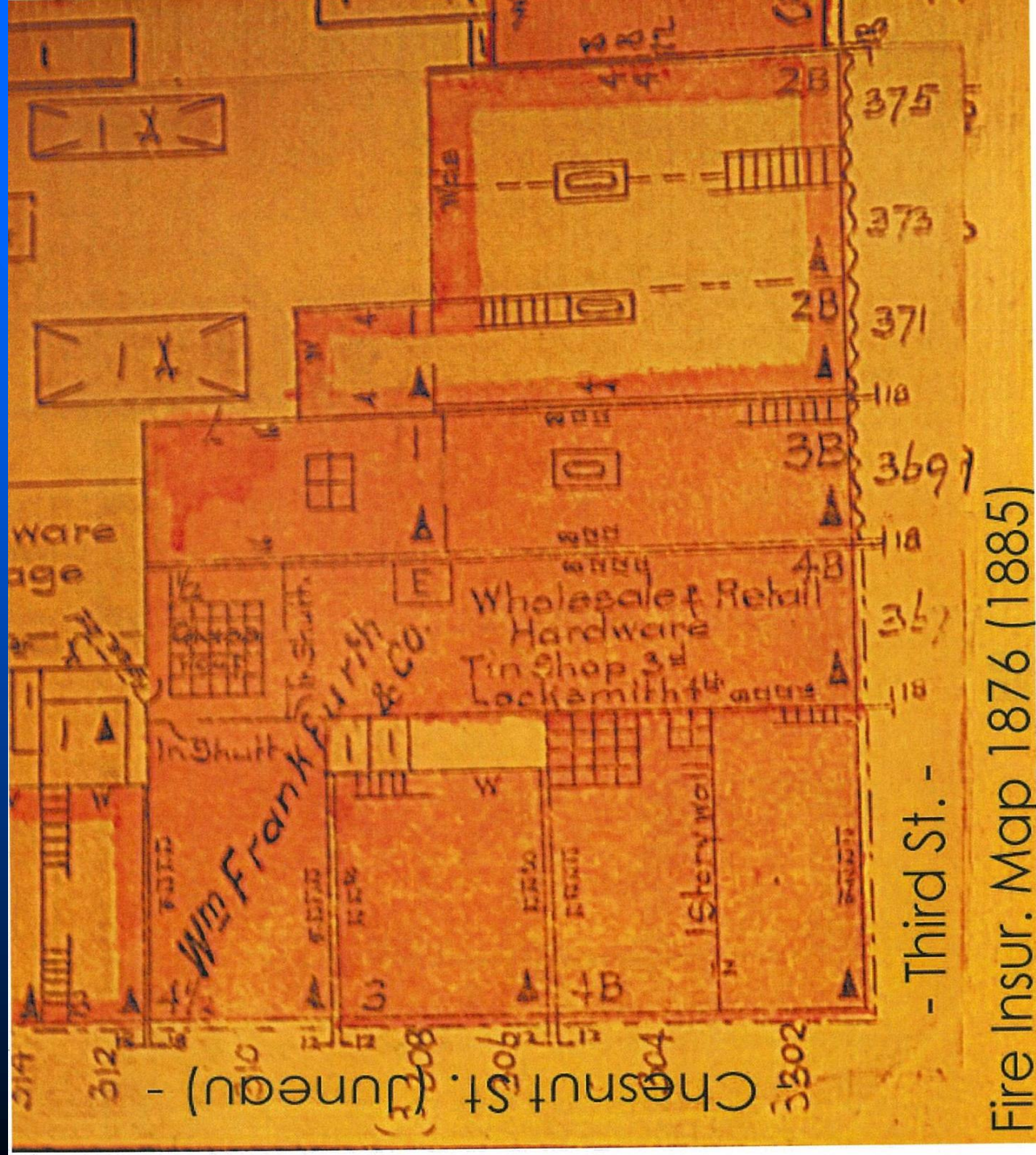
PRE 1958



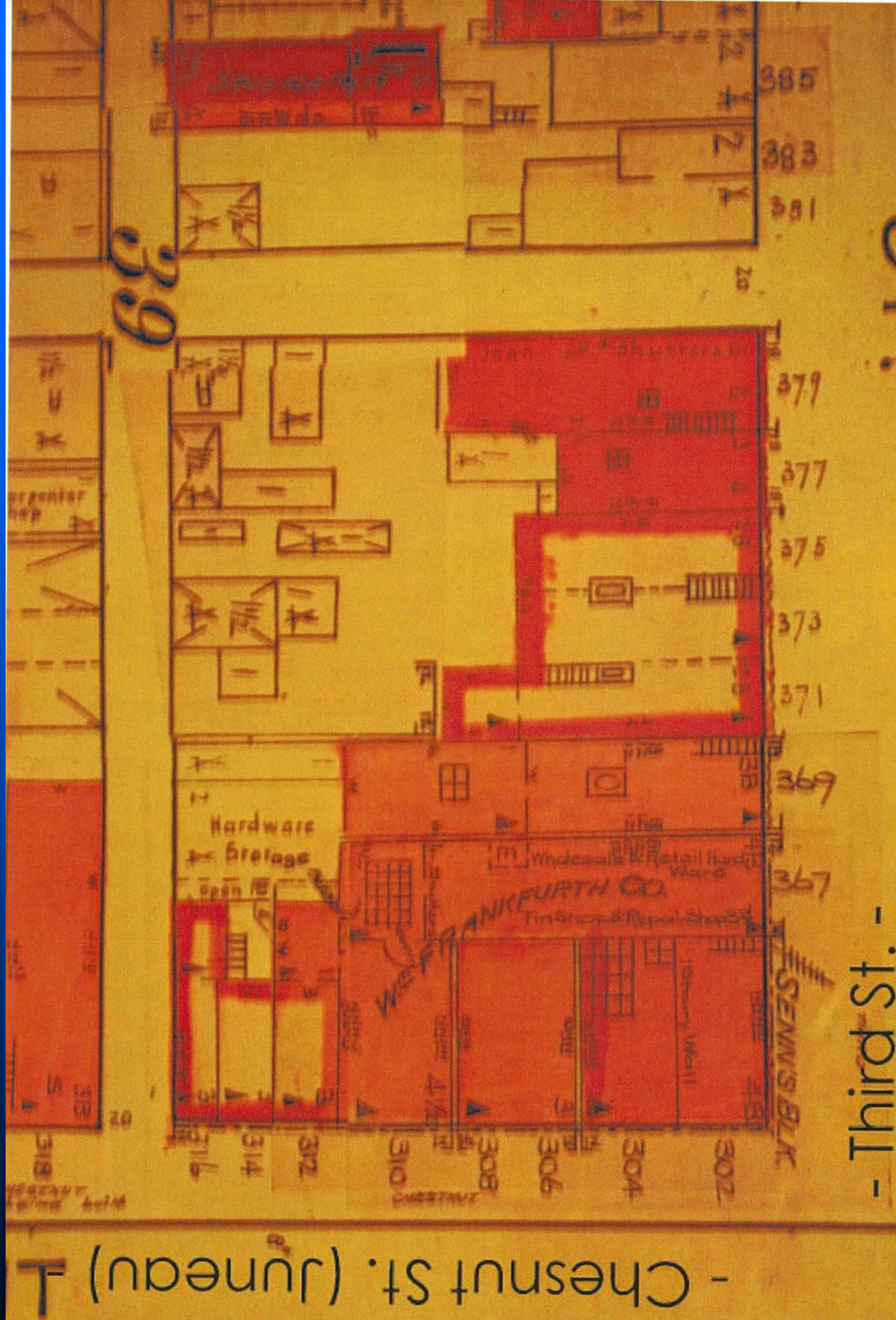


IN 1958









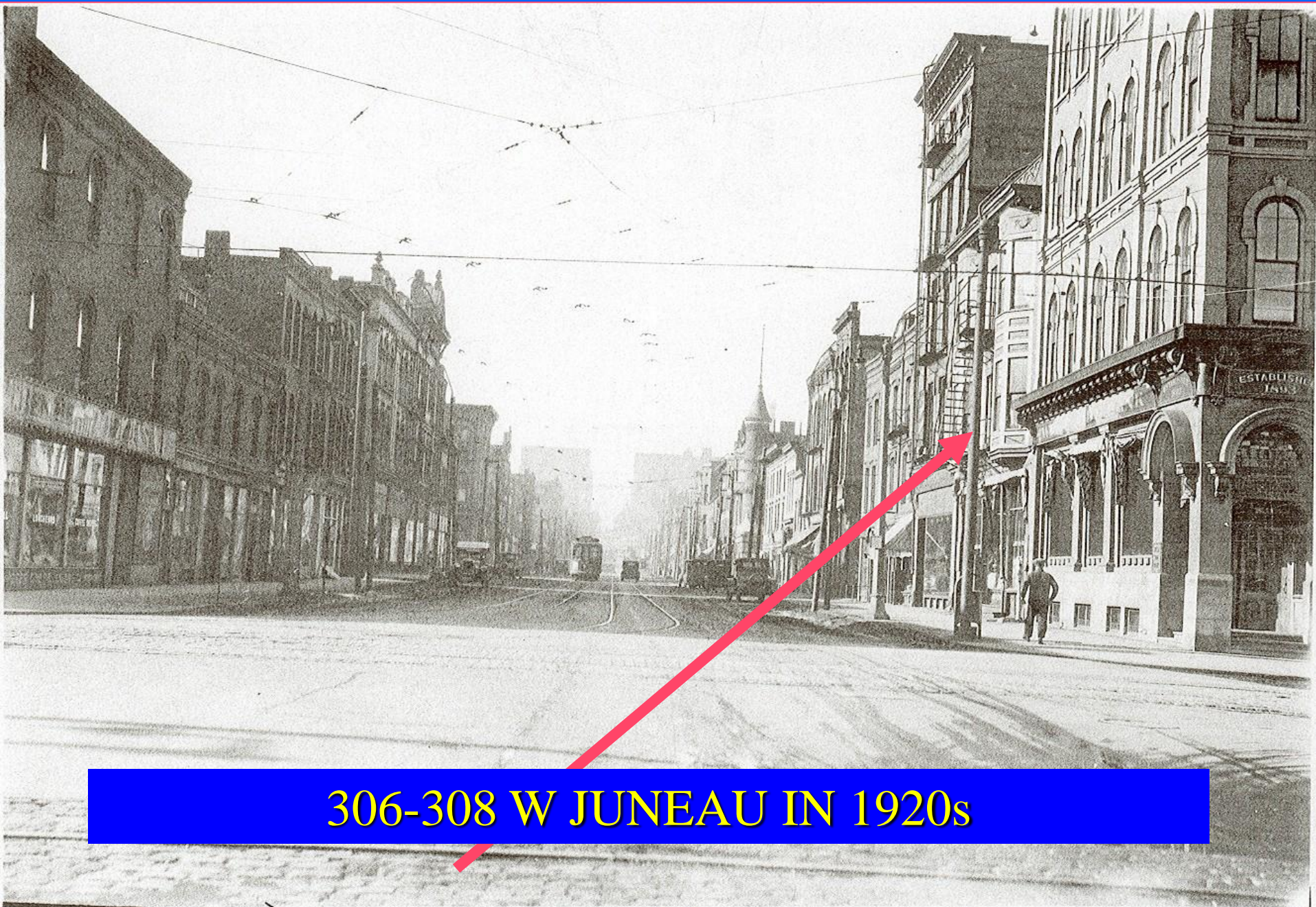
# Rascher's 1888 Fire Insurance map of Milwaukee





306-308 W.  
JUNEAU  
HERMAN  
&  
MARINER  
BUILDING  
1895





306-308 W JUNEAU IN 1920s



Frankfurth



310 W. JUNEAU IN 1877





310 W. JUNEAU  
AVE.

FRANKFURTH  
HARDWARE

BUILT 1880





**FRANKFURTH HARDWARE DETAIL**





**FRANKFURTH HARDWARE DETAIL**





**FRANKFURTH HARDWARE DETAIL**





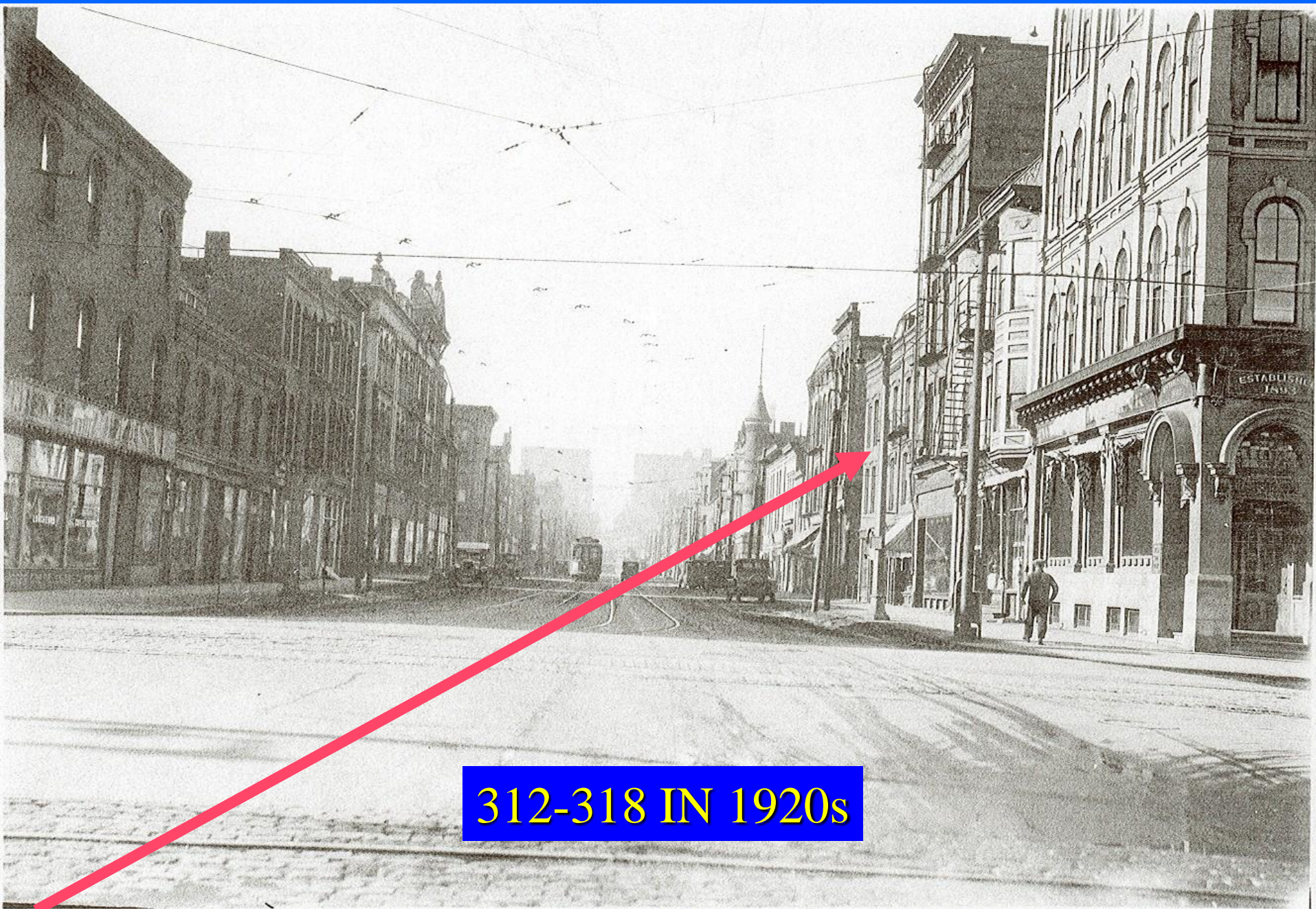
312-314-316/319 W. JUNEAU  
KALCKHOFF & ROSS BUILDING  
BUILT 1860/1868





DETAIL NO. 314





312-318 IN 1920s





**312-318 W JUNEAU WEST ELEVATION**





REAR SYDNEY HIH TODAY





SYDNEY HIH TODAY

JUNEAU AVE.  
OPEN  
For Business

- TRINITY
- HARP BROS PUB
- DUKY'S ON WATER
- SCOTTER'S PUB
- WHAT'S FRESH
- ARTS
- PERFORMING CENTER
- MCCARTHEY'S
- SALVAGE CHURCH
- BARBARA
- CALDWY TURLEY BARRY

FOLLOW DETOUR



