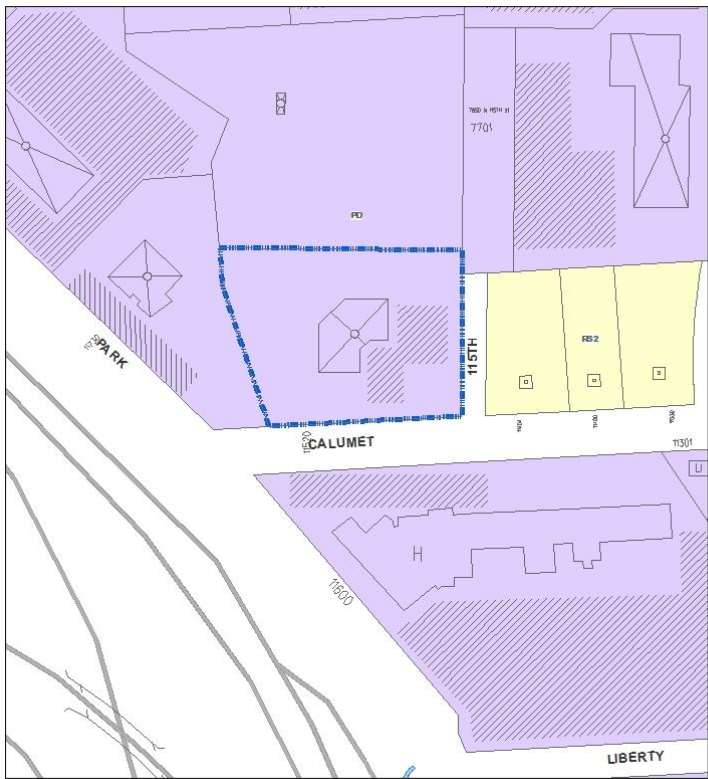


File No. 111482. A substitute ordinance relating to the Second Amendment to a Detailed Planned Development known as Park Place - Stage 14, for installation of a transmission structure and satellite dishes, on land located on the north side of West Calumet Road, east of West Park Place, in the 5th Aldermanic District. This amendment was requested by Milwaukee Television LLC, and will allow for installation of a television transmission structure and ground level satellite dishes on the site.



File No. 111482. A substitute ordinance relating to the Second Amendment to a Detailed Planned Development known as Park Place - Stage 14, for installation of a transmission structure and satellite dishes, on land located on the north side of West Calumet Road, east of West Park Place, in the 5th Aldermanic District. This amendment was requested by Milwaukee Television LLC, and will allow for installation of a television transmission structure and ground level satellite dishes on the site.



**FN 111482**  
**2nd Amendment to DPD**  
**April 2012**

Proposed Zoning Change

**Residential Districts**

- Single Family (RS1-6)
- Two-Family (RT1-4)
- Multi-Family (RM1-7)
- Residential and Office (RO)

**Commercial Districts**

- Neighborhood Shopping (CN)
- Local Business (LB1-2)
- Commercial Service (CS)
- Regional Business (CR)
- Central Business (CB)

**Industrial Districts**

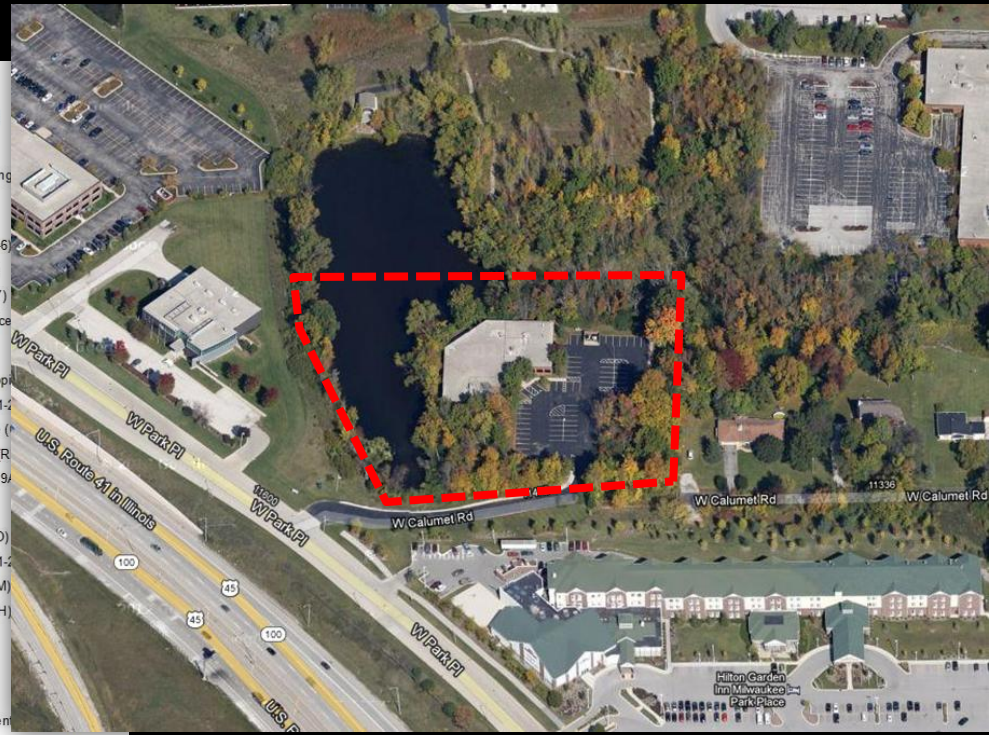
- Industrial - Office (IO)
- Industrial - Light (IL1-2)
- Industrial - Mixed (IM)
- Industrial - Heavy (IH)

**Special Districts**

- Parks (PK)
- Institutional (TI)
- Planned Development (PD)
- Redevelopment (RD)



Data source: Department of City Development 2011



# Park Place, Stage 14 DPD Existing Context



East view from northwest corner of the parking lot.  
The dead end for West Calumet Road is just beyond the trees



East face and south end of building.  
Photo taken from the southeast edge of the parking lot.



East side of the building.  
Photo taken from the southeast edge of the parking lot.

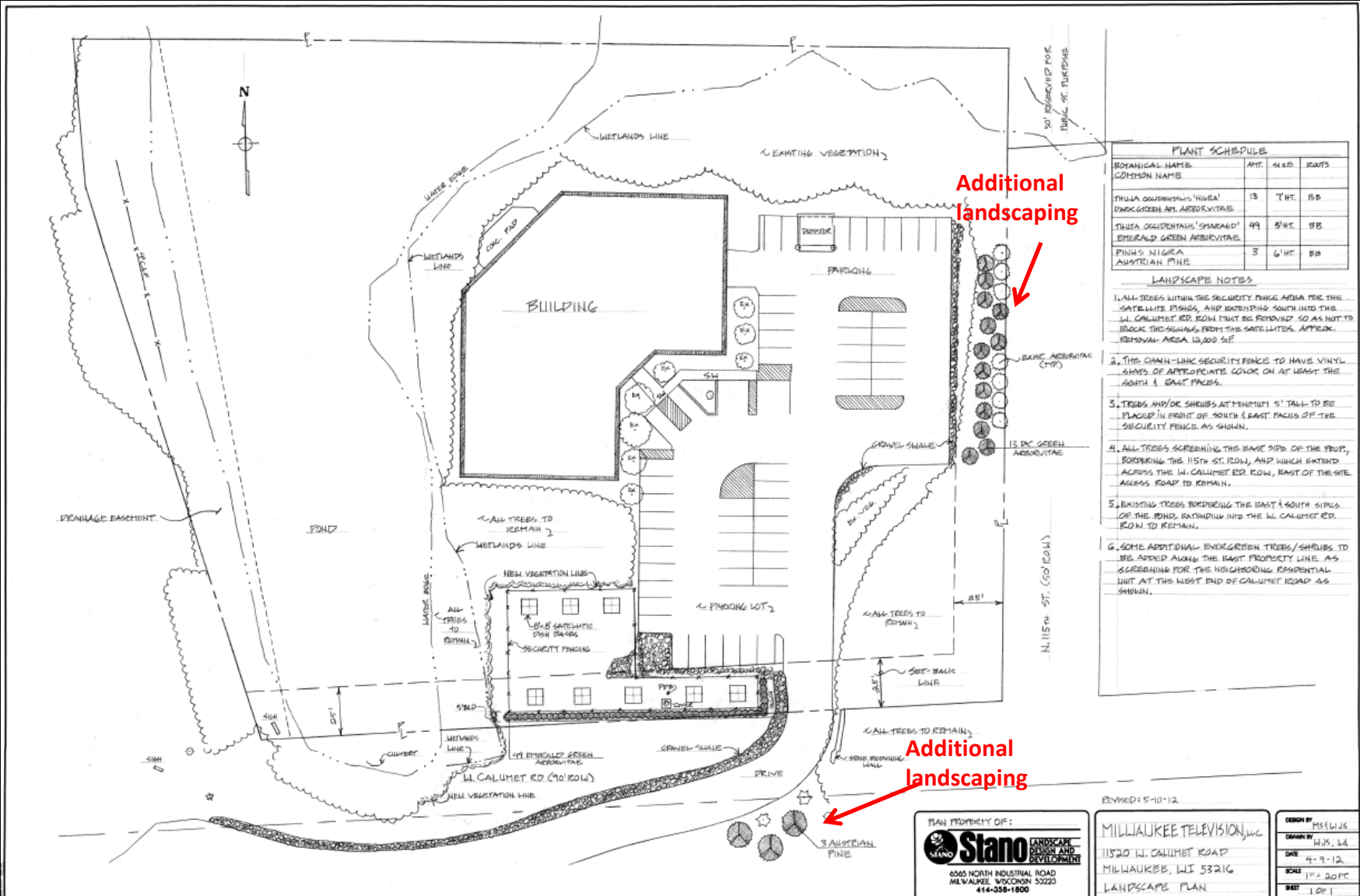


Entrance drive to 11520 W. Calumet Road and rear of adjacent Hilton Garden Inn.  
Photo taken from south side of Park Place road opposite Highway 145.



Looking southeast from the northwest side of the parking lot.  
The entrance road is just beyond the trees and a portion of the rear of the Hilton Garden Inn in the background

# Park Place, Stage 14 DPD Proposed Landscape Plan



PLAN PROPERTY OF:

6065 NORTH INDUSTRIAL ROAD  
MILWAUKEE, WISCONSIN 53223  
414-358-1800

DESIGNED BY: MS141JS  
DRAWN BY: WJS, BA  
DATE: 4-9-12  
SCALE: 1" = 20 FT.  
SHEET: 1 OF 1

MILWAUKEE TELEVISION, INC.  
11520 W. CALUMET ROAD  
MILWAUKEE, WI 53216  
LANDSCAPE PLAN

REVISED: 5-10-12

**Park Place, Stage 14 DPD Proposed Signage**

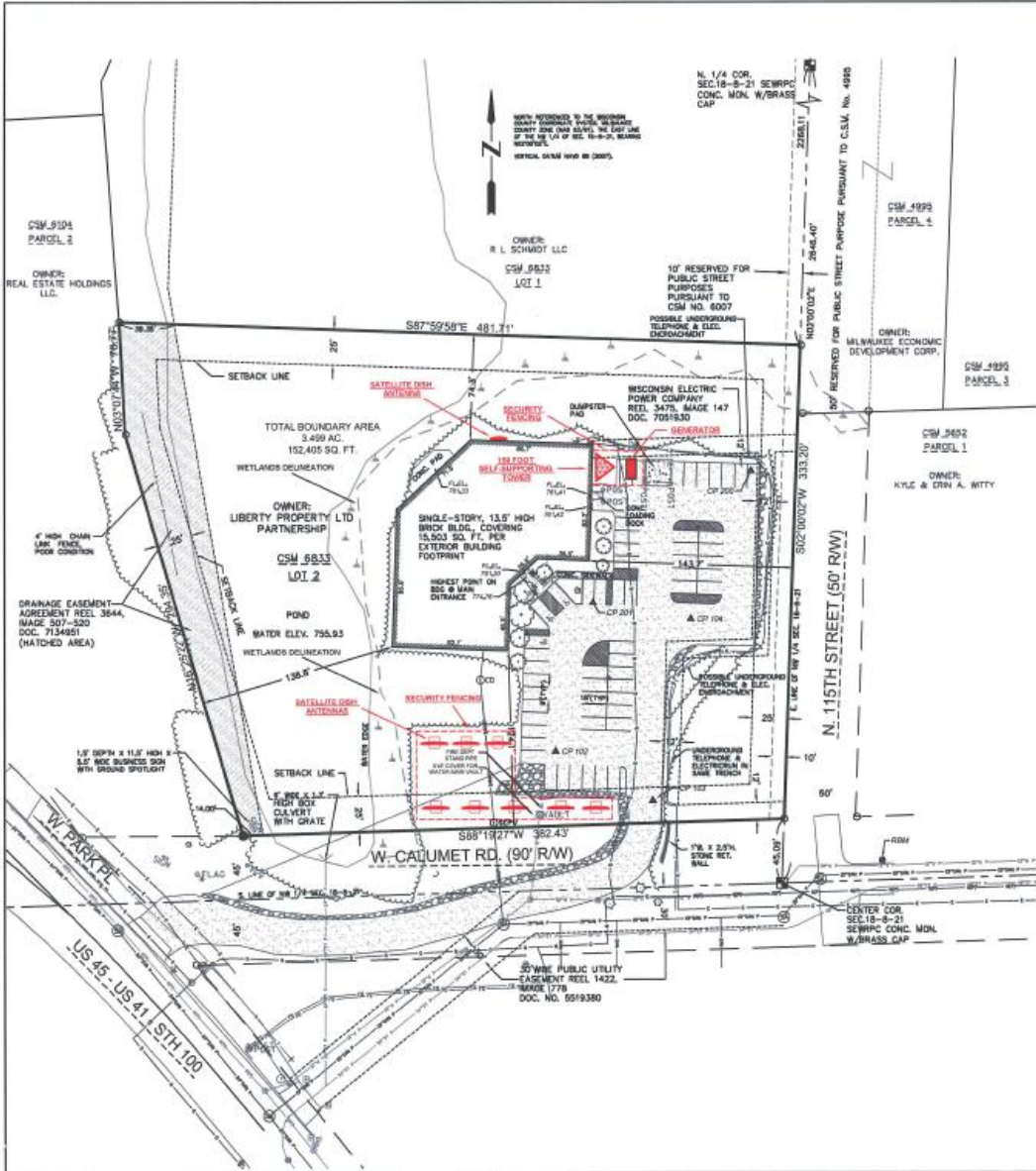
*Existing Signage*



*Proposed Signage*

# Park Place, Stage 14 DPD Proposed Site Plan

**FINAL**



**Proposed Site Additions**

1. A 150 foot tall, free-standing tower is to be located at the rear, East face of the building.
2. A single, eight-foot diameter, dish-type antenna will be mounted near the tower top, not to extend above the tower. Up to five, small antennas resembling rooftop TV antennas will be mounted lower on the tower. Two small satellite dishes, four feet in diameter, will be located on the south side of the tower approximately thirty feet above ground.
3. A generator is to be located between the tower and the dumpster enclosure. This will result in the loss of two parking spaces.
4. A security fence will be placed around the tower and generator. This will be a seven foot tall chain link fence with three barb wire strands above the top support rail, making the overall height eight feet. A locked access gate will be placed where most convenient for maintenance personnel to enter the enclosure.
5. Up to eight (8) satellite dish-type antennas, needed to receive programming materials, to be located on the South side of the property. The dishes are 4.5 meters (14.8 feet) in diameter. They are supported by a single steel post which is anchored to a concrete pad.  
The pad is reinforced concrete which is eight feet square and three feet thick. The surface would be set approximately four inches above grade to allow water to run off and avoid collecting debris. The overall height to the top of the dishes will be seventeen (17) feet +/- one foot as determined by the upward pointing angle to the sky.
6. A security fence will be placed around the perimeter of the dish area. The construction will be as described under Item 4 above.
7. One 2.4 meter (7.8 foot) satellite dish to be pipe mounted to the north building wall, toward the rear of the building. The antenna would be placed to just clear the building roof.

**Notes**

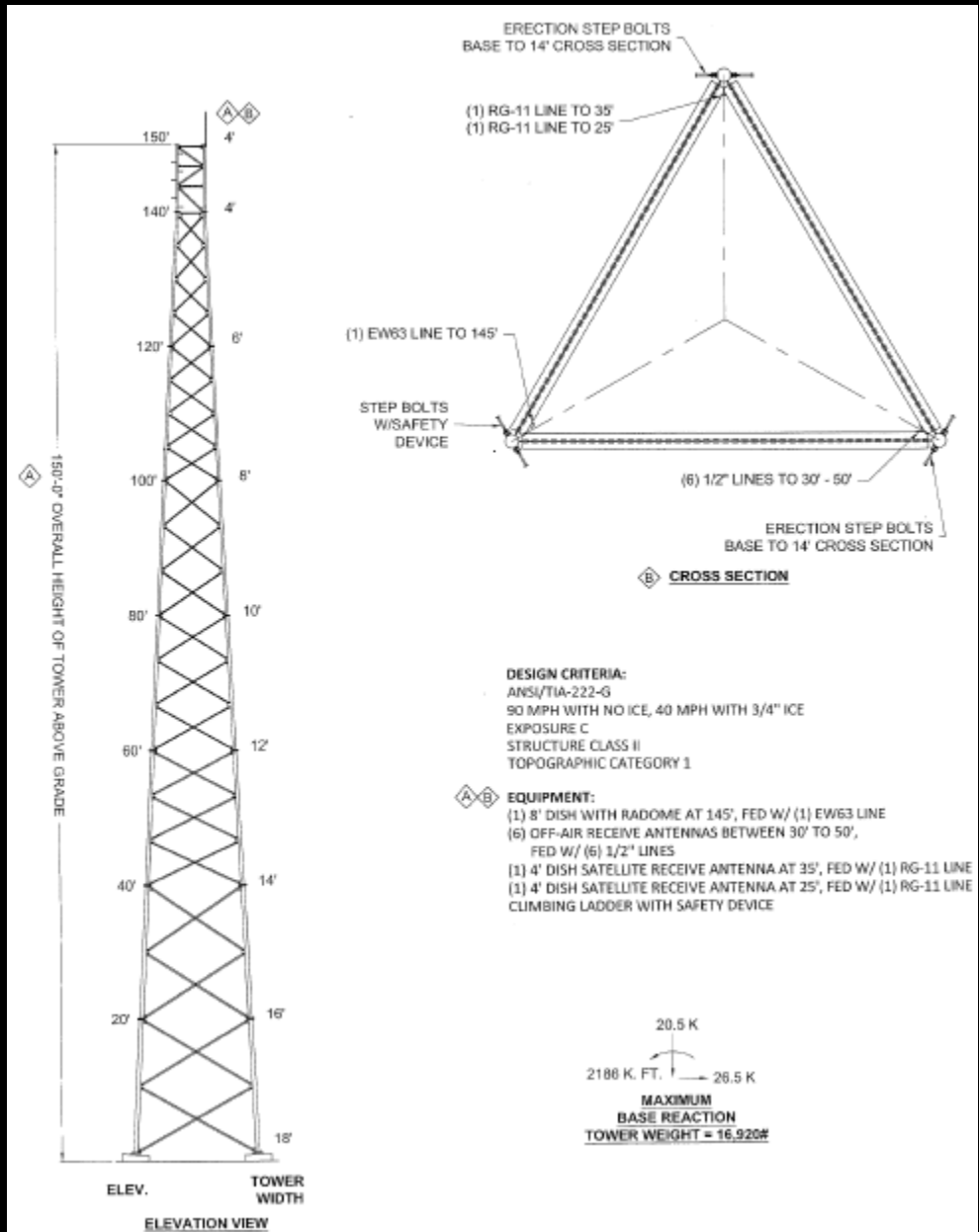
1. All satellite antennas are for receive-only applications, none will be used for transmission purposes.
2. Nothing will be removed or altered in any of the delineated wetlands areas.

SITE PLAN ADDITIONS	
PARK PLACE BUILDING	
11520 W. CALUMET ROAD MILWAUKEE, WI. 53223	
SUBMITTED BY: MILWAUKEE TELEVISION, LLC 4041 N. 35TH STREET MILWAUKEE, WI 53218	
FILE NUMBER: 111482	REVISED: 4/16/2012

# Park Place, Stage 14 DPD Proposed Tower



FCC REQUIRED SIGN TO POST ON THE TOWER

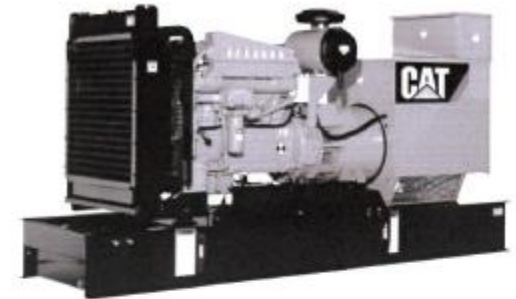


## Park Place, Stage 14 DPD *Proposed Equipment*



4.5 Meter Satellite Dish and Mounting pad

## DIESEL GENERATOR SET



### FEATURES

#### UL 2200

- UL 2200 Listed configuration available

#### FULL RANGE OF ATTACHMENTS

- Wide range of bolt-on system expansion attachments, factory designed and tested

#### ENCLOSURES (Optional)

- Weather protective and sound attenuated

#### SINGLE-SOURCE SUPPLIER

- Complete systems designed and built at Caterpillar ISO 9001 certified facilities
- **Certified Prototype Tested** with torsional analysis

#### WORLDWIDE PRODUCT SUPPORT

- Worldwide parts availability through the Caterpillar dealer network
- With over 1,200 dealer outlets operating in 166 countries, you're never far from the Caterpillar part you need.
- 99.5% of parts orders filled within 48 hours. The best product support record in the industry.
- Caterpillar dealer service technicians are trained to service every aspect of your electric power generation system.
- Preventive maintenance agreements
- The Cat Scheduled Oil Sampling (S•O•S™) program cost effectively detects internal engine component condition, even the presence of unwanted fluids and combustion by products