

Historic Preservation Commission Meeting

April 10, 2012



- Good Afternoon!
Please sign in at the door
- If you wish to speak on an issue or have your opinion noted by the commission, please fill out a form at the door and hand it to us

728 E. Brady Street

Elevated Deck Addition

**Brady Street Historic
District**



728 E. Brady St.

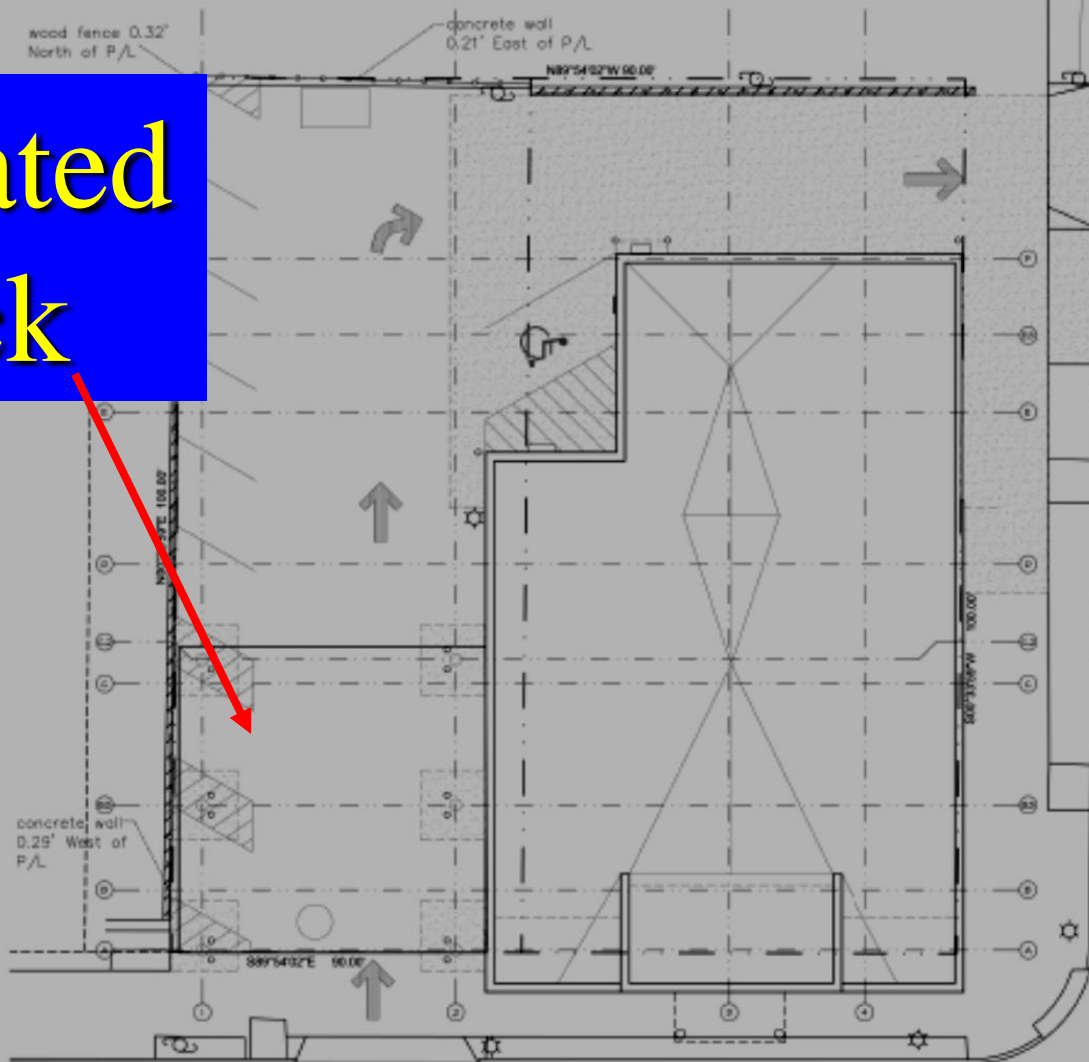
New deck
here



Looking northeast



Elevated
deck



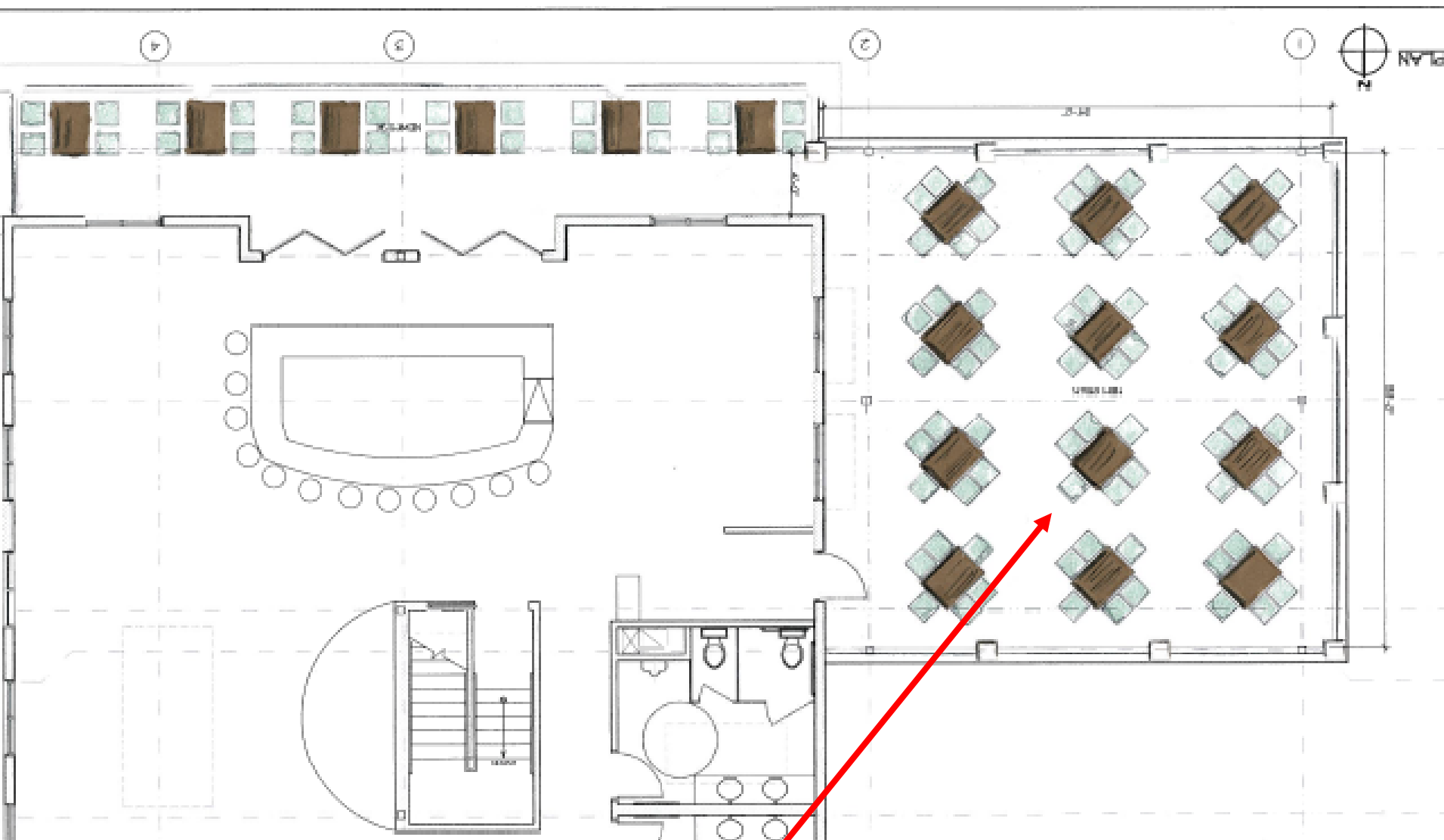
E. BRADY ST.

66' PUBLIC RIGHT OF WAY

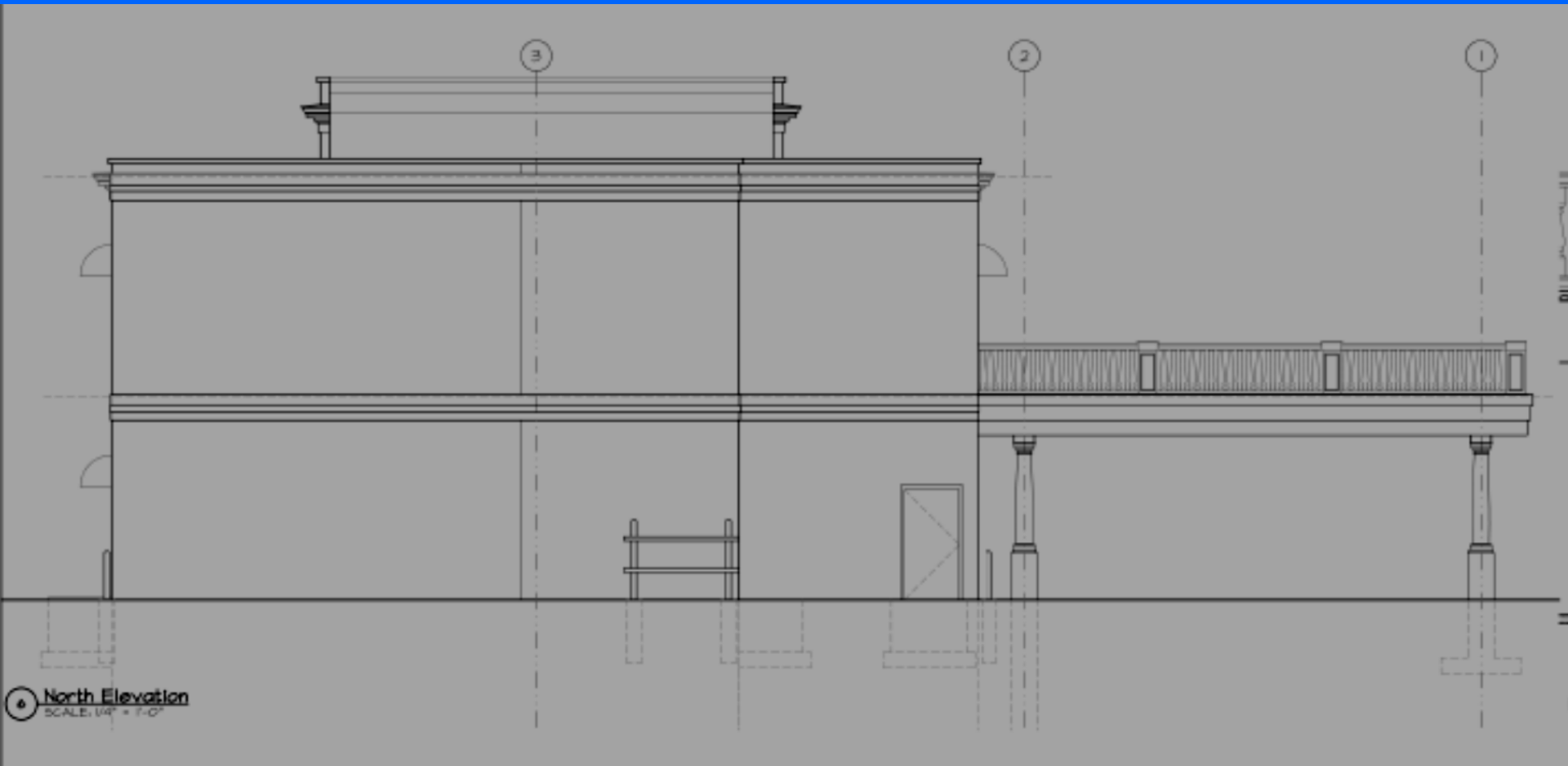
N. CASS ST.
66' PUBLIC RIGHT OF WAY



Elevated deck addition



Plan of new deck



Rear, north elevation

