

FLOODPLAIN OVERLAY ZONES

“FW” Floodway overlay zone

“FF” Flood fringe overlay zone

“FSD” Flood storage overlay zone

FLOODPLAIN OVERLAY ZONES

“FW” Floodway overlay zone

Deeper, faster moving water

Purpose: insure that the flow of water is not impeded during periodic flooding, and that flood heights upstream are not increased.

Permitted uses include agricultural, non structural industrial/commercial, open space, water dependent uses, public utilities and earth grading activities

FLOODPLAIN OVERLAY ZONES

“FF” Flood fringe overlay zone

Contains shallow, slow moving water,

Purpose: allow limited development so long as adequate floodproofing measures are followed, flood storage areas are not reduced during periodic flooding and flood heights are not increased upstream

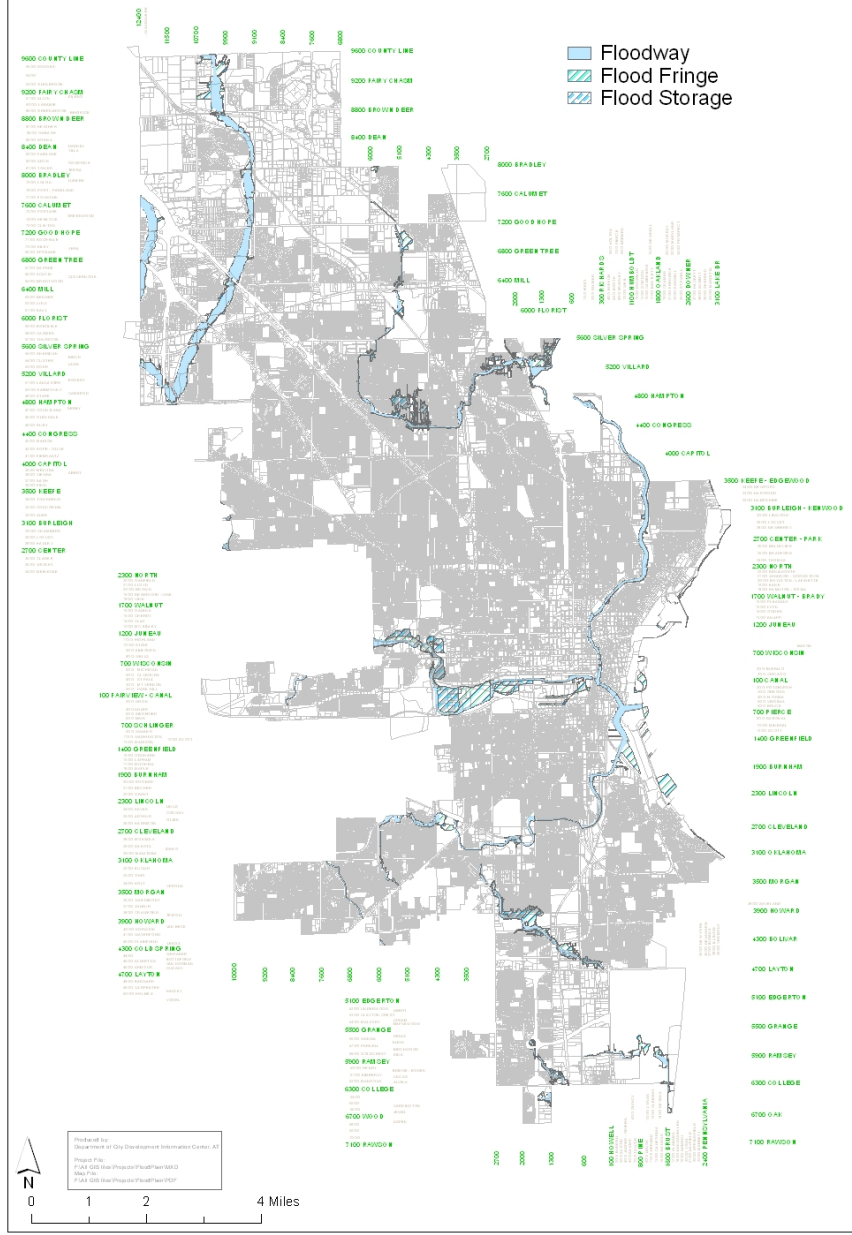
FLOODPLAIN OVERLAY ZONES

“FSD” Flood storage overlay zone

storage of flood waters has been taken into account during analysis in reducing the regional flood discharge, permits development provided development standards are met

Purpose: reduce the regional flood discharge

City of Milwaukee Floodplains



Prepared by:
 Department of City Development Information Center, AT
 Project File:
 P:\A\GIS\Map\Projects\Flood\Flood000
 Map File:
 P:\A\GIS\Map\Projects\Flood\Flood000