



**WISCONSIN DEPARTMENT**  
*of* **HEALTH SERVICES**

# **City of Milwaukee Board of Health Orientation**

Matthew M. Collie  
Southeast Region Director  
DHS 140 Program Supervisor  
Division of Public Health  
May 2, 2024

# Objectives of Today's Presentation

- Introduce Wisconsin governmental public health system
- Review the structure and responsibilities of local health departments and local health officers
- Review the structure and responsibilities of boards of health
- Provide a review of DHS and DPH's organizational structure
- Share DHS resources

# The Public Health System

What is public health?

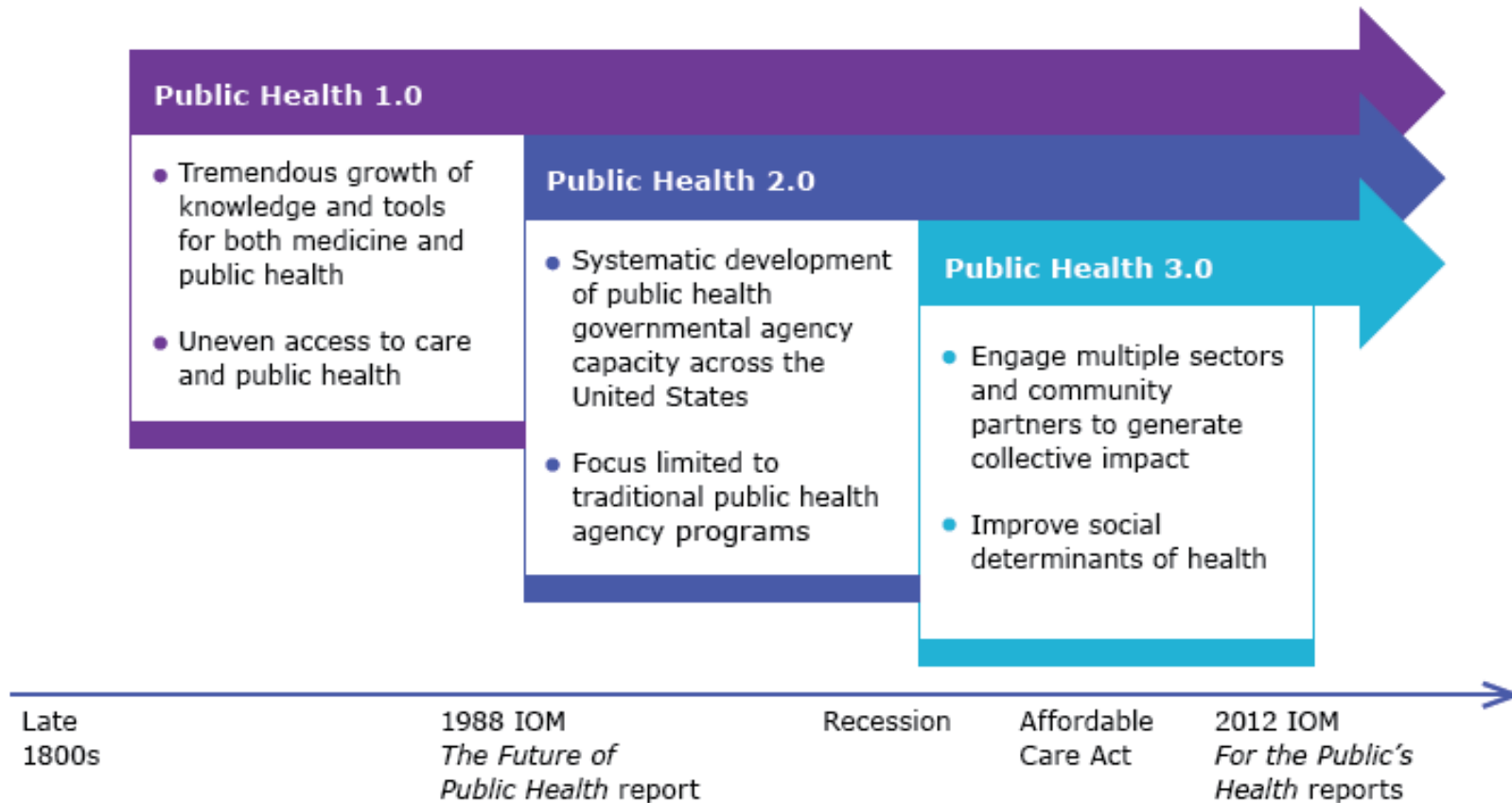
# What is Public Health?

## Definition

"Public health is what we, as a society, do collectively to assure the conditions in which (all) people can be healthy."

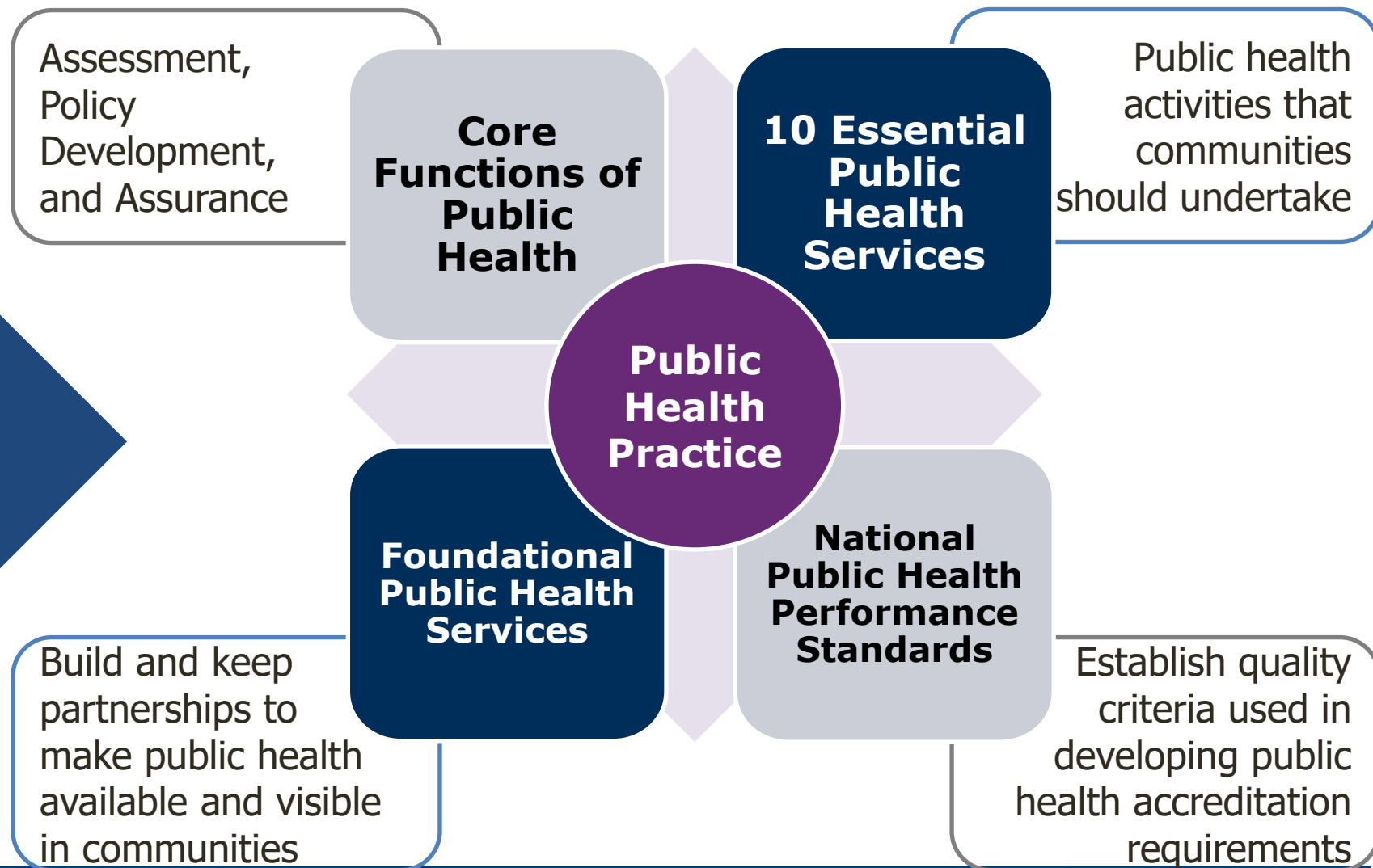
"The Future of Public Health," Institute of Medicine, 1988

# Evolution of Public Health Practices



# What is Public Health?

## Functions and Services



# What is the Public Health System?

## Layers and Types

- The health system: health care, public health, and individual factors
- Layers: federal, Tribal, state, regional, and local
- Types: governmental and non-governmental

# Wisconsin Public Health Authorities

- The **Department of Health Services** is the lead agency for public health and maintains the public health system.
- **Local boards of health** are the policymaking bodies for local health departments.
- **Local health departments** are responsible for the public health services in their jurisdictions.





# **Local Health Departments and Local Health Officers**

Structure, required services, and functions

# Local and Tribal Health Departments



- Are responsible for public health services in their jurisdiction
- Include several structures: city, city-city, multiple municipality, city-county, county, multi-county, and Tribal

# Local Health Department Levels (Wisconsin Stat. § 251.05)



At each level, a health department must meet level requirements along with the requirements of all preceding levels.

# **Required Services**

## **All Local Health Departments**

- Surveillance and investigation
- Communicable disease control
- Other disease prevention
- Emergency preparedness and response
- Health promotion
- Human health hazard control
- Policy and planning
- Leadership and organizational competencies
- Generalized public health nursing services
- Annual reporting

# **Additional Required Services Level II Health Departments**

- Workforce development
- Quality improvement
- Performance management
- Embedded public health nursing services

# **Additional Required Services Level III Health Departments**

- Community health strategist
- Population health expertise
- Social determinants of health
- Additional performance management and quality improvement
- Public health nursing services embedded

# Functions of the Public Health Officer

- Manage health department in compliance with state requirements
- Create an annual report for board of health
- Recommend long-term goals of the health department and community using:
  - Strategic planning
  - Community health improvement planning
- Recommend budget
- Recommend community-wide policies to promote health and well-being for board approval

# Boards of Health

Local boards are an essential link between public health departments and healthy communities.



# Six Functions of Public Health Governance

1. Policy development
2. Resource stewardship
3. Legal authority
4. Partner engagement
5. Continuous improvement
6. Oversight

Source: 2012 National Association of Local Boards of Health  
<https://www.nalboh.org/page/GovernanceResources>

# Board of Health Functions

Wisconsin Statute § 251.04 outlines powers and duties:

- Govern the local health department
- Assure the local health department is a Level I, Level II, or Level III
- May adopt regulations for its own guidance and for the governance of the local health department necessary to protect and improve public health. The regulations may be less stringent than, and may not conflict with, state statutes and rules of the department
- Report to the state department by rule
- Meet at least quarterly

# Board of Health Functions

- Assess public health needs and advocate for the provision of reasonable and necessary public health services
- Develop policy and provide leadership that fosters local involvement and commitment, that emphasizes public health needs and that advocates for equitable distribution of public health resources and complementary private activities commensurate with public health needs
- Assure measure are taken to provide an environment in which individuals can be healthy
- Unless specified otherwise by ordinance, shall employ qualified public health professionals

# Board of Health Responsibilities

- Educate yourself on your community and its public health status.
- Educate yourself on your board and local department's history, goals, achievements, and current situation.
- Review statutes, administrative rules and local policies.
- Participate fully in open, constructive dialogue regarding local public health both in and out of meetings.
- Function as a policy-maker not as an administrator.
- Link the community and the local health department.
- Represent public health to the community.
- Stand behind decisions of the board and its director or health officer.
- Anticipate trends likely to affect the local health department.

# Home Rule

- Home rule is the ability of a political subdivision to determine its local affairs and government.
- Counties may exercise any organizational or administrative power.

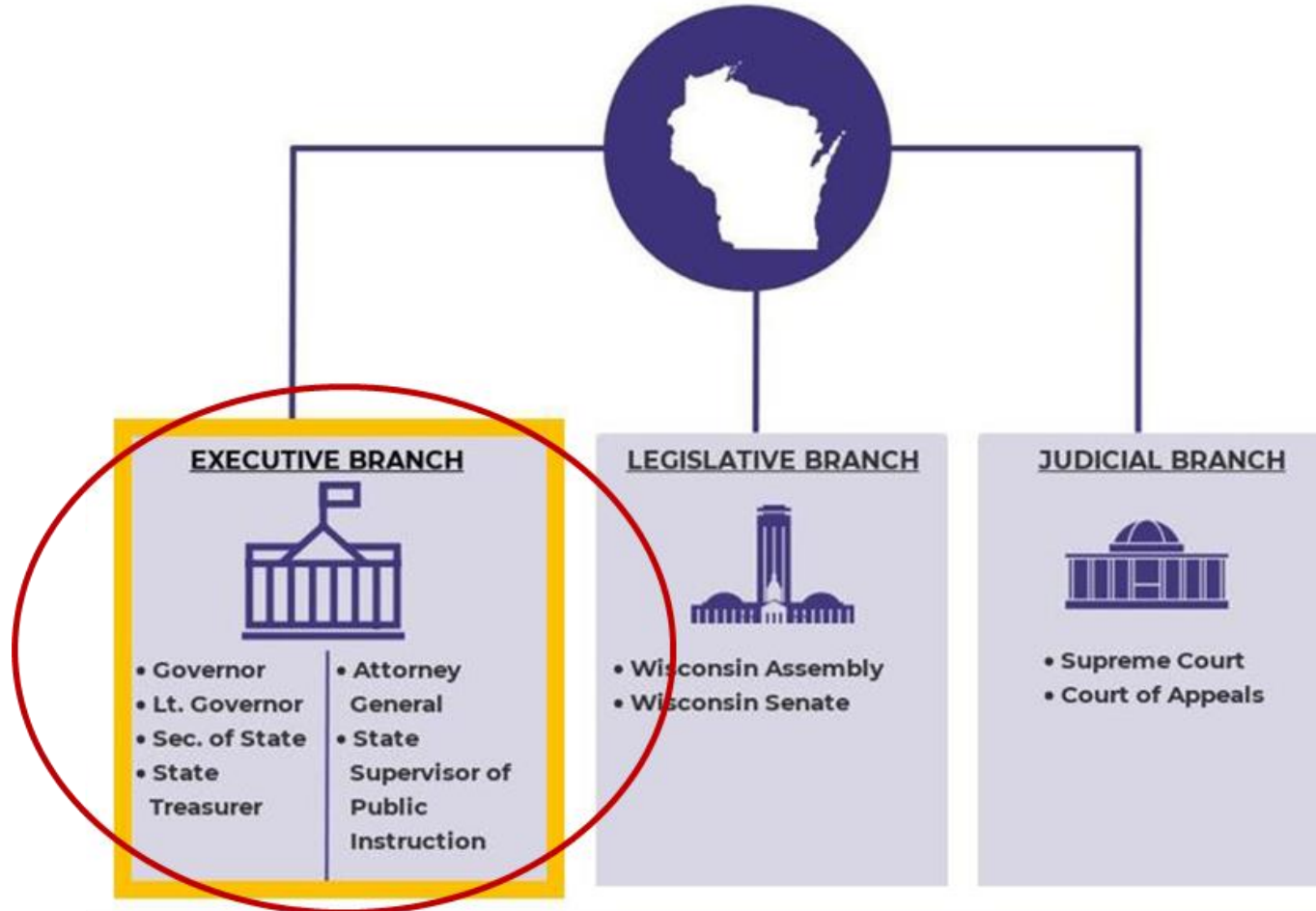
# Board of Health Resources

- Wisconsin Association of Local Health Departments and Boards (WALHDAB)  
[www.walhdab.org/page/boardofhealthtools](http://www.walhdab.org/page/boardofhealthtools)
- Wisconsin Counties Association (WCA)  
[www.wicounties.org/](http://www.wicounties.org/)
- Wisconsin Division of Public Health Regional Offices  
[www.dhs.wisconsin.gov/lh-depts/boh-info.htm](http://www.dhs.wisconsin.gov/lh-depts/boh-info.htm)
- National Association of Local Boards of Health  
[nalboh.site-ym.com](http://nalboh.site-ym.com)

# **The Department of Health Services**

Everyone living their best life.

# Executive Branch







## Wisconsin State Agencies



Health Services  
(DHS)



Administration  
(DOA)



Ag, Trade and  
Consumer  
Relations (DATCP)



Children and  
Families (DCF)



Corrections  
(DOC)



Financial  
Institutions (DFI)



Natural  
Resources (DNR)



Office of the  
Commissioner of  
Insurance (OCI)



Public  
Instruction  
(DPI)



Revenue (DOR)



Safety and  
Professional  
Services (DSPS)

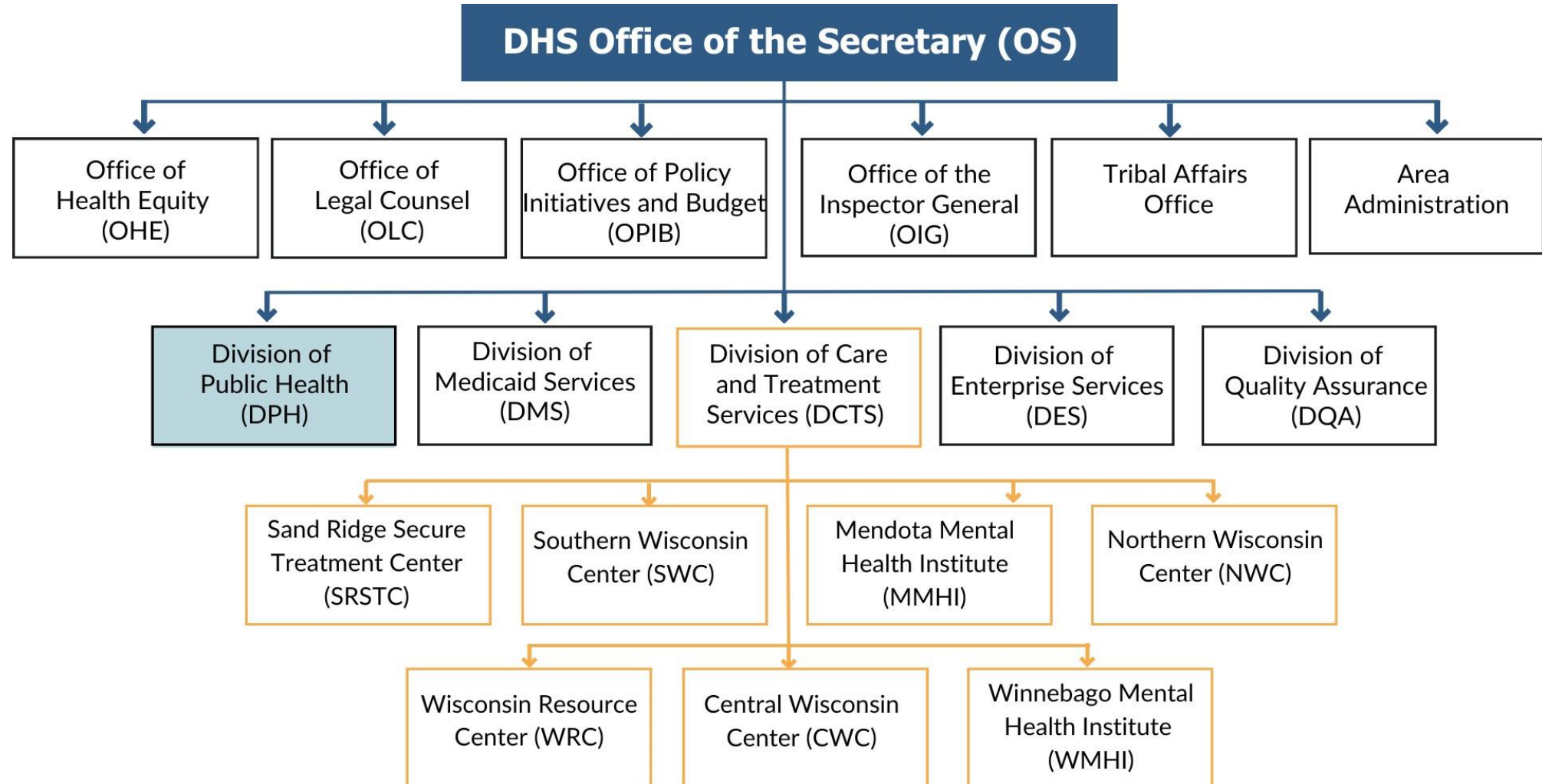


Tourism



Transportation  
(WisDOT)

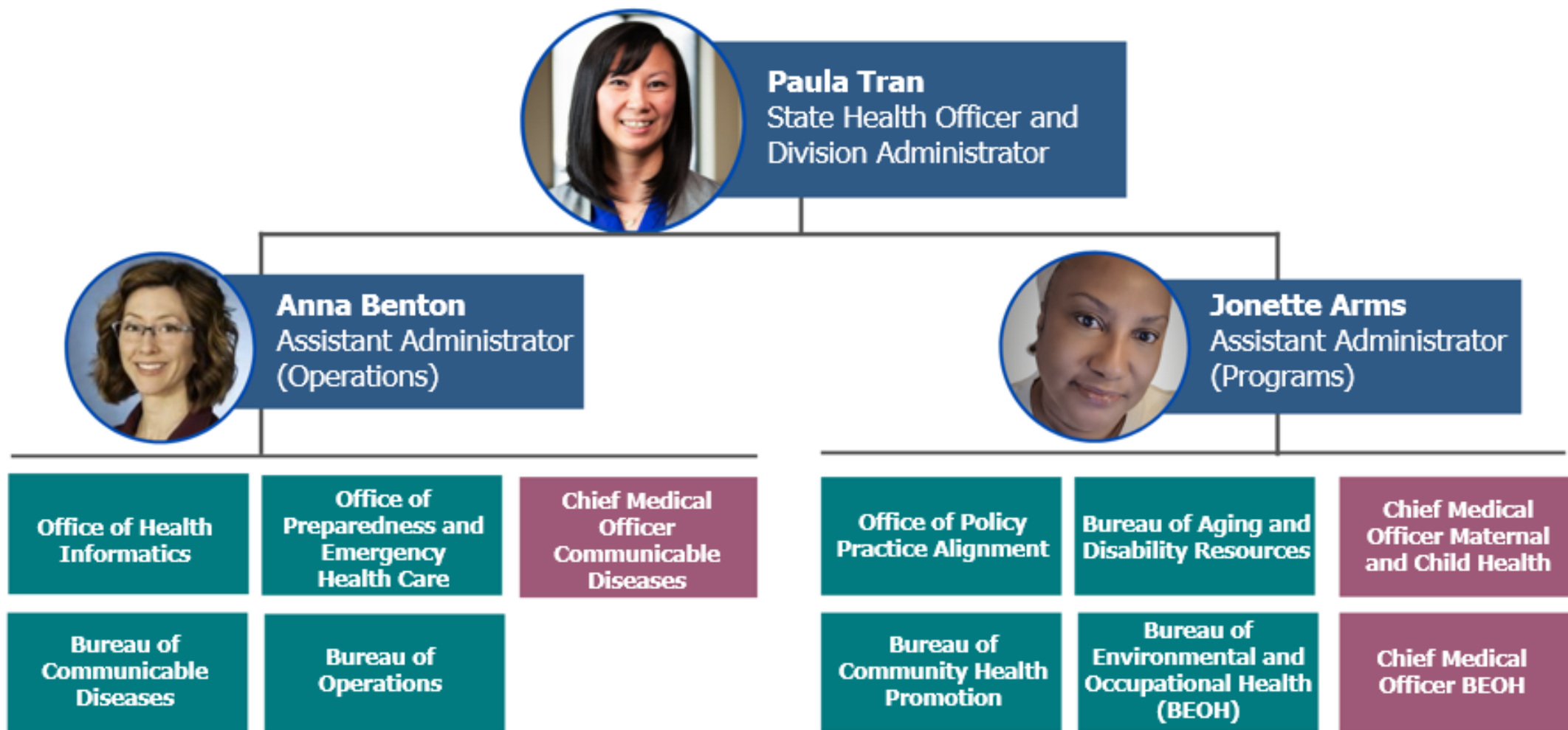
# Department of Health Services



# **The Division of Public Health**

Strengthening Wisconsin's collective capacity to assure the conditions in which all people can be healthy

# DPH Structure



# Bureau of Aging and Disability Resources (BADR)

## Responsibility

BADR is responsible for the development of policy and the management of programs that serve aging adults and those with disabilities. Partners with aging and disability resource centers (ADRCs).

## Offices

- Aging
- Promotion of Independent Living
- Blind and Visually Impaired
- Deaf and Hard of Hearing
- Physical Disabilities and Independent Living
- Resource Center Development

# Bureau of Community Health Promotion (BCHP)

## Responsibility

BCHP works to ensure the health and well-being of all Wisconsin families and their communities throughout the lifespan by promoting maternal and child health, chronic disease prevention, harm prevention, and other programs.

## Sections

- Chronic Disease Prevention and Cancer Control Section
- Family Health Section
- The Tobacco Prevention and Control Section
- The Women, Infants, and Children (WIC), and Nutrition Section

# Bureau of Environmental and Occupational Health (BEOH)

## Responsibility

BEOH works to prevent and control exposure to environmental hazards while increasing public awareness of hazards and disease.

## Sections

- Health Hazard Evaluation Section
- Lead and Asbestos Section
- Radiation Protection Section

# Office of Preparedness and Emergency Health Care (OPEHC)

## Responsibility

OPEHC is responsible for public health and hospital preparedness.

## Sections

- Emergency Health Care and Preparedness
  - Supports state systems to prepare for public health threats and emergencies
  - Volunteer registry (WEAVR, MRC)
  - Pandemic influenza
  - Strategic National Stockpile
  - Partner communication and alerting
- State Trauma Program



# Office of Health Informatics (OHI)

## Responsibility

OHI provides timely, accurate data and vital records.

## Sections

- State Registrar/Vital Records Section
- Health Analytics Section
- Public Health Information Network (PHIN) Coordinator/Informatics Architecture Section

# Bureau of Communicable Diseases (BCD)

## Responsibility

BCD prevents and controls communicable diseases among Wisconsinites.

## Sections

- Communicable Diseases Epidemiology Section
- Harm Reduction Section
- Immunization Section

# Bureau of Operations (BOO)

## Responsibility

BOO provides operational and administrative support.

## Sections

- Operations and administration
- Budget development, analysis, and monitoring
- Communications and health information
- Division policies and procedures
- Grant processing and contracting
- Web content
- Records management

# Office of Policy and Practice Alignment (OPPA)

## Responsibility

### OPPA:

- Builds and supports policies and practices for the public health system.
- Works to strengthen the public health system across the state.
- Maintains strong working relationships with Wisconsin's 84 local and 11 Tribal health departments.
- Provides technical assistance and consultation on Foundational Public Health Capabilities.

## Sections

- Policy Section
  - State Health Improvement Plan
- Regional Offices
  - Regional Directors
  - DHS 140 Reviews

# DPH Regional Contacts

## **Matthew M. Collie**

Southeastern Region Director

DHS 140 Program Supervisor

819 N 6th St, Room 609A

Milwaukee, WI 53203-1604

608-354-7932

[matthew.collie@dhs.wisconsin.gov](mailto:matthew.collie@dhs.wisconsin.gov)

## **Deborah L. Heim PhD, MN, RN, PHNA-BC**

Public Health Nurse Consultant

819 N 6th St, Room 609A

Milwaukee, WI 53203-1604

414-227-4775

[Deborah.Heim@dhs.wisconsin.gov](mailto:Deborah.Heim@dhs.wisconsin.gov)

# Questions?



# Sources

- 2015 Local Board of Health National Profile  
<http://nacchoprofilestudy.org/wp-content/uploads/2014/02/Local-Board-of-Health-Profile.pdf>
- 2012 National Association of Local Boards of Health  
<https://www.nalboh.org/page/GovernanceResources>
- DHS Webpage: Local Public Health  
<https://www.dhs.wisconsin.gov/lh-depts/counties/index.htm>
- “The Future of Public Health,” Institute of Medicine, 1988  
<https://www.ncbi.nlm.nih.gov/books/NBK218218/>

# Sources

- CDC – 10 Essential Public Health Services  
<https://www.cdc.gov/publichealthgateway/publichealthservices/essentialhealthservices.html>
- Centers for Disease Control and Prevention: Public Health 3.0 A Call to Action  
[https://www.cdc.gov/pcd/issues/2017/17\\_0017.htm](https://www.cdc.gov/pcd/issues/2017/17_0017.htm)
- Wisconsin Legislative Council Issue Brief, May 2023: Home Rule  
[https://docs.legis.wisconsin.gov/misc/lc/issue\\_briefs/2023/local\\_government/ib\\_home\\_rule\\_pw\\_2023\\_05\\_08](https://docs.legis.wisconsin.gov/misc/lc/issue_briefs/2023/local_government/ib_home_rule_pw_2023_05_08)
- Wisconsin Legislator Briefing Book 2019-20  
[https://docs.legis.wisconsin.gov/misc/lc/briefing\\_book](https://docs.legis.wisconsin.gov/misc/lc/briefing_book)