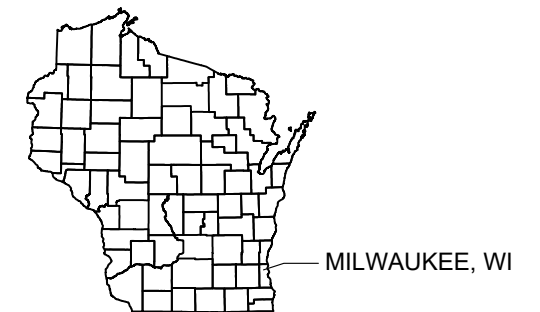


VETCP 172617

INDEX	
Sheet Number	Sheet Title
T 0.10	TITLE
C 0.20	WATER & SANITARY DETAILS
C 0.30	STORM & EROSION CONTROL DETAILS
C 0.40	ROAD DETAILS
C 1.00	GRADING & EROSION CONTROL PLAN
C 1.10	BASIN DETAILS
C 2.00	ROAD & STORM PLAN & PROFILE
C 3.00	WATER MAIN & SANITARY SYSTEM MAP
C 3.10	WATERMAIN & SANITARY PLAN & PROFILE

PROJECT LOCATION



NOTE:
THE SUBSURFACE UTILITY QUALITY INFORMATION IN THIS PLAN IS LEVEL D.
THIS UTILITY QUALITY LEVEL WAS DETERMINED ACCORDING TO THE
GUIDELINES OF CI/ASCE 38-02 ENTITLED "STANDARD GUIDELINES FOR THE
COLLECTION AND DEPICTION OF EXISTING SUBSURFACE UTILITY DATA."

THE CONTRACTOR SHALL CALL THE WISCONSIN ONE CALL SYSTEM AT 811 BEFORE COMMENCING EXCAVATION.



Know what's **below**.
Call before you dig.



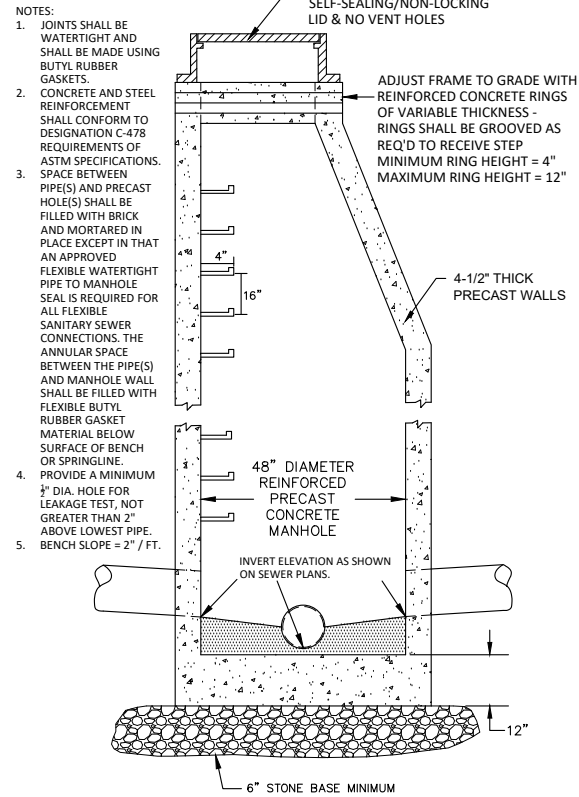
PROJECT NO.

72617

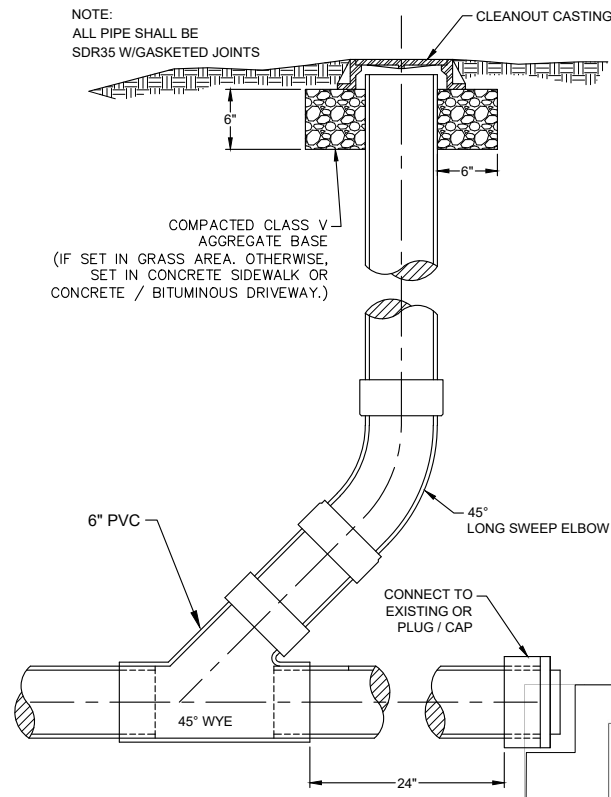
T 0.10

of 9

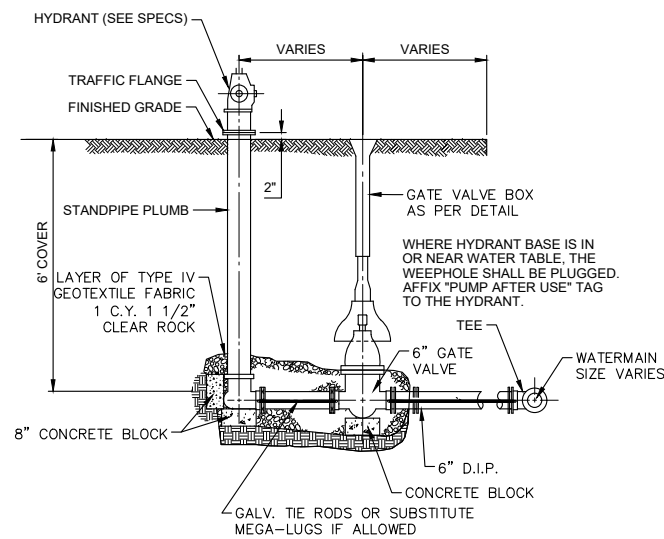
Save: 1/23/2024 2:58 PM jstone Plot: 1/23/2024 3:06 PM x:\UWV\UTCHP172617\5-final-dsgn\51-drawings\10-Civil\cad\dwg\sheet172617TL&DET.dwg



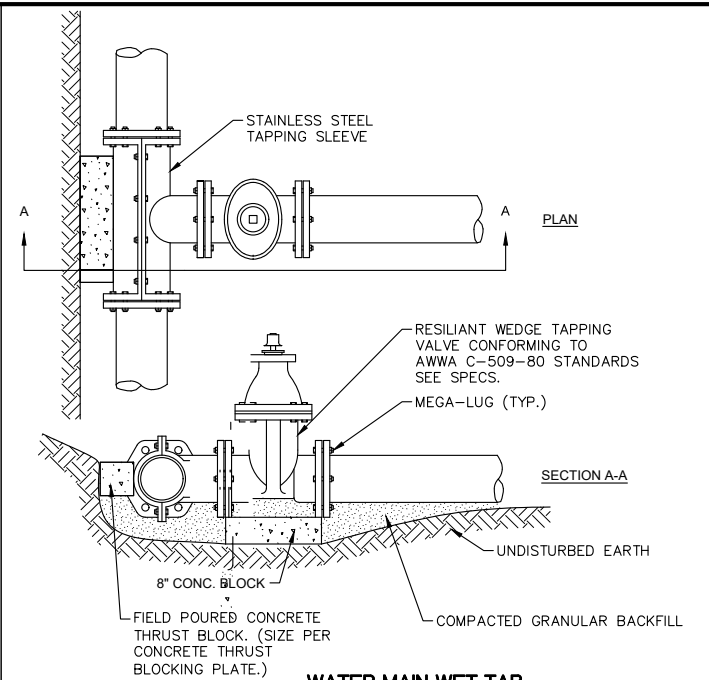
SANITARY SEWER MANHOLE



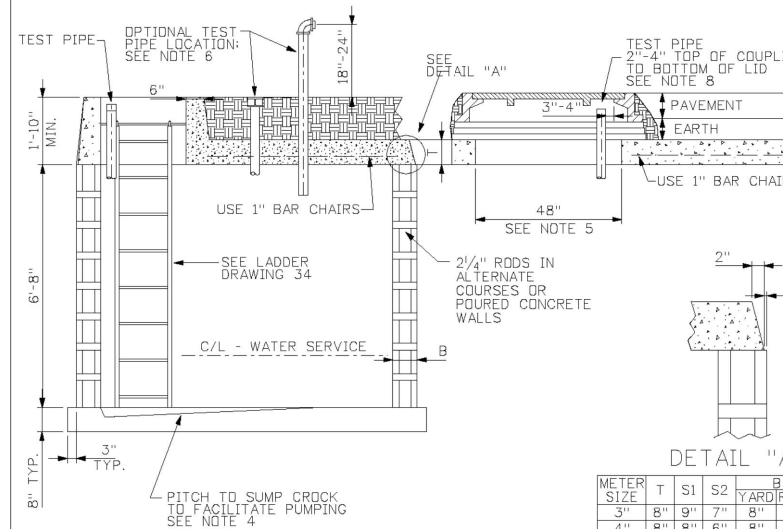
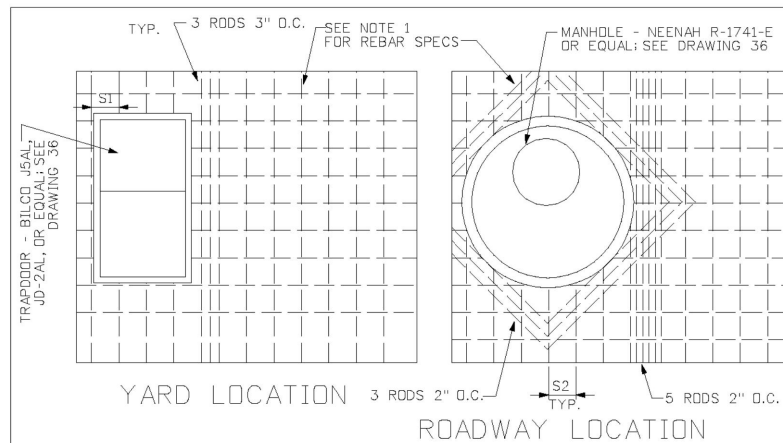
IN LINE CLEANOUT



HYDRANT AND GATE VALVE INSTALLATION



WATER MAIN WET TAP



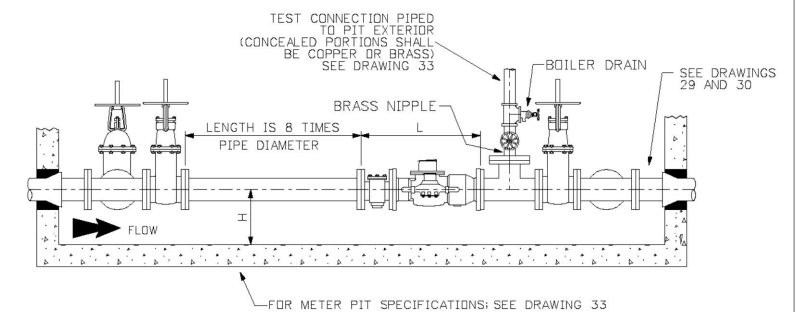
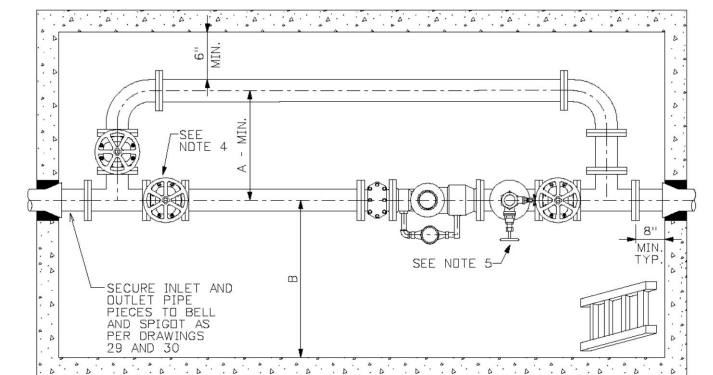
METER SIZE	T	S1	S2	YARD/ROAD
3"	8"	9"	7"	8"
4"	8"	8"	6"	8"
6"	8"	7"	5"	8"
8"	10"	6"	5 1/2"	8"
10"	10"	5"	4 1/2"	8"

MILWAUKEE Technical Services Group

DESCRIPTION: METER PIT SPECIFICATIONS

DRAWN BY: SPW DATE: 6-12-2002 DRAWING NO.: 33

FOR NOTES REFERENCED ON THIS DRAWING, SEE DRAWING 33N



METER	BY PASS	TEST VALVE	L	A	B	H
2"	2"	2"	17"	36"	40"	12"-24"
3"	3"	2"	24"	36"	40"	12"-24"
4"	4"	2"	29"	36"	42"	12"-24"
6"	6"	3"	36"	42"	48"	15"-24"
8"	8"	3"	42"	42"	48"	18"-24"
10"	10"	3"	48"	48"	48"	20"-24"

MILWAUKEE Technical Services Group

DESCRIPTION: METER SETTING PIT TYPE

DRAWN BY: SPW DATE: 6-12-2002 DRAWING NO.: 22

FOR NOTES REFERENCED ON THIS DRAWING, SEE DRAWING 22N

SEH Project	172617	Rev.#	Revision Issue Description	Date	Rev.#	Revision Issue Description	Date
Drawn By	--
Designed By	--
Checked By	--



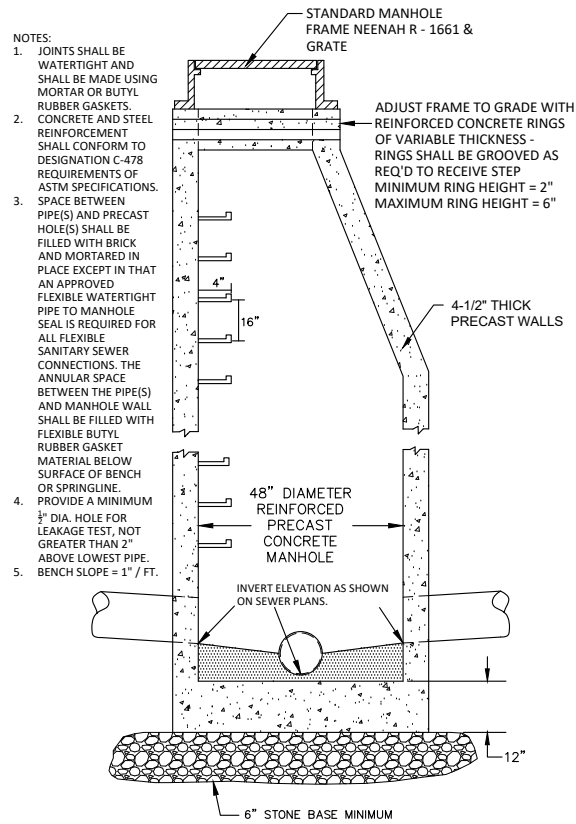
VETERANS COMMUNITY PROJECT
MILWAUKEE, WISCONSIN

WATER & SANITARY DETAILS

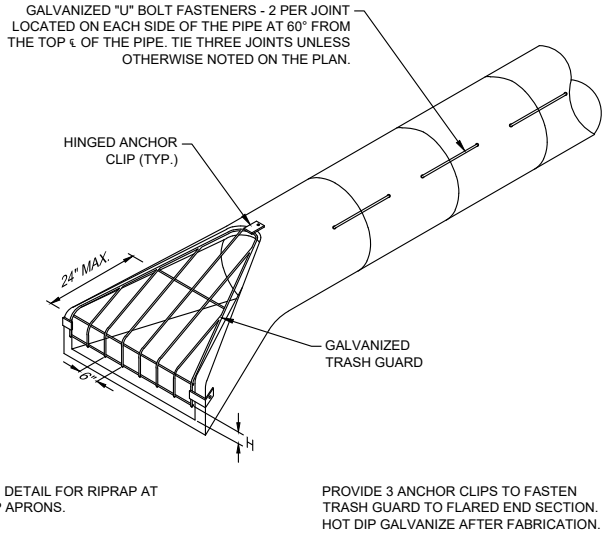
C 0.20

of 9

Save: 1/23/2024 2:58 PM J:\stone Plot: 12/23/2024 3:06 PM x:\UZ\VV\ETCP172617\5-final-dsgn\51-drawings\10-Civil\cad\dwg\sheet172617TL&DET.dwg



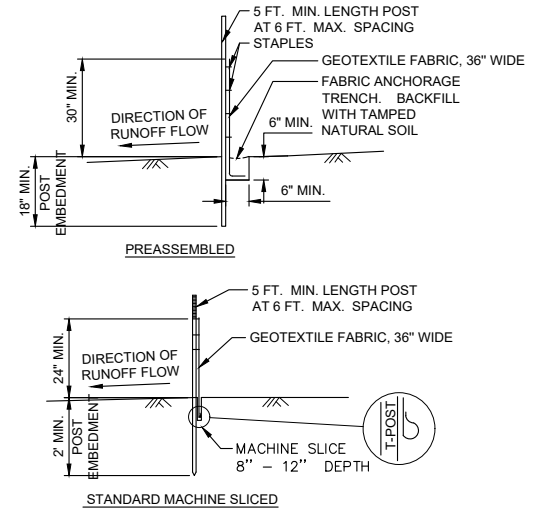
STORM SEWER MANHOLE



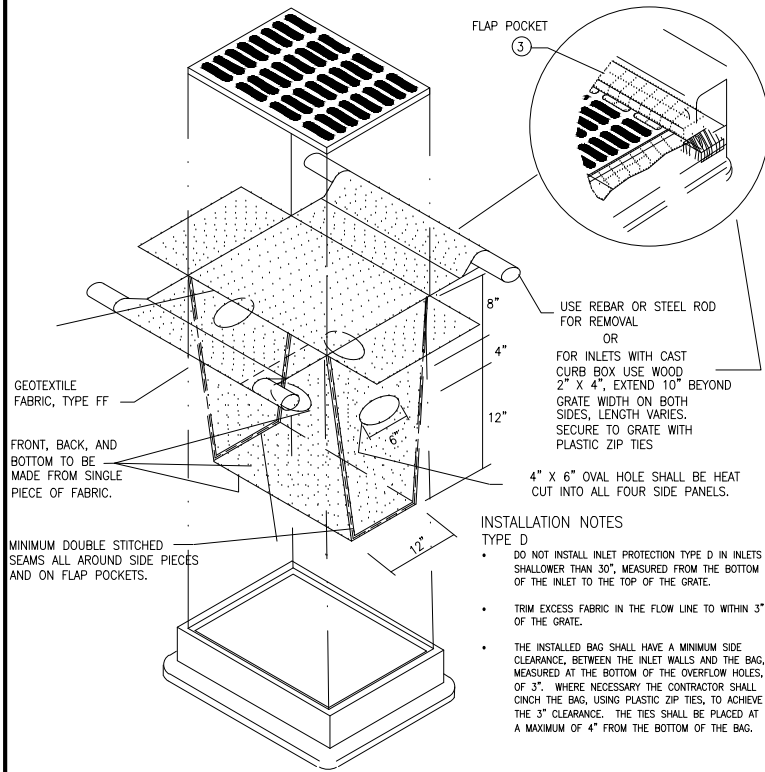
TRASH GUARD SIZING			
PIPE SIZE	BAR	"H"	BOLTS
12"-18"	3/4"Ø	4"	3/8"
21"-42"	1"Ø	6"	3/4"
48"-72"	1 1/2"Ø	12"	1"

"U" BOLT REQUIREMENTS		
PIPE SIZE	BOLT DIA.	LENGTH
21" & LESS	1/2"	24"
24" TO 36"	5/8"	24"
42" TO 54"	3/4"	24"
60" & GREATER	1"	24"

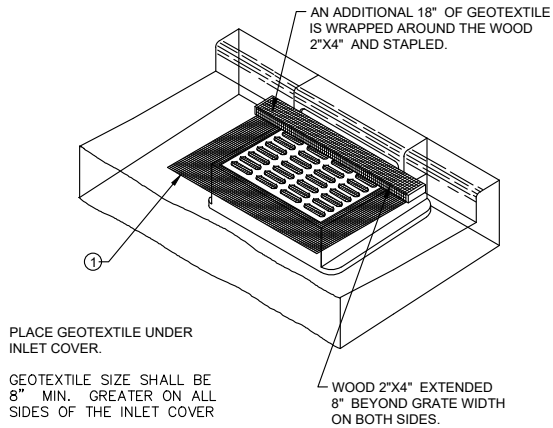
RCP FLARED END SECTION WITH TRASH GUARD



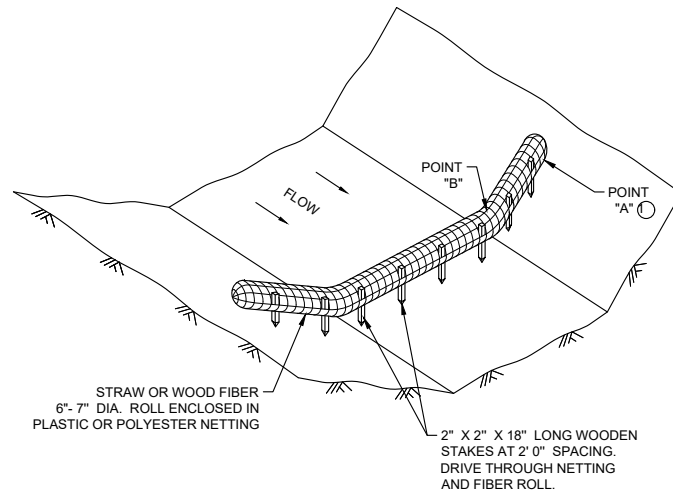
SILT FENCE



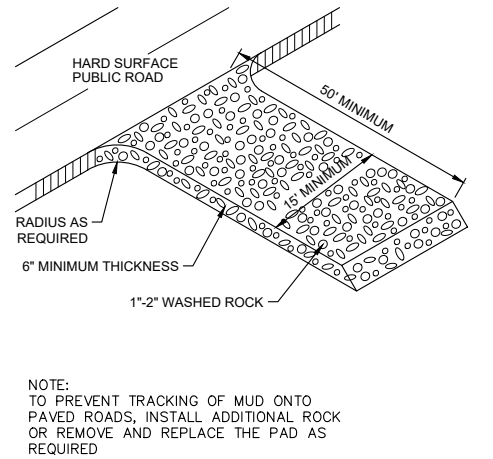
INLET PROTECTION, TYPE D



INLET PROTECTION - TYPE C



BIOROLL DITCH CHECK



ROCK CONSTRUCTION ENTRANCE

SEH Project	172617	Rev.#	Revision Issue Description	Date	Rev.#	Revision Issue Description	Date
Drawn By	--
Designed By	--
Checked By	--



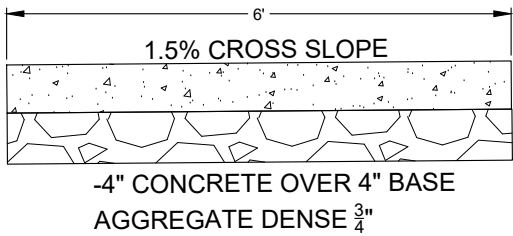
VETERANS COMMUNITY PROJECT
MILWAUKEE, WISCONSIN

STORM & EROSION CONTROL DETAILS

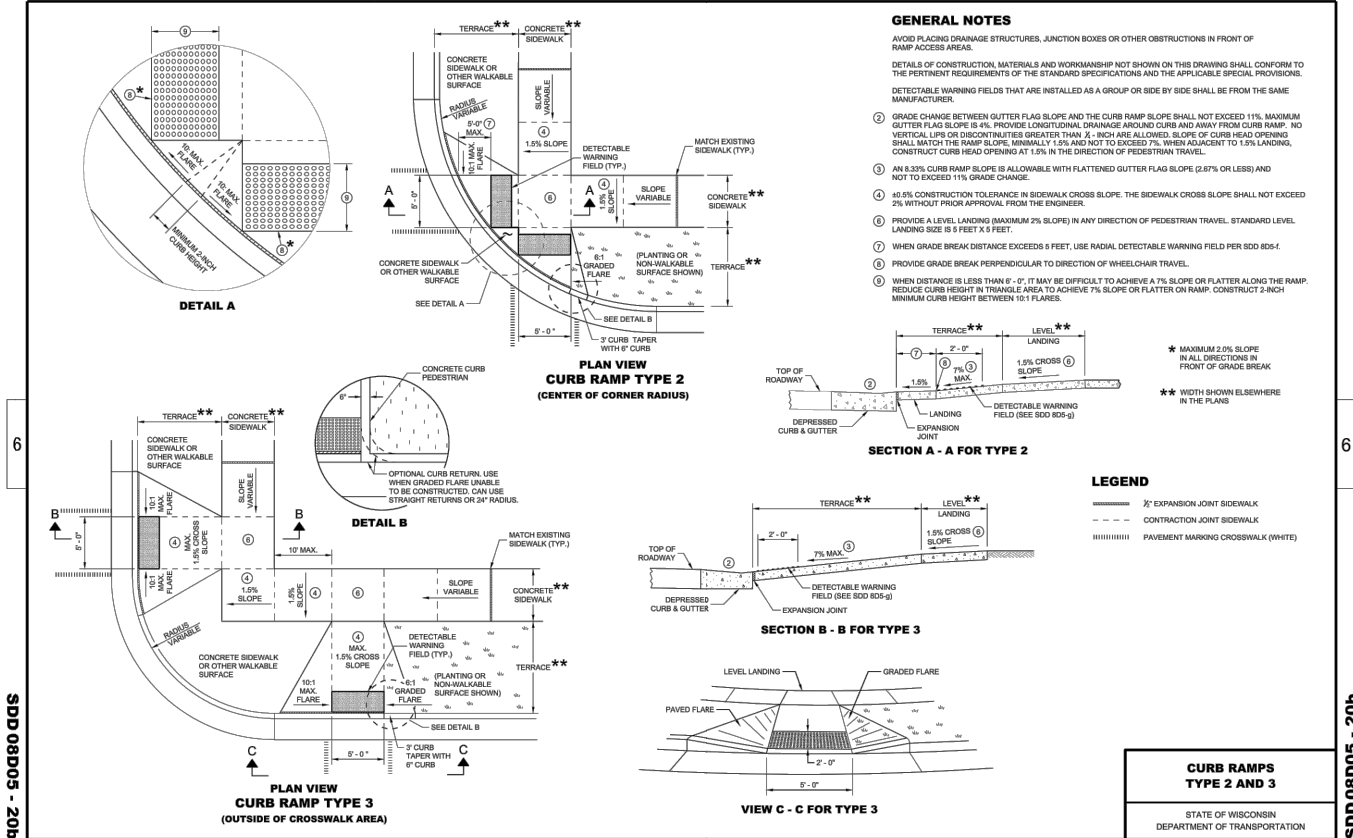
C 0.30

of 9

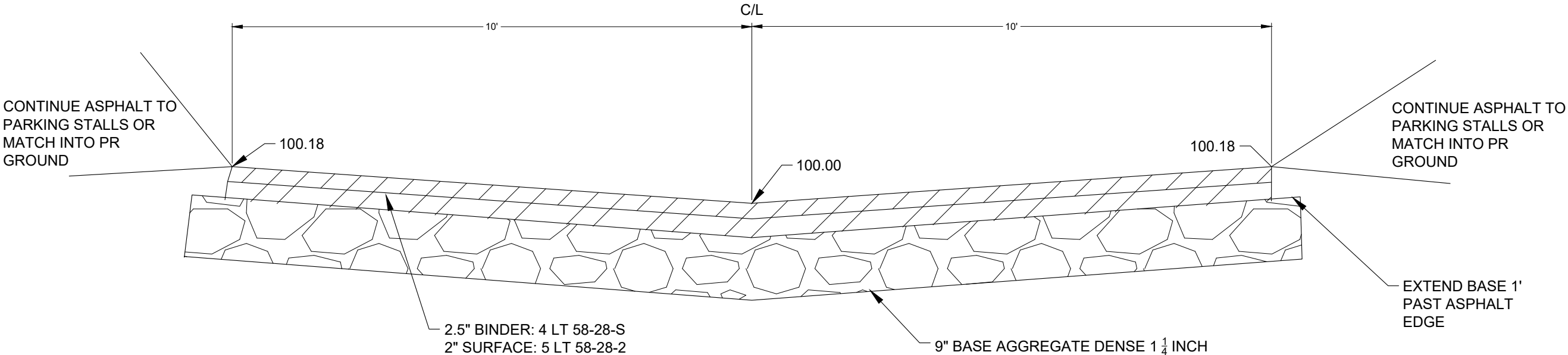
SIDEWALK DETAIL



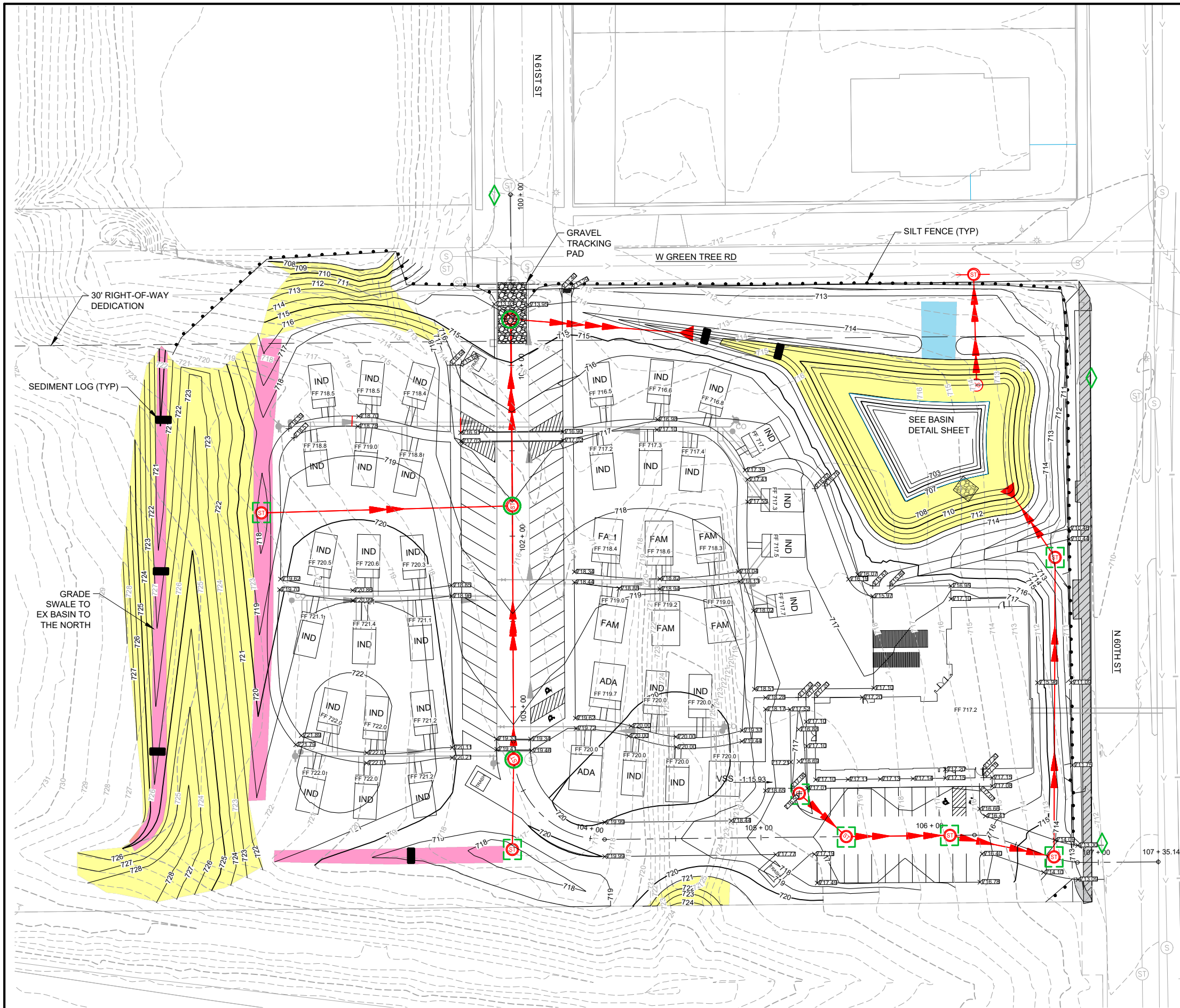
SDD 08D05-b Curb Ramps Types 2 and 3



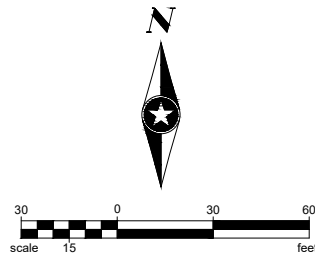
TYPICAL ROADWAY SECTION



Save: 1/23/2024 2:58 PM\jstone Plot: 123/2024 3:07 PM x:\Z\WV\ETCP1726175-final-dsgn\51-drawings\10-Civil\cad\dwg\sheet172617GRD&EC.dwg

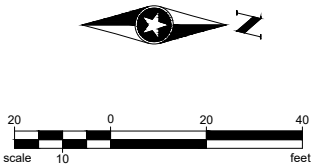
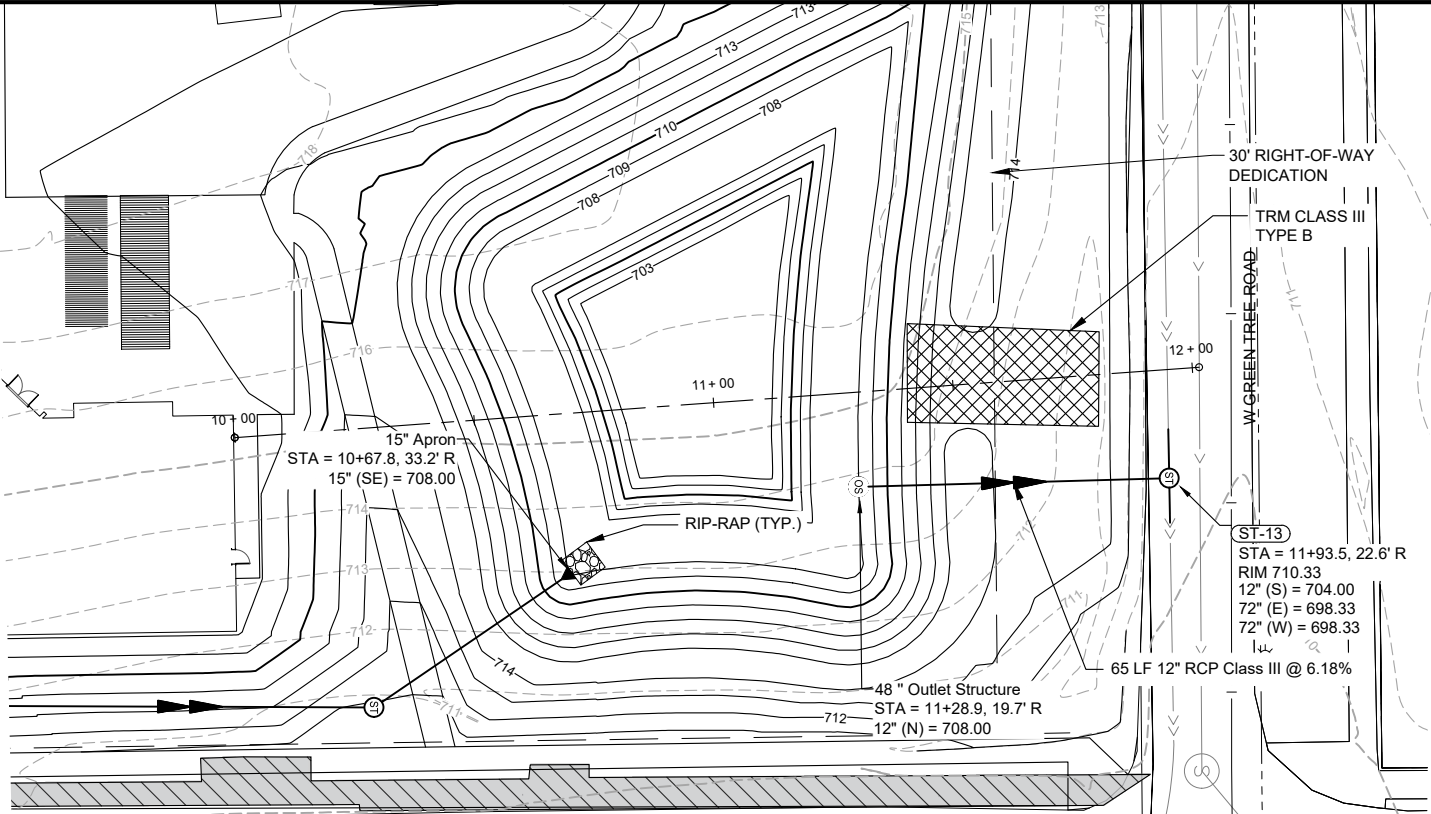


- LEGEND**
- INLET PROTECTION TYPE 'A'
 - INLET PROTECTION TYPE 'C'
 - INLET PROTECTION TYPE 'D'
 - SEDIMENT LOG
 - SILT FENCE
 - CLASS I - TYPE 'A' ECRM
 - CLASS II - TYPE 'B' CHANNEL MAT
 - CLASS III - TYPE 'B' TRM
 - REMOVE SIDEWALK



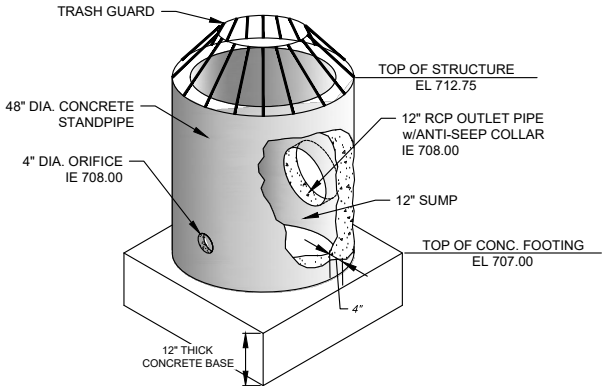
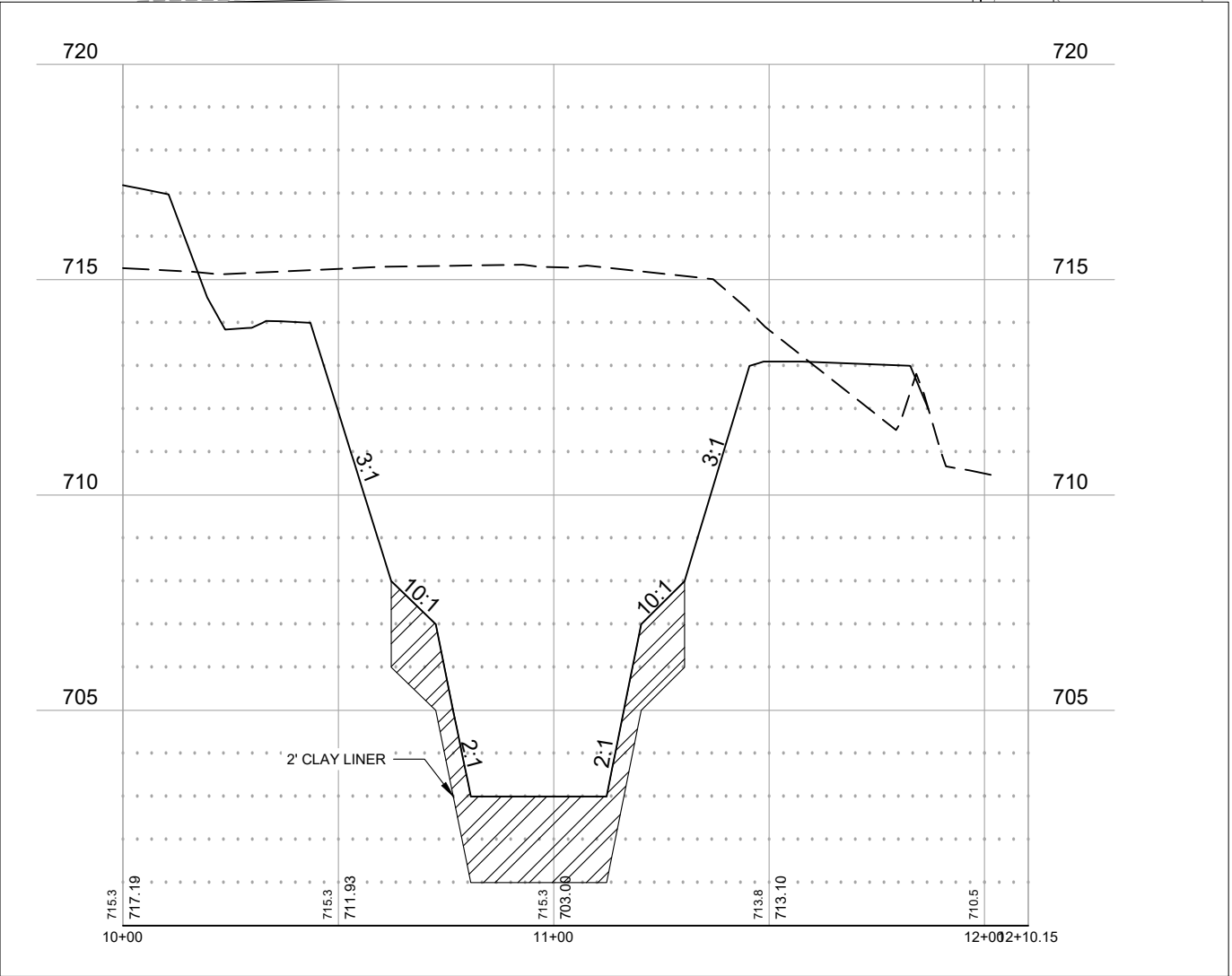
EROSION CONTROL NOTES:

- POST WDNR CERTIFICATE OF PERMIT COVERAGE ON-SITE AND MAINTAIN UNTIL CONSTRUCTION ACTIVITIES HAVE CEASED, AND THE SITE IS STABILIZED.
- KEEP A COPY OF THE CURRENT EROSION CONTROL PLAN ON SITE THROUGHOUT THE DURATION OF THE PROJECT.
- SUBMIT PLAN REVISIONS OR AMENDMENTS TO THE WDNR AT LEAST 5 DAYS PRIOR TO FIELD IMPLEMENTATION.
- PERMIT HOLDER IS RESPONSIBLE FOR ROUTINE SITE INSPECTIONS AT LEAST ONCE EVERY 7 DAYS AND WITHIN 24 HOURS AFTER A RAINFALL EVENT OF 1/2" OR GREATER. CORRECT ANY DAMAGED STRUCTURES IMMEDIATELY. KEEP INSPECTION REPORTS ON-SITE AND MAKE THEM AVAILABLE UPON REQUEST.
- WHEN POSSIBLE: PRESERVE EXISTING VEGETATION, MINIMIZE LAND-DISTURBING CONSTRUCTION ACTIVITY ON SLOPES OF 20% OR MORE, MINIMIZE SOIL COMPACTION, AND PRESERVE TOPSOIL.
- CONSTRUCT AND MAINTAIN ALL EROSION AND SEDIMENT CONTROL MEASURES IN ACCORDANCE WITH THE "WDNR STORMWATER CONSTRUCTION AND POST-CONSTRUCTION TECHNICAL STANDARDS".
- EROSION CONTROL MEASURES MAY NEED TO BE ADJUSTED TO MEET FIELD CONDITIONS AT THE TIME OF CONSTRUCTION.
- INSPECT AND MAINTAIN ALL EROSION CONTROL MEASURES UNTIL THE AREA(S) SERVED HAVE 80% OR MORE ESTABLISHED VEGETATIVE COVER AS DETERMINED BY THE ENGINEER.
- INSTALL PERIMETER EROSION CONTROLS AND TRACKING PAD(S) PRIOR TO ANY LAND-DISTURBING ACTIVITIES, INCLUDING CLEARING AND GRUBBING. USE WDNR TECHNICAL STANDARD #1057 FOR CONSTRUCTION ENTRANCE(S).
- SWEEP/CLEAN UP ALL SEDIMENT/TRASH THAT MOVES OFF-SITE DUE TO CONSTRUCTION ACTIVITY OR STORM EVENTS BEFORE THE END OF THE SAME WORKDAY OR AS DIRECTED. SEPARATE SWEEP MATERIALS (SOILS AND TRASH) AND DISPOSE OF APPROPRIATELY. CONTRACTOR IS RESPONSIBLE FOR CONTROLLING DUST PER WDNR TECHNICAL STANDARD #1068.
- PROPERLY DISPOSE OF ALL WASTE AND UNUSED BUILDING MATERIALS (INCLUDING GARBAGE, DEBRIS, CLEANING WASTES, OR OTHER CONSTRUCTION MATERIALS) AND DO NOT ALLOW THESE MATERIALS TO BE CARRIED OFF-SITE.
- CONTRACTOR TO COORDINATE WITH MUNICIPALITY TO UPDATE THE LAND DISTURBANCE PERMIT TO INDICATE THE ANTICIPATED OR LIKELY DISPOSAL LOCATION(S) FOR ANY EXCAVATED SOILS AND/OR CONSTRUCTION DEBRIS THAT WILL BE HAULED OFF-SITE FOR DISPOSAL. THE DEPOSITED OR STOCKPILED MATERIAL NEEDS TO INCLUDE PERIMETER SEDIMENT CONTROL MEASURES (SUCH AS SILT FENCE, HAY BALES, FILTER SOCKS, OR COMPACTED EARTHEN BERMS).
- INSTALL INLET PROTECTION PRIOR TO LAND-DISTURBING ACTIVITIES IN THE CONTRIBUTING DRAINAGE AREA(S) AND/OR IMMEDIATELY UPON INLET INSTALLATION. COMPLY WITH WDNR TECHNICAL STANDARD #1060.
- STAGE CONSTRUCTION GRADING ACTIVITIES TO MINIMIZE THE CUMULATIVE EXPOSED AREA. CONDUCT TEMPORARY GRADING FOR EROSION CONTROL PER WDNR TECHNICAL STANDARD #1067.
- COMPLETE AND STABILIZE SEDIMENT BASIN(S)/TRAP(S) OR WET PONDS PRIOR TO MASS LAND DISTURBANCE TO CONTROL RUNOFF DURING CONSTRUCTION. REMOVE SEDIMENT AS NEEDED TO MAINTAIN 3 FEET OF DEPTH TO THE OUTLET, AND PROPERLY DISPOSE OF SEDIMENT REMOVED DURING MAINTENANCE (REFER TO NR 528). CONSTRUCT AND MAINTAIN SEDIMENT BASIN(S)/TRAP(S) PER WDNR TECHNICAL STANDARD #1063.
- INSTALL AND MAINTAIN SILT FENCING PER WDNR TECHNICAL STANDARD #1056. REMOVE SEDIMENT FROM BEHIND SILT FENCES AND SEDIMENT BARRIERS BEFORE SEDIMENT REACHES A DEPTH THAT IS EQUAL TO ONE HALF OF THE CONTROL PRACTICE'S HEIGHT. REPAIR BREAKS AND GAPS IN SILT FENCES AND BARRIERS IMMEDIATELY.
- INSTALL AND MAINTAIN FILTER SOCKS IN ACCORDANCE WITH WDNR TECHNICAL STANDARD #1071.
- ALL SIDE SLOPES 5:1 OR STEEPER SHALL BE RESTORED WITH CLASS I - TYPE 'A' EROSION MATTING, AND ALL AREAS OF CONCENTRATED FLOW SHALL BE RESTORED WITH CLASS II - TYPE 'B' CHANNEL MATTING. INSTALL AND MAINTAIN PER WDNR TECHNICAL STANDARDS #1052 AND #1053.
- ALL SLOPES PROTECTED ONLY BY SILT FENCE MUST BE FULLY RESTORED WITHIN 30 DAYS OF DISTURBANCE.
- STABILIZE ALL NON-ACTIVE STOCKPILES WITH TEMPORARY SEED & MULCH WITHIN 7 DAYS OF INACTIVITY AND/OR WITHIN 30 DAYS OF LAYUP. INSTALL SILT FENCING AROUND ALL DOWN SLOPE AND SIDE SLOPES OF TOPSOIL STOCKPILES. STOCKPILES NOT SHOWING ADEQUATE VEGETATION BY NOV 1 SHOULD BE DORMANT SEEDED AND COVERED WITH A WISDOT PAL TYPE A SOIL STABILIZER (FOR SLOPES 3 FEET HORIZONTAL TO 1 FOOT VERTICAL OR FLATTER) OR EROSION CONTROL MAT.
- ALL DISTURBED AREAS MUST BE STABILIZED WITHIN 7 DAYS OF INACTIVITY. THIS MAY BE DONE USING TEMPORARY AND/OR PREEMINENT RESTORATION TECHNIQUES, DEPENDING ON PROGRESS OF GRADING ACTIVITIES OF THE AREA(S). THIS INCLUDES AREAS OF SITE DEVELOPMENT AND UTILITY CONSTRUCTION.
- SEDIMENT CONTROL FOR UTILITY CONSTRUCTION.
 - PLACE EXCAVATED TRENCH MATERIAL ON HIGH SIDE OF THE TRENCH.
 - BACKFILL, COMPACT, AND STABILIZE THE TRENCH IMMEDIATELY AFTER UTILITY INSTALLATION.



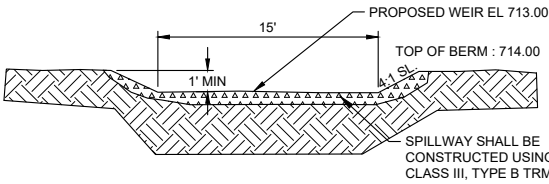
WET CELL LINER NOTES:
IT IS THE CONTRACTOR'S RESPONSIBILITY TO ENSURE THE WET CELL HOLDS WATER TO THE 2 YR WATER SURFACE ELEVATION, AND THAT THE LINER IS NOT DAMAGED WHILE REMOVING ANY ACCUMULATED SEDIMENT ONCE THE SITE HAS BEEN RESTORED.

CLAY LINER MATERIAL SHALL SATISFY REQUIREMENTS OF WDNR TECHNICAL STANDARD 1001 AND BE CERTIFIED WITH LABORATORY TESTING. A COPY OF THE TEST RESULTS SHALL BE PROVIDED TO THE CITY.



- STRUCTURE CONSTRUCTION NOTES:**
1. INSTALL RISER VERTICALLY ON TOP OF GRAVEL BASE
 2. POUR FOOTING AROUND BASE OF STRUCTURE (EXTEND 4" BEYOND PIPE EDGE)
 3. FILL RISER WITH CONCRETE TO SUMP ELEVATION

**WET BASIN
OUTLET STRUCTURE DETAIL
NTS**



**EMERGENCY SPILLWAY DETAIL
(N.T.S.)**

Save: 1/23/2024 3:04 PM Jstone Plot: 1/23/2024 3:08 PM x:\UZVIVVETCP1726175-final-dsgn\51-drawings\10-Civil\cad\dwg\sheet172617BSN.dwg

SEH Project	VETCP172617	Rev.#	Revision Issue Description	Date	Rev.#	Revision Issue Description	Date
Drawn By	JLS						
Designed By	MPC						
Checked By	MPC						

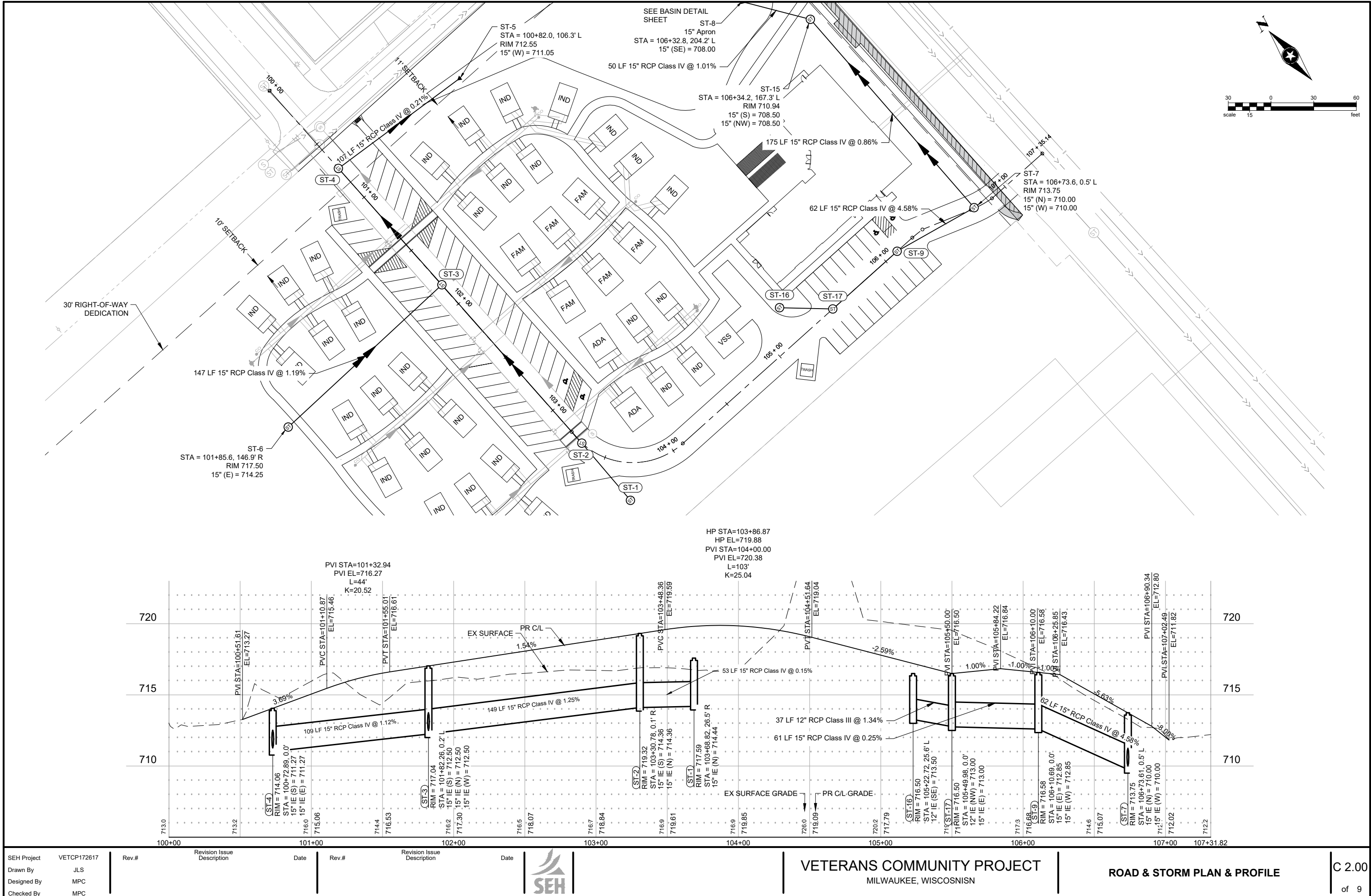


VETERANS COMMUNITY PROJECT
MILWAUKEE, WISCONSIN

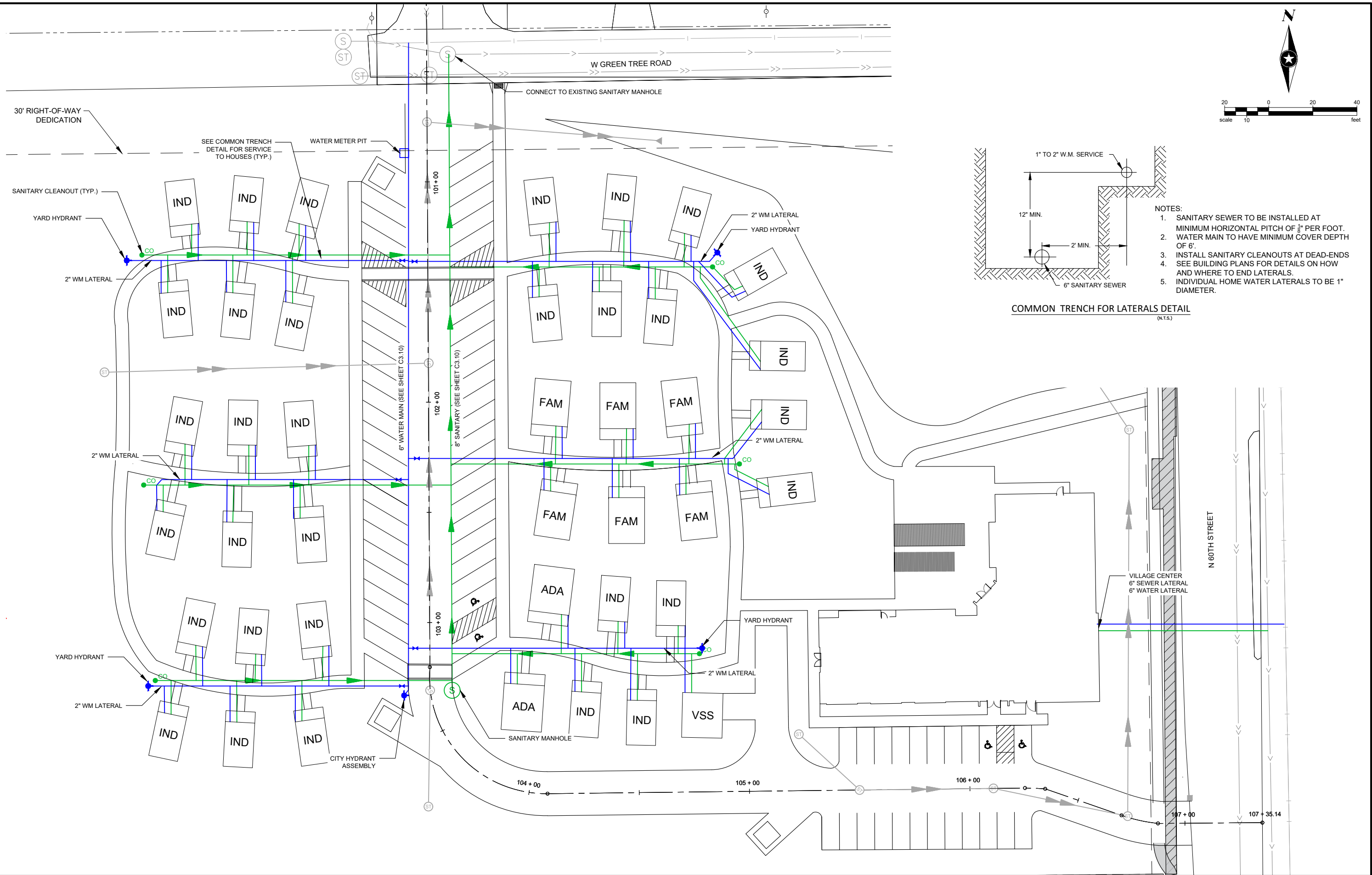
BASIN DETAILS

C
1.10
of 9

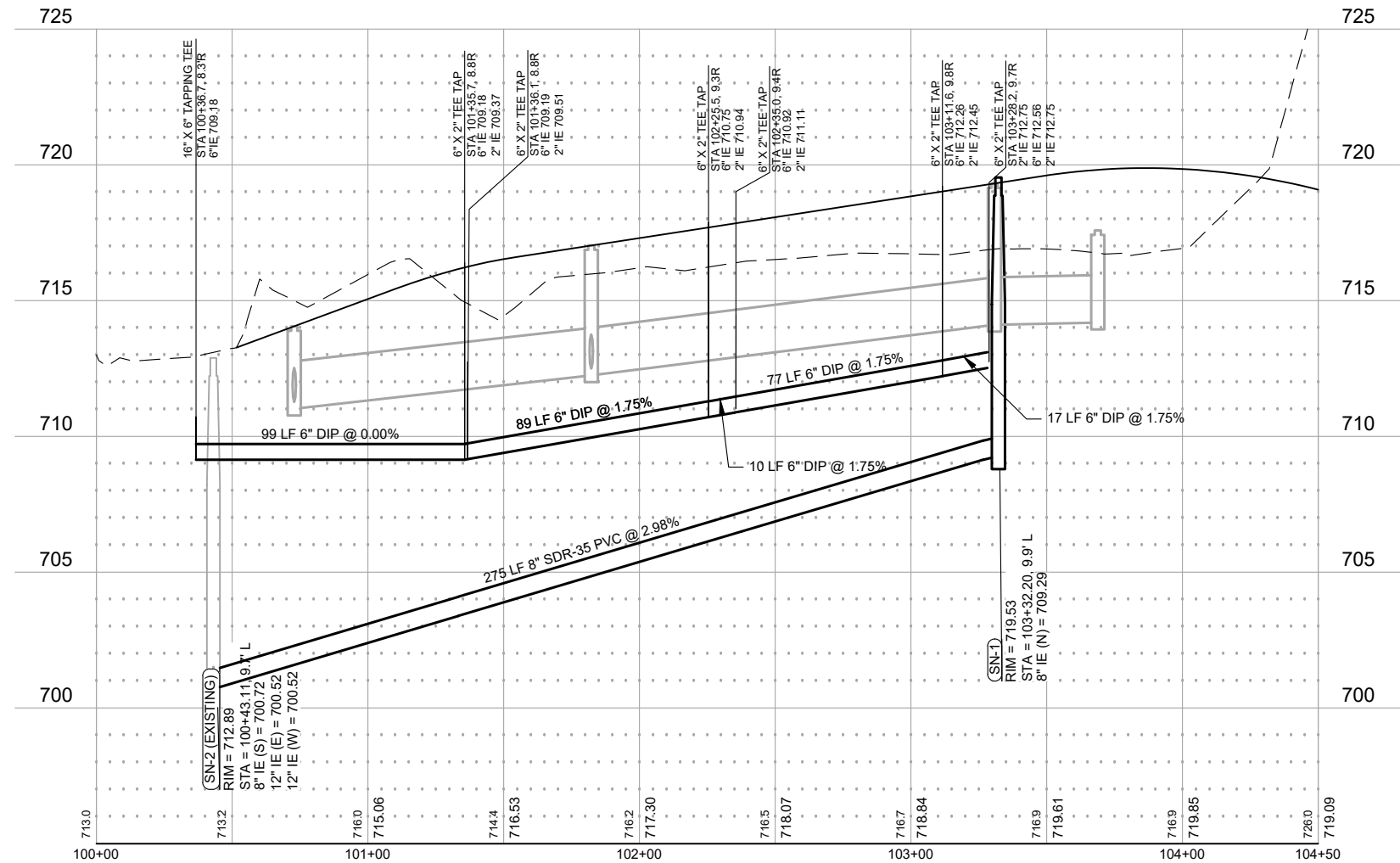
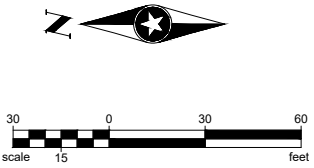
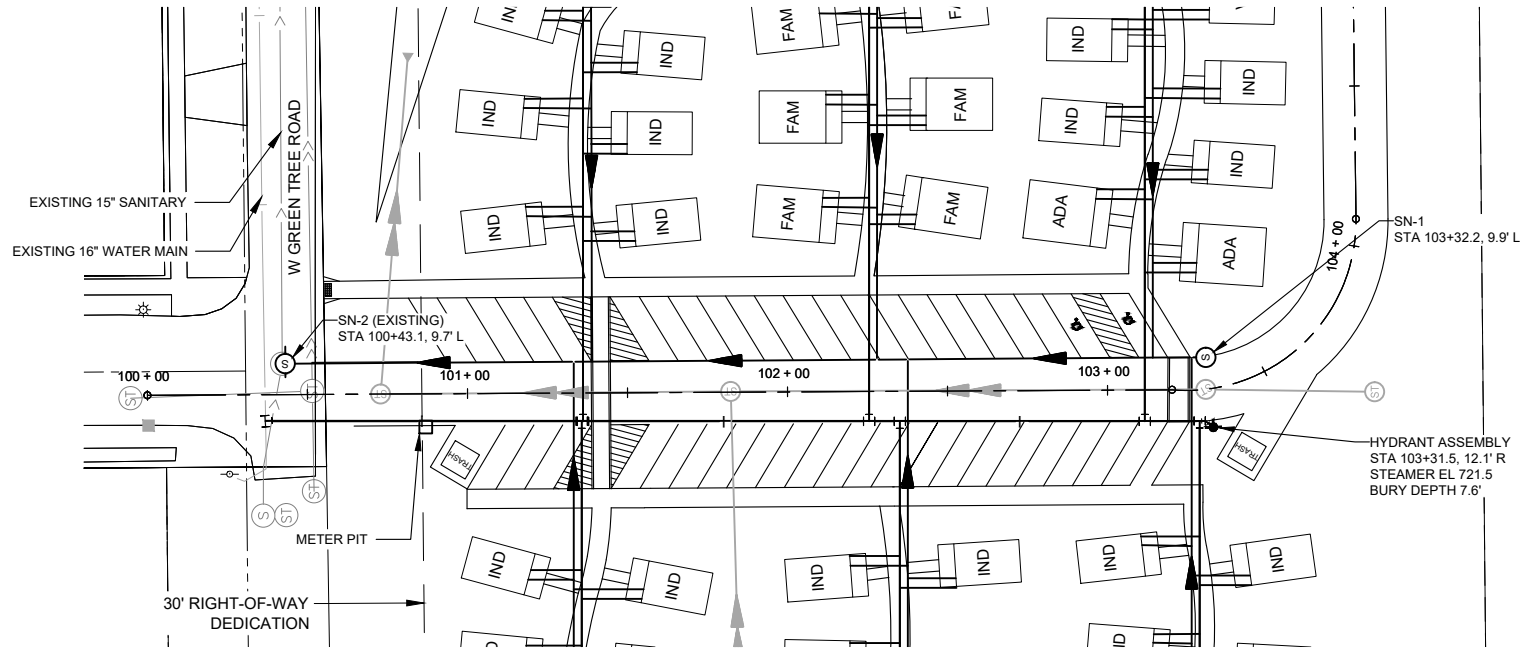
Save: 1/23/2024 2:58 PM\jstone Plot: 1/23/2024 3:09 PM x:\UZV\VETCP172617\5-final-dsgn\51-drawings\10-Civil\cad\dwg\sheet172617ST&RD.dwg



Save: 1/23/2024 2:58 PM\jstone Plot: 1/23/2024 3:09 PM x:\UZ\VV\ETCP172617\5-final-dsgn\51-drawings\10-Civil\cad\dwg\sheet172617\WM&SAN.dwg



Save: 1/23/2024 2:58 PM \\stone\Plot: 1/23/2024 3:10 PM x:\UZV\VETCP172617\5-final-dsgn\51-drawings\10-Civil\cad\dwg\sheet172617\WM&SAN.dwg



SEH Project VETCP172617
Drawn By JLS
Designed By MPC
Checked By MPC

Rev.# Revision Issue Description Date

Rev.# Revision Issue Description Date



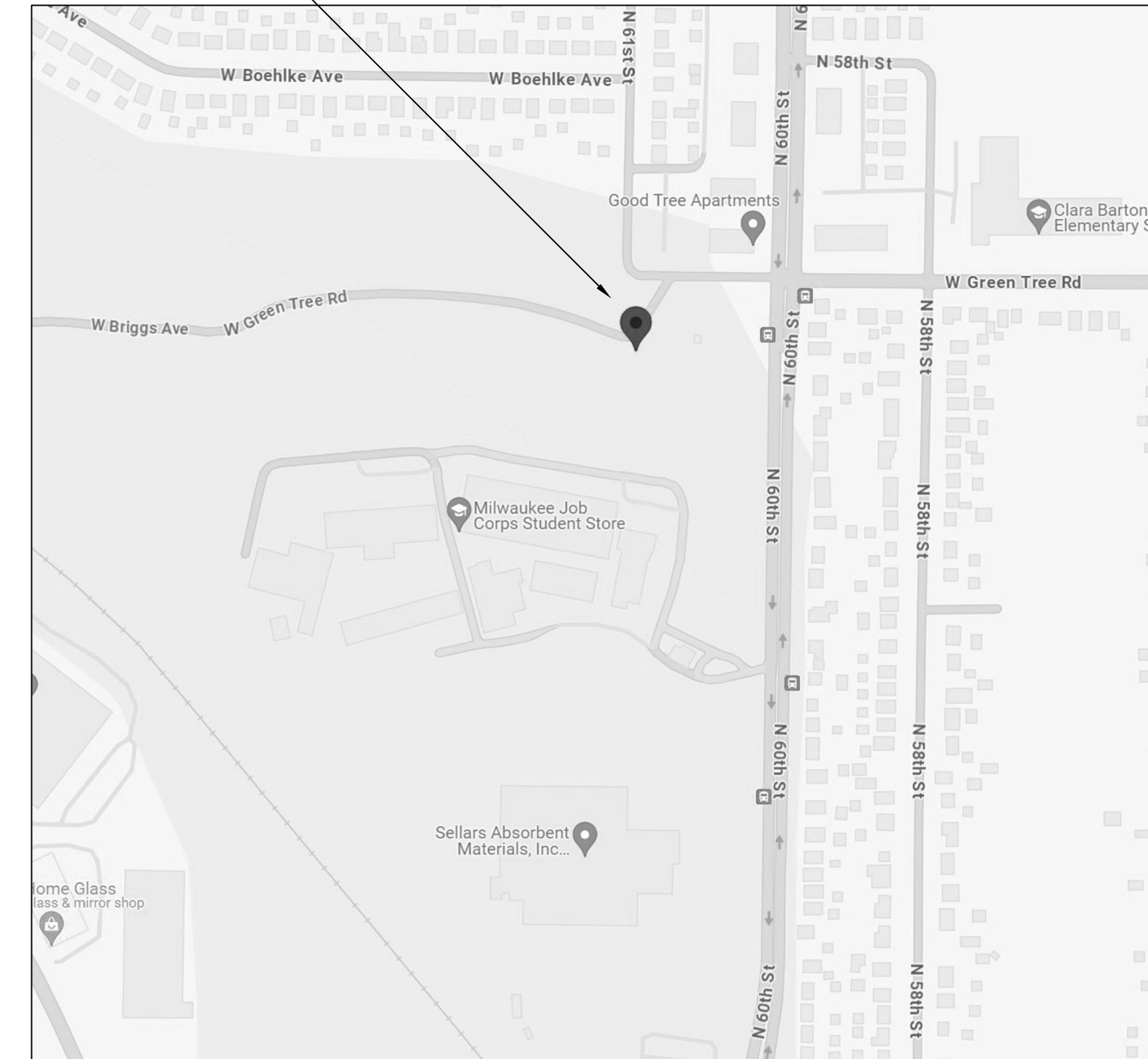
VETERANS COMMUNITY PROJECT
MILWAUKEE, WISCONSIN

WATERMAIN & SANITARY PLAN & PROFILE

C
3.10
of 9

VETERANS COMMUNITY PROJECT MILWAUKEE, WISCONSIN

**THOMAS NORDLOH ASSOCIATES
4111 TAFT ROAD, KENOSHA WISCONSIN
PH. 262.496.9191 EMAIL TOM@NI-LLC.COM
DATE; 1-8-24**



PAGE L-1.0	OVERALL LANDSCAPE PLAN
PAGE L-2.0	FUTURE WEST AREA DEVELOPMENT
PAGE L-3.0	COMMUNITY CENTER LANDSCAPING
PAGE L-4.0	TYPICAL VETERAN HOME LANDSCAPING
PAGE L-5.0	SCHEDULES AND DETAIL PLAN

No.	Revision/Issue	Date
1		
2		
3		
4		

**VETERANS COMMUNITY PROJECT
MILWAUKEE, WISCONSIN**

Thomas H. Nordloh
Landscape Architect
Reg. # 051-000629

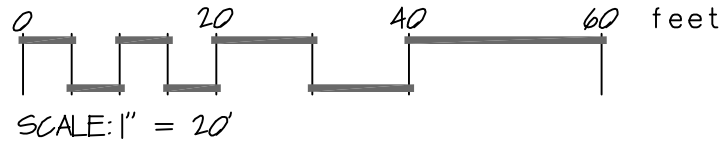
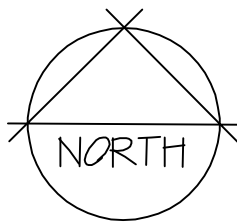
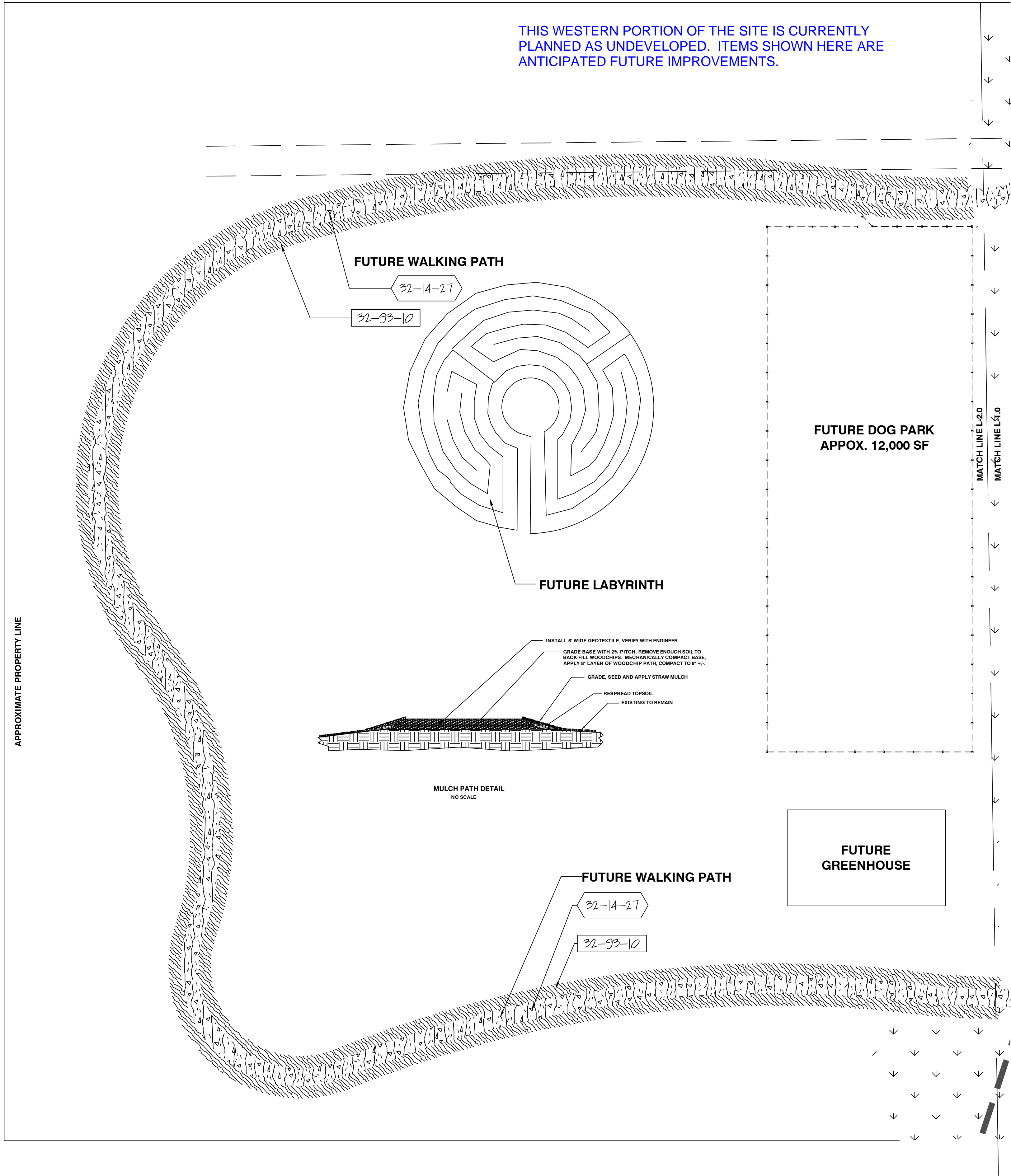
Project **20231023**

Date **1-8-24**

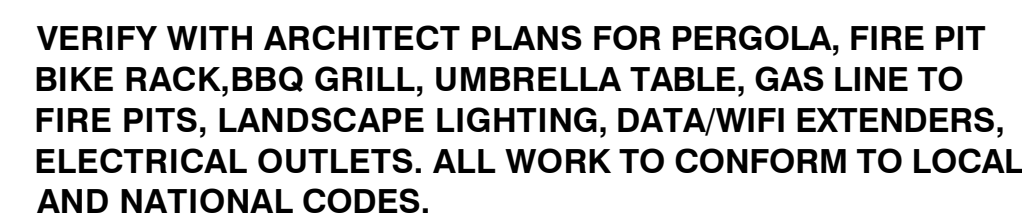
Scale

Sheet

L-2.0



FUTURE WEST AREA DEVELOPMENT



TNA
Landscape Architecture
&
Project Management

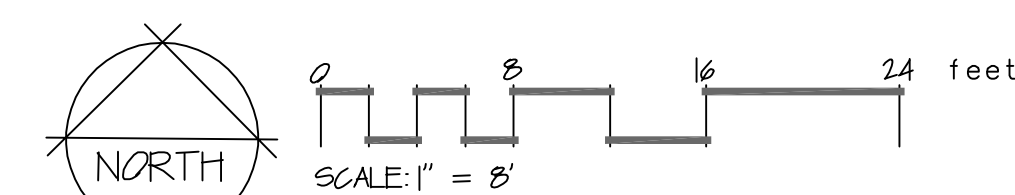
No.	Revision/Issue	Date
1		
2		
3		
4		

**VETERANS COMMUNITY PROJECT
MILWAUKEE, WISCONSIN**

Scale

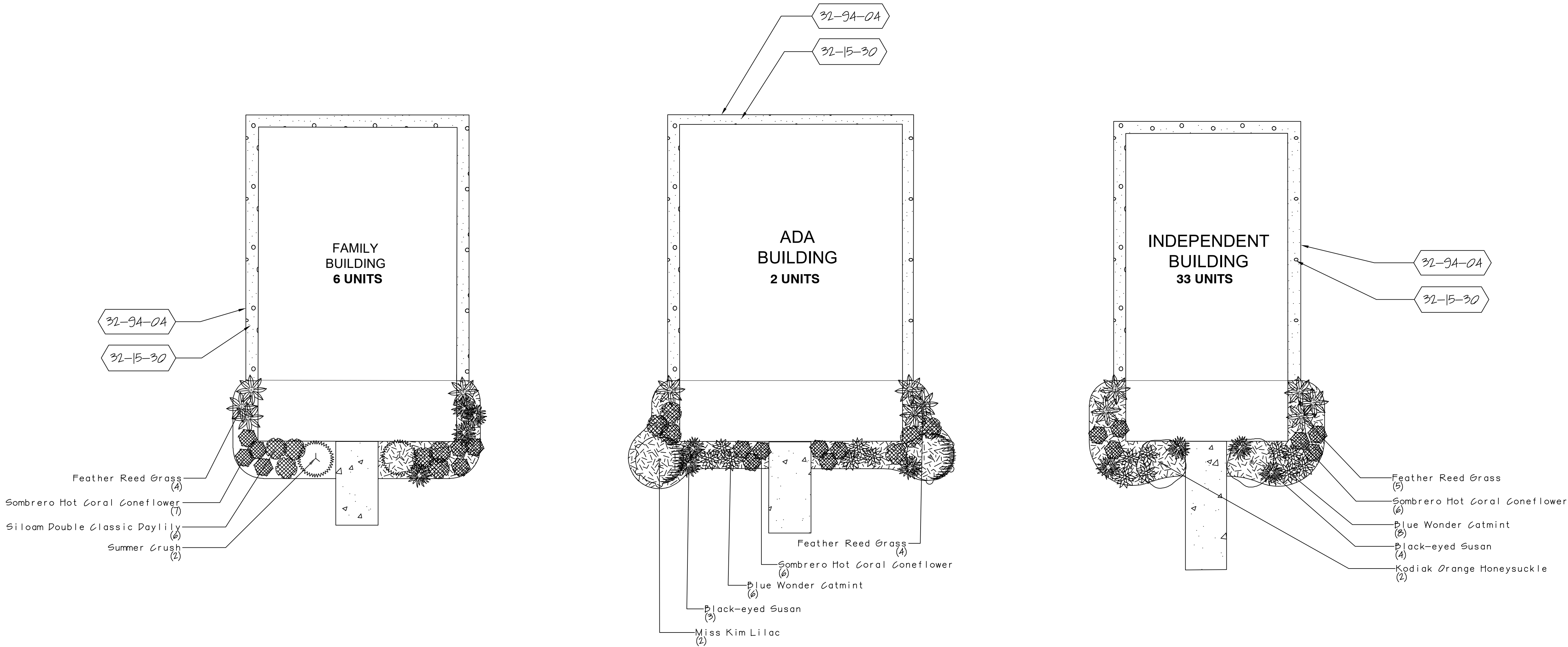
Sheet

L-3.0



COMMUNITY CENTER LANDSCAPING

No.	Revision/Issue	Date
1		
2		
3		
4		



REFERENCE NOTES SCHEDULE FAMILY BUILDING

SYMBOL	Aggregate Surface DESCRIPTION	QTY
32-15-30	WASHED STONE, 4" DEPTH OVER FILTER/WEED FABRIC	60 sf
SYMBOL	Planting Accessories DESCRIPTION	QTY
32-94-04	EDGE, ALUMINUM EDGING, 16' LENGTH NON PAINTED	64 lf
32-94-119	SHREDDED BARK MULCH, 3-4" DEPTH	33 sf
32-95-01	EDGE, SHOVEL CUT BED EDGE, 4" DEPTH-SEE DETAIL	32 lf

REFERENCE NOTES SCHEDULE ADA BUILDING

SYMBOL	Aggregate Surface DESCRIPTION	QTY
32-15-30	WASHED STONE, 4" DEPTH OVER FILTER/WEED FABRIC	54 sf
SYMBOL	Planting Accessories DESCRIPTION	QTY
32-94-04	EDGE, ALUMINUM EDGING, 16' LENGTH NON PAINTED	66 lf
32-94-119	SHREDDED BARK MULCH, 3-4" DEPTH	85 sf
32-95-01	EDGE, SHOVEL CUT BED EDGE, 4" DEPTH-SEE DETAIL	42 lf

REFERENCE NOTES SCHEDULE IND. BUILDING

SYMBOL	Aggregate Surface DESCRIPTION	QTY
32-15-30	WASHED STONE, 4" DEPTH OVER FILTER/WEED FABRIC	57 sf
SYMBOL	Planting Accessories DESCRIPTION	QTY
32-94-04	EDGE, ALUMINUM EDGING, 16' LENGTH NON PAINTED	60 lf
32-94-119	SHREDDED BARK MULCH, 3-4" DEPTH	77 sf
32-95-01	EDGE, SHOVEL CUT BED EDGE, 4" DEPTH-SEE DETAIL	33 lf

PLANT SCHEDULE FAMILY BUILDING

SHRUBS	SIZE	QTY
Hydrangea macrophylla 'Nortmatarfa' / Summer Crush	3 gal	2
GRASSES	SIZE	QTY
Calamagrostis x acutiflora 'Karl Foerster' / Feather Reed Grass	1 gal	4
ANNUALS/PERENNIALS	SIZE	QTY
Echinacea purpurea 'Sombbrero Hot Coral' / Sombbrero Hot Coral Coneflower	1 gal	7
Hemerocallis x 'Siloam Double Classic' TM / Siloam Double Classic Daylily	1 gal	6
Rudbeckia fulgida sullivantii 'Goldsturm' / Black-eyed Susan	1 gal	4

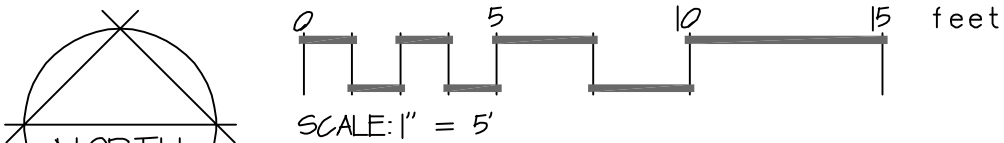
PLANT SCHEDULE ADA BUILDING

SHRUBS	SIZE	QTY
Syringa patula 'Miss Kim' / Miss Kim Lilac	24"	2
GRASSES	SIZE	QTY
Calamagrostis x acutiflora 'Karl Foerster' / Feather Reed Grass	1 gal	4
ANNUALS/PERENNIALS	SIZE	QTY
Echinacea purpurea 'Sombbrero Hot Coral' / Sombbrero Hot Coral Coneflower	1 gal	6
Hemerocallis x 'Siloam Double Classic' TM / Siloam Double Classic Daylily	1 gal	6
Nepeta x faassenii 'Blue Wonder' / Blue Wonder Catmint	1 gal	6
Rudbeckia fulgida sullivantii 'Goldsturm' / Black-eyed Susan	1 gal	3

PLANT SCHEDULE IND. BUILDING

SHRUBS	SIZE	QTY
Diervilla x '61X88544' TM / Kodiak Orange Honeysuckle	3 gal	2
GRASSES	SIZE	QTY
Calamagrostis x acutiflora 'Karl Foerster' / Feather Reed Grass	1 gal	5
ANNUALS/PERENNIALS	SIZE	QTY
Echinacea purpurea 'Sombbrero Hot Coral' / Sombbrero Hot Coral Coneflower	1 gal	6
Nepeta x faassenii 'Blue Wonder' / Blue Wonder Catmint	1 gal	8
Rudbeckia fulgida sullivantii 'Goldsturm' / Black-eyed Susan	1 gal	4

NOTE; BUILDING LANDSCAPING IS FOR FUTURE INSTALLATION.
SCHEDULE QUANTITIES ARE FOR (1) UNIT



COMMON NAME	BOTANICAL NAME	SIZE	CONTAINER	QTY
TREES				
Autumn Blaze Maple	Acer freemanii 'Autumn Blaze'	25" Cal.	B&B	4
Celebration Freeman Maple	Acer x freemanii 'Celzam'	25" Cal.	B&B	2
Autumn Brilliance Serviceberry	Amelanchier canadensis 'Autumn Brilliance'	6"	B&B	13
Common Hackberry	Celtis occidentalis	25" Cal.	B&B	5
Honey Locust	Gleditsia triacanthos	25" Cal.	B&B	2
Kentucky Coffeetree	Gymnocladus dioica 'Espresso'	25" Cal.	B&B	4
Raspberry Spear Crabapple	Malus x 'JFS KW213MX'	6"	B&B	9
Exclamation London Plane Tree	Platanus x acerifolia 'Exclamation' TM	25" Cal.	B&B	4
Ivory Silk Japanese Tree Lilac	Syringa reticulata 'Ivory Silk'	6"	B&B	9

Norway Spruce	<i>Picea abies</i>	6'	B&B	1
Black Hills Spruce	<i>Picea glauca</i> 'Densata'	6'	B&B	3
White Pine	<i>Pinus strobus</i>	6'	B&B	3
Techny Arborvitae	<i>Thuja occidentalis</i> 'Techny'	5'	B&B	26

Southern Bush-honeysuckle	<i>Diervilla sessilifolia</i> 'Butterfly'	5 gal	4
---------------------------	---	-------	---

Autumn Joy Sedum	Sedum x 'Autumn Joy'	gal	2
------------------	----------------------	-----	---

Kallay Compact Pfitzer Juniper	Juniperus chinensis 'Kallays Compact'	5 gal	7
--------------------------------	---------------------------------------	-------	---

<u>COMMON NAME</u>	<u>BOTANICAL NAME</u>	<u>SIZE</u>	<u>CONTAINER</u>	<u>QTY</u>
TREES				
Autumn Blaze Maple	<i>Acer freemanii</i> 'Autumn Blaze'	25" Cal.	B&B	4
Common Hackberry	<i>Celtis occidentalis</i>	25" Cal.	B&B	5
Kentucky Coffeetree	<i>Gymnocladus dioica</i> 'Espresso'	25" Cal.	B&B	4
Exclamation London Plane Tree	<i>Platanus x acerifolia</i> 'Exclamation' TM	25" Cal.	B&B	4

<u>COMMON NAME</u>	<u>BOTANICAL NAME</u>	<u>SIZE</u>	<u>CONTAINER</u>	<u>QTY</u>
TREES				
Celebration® Freeman Maple	Acer x freemanii 'Gelzam'	25" Cal.	B&B	2
Autumn Brilliance Serviceberry	Amelanchier canadensis 'Autumn Brilliance'	25" Cal.	B&B	13
Honey Locust	Gleditsia triacanthos	6" Cal.	B&B	2
Raspberry Spear® Crabapple	Malus x 'JFS KW21PMX'	6"	B&B	9
Ivory Silk Japanese Tree Lilac	Syringa reticulata 'Ivory Silk'	6"	B&B	9

Norway Spruce	<i>Picea abies</i>	6'	B&D	1
Black Hills Spruce	<i>Picea glauca</i> 'Densata'	6'	B&D	3
White Pine	<i>Pinus strobus</i>	6'	B&D	3
Techny Arborvitae	<i>Thuja occidentalis</i> 'Techny'	5'	B&D	26

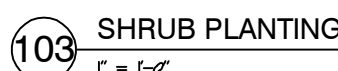
Southern Bush-honeysuckle	<i>Diervilla sessilifolia</i> 'Butterfly'	5 gal	4
---------------------------	---	-------	---

Autumn Joy Sedum	Sedum x 'Autumn Joy'	1 gal	21
------------------	----------------------	-------	----

Kallay Compact Pfitzer Juniper	Juniperus chinensis 'Kallays Compact'	5 gal	7
--------------------------------	---------------------------------------	-------	---

<u>SYMBOL</u>	<u>Unit Paving</u> <u>DESCRIPTION</u>	<u>QTY</u>
32-14-27	WOODCHIP WALKING/BIKING PATH @ 6' WIDTH, INSTALL OVER HEAVY DUTY GEOTEXTILE FABRIC	7,555 sf
<u>SYMBOL</u>	<u>Aggregate Surface</u> <u>DESCRIPTION</u>	<u>QTY</u>
32-15-30	WASHED STONE 15-2" @ 4" DEPTH OVER FILTER/WEED FABRIC	105 sf
<u>SYMBOL</u>	<u>Planting</u> <u>DESCRIPTION</u>	<u>QTY</u>
32-93-10	SEED AND STRAW MULCH. USE REINDARS PREMIUM 60 SEED MIX, INSTALL AT RECOMMENDED RATES. FERTILIZE AT 1/2 RATE WITH 10-10-10 AFTER SEED HAS GERMINATED	6,471 sf
32-93-10	REINDARS PREMIUM 60 TURF-SEED AND DN SHORT TERM EROSION BLANKET. INSTALL PER MANUFACTURERS GUIDELINES. STAPLES MUST BE FULLY INSTALLED IN THE GROUND. LONG TERM AND GREEN NETTED BLANKET AND BENT OVER STAPLES WILL NOT BE ACCEPTED	116,747 sf
32-93-140	DRY BOTTOM DETENTION POND SEED MIX, PIZZO NATIVE PLANT NURSERY, WWW.PIZZONURSERY.COM	5,552 sf
32-93-16	TURF REINFORCEMENT MAT, NORTH AMERICAN GREEN C-350 or EQUAL	593 sf
32-93-27	NO-MOW FESCUE AND DN EROSION BLANKET	10,607 sf
<u>SYMBOL</u>	<u>Planting Accessories</u> <u>DESCRIPTION</u>	<u>QTY</u>
32-94-04	EDGE, ALUMINUM EDGING, 16' LENGTH NON PAINTED	76 lf
32-94-119	SHREDDED BARK MULCH, 3-4" DEPTH	596 sf
32-94-136	3' DIAMETER MULCH TREE RING	56
32-95-01	EDGE, SHOVEL CUT BED EDGE, 4" DEPTH-SEE DETAIL	256 lf
<u>SYMBOL</u>	<u>Storm Drainage Utilities</u> <u>DESCRIPTION</u>	<u>QTY</u>
33-41-15	8" PVC DRAIN TILE	23 lf

<u>SYMBOL</u>	<u>Site Furnishings</u> <u>DESCRIPTION</u>	<u>QTY</u>
12-93-06	45" DIAMETER STONE FIRE PIT, 30" PUSH BUTTON GAS BURNER, 55" DIAMETER STONE CAP WITH 6" OVERHANG	2
<u>SYMBOL</u>	<u>Unit Paving</u> <u>DESCRIPTION</u>	<u>QTY</u>
32-14-10	BLESTONE PAVING ON 1" BEDDING AND 5" CRUSHED LIMESTONE BASE. COMPACT BASE TO 95% PROCTOR DENSITY. COMPACT TRENCHES BEFORE INSTALLING BASE	36 sf
<u>SYMBOL</u>	<u>Site Furnishings</u> <u>DESCRIPTION</u>	<u>QTY</u>
32-33-44	CEDAR PERGOLA, VERIFY SIZE AND HEIGHT	1
<u>SYMBOL</u>	<u>Planting Accessories</u> <u>DESCRIPTION</u>	<u>QTY</u>
32-34-113	SHREDDED BARK MULCH, 3-4" DEPTH	1,476 sf
32-35-01	EDGE, SHOVEL CUT BED EDGE, 4" DEPTH-SEE DETAIL	231 lf
<u>SYMBOL</u>	<u>Site Furnishings</u> <u>DESCRIPTION</u>	<u>QTY</u>
S-107-03	MADRAPX BIKE RACK-PHX-SNG-4 1-7/8" tube 24" W x 36" L x 36" H 4-bikes	1
S-109	TYPICAL FLAGPOLE, VERIFY TYPE, SIZE LOCATION WITH ARCHITECT	1
S-110	TYPICAL BBQ GRILL, VERIFY SIZE, FUEL TYPE, FINAL LOCATION WITH ARCHITECT	2
S-111	TYPICAL TRASH RECEPTICAL, VERIFY FINAL TYPE, LOCATION AND QUANTITY BY ARCHITECT	2
S-112	TYPICAL 6 PERSON DINING TABLE AND UMBRELLA, VERIFY WITH ARCHITECT FINAL TYPE AND QUANTITY	2



1. Topsoil return to depth of 4" minimum is by excavating contractor. Berms (if applicable) are by others. Returned topsoil to have no rock larger than 1", construction debris and/or roots in the soil. Contact general contractor if soil is not acceptable for proper plant growth.
2. Always contact Diggers Hotline (800-242-8511) or JULIE 811 (or 1-800-892-0123) before proceeding with any work.
3. Landscape contractor is required to visit the site and review all civil plans related to the project. The civil plans take precedence over the landscape plans.
4. Plant material to be of the highest quality available and should not include # 2 grade trees, evergreens or shrubs. Landscape contractor is to verify plant quantities. Labeled plants have precedence over the plant table. Verify quantity with a hand takeoff of the plan. Any substitutions of plant type, quantity or size must be approved by city forester..
5. Planting beds shall receive a 3" layer of high quality non-dyed shredded hardwood mulch. 3" diameter tree rings shall be installed around all trees and evergreens in the turf areas. Perennial and annual beds shall receive between a 1-2" layer of shredded bark mulch.
6. Spade cut plant beds and tree rings with a 4" deep shovel cut.
7. Perennial and annual beds to have a 2" layer of compost mulch incorporated 6" deep into the planting bed before installation of plants.
8. Seeded lawn areas to have high quality Bluegrass seed blend for sunny areas, shade areas to have a Bluegrass and Fescue blend of seed. See civil plans for turf restoration. Apply a 10-10-10 starter fertilizer after turf has germinated. Follow manufactures direction on fertilizer application rates.
9. Sodded turf (if applicable) to be installed in staggered fashion with tight joints. Sod to be rolled and watered to a depth of 3-4" immediately upon laying of the turf. Stake sod on slopes of less than 3:1 grade. Peat sod is not acceptable.
10. Erosion blanket shall be installed on seeded slopes with a grade of 3:1 or less. 90 day single net, double net or Turf Reinforcement Mats shall be installed per the required use. Follow manufactures stapling guidelines to ensure proper stabilization. Install erosion blanket for dormant seed applications (after November 1st) or mid-summer installations or where ever applicable to promote healthy turf establishment.
11. Landscape contractor is responsible to maintain the site for a period of 45 days after substantial completion of project. This will include watering, mowing of turf areas as needed, weeding plant beds, maintaining a clean site and other activities to ensure proper growth of the landscape.
12. If an irrigation system is not installed a temporary irrigation system shall be set up for a period of 30 days to water lawn areas. Install drip irrigation for plant beds. Install timers that will enable the new turf areas to receive enough water to properly germinate seed. Owner to provide access to water from outside of building to facilitate proper watering. Seed areas may require additional time for proper establishment
13. Warranty of plants, trees, evergreens, shrubs shall be for a period of 18 months from date of substantial completion. Perennials, ornamental grasses, annuals shall be guaranteed for one (1) growing season. One replacement will be required of each dead plant at the end of the warranty period.

RENDERINGS FOR CONCEPTUAL REFERENCE ONLY; IMAGE MAY NOT REFLECT LATEST DESIGN, REFERENCE ELEVATIONS AND SCHEDULES FOR FINISHES.



DRAWING INDEX

GENERAL	
0A0.0	COVER SHEET
CIVIL	
T0.10	CIVIL COVERSHEET
C0.20	WATER AND SANITARY DETAILS
C0.30	STORM & EROSION CONTROL DETAILS
C0.40	ROAD DETAILS
C1.00	GRADING & EROSION CONTROL PLAN
C1.10	BASIN DETAILS
C2.00	ROAD & STORM PLAN & PROFILE
C3.00	WATERMAIN & SANITARY SYSTEM MAP
C3.10	WATERMAIN & SANITARY PLAN & PROFILE
LANDSCAPE	
L1.0	OVERALL LANDSCAPE PLAN
L2.0	FUTURE WEST AREA DEVELOPMENT
ARCHITECTURAL	
2A0.1	PHASING PLAN
2A0.2	ARCHITECTURAL SITE PLAN & DETAILS
2A0.3	TRASH ENCLOSURE PLAN AND DETAILS
4A1.1	FIRST FLOOR PLAN
4A3.1	ROOF PLAN
4A4.1	EXTERIOR ELEVATIONS
4A4.2	EXTERIOR ELEVATIONS

PROJECT TEAM

ARCHITECT	CONTRACTOR
FINKLE + WILLIAMS ARCHITECTURE 6767 Reinner Blvd., Suite 100 Lenexa, Kansas 66219 PH: 913.498.1550	TBD
CIVIL	MECHANICAL
FIRM NAME 316 North Milwaukee St. Landmark Building, Suite 302 Milwaukee, WI 53202-5888 PH: 414.465.1200	PKMR 13300 W. 98th St. Lenexa, KS 66215 PH: 913.492.2400
LANDSCAPE	PLUMBING
TOM NORDLOH ASSOCIATES 4111 Taft Rd. Kenosha, WI 53142 PH: 262.496.9191	PKMR 13300 W. 98th St. Lenexa, KS 66215 PH: 913.492.2400
STRUCTURAL	ELECTRICAL
STAND STRUCTURAL ENG. 6234 Robinson Street Overland Park, KS 66204 PH: 913.214.2169	PKMR 13300 W. 98th St. Lenexa, KS 66215 PH: 913.492.2400



FINKLE + WILLIAMS
ARCHITECTURE

PROJECT ADDRESS
6767 N. 60th Street
Milwaukee, WI 53223

VCP - MILWAUKEE

PROJECT NUMBER
22043

RELEASE DATE
Jan. 8th, 2024

ISSUED FOR
Planning Review

CURRENT REVISION



6767 N. 60th Street
Milwaukee, WI 53223

Project No.: 22043

Date: Jan. 8th, 2024

Issued For: Planning Review

REVISIONS

[illegible]

REGISTRATION

NOT FOR CONSTRUCTION



1000

PROJECT TEAM

ARCHITECT FINKLE+WILLIAM
ARCHITECTURE

CIVIL	CIVIL CONSULTANT
-------	---------------------

LANDSCAPE LANDSCAPE

STRUCTURAL STRUCTURAL

PLUMBING PLUMBING

MECHANICAL MECHANICAL

ELECTRICAL ELECTRICAL

FIRE PROTECTION FIRE PROTECTION

CONTRACTOR GC

FINKLE + WILLIAM
ARCHITECTS

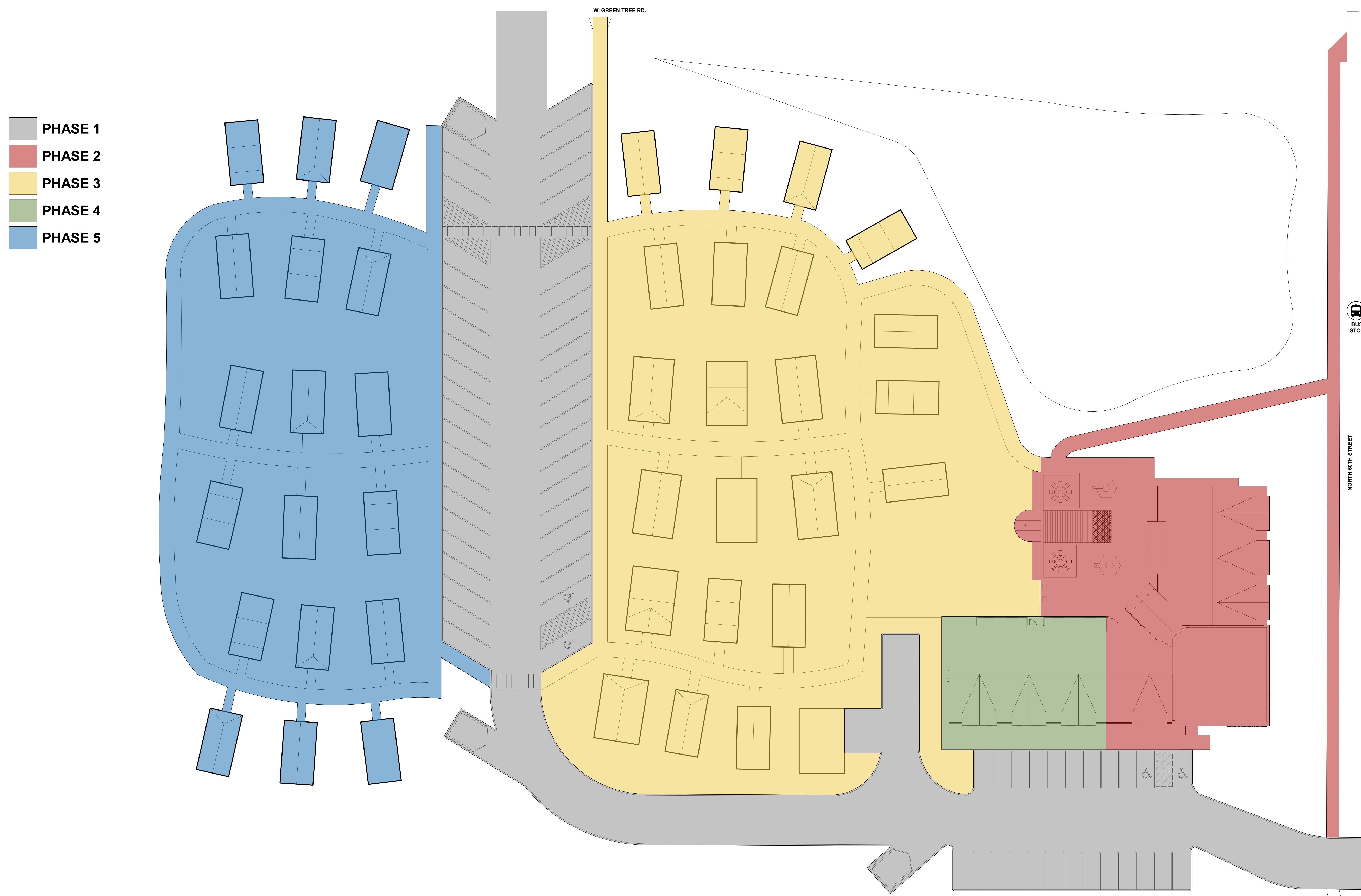
8787 RENNER BLVD., SUITE 10
LENEXA, KANSAS 66219
913.498.1550
www.finklewilliams.com

SHEET TITLE

PHASING PLAN

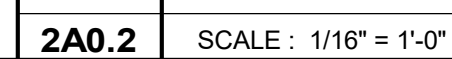
SHEET NUMBER

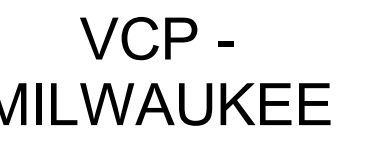
2A0.1





2A0.2





767 N. 60th Street
Milwaukee, WI 53223

Project No.: 22043

Date: Jan. 8th, 2024

Issued For: Planning Review

[illegible]

REGISTRATION

NOT FOR CONSTRUCTION

PROJECT TEAM	
ARCHITECT	FINKLE+WILLIAMS ARCHITECTURE
CIVIL	CIVIL CONSULTANT
LANDSCAPE	LANDSCAPE
STRUCTURAL	STRUCTURAL
PLUMBING	PLUMBING
MECHANICAL	MECHANICAL
ELECTRICAL	ELECTRICAL
FIRE PROTECTION	FIRE PROTECTION
CONTRACTOR	GC



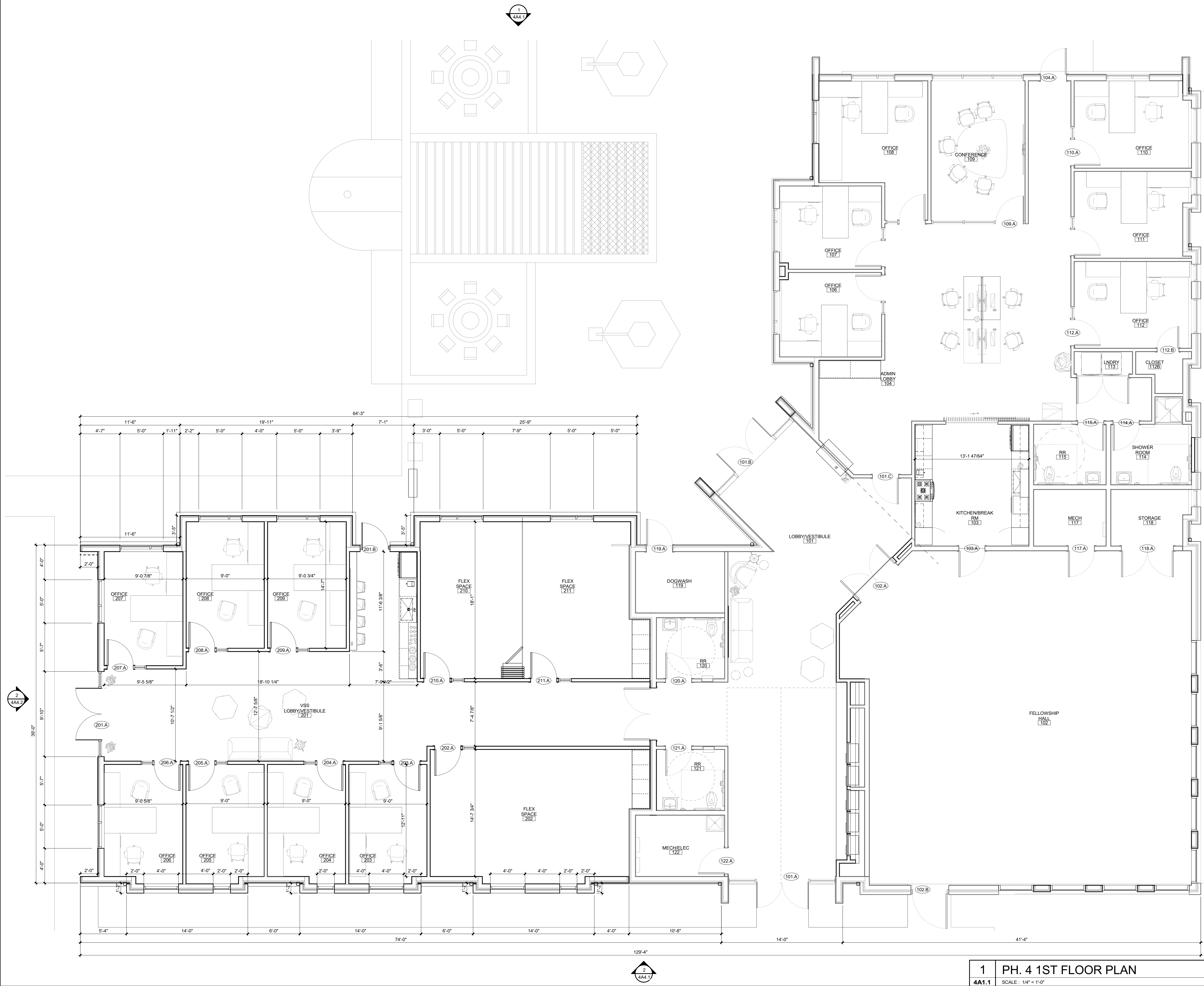
8787 RENNER BLVD., SUITE 100
LENEXA, KANSAS 66219
913.498.1550
www.finklewilliams.com

MEET TITLE

FIRST FLOOR
PLAN

ET NUMBER

4A1.1





6767 N. 60th Street
Milwaukee, WI 53223

Project No.: 22043

Date: Jan. 8th, 2024

Issued For: Planning Review

REVISIONS

[illegible]

REGISTRATION

NOT FOR CONSTRUCTION

PROJECT TEAM

ARCHITECT FINKLE+WILLIAM
ARCHITECTURE

CIVIL CONSULTANT

LANDSCAPE LANDSCAPE

STRUCTURAL STRUCTURAL

PLUMBING PLUMBING

MECHANICAL MECHANICAL

ELECTRICAL ELECTRICAL

FIRE PROTECTION FIRE PROTECTION

CONTRACTOR GC



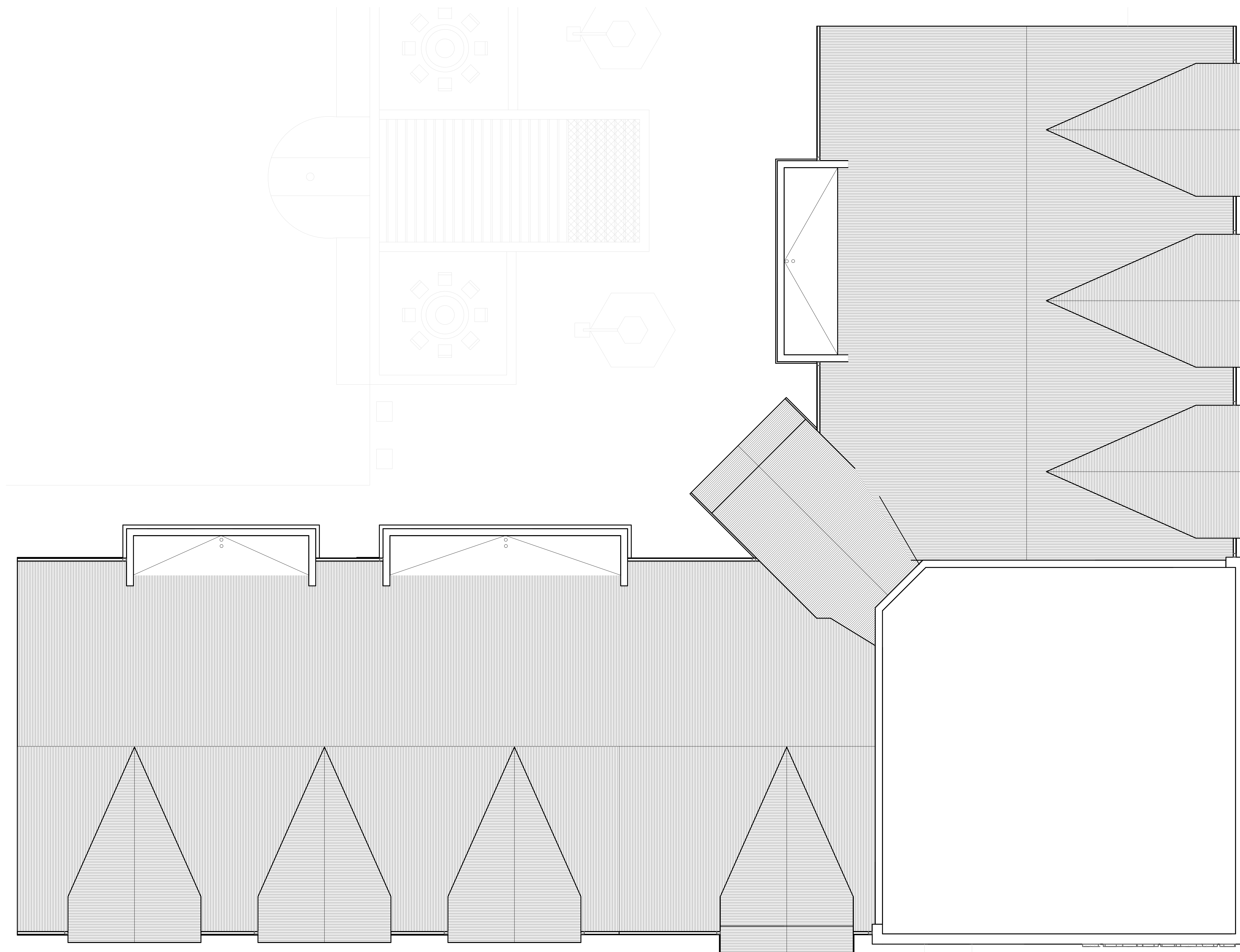
8787 RENNER BLVD., SUITE 100
LENEXA, KANSAS 66219
913.498.1550
www.finklewilliams.com

SHEET TITLE

ROOF PLAN

SHEET NUMBER

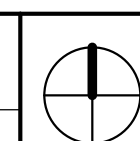
4A3.1



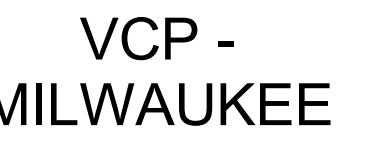
/5/2024 5:12:00 PM | VCP - MILWAUKEE

1

PH. 4 ROOF PLAN



<u>BR-1:</u>	ENDFACE FLAT PRODUCT CO FADE BRICK: ASTM C216 GRADE: SW TYPE: FFX COLOR: Light Gray
<u>CMU-1:</u>	ARCHITECTURAL 2: STONE VENEER COLOR: Black to match MTL-1
<u>MTL-1:</u>	CORRUGATED METAL PANEL VERTICAL SEAM COLOR: Matte Black
<u>MTL-2:</u>	METAL FLASHING COLOR: Matte Black
<u>WD-1:</u>	EXTERIOR WOOD VENEER PANELS
<u>CB-1:</u>	EXTERIOR CEMENT BOARD SIDING COLOR: Light Gray to match BR-1
<u>GL-1:</u>	ALUMINUM STOREFRONT GLAZING SYSTEM 1" Insulated LOW-E Glazing Unit COLOR: Black Anodized Frames
<u>PT-1:</u>	LIGHT GRAY PAINT TO MATCH BR-1
<u>S/D:</u>	KYNAR-COATED SHEET METAL GUTTER COLOR: Matte Black



767 N. 60th Street
Milwaukee, WI 53223

Project No.: 22043

Date: Jan. 8th, 2024

Issued For: Planning Review

VISIONS

[illegible]

REGISTRATION

NOT FOR CONSTRUCTION

PROJECT TEAM

ARCHITECT	FINKLE+WILLIAMS ARCHITECTURE
CIVIL	CIVIL CONSULTANT
LANDSCAPE	LANDSCAPE
STRUCTURAL	STRUCTURAL
PLUMBING	PLUMBING
MECHANICAL	MECHANICAL
ELECTRICAL	ELECTRICAL
FIRE PROTECTION	FIRE PROTECTION
CONTRACTOR	GC



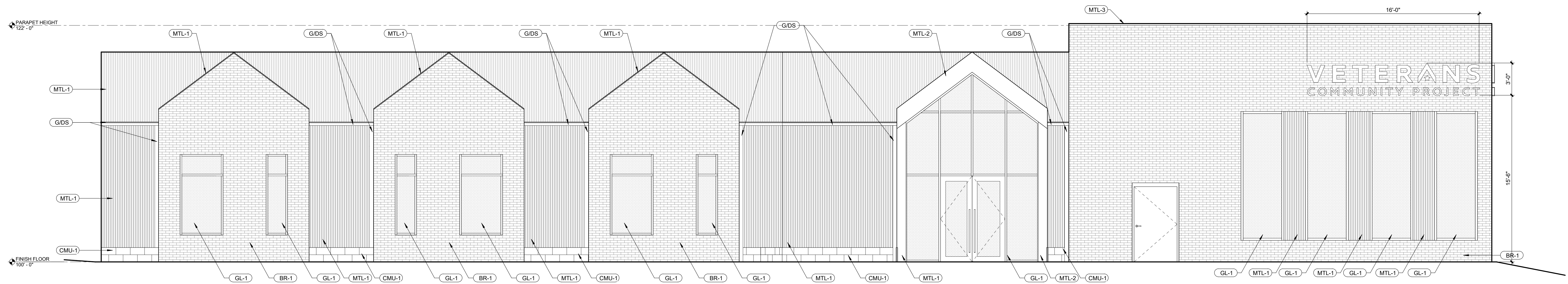
8787 RENNER BLVD., SUITE 100
LENEXA, KANSAS 66219
913.498.1550
www.finklewilliams.com

HEET TITLE

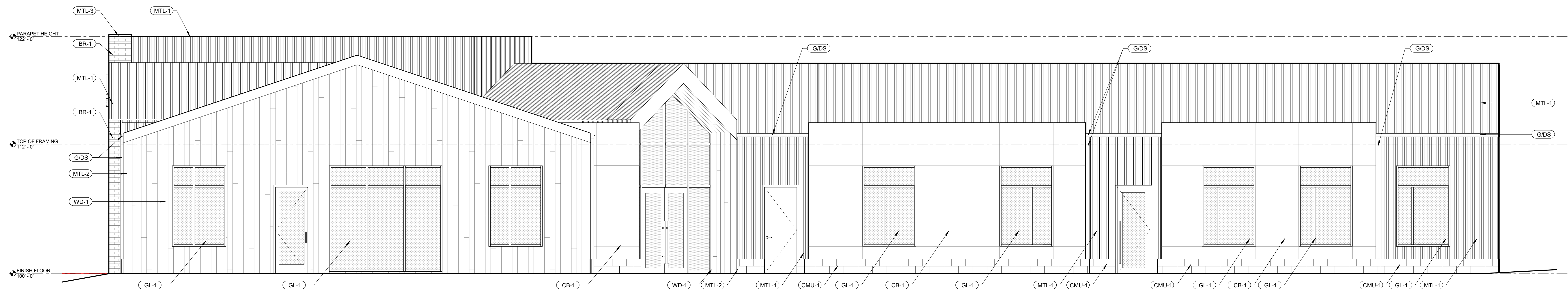
EXTERIOR ELEVATIONS

EET NUMBER

4A4.1



4A4.1	SCALE : 1/4" = 1'-0"
--------------	----------------------



4A4.1	SCALE : 1/4" = 1'-0"
--------------	----------------------



6767 N. 60th Street
Milwaukee, WI 53223

Project No.:	22043
Date:	Jan. 8th, 2024
Issued For:	Planning Review

[illegible]

REGISTRATION

NOT FOR CONSTRUCTION

PROJECT TEAM

ARCHITECT	FINKLE+WILLIAMS ARCHITECTURE
CIVIL	CIVIL CONSULTANT
LANDSCAPE	LANDSCAPE
STRUCTURAL	STRUCTURAL
PLUMBING	PLUMBING
MECHANICAL	MECHANICAL
ELECTRICAL	ELECTRICAL
FIRE PROTECTION	FIRE PROTECTION
CONTRACTOR	GC



8787 RENNER BLVD., SUITE 100
LENEXA, KANSAS 66219
913.498.1550
www.finklewilliams.com

SHEET TITLE

EXTERIOR ELEVATIONS

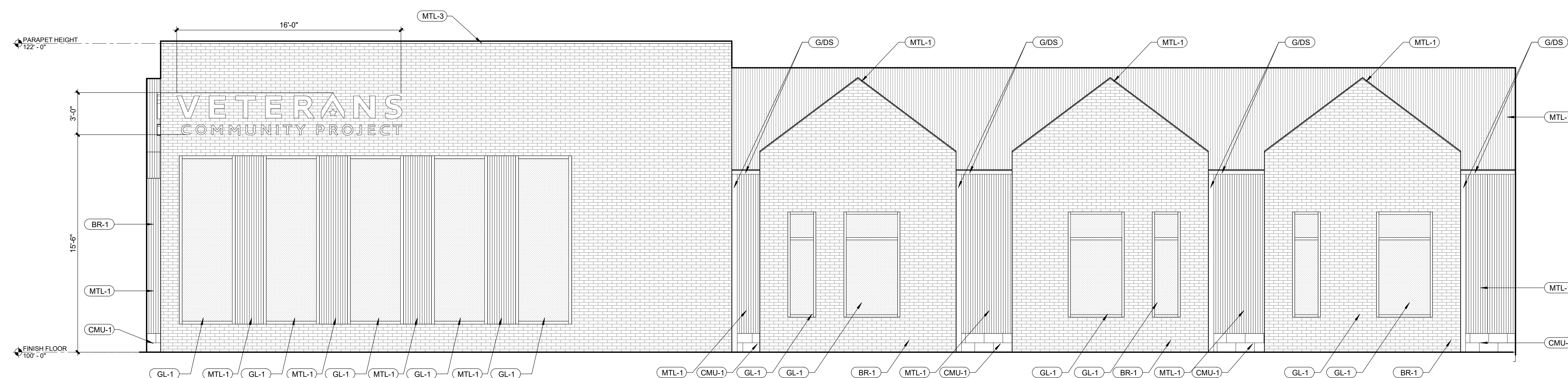
SHEET NUMBER

4A4.2



2	WEST ELEVATION
---	----------------

4A4.2	SCALE : 1/4" = 1'-0"
-------	----------------------



1	EAST ELEVATION
---	----------------

4A4.2	SCALE : 1/4" = 1'-0"
--------------	----------------------