

# COMMUNICABLE DISEASE UPDATE

Kirsten Johnson  
Commissioner of Health

BOARD OF HEALTH JANUARY 5, 2023



LIVING YOUR BEST LIFE.



# CURRENT CASE BURDEN



CITY OF MILWAUKEE  
**HEALTH DEPARTMENT**

# KEY METRICS

## Key Indicator Statuses: Updated Tuesdays and Thursdays

Percent Total City of Milwaukee Residents with Completed Primary COVID-19 Vaccine Series

**54.89%**

*Note: Previously, the dashboard displayed vaccination rates for adult residents only. It now displays all city residents, including children. As a result, vaccination rates have dropped.*

Case Burden

**116.7 Confirmed Cases per 100K**



CDC Community Levels (Updated Fridays)

**MEDIUM COVID-19 COMMUNITY LEVEL**

**You should:**

- Talk to your healthcare provider about whether you need to wear a mask and take other precautions if you're at **high risk for severe illness**
- Stay up to date with COVID-19 vaccines
- Get tested if you have symptoms

14-Day Wastewater Trend for Milwaukee Jones Island



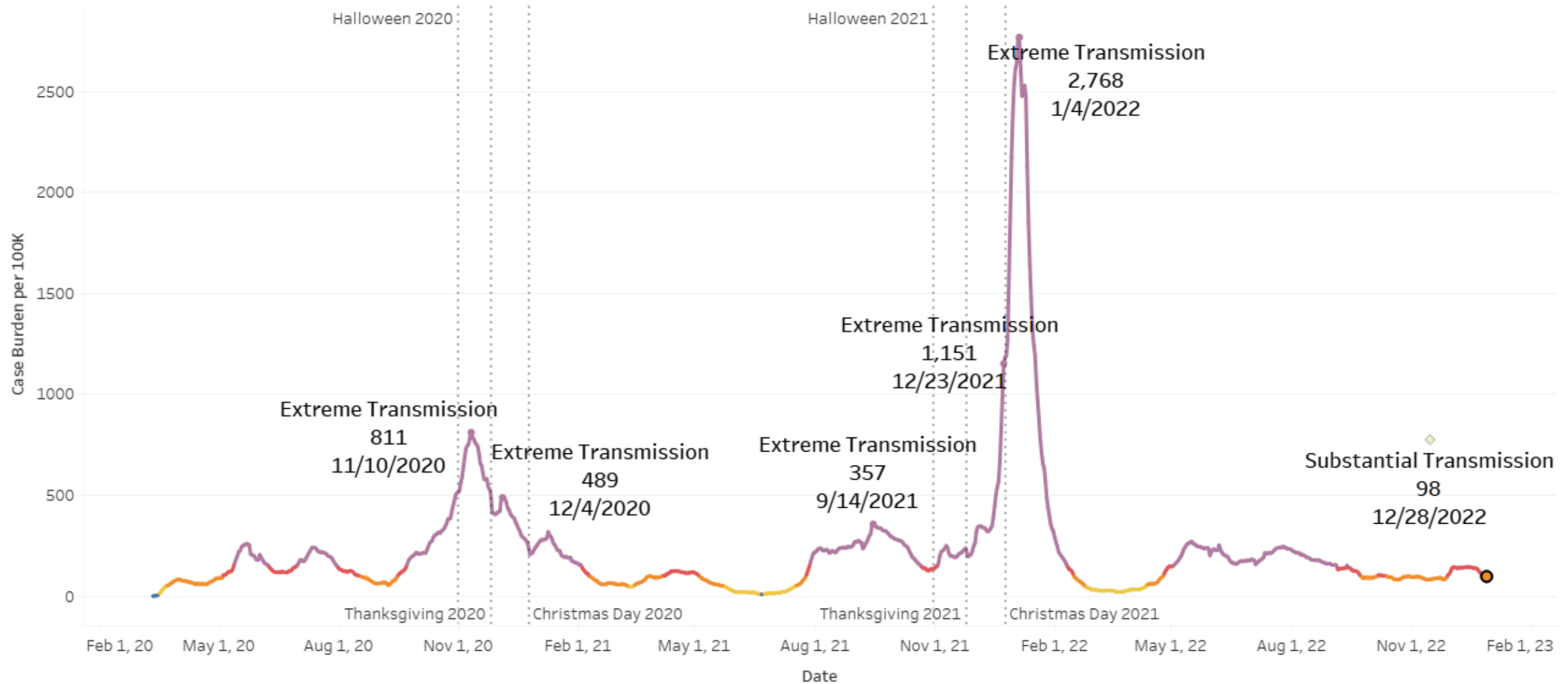
Category:  
**Very high**

Trajectory:  
**No alert**

**Category:** The average of the three most recent SARS-CoV-2 measurements is **very high** compared to the past 6 months of data.

**Trajectory:** Between 12/11/22 and 12/25/22, wastewater concentrations of SARS-CoV-2 in Milwaukee (Jones Island) **did not significantly increase**.

# CURRENT CASE BURDEN



\*Metric excludes last 4 days to account for delays in reporting and allow trends to stabilize.

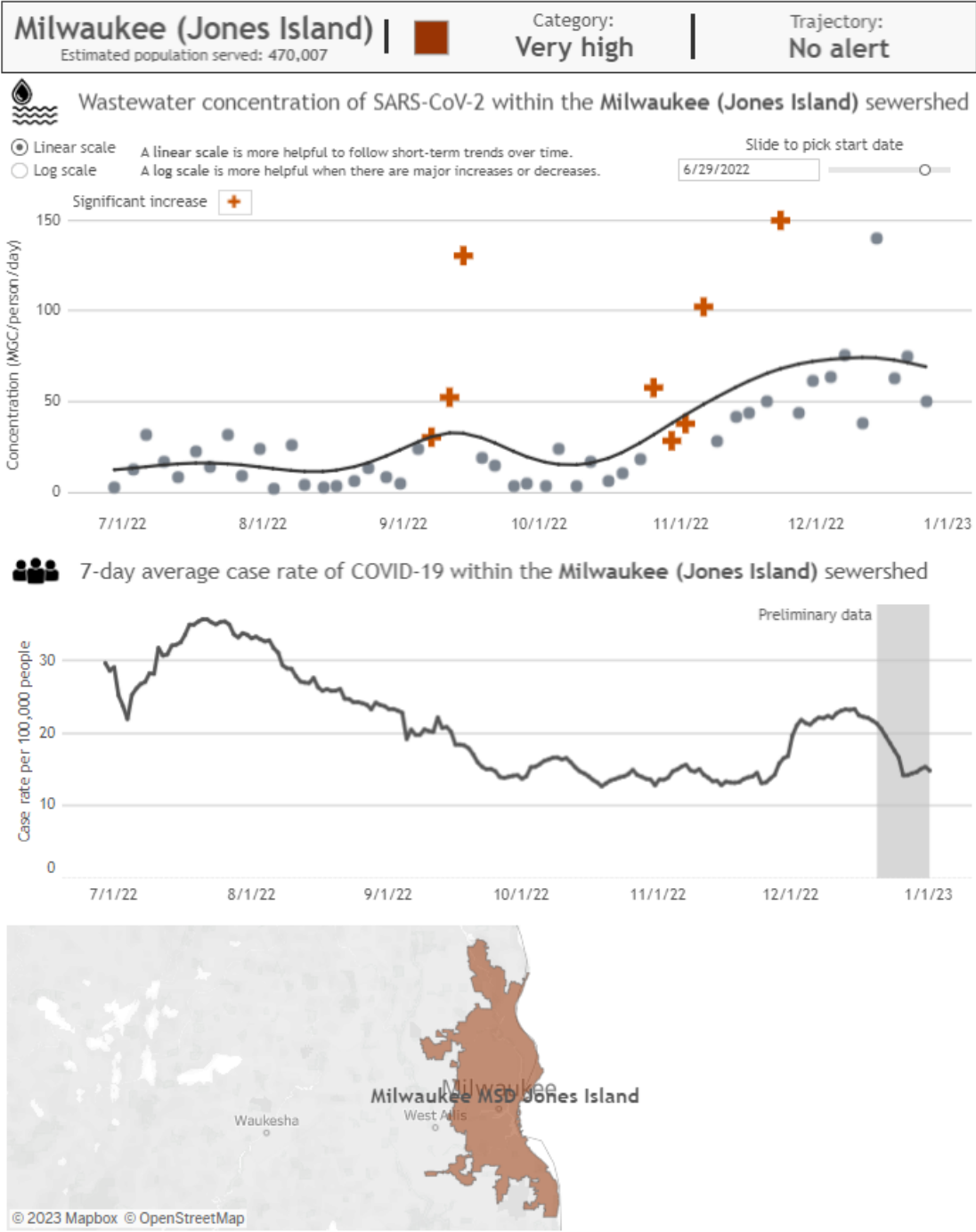
Data Source: Wisconsin Electronic Disease Surveillance System (WEDSS) via DHS

Last Updated: 1/3/2023 12:22:02 PM

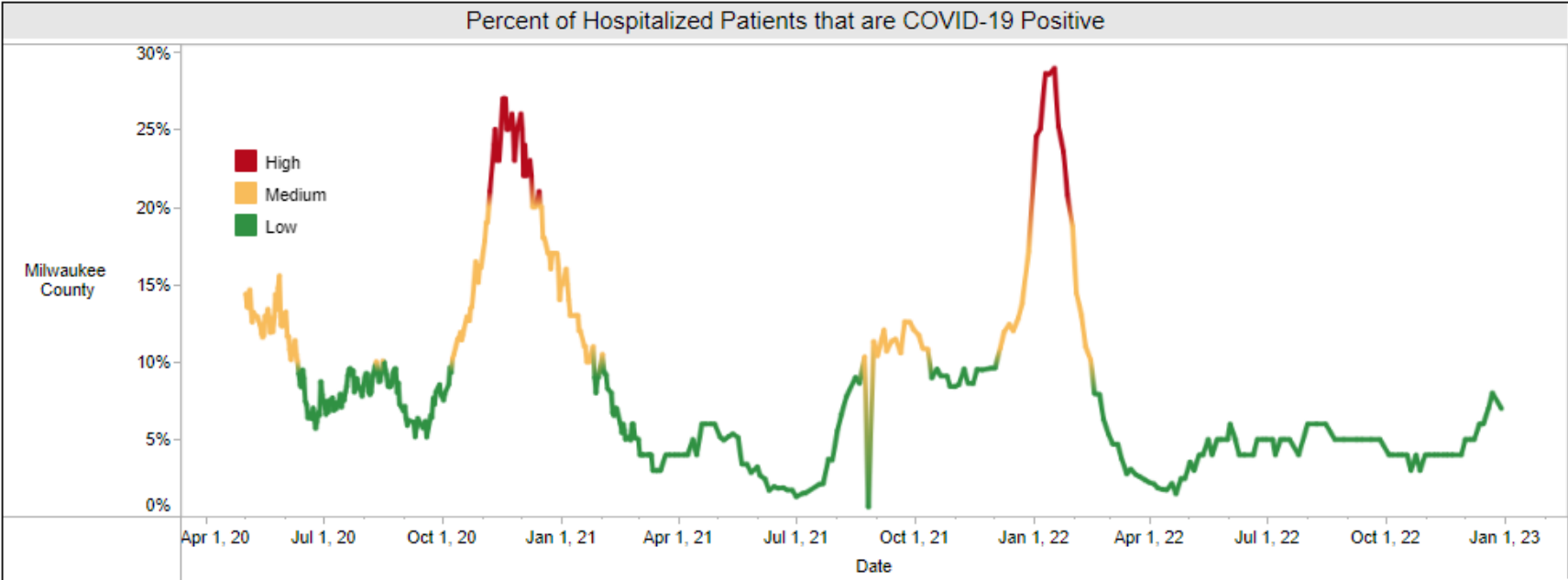
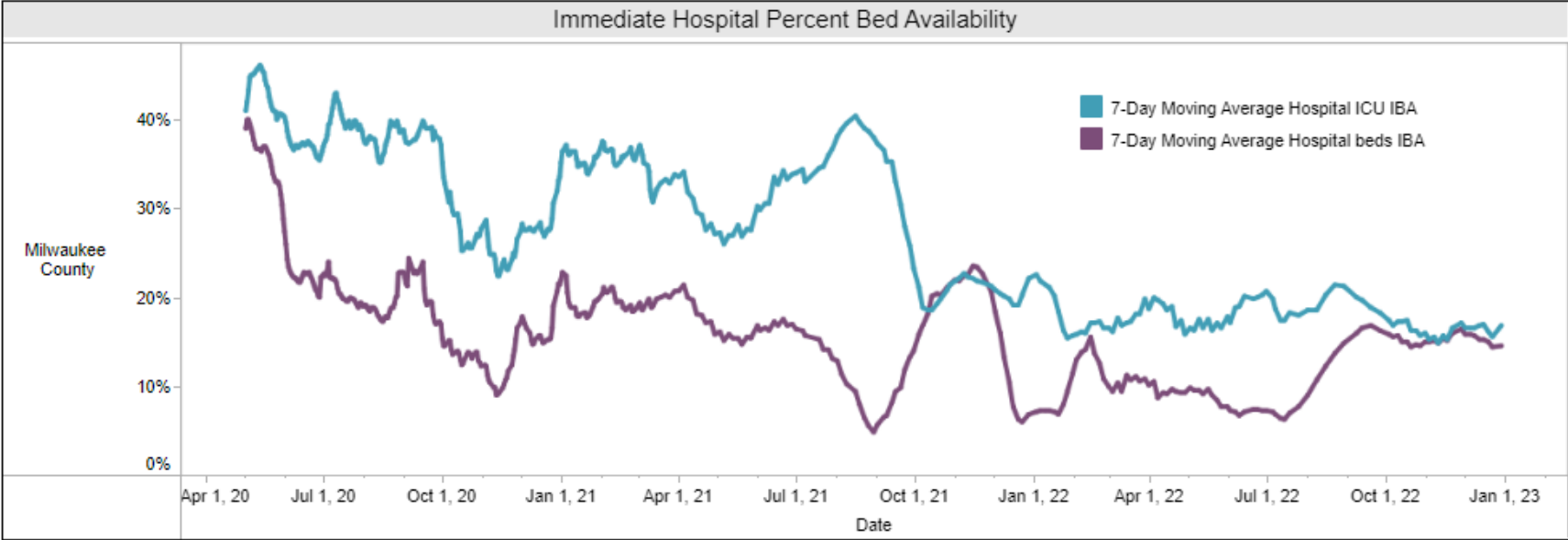
Sewershed-specific SARS-CoV-2 data

Click on the list to select a sewershed.  
Click again to deselect.

- Appleton
- Ashland
- Baraboo
- Black River Falls
- Brookfield (Fox River)
- Clintonville
- De Pere
- Eau Claire
- Green Bay
- Hartford
- Hayward
- Hudson
- Janesville
- Kenosha
- La Crosse
- Lodi
- Madison
- Manitowoc
- Marinette
- Marshfield
- Mauston
- Menomonie
- Merrill
- Milwaukee (Jones Island)
- Milwaukee (South Shore)
- Monroe
- Oconomowoc
- Oshkosh
- Peshigo
- Platteville
- Plymouth
- Portage
- Racine
- River Falls
- Sheboygan
- Spencer
- Stevens Point
- Superior
- Sun Prairie
- Viroqua
- Watertown
- Waupaca
- Wausau
- Algoma
- Beloit



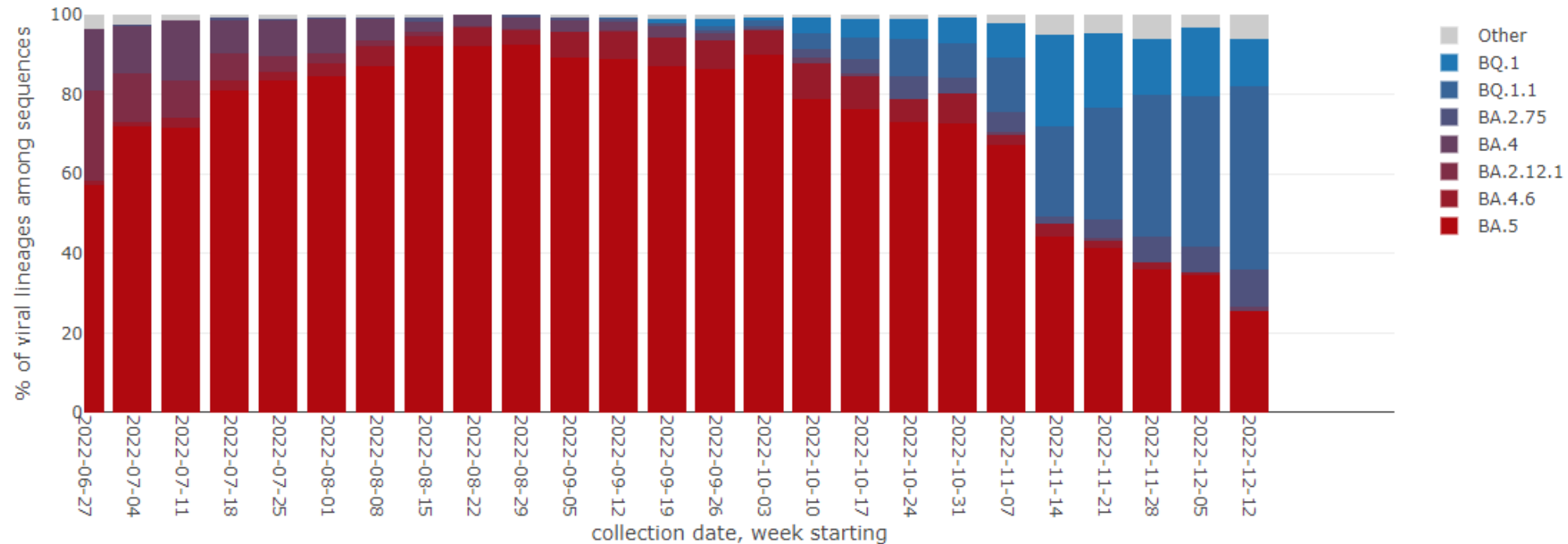
# HOSPITALIZATIONS



# VARIANTS IN WI

- Omicron is 100% of cases, BA.5 remains a predominant strain while subvariants of BQ.1 and BQ.1.1 are continuing to increase.

## VARIANT REPORT



Date Range:



# VACCINATIONS



CITY OF MILWAUKEE  
**HEALTH DEPARTMENT**



# VACCINE UPDATE

- 63.8% of adults (16+) completed primary series
- 54.8% of total residents completed primary series
- 29.6% of total residents have received a booster
  - 11.8% of total residents have received a bivalent booster



# DEMOGRAPHIC TABLE

Vaccinated City of Milwaukee Residents By Race/Ethnicity

| Race/Ethnicity               | 2019 ACS Population Estimate | At Least One Dose | Percent Population w/ At Least 1 Dose | Completed Primary Series | Percent Population Completed Primary Series | At Least One Booster (Monovalent or Bivalent) | Percent Population w/ At Least One Booster | Received Bivalent Booster | Percent Population w/ Bivalent Booster |
|------------------------------|------------------------------|-------------------|---------------------------------------|--------------------------|---|---|--|---------------------------|--|
| Black or African-American    | 227,829                      | 109,901           | 48.2%                                 | 98,265                   | 43.1%                                       | 48,069  | 21.1%                                      | 18,020                    | 7.9%                                   |
| Hispanic or Latino           | 112,817                      | 71,090            | 63.0%                                 | 64,189                   | 56.9%                                       | 29,396  | 26.1%                                      | 8,870                     | 7.9%                                   |
| Other Race                   | 17,258                       | 13,077            | 75.8%                                 | 11,803                   | 68.4%                                       | 5,287   | 30.6%                                      | 2,036                     | 11.8%                                  |
| American Indian or Alaska .. | 2,763                        | 2,154             | 78.0%                                 | 1,980                    | 71.7%                                       | 1,073   | 38.8%                                      | 429                       | 15.5%                                  |
| White                        | 208,521                      | 128,689           | 61.7%                                 | 121,925                  | 58.5%                                       | 82,521  | 39.6%                                      | 38,447                    | 18.4%                                  |
| Asian or Pacific Islander    | 25,360                       | 21,349            | 84.2%                                 | 19,446                   | 76.7%                                       | 8,868   | 35.0%                                      | 2,251                     | 8.9%                                   |
| Grand Total                  | 594,548                      | 346,260           | 58.2%                                 | 317,608                  | 53.4%                                       | 175,214                                       | 29.5%                                      | 70,053                    | 11.8%                                  |

Vaccinated City of Milwaukee Residents By Age Group

|                   | 2019 ACS Population Estimate | At Least One Dose | Percent of Population w/ At Least One Dose | Completed Primary Series | Percent of Population Completed Primary Series | At Least One Booster (Monovalent or Bivalent) | Percent of Population w/ At Least One Booster | Received Bivalent Booster | Percent of Population w/Bivalent Booster |
|-------------------|------------------------------|-------------------|--|--------------------------|--|---|---|---------------------------|--|
| Under 5 years     | 44,065                       | 3,349             | 7.6%                                       | 1,530                    | 3.5%   | 67  | 0.2%  | 30                        | 0.1%                                     |
| 5 to 11 years     | 61,519                       | 16,957            | 27.6%                                      | 14,101                   | 22.9%  | 3,604   | 5.9%  | 1,644                     | 2.7%                                     |
| 12 to 15 years    | 32,878                       | 17,755            | 54.0%                                      | 15,911                   | 48.4%  | 5,709   | 17.4%   | 1,916                     | 5.8%                                     |
| 16 to 19 years    | 36,222                       | 19,220            | 53.1%                                      | 17,027                   | 47.0%  | 6,180   | 17.1%   | 1,348                     | 3.7%                                     |
| 20 to 24 years    | 50,576                       | 30,699            | 60.7%                                      | 26,969                   | 53.3%  | 10,406  | 20.6%   | 2,559                     | 5.1%                                     |
| 25 to 34 years    | 101,565                      | 64,739            | 63.7%                                      | 57,996                   | 57.1%  | 26,245  | 25.8%   | 8,011                     | 7.9%                                     |
| 35 to 44 years    | 74,841                       | 53,205            | 71.1%                                      | 48,876                   | 65.3%  | 24,653  | 32.9%   | 8,169                     | 10.9%                                    |
| 45 to 54 years    | 66,835                       | 47,976            | 71.8%                                      | 44,863                   | 67.1%  | 26,021  | 38.9%   | 9,229                     | 13.8%                                    |
| 55 to 59 years    | 34,030                       | 24,614            | 72.3%                                      | 23,349                   | 68.6%  | 15,412  | 45.3%   | 6,345                     | 18.6%                                    |
| 60 to 64 years    | 29,689                       | 23,930            | 80.6%                                      | 22,875                   | 77.0%  | 16,786  | 56.5%   | 7,904                     | 26.6%                                    |
| 65 to 74 years    | 37,530                       | 34,245            | 91.2%                                      | 33,022                   | 88.0%  | 27,299  | 72.7%   | 15,200                    | 40.5%                                    |
| 75 to 84 years    | 16,494                       | 12,574            | 76.2%                                      | 12,103                   | 73.4%  | 10,318  | 62.6%   | 5,838                     | 35.4%                                    |
| 85 years and over | 8,304                        | 4,297             | 51.7%                                      | 4,091                    | 49.3%  | 3,511   | 42.3%   | 1,946                     | 23.4%                                    |
| Grand Total       | 594,548                      | 353,560           | 59.5%                                      | 322,713                  | 54.3%  | 176,211                                       | 29.6%   | 70,139                    | 11.8%                                    |

# CDC UPDATES

# CDC UPDATES

## VACCINES

### What You Need to Know

- Updated (bivalent) boosters became available on:
  - **September 2, 2022**, for people aged 12 years and older
  - **October 12, 2022**, for people aged 5–11 years
  - **December 9, 2022**, for children aged 6 months–4 years who completed the Moderna COVID-19 vaccine primary series
- Updated (bivalent) Pfizer-BioNTech COVID-19 vaccine also became available on **December 9, 2022** for children aged 6 months–4 years to complete the primary series.
- Getting a COVID-19 vaccine after you recover from COVID-19 infection provides added protection against COVID-19.
- If you recently had COVID-19, you **may** consider [delaying your next vaccine dose \(primary dose or booster\)](#) by 3 months from when your symptoms started or, if you had no symptoms, when you first received a positive test.



### Updated Boosters Are Recommended

CDC recommends one updated (bivalent) booster dose:

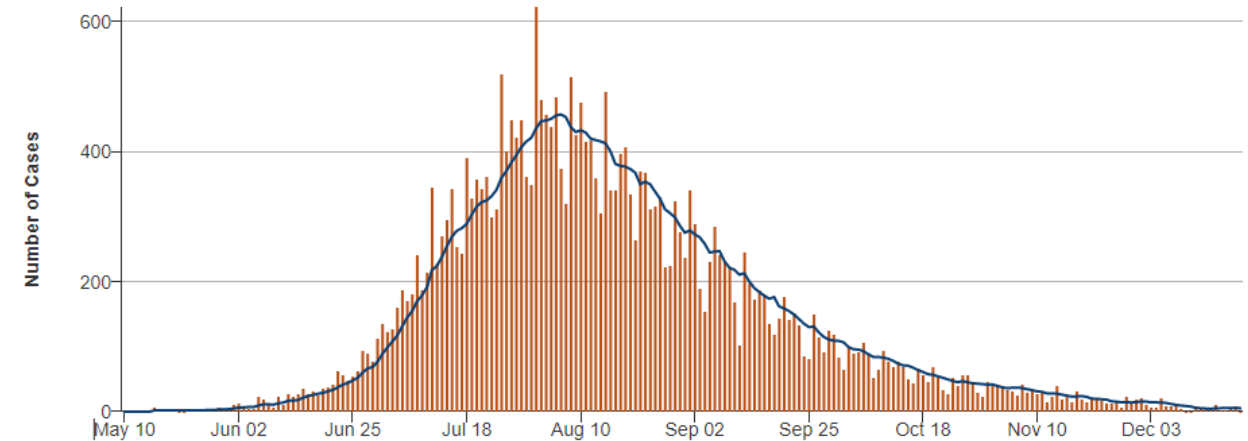
- For everyone **aged 5 years and older** if it has been at least **2 months** since your last dose.
- **For children aged 6 months–4 years** who **completed the Moderna** primary series and if it has been at least **2 months** since their last dose.

# MPOX (MONKEYPOX)

# CITY OF MILWAUKEE CASES

- First case identified July 8<sup>th</sup>, 2022
  - 13 cases in July
  - 16 cases in August
  - 3 cases in September
  - 3 cases in October
  - 0 cases in November and December
  - 87 total cases in Wisconsin
- 
- Nationally cases are plateauing

Daily Mpox Cases and 7 Day Daily Average



# OTHER RESPIRATORY VIRUSES

RSV, FLU, ETC,

# INFRASTRUCTURE GRANT AWARD

5 YEARS, 8.1M



# QUESTIONS?



CITY OF MILWAUKEE  
**HEALTH DEPARTMENT**