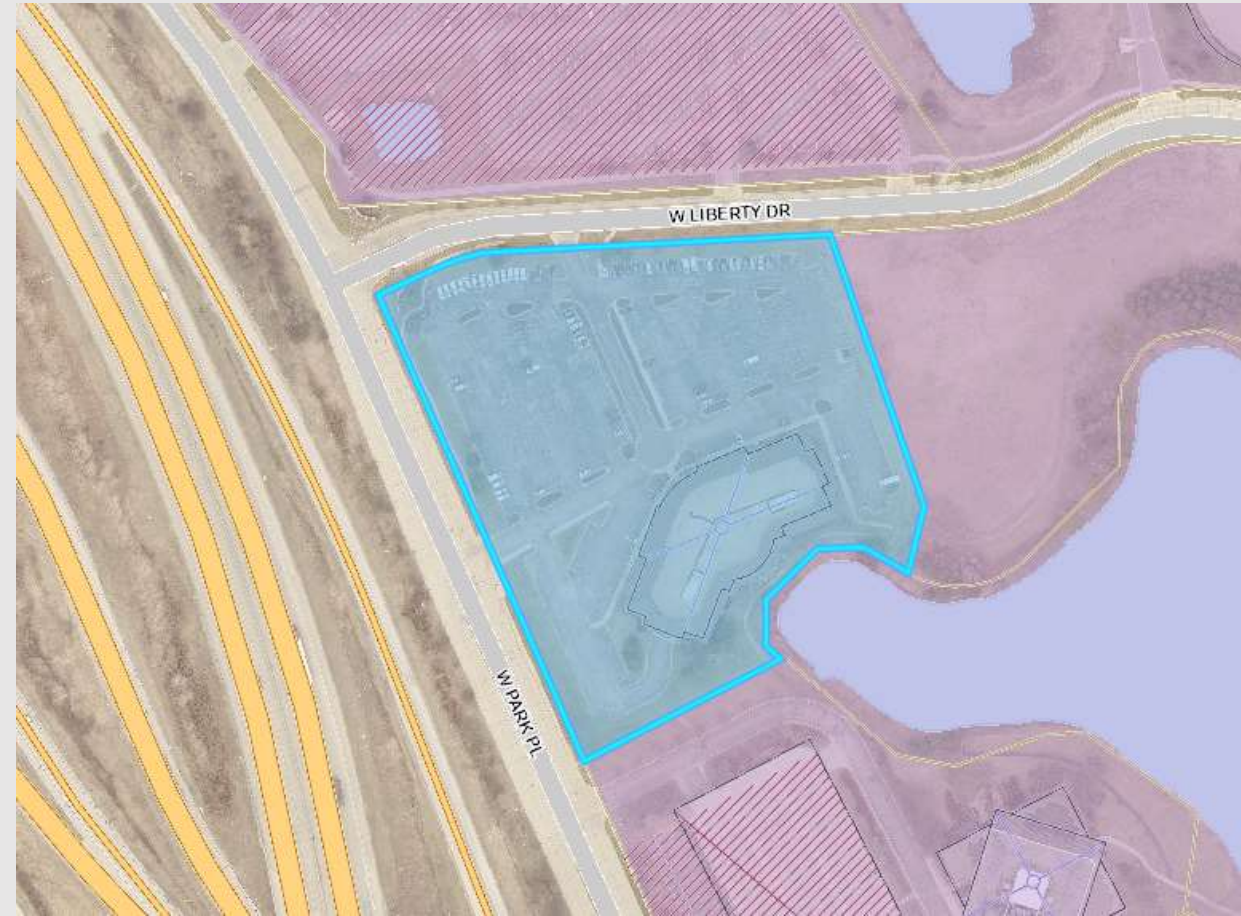


File No. 230726. A substitute resolution relating to a Minor Modification to the Detailed Planned Development known as Park Place, Stage 17 to allow additional signage on an existing building located at 11414 West Park Place, on the south side of West Liberty Drive, north of West Park Place, in the 9th Aldermanic District



File No. 230726. Context



File No. 230726. Consistency with Comprehensive Plan

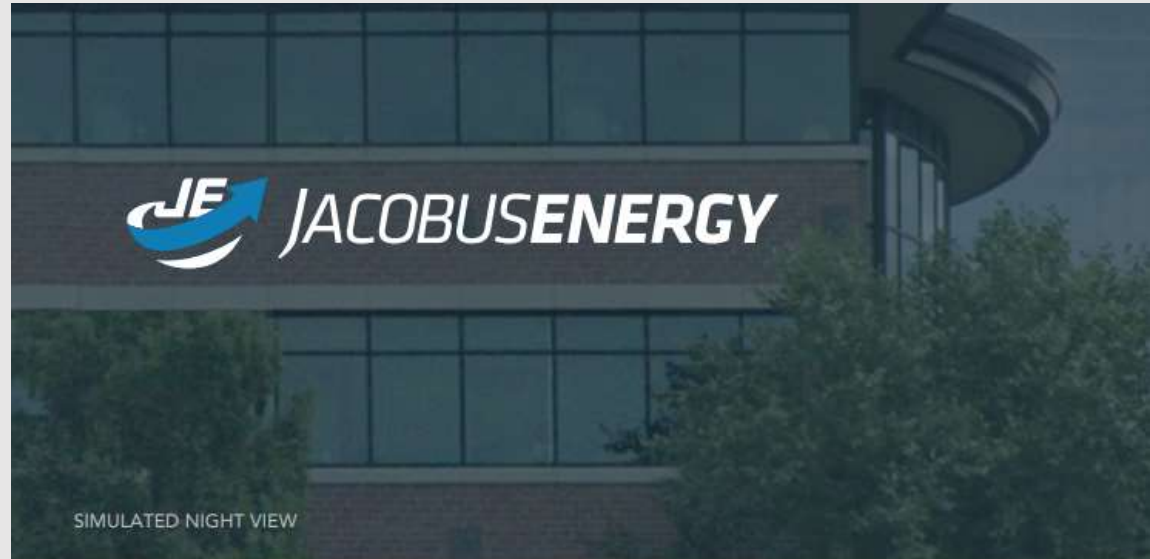


Northwest Side Plan

- Adopted in 2008 and amended in 2017 to include Granville Strategic Action Plan and Land Use Study.
- Recommendations pertaining to signage focus on ensuring that industrial and business parks have appropriate, uniform signage that identifies the park at each gateway.
- Feedback during the planning process regarding commercial signage focused on sign legibility.
- Proposed modification for an additional high quality building wall sign is consistent with the plan recommendations.

File No. 230726.

PROPOSED SIGN
LOCATION



File No. 230726.



File No. 230726.



47" x 96.25" = 31.4 sq. ft
25" x 240.25" = 41.7 sq. ft.
TOTAL SQ. FT. = 73.1 sq. ft.

CHANNEL LETTERS - 1

FACE LIT CHANNEL LETTERS, TRANS ACRYLIC FACES w/PRINTED PERF VINYL & STOCK/PRINTED TRANS VINYL, 5" RETURNS, FLUSH MOUNT TO FACE

QUANTITY: 1 SET, FINAL SIZE & LOCATION TBD

SCALE: 0.375" = 1'-0" APPROX 108 SQR FT AS SIZED