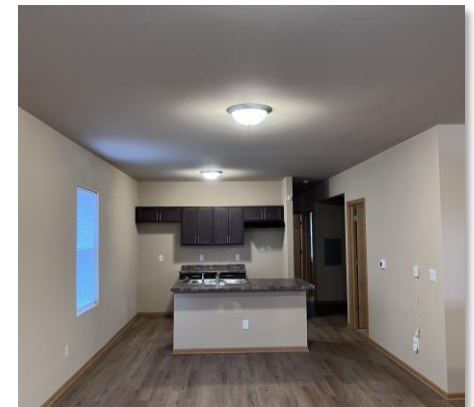




SBE, RPP, MERI & Section 3 Participation Report through June 30, 2023

Disclaimer:

On January 1, 2023, the City of Milwaukee required contractors to use the city-created Labor Compliance Reporting (“LCR”) system for tracking workforce hours. The information on the RPP Reports generated by the LCR system is error prone and unreliable. Until the LCR system is tested fully, we disclaim the accuracy of the RPP, SIA RPP and Section 3 information reported herein.



Submitted by:

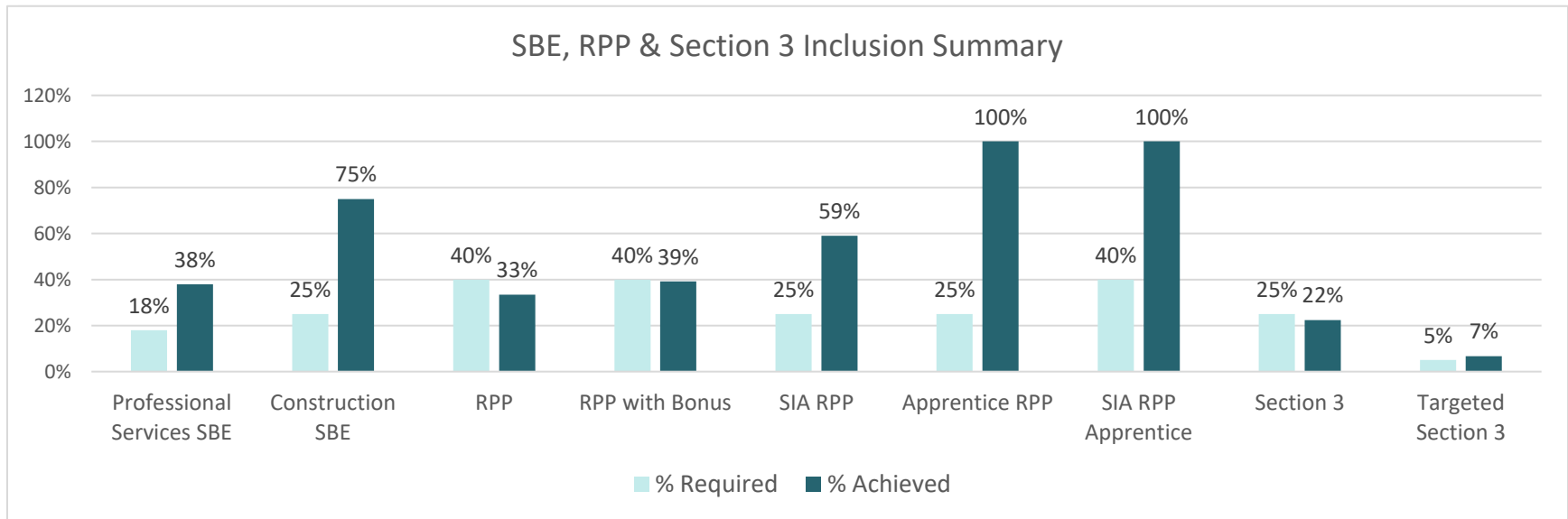


Date: July 22, 2023

Project Summary

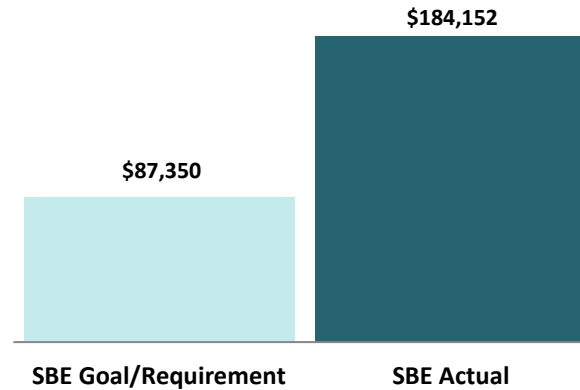
FIT Investment Group, Cinnaire, and CMS Contracting (“Developers”) are renovating 43 units of housing in Milwaukee’s Washington Park neighborhood. The project’s financing includes low-income housing tax credits awarded by Wisconsin Housing and Economic Development Authority (“WHEDA”), funds from the Milwaukee Employment/Renovation Initiative (MERI) and HOME funds from the City of Milwaukee.

Developer:	FIT Investment Group
Project Address:	Washington Park Neighborhood (various)
Professional Services Cost Subject to Inclusion	\$485,280
Applicable Professional Services Payments to Date	\$333,247
Construction Cost Subject to Inclusion	\$7,412,492
Applicable Construction Draw to Date	\$5,288,856



SBE Professional Services Inclusion

Through the period covered by this report, this project has achieved 38% SBE participation for Professional Services.



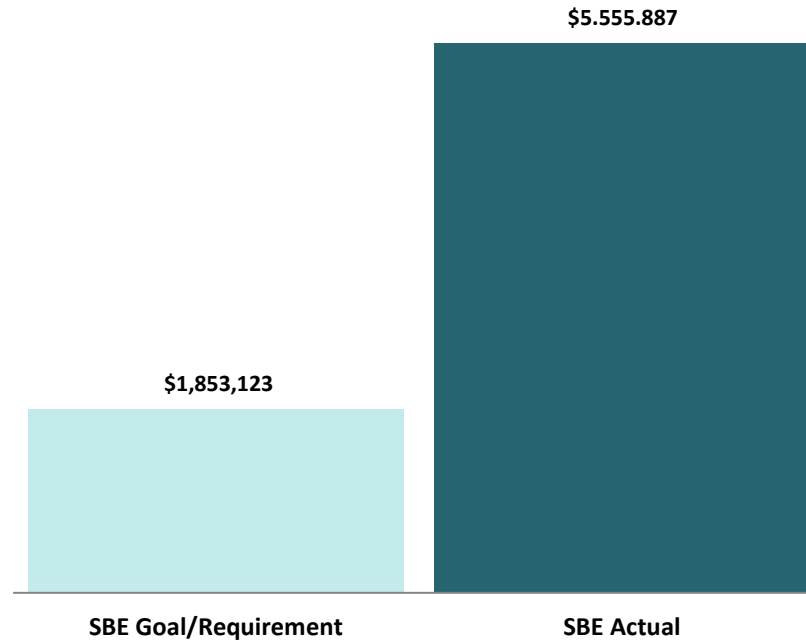
Total Value of SBE Payments	Goal/Requirement	Actual	Status
SBE Participation Percentage	18%	38%	+20%
Value of SBE Participation	\$87,350	\$184,152	+\$96,802

Table 1: Professional Services SBE Inclusion

NAME OF CERTIFIED FIRM	DBE/SBE	SUBCONTRACTOR OF	SERVICE PERFORMED OR MATERIALS SUPPLIED	SUBCONTRACT AWARD AMOUNT	TOTAL AMOUNT PAID TO DATE
Cross Management Services, Inc.	SBE	Washington Park United Homes LLC	Inclusion Consultant - Outreach	\$ 102,250	\$ 62,302
LF Green Development LLC	SBE	Washington Park United Homes LLC	Environmental Consultant	\$ 64,344	\$ 64,344
Quorum Architects Inc.	SBE	Washington Park United Homes LLC	Architect	\$ 17,558	\$ 17,558
TOTAL INCLUSION				\$ 184,152	\$ 144,204
INCLUSION, AS PERCENT OF PROFESSIONAL SERVICES COST SUBJECT TO INCLUSION				38%	
INCLUSION, AS PERCENT OF PROFESSIONAL SERVICES DRAW TO DATE					43%

SBE Construction Inclusion

Through the period covered by this report, this project has achieved 75% SBE participation for Construction.



Total Value of SBE Payments	Goal/Requirement	Actual	Status
SBE Participation Percentage	25.0%	75%	+50%
Value of SBE Participation	\$1,853,123	\$5,555,887	+\$3,702,764

Table 2: Construction SBE Inclusion

NAME OF CERTIFIED FIRM	DBE / SBE	SUBCONTRACTOR OF	SERVICE PERFORMED OR MATERIALS SUPPLIED	SUBCONTRACT AWARD AMOUNT	TOTAL AMOUNT PAID TO DATE
Aztec Plumbing LLC	DBE, SBE	CMS Contracting LLC	Plumbing	\$ 573,620	\$ 233,044
CMS Contracting LLC	SBE	CMS Contracting LLC	Concrete	\$ 184,000	\$ 182,792
CMS Contracting LLC	SBE	CMS Contracting LLC	Demolition	\$ 360,167	\$ 357,076
CMS Contracting LLC	SBE	CMS Contracting LLC	Demolition 2	\$ 31,500	\$ 29,925
CMS Contracting LLC	SBE	CMS Contracting LLC	Drywall	\$ 460,700	\$ 239,961
CMS Contracting LLC	SBE	CMS Contracting LLC	Earthwork	\$ 70,044	\$ 65,104
CMS Contracting LLC	SBE	CMS Contracting LLC	Electrician	\$ 71,530	\$ 22,325
CMS Contracting LLC	SBE	CMS Contracting LLC	Final Cleaning	\$ 32,250	\$ 8,788
CMS Contracting LLC	SBE	CMS Contracting LLC	Finish Carpentry	\$ 174,691	\$ 67,458
CMS Contracting LLC	SBE	CMS Contracting LLC	Finish Carpentry Material	\$ 588,347	\$ 586,749
CMS Contracting LLC	SBE	CMS Contracting LLC	Fire Protection	\$ 2,580	\$ 950
CMS Contracting LLC	SBE	CMS Contracting LLC	General Conditions	\$ 684,672	\$ 196,650
CMS Contracting LLC	SBE	CMS Contracting LLC	Insulation	\$ 135,233	\$ 94,050
CMS Contracting LLC	SBE	CMS Contracting LLC	Landscaping	\$ 80,000	\$ 21,850
CMS Contracting LLC	SBE	CMS Contracting LLC	Painting	\$ 84,136	\$ 44,650
CMS Contracting LLC	SBE	CMS Contracting LLC	Roofing	\$ 293,697	\$ 190,717
CMS Contracting LLC	SBE	CMS Contracting LLC	Rough Carpentry	\$ 819,999	\$ 515,805
CMS Contracting LLC	SBE	CMS Contracting LLC	Security Systems	\$ 60,200	\$ 28,310
CMS Contracting LLC	SBE	CMS Contracting LLC	Siding	\$ 446,039	\$ 285,932
CMS Contracting LLC	SBE	CMS Contracting LLC	Water Lateral	\$ 72,000	\$ 19,000
Hernandez Roofing LLC	DBE, MBE	CMS Contracting LLC	Roofing	\$ 147,055	\$ 147,055
Whire Electrical Services LLC	DBE	CMS Contracting LLC	Electrician	\$ 183,427	\$ 183,427
TOTAL INCLUSION				\$ 5,555,887	\$ 3,521,618
INCLUSION, AS PERCENT OF CONSTRUCTION COST SUBJECT TO INCLUSION				75%	
INCLUSION, AS PERCENT OF CONSTRUCTION DRAW TO DATE					67%

RPP Participation

As shown in Table 3 below, the RPP inclusion achieved is 33% and 39% when the bonus hours for SIA RPP and RPP Apprentice hours are included.

Table 3: RPP Participation by Contractor

Contractor	Trade	On-Site Construction Hours				
		Total Hours Worked	RPP Worker	RPP %	SIA RPP Hours	SIA RPP %
Advanced Restoration, Inc.	Tuckpointers	1,073.87	147.41	14%	147.41	100%
Aztec Plumbing LLC	Plumbers	687.50	687.50	100%	687.50	100%
CMS Contracting, LLC	Laborers	16,590.50	6,191.50	37%	2,532.00	41%
Handyman 83, LLC	Laborers	2,656.64				
Hernandez Roofing LLC	Roofers	972.50	771.00	79%	771.00	100%
Integrity Environmental Service	Laborers	1,148.00	899.00	78%	715.00	80%
Legacy Heating & Air Conditioning, LLC	Sheet Metal Worker	2,712.00				
Northcott Neighborhood House, LLC	Landscaper	1,212.00	793.50	65%	647.50	82%
Northern Exposure Landscaping	Laborers	96.75				
WHIRE Electrical Services	Electricians	1,963.00	238.50	12%	238.50	100%
Subtotal		29,112.76	9,728.41	33%	5,738.91	59%
Bonus SIA RPP Hours			1,413.82			
Bonus Apprentice RPP Hours			257.81			
Total RPP Hours		29,112.76	11,400.04	39%		

Table 4: RPP Participation by Craft

Craft	RPP Hours	# of RPP Workers
Carpenter	6,191.50	3
Electrician	238.50	1
Laborer	1,046.41	18
Landscaper	793.50	3
Plumber	687.50	1
Roofer	771.00	4
Total	9,728.41	30

Table 5: RPP Participation by Zip Code

Zip Code	RPP Hours	# of RPP Workers
53204	398.50	4
53207	64.00	1
53208	2,817.50	2
53210	1,507.45	3
53215	1,938.46	16
53216	2,840.50	2
53221	16.00	1
53209	146.00	1
Total	9,728.41	30

Table 6: RPP Participation by Ethnicity

Race	RPP Hours	# of RPP Workers
African-American	7,223.50	7
Hispanic	2,357.50	21
Not Specified	147.41	2
Total	9,728.41	30

Table 7: RPP Participation by Gender

Gender	RPP Hours	# of RPP Workers
Male	9,728.41	30
Total	9,728.41	30

Table 8: Apprentice Participation by Craft

Craft	# of Apprentices / OJT Trainees	Total Hours Worked	RPP Apprentice Hours	RPP Apprentice %	SIA RPP Apprentice Hours	SIA RPP Apprentice %
Plumber	1	687.50	687.50	100%	687.50	100%
Total	1	687.50	687.50	100%	687.50	100%

Table 9: Apprentice Participation by Race

Race	Hours	# of Workers
Hispanic	687.50	1
Total	687.50	1

Table 10: Apprentice Participation by Gender

Gender	Total Hours	# of Workers
Male	687.50	1
Total	687.50	1

MERI RPP Participation

With over 9,728.41 hours performed by RPP workers, the MERI RPP requirement of 7,800 hours has been achieved.

Table 12: MERI

Category	Required RPP Hours	Hours Performed by RPP Workers
RPP Hours	7,800.00	9,728.41

Section 3 Participation

As shown in Table 12 below, the Section 3 inclusion achieved is 22% and 7% Targeted Section 3.

Table 12: Section 3 Summary

Contractor	Trade	On-Site Construction Hours				
		Total Hours Worked	Section 3 Worker Hours	% Section 3	Targeted Section 3	% Targeted Section 3
Advanced Restoration, Inc.	Tuckpointers	1,073.87				
Aztec Plumbing LLC	Plumbers	687.50	687.50	100%		
CMS Contracting, LLC	Laborers	16,590.50				
Handyman 83, LLC	Laborers	2,656.64				
Hernandez Roofing LLC	Roofers	972.50				
Integrity Environmental Service	Laborers	1,148.00	778.00	68%		
Legacy Heating & Air Conditioning, LLC	Sheet Metal Worker	2,712.00	2,712.00	100%		
Northcott Neighborhood House, LLC	Landscaper	1,212.00	285.50	24%		
Northern Exposure Landscaping	Laborers	96.75	96.75	100%		
WHIRE Electrical Services	Electricians	1,963.00	1,963.00	100%	1,963.00	100%
Total Hours		29,112.76	6,522.75	22%	1,963.00	7%