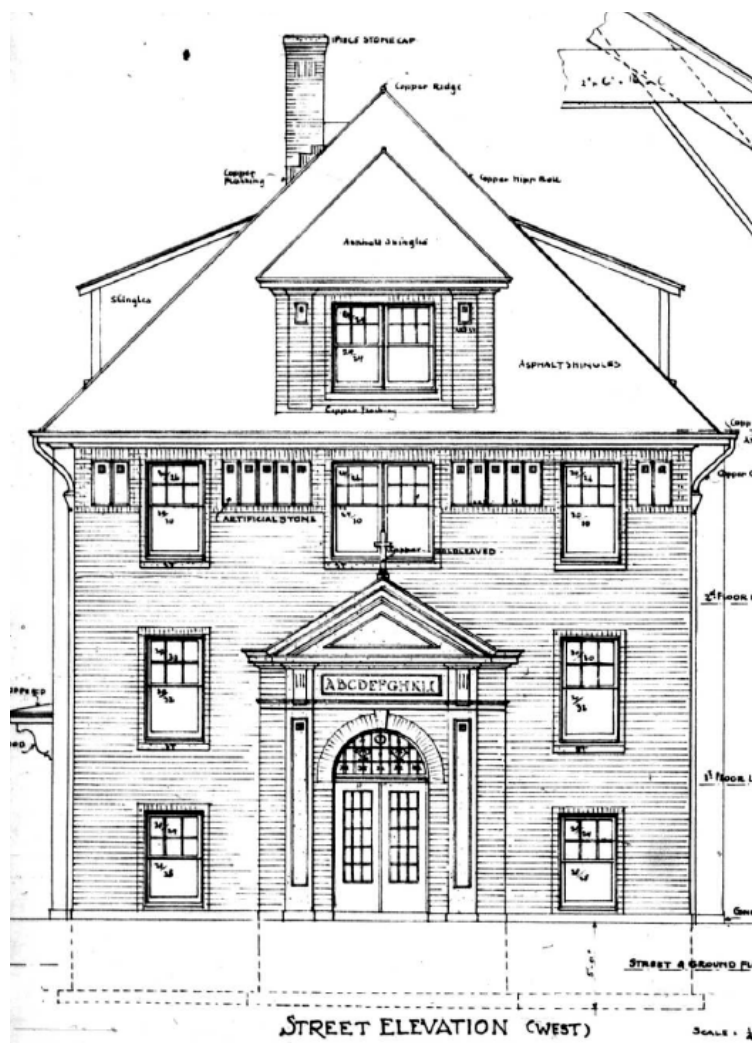


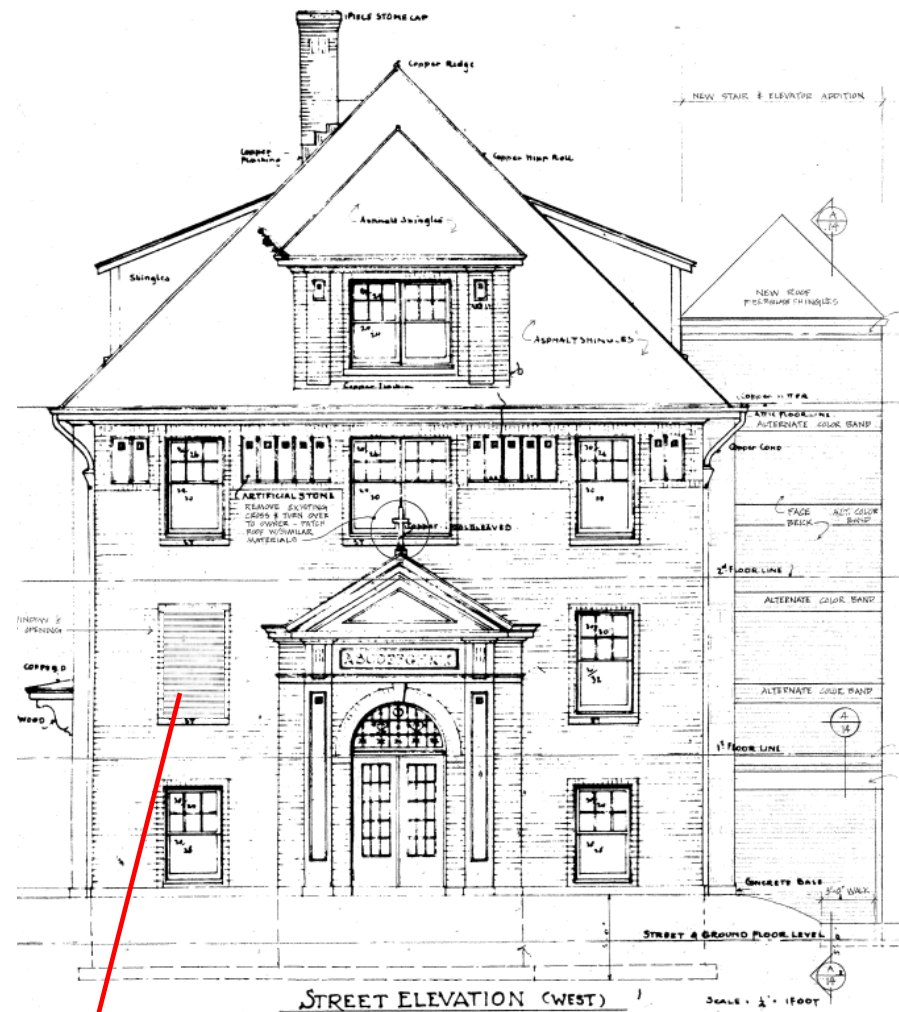
NOTE: ALL 1ST FLOOR WINDOWS WERE INSTALLED WITH UNEQUAL 'COTTAGE STYLE' SASHES, WHILE THE 2ND AND 3RD FLOORS HAVE EQUAL SASHES



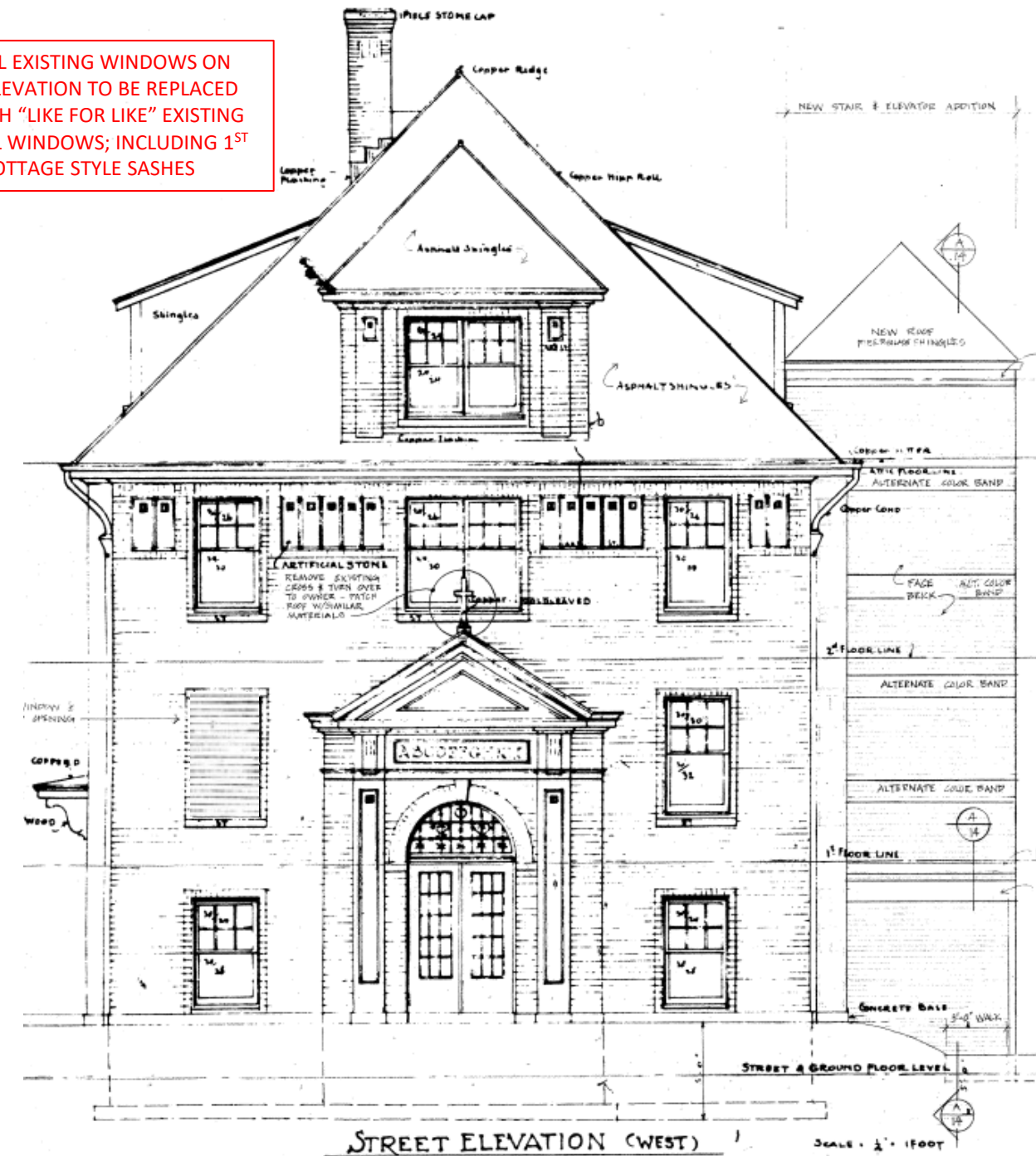
WINDOW WAS BRICKED OVER IN 1984 TO CREATE A MECHANICAL AND COMMUNITY LAUNDRY ROOM

1922 CONVENT DRAWINGS

NOTE: ALL EXISTING WINDOWS ON FRONT ELEVATION TO BE REPLACED TO MATCH "LIKE FOR LIKE" EXISTING ORIGINAL WINDOWS; INCLUDING 1ST FLOOR COTTAGE STYLE SASHES



1984 RENOVATION / ADDITION – AFFORDABLE HOUSING REFLECTS PRESENT DAY “AS-BUILT” CONDITIONS



PROPOSED 2023 NEW WINDOW SCOPE

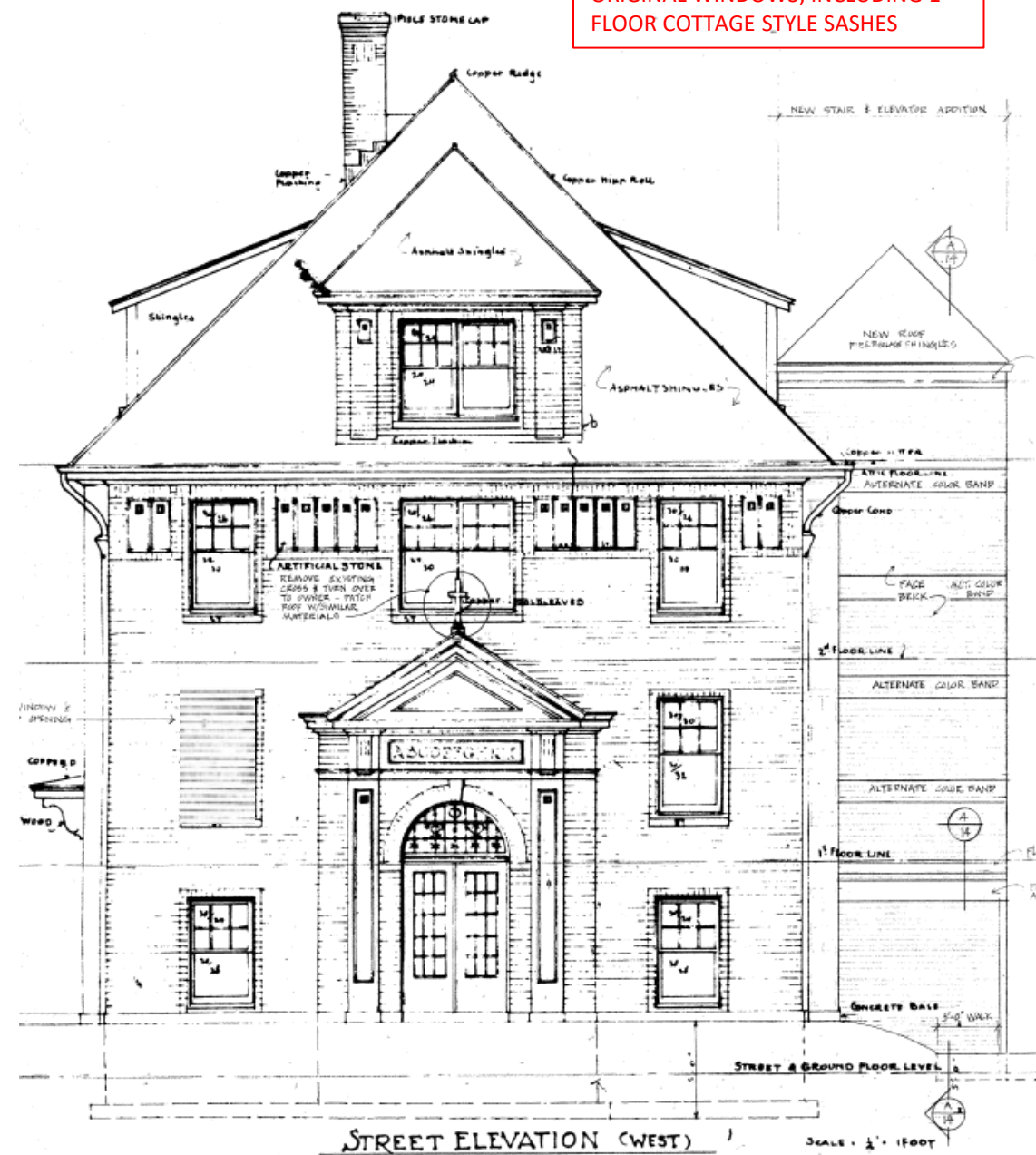


tarantino
& COMPANY

EAST BRADY STREET HISTORIC DISTRICT
#105983 ST. HEDWIG CONVENT
REGISTERED 1990

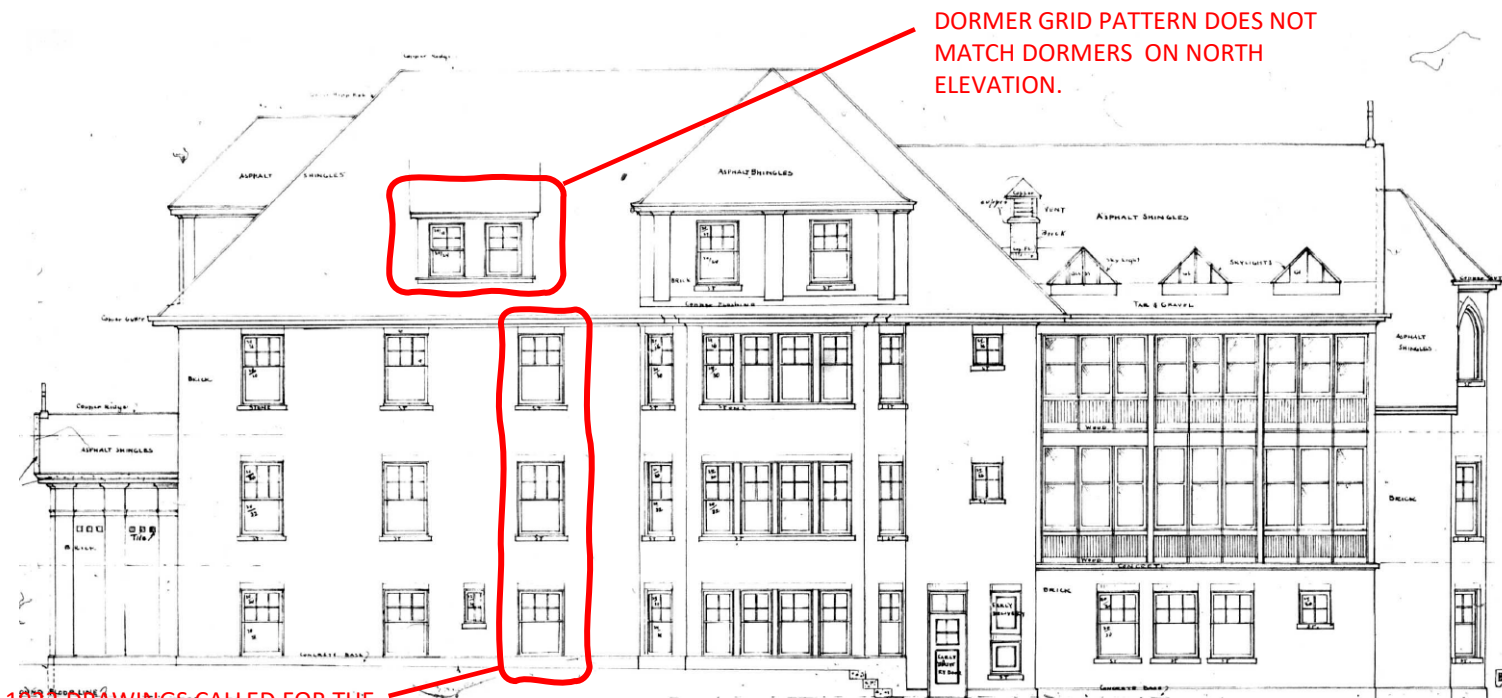
STREET “WEST” ELEVATION

NOTE: ALL EXISTING WINDOWS ON FRONT ELEVATION TO BE REPLACED TO MATCH "LIKE FOR LIKE" EXISTING ORIGINAL WINDOWS; INCLUDING 1ST FLOOR COTTAGE STYLE SASHES



PROPOSED 2023 NEW WINDOW SCOPE





DORMER GRID PATTERN DOES NOT MATCH DORMERS ON NORTH ELEVATION.

2ND, 3RD FLOOR HAVE 2 NARROW WINDOWS IN OPENING

SIDE BAY WINDOWS HAVE 2 VERTICAL GRILLES, SAME WITH ADJACENT WINDOWS
WINDOWS HAVE 3 VERTICAL GRILLES

1922 DRAWINGS CALLED FOR THE 1ST AND 2ND FLOOR WINDOWS TO HAVE EQUAL SASHES. THE 3RD FLOOR WINDOWS WERE TO BE UNEQUAL "COTTAGE" SASHES.

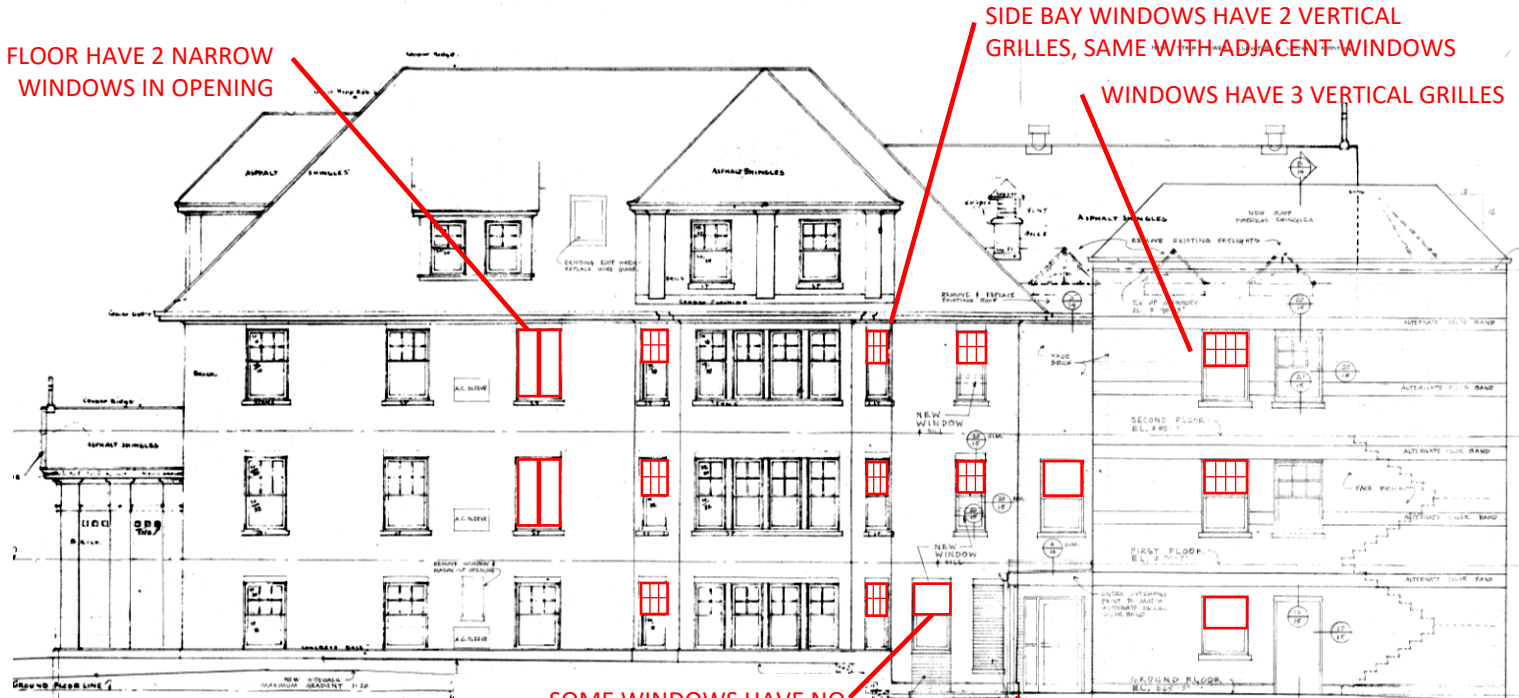
1922 CONVENT DRAWINGS

THE AS-BUILT CONDITIONS ARE 1ST FLOOR UNEQUAL SASHES, WHEREAS THE 2ND AND 3RD FLOOR HAVE EQUAL SASHES. TYPICAL ON ALL ELEVATIONS

NOTE: UNLESS SPECIFICALLY IDENTIFIED, ALL EXISTING WINDOWS TO BE REPLACED TO MATCH "LIKE FOR LIKE" EXISTING ORIGINAL WINDOWS; INCLUDING 1ST FLOOR COTTAGE STYLE SASHES

SHORT DORMER WINDOWS TO RETURN TO 1922 DESIGN INTENT FOR 2 VERTICAL SDLs / NO HORIZONTALS, WHICH IMPROVE GLASS PROPORTIONS AND AESTHETICS

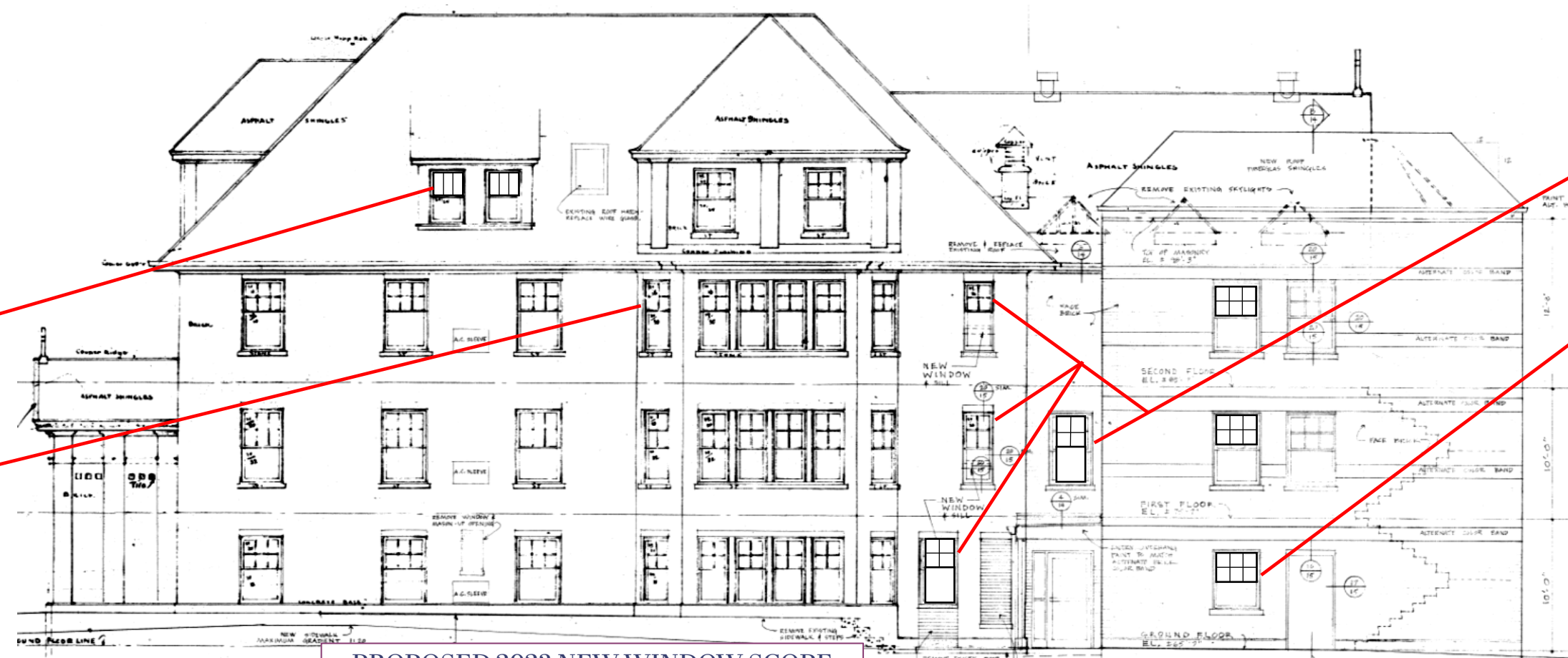
CHAMFERED WINDOWS ON EACH SIDE OF BAY WINDOW TO RETURN TO 1922 PATTERN WITH 1 VERTICAL SDL / 1 HORIZONTAL SDL TO MATCH FRONT BAY WINDOWS.



SOME WINDOWS HAVE NO GRILLES ABOVE THE SASH

ELEVATOR / STAIR ADDITION

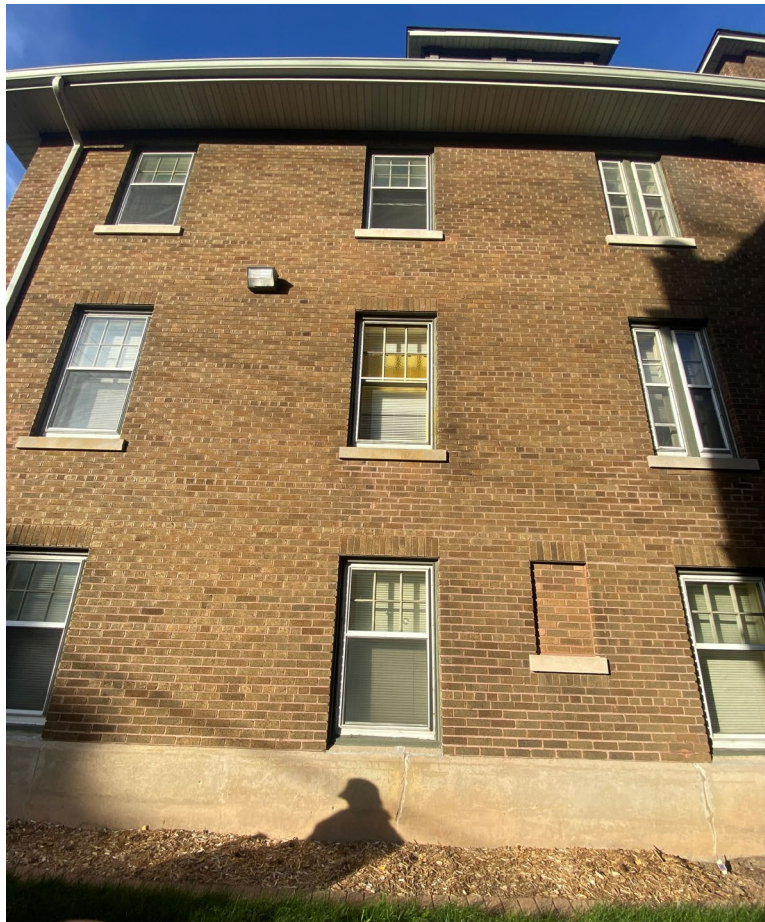
1984 RENOVATION / ADDITION – AFFORDABLE HOUSING REFLECTS PRESENT DAY "AS-BUILT" CONDITIONS



PROPOSED 2023 NEW WINDOW SCOPE

NARROW WINDOWS SHALL BE RETURNED TO MATCH THE 1922 DRAWINGS WITH 1 VERTICAL SDL / 1 HORIZONTAL SDL ABOVE SASH

VERTICAL STACK OF WINDOWS SHALL MATCH ADJACENT WINDOWS WITH 2 VERTICAL SDL / 1 HORIZONTAL SDL, TO MATCH PROPORTIONS OF REMAINING BUILDING INCLUDING 1ST FLOOR COTTAGE SASHES



NOTE: UNLESS SPECIFICALLY IDENTIFIED, ALL EXISTING WINDOWS TO BE REPLACED TO MATCH "LIKE FOR LIKE" EXISTING ORIGINAL WINDOWS; INCLUDING 1ST FLOOR COTTAGE STYLE SASHES

SHORT DORMER WINDOWS TO
RETURN TO 1922 DESIGN INTENT FOR
2 VERTICAL SDLS / NO HORIZONTALS,
WHICH IMPROVE GLASS
PROPORTIONS AND AESTHETICS

CHAMFERED WINDOWS ON EACH SIDE OF BAY WINDOW TO RETURN TO 1922 PATTERN WITH 1 VERTICAL SDL / 1 HORIZONTAL SDL TO MATCH FRONT BAY WINDOWS.



NARROW WINDOWS SHALL BE
RETURNED TO MATCH THE 1922
DRAWINGS WITH 1 VERTICAL SDL /
1 HORIZONTAL SDL ABOVE SASH

VERTICAL STACK OF WINDOWS SHALL MATCH ADJACENT WINDOWS WITH 2 VERTICAL SDL/ 1 HORIZONTAL SDL, TO MATCH PROPORTIONS OF REMAINING BUILDING INCLUDING 1ST FLOOR COTTAGE SASHES

NOTE: ALL 1ST FLOOR WINDOWS WERE INSTALLED WITH UNEQUAL 'COTTAGE STYLE' SASHES, WHILE THE 2ND AND 3RD FLOORS HAVE EQUAL SASHES

IN 1984 WHEN THE CHAPEL WAS CONVERTED TO A DWELLING UNIT, THE GOTHIC ARCHES WERE BRICKED IN AND WINDOW SILLS WERE LOWERED TO ACCOMMODATE OPERABLE WINDOWS. THE 3RD FLOOR WINDOWS HAVE NO GRILLES.

NOTE: UNLESS SPECIFICALLY IDENTIFIED, ALL EXISTING WINDOWS TO BE REPLACED TO MATCH "LIKE FOR LIKE" EXISTING ORIGINAL WINDOWS; INCLUDING 1ST FLOOR COTTAGE STYLE SASHES

NEW 3RD FLOOR WINDOWS TO HONOR ORIGINAL CHAPEL WINDOWS AND UNIQUENESS OF THIS SPACE. NO SDLs.

NEW 1ST & 2ND FLOOR WINDOWS TO PROVIDE CONSISTENCY ACROSS ALL BAY WINDOWS WITH 2 VERTICAL SDL / 1 HORIZONTAL SDL; 1ST FLOOR TO HAVE COTTAGE STYLE SASHES

1922 CONVENT DRAWINGS

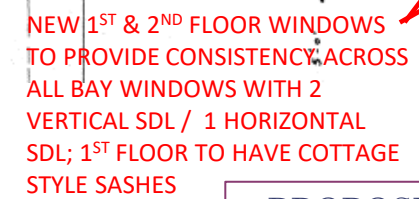
1984 RENOVATION / ADDITION – AFFORDABLE HOUSING REFLECTS PRESENT DAY “AS-BUILT” CONDITIONS

PROPOSED 2023 NEW WINDOW SCOPE

SIDE BAY WINDOWS HAVE INCONSISTENT GRILLE PATTERN; WHEREAS ALL SIDE & FRONT WINDOWS ARE THE SAME SIZE

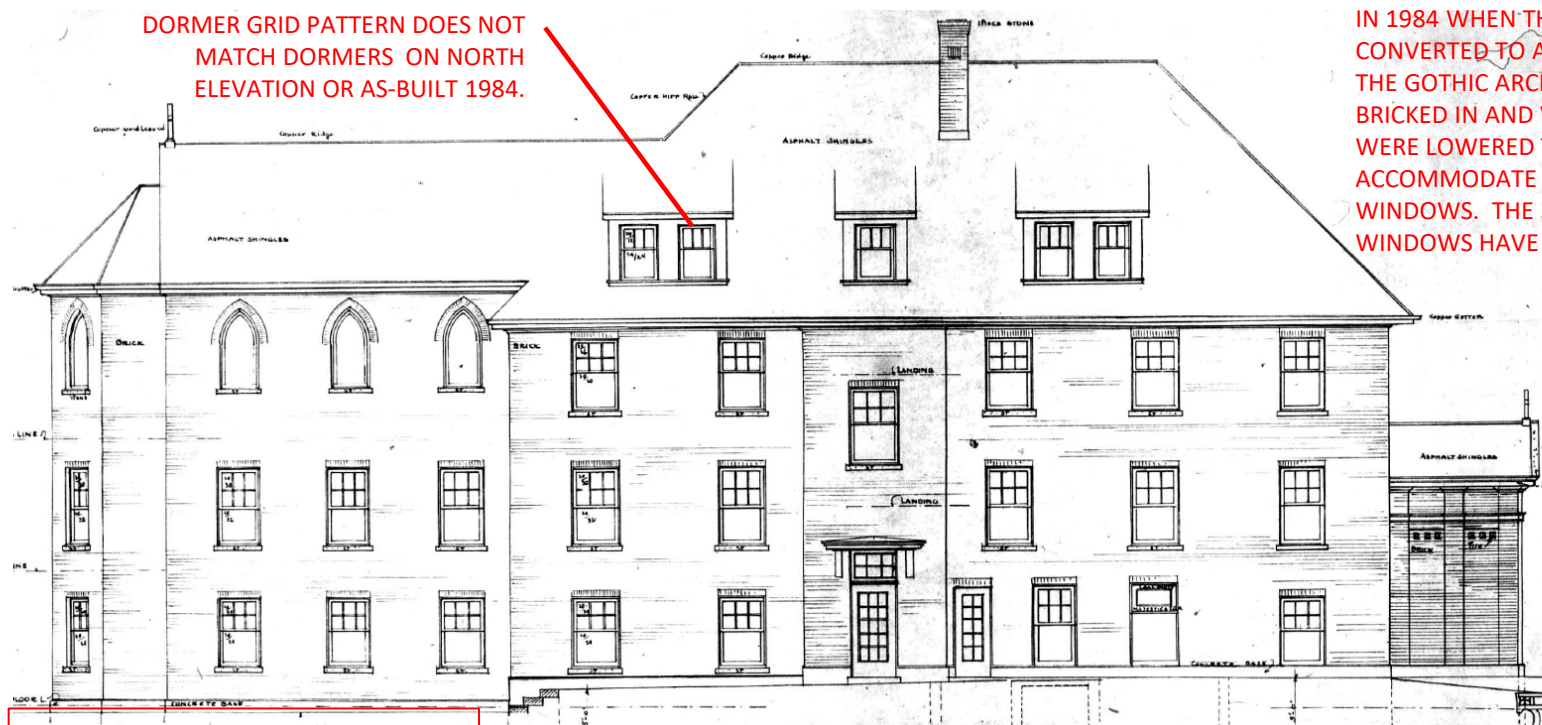


NEW 3RD FLOOR WINDOWS TO HONOR ORIGINAL CHAPEL WINDOWS AND UNIQUENESS OF THIS SPACE. NO SDLS.



tarantino
& COMPANY

REAR “EAST” ELEVATION AND PHOTOS



DORMER GRID PATTERN DOES NOT MATCH DORMERS ON NORTH ELEVATION OR AS-BUILT 1984.

NOTE: ALL 1ST FLOOR WINDOWS WERE INSTALLED WITH UNEQUAL 'COTTAGE STYLE' SASHES, WHILE THE 2ND AND 3RD FLOORS HAVE EQUAL SASHES

1922 CONVENT DRAWINGS

IN 1984 WHEN THE CHAPEL WAS CONVERTED TO A DWELLING UNIT, THE GOTHIC ARCHES WERE BRICKED IN AND WINDOW SILLS WERE LOWERED TO ACCOMMODATE OPERABLE WINDOWS. THE 3RD FLOOR WINDOWS HAVE NO GRILLES.



DORMER WINDOWS, INSTALLED IN 1922, HAVE DISPROPORTIONATE PATTERN AND GLASS SHAPE

NO GRILLES

WINDOW WAS BRICKED OVER IN 1984 TO CREATE A COMMUNITY LAUNDRY ROOM AND DWELLING PARTY WALL

1984 RENOVATION / ADDITION – AFFORDABLE HOUSING REFLECTS PRESENT DAY “AS-BUILT” CONDITIONS

NOTE: UNLESS SPECIFICALLY IDENTIFIED, ALL EXISTING WINDOWS TO BE REPLACED TO MATCH “LIKE FOR LIKE” EXISTING ORIGINAL WINDOWS; INCLUDING 1ST FLOOR COTTAGE STYLE SASHES

NEW 3RD FLOOR WINDOWS TO HONOR ORIGINAL CHAPEL WINDOWS AND UNIQUENESS OF THIS SPACE. NO SDLs.



RETURN DORMER WINDOWS TO ORIGINAL 1922 DESIGN INTENT WITH 2 VERTICAL SDLs / NO HORIZONTAL SDL, WHICH WILL MAINTAIN PATTERN PROPORTIONS

PROPOSED 2023 NEW WINDOW SCOPE

MATCH SDLs, TYP AND COTTAGE SASH



tarantino
& COMPANY

EAST BRADY STREET HISTORIC DISTRICT
#105983 ST. HEDWIG CONVENT
REGISTERED 1990

SIDE “NORTH” ELEVATION



PROPOSED 2023 NEW WINDOW SCOPE

NOTE: UNLESS SPECIFICALLY IDENTIFIED, ALL EXISTING WINDOWS TO BE REPLACED TO MATCH "LIKE FOR LIKE" EXISTING ORIGINAL WINDOWS; INCLUDING 1ST FLOOR COTTAGE STYLE SASHES

NEW 3RD FLOOR WINDOWS TO HONOR ORIGINAL CHAPEL WINDOWS AND UNIQUENESS OF THIS SPACE. NO SDLs.



RETURN DORMER WINDOWS TO ORIGINAL 1922 DESIGN INTENT WITH 2 VERTICAL SDLs / NO HORIZONTAL SDL, WHICH WILL MAINTAIN PATTERN PROPORTIONS

MATCH SDLs, TYP AND COTTAGE SASH



tarantino
 & COMPANY

EAST BRADY STREET HISTORIC DISTRICT
 #105983 ST. HEDWIG CONVENT
 REGISTERED 1990

SIDE "NORTH" ELEVATION
 AND PHOTOS



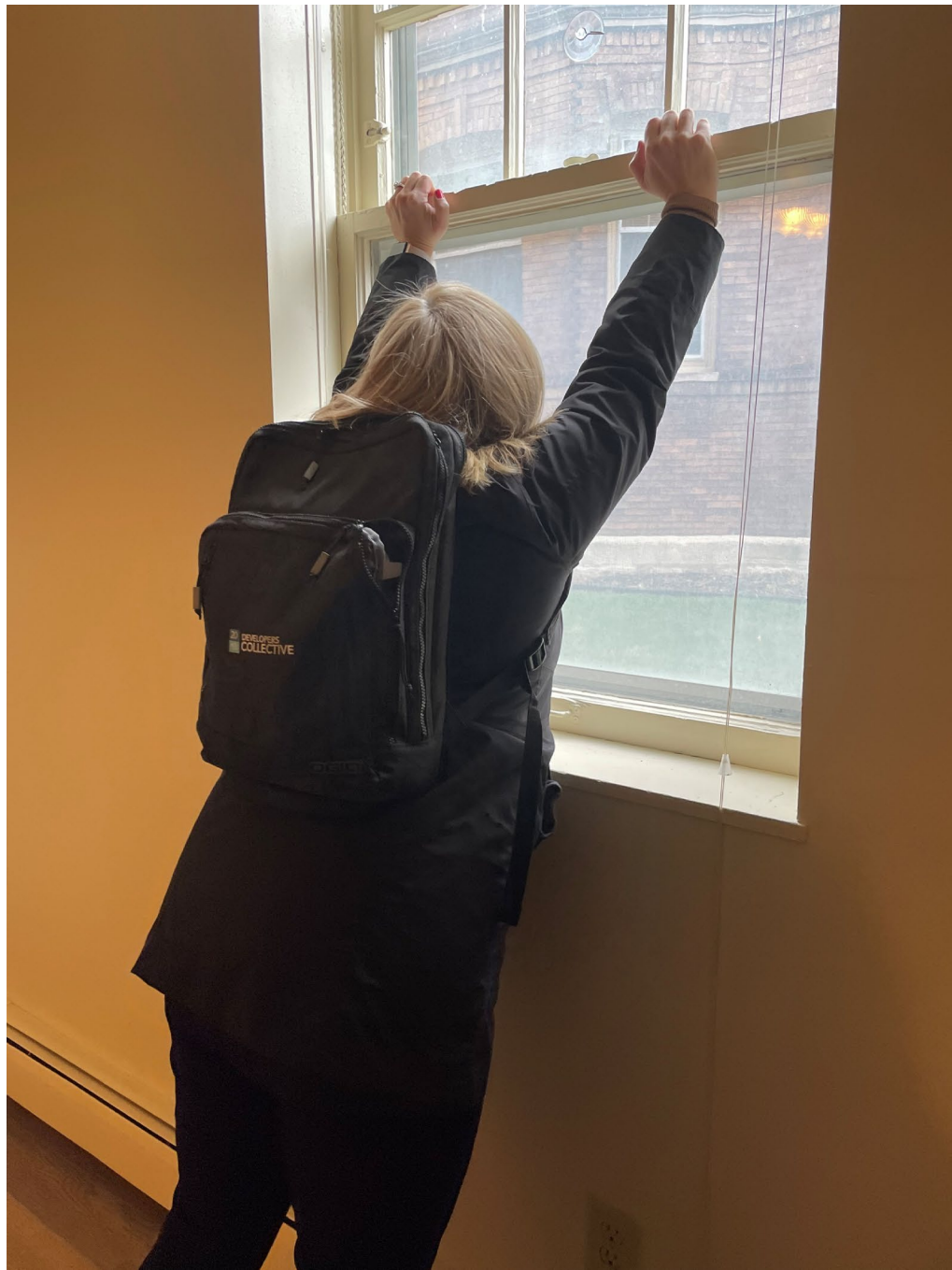
Storm windows are outfitted on all windows to temper the heat transfer with the single-pane glass windows. Despite this, the draft through the windows is extremely uncomfortable for the senior aged residents. The property manager uses painter's tape to seal all the window joints. This particular tenant used plastic bags to create an additional weather barrier.

The windows do not operate well – the weights and balances are off. Some windows have severed ropes making it unsafe to be opened. The property has continued to invest capital in fixing the ropes, chains , but it has become time intense to manage this ongoing problem. From the exterior, window frames are rotting and some windows have dropped over 2” in their frame.

It is difficult for residents to operate the windows with the weight system, with summer swell, and to obtain fresh air.

It is a fire and life safety concern to residents that are unable to operate windows during an emergency.

The biggest complaint (and usually only complaint) is related to all the forementioned items.



Window latch is released. Trying to force window open but unsuccessful.

Windows frequently swell with humidity in the summer or painting seals the sash.



The property manager uses a putty knife to loosen the joints to improve the operation. She was unsuccessful with this window so she will need to contact the maintenance man from another property.

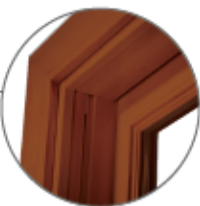


WEATHER SHIELD.
WINDOWS & DOORS

PREMIUM SERIES
All Wood Windows and Doors

DOUBLE HUNG WINDOWS

Weather Shield’s all-wood double hung windows offer ultimate aesthetic flexibility, as they can be made from a variety of wood species to create warmth and classic elegance. Sash tilt in or can be removed for easy cleaning.



A wood jamb liner covers all mechanical balance systems to create a tailored aesthetic.




The single dual action lock allows the sash to be unlocked and tilted easily with one hand. Tilt release latches are concealed leaving the sash clear of visible latches.




The Symmetry Balance System is nestled just inside the sub-frame and hidden from view, this uniquely engineered constant force balance system is constructed with flat stainless steel coil that is paired with a casing made from corrosion resistant materials.


Available Double Hung Shapes




RECTANGULAR



EYEBROW



HALF CIRCLE



QUARTER EYEBROW

weathershield.com

PREMIUM SERIES
Double Hung Windows

WEATHER SHIELD.
WINDOWS & DOORS

Exterior Wood Species



PINE



MIXED GRAIN FIR



MAHOGANY



PRIMED PINE (STANDARD)

Interior Wood Species



PINE (STANDARD)



OAK



MAPLE



VERTICAL GRAIN FIR



MIXED GRAIN FIR



MAHOGANY



ALDER (CHARACTER)



CHERRY

Interior Factory Finishes



CLEAR SATIN



CHESTNUT



FRUITWOOD



GOLDEN OAK



RICH MAHOGANY



PREFINISHED BLACK (LATEX)



PREFINISHED WHITE (LATEX)



BLACK POLY PAINT



WHITE POLY PAINT

Finishes and colors shown may not be actual representations. Please visit authorized Weather Shield dealer for color samples.


Designer Stains

Explore our furniture-grade stain offering created in partnership with leading paint and coatings manufacturer, Sherwin-Williams®. These new stains provide clean, vivid colors with high pigmentation for excellent clarity and uniformity


PROUDLY FINISHED WITH
SHERWIN-WILLIAMS.



HARVEST WHEAT




CARAMEL



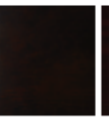
EMBER




ACORN



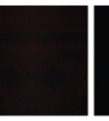
MERLOT




THATCH BROWN




CHOCOLATE



RICH COFFEE

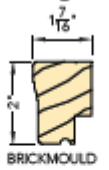


EBONY




GREYSTONE


Casing Profiles



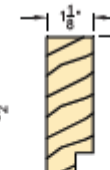
BRICKMOULD



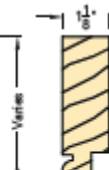
BALTIMORE BULLNOSE



MID-ATLANTIC CASING

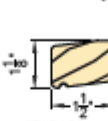


FLAT CASING

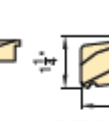


BEADED CASING


Sillnose Options



STANDARD SILLNOSE



EXTENDED SILLNOSE



NEW ENGLAND SILL

Hardware Finishes



WHITE



TAN



BRUSHED NICKEL



BRIGHT BRASS*



RUSTIC BRONZE



BLACK



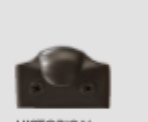
CONTEMPORARY SASH LOCK



CONTEMPORARY LIFT HANDLE



HISTORICAL SASH LOCK



HISTORICAL FINGER LIFT



HISTORICAL PULL

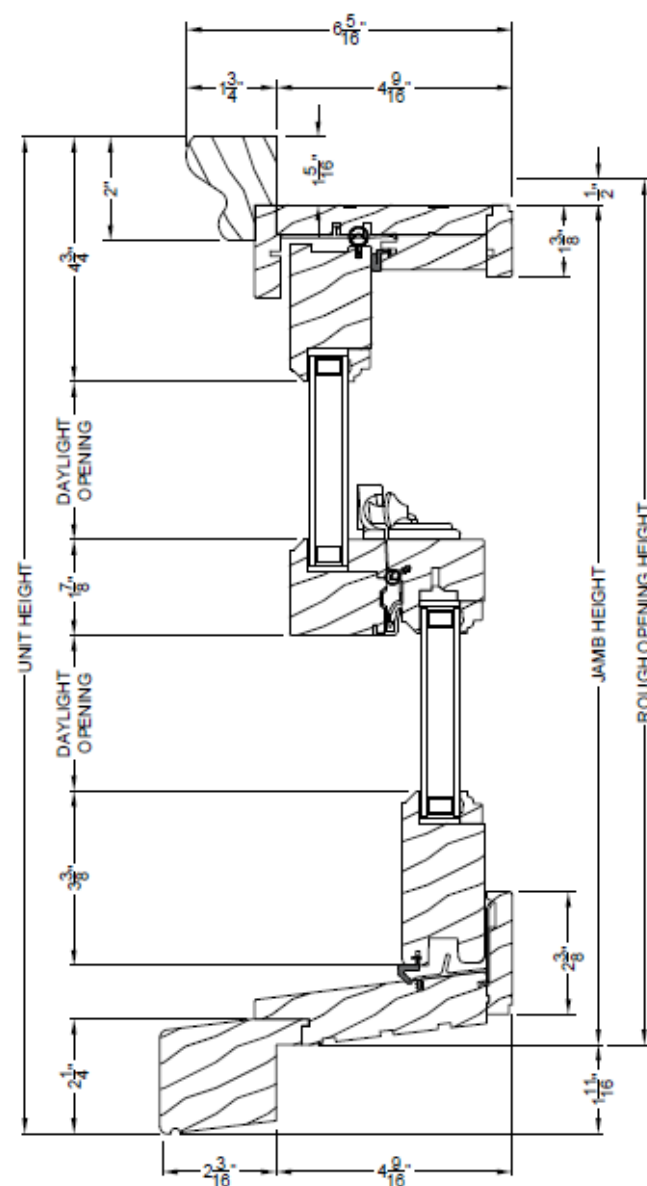
* Not available on Historical Sash Lock



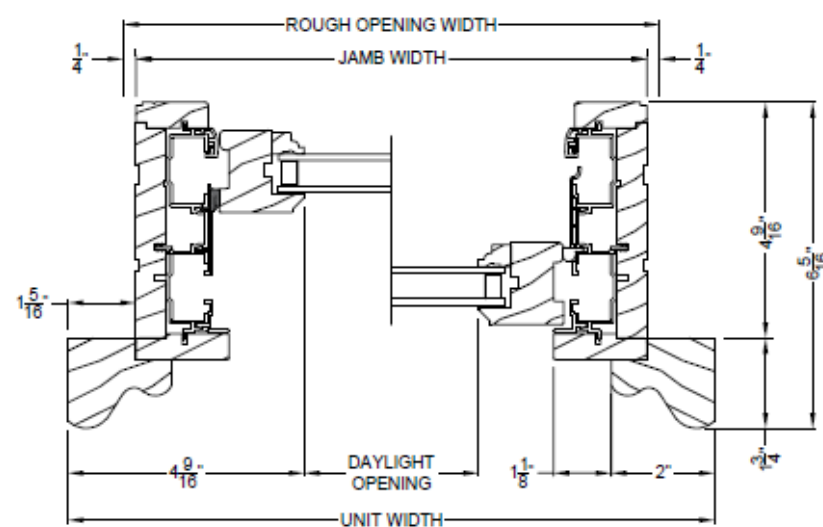
tarantino
& COMPANY

EAST BRADY STREET HISTORIC DISTRICT
#105983 ST. HEDWIG CONVENT
REGISTERED 1990

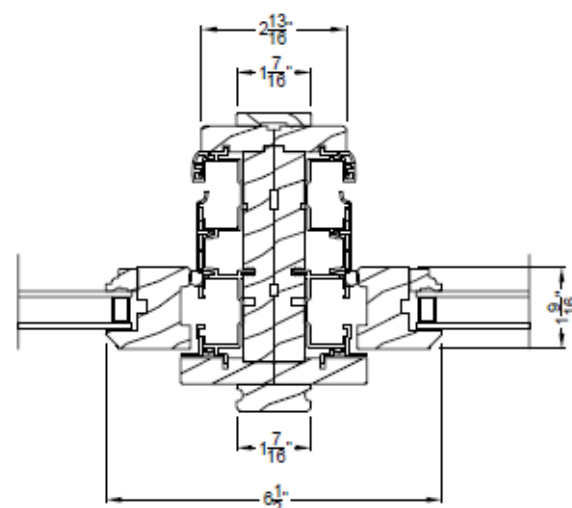
NEW WINDOW SPECIFICATIONS
AND DETAILS



PREMIUM WOOD DOUBLE HUNG WINDOW (6120)
Vertical Section



PREMIUM WOOD DOUBLE HUNG WINDOW (6120)
Horizontal Section



PREMIUM WOOD DOUBLE HUNG WINDOW
Vertical Mull Section - DH / DH



EXAMPLE
IMAGE

The internal bars are available in black, if requested by the Historic Preservation Commission.