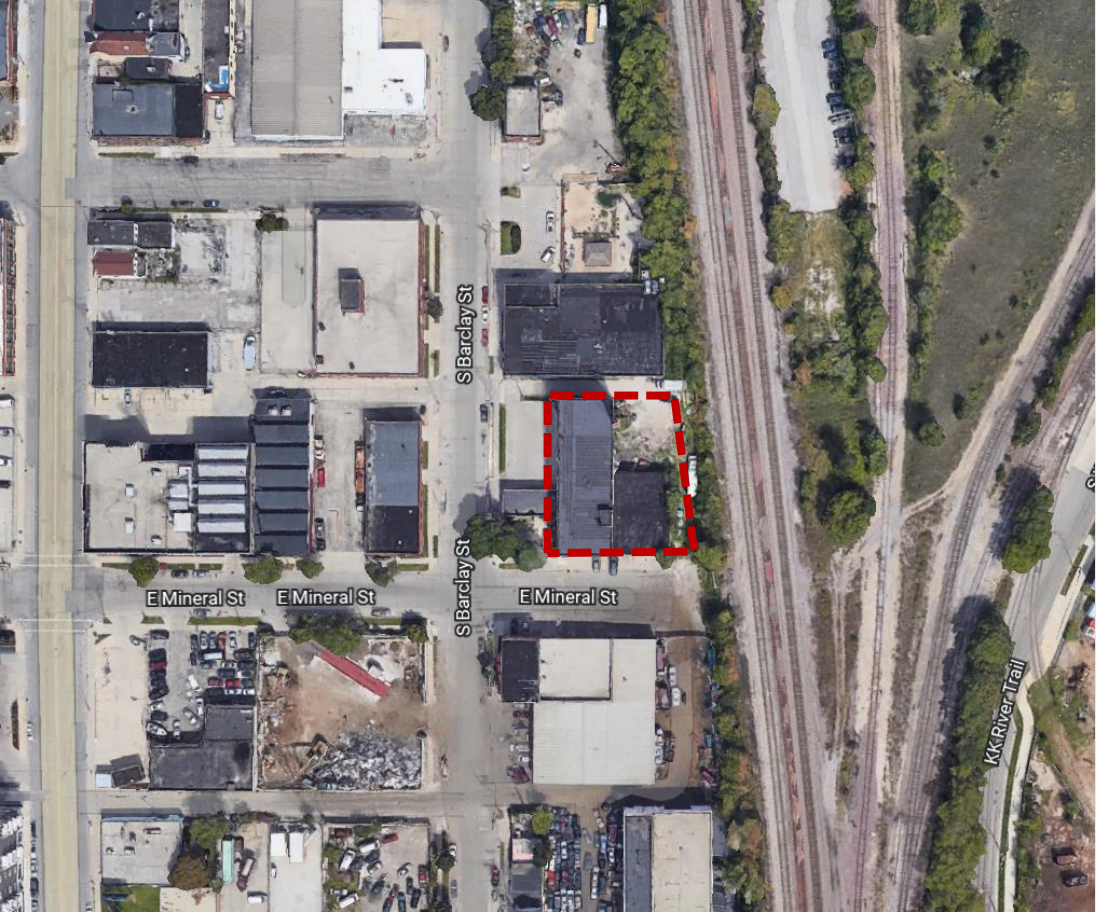


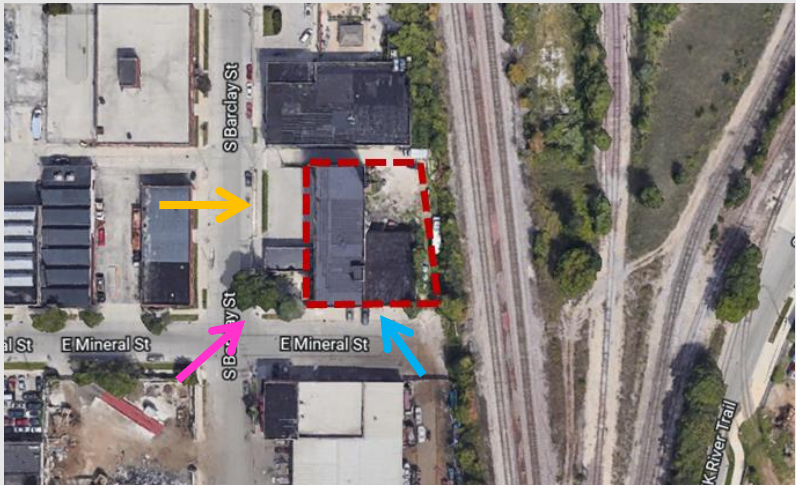
File No. 220876. A substitute ordinance relating to the change in zoning from Industrial Heavy, IH, to Industrial Commercial, IC, to allow a broader mix of uses on the property located at 212 East Mineral Street, on the north side of East Mineral Street, east of South Barclay Street, in the 12th Aldermanic District.



File No. 220876. Site context.



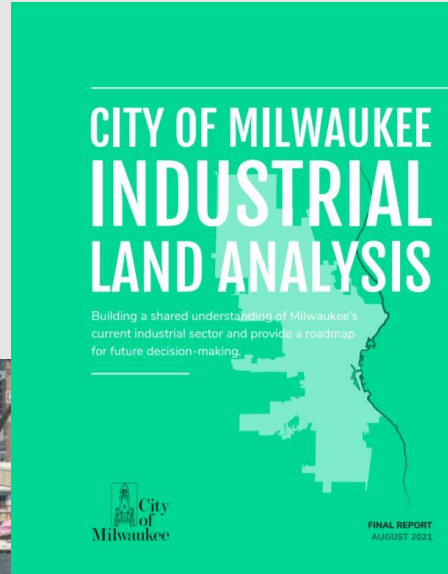
View from S Barclay St looking east



View from E Mineral St looking northeast



View from E Mineral St looking northwest



Harbor District Water and Land Use Plan:

- Recommends that the Barclay Street corridor be maintained “... as a light industrial and “maker” corridor, providing employment and innovation opportunities with flexible building forms that can adapt to a variety of businesses.”

Industrial Land Analysis

- Recommends “prioritizing space for manufacturers within the Barclay Street maker corridor, including considering this area for zoning as a MaKE Zone”

The proposed rezoning from IH to IC is consistent with the recommendations of the Comprehensive Plan.

