

2022-10-20

# 221020 - MCTS Bus Stops Milwaukee October 2022

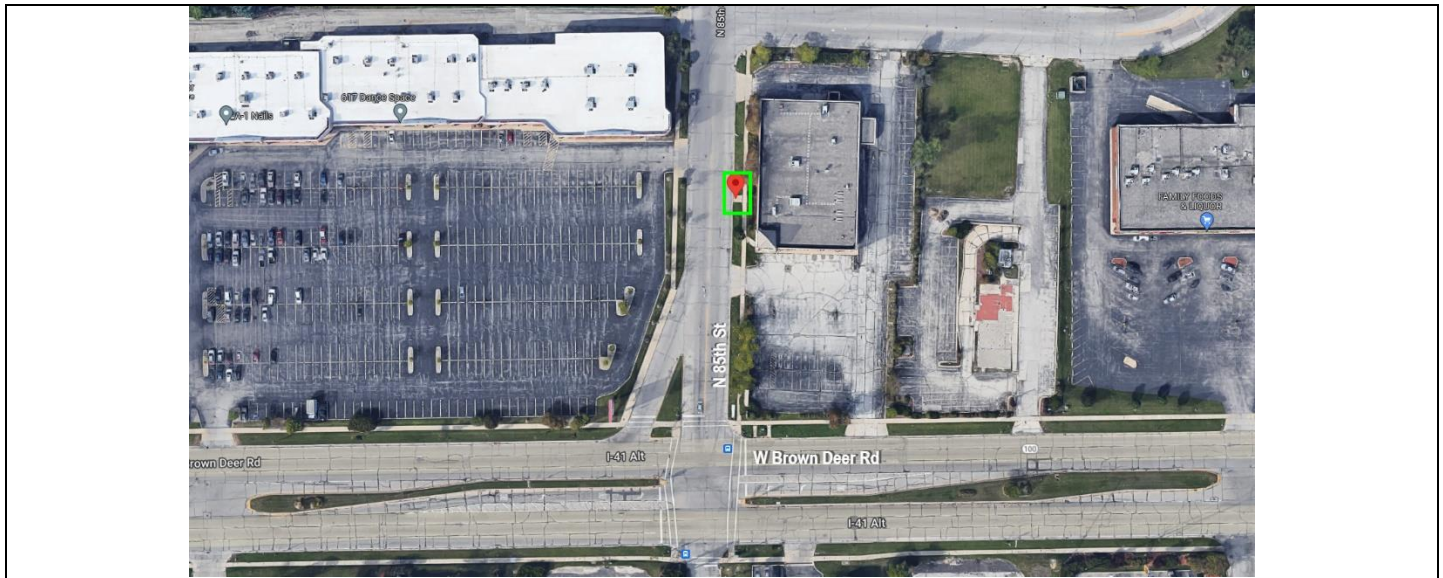
[DOCUMENT SUBTITLE]

Recommended by the Transit Stop Technical Advisory Committee



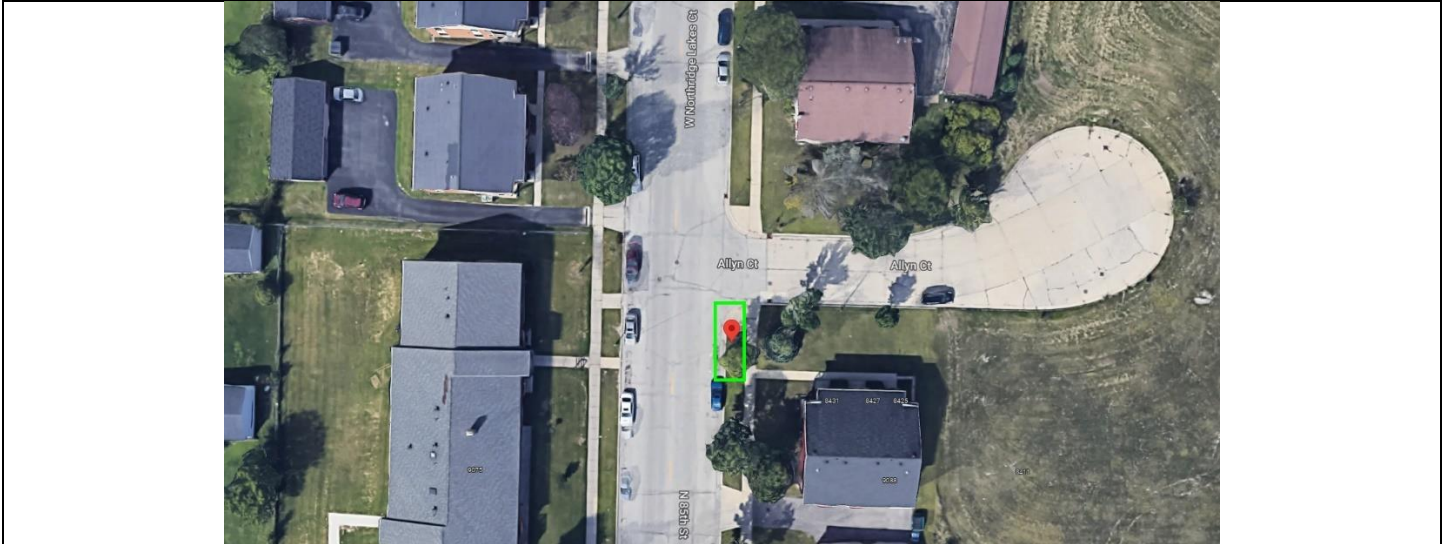
**Jesus Ochoa**  
**Planning Manager**  
**414-344-4550**  
[jochoa@mcts.org](mailto:jochoa@mcts.org)

Bus Stop ID #1577	N85 & 8488 N #1577 (43.178693, -88.015647)
-------------------	--



Route(s)	Route 88
Reason for New Location	Provides access to 85 <sup>th</sup> Street due to routing change. Would be a new stop added at the location of a former Route 76 stop to serve 85 <sup>th</sup> & Good Hope.
Distance from previous stop	0.3 miles, EB Good Hope & W8787 #6796
Distance to following stop	0.3 miles, EB N85 & Allyn #9683
Parking Impacts	Requires 120 ft NO PARKING BUS STOP
Mobility/Accessibility	Sidewalk access available w/ pads. Crosswalk and traffic signals nearby.
Pedestrian Safety	Sidewalk, crosswalk, traffic signals
County Supervisor	Dist. 18 - Deanna Alexander
City Alderperson	Dist. 9 - Vacant

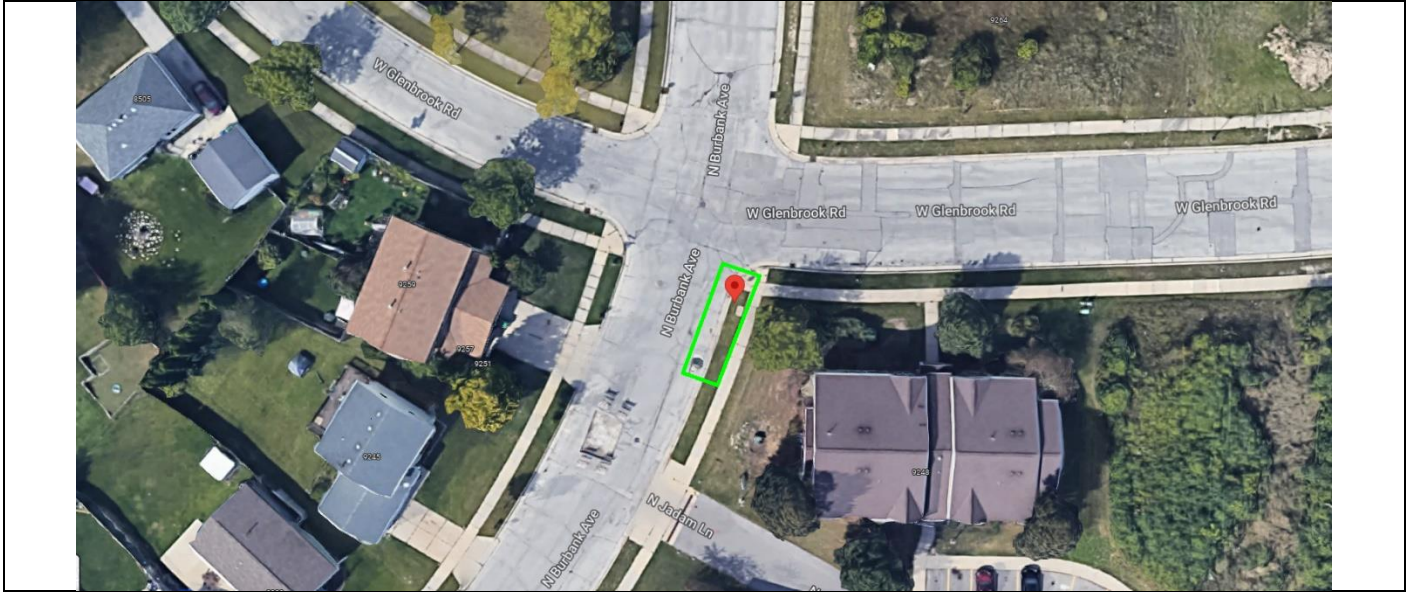
Bus Stop ID #9683 | N85 & Allyn #9683 (43.182918, -88.015501)



Route(s)	Route 88
Reason for New Location	Adding stops to service to Westridge Apartments at the request of community members. Would be a new stop meant to serve the surrounding multi-family developments in the area. (#9683).
Distance from previous stop	0.3 miles, EB N85 & 8488 N #1577
Distance to following stop	0.25 miles, EB Burbank & Glenbrook #9684
Parking Impacts	Requires 80 ft NO PARKING BUS STOP
Mobility/Accessibility	No current bus pad available.
Pedestrian Safety	Sidewalk
County Supervisor	Dist. 18 - Deanna Alexander
City Alderperson	Dist. 9 - Vacant



Bus Stop ID #9684    Burbank & Glenbrook #9684 (43.185873, -88.014745)



Route(s)	Route 88
Reason for New Location	Provides access to residents along the corridor. Would be a new stop meant to serve the surrounding single and multi-family developments in the area.
Distance from previous stop	0.25 miles, EB N85 & Allyn #9683
Distance to following stop	0.3 miles, EB Glenbrook & Westridge
Parking Impacts	Requires 65 ft NO PARKING BUS STOP (driveway accounts for total of 80 ft)
Mobility/Accessibility	No current bus pad available.
Pedestrian Safety	Sidewalk
County Supervisor	Dist. 18 - Deanna Alexander
City Alderperson	Dist. 9 - Vacant

Bus Stop ID #9682	GLENBROOK & WESTRIDGE #9682 (43.18852660360275, -88.00858766655433)
-------------------	---



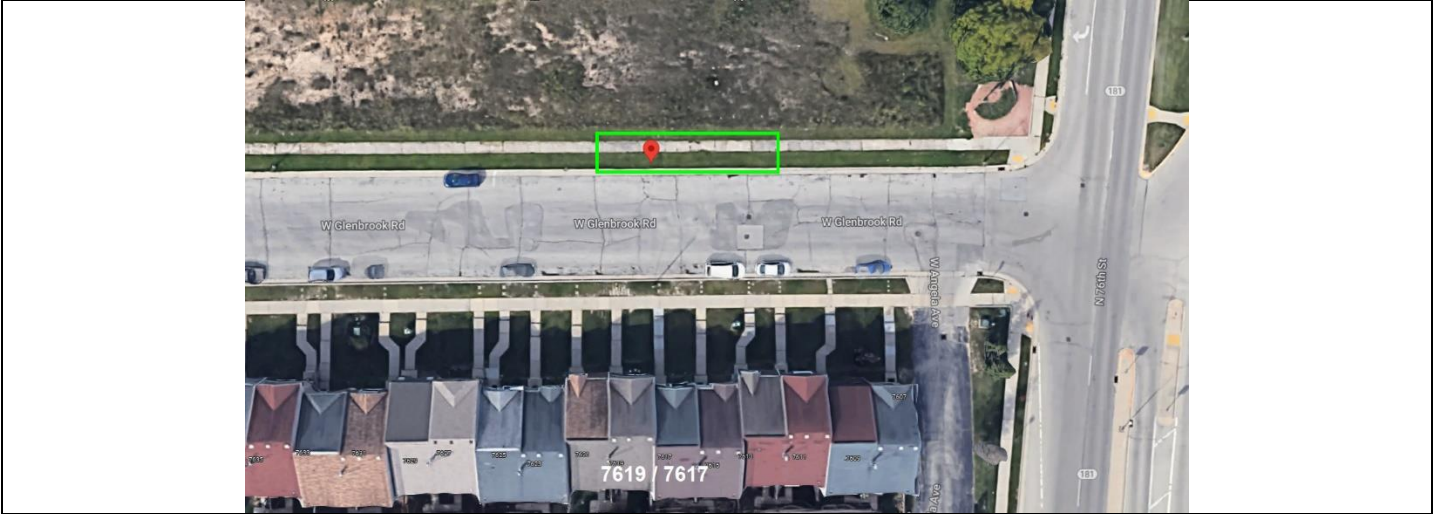
Route(s)	Route 88
Reason for New Location	Adding a new stop on the newly modified Route 88(EB) to provide access to seniors at Westridge Apartments at the request of residents.
Distance from previous stop	0.4 miles, EB BURBANK & GLENBROOK (NEARSIDE) #9684
Distance to following stop	0.2 miles, EB GLENBROOK & 76TH (MIDBLOCK) #9685
Parking Impacts	Requires 80 ft NO PARKING BUS STOP
Mobility/Accessibility	No current bus pad available.
Pedestrian Safety	Sidewalk
County Supervisor	Dist. 18 - Deanna Alexander
City Alderperson	Dist. 9 - Vacant



Bus Stop ID #9685	GLENBROOK & N76 #9685 (43.189178, -88.004975)
-------------------	---



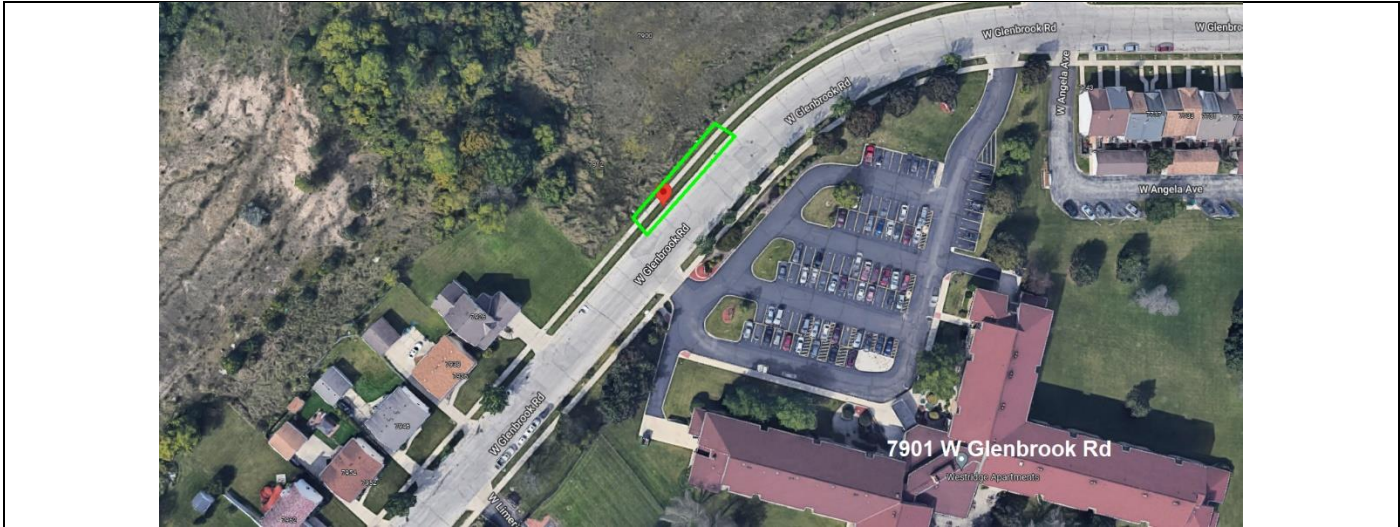
Route(s)	Route 88
Reason for New Location	Adding a new stop on the newly modified Route 88 Providing access to residents at the request of community members.
Distance from previous stop	0.2 miles, EB GLENBROOK & WESTRIDGE (MIDBLOCK) #9682
Distance to following stop	0.5 miles, EB 76TH & NORTHRIDGE MALL (NEARSIDE) #6800
Parking Impacts	Requires 120 ft NO PARKING BUS STOP
Mobility/Accessibility	No current bus pad available.
Pedestrian Safety	Sidewalk
County Supervisor	Dist. 18 - Deanna Alexander
City Alderperson	Dist. 9 - Vacant



Route(s)	Route 88
Reason for New Location	New Route 88 reconfiguration from customer requests. Provides access to residents along the corridor.
Distance from previous stop	1,806.48 ft, NB N76 & NORTHRIDGE LAKES (NEARSIDE) #2476
Distance to following stop	976.04 ft, WB GLENBROOK & WESTRIDGE (MIDBLOCK) #9678
Parking Impacts	Requires 120 ft NO PARKING BUS STOP
Mobility/Accessibility	No current bus pad available.
Pedestrian Safety	Sidewalk
County Supervisor	Dist. 18 - Deanna Alexander
City Alderperson	Dist. 9 - Vacant



Bus Stop ID #9678 | GLENBROOK & WESTRIDGE (MIDBLOCK) #9678 (43.188770457746564, -88.00850484091089)



Route(s)	Route 88
Reason for New Location	New Route 88 reconfiguration from customer requests. Provides access to seniors at Westridge Apartments.
Distance from previous stop	976.04 ft, GLENBROOK & N76 (MIDBLOCK) #9677
Distance to following stop	1,992 ft, SB GLENBROOK & BURBANK (NEARSIDE) #9686
Parking Impacts	Requires 120 ft NO PARKING BUS STOP
Mobility/Accessibility	No current bus pad available.
Pedestrian Safety	Sidewalk
County Supervisor	Dist. 18 - Deanna Alexander
City Alderperson	Dist. 9 - Vacant



Bus Stop ID #9686 GLENBROOK & BURBANK (NEAR SIDE) #9686 (43.18608048257829, -88.01404884698795)



Route(s)	Route 88
Reason for New Location	New Route 88 reconfiguration from customer requests. Provides access to residents along the corridor.
Distance from previous stop	1,992 ft, GLENBROOK & WESTRIDGE (MIDBLOCK) #9678
Distance to following stop	1,366 ft, N85 & ALLYN (MIDBLOCK) #9687
Parking Impacts	Requires 120 ft NO PARKING BUS STOP
Mobility/Accessibility	No current bus pad available.
Pedestrian Safety	Sidewalk
County Supervisor	Dist. 18 - Deanna Alexander
City Alderperson	Dist. 9 - Vacant

Bus Stop ID #9687 | N85 & ALLYN (MIDBLOCK) #9687 (43.18300214129874, -88.0156937275291)



Route(s)	Route 88
Reason for New Location	New Route 88 reconfiguration from customer requests. Provides access to residents along the corridor.
Distance from previous stop	1,366 ft, GLENBROOK & BURBANK (NEARSIDE) #9686
Distance to following stop	1,859 ft, SB N85 & BROWN DEER (NEARSIDE) #8387
Parking Impacts	Requires 120 ft NO PARKING BUS STOP
Mobility/Accessibility	Carriage walk serves as front door bus stop pad – meets 5' x 8' ADA dimensions.
Pedestrian Safety	Sidewalk
County Supervisor	Dist. 18 - Deanna Alexander
City Alderperson	Dist. 9 - Vacant



Bus Stop ID #8387 | N85 & BROWN DEER (NEARSIDE) #8387 (43.17805961736738, -88.01606690745541)



Route(s)	Route 88
Reason for New Location	New Route 88 reconfiguration from customer requests. Provides access to commercial activity along the corridor. This stop would be a former Route 76 stop in the slip lane.
Distance from previous stop	1,859 ft, SB N85 & ALLYN (MIDBLOCK) #9687
Distance to following stop	1,057.58 ft, WB BROWN DEER & W8766 (NEARSIDE) #6798
Parking Impacts	Currently signed NO PARKING ANYTIME, right turn slip lane
Mobility/Accessibility	Boarding pad exists. Connects to sidewalk.
Pedestrian Safety	Sidewalk, Crosswalk, Traffic Signals
County Supervisor	Dist. 18 - Deanna Alexander
City Alderperson	Dist. 9 - Vacant