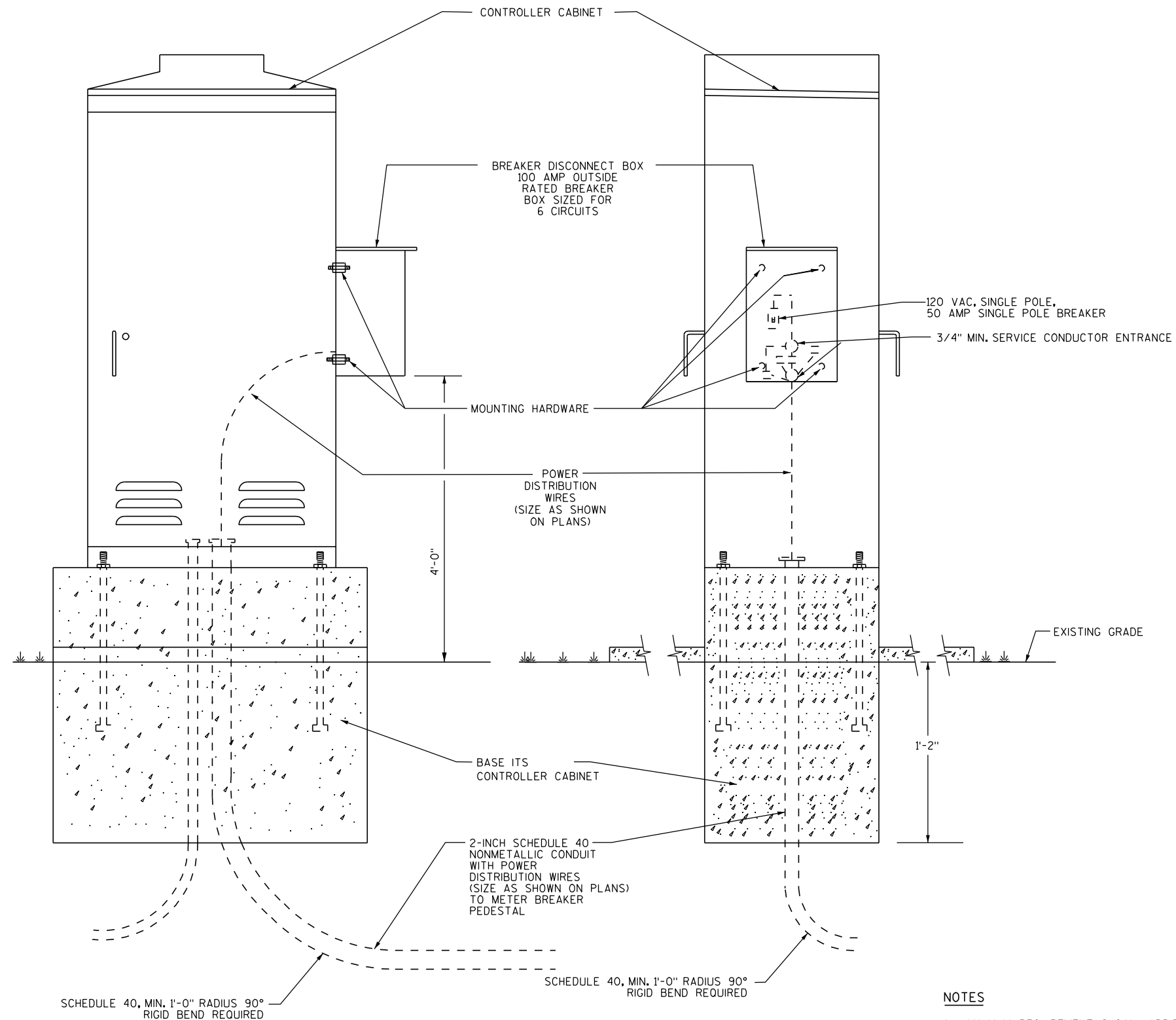


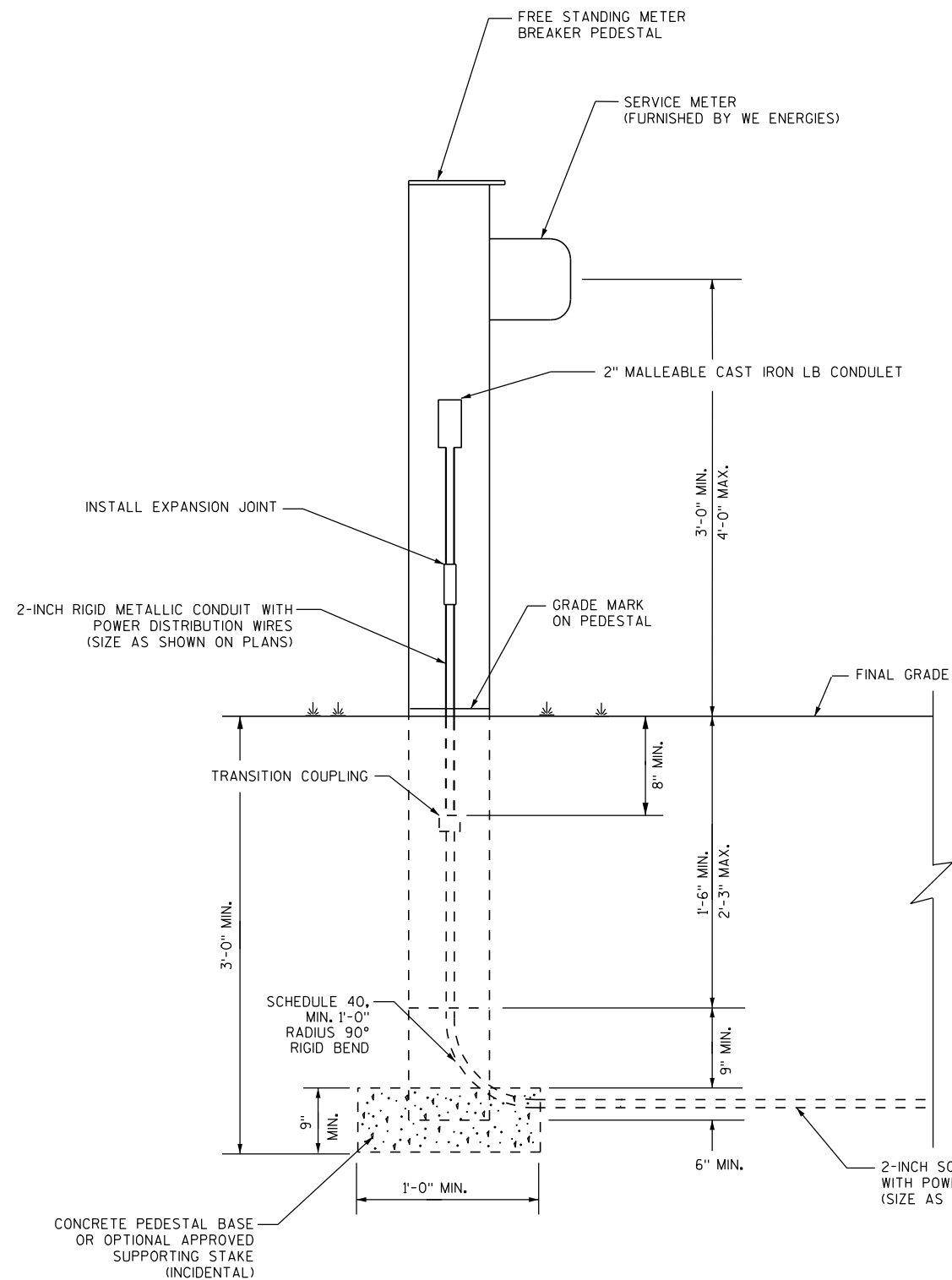


- 1) DETAILS OF CONSTRUCTION, MATERIALS AND WORKMANSHIP NOT SHOWN ON THIS DRAWING SHALL CONFORM TO THE PERTINENT REQUIREMENTS OF THE CONTRACT.
- 2) WHEN REQUIRED TO CONNECT NONMETALLIC CONDUIT TO METALLIC CONDUIT, ONLY ADAPTER FITTINGS, U.L. LISTED FOR ELECTRICAL USE, SHALL BE USED.
- 3) CONDUIT HEIGHT ABOVE THE CONCRETE BASE SHALL BE 3-INCHES.
- 4) DEPTH OF CONDUIT SHALL BE 24-INCHES MINIMUM AND 36-INCHES MAXIMUM.
- 5) ANY EXCEPTION TO THE MAXIMUM DEPTH SHALL BE ONLY WITH THE WRITTEN APPROVAL OF THE ENGINEER.
- 6) CONTROLLER CABINET BASE TOP SURFACES SHALL BE TROWEL FINISHED AND LEVEL, PRIOR TO CABINET INSTALLATION. LEVELING OF TOP SURFACES AFTER CONCRETE BASE HAS CURED SHALL ONLY BE ACCOMPLISHED BY GRINDING.
- 7) MAINTENANCE PLATFORMS ARE NOT REQUIRED WHEN THE SURROUNDING AREA IS PAVED.
- 8) MINIMUM BENDING RADIUS OF CONDUIT = 6 X THE DIAMETER.
- 9) ALL METALLIC CONDUIT ENDS SHALL BE REAMED AND THREADED.
- 10) CAP ALL BELOW GRADE METALLIC CONDUIT ENDS IN WHICH WIRE OR CABLE IS NOT BEING INSTALLED.
- 11) PLUG ALL BELOW GRADE NONMETALLIC CONDUIT ENDS IN WHICH WIRE OR CABLE IS NOT BEING INSTALLED.
- 12) ALL CONDUIT ENDS AT THE TOP OF CONCRETE BASES SHALL BE CAPPED IF METALLIC OR PLUGGED IF NONMETALLIC, IMMEDIATELY AFTER PLACEMENT AND BEFORE CONCRETE IS PLACED. CONDUITS IN WHICH WIRE OR CABLE IS NOT BEING INSTALLED SHALL REMAIN CAPPED OR PLUGGED.
- 13) CONCRETE FORM DEPTH BELOW FINISHED GRADE SHALL BE 6-INCH MAXIMUM. CONCRETE FORMS SHALL BE REMOVED AFTER CONCRETE HAS SET.
- 14) ALL METALLIC CONDUIT ENDS AT TOP OF CONCRETE BASES SHALL HAVE BUSHINGS IF WIRE IS INSTALLED.
- 15) ALL NONMETALLIC CONDUIT ENDS AT TOP OF CONCRETE BASES SHALL HAVE END BELLS IF WIRE IS INSTALLED.
- 16) ANCHOR BOLTS TO ANCHOR THE FIELD CABINET TO THE CABINET BASE WILL BE STATE FURNISHED WITH THE FIELD CABINET.
- 17) CONFIRM BOLT PATTERN OF CABINET PRIOR TO CONSTRUCTION OF CONCRETE BASE.

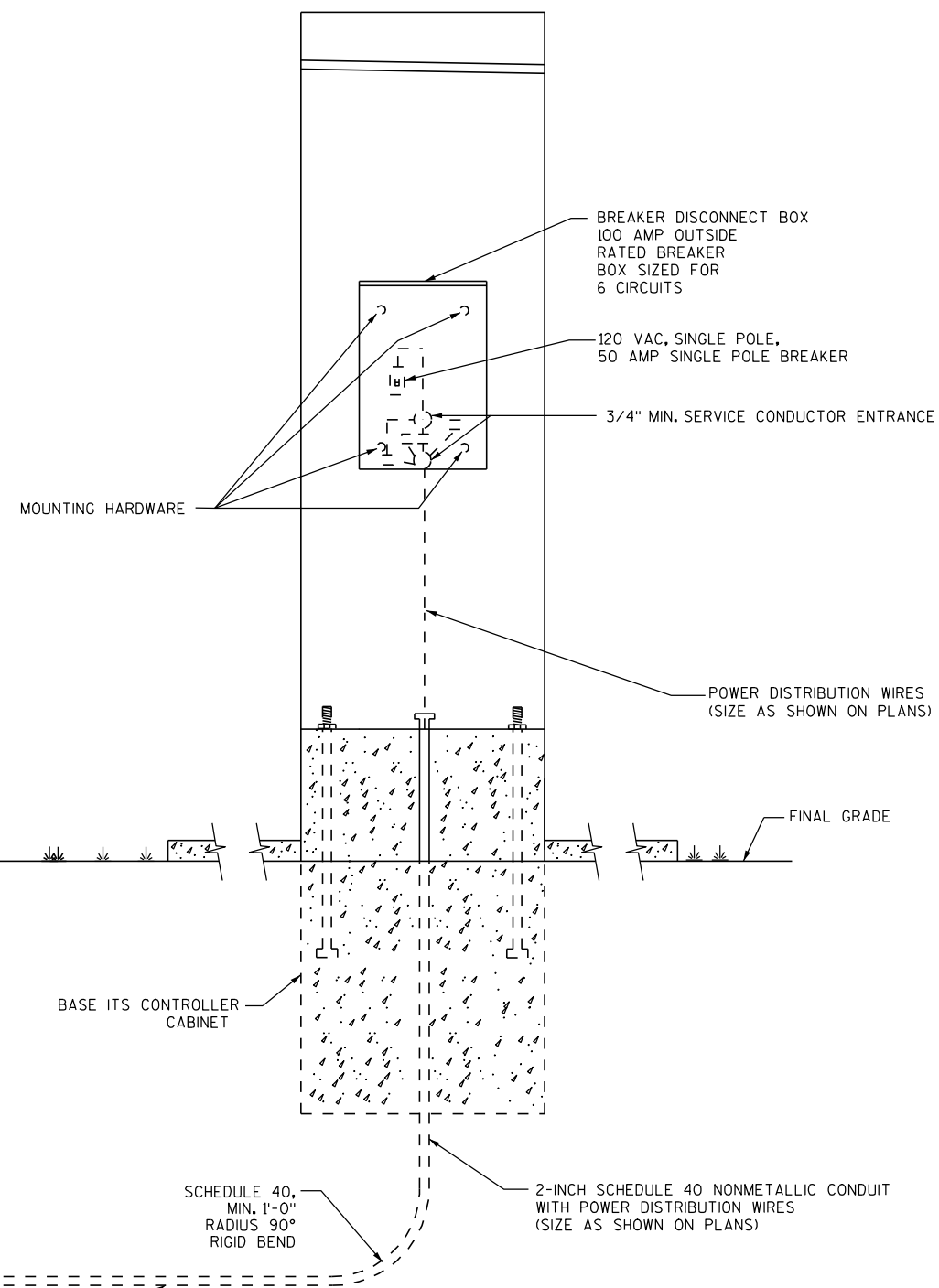
**NOTES**

- 1) MINIMUM REQUIREMENT SHOWN. ADDITIONAL BREAKERS MAY BE REQUIRED.
- 2) UP TO THREE BREAKERS WILL BE CONSIDERED INCIDENTAL TO THE ITEM BREAKER DISCONNECT BOX.

CABINET BREAKER DISCONNECT BOX INSTALLATION

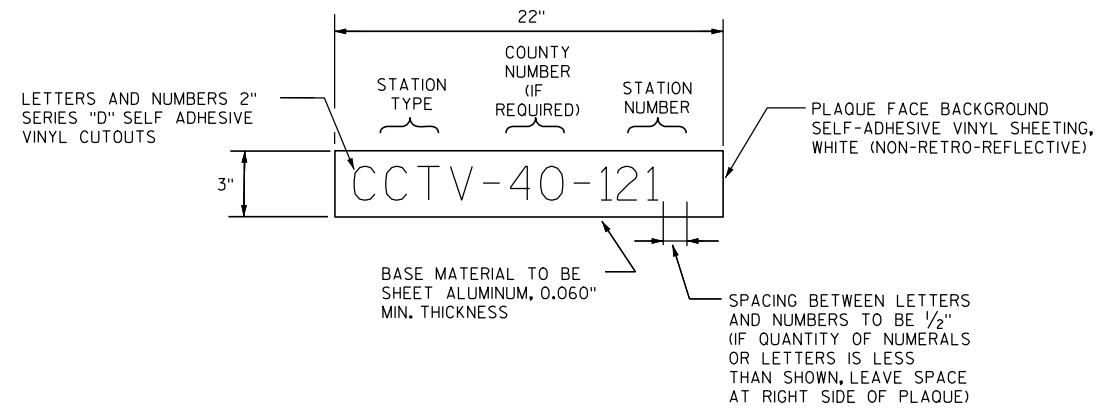


2 CIRCUIT ELECTRICAL SERVICE METER BREAKER PEDESTAL



NOTES

- 1) MINIMUM REQUIREMENT SHOWN. ADDITIONAL BREAKERS MAY BE REQUIRED.
- 2) UP TO THREE BREAKERS WILL BE CONSIDERED INCIDENTAL TO THE ITEM BREAKER DISCONNECT BOX.



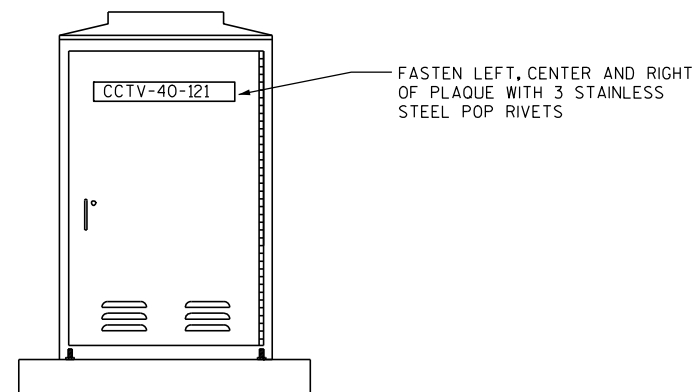
CONTROL CABINET IDENTIFICATION PLAQUE DETAIL

LEGEND STATION TYPE

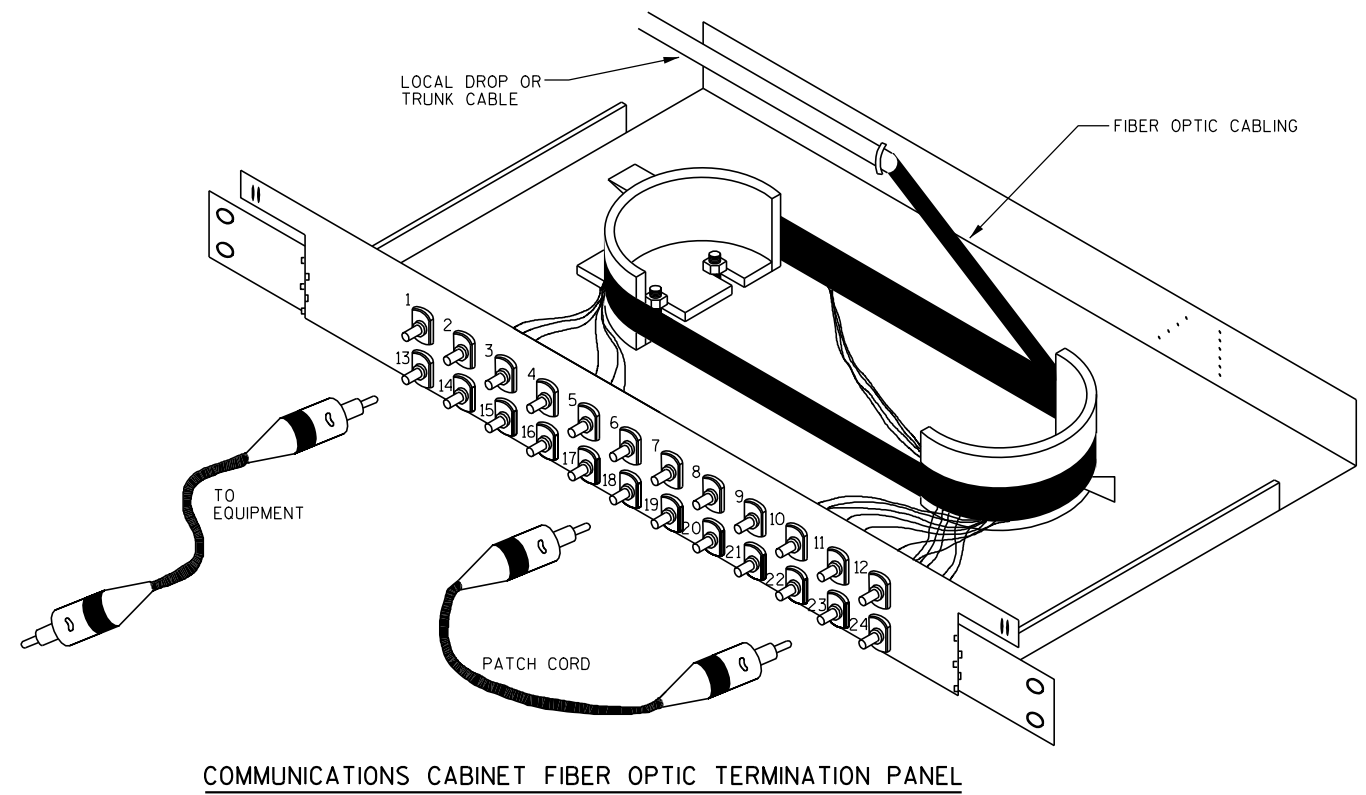
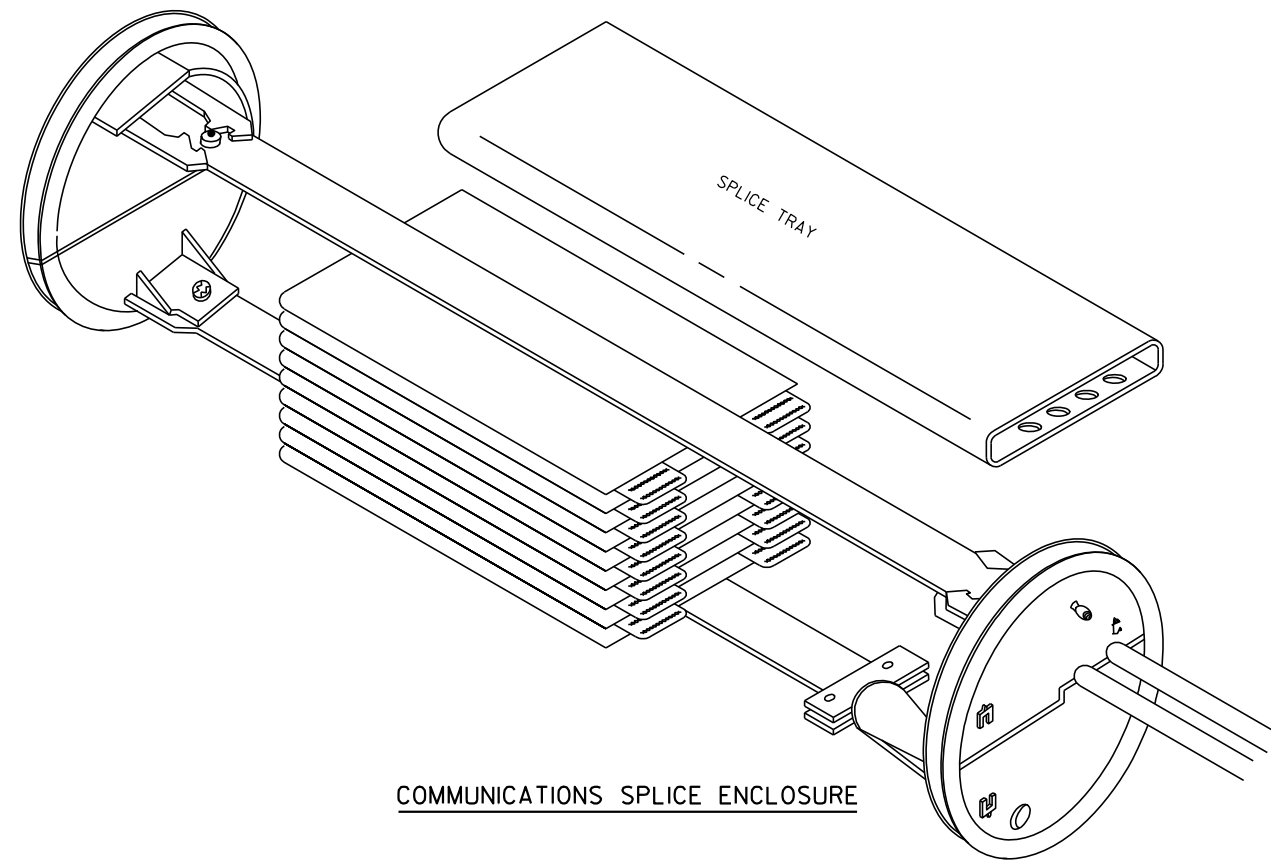
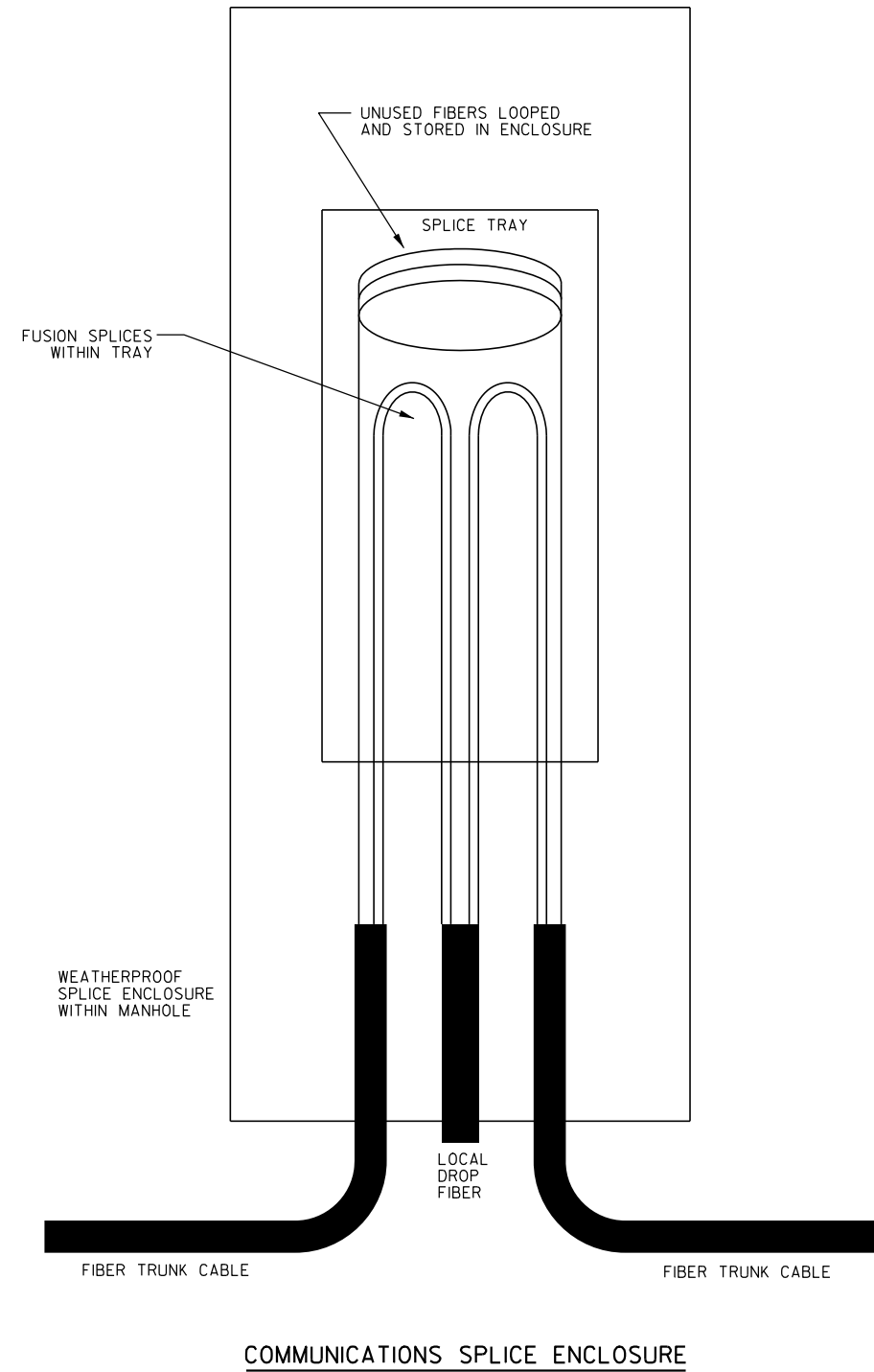
- CCTV - CLOSED CIRCUIT TELEVISION
- AVMS - ARTERIAL VARIABLE MESSAGE SIGN
- RM - RAMP METER
- MD- MICROWAVE DETECTOR

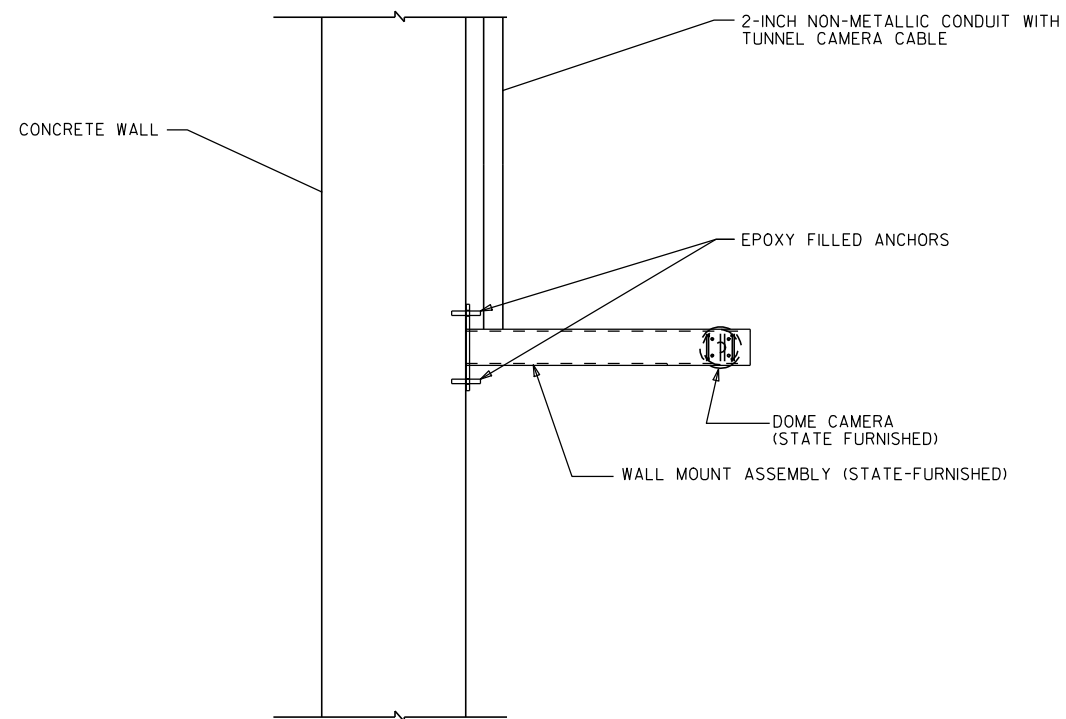
NOTES

- 1) TWO PLAQUES PER CABINET REQUIRED.
- 2) FASTEN ONE PLAQUE ON FRONT DOOR, UPPER HALF.
- 3) FASTEN ONE PLAQUE ON SIDE FACING LOCAL STREET. IF NO LOCAL STREET NEARBY, OR IF SUCH LOCATION COINCIDES WITH LOCATION OF PLAQUE IN NOTE 2, FASTEN PLAQUE ON REAR OF CABINET, UPPER HALF.
- 4) COUNTY NUMBER NOT REQUIRED ON RAMP METER CABINETS.



CONTROL CABINET IDENTIFICATION PLAQUE REQUIREMENTS AND PLACEMENTS (TYPICAL ALL CONTROL CABINETS)

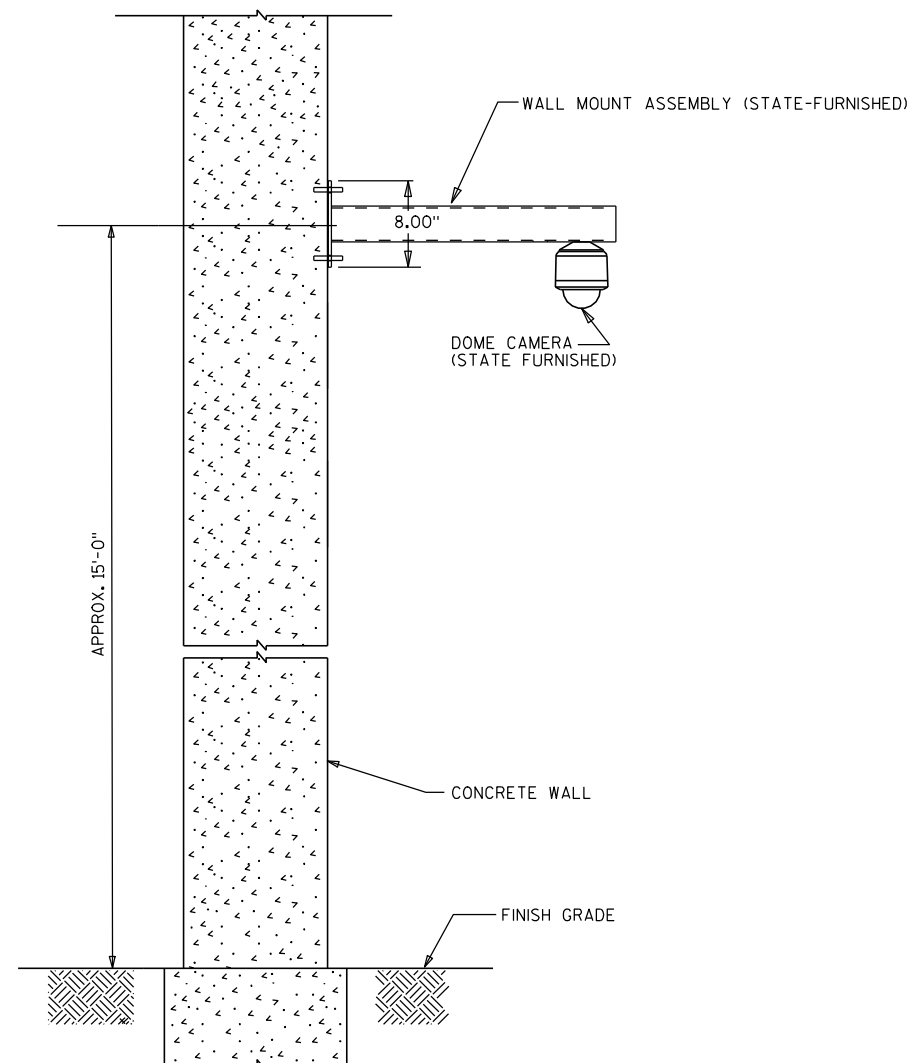




PLAN VIEW (WALL)

NOTES

- 1) ALL FASTENERS SHALL BE STAINLESS STEEL
- 2) BE RESPONSIBLE FOR CONFIRMING DIMENSIONS BETWEEN CAMERA AND FINISH GRADE PRIOR TO CONSTRUCTION.



KILBOURN AVE. TUNNEL WALL WITH DOME CAMERA

