

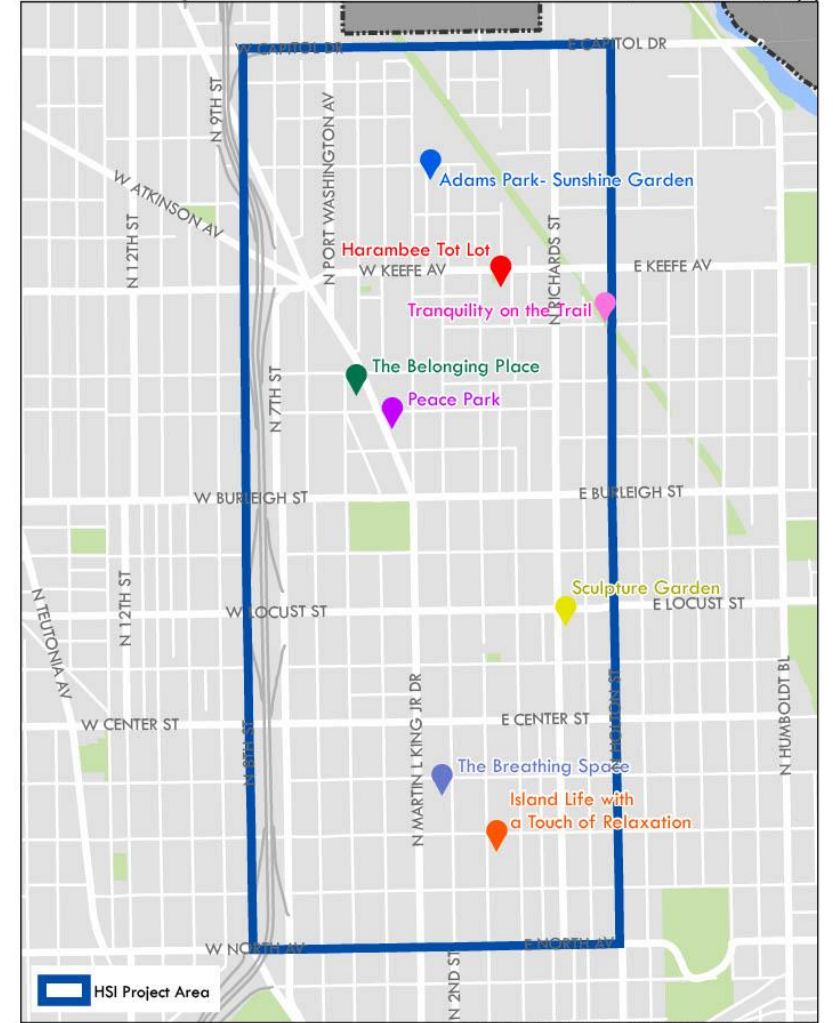
where flowers bloom so does hope

healing spaces initiative

HEALING SPACES INITIATIVE | 2021

Harambee Neighborhood

Prepared by the Department of City Development Planning Division, 2/1/2022
Source: DCD Planning Division, City of Milwaukee Information Technology Management Division






Introduction

The City launched the Healing Space Initiative in January 2021, as a response to the isolation felt by City residents as a result of quarantine and social distancing practices during the COVID-19 pandemic.

Under the direction of the Neighborhood Improvement Development Corporation, the Initiative repurposes vacant, city-owned lots to create spaces for rest and relaxation, along with community gatherings.

There are currently 8 healing spaces, located in the City's Harambee Neighborhood. Spaces are implemented and maintained by program participants, including residents and community organizations.



HSI By the Numbers | 2021

1033 doors knocked

21 Applicants

61 unique volunteers

35 visioning session attendees

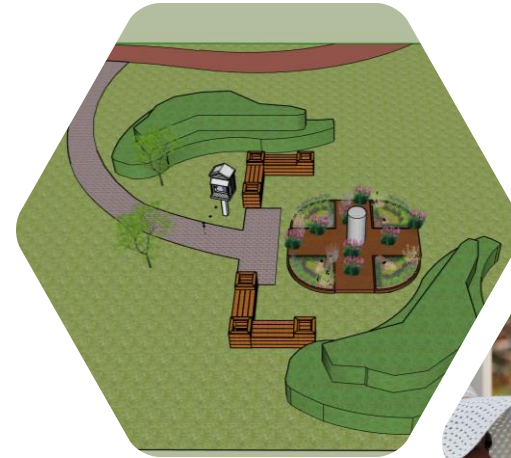
~10 volunteers at each event

~7 residents at each visioning sessions

8 Healing Spaces

Feedback

- What we did well
 - Community Engagement & Visioning
 - Community Partners
 - Implementation
- Opportunities for Improvement
 - Project Stewardship
 - Time Management
 - Community Engagement



2021 Project Cost

Amenity	Average Cost
ADA Handrail	\$1,450
Benches	\$1,190
Bird Bath	\$150
Chess Table w 2 Seats	\$850
Curved Planter	\$1,050
Library Installation	\$100
Pathway	\$2,573
Patio Area	\$2,040
Pergola	\$2,583
Picnic Table	\$350
Shade Sail	\$2,600
Fruit Trees	\$480
Vegetation (flowers, herbs)	\$1,531
Water Fountain	\$650

Average cost of materials and labor for 1 site, 2021	\$7,103
--	---------

Average Cost of total project cost of 1 site	\$9,521
--	---------



Where Flowers Bloom So
Does Hope
2022



HSI By the Numbers: 2022

5 Healing Spaces

37 Applicants

49 Visioning Session Attendees

Applications Per Neighborhood

Neighborhoods	Number of Applications
Amani	4
Arlington Heights	1
Borchert Field	3
Franklin Heights	3
Halyard Park	1
Harambee	9
Menomonee River Hills	1
Menomonee River Hills East	1
Metcalfe Park	1
North Division	2
Old North Milwaukee	1
Riverwest	2
Roosevelt Grove	1
Sherman Park	3
Uptown	1
Walkers Point	2
Walnut Hill	1
Washington Park	1
Williamsburg	0
Total Neighborhoods	19



Healing Spaces Initiative in 2022

In 2022 Healing Spaces will be built on vacant, city-owned lots as well as city-owned lots with pre-existing community projects and investment in minority majority neighborhoods.

Projects will include, among other things, pathways, benches, perennial herb and flower gardens, shade sails, solar lights, meditation sign posts, and Little Free Libraries. All Healing Space Initiative projects are ADA accessible.

Residents or community based organizations may apply, but all spaces will be underwrote by community based organizations or neighborhood groups.



Partnerships in the Community

Neighborhoods will be targeted by the following factors:

- Identified interest as discussed in DCD Planning Departments Area Comprehensive Plan
- High social vulnerability score or High Poverty status on City's Equity Mapping Tool
- Connection to strong network of committed neighborhood groups (TIN, etc.)
- Vacant Lot availability and density as provided by DCD Real Estate

Community Engagement Goals

- Inform | Create forum for Decision Making | Attract

Engagement Strategy

- Alderperson Networks
- Block Groups
- Community Partners
- Lit drops / Door to Door
- Racial Equity via GARE Toolbox

A community meeting is taking place outdoors in a grassy area. Several people are seated in folding chairs, some looking towards the camera and others looking away. In the background, there are residential houses, trees, and a utility pole. A table with a red cloth is visible in the foreground. The scene is brightly lit, suggesting a sunny day.

Targeted Neighborhoods

- Neighborhoods will be targeted by the following factors:
 - Identified interest as discussed in DCD Planning Departments Area Comprehensive Plan
 - High social vulnerability score or High Poverty status on City's Equity Mapping Tool
 - Connection to strong network of committed neighborhood groups (TIN, etc.)
 - Vacant Lot availability and density as provided by DCD Real Estate



Site Activation

Black Space Therapy Sessions

City of Milwaukee Lunch & Learns

MKE Urban Stables

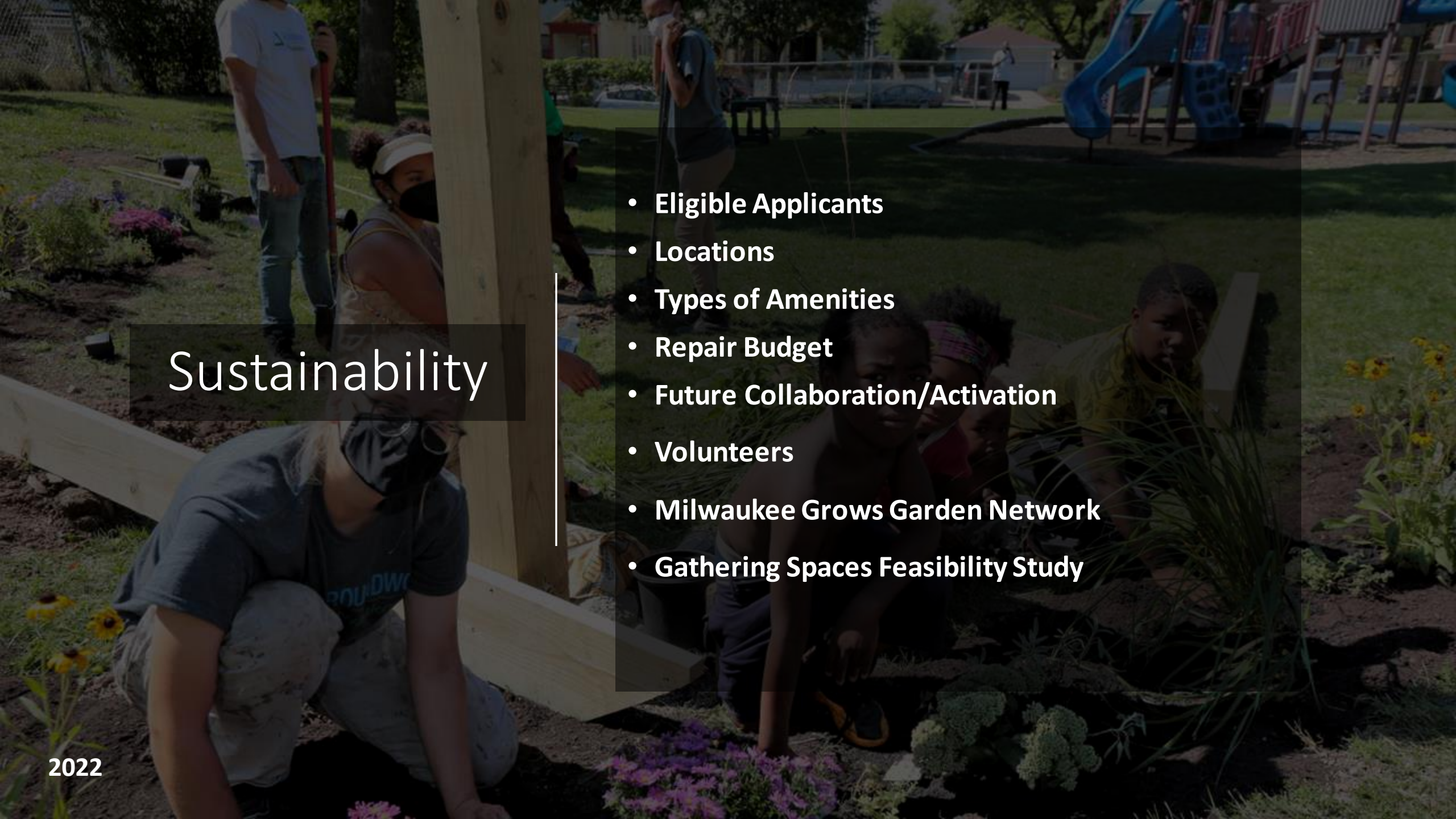
Serve 2 Unite

Trap Therapy

TRUE Skool

Zen Den Pop Up

Resident Suggestions



Sustainability

- Eligible Applicants
- Locations
- Types of Amenities
- Repair Budget
- Future Collaboration/Activation
- Volunteers
- Milwaukee Grows Garden Network
- Gathering Spaces Feasibility Study