



Milwaukee Scholars Charter School

Milwaukee, WI

**Presentation to the Zoning, Neighborhoods
and Development Committee**

January 11, 2011



Overview

- **The Partnership**
- **The Plan**
- **The Need**
- **NHA and its success with at-risk populations**
- **Issues from Plan Commission**
 - **Architecture Quality**
 - **Loss of Light Industrial Zoned Land**

The Partnership

University of Wisconsin Milwaukee

**Chris Abele, Paul Sweeney, Suzanne
Terry, Will Allen, Angela Colbert**

Charter School Operator

Authorizer



Milwaukee Scholars
Non-Profit Board



NHA

Milwaukee Scholars: Key Facts

- Public charter school open to all
- Open K-5 with 400 students, add a grade each year until K – 8 with 700 students
- Rigorous academic program based on research on how to best prepare students for college
- More than 2,000 neighborhood signatures on a petition in support of the school
- School will pay property taxes





The Plan

- UW-M has recommended approval to its Board of Regents – Decision expected at Board's February 10-11, 2011 meeting
- Brand new 45,000 sq. ft. facility on land purchased from Holy Cathedral Church of God in Christ
- Planned opening August 2011, for 2011-12 academic year
- 30 classrooms, gymnasium, art room, music room, media center / library, parent room, outdoor equipment and playfield

Why a new school?

- High need area: IFF Study (May 2010) - North of North Avenue (53218) was identified as one of the highest need areas in the city
- Public charter school provides families a tuition-free choice for a high-quality public education
- Board has chosen NHA to operate school. Has a proven track record of success with at-risk students in high-need communities
- Milwaukee Scholars looks to work within the Milwaukee Public School District to improve educational opportunities for all children



About NHA

- Accomplished operator hired by the local governing board to run Milwaukee Scholars
- Partners with 67 local boards in eight states - NY, CO, IN, OH, NC, LA, GA and MI



- Serves 42,000 students nationwide, hires local teachers
- Since partnering with its first school in 1995, NHA has invested \$400 million in its schools local communities

NHA Curriculum: College Prep Starts Here

- Curriculum was developed with College as the end goal
- Each grade's curriculum is built on mastery of what was learned in the previous grade
- Data driven – NWEA testing to drive instruction



NHA Culture: The Four Pillars

- Academic Excellence
- Moral Focus
- Parental Partnerships
- Student Responsibility

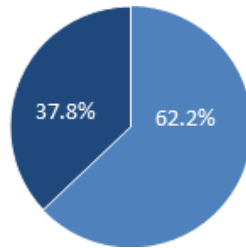


Academic Success: At-Risk Students

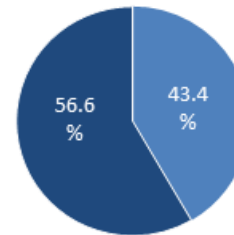
Students:

- Free or Reduced Lunch
- Not Eligible

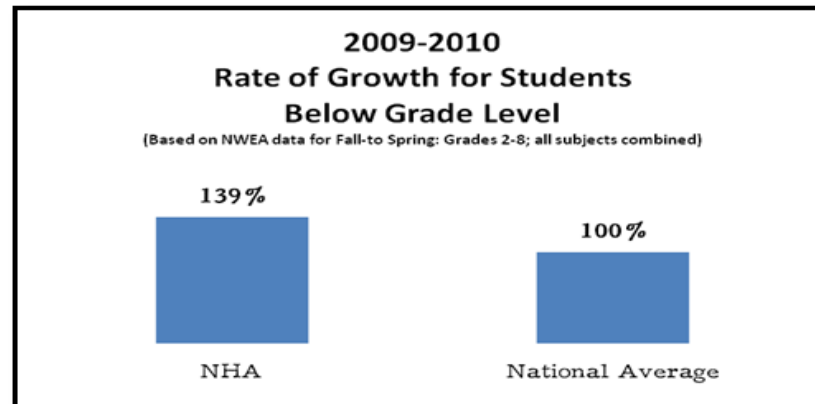
NHA schools



National Average

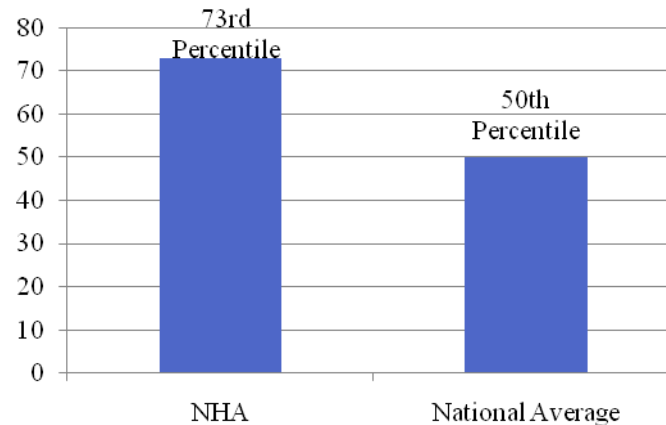


Success:



Academic Success: Urban Schools

% Students Achieving Expected Growth

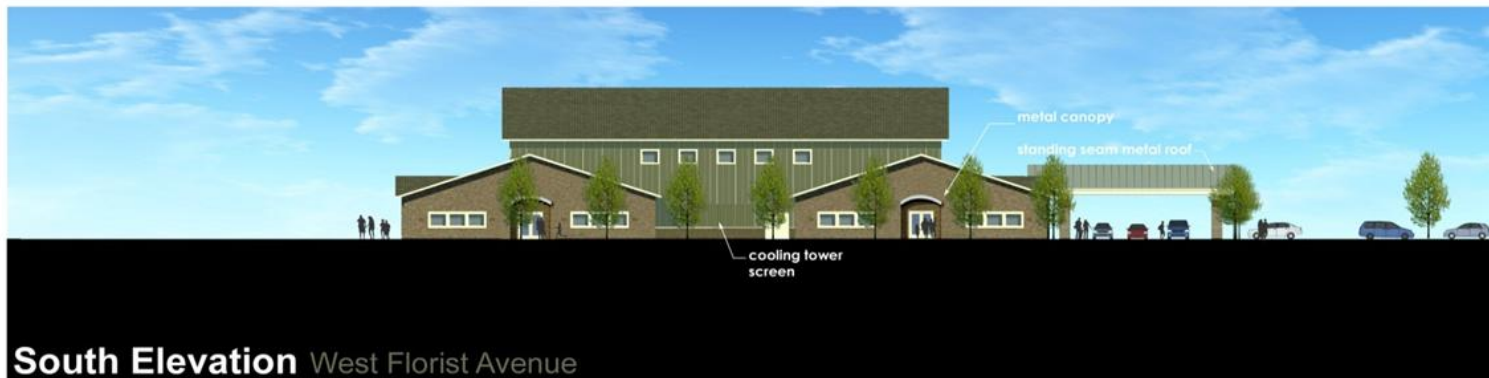


- A dozen Michigan schools that partner with NHA made the Michigan Dept. of Education's prestigious "beating the odds school" honor roll, based on academic performance with at-risk students
- NHA would rank in the nation's 100 largest urban school districts by enrollment, and operates successful schools in high-need communities in Detroit, Atlanta, Brooklyn, Buffalo, Baton Rouge, Indianapolis and Gary, IN

Concern: Architecture

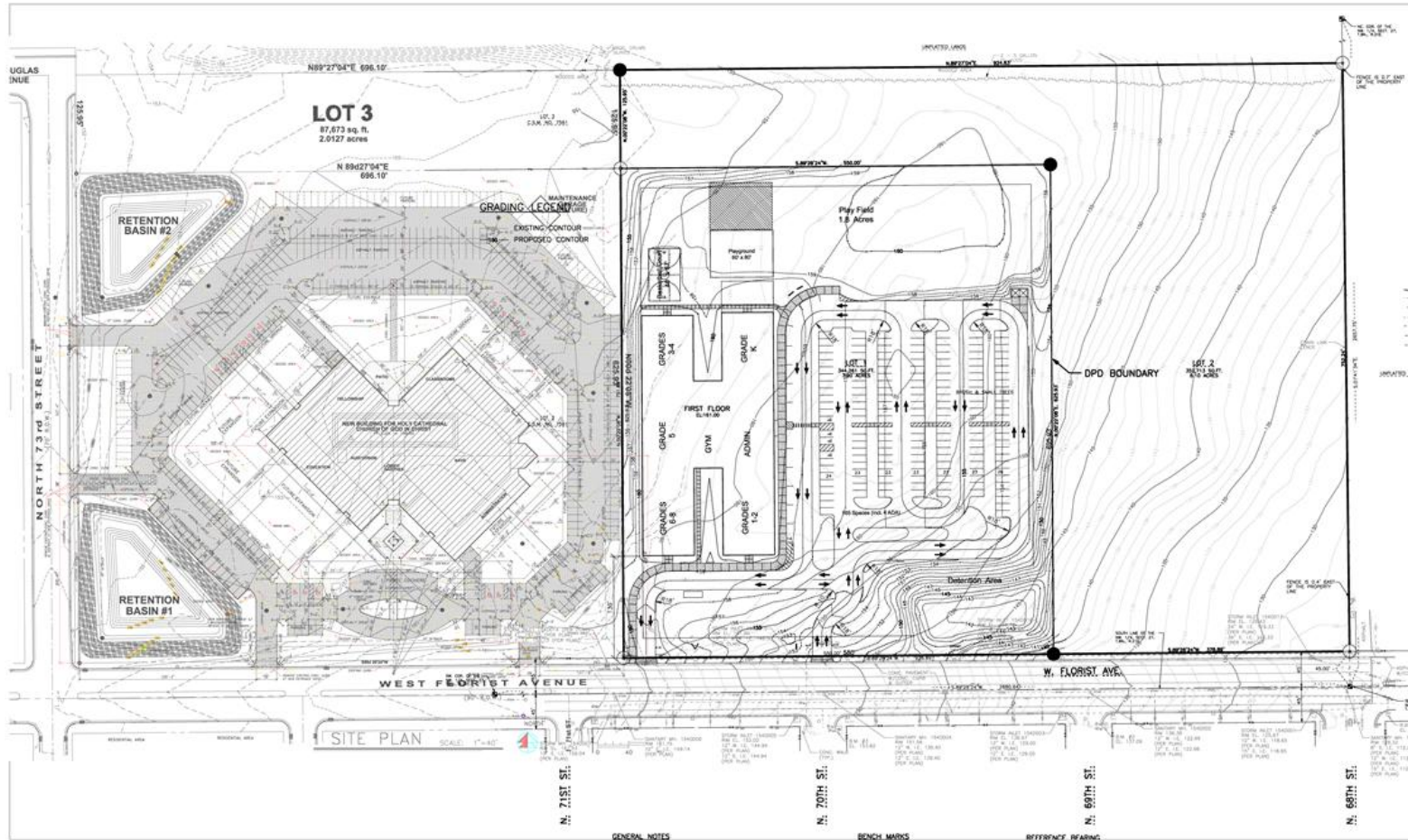
- This NHA investment focuses on maximizing academic quality and employing sustainable practices including landscape and storm water
- The building orientation has been rotated 90 degrees to obtain the desired 130-foot setback, and parking has been moved to the side at the City's request
- Visible first floor facades from West Florist Avenue include brick veneer, canopies, gables, windows
- Suburban vs. Urban Design – compatible with warm residential experience // avoids cold, institutional feel

Milwaukee Scholars Charter School



This detailed floor plan illustrates the layout of a school building, organized into several functional zones. The central core features a large gymnasium with basketball courts, surrounded by a corridor and restrooms. To the left, a long corridor provides access to numerous classrooms, labeled from 'FIRST V' to 'EIGHT W'. Adjacent to the gymnasium is a dedicated area for music, art, and a conference room, along with a food preparation area and mechanical rooms. The right side of the plan includes a principal's office, a workshop, and several computer labs. Restrooms are strategically placed throughout the building, including a large set near the gymnasium and smaller ones in the classroom wings. The layout is designed to facilitate movement between different levels of the school, with clear pathways and designated entry points.

15



Milwaukee Scholars Charter School



Concern: Loss of Light Industrial Zoned Land

- Consistent with adjacent Church site which has already been rezoned to DPD
- Little evident industrial interest // property has been vacant (other than agriculture) for 60 years, without industrial buyer
- Milwaukee Scholars will create jobs and pay property taxes for the school generating new City tax revenue

































Questions?