

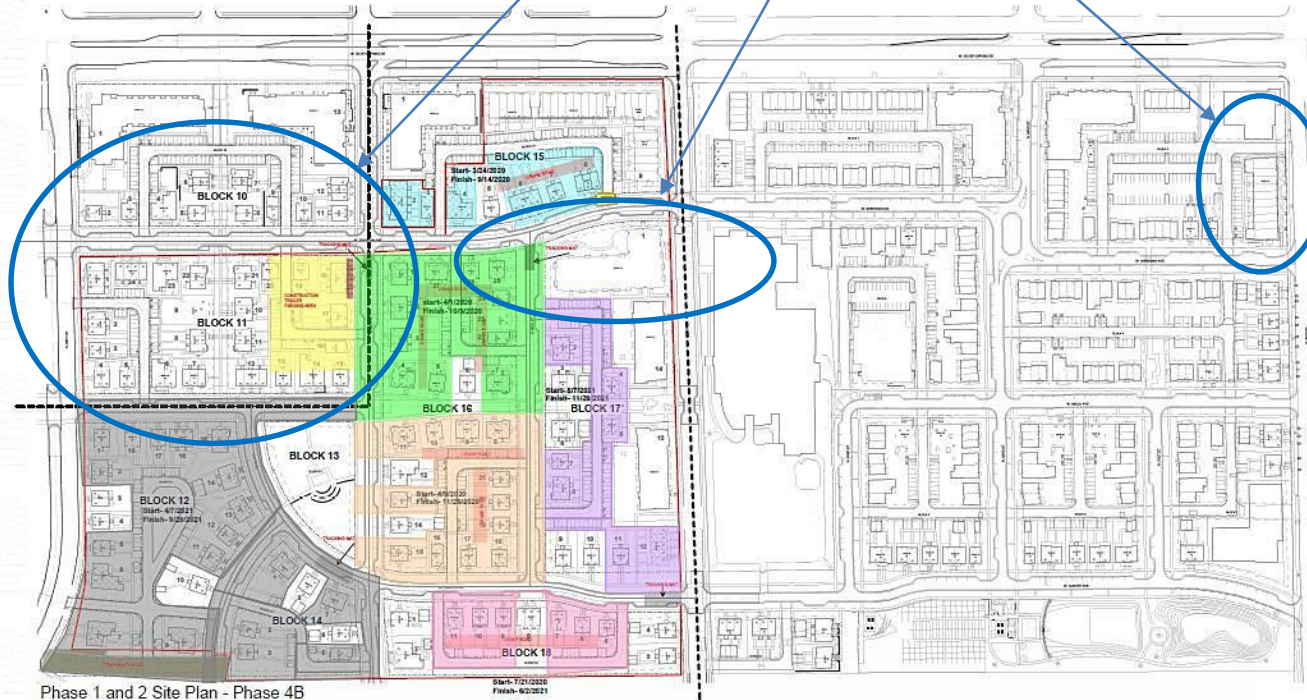


PROJECT UPDATES

- *WESTLAWN GARDENS PHASE 2*
 - *Horizontal Utilities (Phase 5)*
 - *Phase 4A Townhomes*
 - *Buildings 3-1 & 3-4*
- *CARVER PARK*

September 16, 2022

BLOCKS 10 & 11
BLDGS. 3.1 & 3.4
OCCUPANCY: APPROX. AUG. 2023
TOTAL PERSONNEL ON SITE: 65+



Phase 1 and 2 Site Plan - Phase 4B

[illegible][illegible][illegible]

| BEIN TYPE | BEIN(S) | BEIN TYPE | BEIN(S) | BEIN TYPE | BEIN(S) |
|-----------|------------|-----------|---------|-----------|---------|
| 5-1 | 46, 55, 58 | 5 | 10-1 | 42, 56 | 2 |
| 5-2 | 35, 55, 58 | 5 | 10-2 | 42, 56 | 1 |
| 5-3 | 46, 55, 58 | 5 | 10-3 | 42, 56 | 1 |
| 5-4 | 46, 55, 58 | 5 | 10-4 | 42, 56 | 0 |
| 5-5 | 35, 55, 58 | 5 | 10-5 | 42, 56 | 0 |
| 5-6 | 35, 55, 58 | 5 | 10-6 | 42, 56 | 0 |
| 5-7 | 35, 55, 58 | 5 | 10-7 | 42, 56 | 0 |
| 5-8 | 35, 55, 58 | 5 | 10-8 | 42, 56 | 0 |
| 5-9 | 35, 55, 58 | 5 | 10-9 | 42, 56 | 0 |
| 5-10 | 35, 55, 58 | 5 | 10-10 | 42, 56 | 0 |
| 5-11 | 35, 55, 58 | 5 | 10-11 | 42, 56 | 0 |
| 5-12 | 35, 55, 58 | 5 | 10-12 | 42, 56 | 0 |
| 5-13 | 35, 55, 58 | 5 | 10-13 | 42, 56 | 0 |
| 5-14 | 35, 55, 58 | 5 | 10-14 | 42, 56 | 0 |
| 5-15 | 35, 55, 58 | 5 | 10-15 | 42, 56 | 0 |
| 5-16 | 35, 55, 58 | 5 | 10-16 | 42, 56 | 0 |
| 5-17 | 35, 55, 58 | 5 | 10-17 | 42, 56 | 0 |
| 5-18 | 35, 55, 58 | 5 | 10-18 | 42, 56 | 0 |
| 5-19 | 35, 55, 58 | 5 | 10-19 | 42, 56 | 0 |
| 5-20 | 35, 55, 58 | 5 | 10-20 | 42, 56 | 0 |
| 5-21 | 35, 55, 58 | 5 | 10-21 | 42, 56 | 0 |
| 5-22 | 35, 55, 58 | 5 | 10-22 | 42, 56 | 0 |
| 5-23 | 35, 55, 58 | 5 | 10-23 | 42, 56 | 0 |
| 5-24 | 35, 55, 58 | 5 | 10-24 | 42, 56 | 0 |
| 5-25 | 35, 55, 58 | 5 | 10-25 | 42, 56 | 0 |
| 5-26 | 35, 55, 58 | 5 | 10-26 | 42, 56 | 0 |
| 5-27 | 35, 55, 58 | 5 | 10-27 | 42, 56 | 0 |
| 5-28 | 35, 55, 58 | 5 | 10-28 | 42, 56 | 0 |
| 5-29 | 35, 55, 58 | 5 | 10-29 | 42, 56 | 0 |
| 5-30 | 35, 55, 58 | 5 | 10-30 | 42, 56 | 0 |
| 5-31 | 35, 55, 58 | 5 | 10-31 | 42, 56 | 0 |
| 5-32 | 35, 55, 58 | 5 | 10-32 | 42, 56 | 0 |
| 5-33 | 35, 55, 58 | 5 | 10-33 | 42, 56 | 0 |
| 5-34 | 35, 55, 58 | 5 | 10-34 | 42, 56 | 0 |
| 5-35 | 35, 55, 58 | 5 | 10-35 | 42, 56 | 0 |
| 5-36 | 35, 55, 58 | 5 | 10-36 | 42, 56 | 0 |
| 5-37 | 35, 55, 58 | 5 | 10-37 | 42, 56 | 0 |
| 5-38 | 35, 55, 58 | 5 | 10-38 | 42, 56 | 0 |
| 5-39 | 35, 55, 58 | 5 | 10-39 | 42, 56 | 0 |
| 5-40 | 35, 55, 58 | 5 | 10-40 | 42, 56 | 0 |
| 5-41 | 35, 55, 58 | 5 | 10-41 | 42, 56 | 0 |
| 5-42 | 35, 55, 58 | 5 | 10-42 | 42, 56 | 0 |
| 5-43 | 35, 55, 58 | 5 | 10-43 | 42, 56 | 0 |
| 5-44 | 35, 55, 58 | 5 | 10-44 | 42, 56 | 0 |
| 5-45 | 35, 55, 58 | 5 | 10-45 | 42, 56 | 0 |
| 5-46 | 35, 55, 58 | 5 | 10-46 | 42, 56 | 0 |
| 5-47 | 35, 55, 58 | 5 | 10-47 | 42, 56 | 0 |
| 5-48 | 35, 55, 58 | 5 | 10-48 | 42, 56 | 0 |
| 5-49 | 35, 55, 58 | 5 | 10-49 | 42, 56 | 0 |
| 5-50 | 35, 55, 58 | 5 | 10-50 | 42, 56 | 0 |
| 5-51 | 35, 55, 58 | 5 | 10-51 | 42, 56 | 0 |
| 5-52 | 35, 55, 58 | 5 | 10-52 | 42, 56 | 0 |
| 5-53 | 35, 55, 58 | 5 | 10-53 | 42, 56 | 0 |
| 5-54 | 35, 55, 58 | 5 | 10-54 | 42, 56 | 0 |
| 5-55 | 35, 55, 58 | 5 | 10-55 | 42, 56 | 0 |
| 5-56 | 35, 55, 58 | 5 | 10-56 | 42, 56 | 0 |
| 5-57 | 35, 55, 58 | 5 | 10-57 | 42, 56 | 0 |
| 5-58 | 35, 55, 58 | 5 | 10-58 | 42, 56 | 0 |
| 5-59 | 35, 55, 58 | 5 | 10-59 | 42, 56 | 0 |
| 5-60 | 35, 55, 58 | 5 | 10-60 | 42, 56 | 0 |
| 5-61 | 35, 55, 58 | 5 | 10-61 | 42, 56 | 0 |
| 5-62 | 35, 55, 58 | 5 | 10-62 | 42, 56 | 0 |
| 5-63 | 35, 55, 58 | 5 | 10-63 | 42, 56 | 0 |
| 5-64 | 35, 55, 58 | 5 | 10-64 | 42, 56 | 0 |
| 5-65 | 35, 55, 58 | 5 | 10-65 | 42, 56 | 0 |
| 5-66 | 35, 55, 58 | 5 | 10-66 | 42, 56 | 0 |
| 5-67 | 35, 55, 58 | 5 | 10-67 | 42, 56 | 0 |
| 5-68 | 35, 55, 58 | 5 | 10-68 | 42, 56 | 0 |
| 5-69 | 35, 55, 58 | 5 | 10-69 | 42, 56 | 0 |
| 5-70 | 35, 55, 58 | 5 | 10-70 | 42, 56 | 0 |
| 5-71 | 35, 55, 58 | 5 | 10-71 | 42, 56 | 0 |
| 5-72 | 35, 55, 58 | 5 | 10-72 | 42, 56 | 0 |
| 5-73 | 35, 55, 58 | 5 | 10-73 | 42, 56 | 0 |
| 5-74 | 35, 55, 58 | 5 | 10-74 | 42, 56 | 0 |
| 5-75 | 35, 55, 58 | 5 | 10-75 | 42, 56 | 0 |
| 5-76 | 35, 55, 58 | 5 | 10-76 | 42, 56 | 0 |
| 5-77 | 35, 55, 58 | 5 | 10-77 | 42, 56 | 0 |
| 5-78 | 35, 55, 58 | 5 | 10-78 | 42, 56 | 0 |
| 5-79 | 35, 55, 58 | 5 | 10-79 | 42, 56 | 0 |
| 5-80 | 35, 55, 58 | 5 | 10-80 | 42, 56 | 0 |
| 5-81 | 35, 55, 58 | 5 | 10-81 | 42, 56 | 0 |
| 5-82 | 35, 55, 58 | 5 | 10-82 | 42, 56 | 0 |
| 5-83 | 35, 55, 58 | 5 | 10-83 | 42, 56 | 0 |
| 5-84 | 35, 55, 58 | 5 | 10-84 | 42, 56 | 0 |
| 5-85 | 35, 55, 58 | 5 | 10-85 | 42, 56 | 0 |
| 5-86 | 35, 55, 58 | 5 | 10-86 | 42, 56 | 0 |
| 5-87 | 35, 55, 58 | 5 | 10-87 | 42, 56 | 0 |
| 5-88 | 35, 55, 58 | 5 | 10-88 | 42, 56 | 0 |
| 5-89 | 35, 55, 58 | 5 | 10-89 | 42, 56 | 0 |
| 5-90 | 35, 55, 58 | 5 | 10-90 | 42, 56 | 0 |
| 5-91 | 35, 55, 58 | 5 | 10-91 | 42, 56 | 0 |
| 5-92 | 35, 55, 58 | 5 | 10-92 | 42, 56 | 0 |
| 5-93 | 35, 55, 58 | 5 | 10-93 | 42, 56 | 0 |
| 5-94 | 35, 55, 58 | 5 | 10-94 | 42, 56 | 0 |
| 5-95 | 35, 55, 58 | 5 | 10-95 | 42, 56 | 0 |
| 5-96 | 35, 55, 58 | 5 | 10-96 | 42, 56 | 0 |
| 5-97 | 35, 55, 58 | 5 | 10-97 | 42, 56 | 0 |
| 5-98 | 35, 55, 58 | 5 | 10-98 | 42, 56 | 0 |
| 5-99 | 35, 55, 58 | 5 | 10-99 | 42, 56 | 0 |
| 5-100 | 35, 55, 58 | 5 | 10-100 | 42, 56 | 0 |
| 5-101 | 35, 55, 58 | 5 | 10-101 | 42, 56 | 0 |
| 5-102 | 35, 55, 58 | 5 | 10-102 | 42, 56 | 0 |
| 5-103 | 35, 55, 58 | 5 | 10-103 | 42, 56 | 0 |
| 5-104 | 35, 55, 58 | 5 | 10-104 | 42, 56 | 0 |
| 5-105 | 35, 55, 58 | 5 | 10-105 | 42, 56 | 0 |
| 5-106 | 35, 55, 58 | 5 | 10-106 | 42, 56 | 0 |
| 5-107 | 35, 55, 58 | 5 | 10-107 | 42, 56 | 0 |
| 5-108 | 35, 55, 58 | 5 | 10-108 | 42, 56 | 0 |
| 5-109 | 35, 55, 58 | 5 | 10-109 | 42, 56 | 0 |
| 5-110 | 35, 55, 58 | 5 | 10-110 | 42, 56 | 0 |
| 5-111 | 35, 55, 58 | 5 | 10-111 | 42, 56 | 0 |
| 5-112 | 35, 55, 58 | 5 | 10-112 | 42, 56 | 0 |
| 5-113 | 35, 55, 58 | 5 | 10-113 | 42, 56 | 0 |
| 5-114 | 35, 55, 58 | 5 | 10-114 | 42, 56 | 0 |
| 5-115 | 35, 55, 58 | 5 | 10-115 | 42, 56 | 0 |
| 5-116 | 35, 55, 58 | 5 | 10-116 | 42, 56 | 0 |
| 5-117 | 35, 55, 58 | 5 | 10-117 | 42, 56 | 0 |
| 5-118 | 35, 55, 58 | 5 | 10-118 | 42, 56 | 0 |
| 5-119 | 35, 55, 58 | 5 | 10-119 | 42, 56 | 0 |
| 5-120 | 35, 55, 58 | 5 | 10-120 | 42, 56 | 0 |
| 5-121 | 35, 55, 58 | 5 | 10-121 | 42, 56 | 0 |
| 5-122 | 35, 55, 58 | 5 | 10-122 | 42, 56 | 0 |
| 5-123 | 35, 55, 58 | 5 | 10-123 | 42, 56 | 0 |
| 5-124 | 35, 55, 58 | 5 | 10-124 | 42, 56 | 0 |
| 5-125 | 35, 55, 58 | 5 | 10-125 | 42, 56 | 0 |
| 5-126 | 35, 55, 58 | 5 | 10-126 | 42, 56 | 0 |
| 5-127 | 35, 55, 58 | 5 | 10-127 | 42, 56 | 0 |
| 5-128 | 35, 55, 58 | 5 | 10-128 | 42, 56 | 0 |
| 5-129 | 35, 55, 58 | 5 | 10-129 | 42, 56 | 0 |
| 5-130 | 35, 55, 58 | 5 | 10-130 | 42, 56 | 0 |
| 5-131 | 35, 55, 58 | 5 | 10-131 | 42, 56 | 0 |
| 5-132 | 35, 55, 58 | 5 | 10-132 | 42, 56 | 0 |
| 5-133 | 35, 55, 58 | 5 | 10-133 | 42, 56 | 0 |
| 5-134 | 35, 55, 58 | 5 | 10-134 | 42, 56 | 0 |
| 5-135 | 35, 55, 58 | 5 | 10-135 | 42, 56 | 0 |
| 5-136 | 35, 55, 58 | 5 | 10-136 | 42, 56 | 0 |
| 5-137 | 35, 55, 58 | 5 | 10-137 | 42, 56 | 0 |
| 5-138 | 35, 55, 58 | 5 | 10-138 | 42, 56 | 0 |
| 5-139 | 35, 55, 58 | 5 | 10-139 | 42, 56 | 0 |
| 5-140 | 35, 55, 58 | 5 | 10-140 | 42, 56 | 0 |
| 5-141 | 35, 55, 58 | 5 | 10-141 | 42, 56 | 0 |
| 5-142 | 35, 55, 58 | 5 | 10-142 | 42, 56 | 0 |
| 5-143 | 35, 55, 58 | 5 | 10-143 | 42, 56 | 0 |
| 5-144 | 35, 55, 58 | 5 | 10-144 | 42, 56 | 0 |
| 5-145 | 35, 55, 58 | 5 | 10-145 | 42, 56 | 0 |
| 5-146 | 35, 55, 58 | 5 | 10-146 | 42, 56 | 0 |
| 5-147 | 35, 55, 58 | 5 | 10-147 | 42, 56 | 0 |
| 5-148 | 35, 55, 58 | 5 | 10-148 | 42, 56 | 0 |
| 5-149 | 35, 55, 58 | 5 | 10-149 | 42, 56 | 0 |
| 5-150 | 35, 55, 58 | 5 | 10-150 | 42, 56 | 0 |
| 5-151 | 35, 55, 58 | 5 | 10-151 | 42, 56 | 0 |
| 5-152 | 35, 55, 58 | 5 | 10-152 | 42, 56 | 0 |
| 5-153 | 35, 55, 58 | 5 | 10-153 | 42, 56 | 0 |
| 5-154 | 35, 55, 58 | 5 | 10-154 | 42, 56 | 0 |
| 5-155 | 35, 55, 58 | 5 | 10-155 | 42, 56 | 0 |
| 5-156 | 35, 55, 58 | 5 | 10-156 | 42, 56 | 0 |
| 5-157 | 35, 55, 58 | 5 | 10-157 | 42, 56 | 0 |
| 5-158 | 35, 55, 58 | 5 | 10-158 | 42, 56 | 0 |
| 5-159 | 35, 55, 58 | 5 | 10-159 | 42, 56 | 0 |
| 5-160 | 35, 55, 58 | 5 | 10-160 | 42, 56 | 0 |
| 5-161 | 35, 55, 58 | 5 | 10-161 | 42, 56 | 0 |
| 5-162 | 35, 55, 58 | 5 | 10-162 | 42, 56 | 0 |
| 5-163 | 35, 55, 58 | 5 | 10-163 | 42, 56 | 0 |
| 5-164 | 35, 55, 58 | 5 | 10-164 | 42, 56 | 0 |
| 5-165 | 35, 55, 58 | 5 | 10-165 | 42, 56 | 0 |
| 5-166 | 35, 55, 58 | 5 | 10-166 | 42, 56 | 0 |
| 5-167 | 35, 55, 58 | 5 | 10-167 | 42, 56 | 0 |
| 5-168 | 35, 55, 58 | 5 | 10-168 | 42, 56 | 0 |
| 5-169 | 35, 55, 58 | 5 | 10-169 | 42, 56 | 0 |
| 5-170 | 35, 55, 58 | 5 | 10-170 | 42, 56 | 0 |
| 5-171 | 35, 55, 58 | 5 | 10-171 | 42, 56 | 0 |
| 5-172 | 35, 55, 58 | 5 | 10-172 | 42, 56 | 0 |
| 5-173 | 35, 55, 58 | 5 | 10-173 | 42, 56 | 0 |
| 5-174 | 35, 55, 58 | 5 | 10-174 | 42, 56 | 0 |
| 5-175 | 35, 55, 58 | 5 | 10-175 | 42, 56 | 0 |
| 5-176 | 35, 55, 58 | 5 | 10-176 | 42, 56 | 0 |
| 5-177 | 35, 55, 58 | 5 | 10-177 | 42, 56 | 0 |
| 5-178 | 35, 55, 58 | 5 | 10-178 | 42, 56 | 0 |
| 5-179 | 35, 55, 58 | 5 | 10-179 | 42, 56 | 0 |
| 5-180 | 35, 55, 58 | 5 | 10-180 | 42, 56 | 0 |
| 5-181 | 35, 55, 58 | 5 | 10-181 | 42, 56 | 0 |
| 5-182 | 35, 55, 58 | 5 | 10-182 | 42, 56 | 0 |
| 5-183 | 35, 55, 58 | 5 | 10-183 | 42, 56 | 0 |
| 5-184 | 35, 55, 58 | 5 | 10-184 | 42, 56 | 0 |
| 5-185 | 35, 55, 58 | 5 | 10-185 | 42, 56 | 0 |
| 5-186 | 35, 55, 58 | 5 | 10-186 | 42, 56 | 0 |
| 5-187 | 35, 55, 58 | 5 | 10-187 | 42, 56 | 0 |
| 5-188 | 35, 55, 58 | 5 | 10-188 | 42, 56 | 0 |
| 5-189 | 35, 55, 58 | 5 | 10-189 | 42, 56 | 0 |
| 5-190 | 35, 55, 58 | 5 | 10-190 | 42, 56 | 0 |
| 5-191 | 35, 55, 58 | 5 | 10-191 | 42, 56 | 0 |
| 5-192 | 35, 55, 58 | 5 | 10-192 | 42, 56 | 0 |
| 5-193 | 35, 55, 58 | 5 | 10-193 | 42, 56 | 0 |
| 5-194 | 35, 55, 58 | 5 | 10-194 | 42, 56 | 0 |
| 5-195 | 35, 55, 58 | 5 | 10-195 | 42, 56 | 0 |
| 5-196 | 35, 55, 58 | 5 | 10-196 | 42, 56 | 0 |
| 5-197 | 35, 55, 58 | 5 | 10-197 | 42, 56 | 0 |
| 5-198 | 35, 55, 58 | 5 | 10-198 | 42, 56 | 0 |
| 5-199 | 35, 55, 58 | 5 | 10-199 | 42, 56 | 0 |
| 5-200 | | | | | |

Drawing No. _____
 Date _____

TORTI GALLAS AND PARTNERS, INC.

PHASE 4B, ISSUED FOR BID - 12/23/2019

**Phase 4B,
Building
Location
Plan**

Date
03/09/19

Principal in Charge
MA

Project Architect
WT

Approved
WT

Drawn
MB, BC, AC, AE

Job No.
10371.02

Scale
1" = 32'-0"

Drawing No.
G003_4B



WESTLAWN GARDENS 2

HORIZONTAL UTILITIES (PHASE 5)

NARRATIVE SUMMARY

Bioswale Paving System

Start date: August 15, 2022

Roadway System Alterations

Start date: TBD

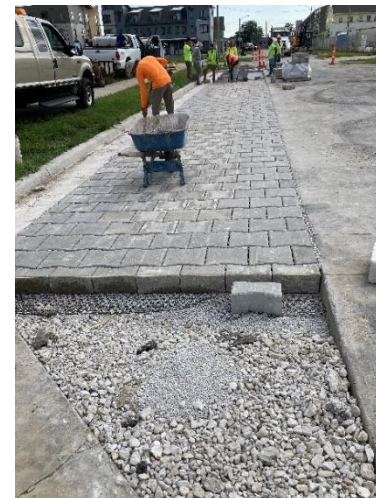
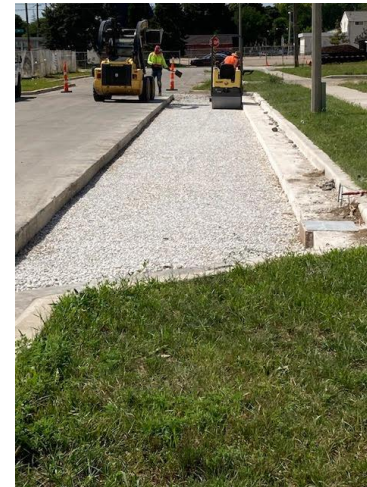
WESTLAWN GARDENS 2 - PHASE 5

HORIZONTAL UTILITIES AND ROADWAY BID PACKAGE



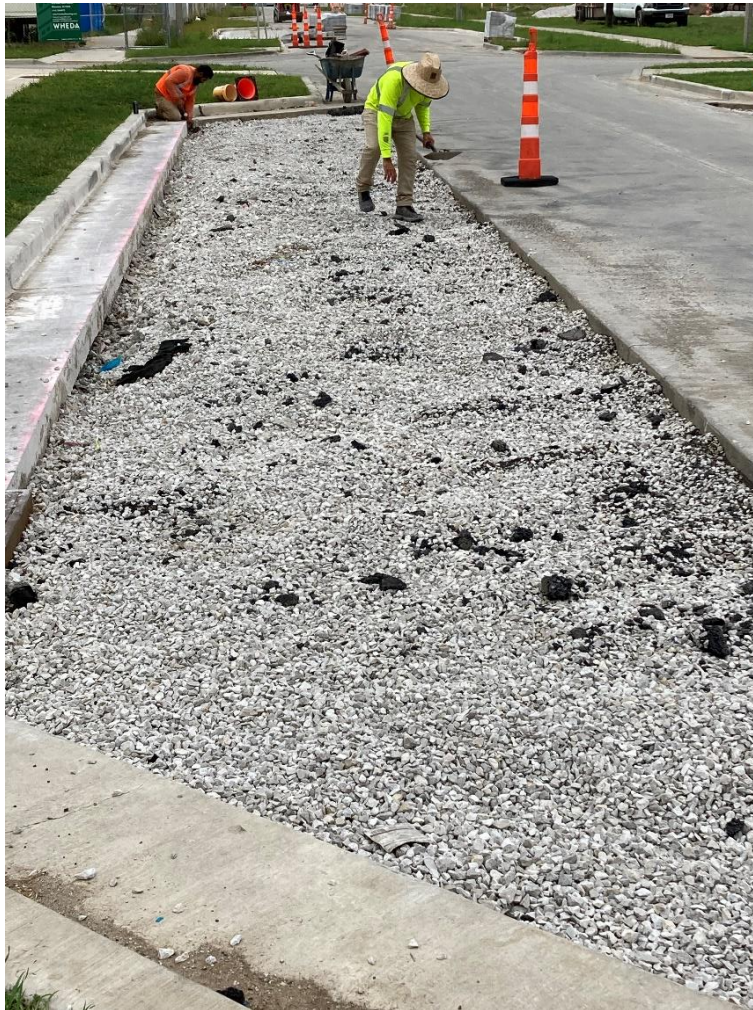
Pavement Drain
Permeable
Paving System
Installation

10 of 44 total
locations
complete



WESTLAWN GARDENS 2 - PHASE 5

HORIZONTAL UTILITIES AND ROADWAY BID PACKAGE



WESTLAWN GARDENS 2 - PHASE 5

VIDEO OF WORK IN PROGRESS



VIDEO:
BRICK PAVER LAYING
(1 min 51 sec)

PROBST
VM-X-PAVERMAX
Installation Machine

WESTLAWN GARDENS 2

PHASE 4A TOWNHOMES

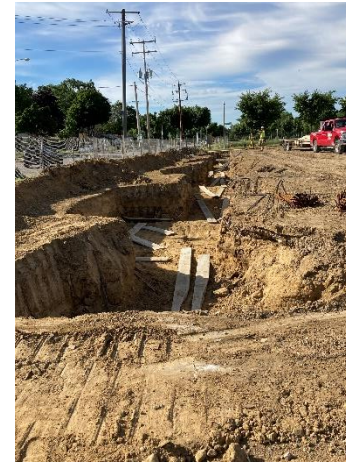
NARRATIVE SUMMARY



- Work started August 7, 2022
- 18 of 22 basements excavated
- 18 of 22 footings/foundations completed
- 2 townhomes under construction

WESTLAWN GARDENS 2 - PHASE 4A

PHOTOS OF WORK IN PROGRESS



WESTLAWN GARDENS 2 - PHASE 4A

PHOTOS OF WORK IN PROGRESS



WESTLAWN GARDENS 2 - PHASE 4A

PHOTOS OF WORK IN PROGRESS



WESTLAWN GARDENS 2

BUILDING 3.1

NARRATIVE SUMMARY



- Work started August 7, 2022
- Excavation of building:
100% complete
- Interior MEP:
20% complete

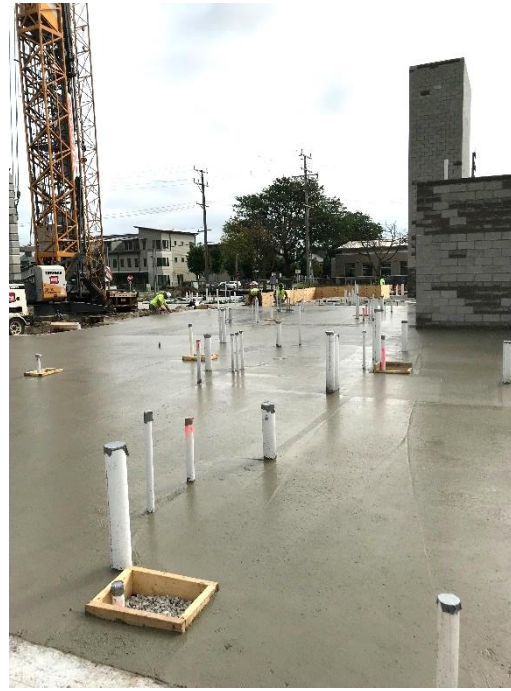
WESTLAWN GARDENS 2 – BLDG 3.1

WALL FRAMING OF FIRST FLOOR



WESTLAWN GARDENS 2 – BLDG 3.1

FINISH SLAB ON GRADE CONCRETE WORK



WESTLAWN GARDENS 2 – BLDG 3.1

UNDERGROUND UTILITY WORK



WESTLAWN GARDENS 2 – BLDG 3.1

ELEVATOR TOWER



WESTLAWN GARDENS 2

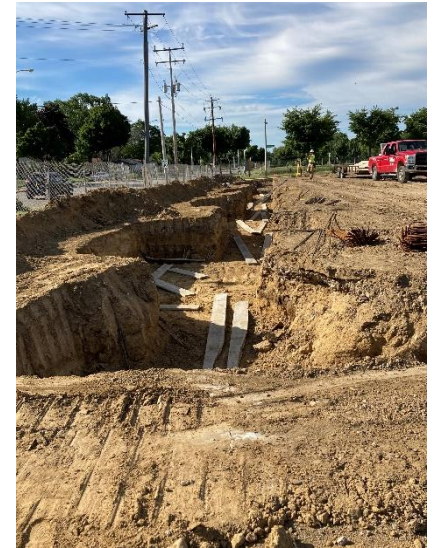
BUILDING 3.4

NARRATIVE SUMMARY

- Work started August 7, 2022
- Excavation of building:
100% complete
- Interior MEP:
75% complete

WESTLAWN GARDENS 2 – BLDG 3.4

FOOTINGS AND FOOTING WALLS BEING POURED



WESTLAWN GARDENS 2 – BLDG 3.4

BACKFILLING AND UNDERGROUND UTILITIES

WORK IN PROGRESS



CARVER PARK

NARRATIVE SUMMARY

Onsite work started Tuesday, August 16, 2022 following relocation of the first resident. To date, 10 households have been relocated and are in some stage of demo/construction.

Future work includes sidewalk repairs, landscaping repairs, and signage for the site and ADA parking areas.

CARVER PARK

PHOTOS OF WORK IN PROGRESS



Internal upgrades include new painting and flooring replacement, lighting and plumbing fixture upgrades, new appliances, and accessibility upgrades in some units.

CARVER PARK

PHOTOS OF WORK IN PROGRESS



Furnaces and domestic hot water heaters are being replaced with new high efficient models.



CARVER PARK

PHOTOS OF WORK IN PROGRESS



Air conditioning
units are being
replaced

CARVER PARK

PHOTOS OF WORK IN PROGRESS



Exterior siding
and downspout
repairs.





THANK YOU!