

File No. 220299. Substitute resolution relating to a Minor Modification to the Detailed Planned Development known as Good Hope Industrial Center to allow additional fencing and other site changes at HellermannTyton's facilities located at 6701 West Good Hope Road, on the south side of West Good Hope Road, west of North 60th Street, in the 9th Aldermanic District.



File No. 220299. Site context.



View from entry drive looking south



View from entry drive looking east



View from Good Hope Rd looking southeast at entry drive



Northwest Side Area Plan

- Adopted in 2007
- The Minor Modification to the DPD is consistent with the recommendations of the Plan.

Proposed New Asphalt Paving for Vehicle Circulation



Good Hope Street View Looking South

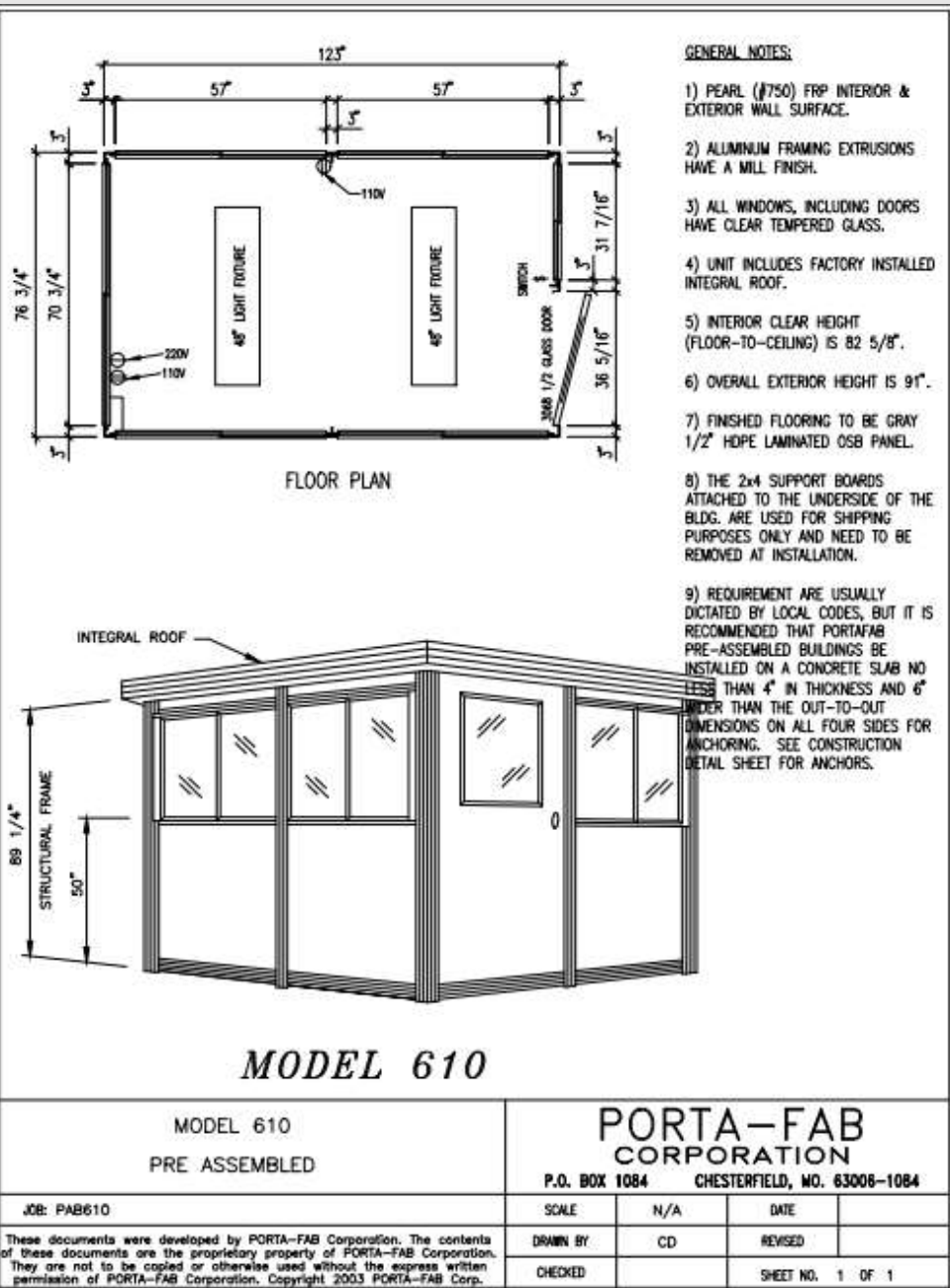


Street View Looking South from Proposed Guard Shack



Street View Looking East from Proposed Guard Shack





- GENERAL NOTES:**
- 1) PEARL (#750) FRP INTERIOR & EXTERIOR WALL SURFACE.
 - 2) ALUMINUM FRAMING EXTRUSIONS HAVE A MILL FINISH.
 - 3) ALL WINDOWS, INCLUDING DOORS HAVE CLEAR TEMPERED GLASS.
 - 4) UNIT INCLUDES FACTORY INSTALLED INTEGRAL ROOF.
 - 5) INTERIOR CLEAR HEIGHT (FLOOR-TO-CEILING) IS 82 5/8".
 - 6) OVERALL EXTERIOR HEIGHT IS 91".
 - 7) FINISHED FLOORING TO BE GRAY 1/2" HDPE LAMINATED OSB PANEL.
 - 8) THE 2x4 SUPPORT BOARDS ATTACHED TO THE UNDERSIDE OF THE BLDG. ARE USED FOR SHIPPING PURPOSES ONLY AND NEED TO BE REMOVED AT INSTALLATION.
 - 9) REQUIREMENTS ARE USUALLY DICTATED BY LOCAL CODES, BUT IT IS RECOMMENDED THAT PORTAFAB PRE-ASSEMBLED BUILDINGS BE INSTALLED ON A CONCRETE SLAB NO LESS THAN 4" IN THICKNESS AND 6" WIDER THAN THE OUT-TO-OUT DIMENSIONS ON ALL FOUR SIDES FOR ANCHORING. SEE CONSTRUCTION DETAIL SHEET FOR ANCHORS.

MODEL 610

MODEL 610 PRE ASSEMBLED		PORTA-FAB CORPORATION P.O. BOX 1084 CHESTERFIELD, MO. 63006-1084		
JOB: PAB610	SCALE	N/A	DATE	
These documents were developed by PORTA-FAB Corporation. The contents of these documents are the proprietary property of PORTA-FAB Corporation. They are not to be copied or otherwise used without the express written permission of PORTA-FAB Corporation. Copyright 2003 PORTA-FAB Corp.	DRAWN BY	CD	REVISED	
	CHECKED			SHEET NO. 1 OF 1