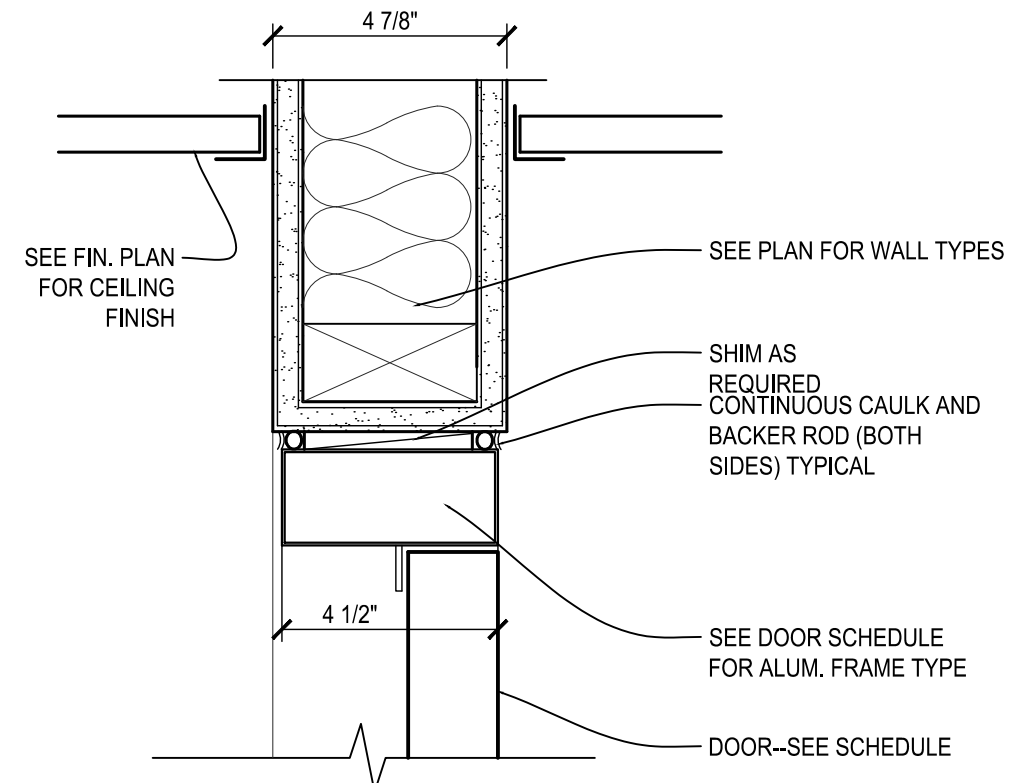
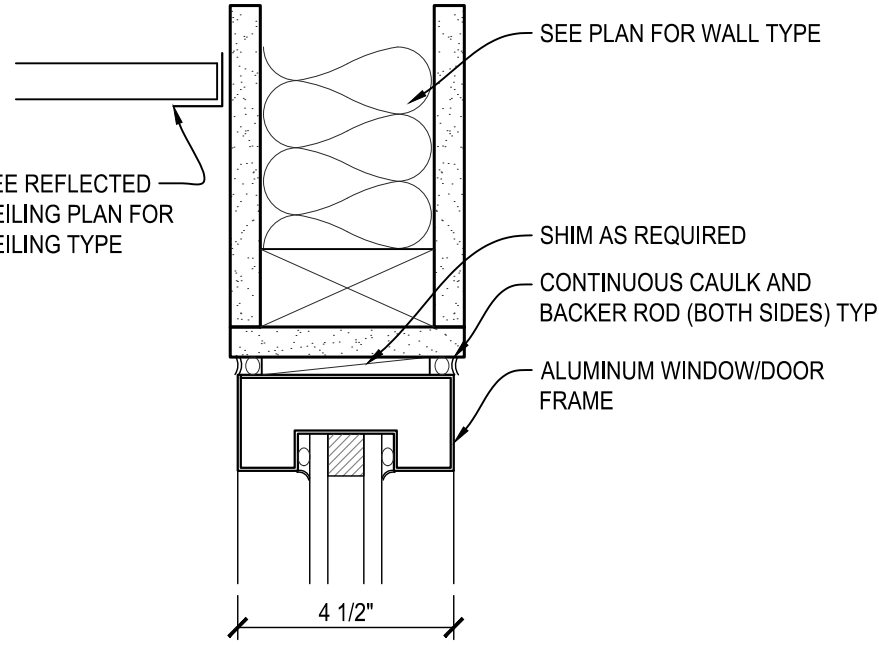


DOOR, WINDOW FRAME & HARDWARE SCHEDULE											
DOOR / FRAME MARK	ROOM NAME	ROOM NO	DOOR				FRAME		WINDOW TYPE	HARDWARE SET	REMARKS
			SIZE	THK	MATERIAL	TYPE	MATERIAL	TYPE			
100	VESTIBULE	100	3'-0" x +/- 7'-0"	-	ALUM	ALUM1	ALUM	B	--	H1	NEW DOOR/FRAME ASSEMBLY IN EXISTING WALL
102	STAIR	102	3'-0" x 7'-0"	1-3/4"	WD	WD1	WD	A	--	H3	1 HOUR FIRE RATED DOOR & ASSEMBLY
103	LOBBY	103	-	-	-	-	ALUM	D	--	-	--
103A	LOBBY	103	3'-0" x 7'-0"	-	WD	ALUM1	ALUM	B	--	H2	--
103B	LOBBY	103	-	-	-	-	ALUM	D	--	-	--
104	TELLERS	104	SEE CASEWORK	-	-	-	-	-	--	H7	GATE & HARDWARE BY CASEWORKER
104A	TELLERS	104	SEE CASEWORK	-	-	-	-	-	--	H7	GATE & HARDWARE BY CASEWORKER
112	PASSAGE	112	+/- 3'-0" x 7'-0"	EXIST.	SALVAGED	SALVAGED	SALVAGED	SALVAGED	--	H6	DOOR IS SALVAGED FORM ANOTHER AREA. FREE EGRESS FROM TELLER SIDE, KEYED ON PASSAGE SIDE
116	EMPLOYEE WORK AREA	116	+/- 3'-0" x 7'-0"	EXIST.	SALVAGED	SALVAGED	SALVAGED	SALVAGED	--	H6	DOOR IS SALVAGED FORM ANOTHER AREA. FREE EGRESS FROM EMPLOYEE WORK AREA SIDE, KEYED ON EXIST. OPEN OFFICE SIDE
142	TRAINING	142	+/- 3'-0" x 7'-0"	EXIST.	SALVAGED	SALVAGED	SALVAGED	SALVAGED	--	H6	DOOR IS SALVAGED FORM ANOTHER AREA.
142A	TRAINING	142	-	-	-	-	WD	E	--	-	--



ALUMN DOOR HEAD/JAMB

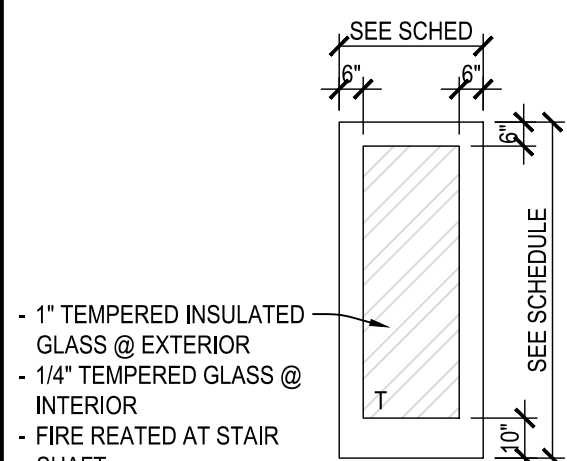
SCALE: 3" = 1'-0"



ALUMN WINDOW HEAD/JAMB

SCALE: 3" = 1'-0"

DOOR TYPES:

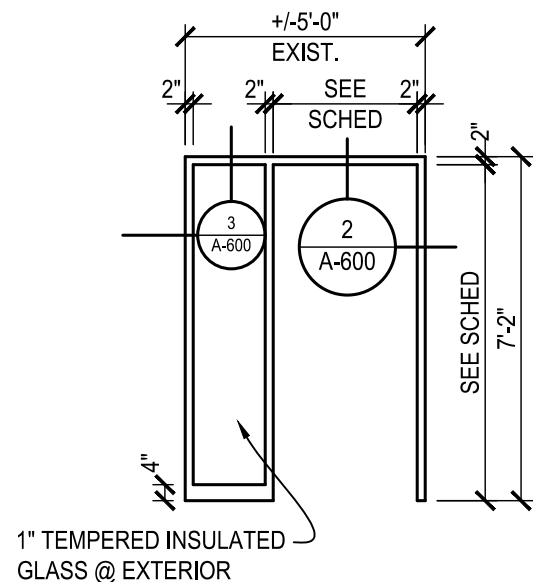


ALUM1

ALUMINUM DOOR WITH FULL LITE

- 1" TEMPERED INSULATED GLASS @ EXTERIOR
- 1/4" TEMPERED GLASS @ INTERIOR
- FIRE REATED AT STAIR SHAFT

DOOR & WINDOW FRAME TYPES:



ALUMINUM STOREFRONT DOOR FRAME

HARDWARE TYPES

- H1 (ALUMINUM ENTRY - BRANCH)
- CONTINUOUS HINGE
  - CYLINDER LOCK / RIM EXIT DEVICE
  - PULL HANDLE
  - ADA POWER ASSIST
  - ELECTRIC STRIKE / FUTURE CARD READER
  - DOOR CONTACT W/ BATTERY BACKUP
  - POWER SUPPLY
  - ADA THRESHOLD (THERMALLY BROKEN)
  - WEATHER STRIPPING & SWEEP

GENERAL DOOR & HARDWARE NOTES

1. ON GLAZING: "T" INDICATES TEMPERED SAFETY GLAZING
2. VERIFY ALL KEYING AND HARDWARE WITH OWNER.
3. ALL HARDWARE SHALL COMPLY WITH ADA REQUIREMENTS.
4. LEVERS TO BE DORMA - C800, LR SERIES, FINISH 626 SATIN CHROME. ALL OTHER DOOR HARDWARE FINISH TO BE COMMERCIAL GRADE WITH FINISH TO MATCH LEVERS.
5. CLOSER FORCE SHALL BE SET TO 8 LBS. AT EXTERIOR DOORS AND 5 LBS. AT INTERIOR DOORS.
6. SEE FLOOR PLANS FOR DOOR SWINGS.
7. PROVIDE LOW-PROFILE ADA THRESHOLDS ON ALL EXTERIOR SWING DOORS.
8. ALL WOOD VENEER DOORS TO BE BIRCH VENEER, STAINED/SEALED/VARNISHED SSV-1. REFER TO FINISH PLAN FOR COLOR (REFER TO LA MACCHIA GROUP SAMPLE BOOK FOR CONTROL SAMPLE).
9. ALL WOOD DOOR FRAMES TO BE PAINTED PT-1.
10. HAND-ACTIVATED DOOR OPENING HARDWARE SHALL BE CENTERED AT 42-INCHES ABOVE THE FLOOR. LATCHING AND LOCKING DOORS THAT ARE HAND-ACTIVATED AND WHICH ARE IN THE PATH OF EGRESS TRAVEL SHALL BE OPERABLE WITH A SINGLE EFFORT BY LEVER TYPE HARDWARE, PANIC BARS, PUSH-PULL, ACTIVATING BARS OR OTHER HARDWARE DESIGNED TO PROVIDE PASSAGE WITHOUT REQUIRING THE ABILITY TO GRASP THE OPENING HARDWARE. LOCKED EXIT DOORS SHALL OPERATE AS NOTED ABOVE IN EGRESS DIRECTION, AND ARE TO BE OPERABLE WITHOUT THE USE OF A KEY OR ANY SPECIAL KNOWLEDGE, EFFORT, OR ASSISTANCE.

DIVISION 8 - OPENINGS

ALUMINUM DOORS AND FRAMES

GENERAL:

1. FURNISH AND INSTALL EVERYTHING NECESSARY FOR OR INCIDENTAL TO COMPLETING ALL ALUMINUM ENTRANCE DOOR AND STOREFRONT FRAMING, AS SHOWN ON THE DRAWINGS AND/OR SPECIFICATIONS.
2. QUALITY ASSURANCE, DESIGN AND SIZE MEMBERS IN ACCORDANCE WITH STATE AND LOCAL CODES. AIR INFILTRATION SHALL COMPLY WITH ASTM E 283. WATER INFILTRATION SHALL COMPLY WITH ASTM E 331.
3. LIMIT MULLION DEFLECTION TO 1/200 .
4. SUBMIT THE FOLLOWING ITEMS TO THE GENERAL CONTRACTOR FOR REVIEW. DO NOT BEGIN FABRICATION UNTIL SUBMITTALS HAVE BEEN APPROVED.
  - a. SUBMIT SHOP DRAWINGS SHOWING PLACEMENT PLANS AND COMPLETE DETAILS OF ALL UNITS, LOCATION OF OPENINGS, ANCHORAGE DETAILS, MEMBER IDENTIFICATION MARKS AND ANY OTHER PERTINENT INFORMATION.
  5. WARRANTY: SUBMIT EXECUTED COPY OF MANUFACTURER'S JOINT AND SEVERAL AGREEMENT TO COVER COMPLETE ALUMINUM ENTRANCE AND STOREFRONT SYSTEM FOR A PERIOD OF FIVE YEARS.

MATERIALS:

1. MANUFACTURER: KAWNEER CO. PRODUCT NUMBERS AND INSTRUCTIONS ARE USED AS A BASE.
2. DOOR MATERIALS: SEE PLANS FOR STYLE.
  - 2.1. FINISH: SEE PLANS.
3. INTERIOR GLAZING FRAMES: TRIFAB 451 FOR 1/4" GLASS.
  - 3.1. FINISH: SEE PLANS.

INSTALLATION:

1. INSTALL ENTRY DOORS, STOREFRONT AND ACCESSORIES IN ACCORDANCE WITH MANUFACTURER'S RECOMMENDATIONS AND AS SPECIFIED.
2. REMOVE EXCESS SEALANTS BY MODERATE USE OF MINERAL SPIRITS OR OTHER SOLVENT ACCEPTABLE TO SEALANT MANUFACTURER, CLEAN ALUMINUM PER MANUFACTURERS RECOMMENDATIONS.



EXISTING:  
- STOREFRONT: (2) +/- 2'-6" ACTIVE OUTSWING DOORS.  
- COLOR: DARK BRONZE



PROPOSED:  
- STOREFRONT: SINGLE 3'-0" ACTIVE OUTSWING DOOR W/ +/- 2'-0" SIDELITE  
- COLOR: DARK BRONZE (MATCHING EXISTING)



PROPOSED DOOR SYSTEM TO BE REPLACED

DESIGN/BUILDER:

OUR BUSINESS IS BUILDING YOURS

**LaMACCHIA GROUP**

PLAN • BRAND • DESIGN • BUILD • EVOLVE  
157 North Milwaukee Street  
Milwaukee, Wisconsin 53202  
T 414.223.4400 F 414.223.4488  
www.lamacchiagroup.com

**FIRST FEDERAL BANK**

FIRST FEDERAL BANK OF WISCONSIN  
1039 W. HISTORIC MITCHELL ST.  
MILWAUKEE, WI 53204

REVISIONS:

NO.	DATE	BY	DESCRIPTION
1	4/7/2022		CONSTRUCTION SET
2			
3			
4			
5			
6			
7			
8			
9			
10			

LA MACCHIA GROUP PROJECT NUMBER:  
WI-FFB-2104

DATE:  
4/7/2022

SHEET TITLE:  
EXTERIOR DOOR FOR  
MITCHELL STREET HISTORIC  
DISTRICT COA SUBMITTAL

SHEET NUMBER:

COA-1

COPYRIGHT ©  
LA MACCHIA GROUP, LLC.  
All information contained on this drawing  
including, but not limited to design concepts  
and details is the property of La Macchia  
Group, LLC. All ideas documented herein were  
created for this specific project and shall not be  
reused in any form without the written permission  
of La Macchia Group, LLC.