

Item 1 (a & b): Picture of AC units Location



Item 1 (a & b) AC Spec:

4630 Kinnickinnic Ave., Cudahy, Wisconsin 53110  
(414) 481-2727 • [www.affordablehgt.com](http://www.affordablehgt.com)

WHATEVER IT TAKES

1 (a & b): AC Replacement

# AIR CONDITIONERS









Notes: \_\_\_\_\_  
\_\_\_\_\_  
\_\_\_\_\_  
\_\_\_\_\_  
\_\_\_\_\_

BEST	BETTER	GOOD	VALUE
<b>EVOLUTION™</b> <small>SYSTEM</small>	<i>Preferred™</i> <small>SERIES</small>		<b>LEGACY™</b> <small>LINE</small>
189B	126B	123A	113A

Price includes coil, lineset and pad.

PERFORMANCE					
Efficiency SEER	15 - 19	14 - 16.5	13 - 15	13 - 14.5	
Efficiency EER	10 - 13	11.5 - 13.5	11 - 12	10.8 - 11	
Energy Star®		✓	✓		
Puron® Refrigerant	✓	✓	✓	✓	
Multi Stage Compressor	Available up to 5 Stages				
Inverter Compressor	✓	✓	✓	✓	
SOUND					
Quiet Level	As low as 55 dB	As low as 72 dB	As low as 74 dB	As low as 76 dB	
CONTROLS					
Evolution® Control Ready	✓				
PerfectHumidity® Enhancement	✓				
Evolution Diagnostics	✓				
DURABILITY					
DuroGuard™ Plus Protection Package	✓	✓	✓		
Air Conditioner Size (tons)	□ 1.5 □ 2 □ 3 □ 4	□ 1.5 □ 2 □ 2.5 □ 3 □ 3.5 □ 4 □ 5	□ 1.5 □ 2 □ 2.5 □ 3 □ 3.5 □ 4 □ 5	□ 1.5 □ 2 □ 2.5 □ 3 □ 3.5 □ 4 □ 5	
Utility Rebates & Other Programs					

## Item 2: Decorative Termination Cap Spec

Gas Direct Vent   Termination Caps & Shrouds			
	<p>HORIZONTAL VENTING GAS TERMINATION CAP</p> <p><b>Horizontal Termination Cap</b> Use this multi-purpose cap to finish off any Direct Vent gas fireplace or stove. Shrouds are also available to blend with siding materials or for enhanced safety.</p> <p><b>DVP-TRAP1/DVP-TRAP2/SLP-TRAP1/SLP-TRAP2/SLP-HHW2</b></p>		<p>HORIZONTAL VENTING GAS TERMINATION CAP</p> <p><b>FireBrick™ Termination Cap</b> This termination cap is designed to complement distinct stone and stucco exteriors.</p> <p><b>DVP-FBHT</b></p>
	<p>HORIZONTAL VENTING GAS TERMINATION CAP</p> <p><b>High Performance Termination Cap</b> Quickly and easily complete a Direct Vent gas appliance with this cap—and ensure safe venting and exhaust flow in high wind applications.</p> <p><b>DVP-HPC1/DVP-HPC2</b></p>		<p>HORIZONTAL VENTING GAS TERMINATION CAP</p> <p><b>High-Rise Termination Cap</b> This cap is ideal for adverse weather conditions in multi-unit, high-rise buildings.</p> <p><b>SLP-HRC-SS/DVP-HRC-SS</b></p>
	<p>HORIZONTAL VENTING GAS TERMINATION CAP</p> <p><b>Basement Installation Termination Caps</b> Safety vent near ground level with this slender and compact cap.</p> <p><b>DVP-TB1/SLP-TB1/SLK-SNKD (not shown)</b></p>		<p>VERTICAL VENTING GAS TERMINATION CAP</p> <p><b>High Wind Vertical Termination Cap</b> This rugged cap is built to withstand high wind speeds, without sacrificing drafting or safety.</p> <p><b>DVP-TVHW/SLP-TVHW</b></p>
	<p>HORIZONTAL VENTING GAS SHROUD</p> <p><b>Decorative Radius Cover</b> This decorative, paintable shroud easily blends with exterior siding and provides a secondary safety barrier for heated exhaust</p> <p><b>DRC-RADIUS</b> (for use with DVP-TRAP1, DVP-TRAP2, SLP-TRAP1 or SLP-TRAP2)</p>		<p><b>POWER VENT TERMINATION CAPS</b> Fireplaces aren't just for exterior walls. A fan-powered accessory with slim venting can zigzag throughout your home—up, down, over or under—making it possible to install a gas fireplace virtually anywhere.</p> <p><b>Horizontal Termination Cap:</b> <b>PVLP-SLP, PVI-SLP-B</b></p>

Horizontal



Item 2: Pictures of Decorative Cap

Tape Measure is at the 4 ft. wall height in each of the following pictures.







Item 3: Fence Spec

### 3 - Fence Spec

#### OPTIONS:

##### Fence Heights:

- ☐ 4 ft
- ☐ 5 ft
- ☐ 6 ft
- ☐ 7 ft
- ☐ 8 ft

##### Post Option:

- ☐ 2-1/2" sq. 14 ga.
- ☐ 2-1/2" sq. 12 ga.
- ☐ 3" sq. 12 ga.

##### Picket Gauge:

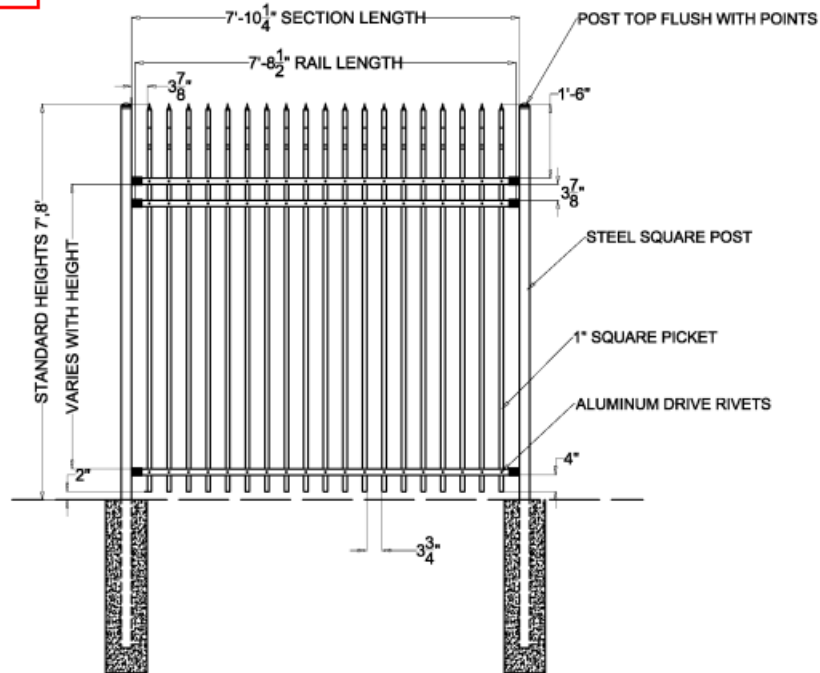
- ☐ 18 gauge
- ☐ 16 gauge
- ☐ 14 gauge

##### Cap Style:

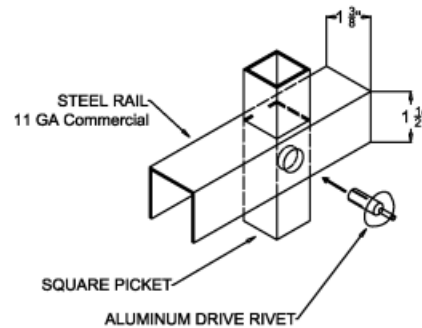
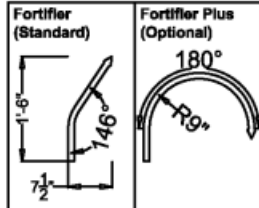
- ☐ Ball Style
- ☐ Flat Style

##### Color:

- ☐ Black (standard)
- ☐ Bronze
- ☐ Green
- ☐ White



#### Sideview



MONUMENTAL IRON WORKS

FORTIFIER - 1" PICKET PANEL

BY: es & swh

DATE: 5/7/18

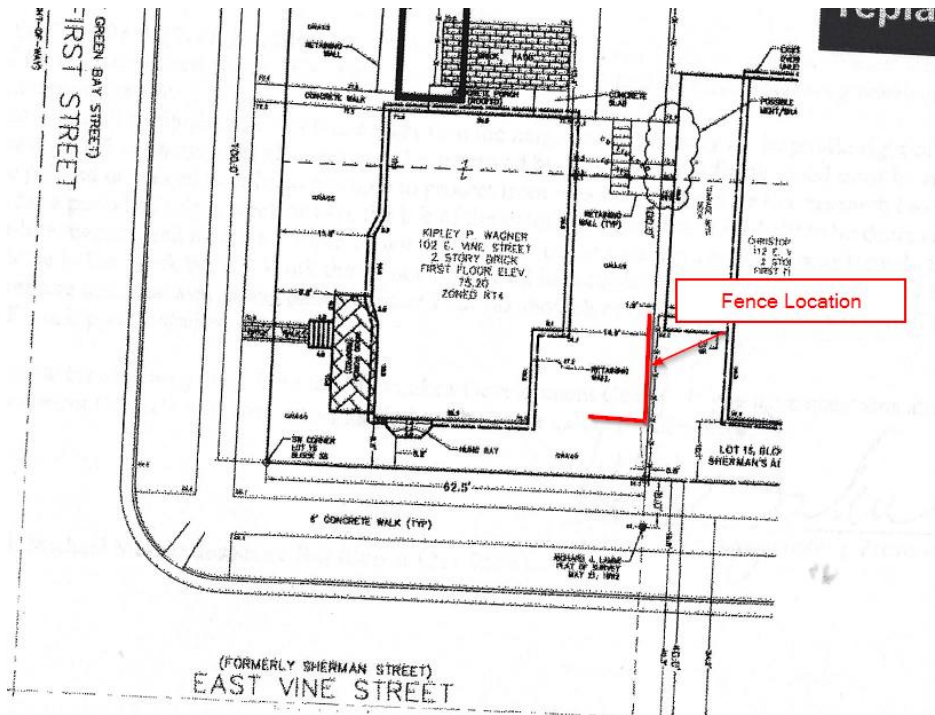
REV:

REV DATE:



Fence Location:

(Note – plat is outdated, and the fence shown on the property line was previously removed by adjacent property owner).



Item 3: Pictures of Approximate Fence and Gate Location

