



West facade



Existing lighted sign to remain

Replace concrete stairs, brick wall, and metal railing with new

Remove existing concrete, landscaping, bench, and sign brackets for new landscaping

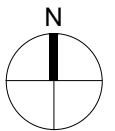
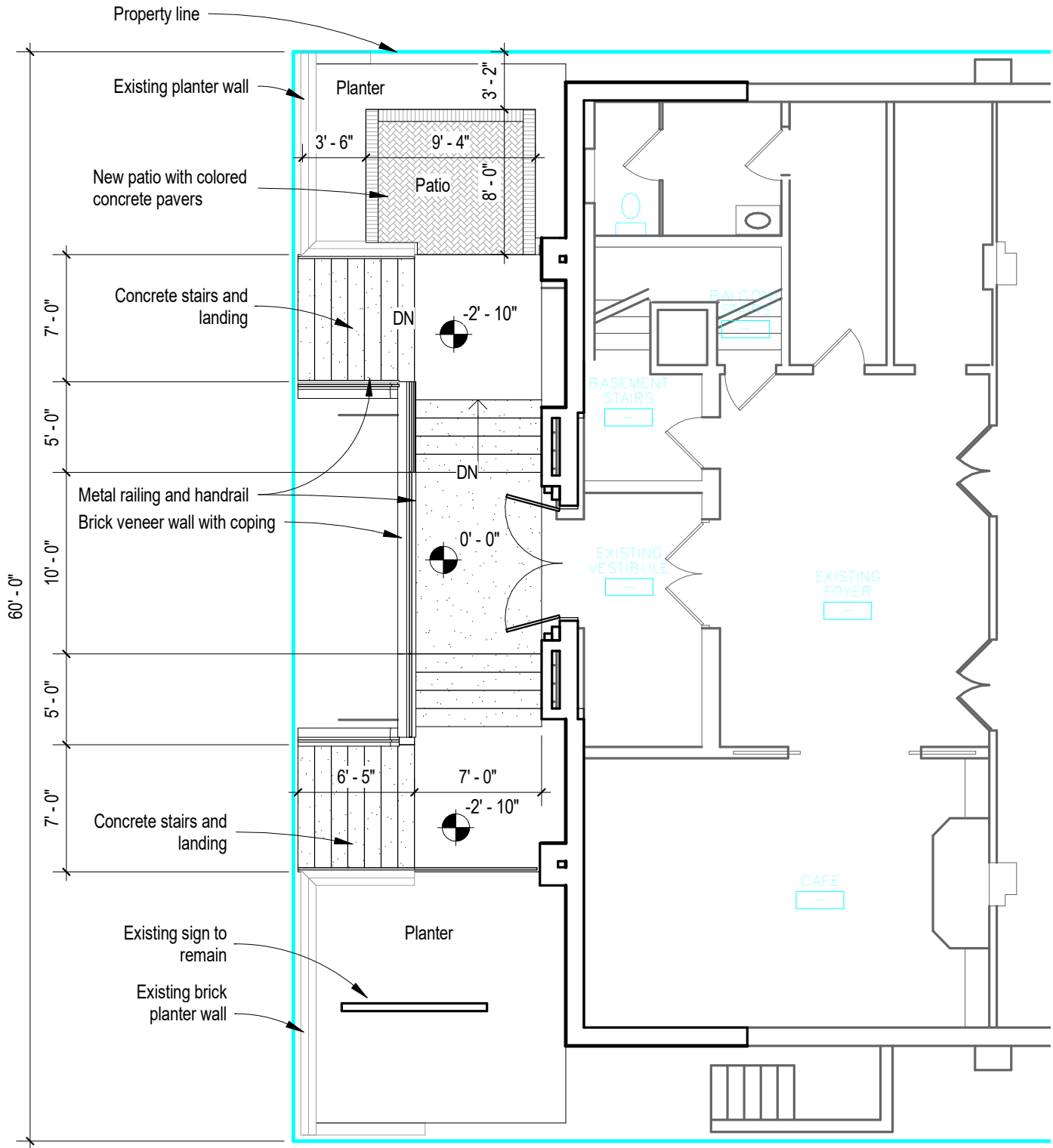
Replace concrete stairs and metal railing with new

Existing Conditions - Front Entrance

BREW CITY CHURCH

1036 N. Van Buren

05/10/22

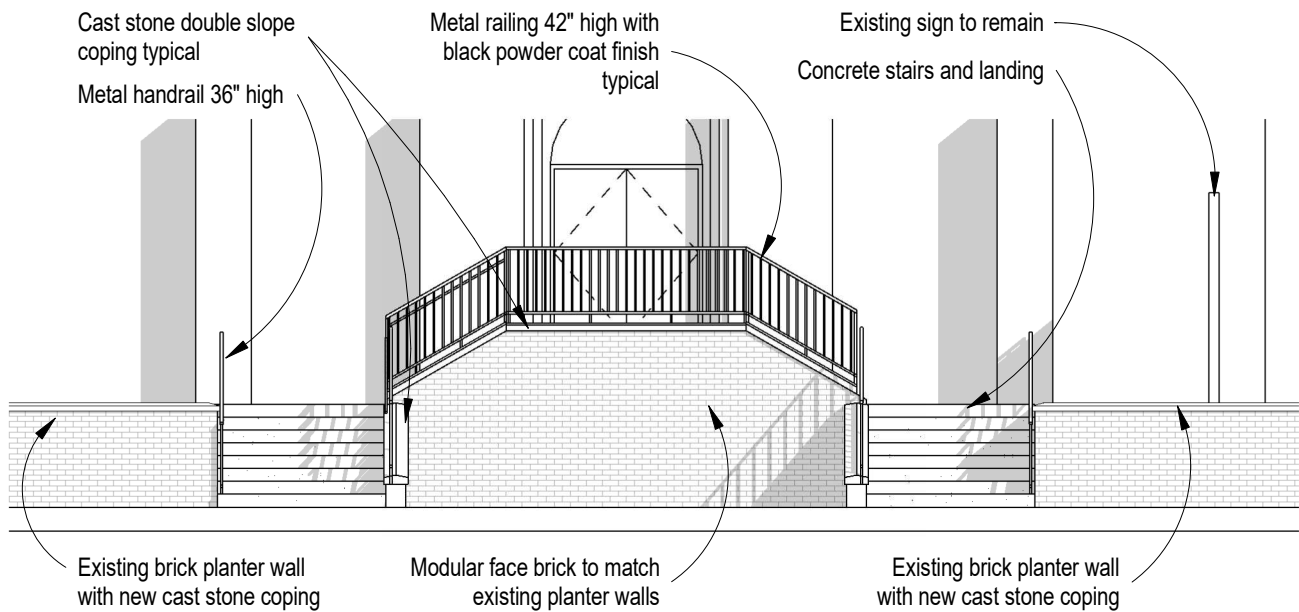


Proposed Plan - 1/8" = 1'-0"

5/10/2022

BREW CITY CHURCH

1036 N. Van Buren



Metal railing:
Top rail 1 1/2" x 3/4" high
3/4" square pickets at 4 1/2" o.c.
1" square posts and bottom rail

Cast stone coping:
4" high with double slope