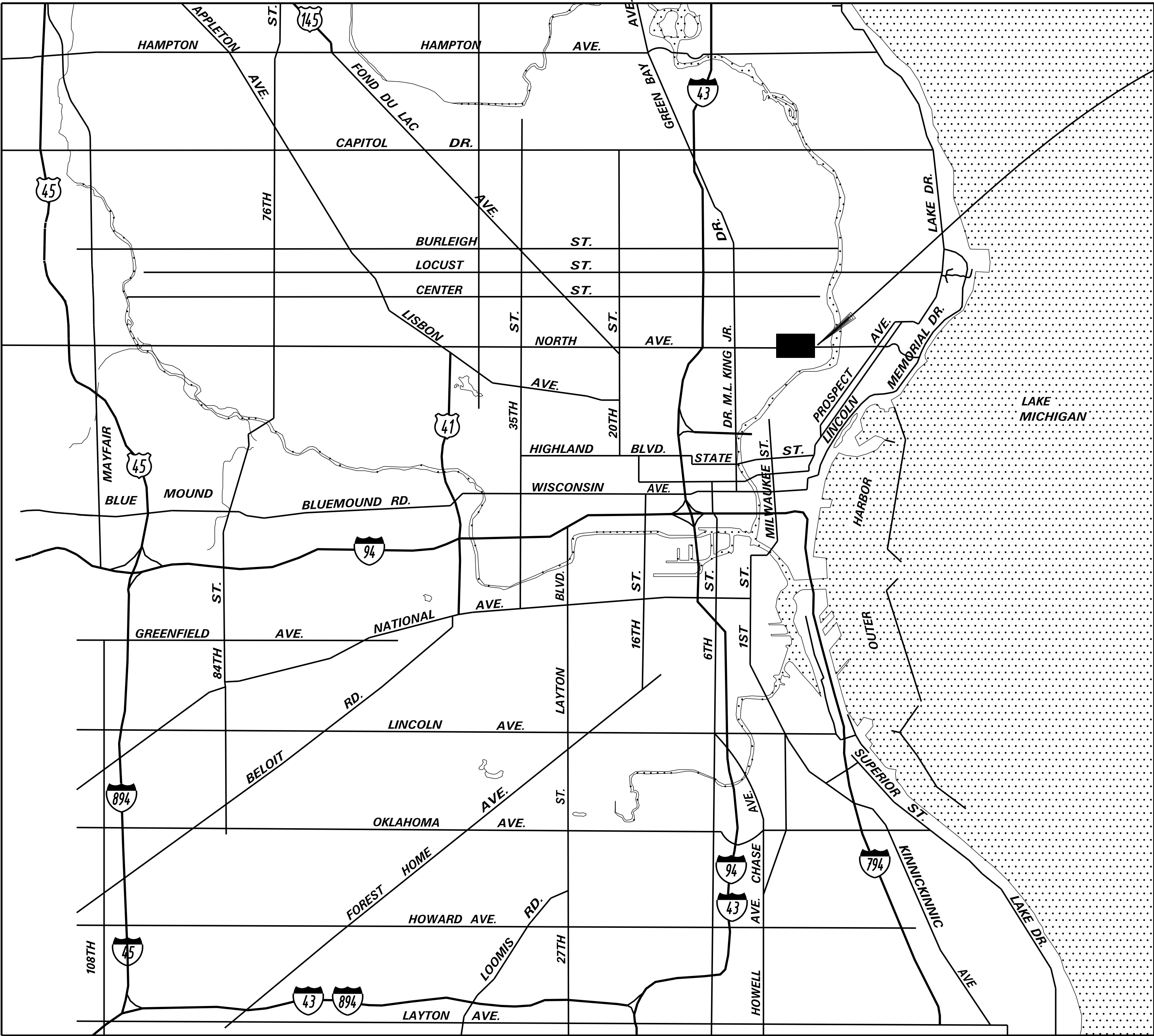


# Milwaukee Water Works

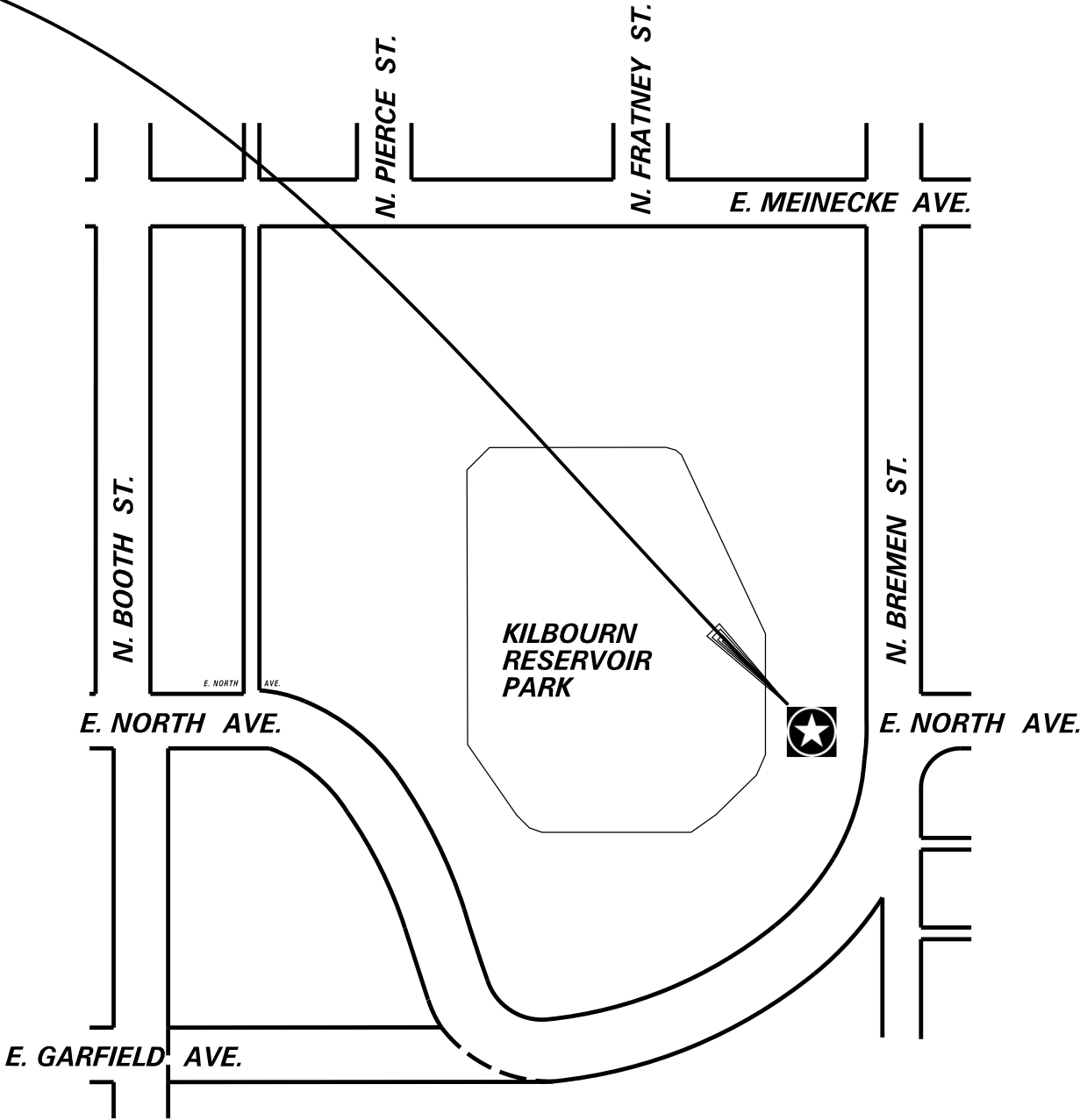
## KILBOURN RESERVOIR PARK

### KP-55 KILBOURN PARK IMPROVEMENTS



MILWAUKEE, WISCONSIN  
VICINITY MAP

PROJECT  
LOCATION



LOCATION MAP

### DRAWING INDEX

GENERAL

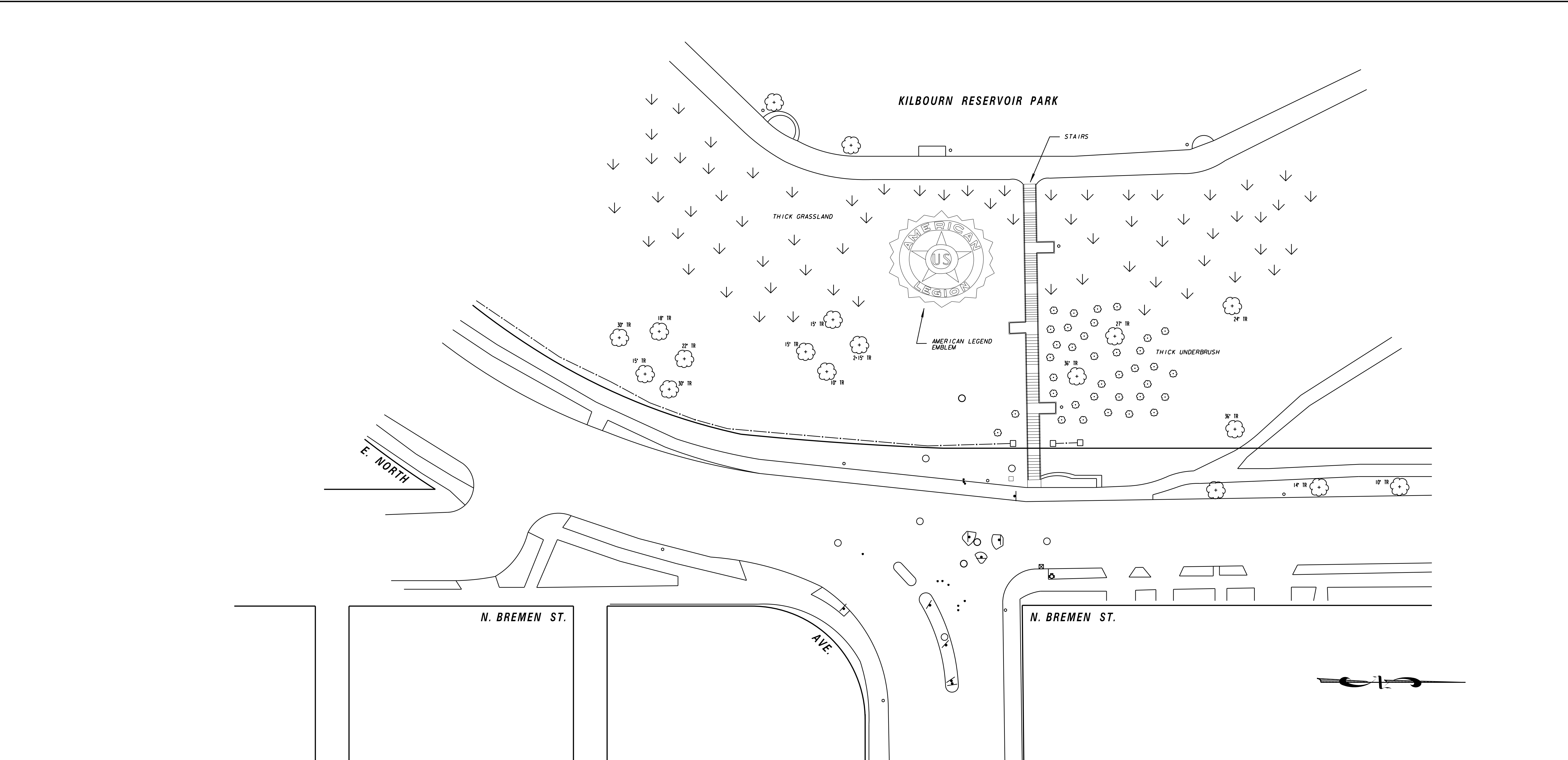
KP-55-G1 TITLE SHEET, LOCATION MAP AND DRAWING INDEX

CIVIL

- KP-55-C1 SITE PLAN
- KP-55-C2 DEMOLITION PLAN
- KP-55-C3 CONSTRUCTION PLAN

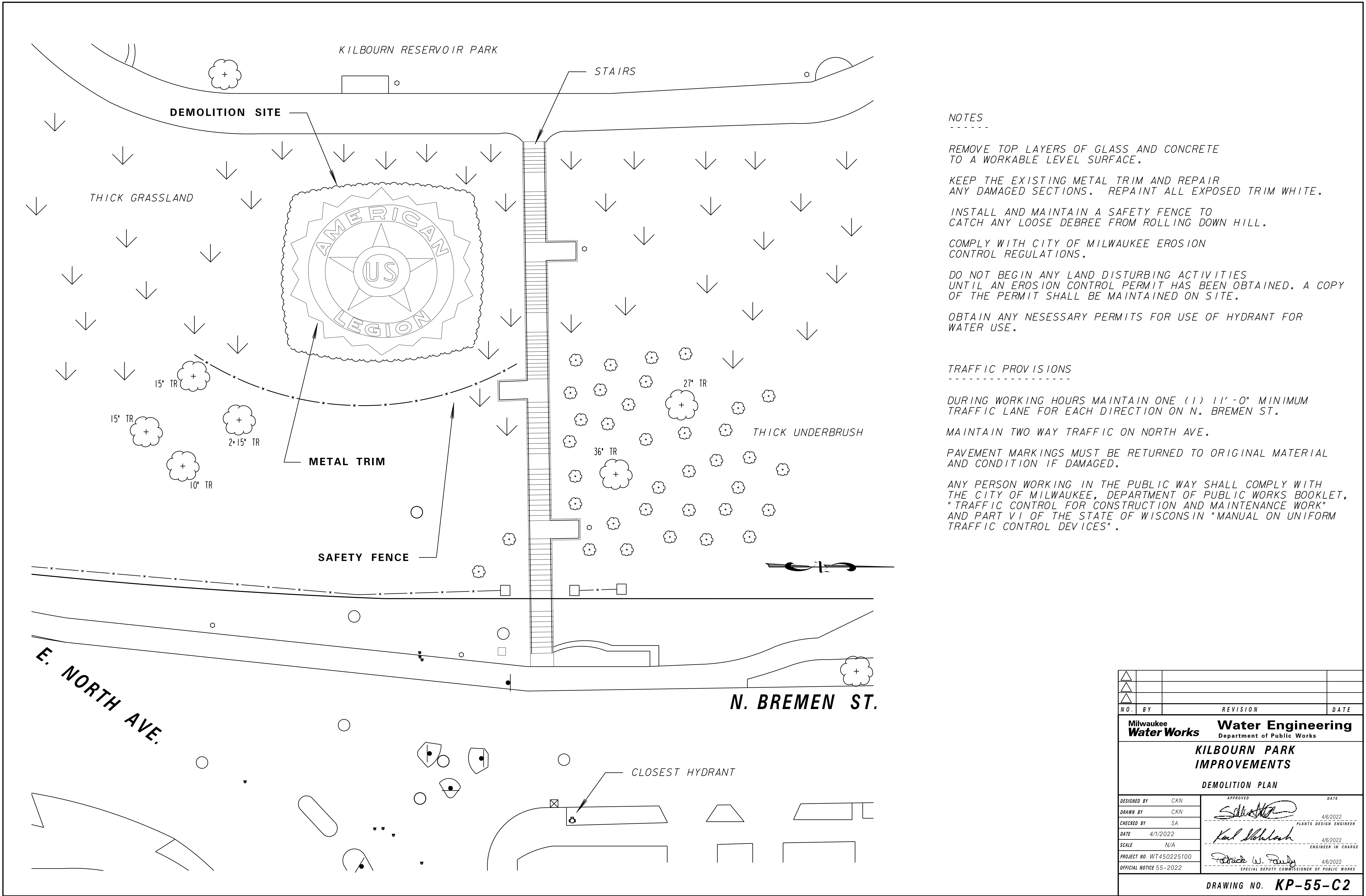


DESIGNED BY	CKN	DATE	
DRAWN BY	CKN	DATE	
CHECKED BY	SA	DATE	
DATE	4/1/2022	DATE	
SCALE	N/A	DATE	
PROJECT NO.	WT450225100	DATE	
OFFICIAL NOTICE	55-2022	DATE	
DRAWING NO. KP-55-G1			



LEGEND	
	LIGHT POLE
	FIRE HYDRANT
	TREE
	GRASSLAND
	STREET SIGN
	FENCE

N.O.	BY	REVISION	DATE		
Milwaukee Water Works		Water Engineering Department of Public Works			
KILBOURN PARK IMPROVEMENTS					
SITE MAP					
DESIGNED BY	CKN	APPROVED	DATE		
DRAWN BY	CKN		4/6/2022		
CHECKED BY	SA	PLANTS DESIGN ENGINEER			
DATE	4/1/2022		4/6/2022		
SCALE	N/A	ENGINEER IN CHARGE			
PROJECT NO.	WT450225100		4/6/2022		
OFFICIAL NOTICE	55-2022	SPECIAL DEPUTY COMMISSIONER OF PUBLIC WORKS			
DRAWING NO. KP-55-C1					

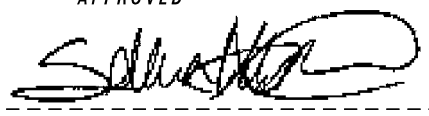




NOTES

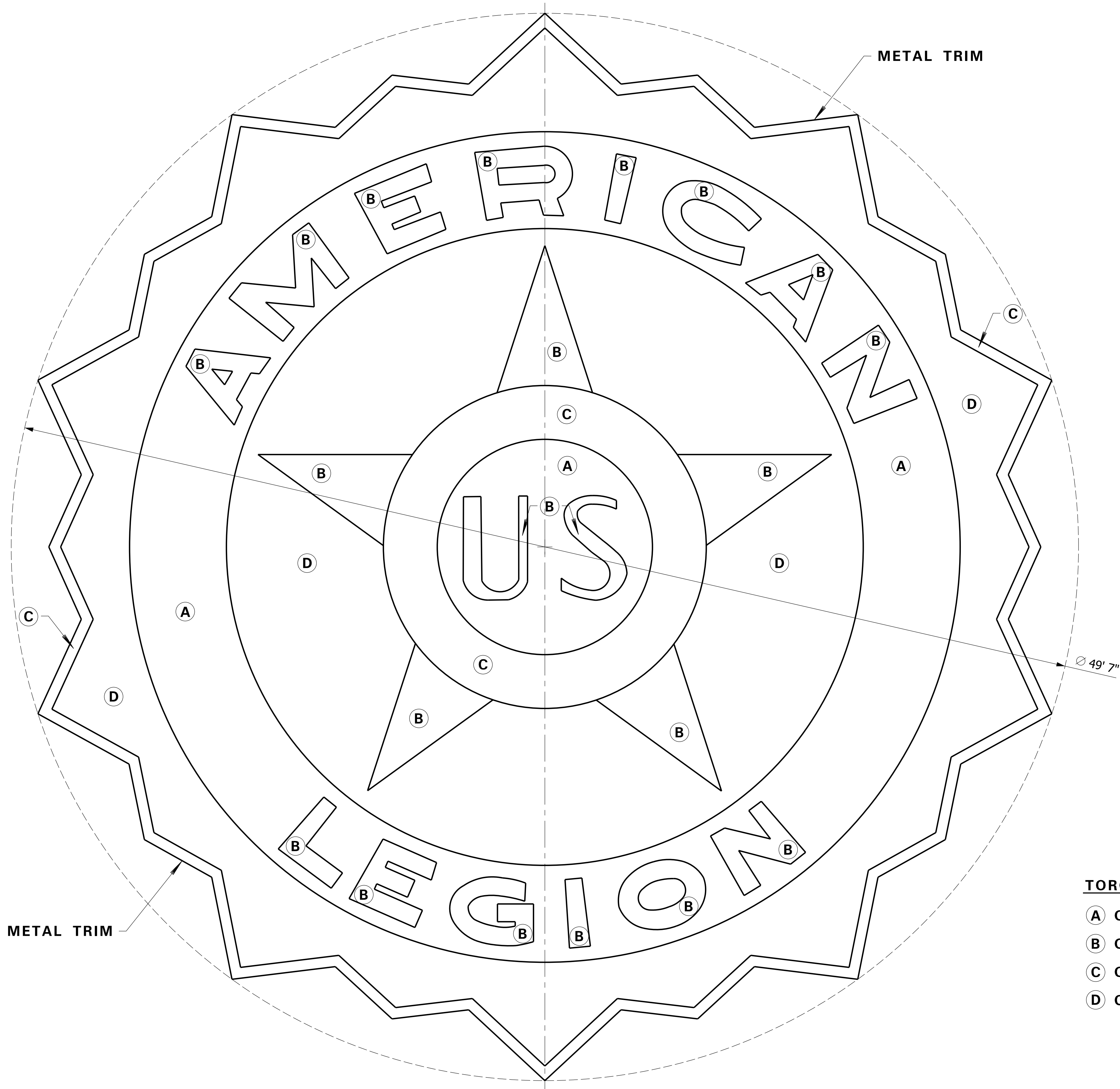
- REMOVE TOP LAYERS OF GLASS AND CONCRETE TO A WORKABLE LEVEL SURFACE.
- KEEP THE EXISTING METAL TRIM AND REPAIR ANY DAMAGED SECTIONS. REPAINT ALL EXPOSED TRIM WHITE.
- INSTALL AND MAINTAIN A SAFETY FENCE TO CATCH ANY LOOSE DEBREE FROM ROLLING DOWN HILL.
- COMPLY WITH CITY OF MILWAUKEE EROSION CONTROL REGULATIONS.
- DO NOT BEGIN ANY LAND DISTURBING ACTIVITIES UNTIL AN EROSION CONTROL PERMIT HAS BEEN OBTAINED. A COPY OF THE PERMIT SHALL BE MAINTAINED ON SITE.
- OBTAIN ANY NECESSARY PERMITS FOR USE OF HYDRANT FOR WATER USE.

TRAFFIC PROVISIONS

- DURING WORKING HOURS MAINTAIN ONE (1) 11'-0" MINIMUM TRAFFIC LANE FOR EACH DIRECTION ON N. BREMEN ST.
- MAINTAIN TWO WAY TRAFFIC ON NORTH AVE.
- PAVEMENT MARKINGS MUST BE RETURNED TO ORIGINAL MATERIAL AND CONDITION IF DAMAGED.
- ANY PERSON WORKING IN THE PUBLIC WAY SHALL COMPLY WITH THE CITY OF MILWAUKEE, DEPARTMENT OF PUBLIC WORKS BOOKLET, "TRAFFIC CONTROL FOR CONSTRUCTION AND MAINTENANCE WORK" AND PART VI OF THE STATE OF WISCONSIN "MANUAL ON UNIFORM TRAFFIC CONTROL DEVICES".

△			
△			
△			
N.O.	BY	REVISION	DATE
Milwaukee Water Works		Water Engineering Department of Public Works	
KILBOURN PARK IMPROVEMENTS			
DEMOLITION PLAN			
DESIGNED BY	CKN	APPROVED	DATE
DRAWN BY	CKN		4/6/2022
CHECKED BY	SA		4/6/2022
DATE	4/1/2022		4/6/2022
SCALE	N/A	ENGINEER IN CHARGE	
PROJECT NO.	WT450225100	SPECIAL DEPUTY COMMISSIONER OF PUBLIC WORKS	
OFFICIAL NOTICE	55-2022		
DRAWING NO. KP-55-C2			





NOTES

FILL TRIM WITH CONCRETE TO A LEVEL, WORKABLE  
BASE LEAVING ENOUGH ROOM FOR QUARTZ TOP FINISH.

USE TORGINOL QUARTZ 25-A GRADE IN THE COLORS  
INDICATED ON THIS SHEET OR APPROVED EQUIVALENT PRODUCTS.

APPLY QUARTZ SYSTEM WITH RECOMMENDED BONDING AGENTS,  
PRIMERS, SEALERS, BASE COATS AND TOP COATS AS PER  
MANUFACTURER'S INSTRUCTIONS FOR UV-STABLE AND WEATHERPROOF  
COLORED QUARTZ FINISH.

REPLACE ANY DISTURBED VEGETATION, DAMAGED FENCING OR  
DAMAGED CONCRETE AFTER CONSTRUCTION TO ORIGINAL  
CONDITION PRIOR TO CONSTRUCTION.

TORGINOL QUARTZ

- A Q1110 - BLUE
- B Q1710 - YELLOW
- C Q1610 - RED
- D Q1430 - RAINFOREST

△			
△			
△			
N.O.	BY	REVISION	DATE
Milwaukee Water Works Water Engineering Department of Public Works			
KILBOURN PARK IMPROVEMENTS			
CONSTRUCTION PLAN			
DESIGNED BY	CKN	APPROVED	DATE
DRAWN BY	CKN		4/6/2022
CHECKED BY	SA		PLANTS DESIGN ENGINEER
DATE	4/1/2022		4/6/2022
SCALE	N/A		ENGINEER IN CHARGE
PROJECT NO.	WT450225100		4/6/2022
OFFICIAL NOTICE	55-2022		SPECIAL DEPUTY COMMISSIONER OF PUBLIC WORKS
DRAWING NO. KP-55-C3			