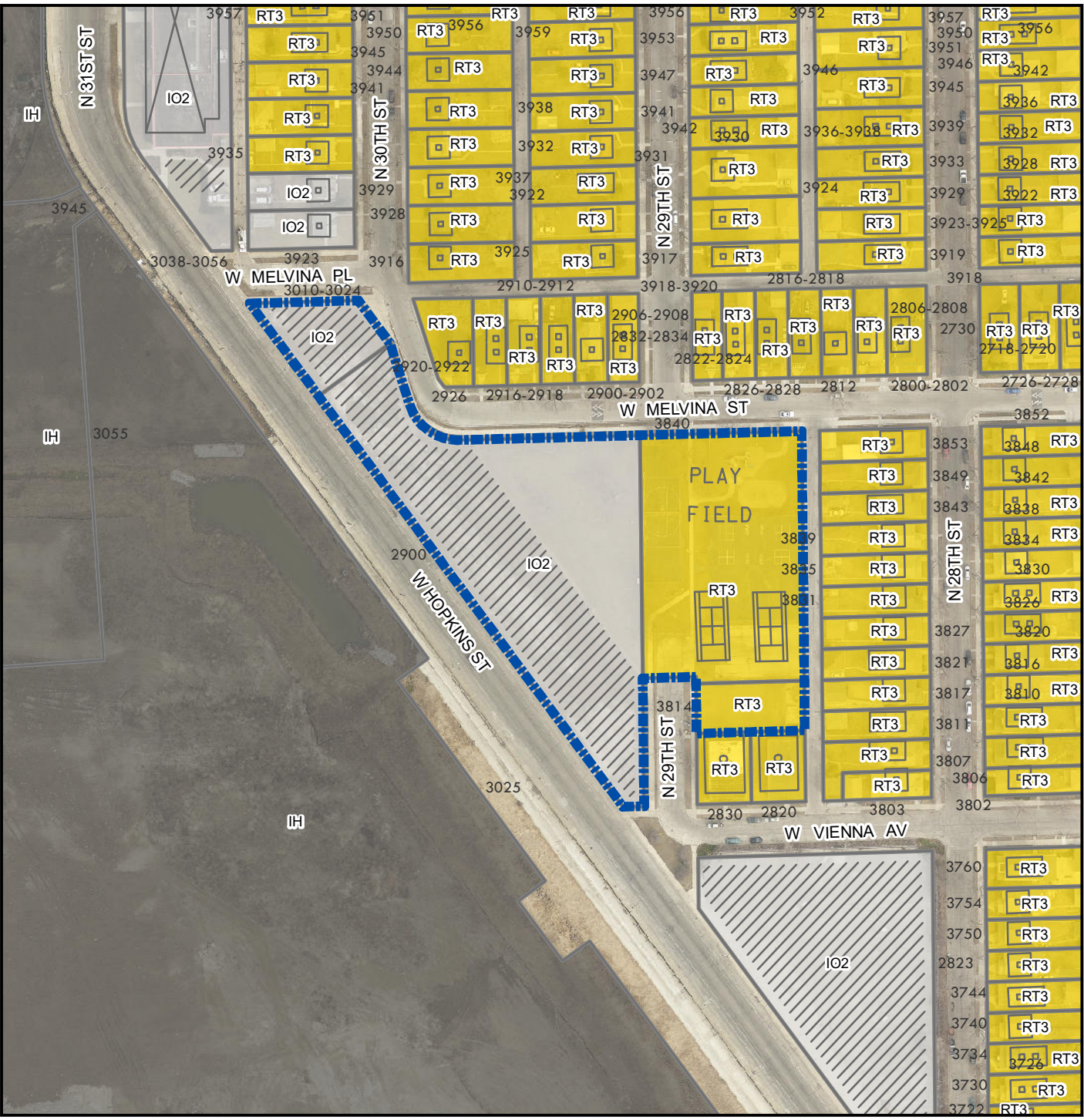


**File No. 211865**  
**3814 and 3840 N. 29th St**  
**& 2900 and 3010 W. Hopkins St**  
**IO2 and RT3 to PK**



**Legend**

- Zoning Change Boundary
- Zoning**
- Unknown or pending zone
- Zoning Category**
- Residential - single family
- Residential - two family
- Residential - multi-family
- Residential - residence and office
- Central business district - civic activity
- Central business district - high-density residential
- Central business district - major retail
- Central business district - mixed activity
- Central business district - neighborhood retail
- Central business district - office and service
- Central business district - residential and specialty use
- Central business district - warehousing and light manufacturing
- Commercial - neighborhood shopping
- Commercial - local business
- Commercial - commercial service
- Commercial - regional business
- Industrial - commercial
- Industrial - office
- Industrial - light
- Industrial - mixed
- Industrial - heavy
- Special - parks
- Special - institutional
- Special - planned development
- Special - redevelopment district

