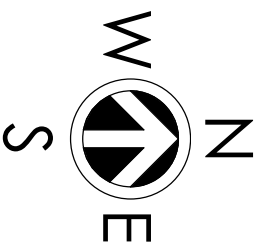


4/14/2022

# KNAPP ST. COFFEE

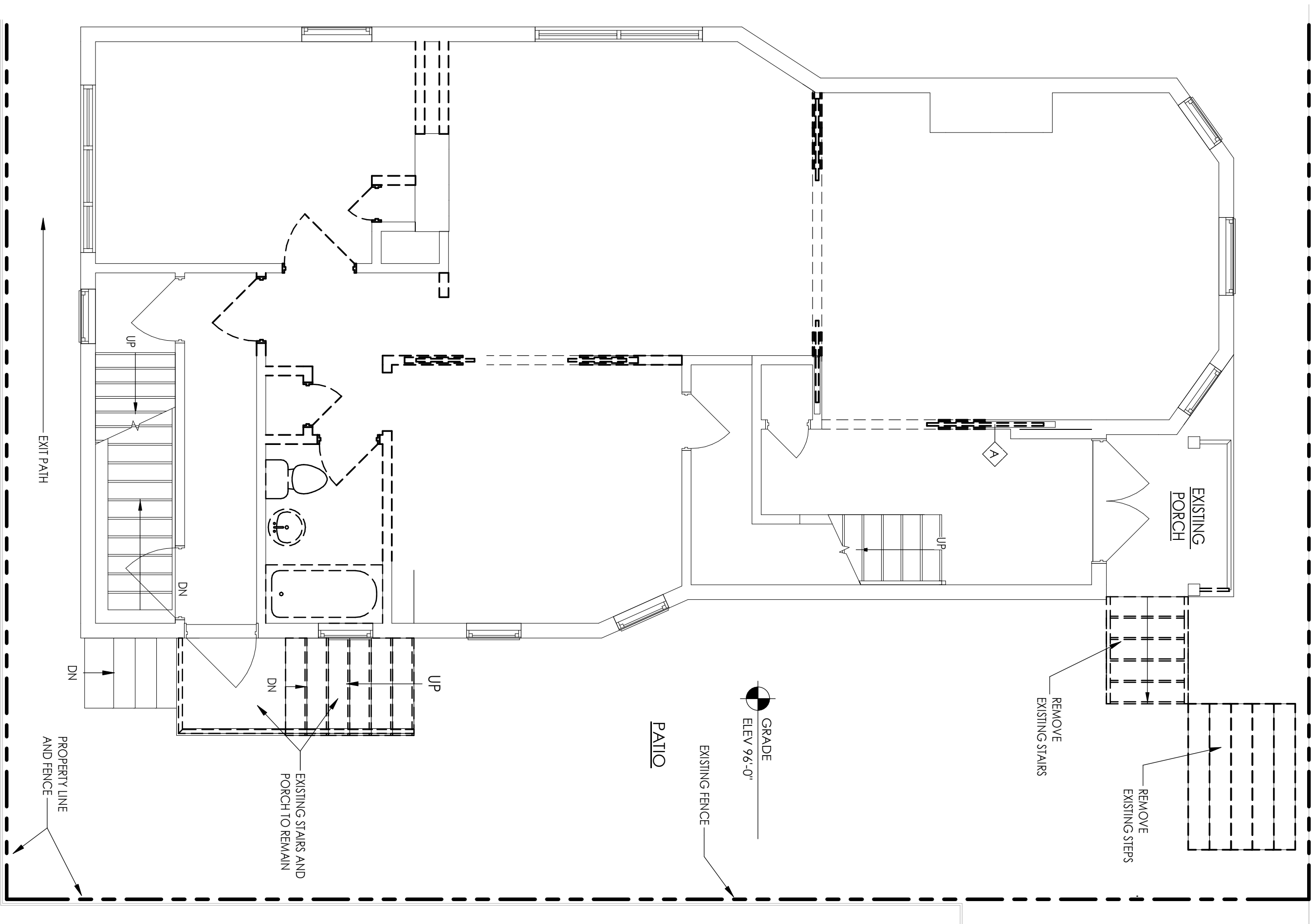
1119 E KNAPP ST., MILWAUKEE WI 53202

PROJ. NO. 2021-44



Abacus Architects, Inc. holds all rights of copyright in and to these prints, drawings and documents. No reproduction, copying, alteration, modification, usage, incorporation into other documents, or assignment of the same may occur without the prior written permission of Abacus Architects, Inc.

SIDE WALK  
ELEV. 93'-4"



GRADE  
ELEV 96'-0"

PATIO

EXISTING FENCE

EXISTING  
PORCH

REMOVE  
EXISTING STEPS

REMOVE  
EXISTING STAIRS

EXISTING STAIRS AND  
PORCH TO REMAIN

EXIT PATH

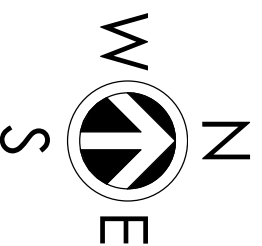
PROPERTY LINE  
AND FENCE

4/14/2022

KNAPP ST. COFFEE

1119 E KNAPP ST., MILWAUKEE WI 53202

PROJ. NO. 2021-44



Abacus Architects, Inc. holds all rights of copyright in and to these prints, drawings and documents. No reproduction, copying, alteration, modification, usage, incorporation into other documents, or assignment of the same may occur without the prior written permission of Abacus Architects, Inc.

© 2021 Abacus Architects, Inc.

**ABACUS**  
ARCHITECTS