



# Certificate of Appropriateness

Milwaukee Historic Preservation Commission/200 E. Wells Street/Milwaukee, WI 53202/phone 414-286-5712/fax 414-286-3004

**Property** 790 N. VAN BUREN ST. Scottish Rite Consistory  
**Description of work** New rooftop staircases and balconies  
**Date issued** 12/23/2021 PTS ID 115210 COA: ROOFTOP STAIRCASE PENTHOUSE

In accordance with the provisions of Section 320-21 (11) and (12) of the Milwaukee Code of Ordinances, the Milwaukee Historic Preservation Commission has issued a certificate of appropriateness for the work listed above. The work was found to be consistent with preservation guidelines. The following conditions apply to this certificate of appropriateness:

1. Nichiha Tuff Block, Tuscan color cladding for rooftop extensions.
2. Railings may be changed upon further consultation with HPC staff.

All work must be done in a craftsman-like manner and must be completed within one year of the date this certificate was issued. Staff must approve any changes or additions to this certificate before work begins. Work that is not completed in accordance with this certificate may be subject to correction orders or citations. If you require technical assistance, please contact [hpc@milwaukee.gov](mailto:hpc@milwaukee.gov).

If permits are required, you are responsible for obtaining them from the Milwaukee Development Center. If you have questions about permit requirements, please consult the Development Center's web site, [www.milwaukee.gov/build](http://www.milwaukee.gov/build), or call (414) 286-8210.

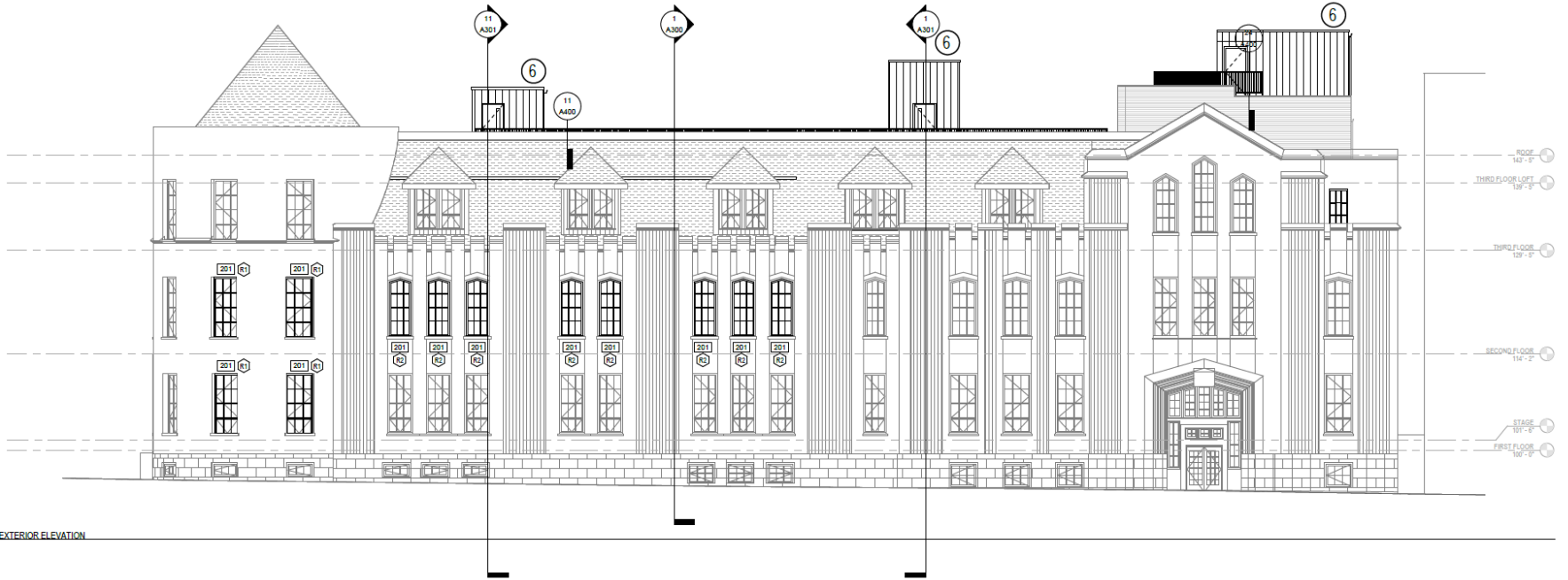
City of Milwaukee Historic Preservation Staff

Copies to: Development Center, Ald. Robert Bauman, Contractor



6 NORTH EXTERIOR ELEVATION  
 A200 SCALE: 1/8" = 1'-0"

6 ROOFTOP STAIR/ELEVATOR EXTENSIONS FOR ROOF ACCESS



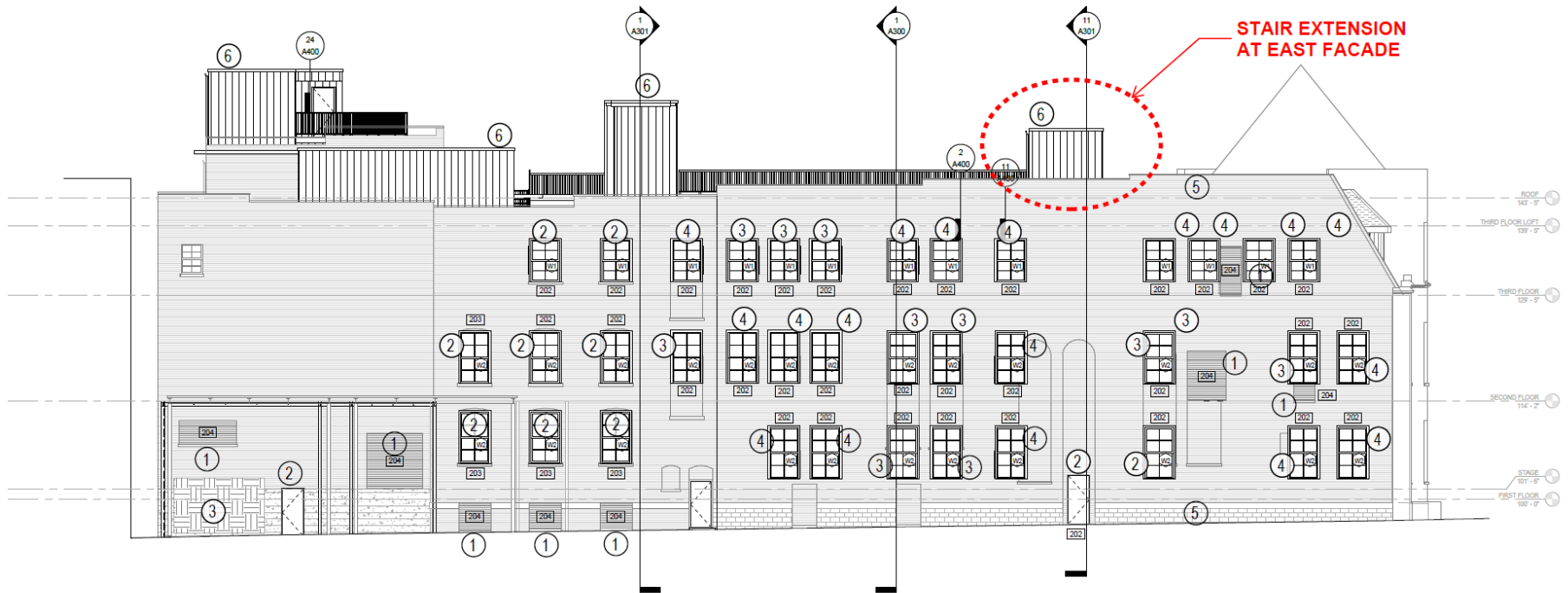
3 WEST EXTERIOR ELEVATION

Title

WEST ELEVATION

6 ROOFTOP STAIR/ELEVATOR EXTENSIONS FOR ROOF ACCESS

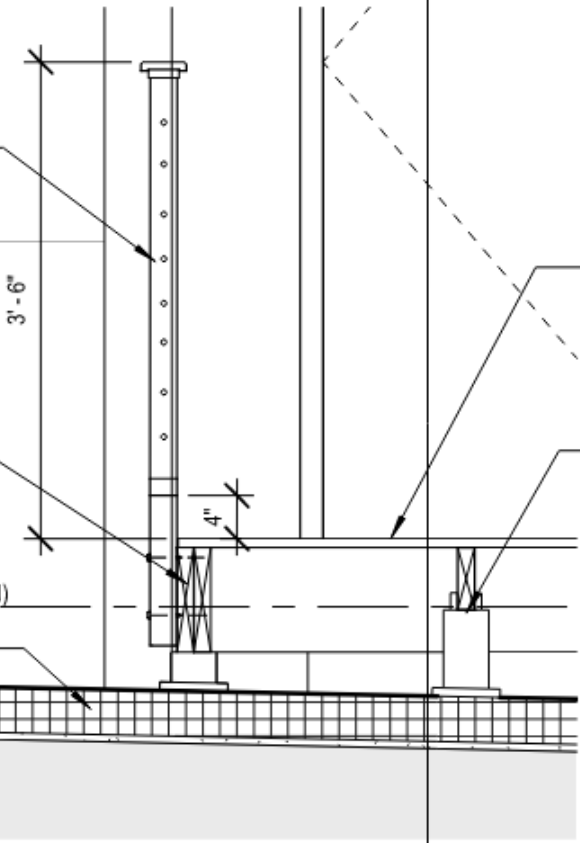
Scale: NA



4 EAST EXTERIOR ELEVATION  
A301 SCALE: 1/8" = 1'-0"

11  
A301

FASCIA MOUNTED ALUMINUM  
CABLE RAIL SYSTEM  
CABLES AT 4" O.C. MAX. SPACING



1X WOOD TILE SECTIONS FOR  
PEDESTAL SUPPORT SYSTEM

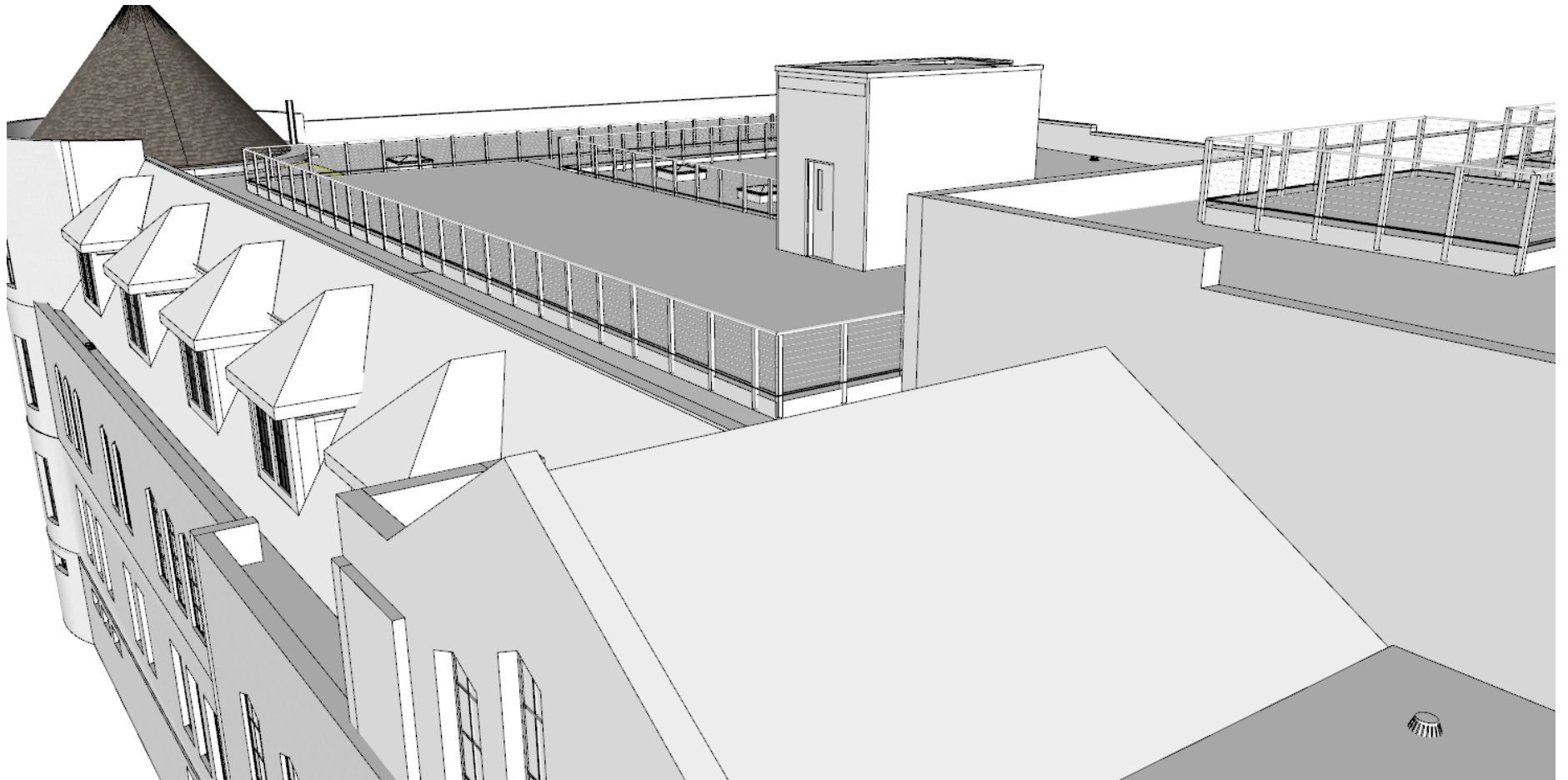
(2) 2X10 RIM JOIST EDGE SUPPORT  
ON PEDESTAL SUPPORT SYSTEM

PEDESTAL SUPPORT SYSTEM  
AT 24" O.C. MAX

NEW ROOF ASSEMBLY 1 (SEE ROOF PLAN)  
ON EXISTING WOOD FRAMED ROOF  
STRUCTURE

2  
A301

DETAIL - SECTION AT ROOF DECK RAIL  
SCALE: 3/4" = 1'-0"





TUSCAN



Sample of approved cladding material. Color and texture at left. General form and size at right.