

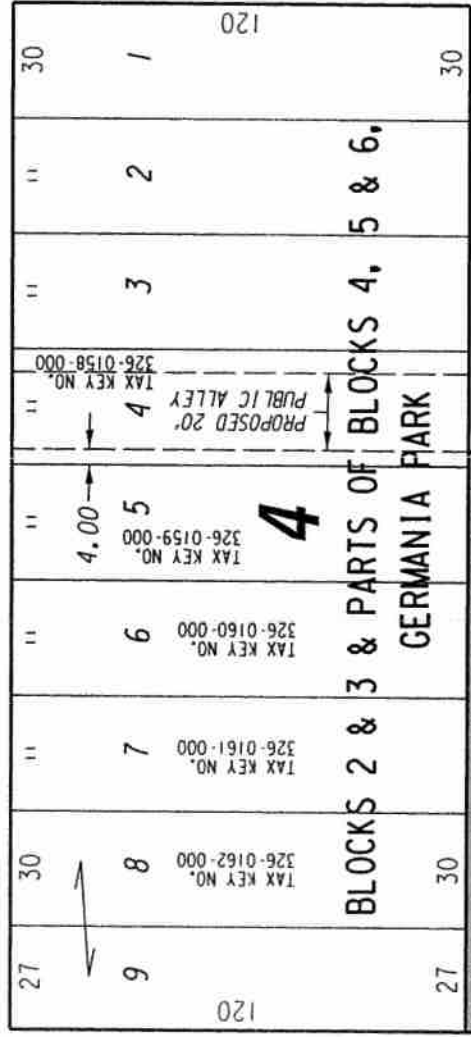
326

S.E. 1/4 SEC. 13, T.7N., R.2E.

W. Clarke St.

(60' R.O.W.)

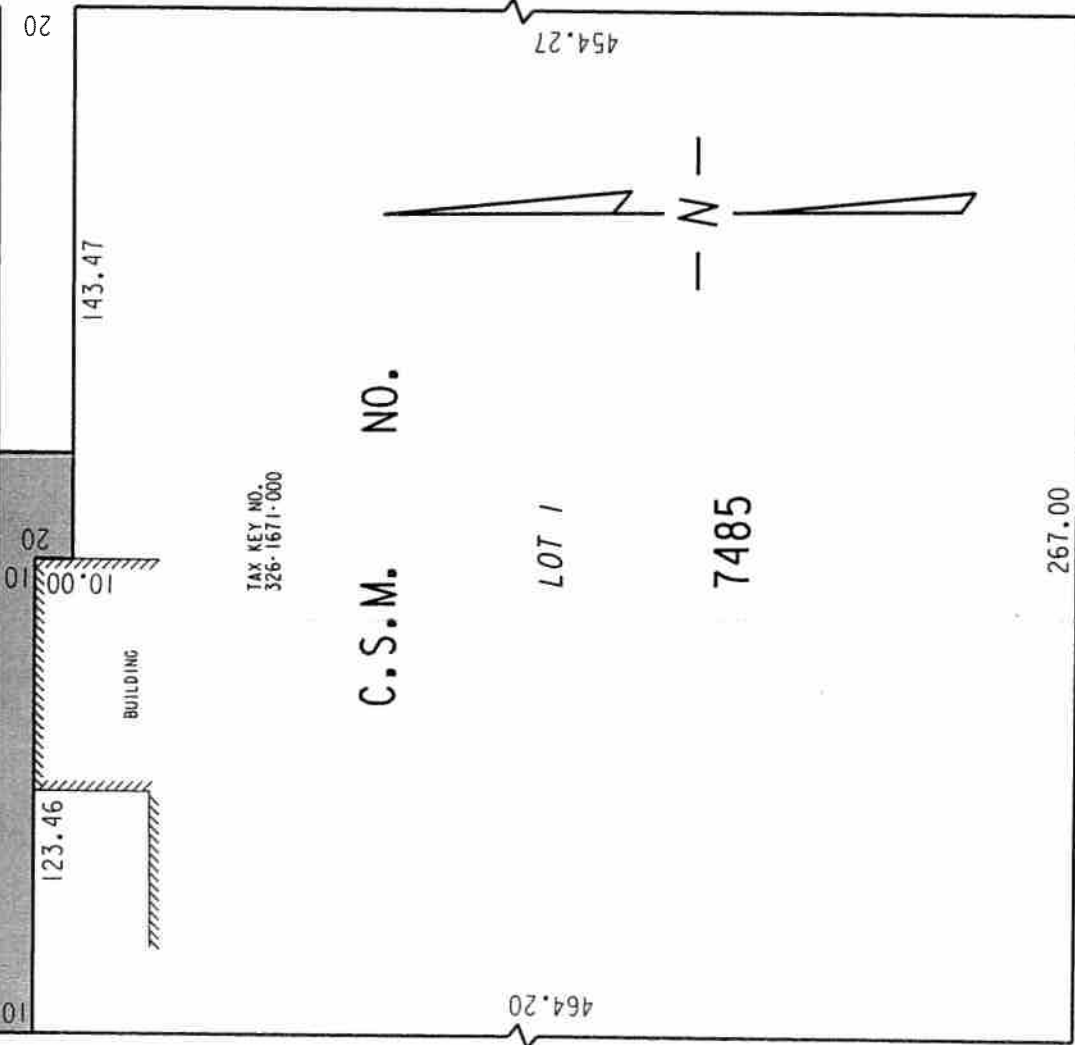
St.



St.

St.

BLOCKS 2 & 3 & PARTS OF BLOCKS 4, 5 & 6, GERMANIA PARK



(60' R.O.W.)

(60' R.O.W.)

C.S.M. NO.

LOT 1

7485

N. 30th

N. 29th

W. Wright St.

(60' R.O.W.)

St.

PORTION OF PUBLIC ALLEY PROPOSED TO BE VACATED



EXHIBIT "A"

FILE NO. 100360

INFRASTRUCTURE SERVICES DIVISION

MILWAUKEE, WISCONSIN

ASSIGNED TO: W.E. FUCHS

CH'K'D. BY: W.E. FUCHS

DRAWN BY: W.E.F.

DATE: AUG. 16, 2010

PROJECT/GRANT NO.: WK52337294

SCALE: 1" = 50'

APPROVED BY:

Marcia Cornell
CENTRAL DRAFTING & RECORDS MANAGER

Jeffrey S. Palmske
CITY ENGINEER