



Certificate of Appropriateness

Milwaukee Historic Preservation Commission/200 E. Wells Street/Milwaukee, WI 53202/phone 414-286-5712/fax 414-286-3004

Property 2652 N. LAKE DR. NORTH POINT NORTH HD
Description of work RESTORE KITCHEN WINDOWS TO NEW 3-PIECE ALL-WOOD, NON-CLAD CASEMENT WINDOWS (FIXED CENTER WINDOW). INSTALL NEW KITCHEN HOOD VENT THROUGH WALL. PAINT TO MATCH SURROUNDING MATERIALS.
Date issued 11/29/2021 PTS ID 115222 COA: KITCHEN REMODEL

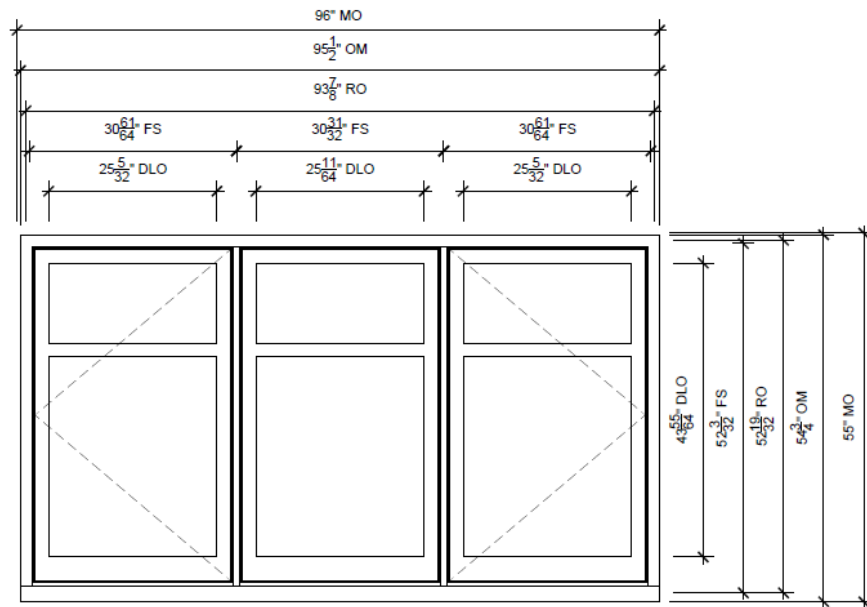
In accordance with the provisions of Section 320-21 (11) and (12) of the Milwaukee Code of Ordinances, the Milwaukee Historic Preservation Commission has issued a certificate of appropriateness for the work listed above. The work was found to be consistent with preservation guidelines. The following conditions apply to this certificate of appropriateness:

All work must be done in a craftsman-like manner, and must be completed within one year of the date this certificate was issued. Staff must approve any changes or additions to this certificate before work begins. Work that is not completed in accordance with this certificate may be subject to correction orders or citations. If you require technical assistance, please contact Dean Doerrfeld of the Historic Preservation staff as follows: Phone: (414) 286-5712 E-mail: Dean.Doerrfeld@milwaukee.gov.

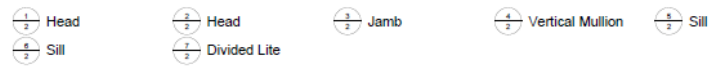
If permits are required, you are responsible for obtaining them from the Milwaukee Development Center. If you have questions about permit requirements, please consult the Development Center's web site, www.milwaukee.gov/build, or call (414) 286-8210.

City of Milwaukee Historic Preservation Staff

Copies to: Development Center, Ald. Nik Kovac, Contractor, Inspector Paul Wolfgramm (286-2590)



01
SCALE: 3/4" = 1'-0"



Primed Pine Exterior
 Painted Interior Finish - White - Pine Interior
 3W1H - Rectangle Assembly
 Assembly Rough Opening w/ Subsill
 93 7/8" X 52 19/32"

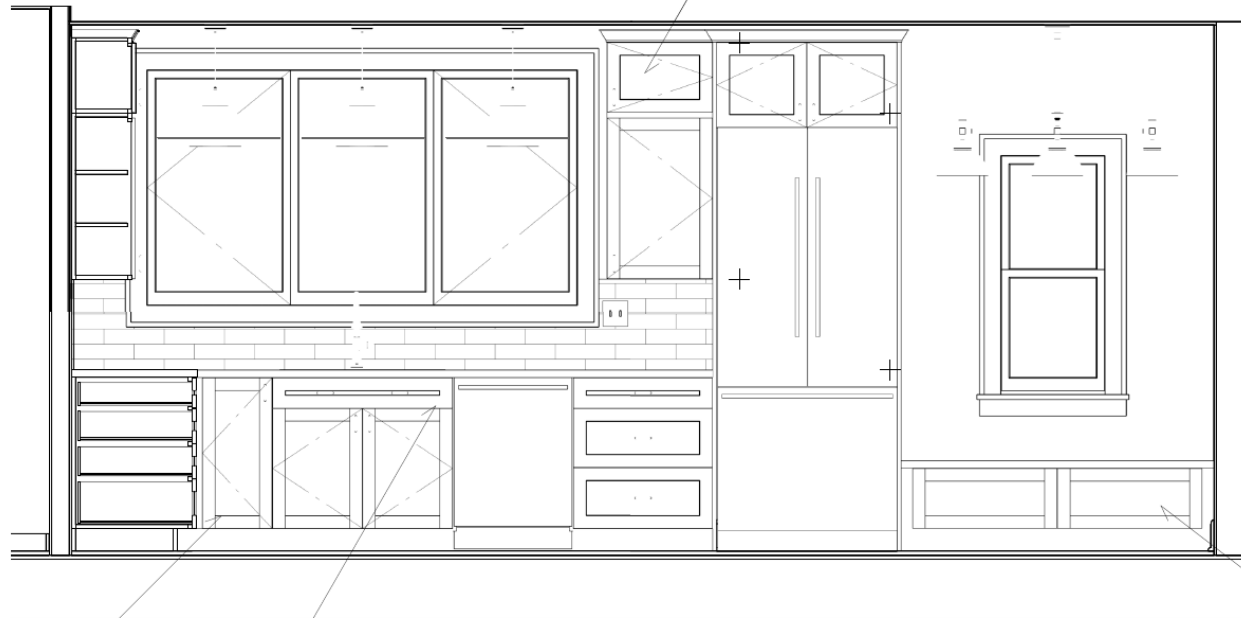
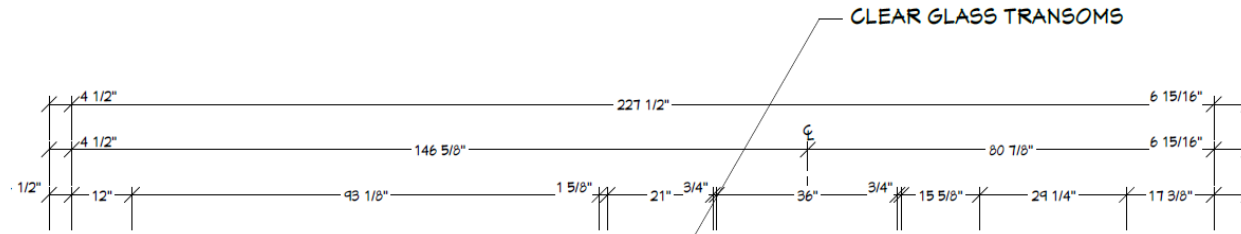
Unit: A1
 Ultimate Wood Casement - Left Hand
 Basic Frame 30 61/64" X 51 5/32"
 Rough Opening w/ Subsill
 31 61/64" X 52 19/32"
 Primed Pine Sash Exterior
 Painted Interior Finish - White - Pine Sash Interior
 IG - 3/4"
 Low E2 w/Argon
 Black Perimeter and Spacer Bar
 1 15/16" SDL - With Spacer Bar - Black
 Cottage - Special Cut 1W1H
 2 Rect Lites
 12" DLO Height
 Primed Pine Ext - Painted Interior Finish - White - Pine Int
 Ogee Interior Glazing Profile
 Tall Bottom Rail
 Black Weather Strip
 Oil Rubbed Bronze Folding Handle
 ***Handles/Covers Ship Loose
 Oil Rubbed Bronze Multi - Point Lock
 Interior Wood Screen
 Bright View Mesh
 Painted Interior Finish - White - Pine
 Ogee Interior Screen Profile
 ***Screen/Combo Ship Loose



Original elevation



Existing

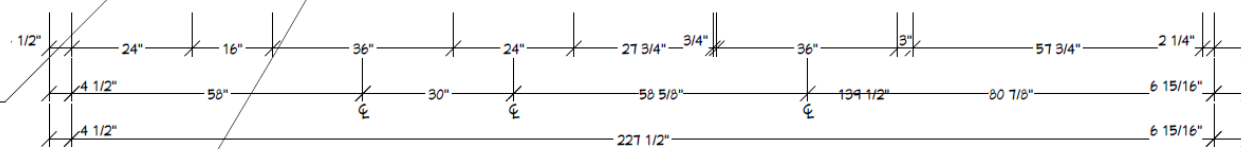


CLEAR GLASS TRANSOMS

BENCH SEATING WITH DRAWERS

LAZY SUSAN
(3) ROTATING SHELVES

SINK BASE WITH
TILT OUT TRAY



E1: NORTH ELEVATION
1/2" = 1'

Proposed Interior elevation