

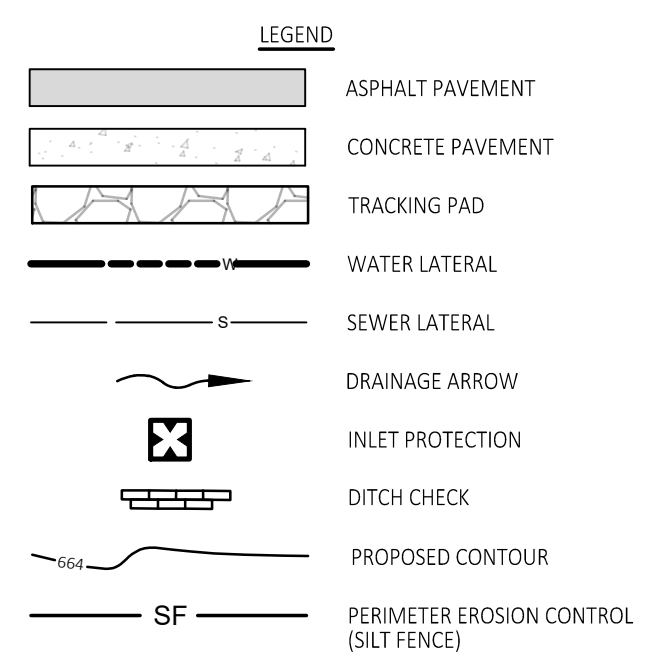
MAINTENANCE PLAN

1. ALL EROSION AND SEDIMENT CONTROL PRACTICES WILL BE INSPECTED FOR FUNCTIONAL EFFECTIVENESS FOLLOWING EVERY 1/2-INCH RAIN EVENT AND IN NO CASE LESS THAN ONCE PER WEEK. ANY NEEDED REPAIRS WILL BE MADE IMMEDIATELY TO ENSURE THE DEVICE FUNCTIONS AS DESIGNED.
2. ALL SEEDED AREAS WILL BE WATERED, FERTILIZED, MULCHED AND RE-SEED AS NECESSARY TO MAINTAIN A WOOROUS, DENSE VEGETATIVE COVER.
3. ANY SEDIMENT REACHING A PUBLIC OR PRIVATE STREET SHALL BE REMOVED BY STREET CLEANING BEFORE THE END OF EACH DAY OR AS NECESSARY TO PREVENT DEBRIS FROM ENTERING A STORM SEWER, DITCH, OR WATERWAY.
4. IN THE EVENT CONSTRUCTION ACTIVITIES RESULT IN SEVERE DUST CONDITIONS, SEE WORN TECHNICAL STANDARD 1008.
5. IN THE EVENT OF DEMATERING ACTIVITIES, FOLLOW WORN TECHNICAL STANDARD 1001. ALL WATER DISCHARGED FROM THE DEMATERING EQUIPMENT MUST BE FILTERED BY A TYPE 1 GLOTTABLE BAG SIZED FOR THE PUMP DISCHARGE FLOW RATE.
6. ALL EXPOSED SOIL AREAS NOT DISTURBED FOR UP TO SEVEN DAYS MUST BE IMMEDIATELY STABILIZED OR PERMANENTLY RESTORED IN ACCORDANCE WITH THE WORN BMP'S.
7. TEMPORARY STABILIZATION MATERIALS SHALL BE MULCHED AND SHALL BE APPLIED AND ANCHORED AS SPECIFIED IN W DNR TECHNICAL STANDARD 1008. FOR AREAS NOT STABILIZED BY OCT. 15, APPLY TEMPORARY SEEDING WITH ANCHOR POLYPROPYLENE AS SPECIFIED IN W DNR TECHNICAL STANDARD 1008 & 1009.
8. ALL SIGNIFICANT CHANGES TO THIS SCHEDULE SHALL BE PROVIDED TO THE WORN AND LOCAL MUNICIPALITY PRIOR TO DEVIATION.
9. IT IS THE CONTRACTOR'S RESPONSIBILITY TO MAINTAIN POSITIVE DRAINAGE TO THE SEDIMENT CONTROL DEVICES AT ALL TIMES DURING CONSTRUCTION.
10. ALL EROSION CONTROL BMP DEVICES CAN BE REMOVED ONCE 100% OF THE SITE HAS BEEN VEGETATED TO 70% COVERAGE PER WORN TECHNICAL STANDARDS.
11. ALL EXPOSED SOIL AREAS NOT DISTURBED FOR UP TO 7 DAYS MUST BE IMMEDIATELY RESTORED WITH SEED AND MULCH.

CONSTRUCTION ACTIVITY AND SEQUENCE

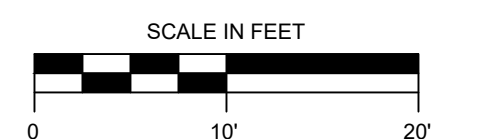
- SITE CONSTRUCTION: DECEMBER 2023
1. OBTAIN PLAN APPROVALS AND APPLICABLE PERMITS.
 2. INSTALL PERIMETER EROSION CONTROL, INLET PROTECTION, AND TRACKING PADS WHERE REQUIRED.
 3. SITE DEMOLITION AND REMOVALS.
 4. GRADING OF HOUSE LOTS.
 5. CONSTRUCT SIDEWALK, PLACE ASPHALT.
 6. FINAL GRADE, TOPSOIL, INSTALL PLANT MATERIAL, SEED AND STABILIZE ALL DISTURBED AREAS.
 7. AFTER SITE IS STABILIZED, REMOVE ALL TEMPORARY MEASURES AND VEGETATE THE DISTURBED AREAS.
 8. ESTIMATED TIME TO FINAL STABILIZATION - 12 MONTHS FROM THE START OF CONSTRUCTION ACTIVITIES.

- NOTES:
1. SANITARY AND WATER LATERALS WERE INSTALLED AT TIME OF W. VLIET RECONSTRUCTION (SPRING 2023).
 2. ALL SURFACES THAT MAY BE DISTURBED IN ANY STREET ROW OPENINGS SHALL BE REPLACED IN SUBSTANTIALLY THE SAME CONDITION AS THEY WERE PRIOR TO SUCH DISTURBANCE.

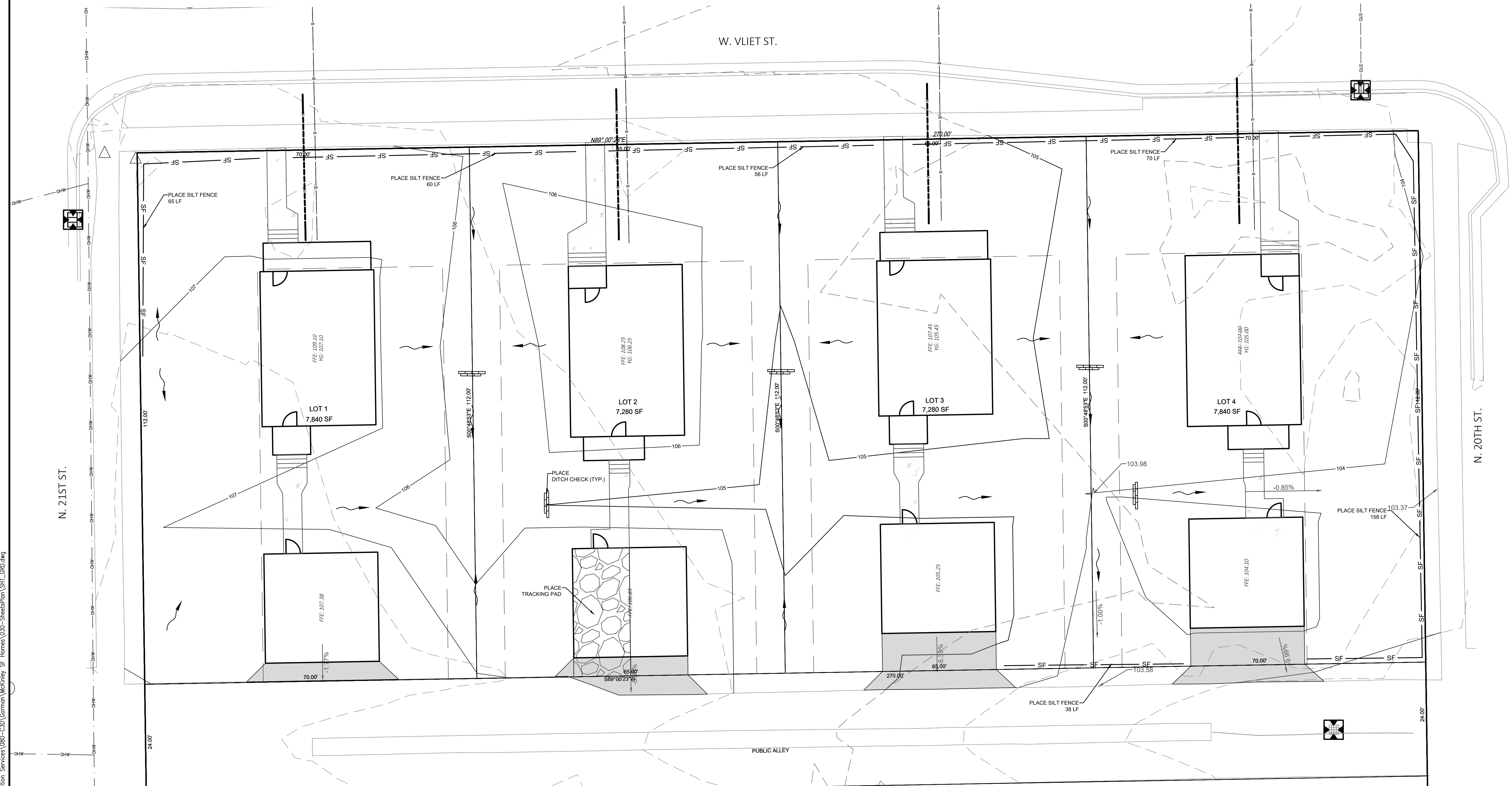


THE INFORMATION SHOWN ON THIS DRAWING CONCERNING TYPE AND LOCATION OF UNDERGROUND UTILITIES IS NOT GUARANTEED TO BE ACCURATE OR COMPLETE. THE CONTRACTOR IS RESPONSIBLE FOR VERIFYING THE OWN PERFORMANCE AS TO THE TYPE AND LOCATION OF UNDERGROUND UTILITIES AS MAY BE NECESSARY TO AVOID DAMAGE TO THEM. IF ADDITIONAL UTILITIES ARE FOUND ON THE PROPERTY, THE OWNER SHALL PROVIDE EXISTING PLANS OF OTHER UTILITIES SERVING THE SITE AND THE BELIEF THAT OTHERS CANNOT BE LOCATED BY A VISUAL OBSERVATION OF THE PROPERTY OR OF WHICH THE SURVEYOR WOULD HAVE NO KNOWLEDGE.

DIGGERS HOTLINE
 Toll Free (800) 242-8511
 Milwaukee Area (414) 259-1181
 Hearing Impaired TDD (800) 542-2289
 www.DiggersHotline.com



ISSUED FOR PERMITTING



PROPOSED SITE PLAN WITH 2-CAR GARAGES

McKINLEY SINGLE FAMILY HOMES
 2001, 2007, 2015 & 2025 WEST VLIET STREET
 CITY OF MILWAUKEE, WI 53205

Revisions:
 Sheet Name: MASTER GRADING AND EROSION CONTROL PLAN
 Date: 05/15/2024
 Drawn By: GME
 Project No.: 490809
 Sheet No.