

LIBERTY

PROPERTY TRUST

PARK PLACE
DETAILED PLANNED DEVELOPMENT (DPD)
STAGE XXII

EXHIBIT "A"

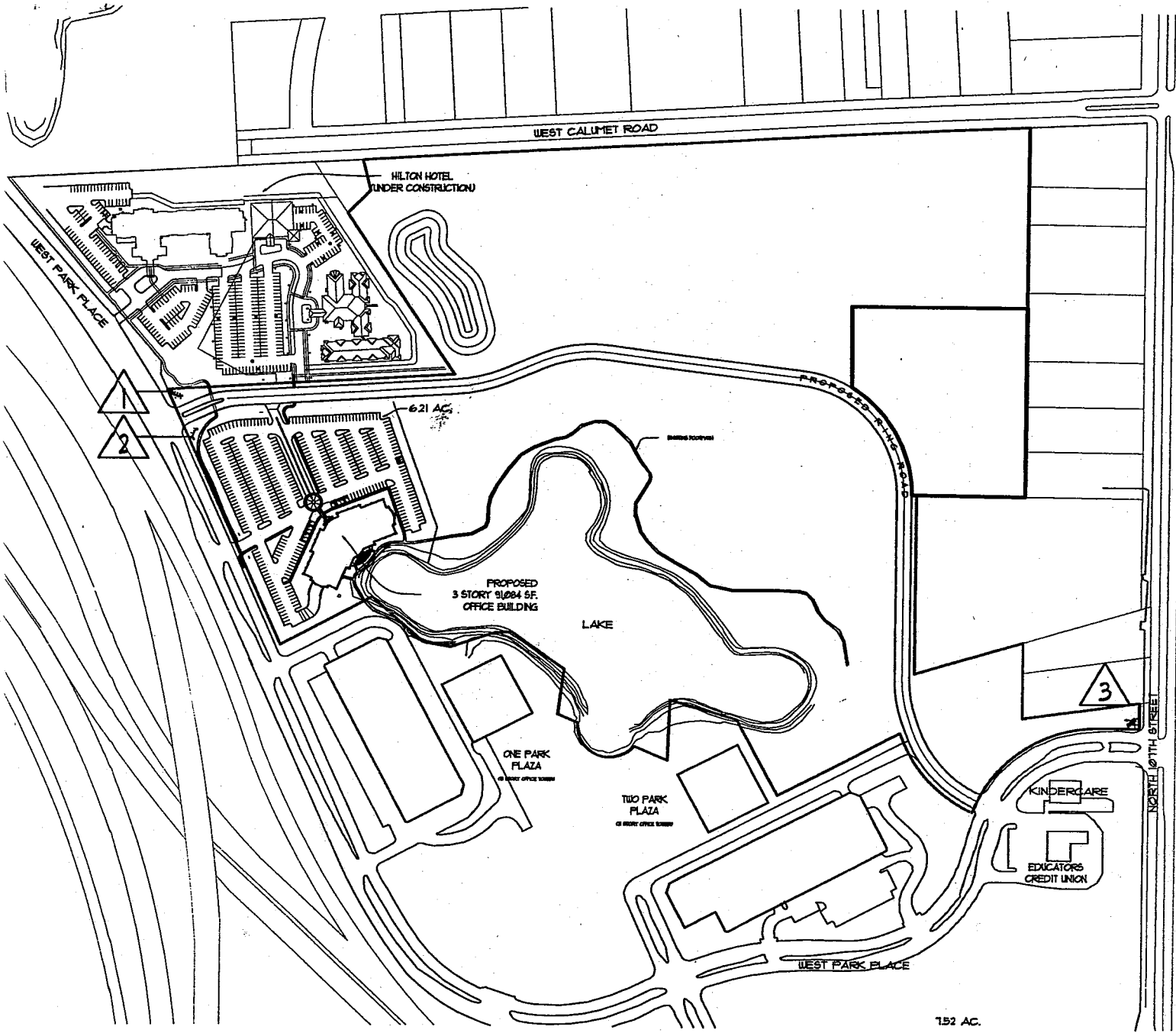
SIGNAGE

The STAGE XXII Detail Plan shall consist of the attached Project Signage plans. The proposed signage matches that proposed within the Stage XVII amendment. The signs have been designed to match the predominant signage standard used by Trammell Crow Company throughout the original development. This standard incorporated a masonry monument sign with a brick soldier base course(s) and double row-loc surround with a black painted metal background panel with brushed stainless or aluminum channel copy and reveal frame.

The Project signage allows Liberty Property Trust, the major Park Place landlord, to establish its own identity within Park Place. Liberty, through an Out-of-Program Agreement with the City of Milwaukee is currently extending a ring road around the existing man-made lake to serve the 75 acres of vacant purchased from Trammell Crow/Citicorp. The road will be known as Liberty Parkway and intersects W. Park Place immediately west of N. 107th Street and at the west between the recently completed Hilton Hotel and the three-story Liberty I at Park Place projects. The project signage consists of a curved masonry monument wall which utilizes the same materials used on the predominant existing monument signs. The curved single face sign provides the Liberty at Park Place and Liberty Property Trust identification with brushed stainless or aluminum channel copy and reveal frame over a black painted metal background panel. This sign is visible from N. 107th Street and W. Park Place. The use of masonry piers, a limestone base and cap with granite accent medallions add further quality to the signage. Three flagpoles and ground mounted floodlighting and extensive landscaping will add to the Liberty at Park Place entrance statement.

ZND/ce
EXHIBIT A

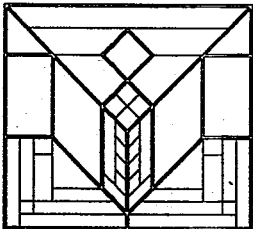
File No. *001032*



KEY NOTES:

- 1 NOTE PARK IDENTIFICATION SIGN LOCATION (SHT. 2,5,6 OF 10)
- 2 NOTE MONUMENT LOCATION (SHT. 3,7,8 OF 10)
- 3 NOTE PARK IDENTIFICATION SIGN LOCATION (SHT. 4,9,10 OF 10)

1
A0.1
PARK PLACE MASTER SITE PLAN
 SCALE: 1" = 400'-0"



LIBERTY AT PARK PLACE
 MILWAUKEE, WISCONSIN

MASTER SITE PLAN

STEPHEN PERRY SMITH ARCHITECTS
 14135 N. CEDARBURG RD., MEQUON, WI 53097

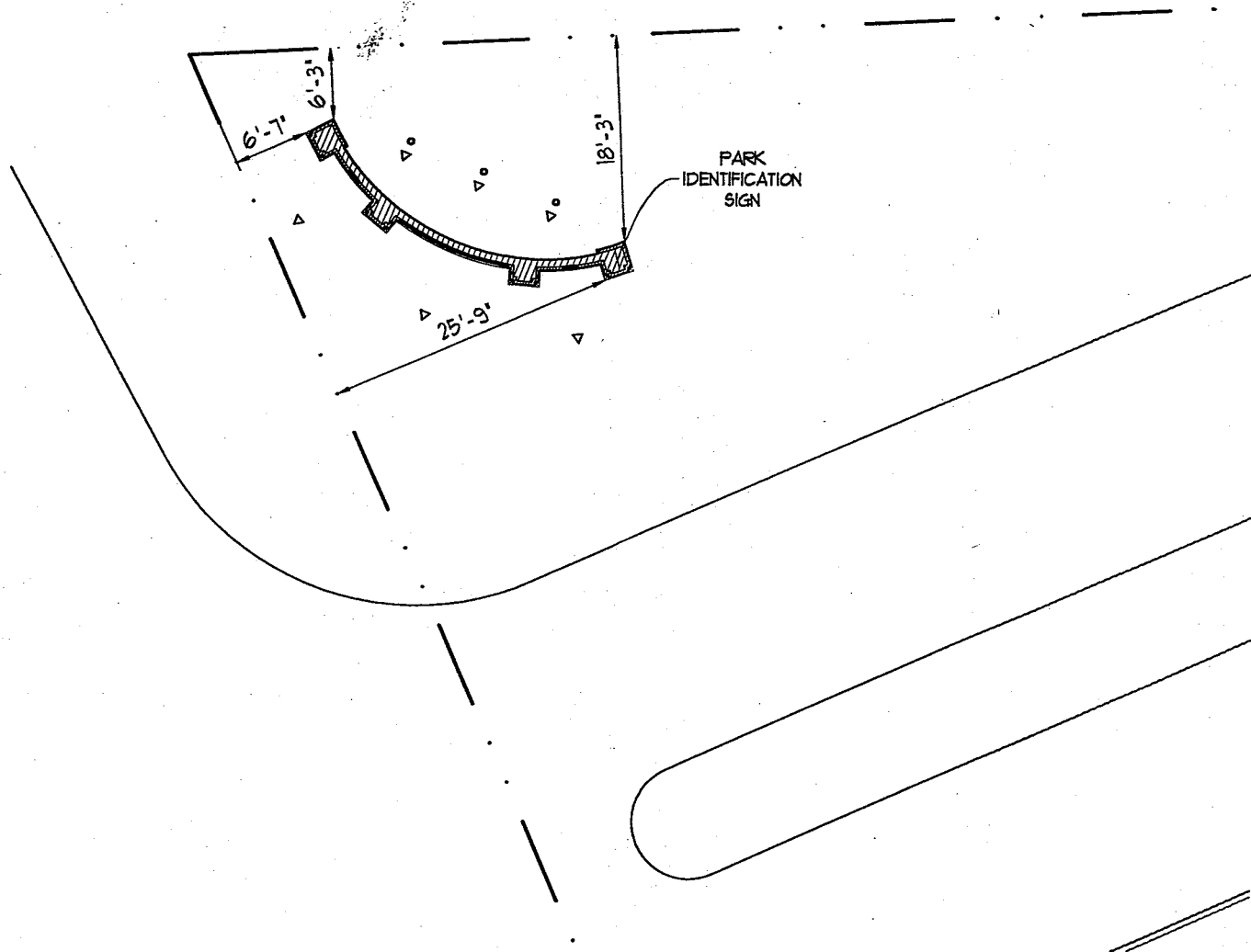
INFORMATION

PROJECT ARCHITECT	SPS
DRAWN BY	RRS
PROJECT NUMBER	LPT-00-525
ISSUED FOR	CONSTRUCTION
SHEET	A0.1
DATE	9/15/00

CONSTRUCTION BULLETIN

—
SHEET:

1 OF 10

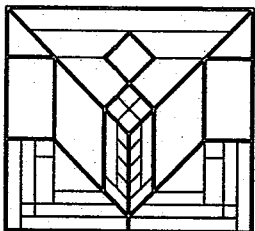


1
A02

PARTIAL MASTER SITE PLAN

PARK IDENTIFICATION SIGN AT WEST ENTRANCE

SCALE: 1/16" = 1'-0"



LIBERTY I AT PARK PLACE
MILWAUKEE, WISCONSIN
**PARK IDENTIFICATION SIGN
LOCATION**

STEPHEN PERRY SMITH ARCHITECTS
14135 N. CEDARBURG RD., MEQUON, WI 53097

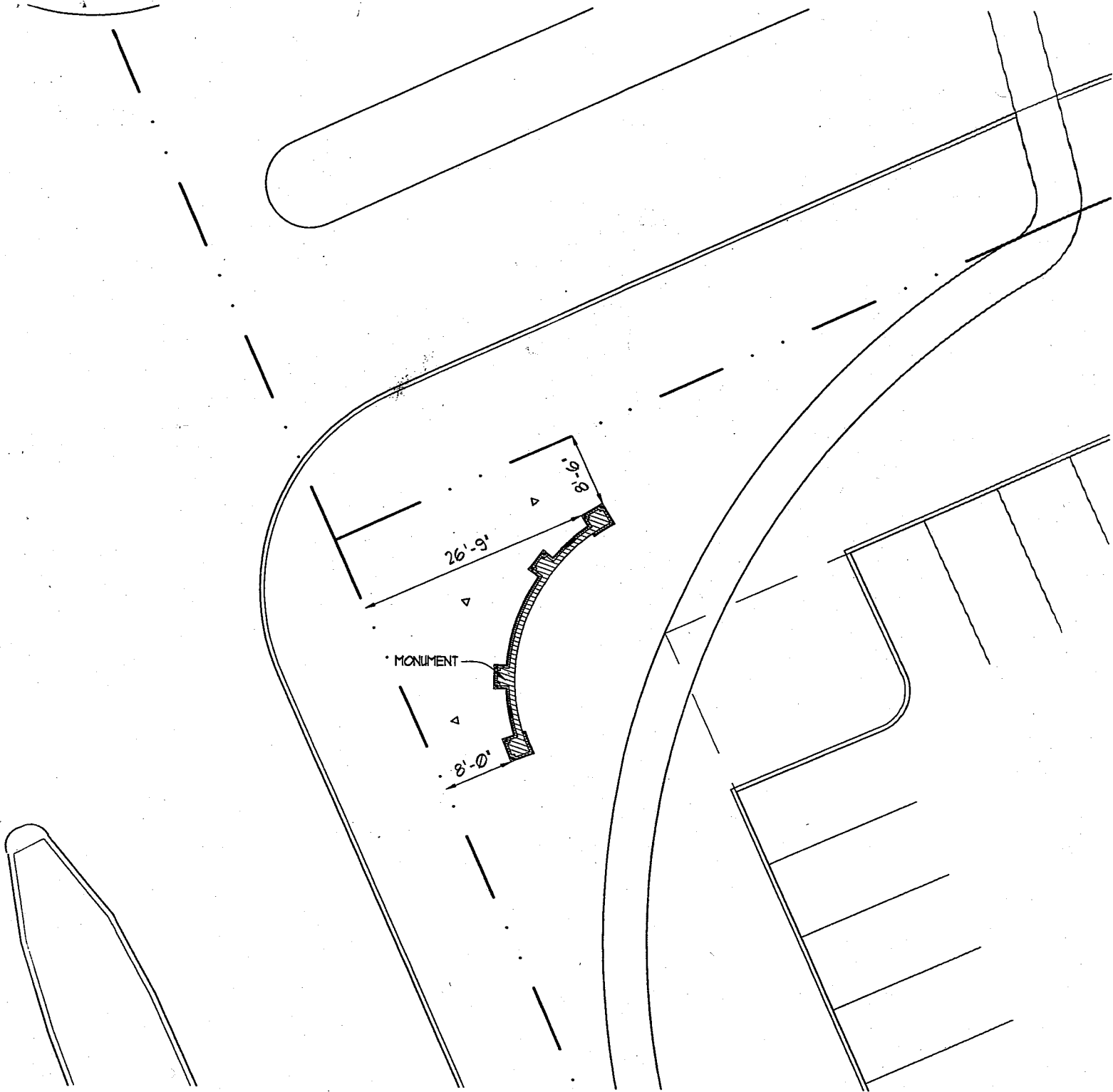
INFORMATION

PROJECT ARCHITECT	SPS
DRAWN BY	RRS
PROJECT NUMBER	LPT-00-525
ISSUED FOR	CONSTRUCTION
SHEET	A01
DATE	9/15/00

CONSTRUCTION BULLETIN:

SHEET:

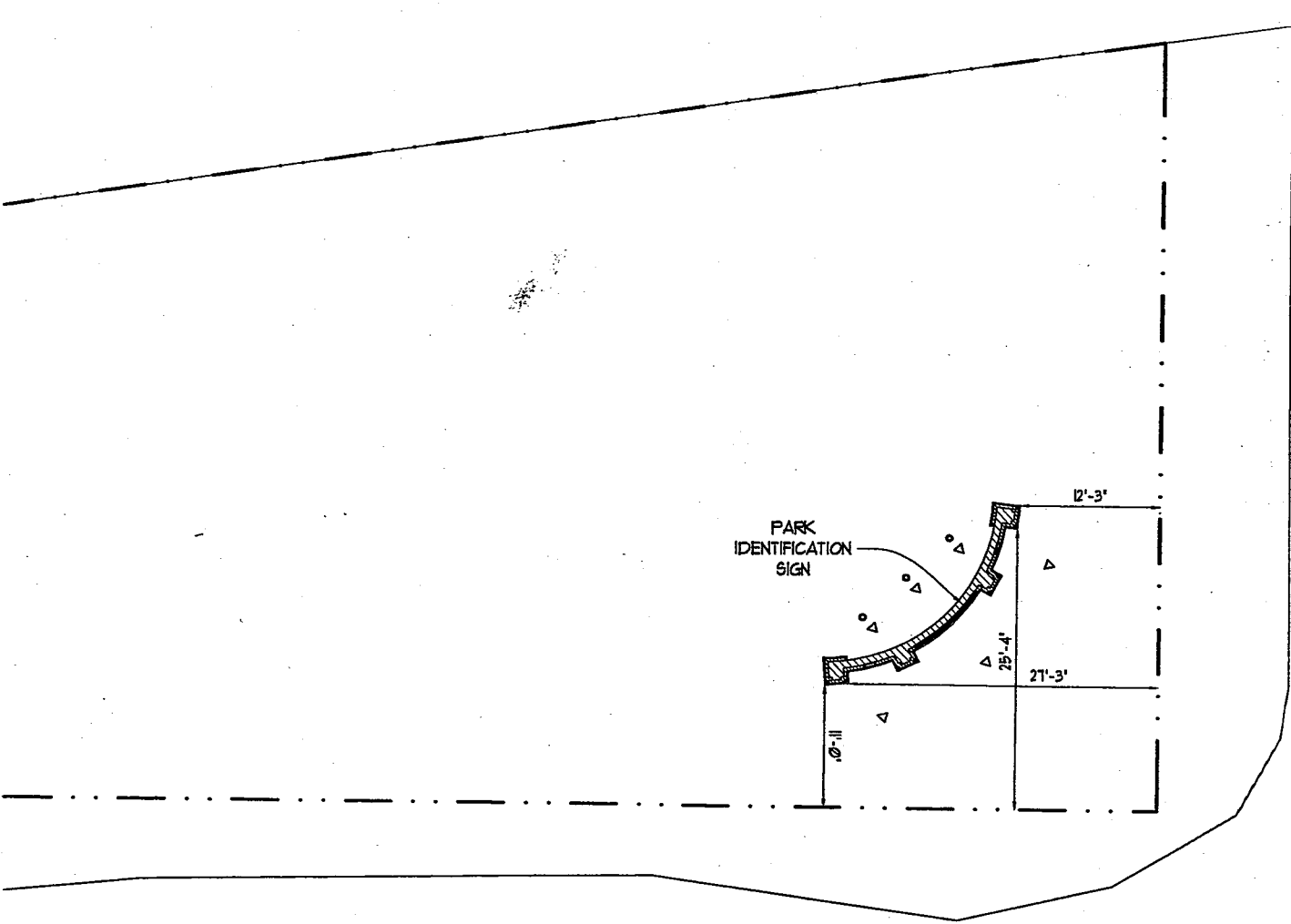
2 OF 10



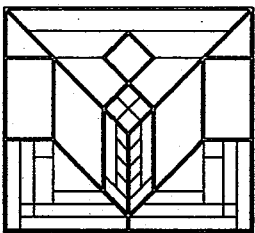
1 PARTIAL MASTER SITE PLAN
 A0.2 MONUMENT LOCATION

SCALE: 1/16" = 1'-0"

	<p>LIBERTY AT PARK PLACE MILWAUKEE, WISCONSIN</p> <p>MONUMENT LOCATION</p> <hr/> <p>STEPHEN PERRY SMITH ARCHITECTS 14135 N. CEDARBURG RD., MEQUON, WI 53097</p>	INFORMATION		CONSTRUCTION BULLETIN
		PROJECT ARCHITECT	SPS	- SHEET: 3 OF 10
		DRAWN BY	RRS	
		PROJECT NUMBER	LPT-00-525	
		ISSUED FOR	CONSTRUCTION	
SHEET	A01			
DATE	9/15/00			



1 PARTIAL MASTER SITE PLAN
 A01 PARK IDENTIFICATION SIGN AT EAST ENTRANCE SCALE: 1/16" = 1'-0"

	LIBERTY AT PARK PLACE MILWAUKEE, WISCONSIN PARK IDENTIFICATION SIGN LOCATION	INFORMATION		CONSTRUCTION BULLETIN
	<hr/> STEPHEN PERRY SMITH ARCHITECTS 14135 N. CEDARBURG RD., MEQUON, WI 53097	PROJECT ARCHITECT	SPS	-
		DRAWN BY	RRS	
		PROJECT NUMBER	LPT-00-525	SHEET:
		ISSUED FOR	CONSTRUCTION	4 OF 10
	SHEET	A01		
	DATE	9/15/00		