



Certificate of Appropriateness

Milwaukee Historic Preservation Commission/200 E. Wells Street/Milwaukee, WI 53202/phone 414-286-5712/fax 414-286-3004

Property 4485 N. 26TH ST. Garden Homes Historic District
Description of work This city-owned house in the Garden Homes Historic District will have a series of general exterior repairs including a new roof (red 3-tab) gutters and downspouts, repairs to the chimney, stucco siding, trim, eaves, as well as a rebuilt entry porch.
Date issued 10/25/2016 PTS ID 114123 COA General exterior repairs

In accordance with the provisions of Section 320-21 (11) and (12) of the Milwaukee Code of Ordinances, the Milwaukee Historic Preservation Commission has issued a certificate of appropriateness for the work listed above. The work was found to be consistent with preservation guidelines. The following conditions apply to this certificate of appropriateness:

All work will follow the specifications in the application.

All work must be done in a craftsman-like manner, and must be completed within one year of the date this certificate was issued. Staff must approve any changes or additions to this certificate before work begins. Work that is not completed in accordance with this certificate may be subject to correction orders or citations. If you require technical assistance, please contact Carlen Hatala of the Historic Preservation staff as follows: Phone: (414) 286-5722 Fax: (414) 286-3004 E-mail: carlen.hatala@milwaukee.gov.

If permits are required, you are responsible for obtaining them from the Milwaukee Development Center. If you have questions about permit requirements, please consult the Development Center's web site, www.milwaukee.gov/build, or call (414) 286-8210.

City of Milwaukee Historic Preservation Staff

Copies to: Development Center, Ald. Ashanti Hamilton, Contractor , Inspector Bob McInnes (286-2518)

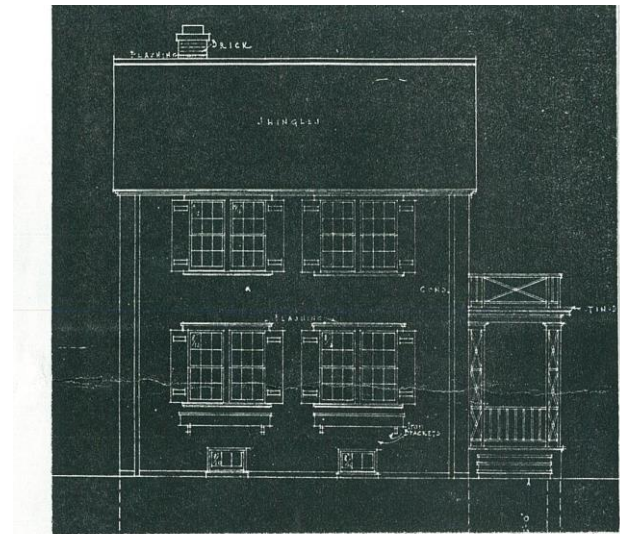


Before rehabilitation





After exterior rehabilitation.



GARDEN HOMES HISTORIC DISTRICT
MILWAUKEE, WI BUILT 1921-23
WILLIAM SCHUCHARDT, ARCH.

MODEL 6G

Original plan for this house



After exterior rehabilitation.