

(120' R.O.W.)

SEC. LINE

N.E. 1/4 SEC. 15, T.6N., R.21E.

529

60

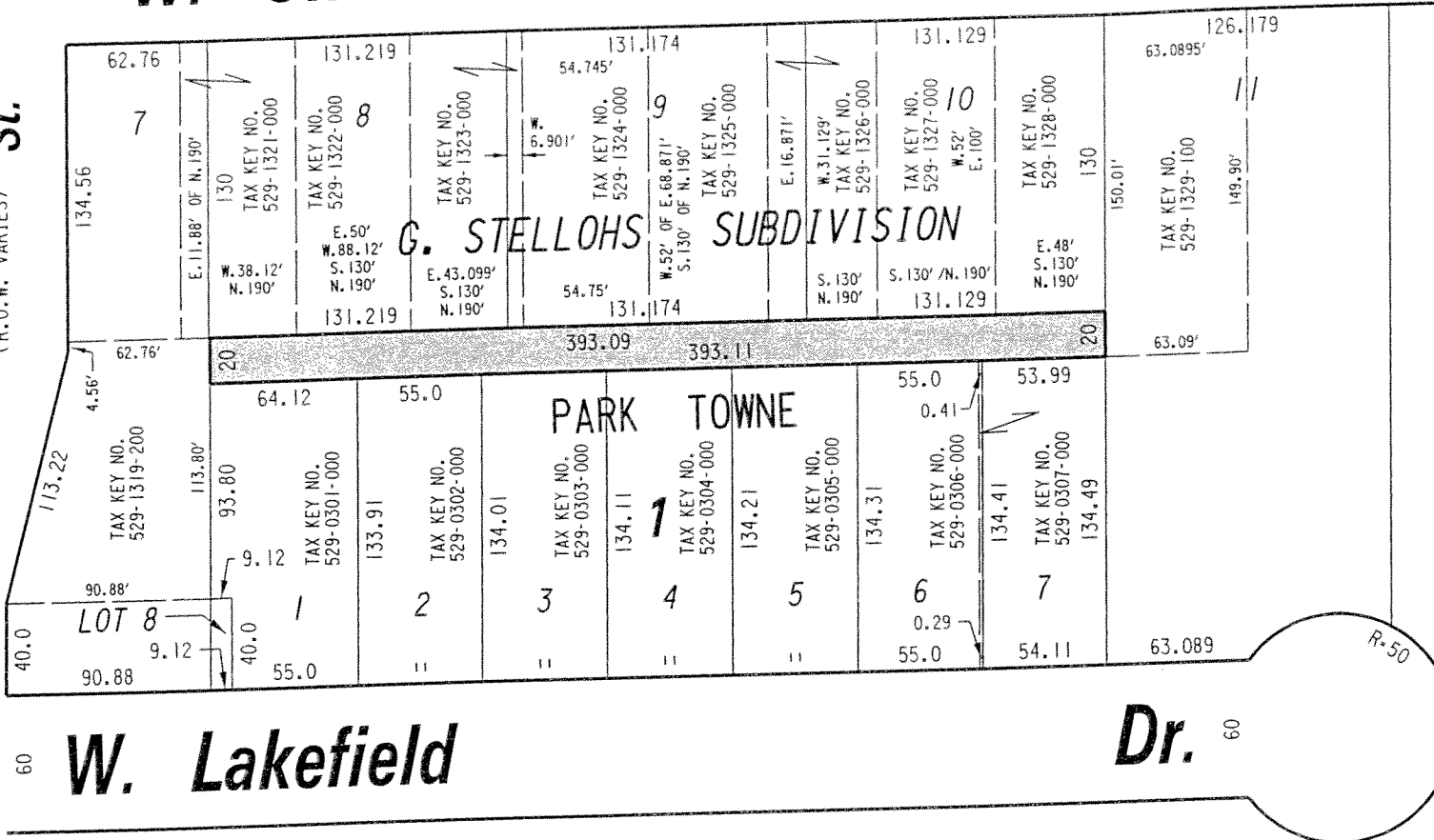
W. Oklahoma Ave.

Ave. 60

St.

(R.O.W. VARIES)

S. 66th




 PUBLIC ALLEY PROPOSED TO BE VACATED

EXHIBIT "A"  
 FILE NO. 091170  
 INFRASTRUCTURE SERVICES DIVISION  
 MILWAUKEE, WISCONSIN

ASSIGNED TO: W.E. FUCHS  
 DRAWN BY: W.E.F.  
 PROJECT/GRANT NO.: WK52337291  
 APPROVED BY:

CH'K'D. BY: W.E. FUCHS  
 DATE: JAN. 26, 2010  
 SCALE: 1" = 80'

*Marcia Cornell*  
 CENTRAL DRAFTING & RECORDS MANAGER

*[Signature]*  
 CITY ENGINEER