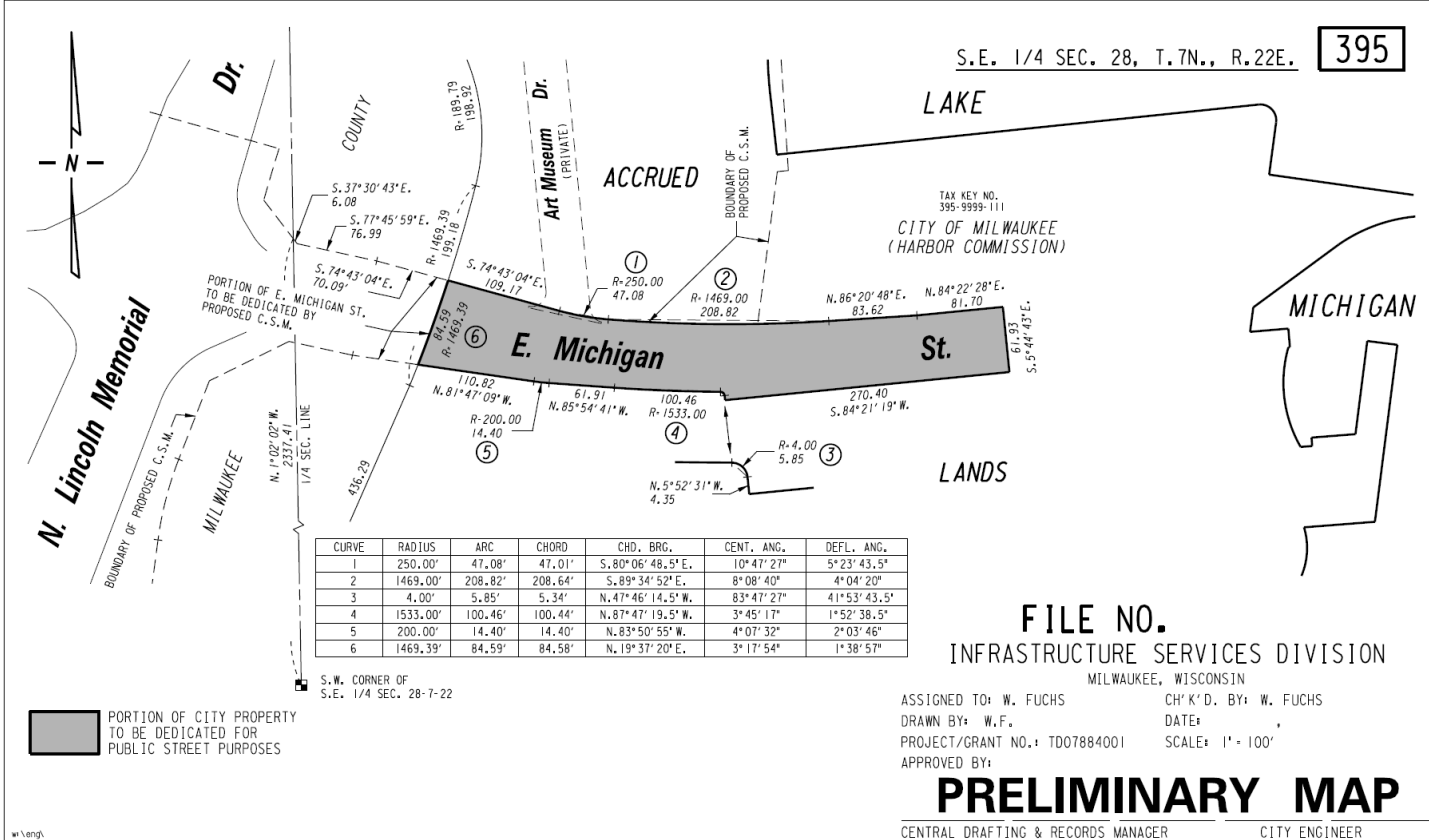


Exhibit B: Dedication Property

S.E. 1/4 SEC. 28, T.7N., R.22E. 395



CURVE	RADIUS	ARC	CHORD	CHD. BRG.	CENT. ANG.	DEFL. ANG.
1	250.00'	47.08'	47.01'	S. 80° 06' 48.5" E.	10° 47' 27"	5° 23' 43.5"
2	1469.00'	208.82'	208.64'	S. 89° 34' 52" E.	8° 08' 40"	4° 04' 20"
3	4.00'	5.85'	5.34'	N. 47° 46' 14.5" W.	83° 47' 27"	41° 53' 43.5"
4	1533.00'	100.46'	100.44'	N. 87° 47' 19.5" W.	3° 45' 17"	1° 52' 38.5"
5	200.00'	14.40'	14.40'	N. 83° 50' 55" W.	4° 07' 32"	2° 03' 46"
6	1469.39'	84.59'	84.58'	N. 19° 37' 20" E.	3° 17' 54"	1° 38' 57"

PORTION OF CITY PROPERTY TO BE DEDICATED FOR PUBLIC STREET PURPOSES

FILE NO.
 INFRASTRUCTURE SERVICES DIVISION
 MILWAUKEE, WISCONSIN

ASSIGNED TO: W. FUCHS
 DRAWN BY: W.F.
 PROJECT/GRANT NO.: TD07884001
 APPROVED BY:

CH'K'D. BY: W. FUCHS
 DATE:
 SCALE: 1" = 100'

PRELIMINARY MAP

CENTRAL DRAFTING & RECORDS MANAGER CITY ENGINEER