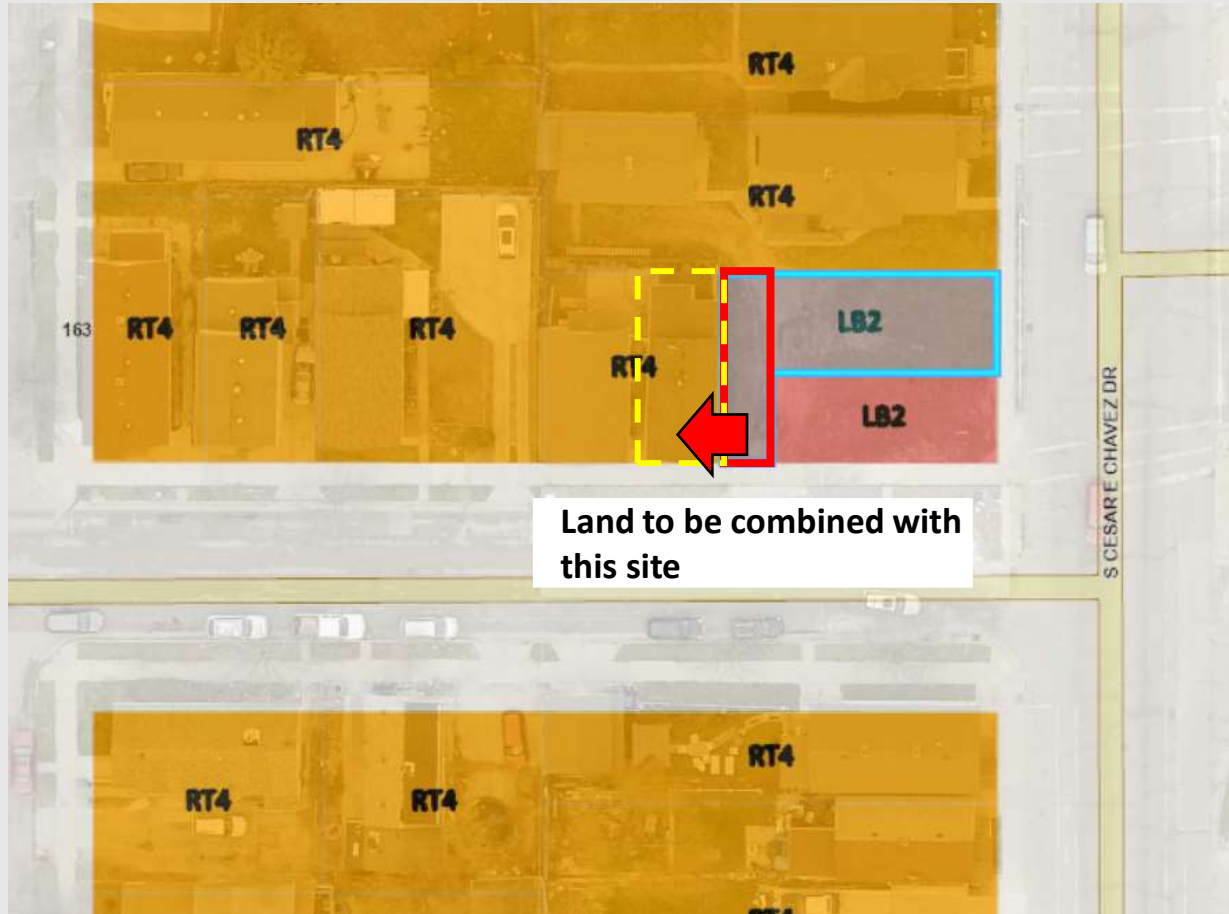


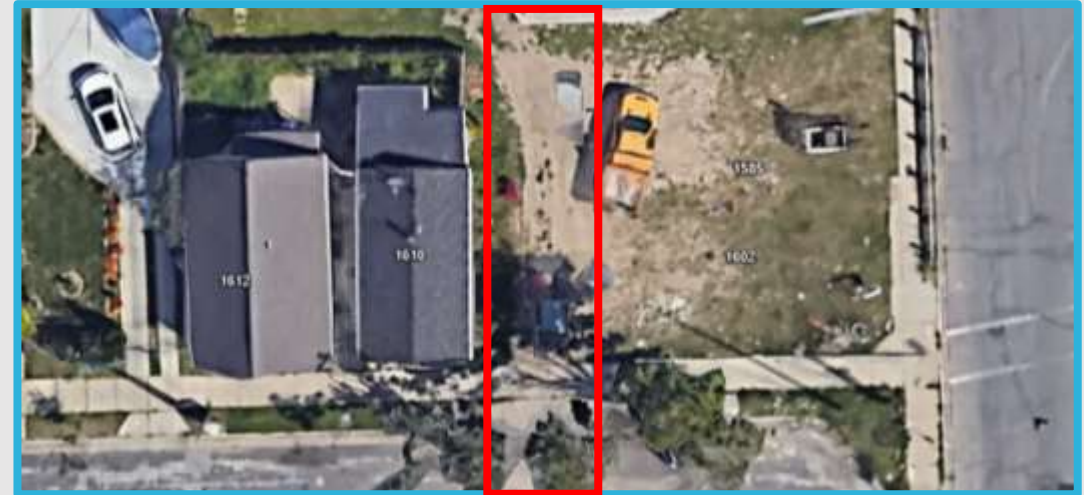
File No. 240250. A substitute ordinance relating to the change in zoning from Local Business, LB2, to Two-Family Residential, RT4, on the western portion of 1585 South Cesar E. Chavez Drive, located on the north side of West Lapham Street, west of South Cesar E. Chavez Drive, in the 12th Aldermanic District.



File No. 240250. Context

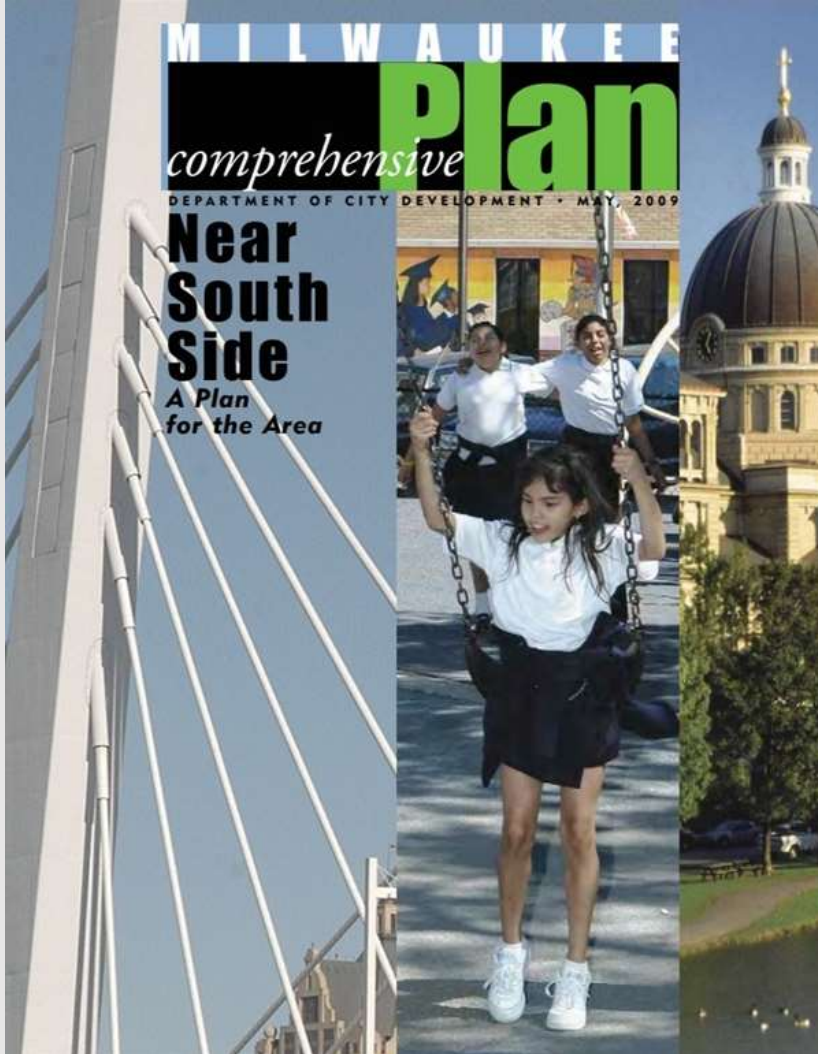


Corner Structure has been razed



Aerial View

File No. 240250. Consistency with Comprehensive Plan.



Near South Side Plan

- Adopted in 2009. Amended in 2015 and 2016.
- Land use policies in the Plan are intended to reinforce the traditional neighborhood use and development patterns that are characteristic of the area neighborhoods
- The proposal is **consistent** with the Near South Side Comprehensive Plan.